

MR 816^{csx}

MR 816^x

ADVANCED INTEGRATION DSP STUDIO



FCC INFORMATION (U.S.A.)

1. IMPORTANT NOTICE: DO NOT MODIFY THIS UNIT!

This product, when installed as indicated in the instructions contained in this manual, meets FCC requirements. Modifications not expressly approved by Yamaha may void your authority, granted by the FCC, to use the product.

2. IMPORTANT: When connecting this product to accessories and/or another product use only high quality shielded cables. Cable/s supplied with this product MUST be used. Follow all installation instructions. Failure to follow instructions could void your FCC authorization to use this product in the USA.

3. NOTE: This product has been tested and found to comply with the requirements listed in FCC Regulations, Part 15 for Class "B" digital devices. Compliance with these requirements provides a reasonable level of assurance that your use of this product in a residential environment will not result in harmful interference with other electronic devices. This equipment generates/uses radio frequencies and, if not installed and used according to the instructions found in the users manual, may cause interference harmful to the operation of other electronic devices. Compliance with FCC regulations does not guarantee

that interference will not occur in all installations. If this product is found to be the source of interference, which can be determined by turning the unit "OFF" and "ON", please try to eliminate the problem by using one of the following measures:

Relocate either this product or the device that is being affected by the interference.

Utilize power outlets that are on different branch (circuit breaker or fuse) circuits or install AC line filter/s.

In the case of radio or TV interference, relocate/reorient the antenna. If the antenna lead-in is 300 ohm ribbon lead, change the lead-in to co-axial type cable.

If these corrective measures do not produce satisfactory results, please contact the local retailer authorized to distribute this type of product. If you can not locate the appropriate retailer, please contact Yamaha Corporation of America, Electronic Service Division, 6600 Orangethorpe Ave, Buena Park, CA90620

The above statements apply ONLY to those products distributed by Yamaha Corporation of America or its subsidiaries.

* This applies only to products distributed by YAMAHA CORPORATION OF AMERICA.

(class B)

COMPLIANCE INFORMATION STATEMENT (DECLARATION OF CONFORMITY PROCEDURE)

Responsible Party : Yamaha Corporation of America
Address : 6600 Orangethorpe Ave., Buena Park, Calif.
90620
Telephone : 714-522-9011
Type of Equipment : ADVANCED INTEGRATION DSP STUDIO
Model Name : MR816CSX/MR816X

This device complies with Part 15 of the FCC Rules.

Operation is subject to the following two conditions:

- 1) this device may not cause harmful interference, and
- 2) this device must accept any interference received including interference that may cause undesired operation.

See user manual instructions if interference to radio reception is suspected.

* This applies only to products distributed by
YAMAHA CORPORATION OF AMERICA.

(FCC DoC)

OBSERVERA!

Apparaten kopplas inte ur växelströmskällan (nätet) så länge som den är ansluten till vägguttaget, även om själva apparaten har stängts av.

ADVARSEL: Netspændingen til dette apparat er IKKE afbrudt, så længe netledningen sidder i en stikkontakt, som er tændt — også selvom der er slukket på apparatets afbryder.

VAROITUS: Laitteen toisiopiiriin kytketty käyttökyltkin ei irroita koko laitetta verkosta.

(standby)

IMPORTANT NOTICE FOR THE UNITED KINGDOM Connecting the Plug and Cord

IMPORTANT. The wires in this mains lead are coloured in accordance with the following code:

BLUE : NEUTRAL
BROWN : LIVE

As the colours of the wires in the mains lead of this apparatus may not correspond with the coloured markings identifying the terminals in your plug proceed as follows:

The wire which is coloured BLUE must be connected to the terminal which is marked with the letter N or coloured BLACK.

The wire which is coloured BROWN must be connected to the terminal which is marked with the letter L or coloured RED.

Making sure that neither core is connected to the earth terminal of the three pin plug.

* This applies only to users in the United Kingdom.

(2 wires)

SPECIAL MESSAGE SECTION

This product utilizes batteries or an external power supply (adapter). DO NOT connect this product to any power supply or adapter other than one described in the manual, on the name plate, or specifically recommended by Steinberg/Yamaha.

WARNING: Do not place this product in a position where anyone could walk on, trip over, or roll anything over power or connecting cords of any kind. The use of an extension cord is not recommended! If you must use an extension cord, the minimum wire size for a 25' cord (or less) is 18 AWG. NOTE: The smaller the AWG number, the larger the current handling capacity. For longer extension cords, consult a local electrician.

This product should be used only with the components supplied or; a cart, rack, or stand that is recommended by Steinberg/Yamaha. If a cart, etc., is used, please observe all safety markings and instructions that accompany the accessory product.

SPECIFICATIONS SUBJECT TO CHANGE:

The information contained in this manual is believed to be correct at the time of printing. However, Steinberg/Yamaha reserves the right to change or modify any of the specifications without notice or obligation to update existing units.

This product, either alone or in combination with an amplifier and headphones or speaker/s, may be capable of producing sound levels that could cause permanent hearing loss. DO NOT operate for long periods of time at a high volume level or at a level that is uncomfortable. If you experience any hearing loss or ringing in the ears, you should consult an audiologist.

IMPORTANT: The louder the sound, the shorter the time period before damage occurs.

Some Steinberg/Yamaha products may have benches and / or accessory mounting fixtures that are either supplied with the product or as optional accessories. Some of these items are designed to be dealer assembled or installed. Please make sure that benches are stable and any optional fixtures (where applicable) are well secured BEFORE using.

Benches supplied by Steinberg/Yamaha are designed for seating only. No other uses are recommended.

NOTICE:

Service charges incurred due to a lack of knowledge relating to how a function or effect works (when the unit is operating as designed) are not covered by the manufacturer's warranty, and are therefore the owners responsibility. Please study this manual carefully and consult your dealer before requesting service.

ENVIRONMENTAL ISSUES:

Steinberg/Yamaha strives to produce products that are both user safe and environmentally friendly. We sincerely believe that our products and the production methods used to produce them, meet these goals. In keeping with both the letter and the spirit of the law, we want you to be aware of the following:

Battery Notice:

This product MAY contain a small non-rechargeable battery which (if applicable) is soldered in place. The average life span of this type of battery is approximately five years. When replacement becomes necessary, contact a qualified service representative to perform the replacement.

This product may also use "household" type batteries. Some of these may be rechargeable. Make sure that the battery being charged is a rechargeable type and that the charger is intended for the battery being charged.

When installing batteries, do not mix batteries with new, or with batteries of a different type. Batteries MUST be installed correctly. Mismatches or incorrect installation may result in overheating and battery case rupture.

Warning:

Do not attempt to disassemble, or incinerate any battery. Keep all batteries away from children. Dispose of used batteries promptly and as regulated by the laws in your area. Note: Check with any retailer of household type batteries in your area for battery disposal information.

Disposal Notice:

Should this product become damaged beyond repair, or for some reason its useful life is considered to be at an end, please observe all local, state, and federal regulations that relate to the disposal of products that contain lead, batteries, plastics, etc. If your dealer is unable to assist you, please contact Steinberg/Yamaha directly.

NAME PLATE LOCATION:

The name plate is located on the top panel of the product. The name plate lists the product's model number, power requirements, and other information. The serial number is located on the rear panel. Please record the model number, serial number, and date of purchase in the spaces provided below, and keep this manual as a permanent record of your purchase.

Model

Serial No.

Purchase Date

PLEASE KEEP THIS MANUAL

Table of Contents

Introduction.....	6	Connecting to an External Device	20
Main Features.....	6	Try Recording	22
Package Contents	7	Troubleshooting	24
About the Disks included in the Package	7	License Agreement for TOOLS for MR.....	26
The Controls and Connectors.....	10	License Agreement for Cubase AI 4.....	27
Turning the Power On and Off.....	11	Appendix.....	30
Software Installation	12		

PRECAUTIONS

PLEASE READ CAREFULLY BEFORE PROCEEDING

* Please keep this manual in a safe place for future reference.

WARNING

Always follow the basic precautions listed below to avoid the possibility of serious injury or even death from electrical shock, short-circuiting, damages, fire or other hazards. These precautions include, but are not limited to, the following:

Power supply/AC power adaptor

- Only use the voltage specified as correct for the instrument. The required voltage is printed on the name plate of the instrument.
- Use the specified adaptor (PA-30 or an equivalent recommended by Yamaha) only. Using the wrong adaptor can result in damage to the instrument or overheating.
- Check the electric plug periodically and remove any dirt or dust which may have accumulated on it.
- Do not place the AC adaptor cord near heat sources such as heaters or radiators, and do not excessively bend or otherwise damage the cord, place heavy objects on it, or place it in a position where anyone could walk on, trip over, or roll anything over it.

Do not open

- Do not open the instrument or attempt to disassemble the internal parts or modify them in any way. The instrument contains no user-serviceable parts. If it should appear to be malfunctioning, discontinue use immediately and have it inspected by qualified Steinberg/Yamaha service personnel.

Water warning

- Do not expose the instrument to rain, use it near water or in damp or wet conditions, or place containers on it containing liquids which might spill into any openings. If any liquid such as water seeps into the instrument, turn off the power immediately and unplug the power cord from the AC outlet. Then have the instrument inspected by qualified Steinberg/Yamaha service personnel.
- Never insert or remove an electric plug with wet hands.

Fire warning

- Do not put burning items, such as candles, on the unit.
A burning item may fall over and cause a fire.

If you notice any abnormality

- If the AC adaptor cord or plug becomes frayed or damaged, or if there is a sudden loss of sound during use of the instrument, or if any unusual smells or smoke should appear to be caused by it, immediately turn off the power switch, disconnect the adaptor plug from the outlet, and have the instrument inspected by qualified Steinberg/Yamaha service personnel.

CAUTION

Always follow the basic precautions listed below to avoid the possibility of physical injury to you or others, or damage to the instrument or other property. These precautions include, but are not limited to, the following:

Power supply/AC power adaptor

- When removing the electric plug from the instrument or an outlet, always hold the plug itself and not the cord.
- Unplug the AC power adaptor when not using the instrument, or during electrical storms.

- Do not connect the instrument to an electrical outlet using a multiple-connector. Doing so can result in lower sound quality, or possibly cause overheating in the outlet.

Location

- Do not expose the instrument to excessive dust or vibrations, or extreme cold or heat (such as in direct sunlight, near a heater, or in a car during the day) to prevent the possibility of panel disfiguration or damage to the internal components.
- Do not use the instrument in the vicinity of a TV, radio, stereo equipment, mobile phone, or other electric devices. Otherwise, the instrument, TV, or radio may generate noise.
- Do not place the instrument in an unstable position where it might accidentally fall over.
- Before moving the instrument, remove all connected adaptor and other cables.
- When setting up the product, make sure that the AC outlet you are using is easily accessible. If some trouble or malfunction occurs, immediately turn off the power switch and disconnect the plug from the outlet. Even when the power switch is turned off, electricity is still flowing to the product at the minimum level. When you are not using the product for a long time, make sure to unplug the power cord from the wall AC outlet.
- Use only the rack specified for the instrument. When attaching the stand or rack, use the provided screws only. Failure to do so could cause damage to the internal components or result in the instrument falling over.
- Do not place objects in front of the instrument's air vent, since this may prevent adequate ventilation of the internal components, and possibly result in the instrument overheating.

Connections

- Before connecting the instrument to other electronic components, turn off the power for all components. Before turning the power on or off for all components, set all volume levels to minimum. Also, be sure to set the volumes of all components at their minimum levels and gradually raise the volume controls while playing the instrument to set the desired listening level.

Maintenance

- When cleaning the instrument, use a soft, dry cloth. Do not use paint thinners, solvents, cleaning fluids, or chemical-impregnated wiping cloths.

Handling caution

- Take care that the key cover does not pinch your fingers, and do not insert a finger or hand in any gaps on the instrument.
- Never insert or drop paper, metallic, or other objects into the gaps on the panel. If this happens, turn off the power immediately and unplug the power cord from the AC outlet. Then have the instrument inspected by qualified Steinberg/Yamaha service personnel.
- Do not place vinyl, plastic or rubber objects on the instrument, since this might discolor the panel.
- Do not rest your weight on, or place heavy objects on the instrument, and do not use excessive force on the buttons, switches or connectors.
- Do not use the instrument/device or headphones for a long period of time at a high or uncomfortable volume level, since this can cause permanent hearing loss. If you experience any hearing loss or ringing in the ears, consult a physician.

Saving data

Saving and backing up your data

- Storing the settings to internal memory of the MR816 CSX/MR816 X must be performed from the MR Editor on the computer. If you use the MR816 CSX/MR816 X with MR Editor, you can store the settings to internal memory by storing the settings as a Scene or recalling the Scene on the MR Editor. Also, you can save 20 Scenes as an Editor file to the computer. If you use the MR816 CSX/MR816 X with Cubase, you cannot store the settings to internal memory of the MR816 CSX/MR816 X. Save the settings as a project file to the computer. You should also save your Project files or Editor files onto external media as backup to avoid the loss of important data due to equipment malfunction or improper operation.
- If you want to store the settings edited on the MR816 CSX/MR816 X without a computer, launch the MR Editor with the computer and MR connected, then perform the Scene Store operation. This operation will store the settings to the internal memory of the MR816 CSX/MR816 X and the MR Editor as a Scene.

Steinberg/Yamaha cannot be held responsible for damage caused by improper use or modifications to the instrument, or data that is lost or destroyed.

Always turn the power off when the instrument is not in use.

Even when the power switch is in the "STANDBY" position, electricity is still flowing to the instrument at the minimum level. When you are not using the instrument for a long time, make sure you unplug the AC power adaptor from the wall AC outlet.

Special Notice

- This manual is the exclusive copyrights of Yamaha Corporation.
- The screen displays as illustrated in this manual are for instructional purposes, and may appear somewhat different from the screens which appear on your computer.
- This product incorporates and bundles computer programs and contents in which Steinberg Media Technologies GmbH and Yamaha Corporation own copyrights or with respect to which it has license to use others' copyrights. Such copyrighted materials include, without limitation, all computer software, style files, MIDI files, WAVE data, musical scores and sound recordings. Any unauthorized use of such programs and contents outside of personal use is not permitted under relevant laws. Any violation of copyright has legal consequences. **DON'T MAKE, DISTRIBUTE OR USE ILLEGAL COPIES.**
- Copying of the commercially available musical data including but not limited to MIDI data and/or audio data is strictly prohibited except for your personal use.
- Steinberg and Cubase are the registered trademarks of Steinberg Media Technologies GmbH.
- Windows is a registered trademark of Microsoft® Corporation in the United States and other countries.
- Apple, Mac and Macintosh are trademarks of Apple Inc., registered in the U.S. and other countries.
- ADAT is a trademark of Alesis registered in U.S. and other countries.

adat

- FireWire and the FireWire symbol are trademarks of Apple, Inc., registered in the U.S. and other countries. The FireWire logo is a trademark of Apple, Inc.
- The company names and product names in this manual are the trademarks or registered trademarks of their respective companies.



Introduction

Thank you for purchasing the ADVANCED INTEGRATION DSP STUDIO MR816 CSX/MR816 X. This audio interface device enables you to transfer the digital/analog audio signals between the DAW software such as Cubase on your computer and the audio equipments including the electronic musical instrument, guitar and microphone. Furthermore, this product features the Link functions with the Cubase resulting that you can build the convenient music production studio.

The MR816 CSX/MR816 X provides the two manuals: "Getting Started" manual (this manual) and "Operation Manual" (PDF file included in the accessory disk). The Getting Started manual (this book) covers the introduction for using the MR816 CSX/MR816 X, such as system requirements of a computer for installing the necessary software, how to install the necessary software and how to connect the audio device and computer to this product. On the other hand, the Operation Manual (PDF file) covers the details about the functions of the MR816 CSX/MR816 X and instructions. Please read the Getting Started manual (this book) at first, then read the Operation Manual (PDF file) so that you can take full advantage of its superlative features and enjoy trouble-free operation for years to come. After reading this manual, please keep it available for future reference.

Main Features

Link with Cubase (*1)

Install the included software and you can link the MR816 CSX/MR816 X with Cubase for seamless operation—for example, monitoring the Cubase-mixed sound with no latency, and one-button-press assignment of audio inputs to Cubase tracks. Owners of Cubase 4.5 or later can also use the convenient Control Room feature with the MR816. For details about the Link function, refer to page 22.

*1 This product is designed assuming that Cubase 4.5 or later is used. The Cubase versions that are compatible with the Link function are version 4.5 or later, such as Cubase 4.5 and Cubase AI 4.5. For details, refer to page 22.

High-quality sound

The MR816 CSX/MR816 X is equipped with eight discrete head amplifiers using the Inverted Darlington Circuitry Design, for superior, highly musical sound with minimal distortion and noise.

Mixer function and useful monitoring

The mixer function (with DSP processor) lets you input up to sixteen channels of audio and mix down to eight channels of stereo. Two of these stereo outputs can be assigned for separate monitoring through headphones connected to the PHONE jacks on the front panel. What's more, the monitor sound can be processed with the REV-X reverb effect, allowing you to have a full and natural monitor sound without latency delays.

Versatile input/output jacks for professional studio use

The MR816 CSX/MR816 X is equipped with eight mono input jacks (MIC/LINE/HI-Z jack and MIC/LINE jack on the front panel and MIC/LINE/INPUT jacks on the rear panel) which accept both XLR-3-31 and TRS phone plug type connectors. In addition, each of these jacks provides a [PAD] button which enables connection of a wide range of instruments and devices—from condenser microphones to synthesizers and other line-level instruments.

The MIC/LINE/HI-Z jack is compatible with HI-Z (high impedance) inputs, allowing you to connect instruments with high output impedance, such as electric guitar or bass. The MIC/LINE/HI-Z jack and MIC/LINE jack are routed to the INSERT I/O jacks on the rear panel, letting you apply a desired effect (different from the internal one) to the sound already input from the external device. Furthermore, the WCL (Word Clock) jack and the digital jacks are also provided for comprehensive compatibility with devices and applications in professional studios.

Sweet Spot Morphing Channel Strip effect (MR816 CSX only)

The MR816 CSX is equipped with eight independent blocks of the Sweet Spot Morphing Channel Strip effect using the new Sweet Spot Morphing Technology developed by Yamaha. These give you a variety of specially programmed compressor/equalizer settings into which are distilled years of extensive professional engineering experience, letting you quickly and easily achieve professional-level results for your sound by simple panel operations. When connecting the MR816 CSX to a computer, this effect can be applied to the audio signal transferred/recorded to the DAW software (such as Cubase) as well as the sound from audio equipment such as keyboards, guitars and microphones. In addition, a dedicated window lets you create more detailed settings for this effect unit.

REV-X effect

The MR816 CSX/MR816 X is equipped with the REV-X Effect, a high-quality digital reverb effect unit which can be applied to all input channels. When connecting the MR816 CSX/MR816 X to a computer, this reverb can be applied to the input signal coming from the DAW software as well as the sound from audio equipment such as keyboards, guitars and microphones. In addition, a dedicated window lets you create more detailed settings for this effect unit.

Daisy-chain connection of up to three devices

Up to three MR816 CSX/MR816 Xs (two devices when the Sample Rate is set to 88.2 kHz or 96 kHz) can be connected in daisy-chain fashion. You can expand the input/output channels simply by connecting the MR816 CSX/MR816 X additionally to the existing device via an IEEE1394 cable.

Package Contents

This package contains the following items. After opening the package, make sure that it includes all of the items listed below.

- **MR816 CSX/MR816 X**
- **AC power adaptor (PA-30 or equivalent)***
- **MR816 CSX/MR816 X Getting Started (this book)**
- **IEEE1394 cable**
- **Cubase AI 4 DVD-ROM**
- **TOOLS for MR CD-ROM**
- **Rubber stoppers x 4****

* May not be included depending on your particular area. Please check with your Yamaha dealer.

** The rubber stoppers included in this package can be attached to the specified location on the bottom panel of this device to prevent slippage when it is to be used on a slipper surface.

About the Disks included in the Package

Disk Contents

Each of the included disks contains the following software (driver).

TOOLS for MR CD-ROM

- **TOOLS for MR installer**

Executing this installer will install "Yamaha Steinberg FW Driver," "Steinberg MR Editor" and "Steinberg MR Extension" in order.

- **MR816 CSX/MR816 X Operation Manual (PDF)**

For complete and detailed information about the MR816 CSX/MR816 X, refer to this PDF manual.

Cubase AI 4 DVD-ROM

- **Cubase AI 4 (Windows/Macintosh)**

IMPORTANT

- Before breaking the seal of these disk packages, please read carefully the Software License Agreement on page 26 and 27 of this manual. By opening the each of disk packages, you indicate your agreement with the use terms of the software and concurrence with the Software License Agreement.

NOTE

- To view PDF files, you must install Adobe Reader on your computer. If you do not have Adobe Reader, you can download the application from the Adobe website at the following URL:
<http://www.adobe.com/>

Special Notices for the Accessory Disks

CAUTION

- Steinberg and Yamaha make no representations or warranties with regard to any problems while attempting to copy the disks or software and cannot be held responsible for the results of attempts to copy the data.
- These disks are NOT for audio/visual purpose. Do not attempt to play the disks on a CD/DVD player. Doing so may result in irreparable damage to your audio CD/DVD player.
- The software (Yamaha Steinberg FW Driver, Steinberg MR Editor and Steinberg MR Extension) included in the TOOLS for MR CD-ROM and the copyrights thereof are under exclusive ownership by Yamaha.
- The software included in the Cubase AI 4 DVD-ROM and the copyrights thereof are under exclusive ownership by Steinberg Media Technologies GmbH.
- Copying/reproduction of the software in whole or in part by any means is expressly forbidden without the written consent of the manufacturer.
- For latest information of the software included in the accessory disks, refer to the web site below. Future upgrades of application and system software and any changes in specifications and functions will be announced separately on the web site.
http://service.steinberg.de/goto.nsf/show/supportupdates_mr816_gb

System Requirements for Software

The system requirements below are necessary for installing software included in the accessory disks (TOOLS for MR and Cubase AI 4).

NOTE

- Note that the system requirements may be slightly different from those described below depending on the particular operating system.
- For details on minimum requirements for other DAW software, refer to the respective owner's manual.

■ Windows

TOOLS for MR

OS	Windows XP Professional SP2/XP Home Edition SP2/Vista (32bit)
Computer	Core/Pentium/Celeron family or Athlon family CPU, with an S400 (400 Mbps) IEEE1394 (FireWire) or i.LINK terminal (*1).
Hard Disk	Free disk space of 160 MB or more; high-speed hard disk

Windows XP Professional SP2/XP Home Edition SP2

- **Recommended system requirements (*2)**
 - Single MR816 CSX/MR816 X:
CPU : Core 2 Duo 1.66GHz or more
Memory : 512 MB or more
 - Three MR816 CSX/MR816 Xs:
CPU : Core 2 Duo 1.66GHz or more
Memory : 1GB or more
- **Minimum system requirements (*2)**
CPU : Pentium 1.4 GHz or more, or Celeron 1.7 GHz or more
Memory : 512 MB or more

Windows Vista (32bit)

- **Recommended system requirements (*2)**
 - Single MR816 CSX/MR816 X:
CPU : Core 2 Duo 2.13GHz or more
Memory : 1 GB or more
 - Three MR816 CSX/MR816 Xs:
CPU : Core 2 Duo 2.13GHz or more
Memory : 2GB or more
 - **Minimum system requirements (*2)**
CPU : Pentium 1.4 GHz or more, or Celeron 1.7 GHz or more
Memory : 512 MB or more
- *1 The computer must have an IEEE 1394 (FireWire or i.LINK, etc.) connector. If there is no connector, install an IEEE1394 interface card (PCI or PC). For details, refer to the following URL:
http://service.steinberg.de/goto.nsf/show/supportupdates_mr816_gb
- *2 The system requirements listed here apply when playing the following audio/MIDI data on the included Cubase AI 4 software. This may differ depending on the particular DAW you are using.

Recommended system requirements (single MR816 CSX/MR816 X)

- Frequency/resolution: 44.1 kHz/24 bit
- Audio playback tracks: 16
- Audio recording tracks: 1
- MIDI playback tracks: 2
- Send effects (plug-in): 3
- Insert effects (plug-in): 9
- Plug-in synthesizer: 2
- Latency: about 6 msec

Recommended system requirements (three MR816 CSX/MR816 Xs)

- Frequency/resolution: 44.1 kHz/24 bit
- Audio playback tracks: 16
- Audio recording tracks: 2
- Latency: about 6 msec

Minimum system requirements

- Frequency/resolution: 44.1 kHz/24 bit
- Audio playback tracks: 15
- Send effects (plug-in): 3
- Insert effects (plug-in): 9
- Plug-in synthesizer: none
- Latency: about 50 msec

■ Macintosh

□ TOOLS for MR

- OS** Mac OS X 10.4.x, Mac OS X 10.5.x
- Hard Disk** Free disk space of 100 MB or more; high-speed hard disk

• Recommended system requirements (*1)

- Single MR816 CSX/MR816 X:
 - CPU : PowerPC G5 2.0 GHz Dual or higher, or Core Solo 1.5 GHz or more
 - Memory : 1 GB or more
- Three MR816 CSX/MR816 Xs:
 - CPU : Core Duo 2.16 GHz or more
 - Memory : 1 GB or more

• Minimum system requirements (*1)

- CPU : PowerPC G4 1GHz or more
- Memory : 512 MB or more

*1 The system requirements listed here apply when playing the following audio/MIDI data on the included Cubase AI 4 software. This may differ depending on the particular DAW you are using.

Recommended system requirements (single MR816 CSX/MR816 X)

- Frequency/resolution: 44.1 kHz/24 bit
- Audio playback tracks: 16
- Audio recording tracks: 1
- MIDI playback tracks: 2
- Send effects (plug-in): 3
- Insert effects (plug-in): 9
- Plug-in synthesizer: 2
- Latency: about 5 msec

NOTE

- When using a laptop or notebook computer, a built-in IEEE1394 terminal may not be available. If this is the case, install an appropriate PC interface card.

□ Cubase AI 4.5

- OS:** Windows XP Professional/XP Home Edition/Vista (32 bit)
- CPU:** Pentium/Athlon 1.4GHz or more
- Memory:** 512 MB or more
- Image resolution:** 1280 x 800 - full color
- Hard disk:** 1 GB or more

IMPORTANT

- A DVD drive is required for installation.
- In order to have continuous use of Cubase AI 4, including support and other benefits, you will need to register the software and activate your software license by starting it while the computer is connected to the Internet.

Recommended system requirements (three MR816 CSX/MR816 Xs)

- Frequency/resolution: 44.1 kHz/24 bit
- Audio playback tracks: 16
- Audio recording tracks: 2
- Latency: about 5 msec

Minimum system requirements

- Frequency/resolution: 44.1 kHz/24 bit
- Audio playback tracks: 15
- Send effects (plug-in): 3
- Insert effects (plug-in): 9
- Plug-in synthesizer: none
- Latency: about 50 msec

□ Cubase AI 4.5

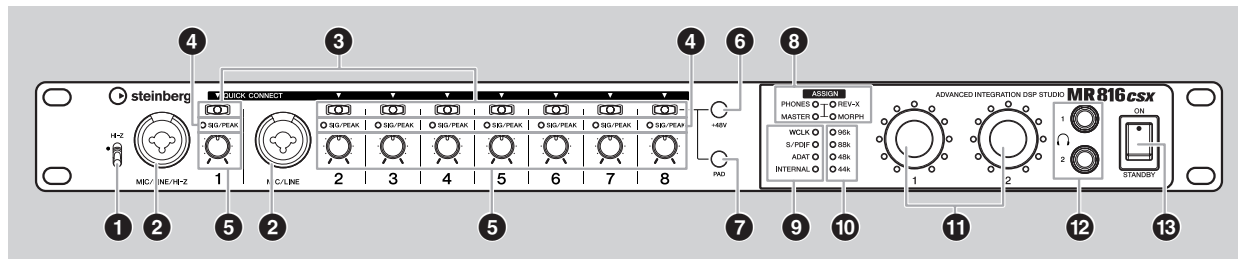
- OS:** Mac OS X 10.4.x, Mac OS X 10.5.x
- CPU:** PowerPC G4 1GHz or Core Solo 1.5 GHz or more
- Memory:** 512 MB or more
- Image resolution:** 1280 x 800 - full color
- Hard disk:** 1 GB or more

IMPORTANT

- A DVD drive is required for installation.
- In order to have continuous use of Cubase AI 4, including support and other benefits, you will need to register the software and activate your software license by starting it while the computer is connected to the Internet.

The Controls and Connectors

Front Panel



- 1 [HI-Z] switch
- 2 MIC/LINE/HI-Z jack 1 (analog input jack 1) and MIC/LINE jack 2 (analog input jack 2)
- 3 [QUICK CONNECT] buttons (with LED lamps)
- 4 [SIG/PEAK] lamps
- 5 Gain knobs 1 – 8
- 6 [+48V] button (phantom power button; with LED lamps)
- 7 [PAD] button (with LED lamps)

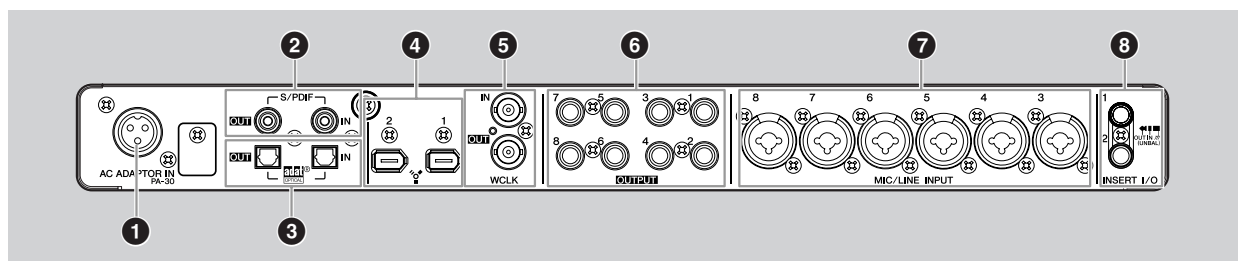
- 8 [ASSIGN] lamps

NOTE

The [MORPH] lamp is available only on the MR816 CSX. The MR816 X is not equipped with the [MORPH] lamp.

- 9 Word Clock Source lamps
- 10 Sample Rate lamps
- 11 Multi Function encoder knobs 1 and 2 (with LED lamps)
- 12 Headphone jacks 1 and 2
- 13 [STANDBY/ON] switch

Rear Panel



- 1 AC ADAPTOR IN jack
- 2 S/PDIF IN/OUT jack
- 3 OPTICAL IN/OUT jack
- 4 IEEE1394 jack 1 and 2
- 5 WCLK IN/OUT jack (wordclock in/out jack)
- 6 OUTPUT jacks 1 – 8 (analog output jacks 1 – 8)
- 7 MIC/LINE INPUT jacks 3 – 8 (analog input jacks 3 – 8)
- 8 INSERT I/O jacks 1 and 2

Turning the Power On and Off

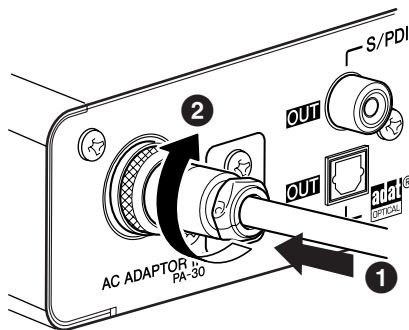
Power Supply

- 1 Make sure that the [STANDBY/ON] switch of the MR816 CSX/MR816 X is in the STANDBY position.

⚠ WARNING

- Use only the included power adaptor (PA-30) or an equivalent recommended by Yamaha). Use of a different adaptor may result in equipment damage, overheating, or fire. Doing so will also immediately void the product warranty, even if the effective warranty period has not expired.

- 2 Connect the power adaptor to the AC ADAPTOR IN jack (1) on the rear panel of the MR816 CSX/MR816 X, then turn the fastening ring clockwise (2) to secure the connection.



- 3 Plug the power adaptor into a standard household power outlet.

NOTE

- Be sure to unplug the adaptor from the outlet when you are not using the MR816 CSX/MR816 X, or when lightning storms are expected in your area.
- Make sure that there is adequate distance between the power adaptor and the MR816 CSX/MR816 X. Otherwise, noise may be generated.

Turning the Power On and Off

- 1 To turn the power on, press the [STANDBY/ON] switch to the ON position.
- 2 To turn the power off, press the [STANDBY/ON] switch to the STANDBY position.

⚠ CAUTION

- Note that a small amount of current continues to flow while the switch is in the STANDBY position. If you do not plan to use the MR816 CSX/MR816 X for an extended period of time, please be sure to unplug the adaptor from the wall outlet.

NOTE

- To prevent sudden loud sounds from being produced from your speakers, power-on your equipment starting at the audio source (instrument, mic, CD player, etc.) and working downstream.

Example:

Instruments, microphones, CD players, and other peripheral devices → MR816 CSX/MR816 X → Powered speakers (power amps)

When turning the power off, reverse the above sequence.

⚠ WARNING

- Before you connect external devices to the MR816 CSX/MR816 X, turn off the power to all devices. Before turning the power on or off to all components, set all volume levels to minimum (0). Otherwise, electrical shock or damage to the components may occur.

Software Installation

To use the MR816 CSX/MR816 X, you must first install the software on the computer. This section explains the software installation. Install Cubase AI 4 before you install TOOLS for MR.

NOTE

- If you have already installed a version of Cubase (page 21) compatible with the Link function, such as Cubase 4.5, the instructions for "Installing Cubase AI 4" are not necessary. Jump to the next section "Installing TOOLS for MR."

Installing Cubase AI 4

IMPORTANT

- Before breaking the seal of the Cubase AI 4 DVD-ROM package, please read carefully the Steinberg Software End User License Agreement (EULA) on page 27 of this manual. By opening the disk package, you indicate your agreement with the use terms of the software and concurrence with the Software End User License Agreement.

- 1 Start the computer and log on to the Administrator account.**
- 2 Insert the Cubase AI 4 DVD-ROM into the DVD-ROM drive.**

- 3 For Windows, open the "Cubase AI4 for Windows" folder and double-click on the "CubaseAI4.msi" file. For Macintosh, open the "Cubase AI4 for MacOS X" folder and double-click on the "CubaseAI4.mpkg" file.**

Follow the on-screen instructions to install Cubase AI 4.

NOTE

- In order to have continuous use of Cubase AI 4, including support and other benefits, you will need to register the software and to activate your software license by starting it while the computer is connected to the Internet. Click the "Register Now" button shown when the software is started, then fill in all required fields for registration. If you do not register the software, you will be unable to use it after a limited period of time expires.

Installing TOOLS for MR

CAUTION

- Keep in mind that noise may be generated when installing or uninstalling the TOOLS for MR. Before performing either of these operations, make sure to lower the output level of each device.

TOOLS for MR consists of three software components: Yamaha Steinberg FW Driver, Steinberg MR Editor and Steinberg MR Extension. Yamaha Steinberg FW Driver enables audio signals to be transferred between a computer and the MR816 CSX/MR816 X via IEEE1394 cables. Steinberg MR Editor enables you to perform all settings on the MR816 CSX/MR816 X (including basic parameters and system-related parameters), allowing you to remotely control the MR816 CSX/MR816 X from the computer and save parameter settings for the MR816 CSX/MR816 X as a file. Steinberg MR Extension enables you to use the Link function between the MR816 CSX/MR816 X and versions of Cubase (page 21) that are compatible with this function, such as Cubase 4.5/Cubase AI4.5. The TOOLS for MR Installer installs these three software components.

NOTE

- Make sure to install a version of Cubase (page 21) compatible with the Link function, such as Cubase 4.5/Cubase AI 4.5, before installing Steinberg MR Extension. Project templates for the MR816 CSX/MR816 X will be installed in the Cubase installation destination.

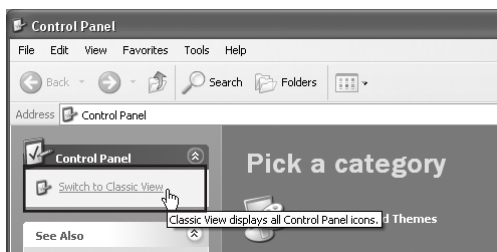
If using a Windows installed Yamaha n Driver, Yamaha AI Driver, or mLAN Driver/mLAN Tools:

- Before turning on the power of the MR816 CSX/MR816 X connected to the computer, disable these drivers. If these drivers are enabled (on), they may use the IEEE1394 interface (used for connecting the MR816 CSX/MR816 X) and cause the computer to be unable to recognize the MR816 CSX/MR816 X. Note that you may not need to disable these drivers when the computer is equipped with multiple IEEE1394 interfaces and the MR816 CSX/MR816 X is connected to a device different from that used by these drivers.
- If you're using V1.6.0 to 1.6.2 of these drivers, update them to V1.6.3 (or higher) beforehand. This is necessary since the Yamaha Steinberg FW Driver cannot work together with drivers of versions 1.6.0 to 1.6.2.

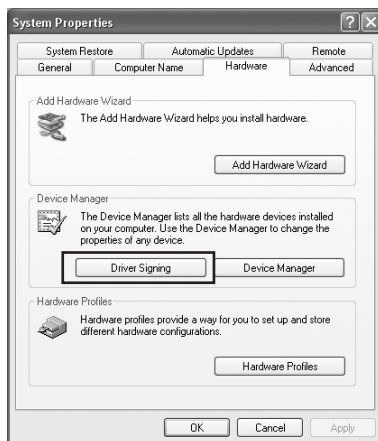
■ Windows XP:

Preparing to install

- 1 **Make sure that the power to the MR816 CSX/ MR816 X is turned off.**
- 2 **Using an IEEE1394 cable, connect the MR816 CSX/MR816 X directly to the computer (without using a hub), and disconnect all other IEEE1394 devices from the computer.**
- 3 **Start the computer and log on to the Administrator account.**
- 4 **Select [Start] (→ [Settings]) → [Control Panel]. If the control panel appears as shown below, click “Switch to Classic View” in the upper left of the window.**
All control panels and icons will be displayed.



- 5 **Go to [System] → [Hardware] → [Driver Signing] → [Driver Signing Options], and select the radio button to the left of “Ignore - Install the software anyway and don't ask for my approval” and click [OK].**



NOTE

- After completing the installation, make sure to restore the original setting if necessary.

- 6 **Check that no “!” or “x” marks appear next to “IEEE1394 Bus host controllers” in ([System] → [Hardware] →) [Device Manager].**
If one of these marks is shown, the IEEE1394/i.LINK connection cannot be used. Refer to the owner's manual of your computer for details.
- 7 **Close the Device Manager window, System Properties window and Control Panel by clicking the [OK] button or the Close button ([X]) of the windows.**
- 8 **Exit any open applications and close all open windows.**
- 9 **Insert the TOOLS for MR CD-ROM into the CD-ROM drive.**

Software Installation

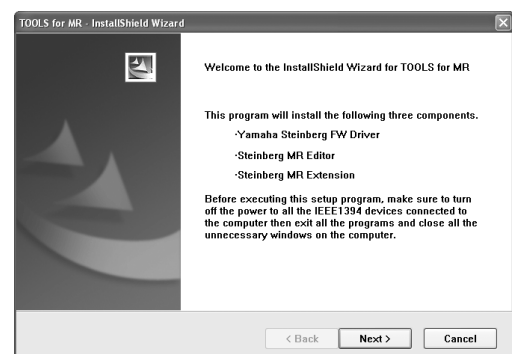
The installer will install the following three software components to your computer.

- Yamaha Steinberg FW Driver
- Steinberg MR Editor
- Steinberg MR Extension

NOTE

- Use the Cancel button or Close button to quit the installation. Quitting by using the [Ctrl]+[Alt]+[Delete] buttons or by turning off the power while installation is in process can result in problems since the installation is terminated without performing a proper uninstall.

- 10 **Open the CD-ROM, then double-click the file “setup.exe.”**
A “Welcome to the InstallShield Wizard for TOOLS for MR” window appears.



- 11 **Click [Next].**

- 12** Follow the on-screen instructions in the Setup window for Yamaha Steinberg FW Driver, Steinberg MR Editor and Steinberg MR Extension appearing in order.

NOTE 

- If the same version of each software component has already been installed in your computer, the installation window of the corresponding software will not appear.
- If a message “The software you are installing has not passed Windows Logo Testing” appears, click [Continue Anyway]. You do not need to abort the installation. If the message does not appear, proceed to the next step.

- 13** When installation is complete, a message indicating so appears. If restarting of the computer is necessary following successful completion of the installation, make sure that the radio button to the left of “Yes, I want to restart my computer now” is selected, then click [Finish] to restart the computer. If restarting the computer is unnecessary, click [Finish] to exit the installation process.

When canceling the installation:

If you've cancelled an installation before it is complete, the software may not have been installed properly. To install the software properly, resume the procedure from Step 10.

Initial settings of driver

After you've installed TOOLS for MR, perform the initial settings of the driver.

NOTE 

- A dialog box may appear asking you whether you wish to connect to Windows Update. In this case, select the radio button to the left of “Not at this time,” then click [Next].

Bus driver initial settings

- 14** The “Found New Hardware Wizard” window appears. Select the radio button next to “Install the software automatically [Recommended],” then click [Next].



- 15** When installation is complete, a message indicating so appears.

Click [Finish].

NOTE 

- If multiple IEEE1394 interfaces have been installed to the computer, the wizard appears several times. Exit the wizard each time.

Initial Settings of MR816 Series Driver

- 16** Connect the MR816 CSX/MR816 X to the computer, then turn on the power to the MR816 CSX/MR816 X.

The “Found New Hardware Wizard” window is displayed.

- 17** Select the radio button next to “Install the software automatically [Recommended],” then click [Next].

- 18** When installation is complete, a message indicating so appears.

Click [Finish].

WDM Audio driver initial settings

- 19** The “Found New Hardware Wizard” window appears. Select the radio button next to “Install the software automatically [Recommended],” then click [Next].

- 20** When installation is complete, a message indicating so appears.

Click [Finish].

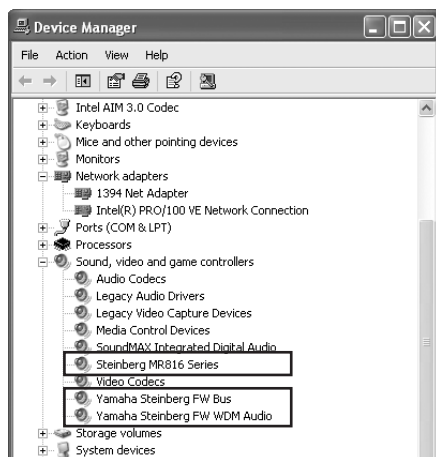
The Clock Source lamps and the Sample Rate lamps of the MR816 CSX/MR816 X flash sequentially then the flashing stops indicating that the initial settings have been completed.

NOTE 

- When a new IEEE1394 interface is installed to the computer or the second or later MR816 CSX/MR816 X is connected to the computer, the “Found New Hardware Wizard” window will appear. In that case, finish the wizard in the same way as described here.

Confirming the installation

- 1 Select [Control Panel] from the Start menu.
- 2 Double-click on the System icon to call up the System Properties window.
- 3 Select the Hardware tab and click [Device Manager].
- 4 Click on the [+] mark next to “Sound, video and game controllers,” and confirm that “Steinberg MR816 Series,” “Yamaha Steinberg FW Bus” and “Yamaha Steinberg FW WDM Audio” are listed.



Uninstalling the Software

To uninstall TOOLS for MR, you must remove the following three software components:

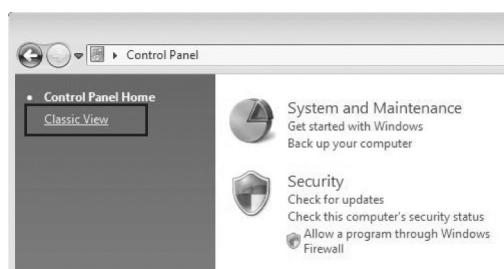
- Yamaha Steinberg FW Driver
- Steinberg MR Editor
- Steinberg MR Extension

- 1 Make sure the POWER switch on the MR816 CSX/MR816 X is set to OFF, exit from any open applications and close all open windows.
- 2 From the Start menu, select ([Settings] →) [Control Panel] → [Add or Remove Programs] to display the Add or Remove Programs panel.
- 3 Click “Change or Remove Programs” located in the upper left, then select “Yamaha Steinberg FW Driver,” “Steinberg MR Editor” and “Steinberg MR Extension” from the list in the right panel.
- 4 To uninstall the software, click [Change or Remove] / [Remove].
Follow the instructions to remove the software.

■ Windows Vista:

Preparing to install

- 1 **Make sure that the power to the MR816 CSX/ MR816 X is turned off.**
- 2 **Using an IEEE1394 cable, connect the MR816 CSX/MR816 X directly to the computer (without using a hub), and disconnect all other IEEE1394 devices from the computer.**
- 3 **Start the computer and log on to the Administrator account.**
- 4 **Select [Start] → [Control Panel]. If the control panel appears as shown below, click “Switch to Classic View” in the upper left of the window.**
All control panels and icons will be displayed.



- 5 **Double-click the Device Manager icon.**

NOTE

- If the “User Account Control” window appears, click [Continue]. A dialog box appears.

- 6 **Check that no “!” or “x” marks appear next to “IEEE1394 Bus host controllers.”**
If one of these marks is shown, the IEEE1394/i.LINK connection cannot be used. Refer to the owner’s manual of your computer for details.
- 7 **Click the Close button ([x]) at the top right of the Device Manager window, then click the Close button ([x]) at the top right of the Control Panel window to close it.**
- 8 **Exit any open applications and close all open windows.**
- 9 **Insert the TOOLS for MR CD-ROM into the CD-ROM drive of your computer.**

Software Installation

The installer will install the following three software components to your computer.

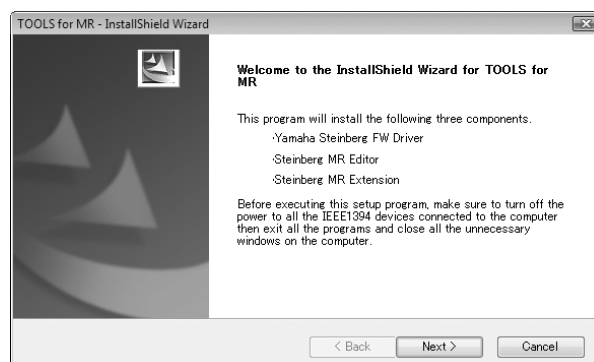
- Yamaha Steinberg FW Driver
- Steinberg MR Editor
- Steinberg MR Extension

NOTE

- Use the Cancel button or Close button to quit the installation. Quitting by using the [Ctrl]+[Alt]+[Delete] buttons or by turning off the power while installation is in process can result in problems since the installation is terminated without performing a proper uninstall.

- 10 **Open the CD-ROM then double-click the file “setup.exe.”**

A “Welcome to the InstallShield Wizard for TOOLS for MR” window appears.



NOTE

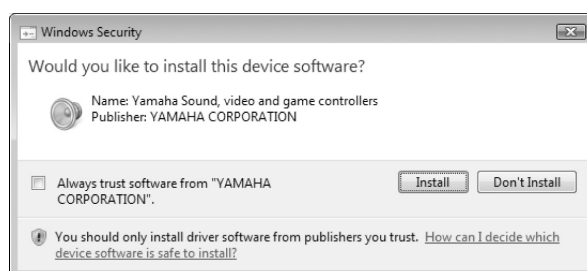
- If the “User Account Control” window appears, click [Continue]. A dialog box appears.

- 11 **Click [Next].**

- 12 **Follow the on-screen instructions in the Setup window for Yamaha Steinberg FW Driver, Steinberg MR Editor and Steinberg MR Extension appearing in order.**

NOTE

- If the same version of each software component has already been installed in your computer, the installation window of the corresponding software will not appear.
- If the “Windows Security” window appears, confirm that the publisher is “YAMAHA CORPORATION,” then click [Install].



- 13** When installation is complete, a message indicating so appears. If restarting of the computer is necessary following successful completion of the installation, make sure that the radio button to the left of “Yes, I want to restart my computer now” is selected, then click [Finish] to restart the computer. If restarting the computer is unnecessary, click [Finish] to exit the installation process.

When canceling the installation

If you've cancelled an installation before it is complete, the software may not have been installed properly. To install the software properly, resume the procedure from Step 10.

Initial settings of driver

After you've installed TOOLS for MR, perform the initial settings of the driver.

NOTE

- If the “User Account Control” window appears, click [Continue].

- 14** Connect the MR816 CSX/MR816 X to the computer, then turn on the power to the MR816 CSX/MR816 X.

The Clock Source lamps and the Sample Rate lamps of the MR816 CSX/MR816 X flash sequentially then the flashing stops indicating that the initial settings have been completed.

NOTE

- If the Word Clock Source lamps and Sample Rate lamps of the MR816 CSX/MR816 X do not flash in order after waiting a while, restart the computer.
- If the “User Account Control” window appears when you install a new IEEE 1394 interface to the computer, click [Continue].

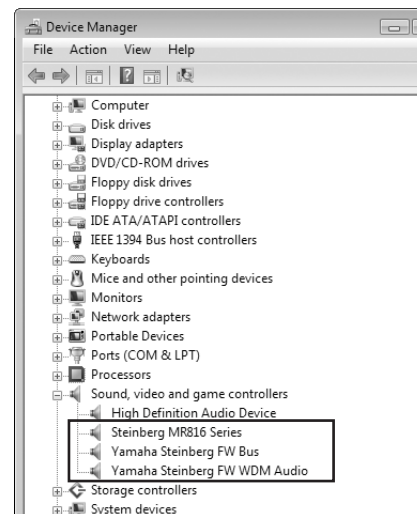
Confirming the installation

- 1 Select [Control Panel] from the Start menu.
- 2 Double-click the Device Manager icon.

NOTE

- If the “User Account Control” window appears, click [Continue]. A dialog box appears.

- 3 Click on the [+] mark next to “Sound, Video and game controllers” and confirm that “Steinberg MR816 Series,” “Yamaha Steinberg FW Bus” and “Yamaha Steinberg FW WDM Audio” are listed.



Uninstalling the Software

To uninstall TOOLS for MR, you must remove the following three software components:

- Yamaha Steinberg FW Driver
- Steinberg MR Editor
- Steinberg MR Extension

- 1 Make sure that the power to the MR816 CSX/MR816 X is turned off. Exit any open applications and close all open windows.
- 2 From the Start menu, select [Control Panel] → [Programs and Features] to display the Uninstall or change a program panel.
- 3 Select “Yamaha Steinberg FW Driver,” “Steinberg MR Editor” and “Steinberg MR Extension” from the list.
- 4 To uninstall the software, click [Uninstall]/[Uninstall/Change].

If the “User Account Control” window appears, click [Continue]. A dialog box appears. Follow the instructions to remove the software.

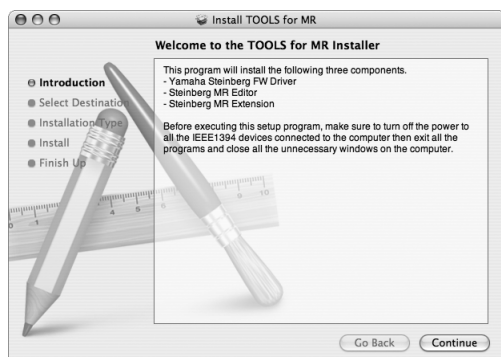
■ Macintosh:

Preparing to install

- 1 **Make sure that the power to the MR816 CSX/MR816 X is turned off.**
- 2 **Using an IEEE1394 (Firewire) cable, connect the MR816 CSX/MR816 X directly to the computer (without using a hub), and disconnect all other IEEE1394 devices from the computer.**
- 3 **Start the computer and log in to the Administrator account.**
- 4 **Exit any open applications and close all open windows.**
- 5 **Insert the TOOLS for MR CD-ROM into the CD-ROM drive of your computer.**

Software Installation

- 6 **Open the CD-ROM, then double-click the file “TOOLS for MR.mpkg.”**
- 7 **A dialog box appears asking if you want to install the software. Click [Continue].**
The “Welcome to the TOOLS for MR Installer” window appears.



- 8 **Click [Continue].**
The “Select Destination” window appears.

NOTE

- Only the boot disk can be selected for the installer.
- If you are using Mac OS X 10.5 (Leopard), click [Continue] to call up the “Installation Type” window.

- 9 **Click [Continue].**
The “Installation Type” window appears.

- 10 **Click [Install].**
The “Authenticate” window appears.

NOTE

- If an older version of each software component has already been installed in your computer, click [Update].

- 11 **Enter the Administrator name and the password, then click [OK].**
A message appears prompting you to restart the computer after the installation.

- 12 **Click [Continue Installation].**
The “Install” window appears indicating the installation progress. When the installation is complete, the “Finish Up” window appears.

NOTE

- Installation cannot be canceled after clicking [Continue Installation].

- 13 **Click [Restart] to restart the computer.**
- 14 **Connect the MR816 CSX/MR816 X to the computer, then turn on the power to the MR816 CSX/MR816 X.**
The Word Clock Source lamps and Sample Rate lamps of the MR816 CSX/MR816 X flash in order then stop, indicating that the initial settings are completed.

NOTE

- If Word Clock Source lamps and Sample Rate lamps of the MR816 CSX/MR816 X do not flash in order after waiting a while, restart the computer.

When canceling the installation

If you've cancelled an installation before it is complete, the software may not have been installed properly. To install the software properly, resume the procedure from Step 6.

Confirming the installation

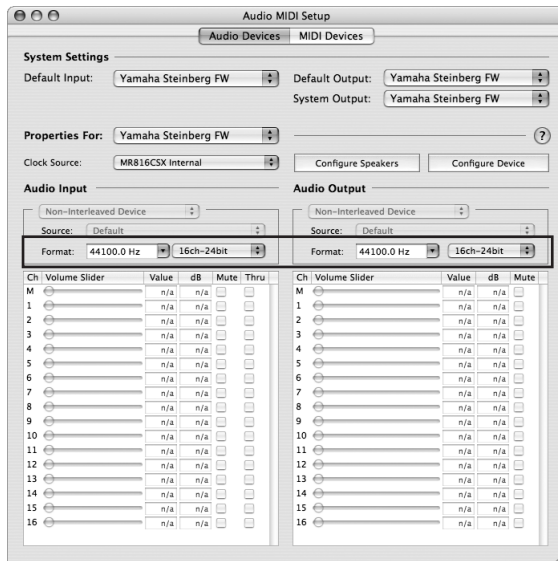
Audio MIDI Setup (Audio Devices)

- 1 **From the hard disk to which the OS is installed (usually Macintosh HD), click [Applications] → [Utilities], then double-click [Audio MIDI Setup].**
The “Audio MIDI Setup” window appears.
- 2 **Click [Audio Devices], then select “Yamaha Steinberg FW” from the pull-down menu in [Properties For].**
The current audio settings are shown in the [Audio Input] and [Audio Output] fields.

NOTE

- By selecting “Yamaha Steinberg FW” for [Default Output] in System Settings, you can output audio signals of the system

sounds and audio player software (e.g., iTunes, etc.) from the MR816 CSX/MR816 X.



Uninstalling the Software

To uninstall TOOLS for MR, you must remove the following three software components:

- Yamaha Steinberg FW Driver
- Steinberg MR Editor
- Steinberg MR Extension

Removing Yamaha Steinberg FW Driver

Remove the following folders and files from the boot disk (usually Macintosh HD).

```

/Applications/Yamaha/FWDriver/
  Yamaha Steinberg FW Control Panel.app
  YamahaFWCM.app
/Library/Application Support/Yamaha/FWDriver/HAL/
  YamahaFWHAL.bundle
/Library/Audio/MIDI Devices/Yamaha/Images/
  FW_110006.tiff
  FW_110007.tiff
  FW_110008.tiff
  FW_110009.tiff
/Library/Audio/MIDI Drivers/
  YamahaFWMIDI.plugin
/Library/LaunchAgents/
  com.yamaha.YamahaFWCM.plist
/Library/PreferencePanes/
  Yamaha Steinberg FW.prefPane
/Library/Preferences/
  com.yamaha.FWDriver.plist
/Library/Receipts/
  YamahaFWAudioDriver.pkg
  YamahaFWCM.pkg
  YamahaFWCP.pkg
  YamahaFWDriverplist.pkg
  YamahaFWEnabler.pkg
  YamahaFWHAL.pkg
  YamahaFWMIDIIcon.pkg
  YamahaFWMIDIPlugIn.pkg

```

```

/System/Library/Extensions/
  YamahaFWAudioDriver.kext
/System/Library/Frameworks/
  YamahaFWEnabler.framework
/User/{Account name}/Library/Preference/
  com.yamaha.YamahaFWCM.plist

```

* "{Account name}" indicates the account name when Yamaha Steinberg FW Driver is installed.

Removing Steinberg MR Editor

Remove the following folders and files from the boot disk (usually Macintosh HD).

NOTE

- Keep in mind that files with the extension ".tff" may be in use by other Yamaha applications. We recommend that you avoid deleting any of these files unless necessary.

```

/Applications/
  MREditor.app
/Library/Fonts/
  Yamaha EBM7 Bold.tff
  Yamaha EBM7 Regular.tff
  Yamaha EBM8 Expanded.tff
  Yamaha EBM8 Regular.tff
  Yamaha EBM10 Bold.tff
  Yamaha EBM15 Condensed.tff
/Library/Receipts/
  Steinberg MR Editor.pkg

```

Removing Steinberg MR Extension

- 1** Select [Library] → [Application Support] → [Steinberg] → [components], then delete the files named "mr_extension.bundle."
 - 2** Open the [Applications] folder, then click the "Cubase AI4" icon while holding down the [control] key.
 - 3** Select "Show Package Contents" from the context menu.
- NOTE**
- When using Cubase 4.5, etc., click the corresponding icon to call up the context menu.
- 4** Select [Contents] → [templates], then delete the files named "Steinberg XXX.cpr" ("xxx" indicates specific model name, etc.).

This completes the uninstallation of TOOLS for MR.

Connecting to an External Device

Cautions when connecting to external devices

When connecting the MR816 CSX/MR816 X to external audio devices and a computer, follow the instructions below.

! WARNING

- Before you connect external devices to the MR816 CSX/MR816 X, turn off the power to all devices after setting all volume levels to minimum (0). Otherwise, electrical shock or damage to the components may occur.

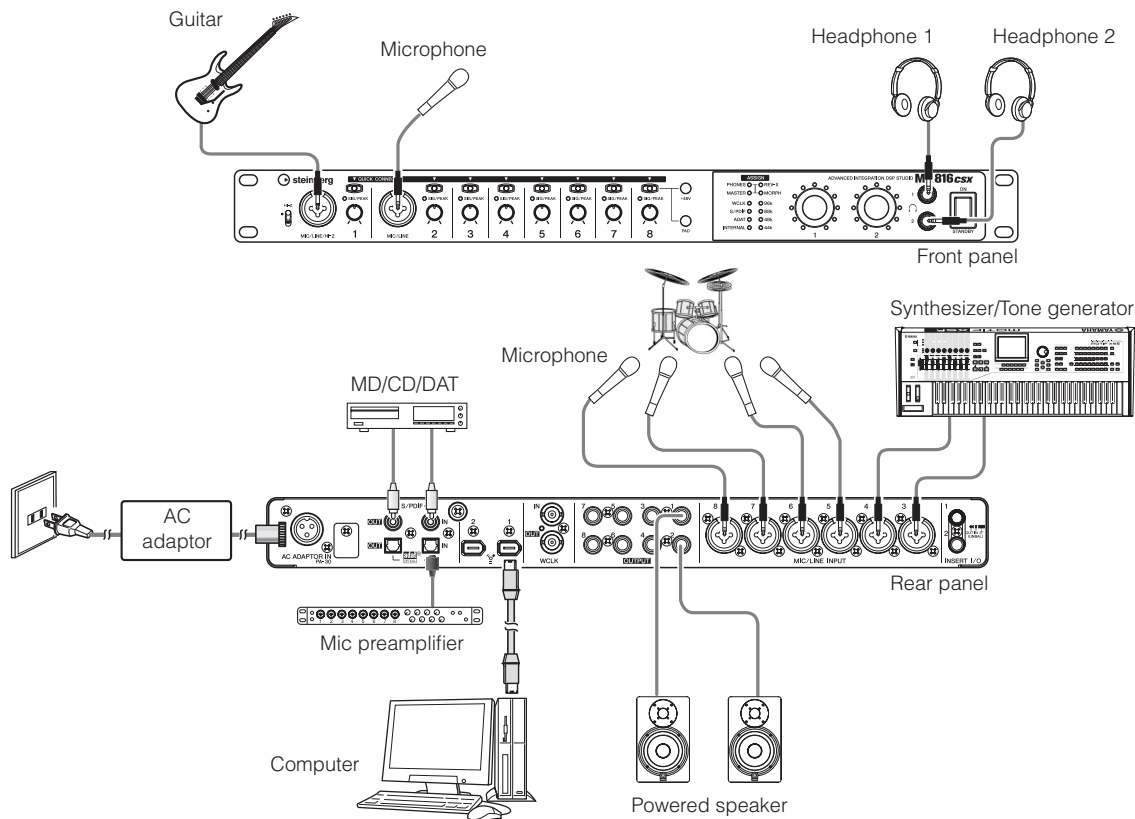
- 1** Connect the instrument or microphone to MR816 CSX/MR816 X then connect the MR816 CSX/MR816 X to the computer using an IEEE1394 cable.
- 2** Start the computer.
- 3** Turn on the power to all the devices in the following order: connected instruments and microphones → MR816 CSX/MR816 X → monitor speakers. When you turn off the power, first turn down the volume of each audio device, then turn off in the reverse order: monitor speakers → MR816 CSX/MR816 X → instruments and microphones).

Connecting a single MR816 CSX/MR816 X to a computer (DAW)

The MR816 CSX/MR816 X has a comprehensive set of I/O terminals allowing you to connect digital devices such as a master recorder and mic preamp (having digital input/output) as well as analog devices such as microphone, guitar and bass.

! WARNING

- Make sure to set all volume levels to minimum (0) before disconnecting the external device.



NOTE

- The MR816 CSX/MR816 X can handle up to 16 channels of audio signal (Analog 8 channels, Digital 8 channels). Regarding the digital input/output channels, you can select which format is used: S/PDIF (coaxial/optical) or ADAT or both according to the connected audio devices. You can set this from the control panel in Cubase or Yamaha Steinberg FW Driver, and the setup screen of MR Editor. Please refer to the Operation Manual for more details.

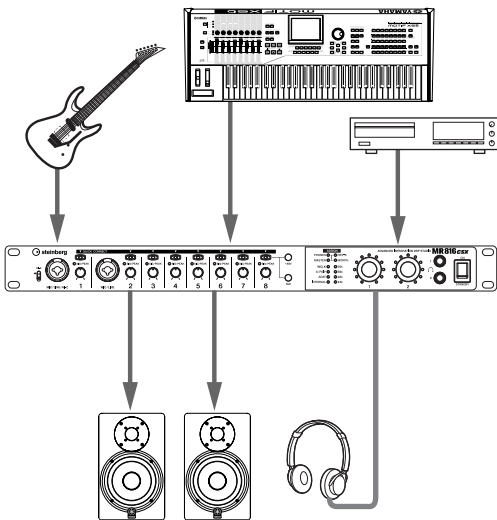
Using the MR816 CSX/MR816 X without a computer

The settings of the internal mixer and system edited on the MR Editor can be stored to the MR816 CSX/MR816 X by storing the settings as a Scene and recalling a Scene on the MR Editor on the computer. This means that the last settings stored or recalled on MR Editor can be used even if the MR816 CSX/MR816 X is disconnected from the computer. Accordingly, you can use the MR816 CSX/MR816 X as a mixer or D/A converter or A/D converter without a computer after the necessary settings on the MR Editor or Cubase are completed.

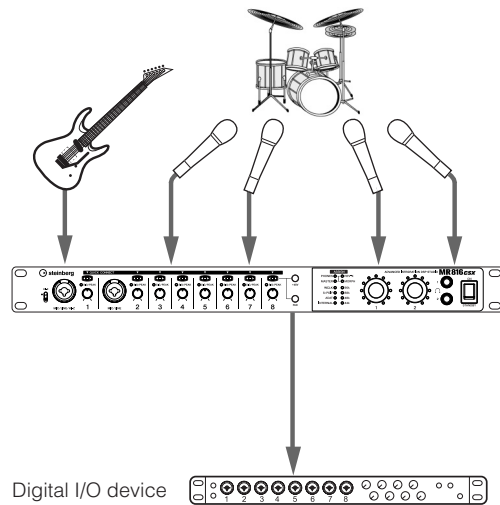
! WARNING

- Make sure to set all volume levels to minimum (0) before disconnecting the external device.

■ Using the MR816 CSX/MR816 X as a mixer



■ Using the MR816 CSX/MR816 X as an AD converter.



NOTE

- Up to three MR816 CSX/MR816 Xs (up to two when the Sample Rate is set to 88.2kHz or 96kHz) can be used simultaneously by connecting them in daisy-chain fashion to a computer via IEEE1394 cables. For details, refer to the Operation Manual (PDF file) included in the accessory CD-ROM.

Try Recording

Once you've successfully installed the device (following the instructions on page 12), you can quickly and easily record your musical performances through simple operations on the DAW software. Here, you'll connect a microphone to the MIC/LINE/HI-Z jack then record your vocal performance to a mono track in Cubase.

IMPORTANT!

- You must have a version of Cubase or Cubase AI later than 4.5 in order to use the Link function. For information about Cubase versions that are compatible with the Link function, check the web site below.
http://service.steinberg.de/goto.nsf/show/supportupdates_mr816_gb

NOTE

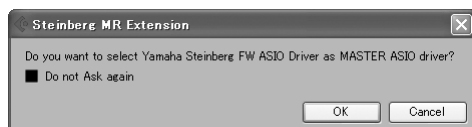
- For more information on recording using the MR816 CSX/MR816 X and Cubase as well as details about the buttons and knobs of the MR816 CSX/MR816 X, refer to the Operation Manual (PDF file).
- For details about Cubase, refer to the Operation Manual of Cubase.

1 Connect a computer to the MR816 CSX/MR816 X using an IEEE1394 cable, then start the computer.

2 Turn on the power of the MR816 CSX/MR816 X. Wait until the Word Clock Source lamps and Sample Rate lamps of the MR816 CSX/MR816 X flash in order then stop.

3 After the lamp flashing is completed, launch Cubase.

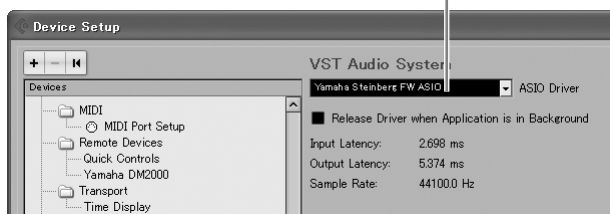
If the Steinberg MR Extension dialog box is displayed while Cubase is starting, click [OK].



4 Select [Device Setup] from the [Device] menu to open the Device Setup window. Select [VST Audio System] in the [Device] field, and check that "Yamaha Steinberg FW ASIO" or "Yamaha Steinberg FW" has been selected in "ASIO driver" field.

After you have verified this, click [OK] to close the dialog box. Now the MR816 CSX/MR816 X can be used on Cubase.

Confirm that "Yamaha Steinberg FW ASIO"/ "Yamaha Steinberg FW" are selected.



5 Select [New Project] from the [File] menu.

The new project dialog window will open and the project templates for the MR816 CSX/MR816 X will be displayed. Selecting one of these project templates will create a project in which the input/output routing of audio tracks has already been set. Here, select "Steinberg MR816CSX multi channel recording" or "Steinberg MR816X multi channel recording."



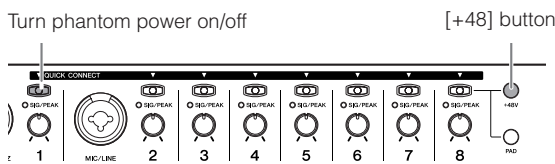
Project templates for the MR816 CSX/MR816 X

6 Select the template, then click [OK].

7 When the directory selection dialog appears, select the destination, then click [OK].

Selecting "Steinberg MR816CSX multi channel recording" or "Steinberg MR816X multi channel recording" will create audio tracks 1 – 8 on Cubase. To the audio input/output routing for each track, the input channel (input jack) of the MR816 CSX/MR816 X will be assigned then the corresponding [QUICK CONNECT] lamps will light.

- 8 Connect the microphone to MIC/LINE/Hi-Z jack 1.**
When using a phantom-powered condenser microphone, turn on the phantom power of the MIC/LINE/Hi-Z jack 1 via the following instructions.

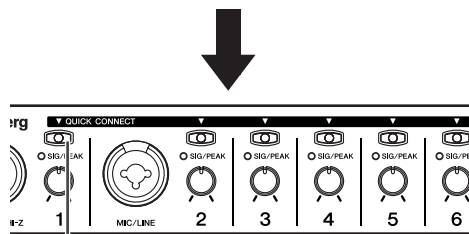
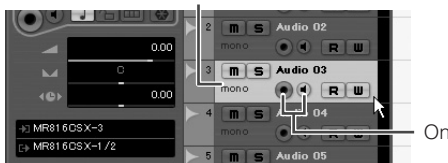


Press the [QUICK CONNECT] button 1 while holding down the [+48V] button. The lamps of the [+48V] button and [QUICK CONNECT] button 1 will light, indicating that the phantom power of the MIC/LINE/Hi-Z jack 1 is turned on.

- 9 If you want to change the recording track for the MIC/LINE/Hi-Z jack already set via the selected template, select the mono audio track to be recorded in the project window on Cubase, then click the [QUICK CONNECT] 1 button of the MR816 CSX/MR816 X.**

The lamp of the [QUICK CONNECT] button 1 flashes for a while then the input channel corresponding to the MIC/LINE/Hi-Z jack is assigned to the newly selected audio track. Turn on the Record Enable button and Monitoring button of Cubase so that you can monitor the sound being recorded.

Select the mono audio track.



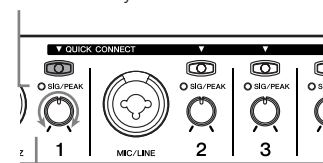
Click the [QUICK CONNECT] button

- 10 Turn the gain knob 1 to adjust the input sensitivity of the MIC/LINE/Hi-Z 1 jack.**

You can confirm the input signal level by checking the [SIG/PEAK] lamp. Adjust the input signal level by turning the knob so that the [SIG/PEAK] lamp flashes dimly in red. The input signal level for each status of the lamp is as follows: Please note that the following numeric value is a value when the clipping point is assumed to be 0dB.

When the lamp is off:	The input signal level is less than -40 dB.
When the lamp lights in green:	The input signal level is -40dB to -3dB.
When the lamp lights in red:	The input signal level is -3dB or more.

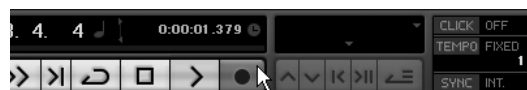
Flashes dimly in red.



Turn the knob to adjust the gain.

- 11 While playing the instrument or singing into the microphone, gradually adjust the volume of the master output and headphones.**

- 12 Click the Record button in the Transport panel to start recording.**



When you have finished recording, click the Stop button. If necessary, return to the beginning of the project, then press the Play button to listen to the recording.

Likewise, record your musical performance to the different track.

Cubase Link function

By installing the TOOLS for MR, you can use various functions linked between the MR816 CSX/MR816 X and Cubase 4.5 and Cubase AI 4.5, etc.. For more information on the Cubase Link functions, please refer to the Operation Manual (PDF file) or visit the following URL:
http://service.steinberg.de/goto.nsf/show/supportupdates_mr816_gb

Restoring the Factory-programmed Settings (Factory Set)

You can reset all the settings of the MR816 CSX/MR816 X to the initial factory-programmed one by turning the power on (pressing the [STANDBY/ON] switch to the ON position) while holding the multi function encoder knob and [PAD] button. While the operation is being performed, all the lamps of the MR816 CSX/MR816 X will flash. When the flashing stops, the operation is completed and the MR816 CSX/MR816 X starts normally with the factory settings.

CAUTION

- Never attempt to turn off the power while factory settings are being written to internal memory. Turning the power off in this state results in loss of all user data and may cause the system to freeze (due to corruption of data in the internal memory). This means that MR816 CSX/MR816 X may not be able to operate properly, even when turning the power on next time.

Troubleshooting

■ No sound is heard, or the sound is too faint.

Settings on the MR816 CSX/MR816 X and connections

- The connection cable from the external device may be broken.
- Make sure that a signal from an external device or the DAW is being sent to the MR816 CSX/MR816 X's input.
- Make sure to set the volume of the connected device to appropriate levels.
- Make sure to set the gain to an appropriate level.
- Make sure to set the [+48V] button (phantom power) to on when using a condenser microphones.
- If you are connecting an electric guitar, make sure that it is connected to an input jack that supports HI-Z, and that the [HI-Z] switch is turned on.
- Make sure that the INSERT I/O jacks are connected properly.
- Make sure to turn off the mute for each channel.
- Make sure to raise each input channel fader to an appropriate level.
- Make sure to set the volume for the headphones and master volume applied to the output jacks.
- Make sure that the speakers or headphones are connected correctly.
- Make sure that the power to your amplifier and other external devices is turned on.
- Make sure that the volume between monitor speakers is well-balanced.
- Make sure the word clock setting is correct for both the MR816 CSX/MR816 X and the external device(s).

Connection with a computer

- Confirm whether or not the lamps of the Word Clock Source and Sample Rate flash in order. Refer to "Word Clock Source lamps and Sample Rate lamps flash in order."

Settings on a computer

- Make sure to set the volume settings within your application to appropriate levels.
- Confirm whether or not the settings in Yamaha Steinberg FW Driver are appropriate. For details, refer to "Audio and MIDI signals fail to transfer between computer and the MR816 CSX/MR816 X."
- (For Windows Vista) If no sound is produced from the MR816 CSX/MR816 X by way of the WDM Audio driver after you have changed the sample rate of the MR816 CSX/MR816 X, follow the steps below. Select [Start] → [Control Panel] → [Sound] → Playback tab → Select "Line Out Yamaha Steinberg FW WDM Audio" → [Properties] → Advanced tab in the Line Out Properties window → "Restore Defaults"

■ Word Clock Source lamps and Sample Rate lamps flash in order.

Settings on the MR816 CSX/MR816 X and connections

- When the lamps flash, the MR816 CSX/MR816 X may not be recognized by the connected computer. Turn off then on of the power of the corresponding MR816 CSX/MR816 X, or disconnect an IEEE1394 cable from the MR816 CSX/MR816 X then connect again.
- When multiple MR816 CSX/MR816 Xs (or devices compatible with the Yamaha Steinberg FW Driver) are daisy-chain connected, remember that up to three devices can be connected if the Sample Rate is set to 44.1kHz/48kHz and up to two devices can be connected if the Sample Rate is set to 88.2kHz/96kHz. If more devices than this limit are connected, remove unnecessary device(s) from the daisychain connection.
- Confirm whether or not an audio device which is not compatible with the Yamaha Steinberg FW Driver has been connected. If so, remove the corresponding device from the daisy-chain connection.
- (For Windows) Confirm whether or not the Yamaha n Driver, Yamaha AI Driver or mLAN Driver/mLAN Tools is installed to the computer. If so, disable these drivers, turn the power to the corresponding device off then on again or disconnect the corresponding device from the computer then connect again.

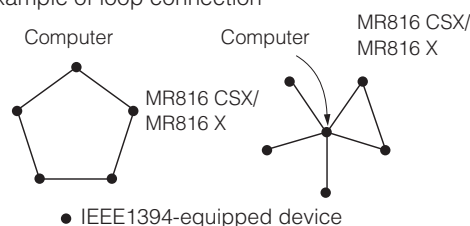
■ The device name cannot be recognized from the DAW software.

■ Audio and MIDI signals fail to transfer between computer and the MR816 CSX/MR816 X.

Connection with a computer

- Confirm the status of the Word Clock Source lamps and Sample Rate lamps. If they flash in order, refer to "Word Clock Source lamps and Sample Rate lamps flash in order."
- Make sure that the IEEE1394 cable is connected properly, and that the power to the MR816 CSX/MR816 X has been turned on. Disconnect the IEEE1394 cable once, then insert it again.
- There may be a loop connection. Check the IEEE1394 cable to make sure that none of the devices are connected in a loop.

Example of loop connection



- If any IEEE1394 devices which are not compatible with Yamaha Steinberg FW Driver are connected directly to a computer, disconnect them from the computer and make sure to connect only a device which is compatible with Yamaha Steinberg FW Driver.

- There may be multiple IEEE1394 interfaces installed on the computer and each of the multiple IEEE1394 devices may be connected to different interfaces. When using multiple devices compatible with the Yamaha Steinberg FW Driver and connecting them to the computer peer-to-peer individually (i.e., star-connection), make sure to connect them all to the jacks of a single interface.

Settings on a computer

- Confirm whether or not "TOOS for MR" has been installed correctly.
- (For Windows XP) "Add New Hardware Wizard" may not be completed correctly. If you have canceled it, restart the computer so that "Add New Hardware Wizard" appears.
- Restart the computer.
- If the new IEEE1394 interface (PC card, etc.) is connected to the computer (with the power turned on), restart the computer. The IEEE1394 device compatible with the Yamaha Steinberg FW Driver will be recognized by the computer after restarting.

■ **Cannot use other connected IEEE1394 devices correctly.**

- Disconnect the IEEE1394 device compatible with the Yamaha Steinberg FW Driver from the computer.

■ **Cannot find project templates for the MR816 CSX/MR816 X.**

Settings on a computer

- Make sure that "TOOLS for MR" has been installed properly.
- If you install Cubase after you install "TOOLS for MR," the project template files will be installed in the following location. Copy these files to the location where Cubase has been installed.

Windows:

C:/Program Files/Steinberg/Cubase 4/templates
 C:/Program Files/Steinberg/Cubase AI 4/templates

Macintosh:

/ Application/Cubase 4.app/Contents/templates/
 / Application/Cubase AI 4.app/Contents/templates/

Information for Users on Collection and Disposal of Old Equipment



This symbol on the products, packaging, and/or accompanying documents means that used electrical and electronic products should not be mixed with general household waste.

For proper treatment, recovery and recycling of old products, please take them to applicable collection points, in accordance with your national legislation and the Directives 2002/96/EC.

By disposing of these products correctly, you will help to save valuable resources and prevent any potential negative effects on human health and the environment which could otherwise arise from inappropriate waste handling.

For more information about collection and recycling of old products, please contact your local municipality, your waste disposal service or the point of sale where you purchased the items.

[For business users in the European Union]

If you wish to discard electrical and electronic equipment, please contact your dealer or supplier for further information.

[Information on Disposal in other Countries outside the European Union]

This symbol is only valid in the European Union. If you wish to discard these items, please contact your local authorities or dealer and ask for the correct method of disposal.

License Agreement for TOOLS for MR

ATTENTION SOFTWARE LICENSE AGREEMENT

PLEASE READ THIS SOFTWARE LICENSE AGREEMENT ("AGREEMENT") CAREFULLY BEFORE USING THIS SOFTWARE. YOU ARE ONLY PERMITTED TO USE THIS SOFTWARE PURSUANT TO THE TERMS AND CONDITIONS OF THIS AGREEMENT. THIS AGREEMENT IS BETWEEN YOU (AS AN INDIVIDUAL OR LEGAL ENTITY) AND YAMAHA CORPORATION ("YAMAHA").

BY DOWNLOADING, INSTALLING, COPYING, OR OTHERWISE USING THIS SOFTWARE YOU ARE AGREEING TO BE BOUND BY THE TERMS OF THIS LICENSE. IF YOU DO NOT AGREE WITH THE TERMS, DO NOT DOWNLOAD, INSTALL, COPY, OR OTHERWISE USE THIS SOFTWARE. IF YOU HAVE DOWNLOADED OR INSTALLED THE SOFTWARE AND DO NOT AGREE TO THE TERMS, PROMPTLY DELETE THE SOFTWARE.

1. GRANT OF LICENSE AND COPYRIGHT

Yamaha hereby grants you the right to use one copy of the software program(s) and data ("SOFTWARE") accompanying this Agreement. The term SOFTWARE shall encompass any updates to the accompanying software and data. The SOFTWARE is owned by Yamaha and/or Yamaha's licensor(s), and is protected by relevant copyright laws and all applicable treaty provisions. While you are entitled to claim ownership of the data created with the use of SOFTWARE, the SOFTWARE will continue to be protected under relevant copyrights.

- You may use the SOFTWARE on a single computer.
- You may make one copy of the SOFTWARE in machine-readable form for backup purposes only, if the SOFTWARE is on media where such backup copy is permitted. On the backup copy, you must reproduce Yamaha's copyright notice and any other proprietary legends that were on the original copy of the SOFTWARE.
- You may permanently transfer to a third party all your rights in the SOFTWARE, provided that you do not retain any copies and the recipient reads and agrees to the terms of this Agreement.

2. RESTRICTIONS

- You may not engage in reverse engineering, disassembly, decompilation or otherwise deriving a source code form of the SOFTWARE by any method whatsoever.
- You may not reproduce, modify, change, rent, lease, or distribute the SOFTWARE in whole or in part, or create derivative works of the SOFTWARE.
- You may not electronically transmit the SOFTWARE from one computer to another or share the SOFTWARE in a network with other computers.
- You may not use the SOFTWARE to distribute illegal data or data that violates public policy.
- You may not initiate services based on the use of the SOFTWARE without permission by Yamaha Corporation. Copyrighted data, including but not limited to MIDI data for songs, obtained by means of the SOFTWARE, are subject to the following restrictions which you must observe.
- Data received by means of the SOFTWARE may not be used for any commercial purposes without permission of the copyright owner.
- Data received by means of the SOFTWARE may not be duplicated, transferred, or distributed, or played back or performed for listeners in public without permission of the copyright owner.
- The encryption of data received by means of the SOFTWARE may not be removed nor may the electronic watermark be modified without permission of the copyright owner.

3. TERMINATION

This Agreement becomes effective on the day that you receive the SOFTWARE and remains effective until terminated. If any copyright law or provisions of this Agreement is violated, the Agreement shall terminate automatically and immediately without notice from Yamaha. Upon such termination, you must immediately destroy the licensed SOFTWARE, any accompanying written documents and all copies thereof.

4. DISCLAIMER OF WARRANTY ON SOFTWARE

You expressly acknowledge and agree that use of the SOFTWARE is at your sole risk. The SOFTWARE and related documentation are provided "AS IS" and without warranty of any kind. NOTWITHSTANDING ANY OTHER PROVISION OF THIS AGREEMENT, YAMAHA EXPRESSLY DISCLAIMS ALL WARRANTIES AS TO THE SOFTWARE, EXPRESS, AND IMPLIED, INCLUDING BUT NOT LIMITED TO THE IMPLIED WARRANT-

TIES OF MERCHANTABILITY, FITNESS FOR A PARTICULAR PURPOSE AND NON-INFRINGEMENT OF THIRD PARTY RIGHTS. SPECIFICALLY, BUT WITHOUT LIMITING THE FOREGOING, YAMAHA DOES NOT WARRANT THAT THE SOFTWARE WILL MEET YOUR REQUIREMENTS, THAT THE OPERATION OF THE SOFTWARE WILL BE UNINTERRUPTED OR ERROR-FREE, OR THAT DEFECTS IN THE SOFTWARE WILL BE CORRECTED.

5. LIMITATION OF LIABILITY

YAMAHA'S ENTIRE OBLIGATION HEREUNDER SHALL BE TO PERMIT USE OF THE SOFTWARE UNDER THE TERMS HEREOF. IN NO EVENT SHALL YAMAHA BE LIABLE TO YOU OR ANY OTHER PERSON FOR ANY DAMAGES, INCLUDING, WITHOUT LIMITATION, ANY DIRECT, INDIRECT, INCIDENTAL OR CONSEQUENTIAL DAMAGES, EXPENSES, LOST PROFITS, LOST DATA OR OTHER DAMAGES ARISING OUT OF THE USE, MISUSE OR INABILITY TO USE THE SOFTWARE, EVEN IF YAMAHA OR AN AUTHORIZED DEALER HAS BEEN ADVISED OF THE POSSIBILITY OF SUCH DAMAGES. In no event shall Yamaha's total liability to you for all damages, losses and causes of action (whether in contract, tort or otherwise) exceed the amount paid for the SOFTWARE.

6. THIRD PARTY SOFTWARE

Third party software and data ("THIRD PARTY SOFTWARE") may be attached to the SOFTWARE. If, in the written materials or the electronic data accompanying the Software, Yamaha identifies any software and data as THIRD PARTY SOFTWARE, you acknowledge and agree that you must abide by the provisions of any Agreement provided with the THIRD PARTY SOFTWARE and that the party providing the THIRD PARTY SOFTWARE is responsible for any warranty or liability related to or arising from the THIRD PARTY SOFTWARE. Yamaha is not responsible in any way for the THIRD PARTY SOFTWARE or your use thereof.

- Yamaha provides no express warranties as to the THIRD PARTY SOFTWARE. IN ADDITION, YAMAHA EXPRESSLY DISCLAIMS ALL IMPLIED WARRANTIES, INCLUDING BUT NOT LIMITED TO THE IMPLIED WARRANTIES OF MERCHANTABILITY AND FITNESS FOR A PARTICULAR PURPOSE, as to the THIRD PARTY SOFTWARE.
- Yamaha shall not provide you with any service or maintenance as to the THIRD PARTY SOFTWARE.
- Yamaha is not liable to you or any other person for any damages, including, without limitation, any direct, indirect, incidental or consequential damages, expenses, lost profits, lost data or other damages arising out of the use, misuse or inability to use the THIRD PARTY SOFTWARE.

7. GENERAL

This Agreement shall be interpreted according to and governed by Japanese law without reference to principles of conflict of laws. Any dispute or procedure shall be heard before the Tokyo District Court in Japan. If for any reason a court of competent jurisdiction finds any portion of this Agreement to be unenforceable, the remainder of this Agreement shall continue in full force and effect.

8. COMPLETE AGREEMENT

This Agreement constitutes the entire agreement between the parties with respect to use of the SOFTWARE and any accompanying written materials and supersedes all prior or contemporaneous understandings or agreements, written or oral, regarding the subject matter of this Agreement. No amendment or revision of this Agreement will be binding unless in writing and signed by a fully authorized representative of Yamaha.

License Agreement for Cubase AI 4

Steinberg Software End User License Agreement (EULA)

General

All intellectual property rights in the software belong to Steinberg Media Technologies GmbH (hereinafter: "Steinberg") and its suppliers. Steinberg permits you only to copy, download, install and use the software in accordance with the terms and conditions of this Agreement. **The product may contain product activation for protection against unlawful copying which permits a permanent use of the software only after the activation process has been totally completed.** The software can be used only together with the Steinberg key (dongle) and/or the Soft-eLicenser; the OEM software can be used only following registration and Trial Version Software can be used only for a running time of 30 days. You are only entitled to support and the right to upgrades or updates following a personal product registration; however, not for Trial Version Software. Internet access is required for the activation process.

The terms and conditions for use of Steinberg software / hardware by you, the end user (hereinafter termed "Licensee") appear below. By installing the software on your computer you agree to these terms and conditions. Please read the following text carefully in its entirety. If you do not approve these terms and conditions, you must not install this software.

In this event give back the product back to where you have purchased it (inc. all written material, the complete undamaged packing as well as the enclosed hardware) immediately but at the latest within 14 days in return for a refund of the purchase price.

1. Definitions

- 1.1. „Software“ includes (i) software files and other computer information of Steinberg and third parties, (ii) demo songs and audio and video files contained therein, (iii) written documentation (manual) belonging thereto and (iv) all modified versions and copies, which are provided by Steinberg in the form of updates, upgrades, patches and enhancements of Steinberg provided that these are not regulated by another agreement.
- 1.2. The software and all authorized copies of this software which you make are the intellectual property of Steinberg Media Technologies GmbH (hereinafter: "Steinberg") and their suppliers. The structure, organization and code of the software constitute valuable trade secrets of Steinberg and their suppliers. The software is legally protected in particular by the copyright law of the Federal Republic of Germany and other countries as well as by international treaties.

2. Grant of License

- 2.1. Steinberg grants you a non-exclusive license for the use of the software according to the terms and conditions of this Agreement. You may not lease, loan or sublicense the software.
- 2.2. The samples of so-called Loops and MIDI data remain the property of the respective rights holder (Big Fish Audio Inc., Yamaha Corporation and other licensors) and are licensed by Steinberg to you only for use in the creation of a live or recorded performance that includes the licensed samples as part of a derivative musical work created by the licensed end user. This license includes the use of the samples and MIDI data, the modification of the samples or MIDI data and the marketing of the derivative musical work without infringing any rights of copyright collecting societies and/or the owners of copyrights in any samples and MIDI data. The samples or MIDI data may not be included, whether unmodified or as part of a derivative work, in any sample or MIDI data library product.
- 2.3. If the software is protected by the Steinberg key alone, you may install a license for the software on one or at most 3 computers which are in your possession. The software may be used only on one of the computers at the same time by using the Steinberg key. If the software (i) is protected by the Soft eLicenser (alone or together with the Steinberg key) or (ii) has been sold to the first end user together with other software and/or hardware (hereinafter: "OEM software") or (iii) the software can be used only for a running time of 30 days (hereinafter: "Trial Version Software"), you may install and use a license for the software only on one computer which is in your possession.
- 2.4. The use of the software within a network is illegal where there is the possibility of a contemporaneous multiple use of the program.
- 2.5. You are entitled to prepare a backup copy of the software which will not be used for purposes other than storage purposes.

- 2.6. You shall have no further right or interest to use the software other than the limited rights as specified in this Agreement. Steinberg and their suppliers reserve all rights not expressly granted.
- 2.7. For Steinberg products including Fraunhofer mp3 coding technology, the following reference from Thomson Licensing S.A. is effective: Supply of this product does not convey a license nor imply any right to distribute content created with this product in revenue-generating broadcast systems (terrestrial, satellite, cable and/or other distribution channels), streaming applications (via Internet, intranets and/or other networks), other content distribution systems (pay-audio or audio-on-demand applications and the like) or on physical media (compact discs, digital versatile discs, semiconductor chips, hard drives, memory cards and the like). An independent license for such use is required.
For details please visit <http://mp3licensing.com>

3. Activation of the Software

- 3.1. Steinberg may use a compulsory activation of the software and a compulsory product registration of the OEM software for license control to protect the software against unlawful copying. If you do not accept the terms and conditions of this Agreement, the software will not work.
- 3.2. In such a case the product including the software may only be returned within 14 days following acquisition of the product. Upon return a claim according to § 11 shall not apply.

4. Support, Upgrades and Updates after Product Registration

- 4.1. You can only receive support, upgrades and updates following the personal product registration. Support is provided only for the current version and for the previous version during one year after publication of the new version. Steinberg can modify and partly or completely adjust the extent of the support (hotline, fora on the website etc.), upgrades and updates at any time. In case of Trial Version Software, there exists no product registration or any support, upgrades or updates.
- 4.2. The product registration is possible during the activation process or at any time later through the Internet. In such a process you are asked to agree to the storage and use of your personal data (name, address, contact, email-address, date of birth and license data) for the purposes specified above. Steinberg may also forward these data to engaged third parties, in particular distributors, for support purposes and for the verification of the upgrade or update right.
- 4.3. If you provide an address outside the EU, the data also can be transferred to third parties in countries which do not ensure an adequate level of data protection comparable to that applying within the EU.

5. Licence module (Steinberg key and/or Soft eLicenser)

- 5.1. Steinberg uses a hardware device connected through the USB connection of a computer (hereinafter "Steinberg key") and/or a protection scheme (hereinafter "Soft eLicenser") for license control (hardware and/or software dongle) in the case of many products. The Steinberg key and/or Soft eLicenser permanently saves the license information and regulates access to the software. If a Steinberg key is required for the use of the software, then the Steinberg key must be connected physically to the computer through the USB interface.
- 5.2. For the activation of the software, updates or upgrades of the software the computer which is connected to the Steinberg key and/or using the Soft eLicenser or using the OEM software must be connected to the server of SIA Syncrosoft through the Internet. If the product was delivered with the Steinberg key, the license information was already transferred to the Steinberg key. If the product was delivered with a product card (without the Steinberg key), the activation codes of the enclosed product card must be entered manually by the user upon installation and the license information must be exchanged with the server of SIA Syncrosoft.
- 5.3. In the event of OEM software, the activation codes will be sent to an email-address submitted by you during a registration. Further, the activation codes must be entered manually by the user upon installation and the license information must be exchanged with the server of SIA Syncrosoft.
- 5.4. The reinstallation of the software - on the same or another computer - is permitted only in case the already installed software cannot be used any more (e.g. following deinstallation). If the software does not use a Steinberg key, but requires activation codes, the new activation codes may be obtained from the user's online account for support created during the personal product registration. Further, the activation codes must be entered manually by the user upon installation and the license information must be exchanged with the server of SIA Syncrosoft. Steinberg may require for the provision of further activation codes e.g. your proof of purchase (invoice, receipt) and a signed assurance by fax or letter stating your name, address and that the already installed software cannot be used any more. Trial Version Software can be used on a computer also at reinstallation only altogether 30 days.
- 5.5. You can also use another computer other than the one on which the software is to be installed for the activation and transfer of license data to the Steinberg key, if the software is using a Steinberg key. However, in such a case a corresponding access software (Syncrosoft License Control Center, "LCC") must be installed on the computer connected to the Internet, which is subject to a separate licensing agreement.

6. Defect and loss of the Steinberg key

- 6.1. In the case of a defect or damage to the Steinberg key Steinberg or a third party engaged by Steinberg will check the Steinberg key. In the case of a legitimate claim the Steinberg key and the licenses included shall be replaced in return for a handling fee. The licenses will only be replaced provided that they are licenses issued by Steinberg. Further claims against Steinberg are excluded.
- 6.2. Steinberg assumes no liability or obligation if the Steinberg key is mislaid as a result of loss, theft or otherwise. Steinberg reserves the right to block the licenses saved on the Steinberg key upon being notified by the registered user of the loss. The licenses saved on the Steinberg key cannot be replaced.

7. Modification of the software

- 7.1. A modification of the software is permitted only insofar as far as the software is capable of such modification in accordance with its intended function. You may not decompile, disassemble, carry out reverse engineering or try in another manner to determine the source code of the software, unless this is permitted by law. Furthermore, you must not modify the binary code of the software to bypass in any manner the activation function or the use of the license module (Steinberg key and/or Soft eLicenser).

8. No Unbundling

- 8.1. The software usually contains a variety of different files which in its configuration ensure the complete functionality of the software. The software may be used as one product only. It is not required that you use or install all components of the software. You must not arrange components of the software in a new way and develop a modified version of the software or a new product as a result. The configuration of the software may not be modified for the purpose of distribution, assignment or resale.
- 8.2. You may also not sell the Steinberg key separately as a license; the usage rights always remain with the software, in particular with the original software data carrier (e.g. CD).

9. Assignment of Rights

- 9.1. You may assign all your rights to use the software to another person subject to the conditions that (a) you assign to this other person (i) this Agreement and (ii) the software or hardware provided with the software, packed or preinstalled thereon, including all copies, upgrades, updates, backup copies and previous versions, which granted a right to an update or upgrade on this software, (b) you do not retain upgrades, updates, backup copies and previous versions of this software and (c) the recipient accepts the terms and conditions of this Agreement as well as other regulations pursuant to which you acquired a valid software license.
- 9.2. A return of the product due to a failure to accept the terms and conditions of this Agreement, e.g. the product activation, shall not be possible following the assignment of rights.

10. Upgrades and Updates

- 10.1. You must have a valid license for the previous or more inferior version of the software in order to be allowed to use an upgrade or update for the software; the Trial Version Software, however, does not entitle to the upgrade or update. Upon transferring this previous or more inferior version of the software to third parties the right to use the upgrade or update of the software shall expire.
- 10.2. The acquisition of an upgrade or update does not in itself confer any right to use the software.
- 10.3. The right of support for the previous or inferior version of the software expires upon the installation of an upgrade or update.

11. Limited Warranty ("Gewährleistung")

- 11.1. The warranty ("Gewährleistung") for you as first buyer of the software located within the European Union (EU) is specified in Subsection 11.2 and the warranty for you as first buyer of the software located outside the EU is specified in Subsection 11.3 of this Agreement.
- 11.2. Limited Warranty within the EU: In the event that you as a first buyer of the software are located within the EU, the following limitation of liability shall apply.
 - 11.2.1. If Steinberg has sold the software directly to you as an end user, Steinberg warrants ("gewährleistet") that the software essentially executes the functions described in the enclosed documentation upon receipt, provided that the software is employed in accordance with the minimum requirements for the operating system and the computer hardware. Insignificant divergences from the functions described in the documentation do not give rise to any warranty claim. Other documents and statements are unremarkable for the composition of the product.
 - 11.2.2. If the user is consumer within the EU, the statutory warranty ("Gewährleistung") to defects of the product shall apply. If the user is a businessman, Steinberg provides warranty for defects of the product at its discretion by further fulfillment (improvement or substitute delivery) within one year. However, there exists no warranty for Trial Version Software.

11.3. Limited Warranty outside the EU: In the event that you as a first buyer of the software are located outside the EU, the following limitation of liability shall apply.

11.3.1.

Steinberg ensures ("gewährleistet") to the person who acquires first-time the license for the use of the software according to this Agreement, for the duration of ninety (90) days as of receipt of the software, that the software executes essentially the functions described in the enclosed documentation at receipt, provided that the software is employed according to the minimum requirements for the operating system and the computer hardware. Insignificant differences of the functions described in the documentation do not justify any warranty claim. Other documents and statements are insignificant in terms of the quality of the product.

11.3.2.

If the software does not essentially fulfill the functions described in the documentation, your only warranty claim against Steinberg and Steinberg's only obligation consists in an exchange of the software or a refund of the selling price at the discretion of Steinberg.

11.3.3.

Further warranty obligations according to the laws of your country remain unaffected. However, there exists no warranty for Trial Version Software.

12. Limitation of Liability

12.1. The limitation of liability for you as first buyer of the software located within the EU is specified in Subsection 12.2 and the limitation of liability for you as first buyer of the software located outside the EU is specified in Subsection 12.3 of this Agreement.

12.2. Limitation of Liability within the EU: In the event that you as a first buyer of the software are located within the EU, the following limitation of liability shall apply.

12.2.1.

Irrespective of the legal grounds Steinberg shall only be liable to compensate or replace futile expenses in accordance with the following stipulations.

12.2.2.

Steinberg shall be liable for damages caused by the intentional or grossly negligent conduct of Steinberg, its legal representatives, managerial employees or any other vicarious agents and damages arising from death, bodily damage and damage to health from the assumption of a guarantee or from a procurement risk as well as Steinberg's liability for damages pursuant to the Product Liability Act (Produkthaftungsgesetz). In the case of damage caused by the grossly negligent conduct of any other vicarious agents, the liability shall be limited to those damages which are typically to be expected within the scope of an agreement such as the present one. Any further liability under this Agreement shall be excluded.

12.2.3.

In the case of damage caused neither by intentional nor by the grossly negligent conduct of Steinberg, Steinberg shall only be liable where an obligation is violated, the fulfillment of which is of particular significance to the achievement of the contractual purpose (cardinal obligation). In this case, the restrictions of liability pursuant to the foregoing subsection 12.2.2 sentences 2 and 3 shall apply. In case of Trial Version Software, the liability for damages according to this subsection shall be excluded.

12.2.4.

The liability for loss of data shall be limited to the typical cost and effort of retrieving the data which would have occurred, if the data had been stored properly and in a risk-adequate manner.

12.2.5.

This limitation of liability for Steinberg shall also apply for the benefit of Steinberg's employees in the event that any claims are filed directly against them.

12.3. Limitation of Liability outside the EU: In the event that you as a first buyer of the software are located outside the EU, the following limitation of liability shall apply.

12.3.1.

Except for the aforementioned rights Steinberg or Steinberg's authorized distributors assume no liability for loss, damages, claims or costs of any type, direct or indirect damages including consequential damages arising from business interruptions, injuries to persons, or lack of due care or claims of third parties, even if a representative of Steinberg was informed about the possibility of such losses, damages, costs or claims. This limitation shall apply also in the event of a fundamental breach of this Agreement.

12.3.2.

The total liability of Steinberg and its distributors in the context of this Agreement shall be limited to the amount which was paid for the software, if any.

12.3.3.

The aforementioned restrictions shall not apply in countries where a limitation of liability is inadmissible.

13. Infringement

You should inform Steinberg promptly in writing if a third party raises any claim against your use of the software. Steinberg may defend you, if you reasonably support Steinberg.

14. Final Provisions

14.1. This Agreement constitutes the entire understanding of the subject matter between the parties. Subsidiary agreements have not been concluded.

14.2. Supplements and amendments of this Agreement must be made in writing; a waiver of the requirement of the written form must also be made in writing.

14.3. If any stipulation of this Agreement should be or become invalid, in whole or in part, this shall not affect the validity of the remaining stipulations. The invalid stipulation shall be deemed to be replaced by the parties with a valid regulation which comes as close as possible to the commercially desired purpose originally intended for the ineffective provision; the same shall apply in the case of a lacuna.

14.4. This Agreement shall be governed and construed by the laws of the Federal Republic of Germany and the UN Convention on the International Sale of Goods (CISG) shall not apply.

14.5. The exclusive place of jurisdiction with respect to all disputes based on or in connection with this Agreement shall be Hamburg. Steinberg can bring an action against you at your general place of jurisdiction.

Appendix

Specifications

Electrical Characteristics

Sample Rate	Internal	44.1kHz, 48kHz, 88.2kHz, 96kHz
	External	44.1kHz, 48kHz, 88.2kHz, 96kHz ($\pm 0.1\%$ respectively)
Total Harmonic Distortion	GAIN: Minimum	0.004% or less (1 kHz @ +18 dB, into 600 Ω)
Frequency Response (CH IN to LINE OUT)	fs = 48 kHz	20 Hz–20 kHz, +1, -3 dB @ +4 dB, into 600 Ω
	fs = 96 kHz	20 Hz–40 kHz, +1, -3 dB @ +4 dB, into 600 Ω
Dynamic Range (SN ratio at the maximum level)		104 dB, DA converter (LINE OUT)
		97 dB, AD + DA (to LINE OUT)
Hum & Noise (20 Hz–20 kHz) Rs = 150 Ω		-118 dB, Equivalent input noise
		-86 dB, Residual output noise, Output fader: Minimum
	GAIN: Maximum PAD: OFF	-86 dB (90 dB SN), LINE OUT
	GAIN: -60 dB PAD: OFF	-53 dB (57 dB SN), LINE OUT
Maximum Voltage Gain		84 dB, CH1 – 8 to LINE OUT
Crosstalk @ 1 kHz	GAIN: Minimum Adjacent Input	-85 dB, CH1 – 8

Input and Output Specifications

Analog Input	Type	Input Level		
		Nominal Level	Maximum Level	Input Impedance
MIC/LINE/Hi-Z jack 1, MIC/LINE jack 2 and MIC/LINE IN jacks 3 – 8 (CH1 – 8)	XLR type balanced, +48 V Phantom powered	-60 dBu to +10 dBu	+24 dBu	3.5 k Ω
INSERT I/O jack 1 and 2 (INSERT IN)	TRS phone type, unbalanced	0 dBu	+14 dBu	10 k Ω

Analog Input	Type	Output Level		
		Nominal Level	Maximum Level	Input Impedance
OUTPUT jacks 1 – 8 (Line Output)	TRS phone type, balanced	+4 dBu	+18 dBu	600 Ω
INSERT I/O jack 1 and 2 (INSERT OUT)	TRS phone type, unbalanced	+4 dBu	+18 dBu	10 k Ω
Headphone jacks 1 and 2 (Monitor 1/2)	TRS phone type, unbalanced	4 mW + 4 mW	25 mW + 25 mW	8 Ω
		12 mW + 12 mW	75 mW + 75 mW	40 Ω

General Specifications

Power Requirements	40W (PA-30)
Dimensions (H x D x W)	44 x 305 x 480 mm
Net Weight	3.2kg
Operating Free-air Temperature Range	+5 – +35
Included Accessories	AC power adaptor (PA-30 or equivalent)
	DVD-ROM (Cubase AI 4)
	CD-ROM (TOOLS for MR)
	Getting Started manual (printed booklet)
	IEEE1394 cable
	Rubber stoppers x 4

Functions

Input Channels 1 – 8	Analog Input	
	MIC Preamp	Discrete Class-A MIC preamp (Inverted Darlington Circuitry)
	[+48V] button (Phantom Power switch)	+48 V DC
	[PAD] button	0/26 dB
	Gain knob	44 dB variable (-60 dB to -16 dB)
	Phase	Normal/Reversed (controlled via a computer)
	High Pass Filter	OFF/80 Hz (-12 dB/oct.) Controlled via a computer
	[HI-Z] switch	On/off (for channel 1), Input impedance: 500 k Ω
	AD converter	24 bit linear, Enhanced dual-bit delta-sigma conversion
	[SIG/PEAK] lamp	-3dB or mode (red), -40dB – -3dB (green) (when the clipping point of the signal is assumed to be 0 dB)
Output Channels 1 – 8	Analog Output	
	Level Control	Multi Function Encoder knob control (for all the channels 1 – 8) Software control (for each of the channels 1 – 8)
	DA converter	24 bit linear, 128 times oversampling Advanced multi-bit delta/sigma conversion
Headphone jacks 1 and 2	Level Control	Multi Function Encoder knob control
	Maximum Output Level	25mW (@ 8 Ω)/75mW (@ 40 Ω)
IEEE1394 jack	Audio interface	16-ch input/16-ch output

European models

Purchaser/user Information specified in EN55103-1 and EN55103-2.

Inrush current: 2.0 A (MR816 CSX), 2.0 A (MR816 X)

Conforms to environments: E1, E2, E3, E4

MEMO

For details of products, please contact your nearest Steinberg representative or the authorized distributor listed below.

Pour plus de détails sur les produits, veuillez-vous adresser à Steinberg ou au distributeur le plus proche de vous figurant dans la liste suivante.

Die Einzelheiten zu Produkten sind bei Ihrer unten aufgeführten Niederlassung und bei Steinberg Vertragshändlern in den jeweiligen Bestimmungsländern erhältlich.

Para detalles sobre productos, contacte su tienda Steinberg más cercana o el distribuidor autorizado que se lista debajo.

NORTH AMERICA

CANADA

Yamaha Canada Music Ltd.
135 Milner Avenue, Scarborough, Ontario, M1S 3R1, Canada
Tel: 416-298-1311

U.S.A.

Steinberg North America, c/o Yamaha Corporation of America
6600 Orangethorpe Ave., Buena Park, Calif. 90620, U.S.A.
Tel: 714-522-9011

CENTRAL & SOUTH AMERICA

MEXICO

Yamaha de México S.A. de C.V.
Calz. Javier Rojo Gómez #1149, Col. Guadalupe del Moral C.P. 09300,
México, D.F., México
Tel: 55-5804-0600

BRAZIL

Yamaha Musical do Brasil Ltda.
Rua Joaquim Floriano, 913 - 4º andar, Itaim Bibi, CEP 04534-013 Sao
Paulo, SP. BRAZIL
Tel: 011-3704-1377

ARGENTINA

Yamaha Music Latin America, S.A. Sucursal de Argentina
Viamonte 1145 Piso2-B 1053, Buenos Aires, Argentina
Tel: 1-4371-7021

PANAMA AND OTHER LATIN AMERICAN COUNTRIES/ CARIBBEAN COUNTRIES

Yamaha Music Latin America, S.A.
Torre Banco General, Piso 7, Urbanización Marbella, Calle 47 y Aquilino
de la Guardia, Ciudad de Panamá, Panamá
Tel: +507-269-5311

EUROPE

Steinberg Media Technologies GmbH
Neuer Hoeltigbaum 22-32, 22143 Hamburg, Germany
Tel: +49-(0)40-210 35 0

AFRICA

**Yamaha Corporation,
Asia-Pacific Music Marketing Group**
Nakazawa-cho 10-1, Naka-ku, Hamamatsu, Japan 430-8650
Tel: +81-53-460-2312

MIDDLE EAST

Yamaha Music Gulf FZE
LOB 16-513, P.O.Box 17328, Jubel Ali, Dubai, United Arab Emirates
Tel: +971-4-881-5868

ASIA

THE PEOPLE'S REPUBLIC OF CHINA

Yamaha Music & Electronics (China) Co.,Ltd.
25/F., United Plaza, 1468 Nanjing Road (West), Jingan, Shanghai, China
Tel: 021-6247-2211

INDONESIA

PT. Yamaha Music Indonesia (Distributor) PT. Nusantik
Gedung Yamaha Music Center, Jalan Jend. Gatot Subroto Kav. 4, Jakarta
12930, Indonesia
Tel: 21-520-2577

KOREA

Yamaha Music Korea Ltd.
8F, 9F, Dongsung Bldg. 158-9 Samsung-Dong, Kangnam-Gu, Seoul,
Korea
Tel: 080-004-0022

MALAYSIA

Yamaha Music Malaysia, Sdn., Bhd.
Lot 8, Jalan Perbandaran, 47301 Kelana Jaya, Petaling Jaya, Selangor,
Malaysia
Tel: 3-78030900

SINGAPORE

Yamaha Music Asia Pte., Ltd.
#03-11 A-Z Building 140 Paya Lebor Road, Singapore 409015
Tel: 747-4374

TAIWAN

Yamaha KHS Music Co., Ltd.
3F, #6, Sec.2, Nan Jing E. Rd. Taipei.
Taiwan 104, R.O.C.
Tel: 02-2511-8688

THAILAND

Siam Music Yamaha Co., Ltd.
4, 6, 15 and 16th floor, Siam Motors Building, 891/1 Rama 1 Road,
Wangmai, Pathumwan, Bangkok 10330, Thailand
Tel: 02-215-2626

OTHER ASIAN COUNTRIES

Yamaha Corporation, Asia-Pacific Music Marketing Group
Nakazawa-cho 10-1, Naka-ku, Hamamatsu, Japan 430-8650
Tel: +81-53-460-2317

OCEANIA

AUSTRALIA

Yamaha Music Australia Pty. Ltd.
Level 1, 99 Queensbridge Street, Southbank, Victoria 3006, Australia
Tel: 3-9693-5111

NEW ZEALAND

Music Works LTD
P.O.BOX 6246 Wellesley, Auckland 4680, New Zealand
Tel: 9-634-0099

COUNTRIES AND TRUST TERRITORIES IN PACIFIC OCEAN

Yamaha Corporation, Asia-Pacific Music Marketing Group
Nakazawa-cho 10-1, Naka-ku, Hamamatsu, Japan 430-8650
Tel: +81-53-460-2312

HEAD OFFICE Steinberg Media Technologies GmbH
Neuer Hoeltigbaum 22-32, 22143 Hamburg, Germany
Tel: +49-(0)40-210 35 0



Steinberg Web Site
<http://www.steinberg.net>

U.R.G., Pro Audio & Digital Musical Instrument Division, Yamaha Corporation
© 2008 Yamaha Corporation