



Eee Note



Quick Start Guide

Package contents



Eee Note and Wacom pen



Quick Start Guide



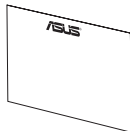
micro-USB cable



USB charger



Book case

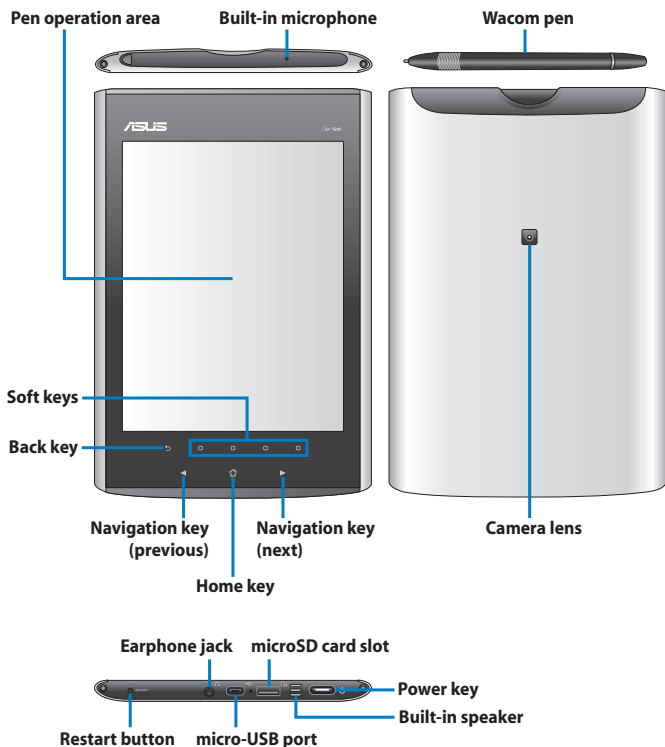


Warranty card



If any of the items is damaged or missing, contact your retailer.

Getting to know your device



Ensure that you do not accidentally drop the Wacom pen to avoid damaging it.

Turning your device ON/OFF

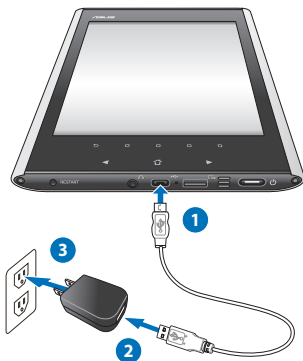
- Long press the Power key for about three seconds to turn on your device.
- Long press the Power key for about three seconds to shut down your device.



Charging your device

To charge your device:

1. Connect the USB cable's micro-USB connector to the micro-USB port of your device.
2. Connect the micro-USB cable to the USB charger.
3. Connect the USB charger to a power outlet (100V–240V).



- You may also connect the micro-USB cable to your computer's USB port to charge your device.
- Use only the USB charger that comes with your device. Using a different USB charger may damage your device.
- Your device allows you to read e-books or add/edit notes for thirteen hours after fully charging it.

The Home screen



Use the Wacom pen to tap the status bar, search bar, application menu, or the command bar. Use your finger to press the touchpad keys.

- **Status bar:** Tap the icons to proceed with the corresponding settings of your device or display the status of your device.
- **Search bar:** Tap to search for the documents in your device.
- **Application menu:** Tap an application to launch it.
- **Command bar:** Tap a command button to perform its corresponding function.

Getting connected wirelessly

Use your device's built-in Wi-Fi capability to connect to a wireless network. This enables you to wirelessly access websites or Internet-related applications.

To use the Wi-Fi function:


1. From the home screen, tap **Setting** > **Wi-Fi networks** > **Set up**.
2. The device searches for available networks.
3. From the list of networks, tap the network that you want to connect to.
4. If required, key in the password or passkey, then click **Try**.

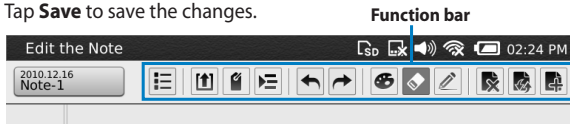



Tap the password field to display the virtual keyboard. Use the virtual keyboard to key in the network's password.

Adding/Editing notes

To add/edit a note:

1. From the home screen, tap **Notes**.
2. Do any of the following:
 - Tap **Add new note** to create a new note.
 - Tap an existing note to edit it, or tap  to manage an existing note.
3. Tap an icon in the function bar to use its corresponding function.
4. Tap **Save** to save the changes.



- If your device is connected to the Internet, tap  > **Add to Evernote** to upload your notes to the Evernote website.
- Before uploading your notes to the Evernote website, obtain a free Evernote ID at <http://www.evernote.com>, and then go to **Setting** > **Service accounts** > **Set up** to set up the Evernote account in your device.

Accessing e-books


Tap **Reader** to access your e-book collection in PDF or ePub formats.



- Some e-books or digital publications that you have purchased or downloaded online may contain Digital Rights Management (DRM) protection. You need to activate your digital reader using an Adobe ID to access DRM-protected files.
- Get a free Adobe ID at <https://www.adobe.com/cfusion/membership/>. To set up your Adobe account in your device, tap **Setting** > **Service accounts** > **Set up**.
- To use your device to buy e-books, tap **Reader** > **Buy more books**. You might need to have an account for the bookstore where you want to buy e-books.

To read an e-book:

1. From the home screen, tap **Reader**.
2. Press the ◀/▶ keys to navigate through the book list, and press the Enter key to open the selected e-book.

Tap the Wacom pen on your selected e-book to open it. Tap  to manage an e-book.

3. When reading an e-book, do any of the following:
 - Press the ◀/▶ keys to go to the next page or go back to the previous page.
 - Use the Wacom pen to draw or write notes on pages.
 - Tap an icon in the function bar to use its corresponding function.



Using Eee Note Sync

Eee Note Sync helps you to easily manage Eee Note contents, backup and restore your important data, and upgrade and maintain your system.

To install Eee Note Sync utility on your computer:

1. Turn on your device.
2. Using the micro-USB cable, connect your device to your computer's USB port.
3. Tap **Eee Note Sync and Wacom Pen Tablet driver** on your device.
4. The **AutoPlay** screen appears on your computer. Click **Run setup.exe** to start installing Eee Note Sync utility to your computer. Follow the onscreen instructions to complete the installation.



- If the AutoPlay screen does not appear on your computer, go to **Computer**, and then double-click **Eee Note Sync Installer** to start the installation.
- We recommend that you also install **PDFCreator** and **Wacom Pen Tablet Driver** during the Eee Note Sync installation. PDFCreator converts Microsoft Office Word, PowerPoint, and Excel files to PDF files automatically so that you can open these files in your Eee Note. Installing the Wacom Pen Tablet Driver allows you to use your Eee Note as a digitizer.

To copy files to or from your device:

1. Ensure that Eee Note Sync utility is installed to your computer. Using the micro-USB cable, connect your device to your computer.
2. Tap **Eee Note Sync Mode** on your device.
3. The **Eee Note Sync** main screen appears on your computer. If the screen does not appear on your computer, double-click the Eee Note Sync icon on your computer's desktop to open the utility.
4. From the Eee Note Sync utility, click **Content Management**.



You may click **Backup and Restore** to use the backup and restore function of Eee Note Sync.


5. To copy the files to your preferred destination path, do any of the following:
 - Click **Import** to copy the files from your computer to your device.
 - Click **Export to PC** to copy the files from your device to your computer.
 - Click **Move to SD Card** to copy the files from your device to your SD card.



Your device supports the following file formats: ePub, PDF, MP3, JPG, BMP, GIF, and PNG. The txt, doc, docx, xls, xlsx, ppt, and pptx files are supported if the PDFCreator is installed to your computer and these files are imported from the Eee Note Sync utility.

Troubleshooting

Q. The device does not respond or hangs for a long time.

- Long press the Home key () to force quit the running application.
- If that doesn't work, use the Wacom pen to press the Restart button to restart your device.

Where to find more information

1. User manual in your Eee Note

For the detailed user manual and related information, refer to the user manual in **Reader** category of your Eee Note.

2. ASUS Support site

Download the latest firmwares, drivers, and utilities from the ASUS Support site at <http://support.asus.com/>.