

Read all instructions BEFORE assembly and USE of product. **KEEP INSTRUCTIONS FOR FUTURE REFERENCE.** Record the following information for quick reference. Note: Illustrations are only representative and not actual.

Attach copy of sales receipt.

Date Purchased: _____ Model Number: _____ - _____ Color _____
Located under the seat cushion on the seating surface.

Parts List

Make sure you have all the parts listed below before using your high chair. If any parts are missing, call Consumer Affairs at 1-800-992-6624.



Seat Back



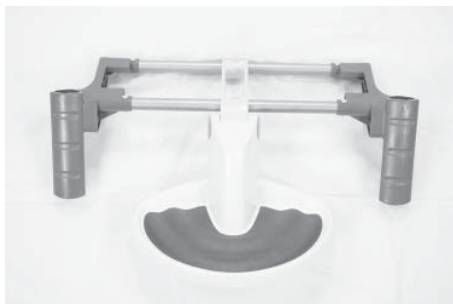
Seat Base



Upper Legs
(x2)



Stabilizer Bar
Assembly (x2)



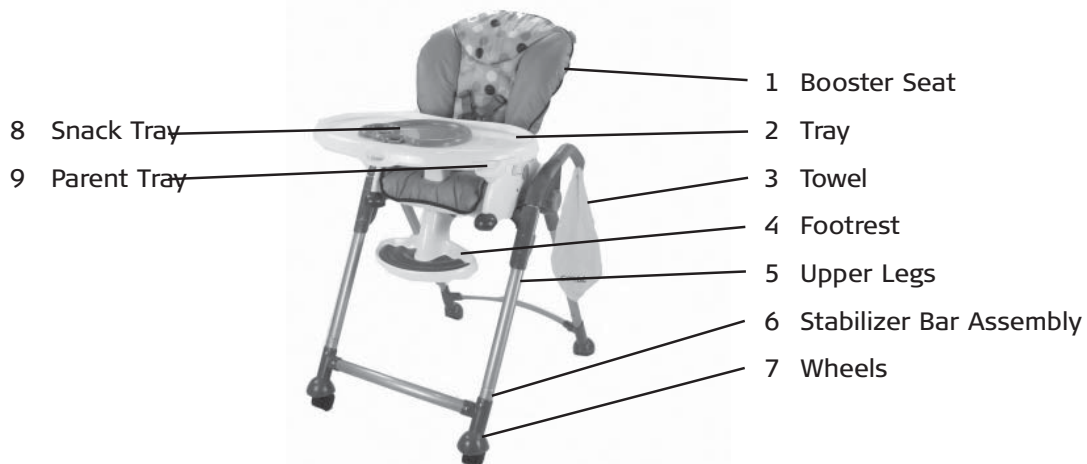
Frame



Tray



Towel



**⚠️ WARNING: FAILURE TO FOLLOW THESE INSTRUCTIONS AND WARNINGS
COULD RESULT IN SERIOUS INJURY OR DEATH.**

Adult assembly required. Please follow assembly instructions carefully. Check this product for damaged hardware, loose joints, missing parts, or sharp edges before assembly and periodically during use. Ensure all parts are securely locked in place before use. **DO NOT** use if any parts are missing, damaged or broken. Contact Combi at 1-800-992-6624 for replacement parts and instructions if needed. Never substitute parts.

⚠️ The child should be secured in the high chair at all times by the restraining system, either in the reclining or upright position. The tray is not designed to hold the child in the chair. It is recommended that the high chair be used in the upright position only by children capable of sitting upright unassisted.

⚠️ Prevent serious injury or death from falls or sliding out. Always secure child in restraint system.

⚠️ Adjust the 5-point harness according to the size of your child. Adjust for every recline position.

⚠️ Do not adjust the height while occupied.

⚠️ Never leave child unattended. Always keep your child in view.

⚠️ Never lift or carry, high chair, booster or toddler chair while occupied.

⚠️ STRANGULATION HAZARD: Do not place product in any location where there are cords, such as window blind cords, phone cords, etc.

⚠️ Do not force tray against child. Use only the three adjustment positions. Always ensure both sides of tray are locked in place.

⚠️ Until child is able to get in and out of the booster seat without help (about 2 ½ years old), the child should be secured in the booster seat at all times by the restraining system. The tray is not designed to hold the child in the chair.

⚠️ Prevent serious injury or death. Do not use in motor vehicles.

⚠️ It is recommended that the booster seat be used in the upright position only by children capable of sitting upright unassisted.

⚠️ Ensure all booster seat straps are stowed and away from seat base attachment area. Carefully check that the booster seat is attached properly to the seat base. Placing a child in the booster seat with seat base that is not properly attached could possibly cause serious injury.

High Chair: Designed for use by children up to 3 years of age. Total maximum weight of child **MUST** not exceed 40 lbs. (18 kg).

Booster: Total maximum weight of child **MUST** not exceed 50 lbs. (23 kg).

Toddler Chair: Total maximum weight of child **MUST** not exceed 40 lbs. (18 kg).

Parent Tray: Total maximum weight capacity **MUST** not exceed 1 lb. (0.5 kg).

Assembly of High Chair

1. Place the seat base upright on the floor. Insert the upper legs into the seat base as shown in figure 1a and 1b. Note the folding buttons face outward on the upper legs.
2. Press in the height adjustment levers on the seat base and slide it to the top position on the upper legs as shown in figure 2.



figure 1a



figure 1b



figure 2

3. Attach the stabilizer bar assembly to the upper legs by holding down the release/locking pins, slide the stabilizer bar assembly onto the upper legs until the release/locking pins snap into place as shown in figure 3a and 3b. (Note: The stabilizer bar assembly will only fit into the upper legs one way.) The stabilizer bar assembly, with the wheels, attaches at the front of the high chair.



figure 3a



figure 3b



figure 4a

4. Align the seat back to the seat base as shown in figure 4a. Press the sides of the seat back in slightly so the seat back will lock into the slots on the seat base as shown in figure 4b.



figure 4b

5. Pull the seat back up while pulling up on the release lever until the seat back locks into one of the recline positions as shown in figures 5a-c.



figure 5a



figure 5b

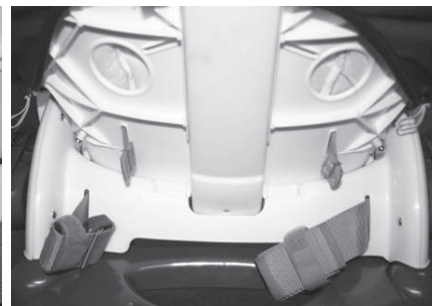


figure 5c

Attaching the Booster Seat

1. Align the Booster Seat with the frame as shown in figure 6a. Press the Booster Seat down until it snaps into place. Lift up on the Booster Seat to ensure it is securely locked into place as shown in figure 6b.

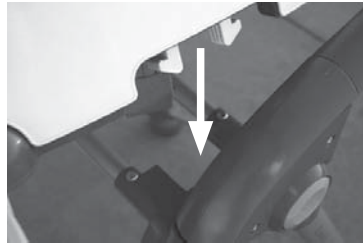


figure 6a



figure 6b

⚠ WARNING Ensure that all Booster seat straps are stowed and away from seat base attachment area. Carefully check that the Booster seat is attached properly to the seat base. Placing a child in the Booster seat with seat base that is not properly attached could possibly cause serious injury.

Removing the Booster Seat

1. Press the Booster Seat downwards and then pull up on the release levers and lift the Booster Seat up off the seat base as shown in figure 7.

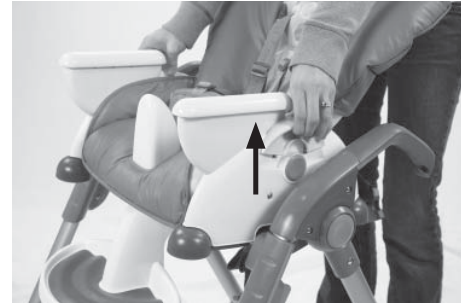


figure 7

Attaching, Adjusting and Removing the Tray, Snack Tray and Parent Tray

Attaching the Tray:

1. Align the tray to the grooves of the armrest and slide the tray onto the chair while pulling the release lever underneath the tray as shown in figure 8a.
2. The Snack Tray is placed over the grooves in the Tray as shown in figure 8b.

Adjusting the Tray:

1. While pulling the release lever, slide the tray to one of the three slots and release the lever. Gently pull and push on the tray to ensure that it is locked into the desired position.

Using the Parent Tray:

1. Pull out the Parent Tray from the side of the Tray as shown in figure 8c.

Removing the Tray:

1. Pull the release lever underneath the tray and slide off the seat.



figure 8a



figure 8b



figure 8c

Adjusting the Recline of the High Chair

1. Pull up on the release lever on the back of the chair and change the position of the backrest as shown in figure 9. Ensure that the backrest is locked in position by gently pulling on the backrest.

⚠ WARNING Adjusting the backrest too far forward will cause the seat back to become detached from the seat base.

Adjusting the Height of the High Chair

1. To adjust seat height, pull up left and right height adjustment levers while moving seat up or down as shown in figure 10.
2. Release the height adjustment levers once desired height is achieved.
3. Ensure left and right height adjustments are in matching positions and seat is locked in position before use.
4. Press down on seating area to verify seat is secure.

⚠ WARNING Do not adjust the height with your child in the high chair.

Folding the High Chair

1. Press the folding buttons on both sides of high chair while lifting the chair slightly to release the legs as shown in figure 11.

Attaching the Towel

1. Attach the towel by slipping the hole in the towel around the notch in the high chair hand grip as shown in figure 11b.

Applying and Releasing Wheel Brake

To **lock wheels**, lower the brake lever. (Down position.)

To **unlock wheels**, lift the brake lever. (Up position.)

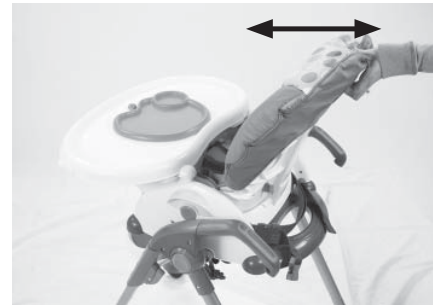


figure 9



figure 10



figure 11



figure 11b

Adjusting the Booster Seat Height

Raising the Height

1. Press in the height adjustment button on one side of the Booster Seat and pull the leg down to the desired position as shown in figure 12.
2. Release the button and ensure the Booster Seat leg is locked into position.
3. Repeat this process for the other side.



figure 12

Lowering the Height

1. Press in the height adjustment buttons on each side and push the Booster Seat down as shown in figure 12a.



figure 12a

Attaching the Booster Seat to a Chair

1. Undo the hook and loop fasteners on the straps underneath and behind the Booster Seat.
2. Place the Booster Seat on the chair. Be sure that the chair is wide enough to accommodate the Booster Seat. Make sure the legs of the Booster seat fit properly on the chair and don't hang off the sides of the chair.
3. Route the straps underneath the chair's seat and fasten the straps together as shown in figure 14.
4. Pull the strap tight to ensure the Booster seat is secured to the chair's seat as shown in figure 15.
5. Route the straps around the chair's backrest and fasten the straps together as shown in figure 16.
6. Pull the strap tight to ensure the Booster seat is secured to the chair's seat just like in figure 15.
7. Lift Booster gently to ensure proper attachment.



figure 13



figure 14



figure 15



figure 16

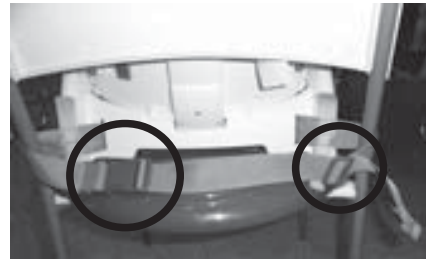
Attaching the Booster Seat to a Chair (cont.)

⚠ WARNING: STRANGULATION HAZARD

Make sure the adjuster bracket is close to the buckle as shown below.



Correct



Incorrect

Storing the safety straps

1. Roll up each individual strap and secure the hook and loop fastener straps around bundle as shown in figure 17.
2. The straps should look like figure 18 & 19 when rolled up and stored.



figure 17



figure 18

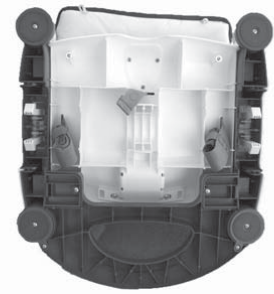


figure 19

⚠ WARNING: STRANGULATION HAZARD

Straps must always be stored when not in use.

Using the Booster as a Toddler Chair

1. Place the seat on the floor with the adjustable legs retracted as shown in figure 20.



figure 20

⚠ WARNING Never use on an elevated surface.

⚠ WARNING Toddler Chair must always be used with the legs in the lowest position. Adjustable legs cannot be extended while in this mode.

Routine Maintenance

STORE IN A COOL AND DRY AREA, especially in the summer. Do not store the high chair in the trunk of a vehicle.

FRAME

To clean the Frame, wipe with a damp cloth then wipe out any traces of moisture with a dry cloth. Excessive exposure to the sun could cause premature color fading of frame and fabric..

SEAT CUSHION

Machine wash on gentle cycle in cold water using a mild detergent. Do not use bleach. Line dry. If the seat cushion is frayed or unraveling, discontinue use and call Consumer Affairs for further instruction.

WHEELS

After prolonged normal use, the wheels of your high chair may not swivel as easily as when it was new. This is usually due to a buildup of dirt in the swivel mechanism. Before adding lubrication, test the swivel action to determine whether lubrication is necessary. Using compressed air* blow dirt from the mechanisms. Do not use soap and water to wash wheels.

ADDING LUBRICANT

Avoid lubricating the wheels whenever possible. Excessive lubrication or adding lubricant to wheels when new may cause them to develop a shimmy or wobble that may quicken their deterioration. Add lubricant (silicone*) to the shaft in small amounts.

Excessive exposure to the sun could cause premature color fading of plastic and fabric.

LIMITED WARRANTY

1. **Combi Juvenile Products, when purchased from an authorized retailer; are warranted to be free from defects in materials and workmanship for a period of one (1) year from date of purchase. Warranty is valid on products purchased and used in the U.S. only, and used in compliance with the warrantor's use and maintenance instructions. Save your carton and receipt. These items may be required in case of return for warranty service.**
2. **During the warranty period your Combi product will either be repaired or replaced, at the warrantor's discretion, without charge for replacement parts if it is purchased from an authorized Combi dealer and is found to be defective in workmanship or materials. For service, call 1-803-548-6633. The consumer will be responsible for all shipping and handling.**
3. **This limited warranty shall not apply to normal wear to the product, or if the product has been:**
 - a. **Damaged due to accidents, misuse, abuse or neglect as determined by Combi.**
 - b. **Tampered with or repaired by other than an authorized Combi repair center or with parts other than Combi approved parts.**
 - c. **Leased or rented for commercial use.**

THE WARRANTY PROVIDED HEREIN IS EXCLUSIVE AND IS IN LIEU OF ALL OTHER EXPRESS WARRANTIES. ANY IMPLIED WARRANTIES, INCLUDING ANY IMPLIED WARRANTY OF MERCHANTABILITY OR FITNESS FOR A PARTICULAR PURPOSE, ARE EXPRESSLY EXCLUDED. WARRANTOR'S OBLIGATIONS AND THE CONSUMER'S OR OTHER BUYER'S REMEDIES UNDER THE LIMITED WARRANTY ABOVE ARE EXCLUSIVE AND ARE STRICTLY LIMITED TO REPAIR OR REPLACEMENT AS STATED. ANY INCIDENTAL OR CONSEQUENTIAL DAMAGES ON THE PART OF THE WARRANTOR AND ANY SUPPLIER OR DEALER ARE HEREBY ALSO EXPRESSLY EXCLUDED.

Some states limit or do not allow exclusions or limitations on how long an implied warranty lasts, so the above limitation may not apply to you. Some states do not allow the exclusion or limitation of incidental or consequential damages, so the above limitation or exclusion may not apply to you. This warranty gives you specific legal rights, and you may also have other rights which vary from state to state.

