
Managing the Battery

Installing the Battery

Your iPAQ Pocket PC is shipped with the rechargeable battery partially charged. It is recommended that you fully charge the Pocket PC battery **before** setting up the unit, and recharge regularly. Your Pocket PC uses some power to maintain files in RAM and the clock. While working at your desk, keep the Pocket PC and Charger Adapter connected through the desktop cradle. When you travel, it is recommended that you carry the AC Adapter, Charger Adapter plug, or an optional spare battery with you.



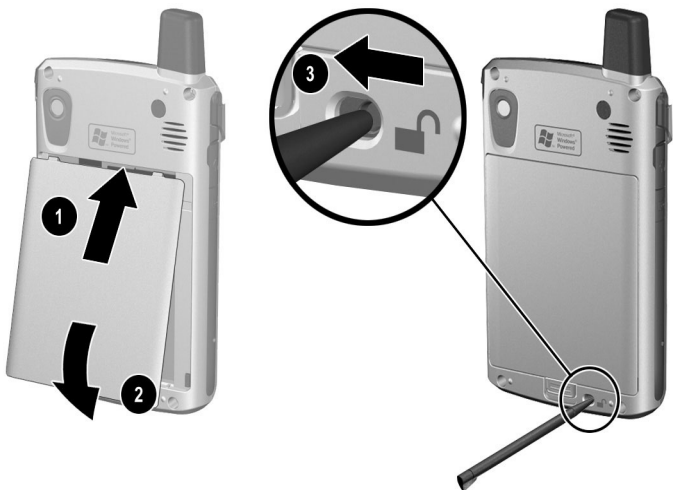
CAUTION: Use only an HP approved battery for your iPAQ Pocket PC. Inserting a battery that does not comply with HP requirements may cause the Pocket PC to malfunction.

The iPAQ Pocket PC also has a small internal backup battery that allows you to change the main battery without losing RAM data (user-installed programs and data) as long as it is replaced immediately.

Installing the Battery

To install the removable/rechargeable battery in the HP iPAQ Pocket PC h6300 Series:

1. Insert the two tabs **1** on the top of the battery into the latches in the top of the battery compartment on the back of the Pocket PC.
2. Snap the bottom of the battery into place **2**.



3. Insert the stylus into the battery lock **3** and slide it to the left or locked position.



CAUTION: The cover must be tightly latched in place and the **battery lock must be locked** for the Pocket PC to operate.

NOTE: If the battery is not fully charged, you must connect the AC Adapter to the Pocket PC to fully charge it before continuing. It takes up to four hours to fully charge a completely drained battery.

Removing the Battery

NOTE: Before removing the battery, use ActiveSync to back up data on your Pocket PC. If you need to clear the memory during the removal process, you will be able to restore the data.

To remove the battery from the iPAQ Pocket PC h6300 Series:

1. Insert the stylus into the battery lock ❶ and slide it to the right or unlocked position.
2. Slide the battery latch down ❷ to release the battery.
3. Remove the battery ❸.





CAUTION: Because most of the applications and data you install on your Pocket PC are held in memory (RAM), you will need to reinstall them if the battery completely discharges or if the battery is removed from the unit for more than 15 minutes. Otherwise, when fully charged, the internal backup battery will save the user installed data for up to 15 minutes when the standard battery is removed. Before removing the battery, check to see that the internal backup battery is fully charged by tapping **Start > Settings > System** tab > **Power** icon.

You do not need to reinstall applications and data installed in the iPAQ File Store folder because they are saved in nonvolatile memory.

Charging the Battery

Battery Saving Tip: Leave your Pocket PC connected to AC power at all times when you're not using it.

Battery Saving Tip: You can program an Application Button to turn off the screen when an MP3 is playing, saving battery power used to run the screen. Tap **Start > Windows Media > Tools > Settings > Buttons**. From the **Select Function** drop down list, tap **Screen Toggle**. Press either the Calendar or Inbox application buttons on the front of your iPAQ Pocket PC, then tap **OK**.

Charging with the AC Adapter

The standard AC Adapter works in any household outlet. You can also charge your Pocket PC in your automobile with an automobile adapter that works in your vehicle's electrical cigarette lighter or a 12-volt power outlet.

To purchase a car adapter, refer to the HP Web site at: www.hp.com/products/pocketpc .



CAUTION: Use only HP recommended AC adapters.

To charge the iPAQ Pocket PC using the AC Adapter:

1. Plug the AC Adapter into an electrical outlet ❶.
2. Insert the AC Adapter plug into the charging adapter ❷.
3. Insert the charging adapter into the bottom of the Pocket PC ❸.



CAUTION: To avoid damaging your Pocket PC or the AC Adapter, check to be sure all connectors are properly aligned before connecting them.



4. When the Power button indicator on the top of the Pocket PC turns solid amber, the unit is fully charged and you can disconnect the AC Adapter. The approximate time to fully charge a drained battery is four hours.

NOTE: A standard battery can be charged in about four hours, an extended battery takes longer.

Charging with the Desktop Cradle and AC Adapter

Use the Desktop Cradle to charge the HP iPAQ Pocket PC.

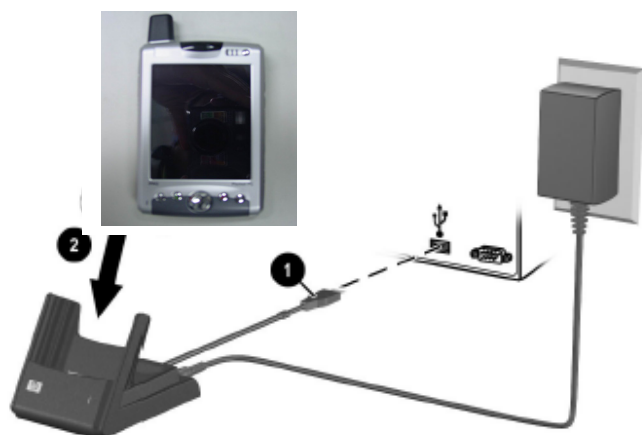
NOTE: It is not necessary to synchronize your Pocket PC before charging it.

To charge the Pocket PC using the desktop cradle:

1. Plug the AC Adapter into an electrical outlet **1** and connect the other end of the AC Adapter to the AC connector on the desktop cradle **2**.
2. Slide the bottom of your Pocket PC into the cradle **3** and push firmly to seat it.



CAUTION: To avoid damaging your Pocket PC or the cradle, check to be sure the Pocket PC and cradle connectors are properly aligned before pushing the Pocket PC into the cradle.



NOTE: The amber charge light on the Power button blinks while the battery is recharging and turns solid amber (nonblinking) when the battery is fully charged.

Charging a Spare Battery

Battery Saving Tip: To ensure you always have battery power available, invest in an extra Standard Battery or Extended Battery. These batteries can be charged in the desktop cradle. To purchase an extra battery, refer to the HP Web site at www.hp.com/products/pocketpc.

To charge an extra battery in the desktop cradle:

1. Plug the AC Adapter into an electrical outlet and connect the other end of the AC Adapter to the AC connector on the desktop cradle.
2. Insert the battery into the battery compartment **1** with the connectors on the top of the battery lined up with the connectors inside the battery compartment, and push in to seat it.
3. When the battery light on the front of the desktop cradle **2** is amber, the battery is charging. When the light is green, the battery is completely charged and ready to use.



CHARGING TIP: When charging two batteries simultaneously, turn off/suspend your Pocket PC by pressing the Power button once. This allows two drained extended batteries to be charged within eight hours.

Charging with the Optional USB Autosync Cable

You can charge your iPAQ Pocket PC using the optional USB Autosync Cable. Connect the Autosync Cable to the Pocket PC and your personal computer. The Pocket PC will be charged using power from the personal computer.

For more information on charging your Pocket PC using the optional USB Autosync Cable, from the **Today** screen, tap **Start > Settings > System** tab > **Power > USB Charging** tab, and select **Use USB Charging**.

NOTE: USB charging is slower and provides less power when compared to charging with the AC adapter. The USB Slow Charge option can often deliver less power than is being consumed by the Pocket PC resulting in the battery gradually losing capacity instead of gaining it. If this happens, the charging LED does not blink. To ensure the battery is being charged, turn off/suspend your Pocket PC by pressing the power button once during slow USB charging. Because of this, the USB Fast Charge option is recommended over the Slow Charge option.

Changing the Backlight Settings

To change the backlight settings in order to conserve more battery power:

1. From the **Start** menu, tap **Settings > System** tab > **Backlight**.
2. Select the following backlight settings:
 - Brightness
 - Battery Power
 - External Power

Battery Saving Tip: Set the backlight to go off quickly after you stop using your Pocket PC, or move the slide bar to **Power Save** mode to turn off the backlight completely. You can also set the backlight to turn on when a button is pressed or when the screen is tapped, or you can turn the backlight back on (or off) by pressing and holding the **Power** button for three seconds.

Changing the Wireless LAN Power Saving Modes

To change Wireless LAN (WLAN) power saving modes:

1. From the **Start** menu, tap **Settings > System** tab > **Power > Control** tab.
2. For WLAN Power Save mode, select:
 - **OFF**—No WLAN Power Save. Use only if the absolute highest WLAN throughput is required.
 - **Auto**—Automatically switches between Power Save and no power save.
 - **Extended**—Uses the least battery power while maintaining a WLAN connection. This mode significantly reduces the WLAN data throughput. It is not recommended for large file transfers.

Disabling the Application Buttons

Pressing the Contacts or Calendar Application Buttons on the front of your Pocket PC will turn your device on by default.

Battery Saving Tip: To reduce incidence of accidentally powering on the Pocket PC, you may choose to disable the Application and Record Buttons Auto Power On feature.

To disable the Auto Power On function of the Application Buttons or the Record Button:

1. Tap **Start > Settings > Buttons > Lock** tab.
2. Tap in the **Disable the application buttons** checkbox AND/OR tap in the **Disable the record button** checkbox.

3. Tap **OK**.

Note: If you disable the Auto Power On feature for the Application Buttons, the Power Button still turns the unit on. Once the unit is turned on, all buttons will function according to their programmed functions.

Manually Monitoring the Battery

To manually monitor the battery power:

1. From the **Start** menu, tap **Settings** > **System** tab > **Power** icon.
2. Tap **OK**.

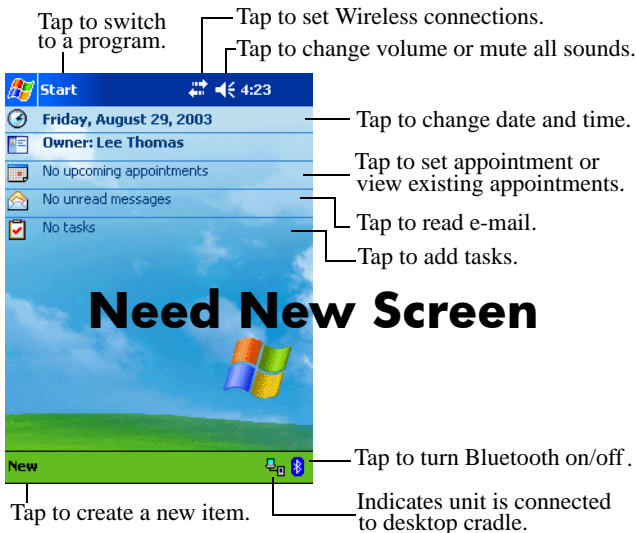
Battery Saving Tip: Tap **Start** > **Settings** > **System** tab > **Power** > **Control** tab, then tap the **On battery power** checkbox and set it to turn your Pocket PC off after a short time of not being used.

Learning the Basics

Using the Today Screen

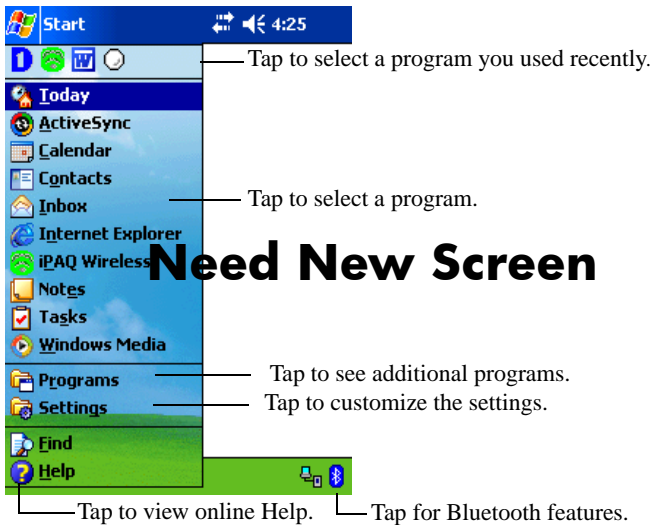
When you first turn on your Pocket PC, the **Today** screen displays. You can also display it by tapping **Start**, and **Today**. Use the **Today** screen to view:

- Date and time
- Owner information
- Upcoming appointments
- Unread and unsent messages
- Tasks that need to be completed

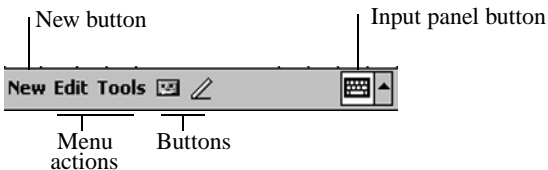


Navigation Bar and Command Bar

The Navigation bar is located at the top of the screen. It displays the active program and current time, and allows you to close screens. Use the **Start** menu to select a program.














Within each program, use the Command bar located at the bottom of the screen to perform tasks. Tap **New** to create a new item in the current program.



Status Icons

You may see the following status icons displayed on the Navigation or Command bar. Tap the icon on the screen to view more information related to the item.

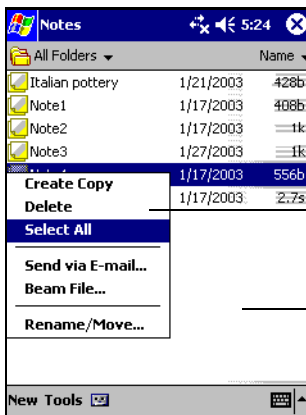
	Active connection to computer or wireless network.
	Inactive connection to computer or wireless network.
	Microsoft ActiveSync is synchronizing.
	Speaker is on.
	Speaker is off or in mute position.
	Phone is powered on.
	Phone is powered off.
	Establishing a Wireless connection.
	Active Wireless connection showing the signal strength.
	Battery power is low.
	Battery power is very low.

	Icon room
<hr/>	
	E-mail received.
<hr/>	
	Instant messages received.
<hr/>	
	iPAQ Pocket PC is connected with the desktop cradle. This icon appears only when there is an active connection.
<hr/>	
	Bluetooth power-on/off icon. When the Bluetooth icon is blue, Bluetooth is active. When the Bluetooth icon is grayed with a red X, Bluetooth is inactive.

Pop-Up Menus

Pop-up menus allow you to quickly perform an action. Use the pop-up menu to cut, copy, rename, and delete an item, also send an e-mail or send a file to another device.

To access a pop-up menu, **tap and hold** the stylus on the item on which you want to perform the action. When the menu appears, tap the desired action, or tap anywhere outside the menu to close it without performing an action.



Tap and hold to display the pop-up menu.


Tap the action you want.

Tap outside the menu to close it without performing an action.

Creating information


From the **Today** screen, you can create new information, including:

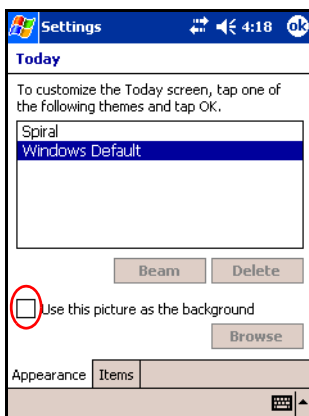
- Appointments
- Contacts
- Messages
- Pocket Excel Spreadsheets
- Notes
- Tasks
- Word documents

1. Tap , or from the **Start** menu, tap **Today** > **New**.
2. Tap an option to create a new item.
3. Tap **OK** after you finish creating a new item.

Customizing the Today Screen

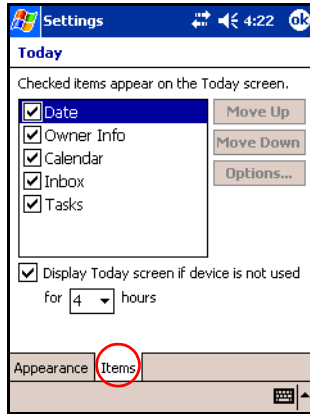
From the **Settings Today** screen, you can:

- Add a picture as the background.
 - Select the information you see.
 - Set the order of the information.
 - Set when to see the **Today** screen.
1. Tap , or from the **Start** menu, tap **Settings > Today**.
 2. Select **Use this picture as the background** checkbox.



3. Tap **Browse** to select a picture from File Explorer.

4. Tap the **Items** tab to select or reorder the information on the **Today** screen.



5. Tap an item to highlight it.
6. Tap **Move Up** or **Move Down** to change the order of items on the **Today** screen.

NOTE: You cannot change the placement of the **Date** on the **Today** screen.

7. Tap the down arrow associated with **Display Today screen if device is not used for...hours** checkbox to determine how many hours must pass before the **Today** screen displays.
8. Tap **OK**.

Using Applications

Opening Applications

Open any application on your Pocket PC from the **Start** menu.

NOTE: You can also open an application by assigning it to one of the two available Application Buttons. The Phone Application Buttons **cannot be reassigned**. To assign Application Buttons, from the **Today** screen, tap **Start > Settings > Buttons**.

To open an application:

1. Tap **Start > Programs**.
2. Tap the desired application title or logo.

Minimizing Applications

To minimize an open application, tap the **x** at the top right of the screen.

Closing Applications

Applications automatically close based on available memory. However, if your Pocket PC is running slowly, you can close applications by manually closing them.

Closing Manually

1. From the **Start** menu, tap **Settings** > **System** tab > **Memory** > **Running Programs** tab.
2. Tap **Stop All** or select a particular application, then tap **Stop**.

NOTE: To bring a currently running program to the foreground, tap **Activate**.

Installing Applications

Install applications on your Pocket PC from your:

- Computer by using Microsoft ActiveSync.
- Pocket PC if the application file has a .cab extension.
- Pocket PC or your computer by copying an application file that has an .exe or .cef extension.

When installing applications, look for the correct version for your HP iPAQ h6300 model or Microsoft Windows Mobile™ 2003 Software for Pocket PC Edition.

- Follow the instructions provided with the application and by the Installation Wizard to install applications from your computer.
- Tap the application file in File Explorer on your Pocket PC and follow the instructions on the Installation Wizard to install applications on your Pocket PC.

Backing Up Information

Use iPAQ Backup or Microsoft ActiveSync Backup to back up and restore information on your Pocket PC.

NOTE: iPAQ Backup is already installed on the Pocket PC. You must install ActiveSync on your computer before using ActiveSync Backup.

To help reduce the chance of losing information, you should back up information on a regular schedule.


Backup/Restore using iPAQ Backup

iPAQ Backup saves your data in a backup file. You may designate a file name and a location for the file to be saved. iPAQ Backup backs up to a memory card, main memory, or the iPAQ File Store folder. Close all programs on your Pocket PC before backing up or restoring your information.



CAUTION: Restoring your information replaces the current information on your Pocket PC with the information saved in your backup.

To backup/restore using iPAQ Backup:

1. Tap , or from the **Start** menu, tap **Programs > iPAQ Backup**.
2. Tap the **Backup** tab or the **Restore** tab.
3. Select the files and folders to be backed up or restored.
4. Select file location for backed-up data.
5. Set backup or restore options.
6. Press the **Backup** or **Restore** button, and press the **Start** button on the next screen.

Backup/Restore Using ActiveSync

Close all programs on your Pocket PC before backing up or restoring your information.



CAUTION: Restoring your information replaces the current information on your Pocket PC with the information saved in your backup.

To backup/restore using ActiveSync:

1. Be sure the Pocket PC is connected to your computer.
2. From your computer, open Microsoft ActiveSync. From the **Start** menu, click **Programs > Microsoft ActiveSync**.
3. From the **Tools** menu, click **Backup/Restore**.
4. Click the **Backup** or **Restore** tab, and select your options.
5. Click **Backup Now** or **Restore Now**.

Using iPAQ File Store Folder

You can install programs and save files to the iPAQ File Store folder, which is accessed from File Explorer on your Pocket PC.

Programs and files stored in iPAQ File Store are stored in ROM and are saved if you perform a full reset of your Pocket PC or if the battery discharges completely.

To save to iPAQ File Store:

1. Copy the files to be saved to the iPAQ File Store folder.
2. From the **Start** menu, tap **Programs > File Explorer > My Device > iPAQ File Store**.
3. Paste the selected files.

NOTE: Before saving files to the iPAQ File Store folder, it is a good idea to determine how much memory is available in the folder. To view the amount of memory, from the **Start** menu, tap **Settings > System** tab > **Memory > Storage Card** tab, then select **iPAQ File Store** from the drop down menu.

Learning Input Methods

Using Input Software



CAUTION: To avoid damaging your HP iPAQ Pocket PC screen, always use a stylus. **Never** use a pen or any type of metal pointer on the screen.

To input information to your Pocket PC, you can tap the keyboard or write with the Letter Recognizer, Microsoft Transcriber, or Block Recognizer in any application. You can use the stylus to draw and write on the screen in the Notes application and from any **Notes** tab in the Calendar, Contacts, and Tasks applications.

Changing Word Suggestion Options

As you type or write, the Pocket PC suggests words for you in a box above the keyboard, Letter Recognizer, or Block Recognizer, but not in the Transcriber.

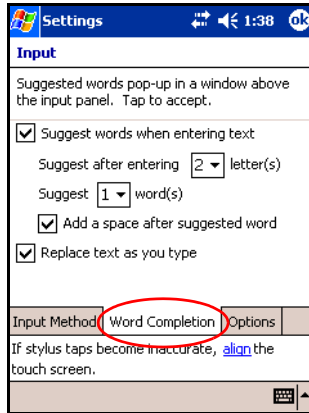
You determine:

- If words are suggested.
- The number of letters you enter before a word is suggested.
- The number of words that are suggested per entry.

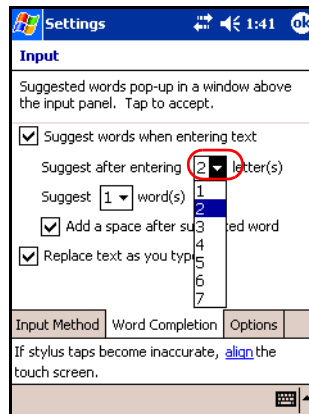
If you do not want any words suggested, remove the checkmark by tapping the checkbox next to **Suggest Words When Entering Text**.

To change settings for word suggestions:

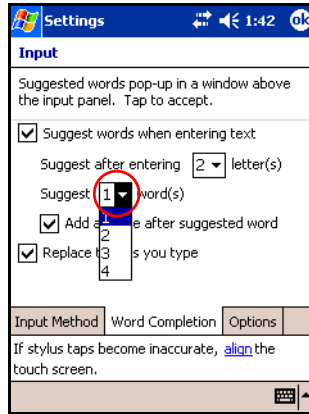
1. From the **Start** menu, tap **Settings** > **Input**.
2. Tap the **Word Completion** tab.



3. Tap the down arrow associated with letters and select the number of letters you want to type before a word is suggested.



4. Tap the down arrow associated with words and select the number of words you want suggested.

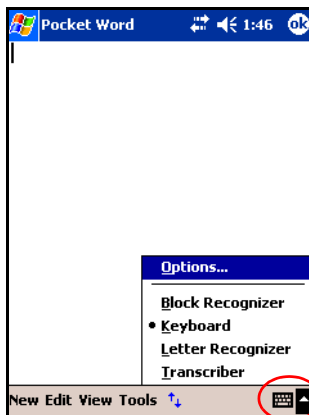


5. Tap **OK**.

Using the On-Screen Keyboard

Use the stylus to tap letters, numbers, and symbols on the on-screen keyboard to enter typed text directly onto the screen.

1. From any application, tap the up arrow next to the **Input Panel** icon.



2. Tap **Keyboard** to display a keyboard on the screen.

NOTE: To see symbols, tap the **123** or **Shift** key.

3. Tap a letter, symbol, or number to enter information.
4. Tap **OK**.

Writing with the Stylus and the Letter Recognizer

Use the stylus and Letter Recognizer to write letters, numbers, and symbols on the screen. Create words and sentences by writing in uppercase (ABC), lowercase (abc), and symbols (123) as instructed here.

To write with the stylus and Letter Recognizer:

1. From any application, tap the up arrow next to the **Input Panel** icon.
2. Tap **Letter Recognizer**.
3. Write a letter or symbol between the dashed line and baseline.
 - a. To display in uppercase, write a letter between the hatch marks labeled **ABC**.
 - b. To display in lowercase, write a letter between the hatch marks labeled **abc**.
 - c. Write a number or draw a symbol between the hatch marks labeled **123**.

What you write will be converted to text.

NOTE: A question mark within a program indicates a **Help** file. Tap the **?** to open the Help file.

NOTE: For the Letter Recognizer to work effectively, write characters between the dashed line and baseline.

- If you are writing a letter like “p,” write the top portion within the dashed line and baseline, and the tail portion below the baseline.
 - If you writing a letter like “b,” write the bottom portion within the dashed line and baseline, and the top portion above the dashed line.
-

Writing with the Stylus and Microsoft Transcriber

Use the stylus and Microsoft Transcriber to write words, letters, numbers, and symbols anywhere on the screen.

1. From any application, tap the up arrow next to the **Input Panel** icon.
2. Tap **Transcriber** to display the **Transcriber Intro** screen.
3. Tap **OK**.
4. Tap **New** at the bottom of the screen.
5. Begin writing on the screen. What you write will be converted to text.

NOTE: To “teach” Transcriber your style of writing, tap on the “*a*” icon at the bottom of the screen to display the **Letter Shapes** screen and follow the instructions.

Writing with the Stylus and Block Recognizer

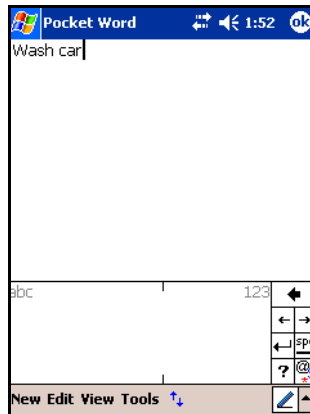
Write letters, numbers, and symbols using the stylus and Block Recognizer. Create words and sentences by writing letters and numbers in specific areas.

1. From any application, tap the up arrow next to the **Input Panel** button.
2. Tap **Block Recognizer**.

NOTE: For online Help, tap the **?**

3. Write a word, letter, or symbol between the hatch marks.
 - a. To type text, write a letter between the hatch marks labeled “abc.”
 - b. To type numbers or symbols, write a number or symbol between the hatch marks labeled “123.”

What you write will be converted to text.



Drawing and Writing on the Screen

Use the stylus as a pen to draw and write on the screen in the Notes program or from the **Notes** tab in Calendar, Contacts, or Tasks.

1. From the **Start** menu, tap **Notes > New**.
2. Draw and write on the screen.
3. Tap the **Pen** icon.
4. Tap **OK**.

Converting Writing to Text

You can convert your writing to text when you write with the stylus in the Notes program or from the Notes tab in:

- Calendar
- Contacts
- Tasks

To convert writing to text:

1. From the **Start** menu, tap **Notes**.

NOTE: Otherwise, tap the **Notes** tab in Calendar, Contacts, or Tasks.

2. Tap a note to open it.
3. Tap **Tools**.
4. Tap **Recognize**.

NOTE: To convert a particular word or phrase, highlight it before you tap **Recognize**. If a word is not recognized, it will not be converted.

5. Tap **OK**.

Using the Removeable Micro Keyboard

NOTE: Some iPAQ Pocket PC models may not include the keyboard.

The HP iPAQ Micro Keyboard is a convenient, portable input device for your HP iPAQ Pocket PC h6300 Series product. The Micro Keyboard does not require batteries and it uses a very small amount of power that is drawn from your Pocket PC.

With the Micro Keyboard, you can:

- Easily type text into your iPAQ Pocket PC.
- Quickly access your favorite iPAQ Pocket PC applications.
- Enter commands with special function keys.
- Use Send and End buttons for phone calls.

NOTE: If you regularly use an additional keyboard such as the HP Foldable Keyboard with your iPAQ Pocket PC, you may need to manually enable and disable the appropriate keyboards before use.

Connecting the Keyboard to Your iPAQ Pocket PC

To connect the Micro Keyboard to your iPAQ Pocket PC h6300 Series:

1. Press the buttons on the side of the keyboard.
2. Line up the guides on the bottom of the keyboard with the holes on the bottom of the Pocket PC.
3. Slide the Pocket PC into the Micro Keyboard until it is firmly seated.



NOTE: Repeat the above procedure to connect the Micro Keyboard to your iPAQ Pocket PC with an Extended Battery attached.

Checking the Keyboard Connection

After you've connected the keyboard to your iPAQ Pocket PC, if you press a key on the keyboard and the letter does not register, perform the following steps to check your keyboard connection:

1. Be sure the Micro Keyboard is securely connected to your iPAQ Pocket PC.
2. If the connection is secure, go to **Start > Programs > iPAQ Micro Keyboard** and be sure the **Enable Keyboard** check box is checked.
3. If the box is checked, use your stylus to press the **Reset** button on the left side of your iPAQ Pocket PC.

Disconnecting the Keyboard

To disconnect the keyboard from your iPAQ Pocket PC, push in the two buttons on the side of the keyboard to release it, then pull the Pocket PC from the keyboard.

Configuring the Keyboard

You can configure several features on your HP Micro Keyboard. To customize your keyboard:

1. On your Pocket PC, select **Start > Programs > iPAQ Micro Keyboard**.
2. Select the **Settings** tab.
3. Do one or more of the following:
 - Tap the **Enable Keyboard** check box to enable or disable the keyboard functionality.
 - Tap the **Enable Sound** check box to hear a click every time you press a key.
 - Tap and slide the **Key Repeat Rate** scale to change the speed at which the keyboard repeatedly types a character when the key is held down.
 - Tap in the **Test here:** field to verify the keyboard settings before exiting the iPAQ Micro Keyboard application.

Using the Function and Shortcut Keys

The Micro Keyboard keys perform additional functions when pressed in the combinations indicated.

The Orange Key (**current prototype does not have an Orange key and keyboard is not working on model unit**) is the function (Fn) key on the left side of the keyboard. The Blue Key is the Fn key on the right side of the keyboard. Orange symbols are located on the upper left portion of the keys. Blue symbols are located above the keys.

NOTE: It is recommended that you print this table for future reference.

Keystroke Combination	Action
Blue Key + any key	Enters characters printed on the upper right of the key (indicated in blue)
Blue Key pressed twice	Toggles on blue keys. Press Blue Key once to toggle off
Orange Key + any key	Enters character on key (indicated in orange)
Orange Key pressed twice	Toggles on orange keys. Press Orange Key once to toggle off
Orange Key + left arrow	Opens the Start menu
Orange Key + Shift	Opens the Tap and Hold menu
Orange Key + F	Creates a hyphen between letters (aa-bb)
Blue Key + down arrow	Page down
Blue Key + up arrow	Page up
Blue Key + N	Creates an underscore between letters (aa_bb)

(Continued)

Keystroke Combination	Action
Ctrl + C	Copies highlighted selection
Ctrl + V	Pastes
Ctrl + X	Cuts highlighted selection
Ctrl + A	Selects all
Ctrl + Z	Undo
Ctrl + I	Italicizes selection (toggle on/off)
Ctrl + B	Bolds selection (toggle on/off)
Ctrl + U	Underlines selection (toggle on/off)
Ctrl + N	Creates a new document in the current program
Shift hold + right arrow	Highlights area to the right of the cursor
Shift hold + left arrow	Highlights area to the left of the cursor
Shift hold + up arrow	Highlights area from the cursor to one row above the cursor
Shift hold + down arrow	Highlights area from the cursor to one row below the cursor
Application buttons (Blue Key + R, T, Y, or U)	Launch user programmable shortcuts to applications: Blue Key + R: Calendar Blue Key + T: Contacts Blue Key + Y: Inbox Blue Key + U: iTask

Accent Characters

To type any of the accent characters, press the **Blue Key**, then the accent character, then the letter you require to be accented. For example, pressing **Blue Key**, then **W**, then **a** will result in **à**.

To type a capital letter with an accent, press the **Blue Key**, then the accent character, then **Shift**, then the letter you require to be accented. For example, pressing **Blue Key**, then **W**, then **Shift**, then **A** will result in **À**.

To add **Ñ** or **ñ**, press the **Blue Key**, then either the left arrow or the right arrow.

Disabling the Micro Keyboard

If you would like to use a different keyboard with your iPAQ Pocket PC, you need to disable the Micro Keyboard first.

To disable the Micro Keyboard:

1. Select **Start > Programs > iPAQ Micro Keyboard**.
2. Select the **Settings** tab.
3. Clear the **Enable Keyboard** check box.
4. Tap **OK**.
5. Disconnect the keyboard.

You are now ready to install and connect another keyboard.

