



GB735

Bluetooth GPS Receiver User manual

Version 1.0





Tel: +886-2-8751-8598  
Email: [service@cpss.com.tw](mailto:service@cpss.com.tw)

Fax: +886-2-8797-3898  
Web: <http://www.cpss.com.tw>

## ***Introduction***

No part of this User's Manual may be reproduced or transmitted in any form or by any means, electronic or mechanical, including photocopying recording ,for any purpose other than the purchaser's personal use, without the written permission of Compass Systems Corp.

Information in this User's Manual is subject to change without notice. Compass Systems Corp. reserves the right to change or improve or modify its products and to make changes to the content without obligation to notify any person or organization of such changes.

©Copy right 2006 by Compass Systems Corp. All rights reserved.

Printed in Taiwan

## ***Introduction***

### **WARNINGS**

Some certain knowledge is required to be well known by the user for proper and safe use of Navibe Bluetooth GPS receiver. Please read this User's Manual first before operation.

Because Navibe Bluetooth GPS receiver is an assistant device, it will NOT undertake any legal responsibility for any accident or damage caused by the user's wrong operation and/or wrong judgement in navigating with Navibe.

## Introduction

### CAUTION

The Global Positioning System(GPS) is a system of 24 satellites which circle the earth twice a day in a very precise orbit and transmit information to earth. The Navibe unit must continuously find at least three of these satellites to calculate your position and your movement.

This GPS system is operated by the government of the United States, which is solely responsible for its accuracy and maintenance. Any changes of the system could affect the accuracy and performance of all GPS equipment.



**PLEASE CHARGE BATTERY FULLY BEFORE INITIAL USE.**  
(When fully charged, red color-LED2 will automatically switch off.)

## ***Introduction***

**Thank you for choosing Navibe Bluetooth GPS Receiver!  
Take it now -----it can be your best friend!**

**Application Conditions:**

Navibe is designed for outdoors navigation in the temperature range of  $-20^{\circ}\text{C}$ ~  $70^{\circ}\text{C}$ .

**Introduction** section gives you a general overview of Navibe features.

**Reference** section tells how to operate the unit correctly and how to connect this unit to your pocket PC step-by-step.

If you find something missing or damaged with the reference to the standard package, please contact the local dealer or retailer.

# ***Introduction***

## **Chapter I Introduction**

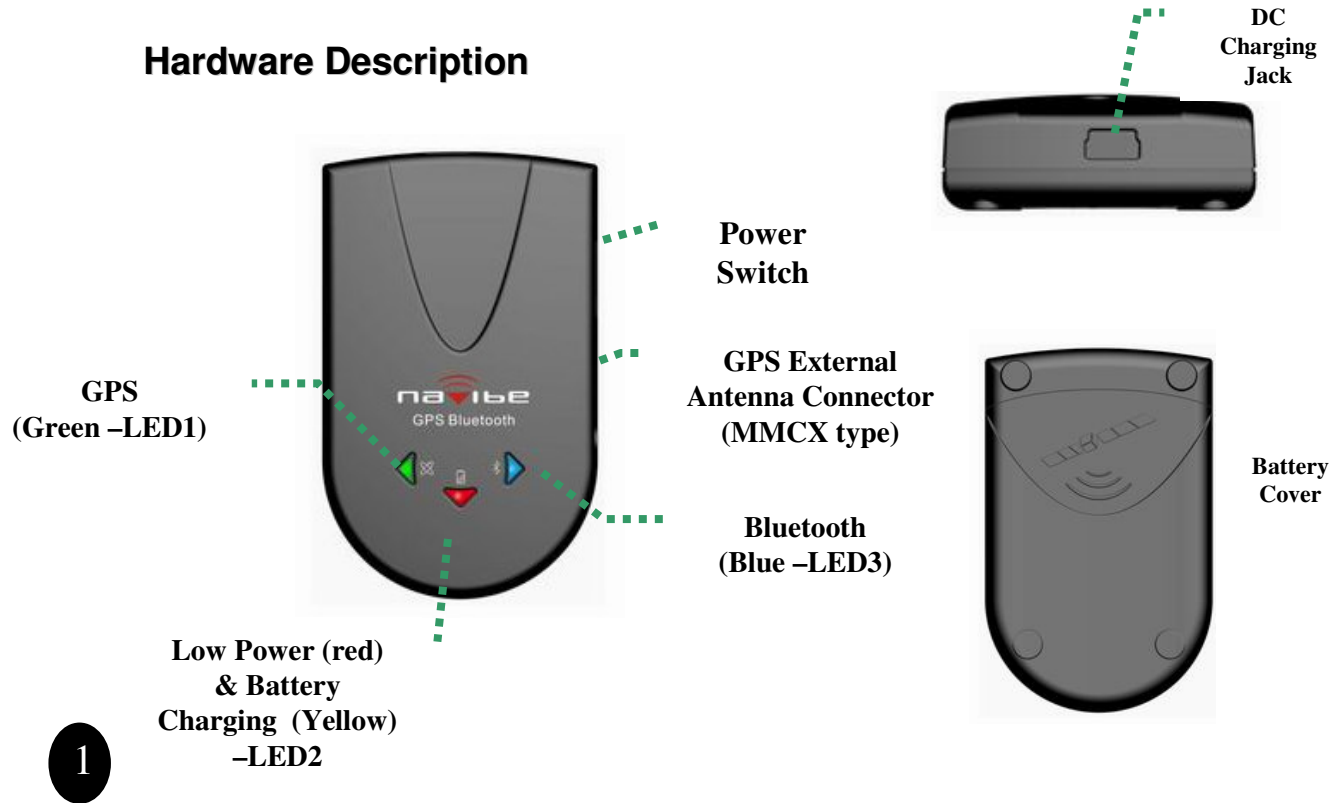
Section 1	Announcement	i
Section 2	Warnings	ii
Section 3	Caution	iii
Section 4	Welcome to Navibe	iv
Section 5	Table of Contents	v

## **Chapter II Reference**

Section 1	Hardware Description	1
Section 2	State Table of LED	2
Section 3	Packet PC Setup	5-8

# Reference

## Hardware Description



## Reference

### State Table of LED

<b>LED 1</b> (Left)	<b>GPS Status</b>	
	Green ON	Position Locked
	Green Flashing	Signal Acquiring
<b>LED 2</b> (Middle)	<b>Low Power &amp; Battery Charging LED</b>	
	Red ON	Low Power
	Yellow ON	Charging
	Yellow OFF	Battery Charged
<b>LED 3</b> (Right)	<b>Bluetooth LED</b>	
	Blue Flashing	Pairing
	Blue ON	Connected



### Usage

#### Turn on

To turn on the receiver, first, make sure that the battery is loaded securely then push the power switch to “ON” position. The green LED (LED 1) indicator will be flashing for searching GPS satellites. The blue LED (LED 3) indicator will start flashing for searching Bluetooth device.

#### Turn off

To turn off the receiver, push the power switch to “OFF” position. All of the LED indicators will turn off.

#### Low Power & Charging

The second LED (LED 2) indicator will turn RED when battery power becomes low. Connect the receiver to a power source to recharge the battery. When the battery is being charging, LED2 will turn YELLOW. When fully charged, the YELLOW indicator will switch OFF. Please charge the battery fully before first use.

## **Reference**

### **Usage**

#### **Bluetooth Device**

The right LED (LED 3) blue indicator will flash for pairing Bluetooth signals. When connected, the LED blue indicator (LED3) will become to steady on.

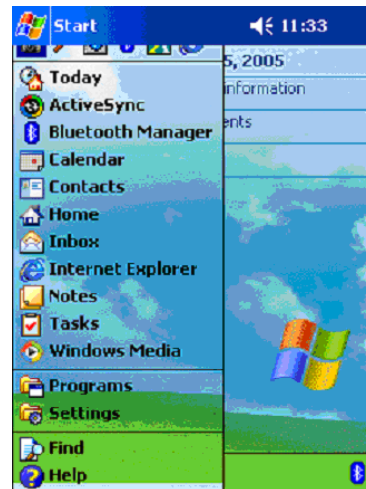
#### **GPS Status**

The first LED (LED 1) green indicator will be flashing when searching satellites. When fixed, the LED green indicator (LED1) will become to steady on.

## Pocket PC Setup



**Note:** In “Bluetooth: Device Pairing” window you will be required to enter the Passkey number **0000** when opening the port in your GPS program.



1. Tap “Bluetooth Manager” from Start Menu



2. Tap New > Connect

## Reference



3. Tap Explore a Bluetooth device, then tap Next



4. Tap where indicated to choose a device. And select the ID "BT GPS" or "BT GPS Vx0" to continue. ("x" = 1~9)

## Reference



5. The PDA will begin retrieving services as shown above



6. Select "SPP Slave" and tap Next

## Reference



7. Tap **Finish** to establish the BT GPS. .. Bluetooth GPS connection

8



8. In the future, you may establish the connection from the shortcut, "BT GPS:SPP Slave" or "BT GPS Vx0: SPP Slave"

### **Federal Communications Commission (FCC) Statement**

15.21

You are cautioned that changes or modifications not expressly approved by the part responsible for compliance could void the user's authority to operate the equipment.

15.105(b)

This equipment has been tested and found to comply with the limits for a Class B digital device, pursuant to part 15 of the FCC rules. These limits are designed to provide reasonable protection against harmful interference in a residential installation. This equipment generates, uses and can radiate radio frequency energy and, if not installed and used in accordance with the instructions, may cause harmful interference to radio communications. However, there is no guarantee that interference will not occur in a particular installation. If this equipment does cause harmful interference to radio or television reception, which can be determined by turning the equipment off and on, the user is encouraged to try to correct the interference by one or more of the following measures:

- Reorient or relocate the receiving antenna.
- Increase the separation between the equipment and receiver.
- Connect the equipment into an outlet on a circuit different from that to which the receiver is connected.
- Consult the dealer or an experienced radio/TV technician for help.

### **Operation is subject to the following two conditions:**

- 1) this device may not cause interference and
- 2) this device must accept any interference, including interference that may cause undesired operation of the device.

### **FCC RF Radiation Exposure Statement:**

This equipment complies with FCC radiation exposure limits set forth for an uncontrolled environment. End users must follow the specific operating instructions for satisfying RF exposure compliance. This transmitter must not be co-located or operating in conjunction with any other antenna or transmitter.

**Compass Systems Corp. Tel: +886-2-8751-8598 Fax: +886-2-8797-3898 Email: [service@cpss.com.tw](mailto:service@cpss.com.tw) <http://www.cpss.com.tw>**

**©Copy right 2006 by Compass Systems Corp. All rights reserved. Printed in Taiwan**