



Quick Installation Guide

Bluetooth GPS Receiver

Model: GB621

Quick Installation Guide

Bluetooth GPS Receiver

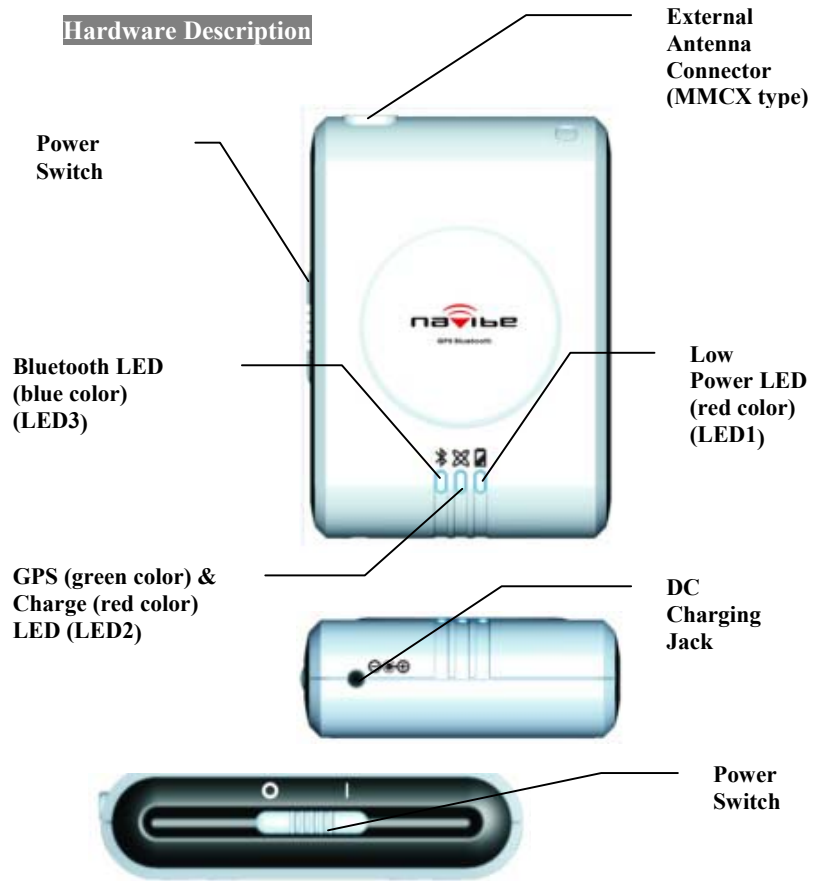
Model: GB621

Before You Start

Your new COMPASS Bluetooth GPS allows you to turn any Bluetooth™ enabled PDAs (Pocket PC) or PCs into a GPS Navigation System using Bluetooth Technology.

1. Hardware Description.....	2
2. State Table of LED.....	4
3. Pocket PC Setup	6

Hardware Description



PLEASE CHARGE BATTERY FULLY BEFORE INITIAL USE. (When fully charged, red color-LED2 will automatically switch off.)

The Bluetooth GPS has three LED indicators. The first is low power LED indicator that is named LED1. The second is GPS & Charge status LED that is named LED 2. The third is Bluetooth status LED that is named LED 3. The status table of LED shows as follows:

State Table of LED

LED1

Low Power LED	Description
LED1 Color and Action	Low Power
Red off	No
Red on	Yes

LED2

GPS & Charge LED	Description	
LED2 Color and Action	Battery Charged	Position Fixed
Green on	N/A	No
Green Flash	N/A	Yes
Red Flash	Charging	N/A
Red off	OK	N/A

LED3

Bluetooth LED	Description
LED3 Color and Action	Bluetooth Pairing
Blue Flash	No
Blue on	Yes



Turn on

To turn on the receiver, push the power switch to “I” position. The green LED (LED 2) indicator will steady on for searching GPS satellites. The left blue LED (LED 3) indicator will start flashing for searching Bluetooth device.

Turn off

To turn off the receiver, push the power switch to “O” position. All of the LED indicators will turn off.

Low Power

The right LED (LED 1) indicator will turn RED when battery power becomes low. Connect the receiver to a powers source to continue to recharge the battery.

Charging

The second LED (LED 2) red indicator will flash when the battery is being charged. When fully charged, the RED indicator will switch off.

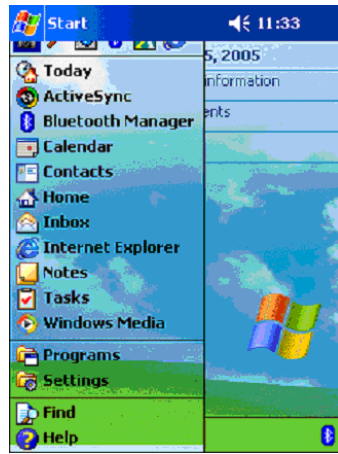
Search for Bluetooth Device

The left LED (LED 3) blue indicator will flash for pairing Bluetooth signals. When connected, the left LED (LED3) blue indicator will become to steady on.

Position Fixed for GPS

The second LED (LED 2) green indicator will steady on for searching satellites. When fixed, the second LED (LED2) green indicator will become to flash.

Pocket PC Setup



Tap “Bluetooth Manager” from Start Menu

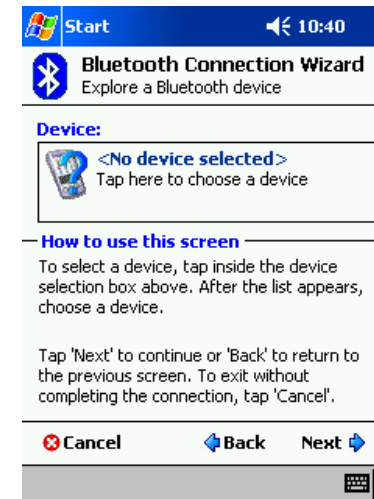
Note: In “Bluetooth: Device Pairing” window you will required to enter the Passkey number **0000** when opening the port in your GPS program.



Tap New > Connect



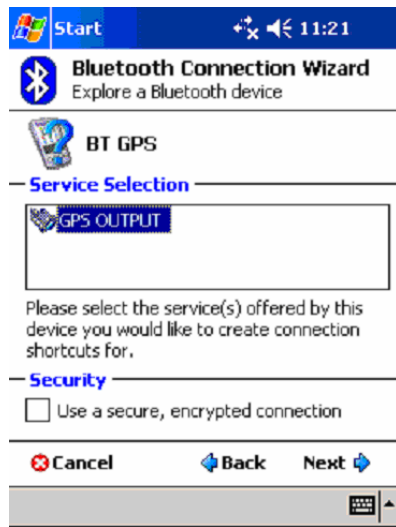
Tap Explore a Bluetooth device, then tap Next



Tap where indicated to choose a device.
And select the picture marked “BT GPS” to continue



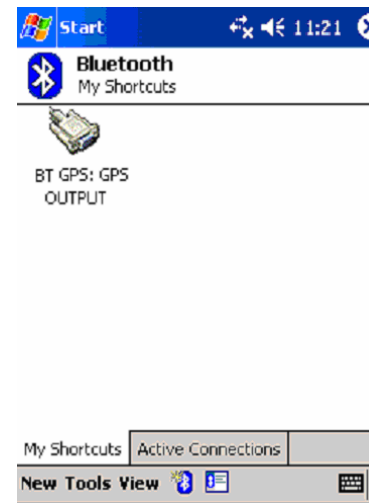
The PDA will begin retrieving services as shown above



Select "GPS OUTPUT" and tap Next



Tap **Finish** to establish the BT GPS Bluetooth GPS connection



In the future, you may establish the connection from the shortcut, "BT GPS: GPS OUTPUT"

FCC Statement

This equipment complies with FCC radiation exposure limits set forth for an uncontrolled environment. End users must follow the specific operating instructions for satisfying RF exposure compliance. This transmitter must not be co-located or operating in conjunction with any other antenna or transmitter.

Notice: Any changes or modification not expressly approved by the party responsible could void the user's authority to operate the device.

Technical Support

If you have any questions or problems installing the Bluetooth GPS, please contact Technical Support.

Hours: Weekdays 9 a.m. ~ 6 p.m.

Taiwan

<http://www.navibe.com>

E-mail: service@cpss.com.tw