

*****Caution*****

Changes or modifications not expressly approved by the party responsible for the compliance could void the user's authority to operate the equipment.

***** FCC Statements*****

This device complies with part 15 of the FCC Rules. Operation is subject to the following two conditions: (1) This device may not cause harmful interference, and (2) this device must accept any interference received, including interference that may cause undesired operation.

This device complies with Part 15 of the FCC Rules. Operation is subject to the following two conditions: (1) this device may not cause harmful interference, and (2) this device must accept any interference received, including interference that may cause undesired operation.

This device is intended only for OEM integrators under the following conditions:

1) The antenna must be installed such that 20 cm is maintained between the antenna and users. For laptop installations, the antenna must be installed to ensure that the proper spacing is maintained in the event the user places the device in their lap during use (i.e. positioning of antennas must be placed in the upper portion of the LCD panel only to ensure 20 cm will be maintained if the user places the device in their lap for use), and

2) The transmitter module may not be co-located with any other transmitter or antenna. As long as the 2 conditions above are met, further transmitter test will not be required. However, the OEM integrator is still responsible for testing their end-product for any additional compliance requirements required with this module installed (for example, digital device emissions, PC peripheral requirements, etc.).

IMPORTANT NOTE:

In the event that these conditions can not be met (for example certain laptop configurations or co-location with another transmitter), then the FCC authorization is no longer considered valid and the FCC ID can not be used on the final product. In these circumstances, the OEM integrator will be responsible for re-evaluating the end product (including the transmitter) and obtaining a separate FCC authorization.

End Product Labeling:

This transmitter module is authorized only for use in device where the antenna may be installed such that 20 cm may be maintained between the antenna and users (for example access points, routers, wireless ADSL modems, certain laptop configurations, and similar equipment). The final end product must be labeled in a visible area with the following:

"Contains TX FCC ID: TK4-06-WLM54AGP23".

Manual Information for End Users

The end user must not have manual instructions to remove or install the device. The user manual for end users must include the following information in a prominent location.

"IMPORTANT NOTE:

To comply with FCC RF exposure compliance requirements, the antenna used for this transmitter must be installed to provide a separation distance of at least 20 cm from all persons and must not be co-located or operating in conjunction with any other antenna or transmitter."

Quick Install Guide

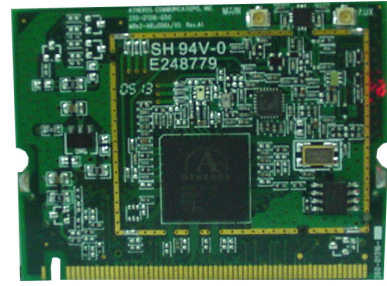
Compex Wireless-AG 23 dBm Network Mini PCI Adapter

WLM54AGP23

Version 1.1



1. Introduction



This mini PCI adapter, Compex WLM54AGP23 contains a dual-mode single chip MAC/BB/Radio for IEEE 802.11a, 11g and 11b Wireless LAN. It can support high-speed data transmission of up to 54Mbps in the 2.4GHz and 5GHz frequency bands based on 802.11b/g and 802.11a mode respectively.

Based on the latest industry standard Wi-Fi Certified IEEE 802.11a/b/g specification, the Compex WLM54AGP23 offers maximum channel speeds of up to 54 Mbps. It supports key security features like Wi-Fi Protected Access (WPA), WPA2, WEP and 802.1x.

You can find this adapter that is seated inside the wireless products such as the WPE54AG. WLM54AG can be removed from or inserted onto the PCBA of the WPE54AG.

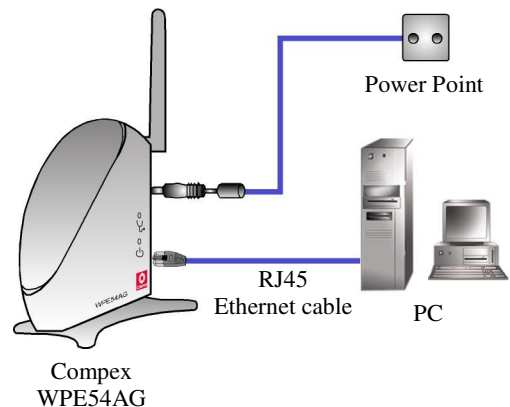
2. Package Content

Compex WPE54AG retail package contains the following items:

- 1 x Compex WPE54AG
- 1 x External Power Adapter
- 1 x 3dBi SMA Antenna
- 1 x Base Stand
- 1 x RJ45 MDIX cross-over Ethernet cable
- 1 x Quick Install Guide with Warranty Registration Form
- 1 x Product CD (including Quick Install Guide, User's Manual, Firmware Recovery Tool & Utilities)

3. Hardware Installation

1. Connect one end of the RJ45 crossover Ethernet cable to your PC and another end to the Ethernet port of your Compex WPE54AG.
2. Next, attach the power adapter supplied in the packaging to the power point.
3. Connect the power plug onto the socket on your Compex WPE54AG.

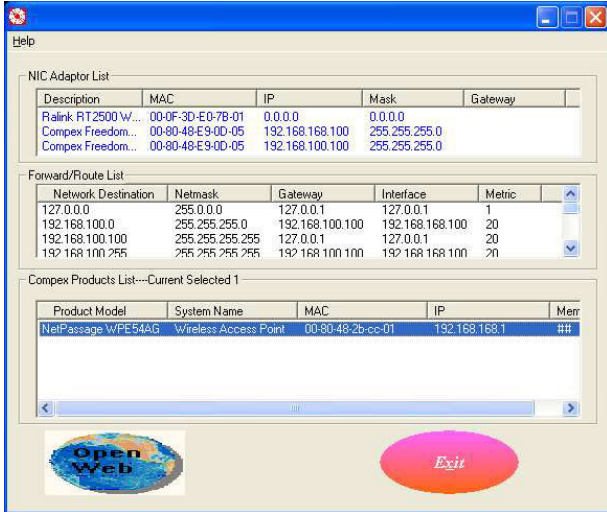


4. Power ON your Compex WPE54AG and your PC. Notice that the **LAN Link/ACT** and **Power** LEDs have lighted up. This indicates that the connection has established successfully between your Compex WPE54AG and your PC.

4. Access to Web-based Interface

Complex has developed a powerful uConfig utility which provides you hassle-free access to the web-based configuration page. To do so, simply

1. Insert your Product CD into your CD-ROM drive. Go to **Utilities** section and select **uConfig** to run the program.
2. The following screen shot will appear. Select **NetPassage WPE54AG** and click on **OpenWeb** button to access to the authentication page.



3. The password is pre-configured as *password* in the field provided. Click on **Log On!** button to access to the main page.

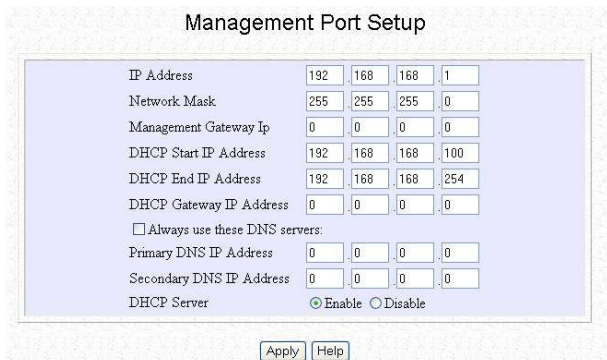
Wireless LAN Access Point Management



After accessing to the main page of your Complex WPE54AG, you can start doing your configuration

5. Basic Configuration for Complex WPE54AG

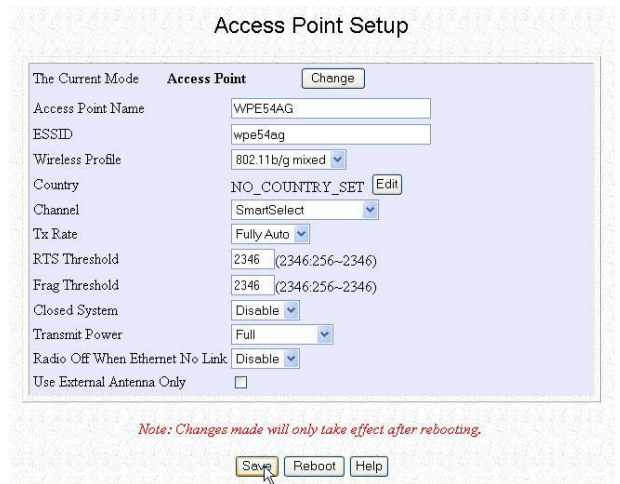
1. To handle automatic IP addressing, go to **Management Port** under **CONFIGURATION** section.
2. Go to **DHCP Server** option and select **Enable** radio button. Click on **Apply** button to update the changes.



Now, your Complex WPE54AG acts as a DHCP Server which can assign IP address to your PC/clients.

6. WLAN Basic Setup for Complex WPE54AG

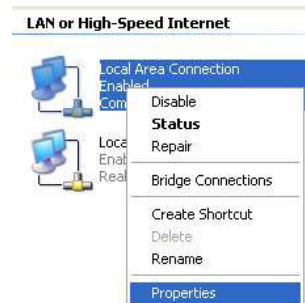
1. To configure your Complex WPE54AG for your wireless user, go to **WLAN Basic Setup** from the **CONFIGURATION** section.
2. From your **Access Point Setup** window, key in the **ESSID** that you intend to use for your wireless network.
3. You may leave the frequency channel as **SmartSelect**. This allows your access point to select the channel automatically.
4. Leave the remaining settings as default and click **Apply** button to update the changes.



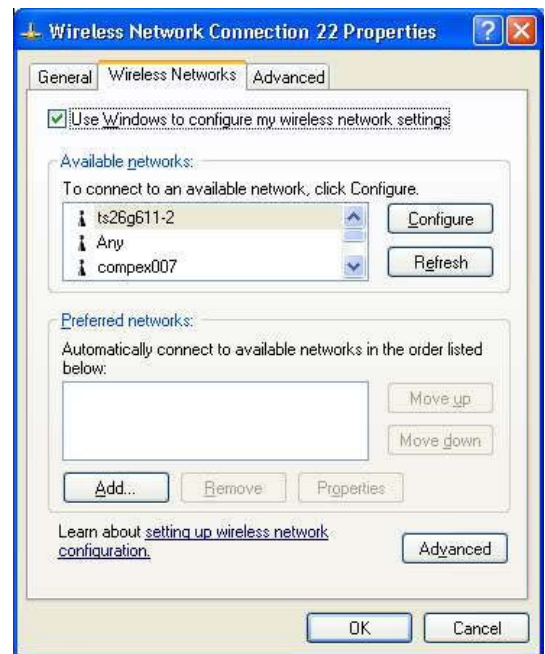
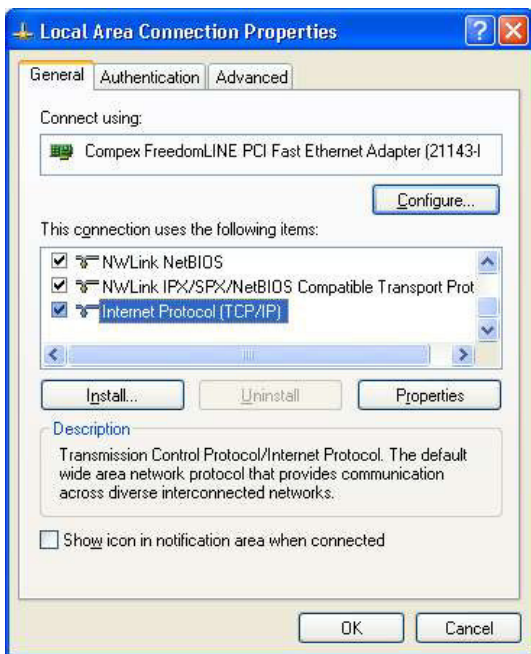
7. TCP/IP Configuration for wireless clients

Generally, automatic IP addressing should be configured for your wireless client PCs or notebooks. You may configure the TCP/IP settings of Microsoft windows XP as follows:

1. From your desktop, right click on **My Network Places** and select **Properties**.
2. Next, right click on your Ethernet Adapter go to **Properties**.

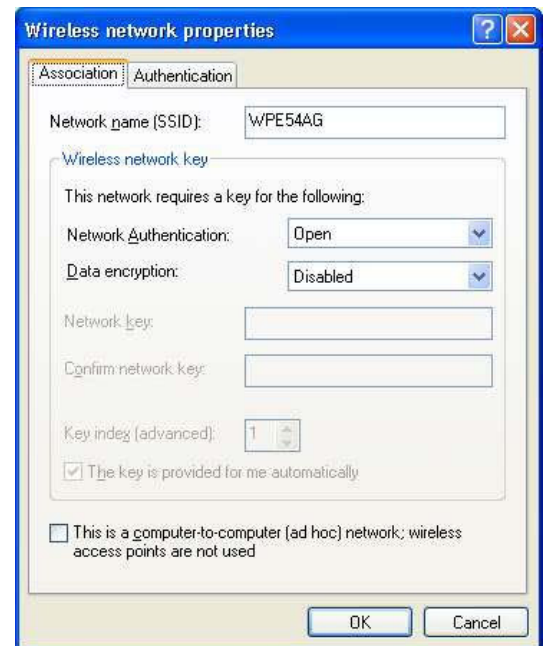
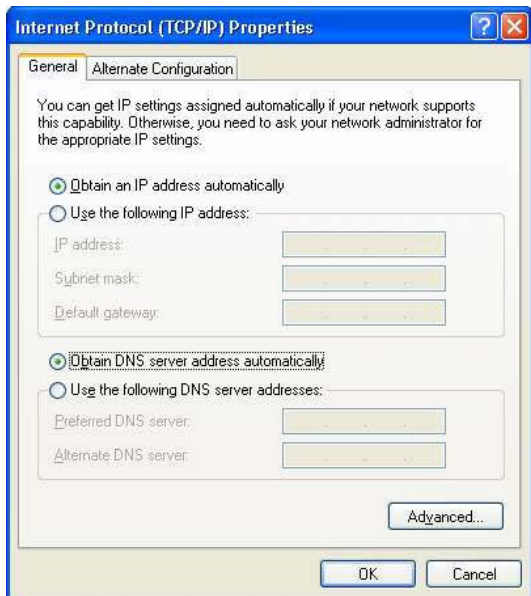


3. Highlight **Internet Protocol (TCP/IP)** and click on **Properties** button.



4. Select the radio buttons for **Obtain an IP address automatically** and **Obtain DNS server address automatically**. Click **OK** button to update the changes.

7. Next, enter the **Network name (SSID)** which must be the same as the ESSID that you input earlier for your access point.



Next, you may set up Windows XP's Wireless Network Connection as follows:

5. Right click on **Wireless Network Connection** corresponding to the Wireless Ethernet Adapter you wish to connect to your Compex WPE54AG, and click on **Properties**.



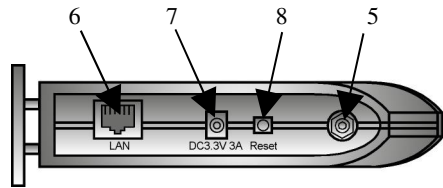
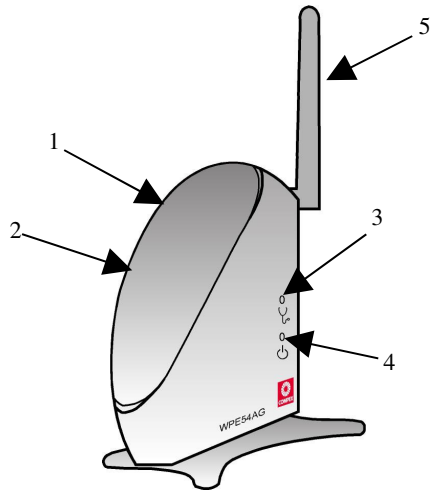
6. Go to **Wireless Networks** tab and click on **Add..** button.

Ensure that the Network name (SSID) value is the same for all wireless clients in the same wireless network.

For now, you may leave the other information as its default settings.
Network Authentication: Open
Data encryption: Disabled

For details in configuring your Compex WPE54AG, kindly refer to the User's Manual stored in the Product CD.

8. Panel Views and Descriptions



Features		Status and Indications	
1	LAN Link/Act LED	Steady Yellow	Compex WPE54AG is operating at the speed of 10Mbps.
		Steady Green	Compex WPE54AG is operating at the speed of 100Mbps.
2	WLAN Link/Act LED	Steady Green	More than 1 wireless client is present in the wireless network.
		Blinking Green	Activity is detected in the wireless network.
3	Diagnostic LED	Steady Green	The device is in access point or gateway mode.
		Blinking Green	The device is booting.
		Off	The device is in Client mode.
4	Power LED	Steady Blue	Power is supplied to the device.
		Off	No power is supplied to the device.
5	External Antenna	Rotatable antenna	
6	LAN RJ45 Ethernet Port	Using RJ45 Ethernet cable for connection.	
7	DC 3.3V 3A	Power input of 3.3VDC	
8	Reset button	Push button: <ul style="list-style-type: none"> ◆ 2s to reboot your device ◆ between 2s to 10s to restore to its factory default ◆ > 10s for operating mode switch 	

This document may become superseded, in which case you may find its latest version at:
<http://www.compex.com.sg/prodspec.asp?f=Manual&s=1>

Disclaimer: Compex, Inc. provides this guide without warranty of any kind, either expressed or implied, including but not limited to the implied warranties of merchantability and fitness for a particular purpose. Compex, Inc. may make improvements and/or changes to the product and/or specifications of the product described in this guide, without prior notice. Compex, Inc. will not be liable for any technical inaccuracies or typographical errors found in this guide. Changes are periodically made to the information contained herein and will be incorporated into later versions of the guide. The information contained is subject to change without prior notice.

Trademark Information: Compex®, ReadyLINK® and MicroHub® are registered trademarks of Compex, Inc. Microsoft Windows and the Windows logo are the trademarks of Microsoft Corp. NetWare is the registered trademark of Novell Inc. All other brand and product names are trademarks or registered trademarks of their respective owners.

Notice: Copyrights © 2004 by Compex, Inc. All rights reserved. Reproduction, adaptation, or translation without prior permission of Compex, Inc. is prohibited, except as allowed under the copyright laws.

Manual Revision by Ann
 Manual Number: M-0428-V1.2C Version 1.2, April 2005

POWER

FCC NOTICE: This device has been tested and found to comply with the limits for a Class B digital device, pursuant to Part 15 of the FCC Rules. These limits are designed to provide reasonable protection against harmful interference in a residential installation. This device generates, uses and can radiate radio frequency energy and, if not installed and used in accordance with the instructions, may cause harmful interference to radio communications. However, there is no guarantee that interference will not occur in a particular installation. If this device does cause harmful interference to radio or television reception, the user is encouraged to try to correct the interference by one or more of the following measures:

- ◆ Reorient or relocate the receiving antenna.
- ◆ Increase the separation between the computer and receiver.
- ◆ Connect the computer into an outlet on a circuit different from that to which the receiver is connected.
- ◆ Consult the dealer or an experienced radio / TV technician for help.

Caution: Any changes or modifications not expressly approved by the grantee of this device could void the user's authority to operate the equipment.

FCC Compliance Statement: This device complies with Part 15 of the FCC Rules. Operation is subject to the following two conditions:

- (1) This device may not cause harmful interference, and
- (2) This device must accept any interference received, including interference that may cause undesired operation.

Products that contain a radio transmitter are labeled with FCC ID and may also carry the FCC logo.

Caution: Exposure to Radio Frequency Radiation.

To comply with the FCC RF exposure compliance requirements, the following antenna installation and device operating configurations must be satisfied:

- a. For configurations using the integral antenna, the separation distance between the antenna(s) and any person's body (including hands, wrists, feet and ankles) must be at least 2.5cm (1 inch).
- b. For configurations using an approved external antenna, the separation distance between the antenna and any person's body (including hands, wrists, feet and ankles) must be at least 20cm (8 inch).

The transmitter shall not be collocated with other transmitters or antennas.

ICES 003 Statement

This Class B digital apparatus complies with Canadian ICES-003.

DECLARATION OF CONFORMITY: Compex, Inc. declares that the product:

Product Name: Compex Wireless-A/G Dual-Band Network Access Point

Model No.: WPE54AG conforms to the following Product Standards:

Radiated Emission Standards: ETSI EN 300 328-2; July 2000; FCC: 47 CFR Part 15, Subpart B, ANSI C63.4-1992; 47 CFR Part 15, Subpart C (Section 15.247), ANSI C63.4-1992.

Conducted Emission Standards: ETS 300 826; Nov. 1997.

Immunity Standards: IEC 801-2; IEC 801-3; IEC 801-4

Low Voltage Directive: EN 60 950:1992+A1; 1993+A2; 1993+A3; 1995+A4; 1996+A11; 1997

Therefore, this product is in conformity with the following regional standards: FCC Class B – following the provisions of FCC Part 15 directive; **CE Mark** – following the provisions of the EC directive.

Manufacturer's Name: Compex, Inc.
 Address: 840 Columbia Street, Suite B
 Brea, CA 92821, USA

-----Cut along the dotted line-----><-----Cut along the dotted line-----><-----Cut along the dotted line-----><-----

WARRANTY REGISTRATION CARD		(M-0088-V2.4C)	
Register via the Internet at http://www.cpx.com or http://www.compex.com.sg			
To activate the warranty, please complete this card and return to Compex within ninety (90) days from the date of purchase.			
Please e-mail this warranty card to support@compex.com.sg .			

Product:	Purchase Date:	Model:	Serial No:
Name:		E-mail:	
Company:			
Address:			
Postal/Zip Code:		Country:	
Phone: ()			

Note:

For purchases within U.S.A and Canada, please fax to Compex, Inc. at (714) 482 0332
 For purchases outside U.S.A and Canada, please fax to Compex Systems Pte Ltd at (65) 6280-9947

-----Cut along the dotted line-----><-----Cut along the dotted line-----><-----Cut along the dotted line-----><-----