

Bluetooth Light Speaker Quick Start Guide

Introduction

This Bluetooth Light Speaker is a perfect combination of LED lamp and Bluetooth Speaker. It can be controlled by iOS or Android system with application installed. You will be surprised to match it well with your desk lamp. Enjoy it!

The Package Contents

1x Bluetooth Light Speaker

1x Quick Start Guide

Caution

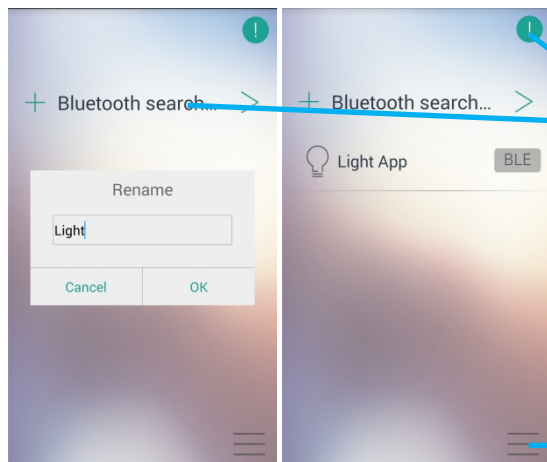
1. Please read and follow all instructions before operating this product.
2. Heed all warnings on the product and in the operation instructions.
3. Please cut power off before install or uninstall the product.
4. When LED lamp on, suggest not touch the product surface in case being burned.
5. Suggest not use metal lampshade in case the wireless signal suffers from attenuation.
6. With LED lamp on, if not plan to listen music, suggest to turn Bluetooth off by pressing Bluetooth power button on application interface. It can save power, extend Bluetooth lifetime and reduce interference to lamp from Bluetooth.
7. With LED lamp on and brightness not reaching 100%, there maybe some slight background noise which is normal.
8. External dimmer does not work for the product. You can adjust lamp brightness by using application on iOS or Android system.
9. Do not open the product to avoid electronic shock. Repair has to be performed by a qualified technician.
10. Cut power off if not to use the product for a long period of time.
11. The product has a wireless transmission distance up to 33ft, but wireless performance may be affected in different operating environment.
12. Keep the product out of extreme heat and humidity. Do not install it near heaters, stoves or any other source of heat.
13. Do not use the product during lightning storms. Turn the power off to prevent damage to the product due to lightning and power-line surges.
14. Please do not stare at the light source for a long time to protect your eyes.
15. If cleaning is required, use a soft dry cloth. Before cleaning, unplug the device from the electrical source.

Product Installation

1. Take the Bluetooth Light Speaker and Quick start guide out of your package.
2. Before installing the Light Speaker into your lamp system, make sure the power is off.
3. Screw Light Speaker into E26 socket.
4. Turn the power on, white LED will be lit and speaker will enter Bluetooth pairing status with indication LED blinking fast in blue.

Bluetooth connection to enter control interface

1. Download “LS10BT APP” from Apple app store or Android application market and install it on your mobile phone with Android system 4.3 or higher version (or with iOS system 7.0 or higher version)
2. Touch “LS10BT APP” icon on your mobile phone to go to below interface.

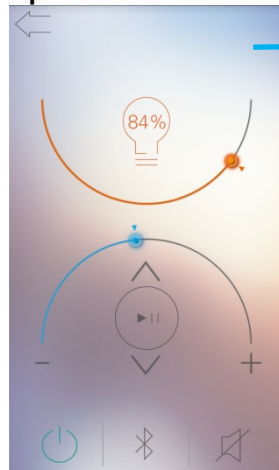


Notification

1. Touch “Bluetooth search” to rename your Bluetooth Light speaker. For example: “Light APP”
2. After showed in the list, Touch “ BLE ” for connection, when it turns into BLE , Bluetooth for control is connected and go to operation interface automatically.

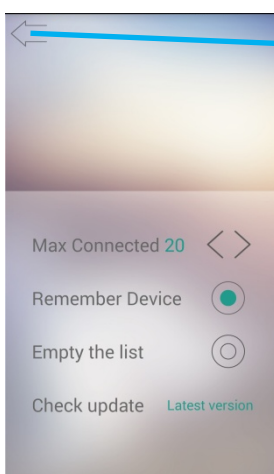
Touch icon “☰” to “do settings, pls refer to step 3

Operation interface



1. ⬅️ :Back to previous interface
2. Light control: slide 📏 to adjust the brightness of LED. Brightness percentage will be indicated accordingly.
3. Speaker volume control: you have two options
 - 1). Slide 📏 to adjust the volume of speaker, 2). Touch + - to adjust the volume of speaker
4. ▶️⏸️ : play / pause
5. ⏮️ : last track; ⏭️ : next track
6. ⏻ : power for audio Bluetooth
7. 🚫 : Disconnect Bluetooth pairing by short touch. When audio Bluetooth connected, it's showed in green color.
8. 🔇 : Touch for mute and unmute.

3. Setting your Light application



1. Back button; ⬅️
2. Max Connected:

Press on < or > to decrease or increase Max allowed connected Light speaker. Max is 20pcs.
3. Remember Device

With this chosen, it can auto connect last paired device for APP control when reuse the BT Light speaker.
4. Empty the list

Disconnect all BT Light speakers for APP control
5. Check update

If it's already the latest version for APP, it's showed latest version. If not latest, it will ask whether to update.

Bluetooth connection for audio

1. Make sure Bluetooth Speaker is at pairing status (indication LED blinking fast in blue and you can lower white LED brightness by phone control interface to check indication LED status better)
2. Make sure Bluetooth device (smart phone, pad etc) has open Bluetooth.
3. Enter Bluetooth interface to search for new device and select "MG-LBTS01APP" for pairing. During pairing, some Bluetooth devices require to enter password. Just type four zeros "0000".
4. Indication LED will stop blinking and keep solid in blue after Bluetooth connected.
5. Open music player to play the music you like.
6. You can use your Bluetooth device (smart phone, pad etc) or phone control interface control to do play/pause, volume up/down, last track, next track, mute operation and so on.

Note:

1. If your Bluetooth device (smart phone, pad etc) has ever connected this Bluetooth Light Speaker, it supports Bluetooth automatically reconnect without pairing.
2. There is a Bi-color (red/blue) LED for Bluetooth, volume control and mute indication:
 - Bluetooth pairing: blinking fast in blue;
 - Bluetooth reconnecting: blinking slowly in blue;
 - Bluetooth connected: blue color on in solid;
 - Mute status: red color on in solid;
 - Volume control: blue color on in solid and red color blinking with every volume adjusting operation.

Product Specification

Product name: Bluetooth Light Speaker

Model: MG-LBTS01APP

Driver unit: 1.5" full range driver

Rated lamp power: 7W

Rated speaker power: 3W with 1% THD

Rated voltage: 100-240V Socket: E26

Power factor (PFC) ≥ 0.68

Standby power consumption $\leq 0.5W$

Rated useful luminous flux: 300lm

Color temperature: 3000K

Color rendering index ≥ 80

Product dimension (W X D X H): 2.7X2.7X3.9 in. (68X68X98mm)

FCC Part 15 Statement

1. This device complies with part 15 of the FCC Rules.

Operation is subject to the following two conditions:

- (1) This device may not cause harmful interference
- (2) This device must accept any interference received, including interference that may cause undesired operation.

2. Changes or modifications not expressly approved by the party responsible for compliance could void the user's authority to operate the equipment.



Trouble shooting

See below for solutions to common problems. If you have more questions to your Bluetooth Light Speaker, you may contact with local distributor for assistance.

Symptom	Solution
Bluetooth indication LED not on	Please make sure your Bluetooth Light Speaker has been powered on.
	Try to short press audio Bluetooth power button on phone control interface.
Speaker does not produce sound	Please make sure your Bluetooth Light Speaker has been powered on.
	Make sure the volume is turned up to audible listening level for both Speaker and your Bluetooth device (smart phone, pad etc).
	Make sure the Bluetooth is successfully connected.
Bluetooth can not be connected	Make sure the Bluetooth is open on your Bluetooth device.
	Make sure correct Bluetooth pairing password has been entered if required.
	During Bluetooth paring, please do not open too many Bluetooth devices to avoid interference to Bluetooth connection.
	If failed at pairing, short press audio Bluetooth paring button on phone control interface to pair again. Or you can try to pair with another Bluetooth device.
	This product may not be able to set up Bluetooth connection successfully with some non smart phones from Oppo, ZTE, Lenovo etc.

Sound distortion	WAV and MID files are often poor quality. Therefore distortion and noise are easily noticed with powered speakers.
	Check the volume level and decrease if necessary.
“LS10BT APP” application can not run well on phone	Please make sure phone has iOS system 7.0 or higher version (or with Android system 4.3 or higher version).
	Some functions on control interface may not be supported on some smart phones.