

3G GPS Vehicle tracker

(GPS+WCDMA+SMS)

User Manual

(Version 1.0)



This user manual has been specially designed to guide you through the functions and features of your GPS vehicle tracker.

1. Start Guide

1.1 Accessories:

- Device
- Power cord
- Relay (Optional)
- Microphone
- SOS alarm cable & button
- User Manual

1.2 Main Functions

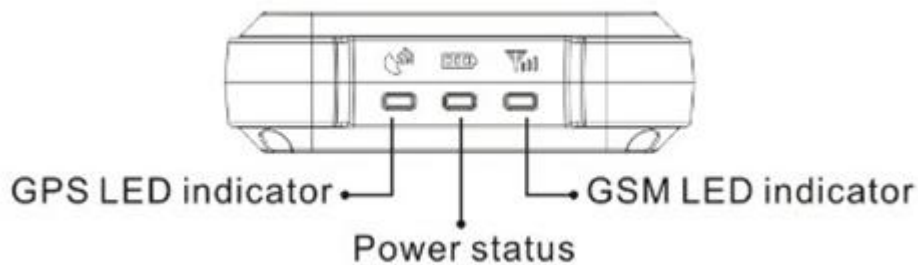
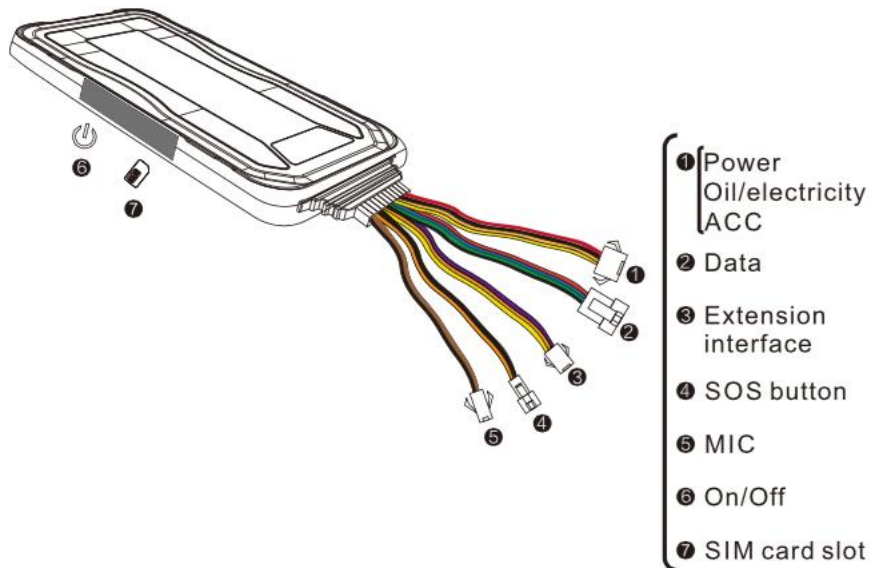
- Real-time tracking
- Vibration/Displacement/Low battery/Power off alert
- SOS
- ACC detection
- Geo-fence
- Mileage
- Air update
- AGPS locating
- Remotely control electricity/oil
- Analogue input
- Output control
- Digital input

1.3 Specifications

Frequency	WCDMA 850/900/1900/2100MHz
	GSM 850/900/1800/1900MHz
Networks	WCDMA /GPRS
Operating Voltage	9-36VDC<300mA
Location Time	Cold Start: <35s
	Hot Start: <2s
Location Accuracy	<10 meters
Operating Temperature	-20°C — +70°C
Dimension	98.5(L) x 52(W) x 15(H) mm
Weight	80g

2 My device

2.1 Appearance



2.2 LED indicators

GPS LED Indicator - Blue	
Flashing (interval 0.1s)	Searching GPS signal
Solid blue	GPS positioned
OFF	GPS sleep or off

GSM LED Indicator - Green	
Quick flashing (interval 0.1s)	GSM initializing
Slow flashing (flash 0.1s every 2s)	Receive GSM signal normally
Solid green	Connected to GPRS network
OFF	No GSM signal or SIM card

Power Status - Red	
Flashing (interval 0.1s)	Low battery
Slow flashing (interval 2s)	Full charge
Slow flashing (flash 0.1s off 2s)	Normal operating
Solid Red	Charging
OFF	Low battery/Power off

Note:

Defense Status

The device is in defense status if blue, red and green indicator flashed in a loop.

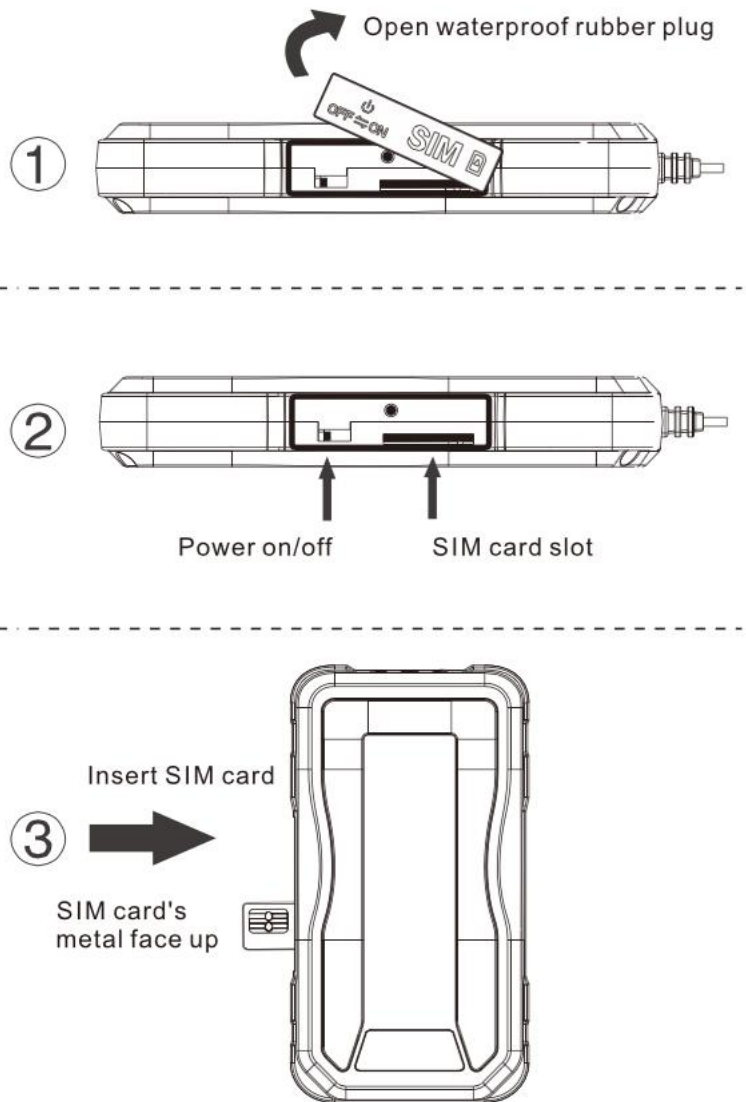
3. Installation

3.1 Install the SIM card

Notice:

SIM should be inserted correctly.

SIM card should have GPRS service.



3.2 Device Line Definition

Picture 1

Picture 1

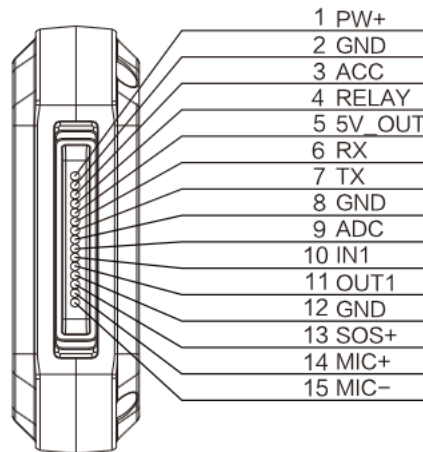


Table 1

Line	Color	Definition	Description
1	Red	PW+	12V/24V positive side of battery
2	Black	GND	12V/24V negative side of battery
3	Orange	ACC	ACC ignition
4	Yellow	RELAY	Relay
5	Red	5V-OUT	External power supply
6	Blue	RX	Data receiving / backup interface
7	Green	TX	Data sending/ backup interface
8	Black	GND	Negative electrode
9	Purple	ADC	Extended Interface
10	Orange	IN1	
11	Yellow	OUT1	
12	Black	GND	SOS button
13	Orange	SOS+	
14	Brown	MIC+	Microphone
15	Black	MIC-	

Relay wiring instruction

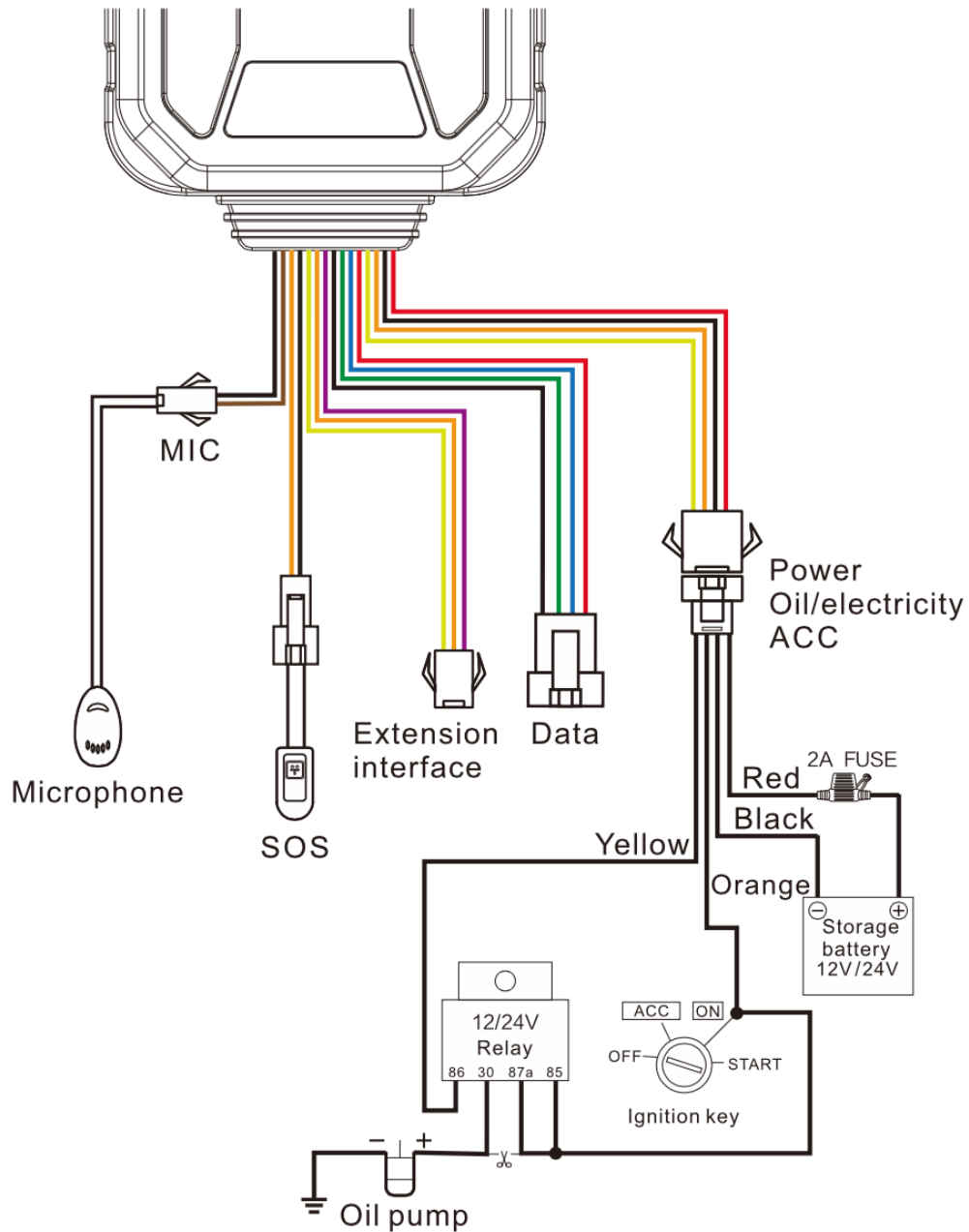
Relay wiring way of oil pump open circuit: On each end of the wire is thin white line (85) and thin yellow line (86). Thin white line (85) connects to the positive side of battery (12V) while thin yellow line (86) connects to the device relay control. There is an oil pump in the vehicle. Cut off the positive line. The positive side of oil pump connects to the close-end of relay.(Thick green line 87a), and

the other side connects to relay's common (green thick 30) .

Notice:

12V relay is standard. The device is suitable for vehicles with 12V battery. If the vehicle has 24V battery, then 24V relay needed.

3.3 Device Wiring Way

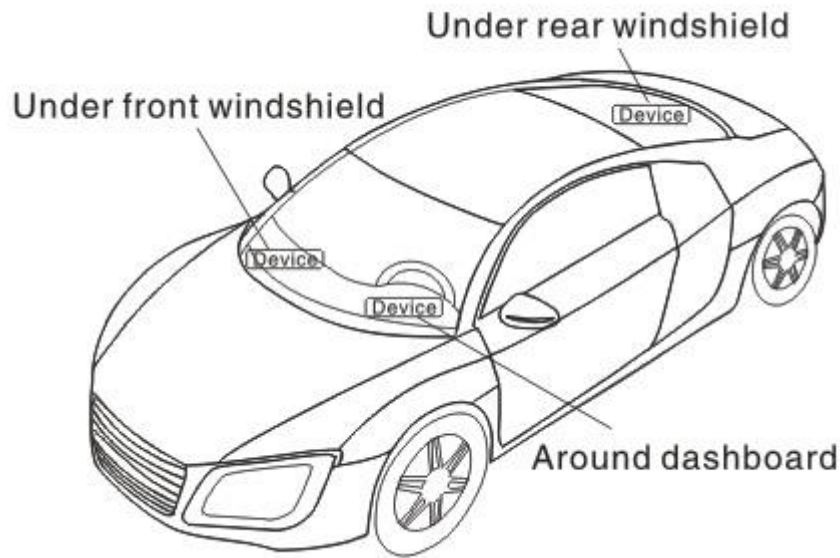


- 1) The standard power supply ranges from 9V to 36VDC. Please use the power cord manufactured by the original factory. Red line means positive side while black line means negative side. During installation, negative side should connect to the ground.
- 2) ACC line (orange) connects to vehicle's ACC, detecting ignition and

flamout.

- 3) Device's oil and electricity control line (yellow) connects to relay's 86. (thin yellow line of relay socket)

3.4 Device Installation



Note:

The device should face up to the sky

Metal thermal barrier or heating layer of the windshield affects the signal.

Please change installation places to receive better signal.

4. Operation of device

Power on/ Power off

Power on: Once insert a valid SIM card and connect all the wires, turn on the device, then Power LED will flash first, During signal searching process, GSM and GPS LED will flash. Once GPS LED keeps solid light, it means the device has been located and it starts to work.

Power off: Just turn off the power switch.

Notice:

When device is charged by external power, please turn on the battery. The battery will connect with the device circuits and its built-in battery will be charged. If battery is OFF, battery can't be charged. The device will power off if no external power supply.

5. Main Functions

5.1 SOS

In emergent case, press SOS for 3s to activate SOS alarm. Then the device will send SOS SMS to preset SOS numbers and then dial the numbers in 3 circles until the call is picked up. Alarm message will also send to platform.

5.2 Power cut-off alarm

When the electricity of device is cut off, it will activate cut-off alarm.

5.3 Low battery alarm

When battery is low, the device will activate low battery alarm.

5.4 Displacement alarm

Device will send movement alarm when vehicle moves out the pre-set distance (when ACC is off and GPS is fixed).

5.5 Vibration alarm (Default ON)

When vehicle vibrates several times, the vibration alarm will be triggered. If no ignition after 3 minutes (ACC OFF), the device will send vibration alarm message immediately.

5.6 Voice monitoring

Use pre-set SOS number to dial the device. If no answering after 10 seconds, device changes to monitoring mode automatically. The caller, on the other hand, can hear the noise inside the vehicle. Device won't monitor when non-SOS number call in.

Notice:

1. Pre-set SOS number is necessary
2. SIM card must have caller ID service
3. No external horn/speaker

5.7 Oil/Electricity cut-off

When vehicle is stolen, oil/electricity cut-off command can be sent by platform, APP or SMS.

Notice:

1. Make sure ACC is correctly connected.
2. When ACC is OFF, command will be executed immediately.
3. When ACC is ON, but GPS is not fixed, command will be postponed.
4. When ACC is ON, GPS is fixed, command will be executed when vehicle speed is less than 20km/h.

5.8 Restore oil/electricity

When alarm is cancelled, user can send restore oil/electricity command by platform, APP or SMS and restore vehicle power.

5.9 Restart device

If GPRS is abnormal (device is offline), user can send SMS command (RESET#) to restart the device. Device will reboot after 20 seconds after receive the command.

6. Platform Operation

Get registered on the designated service platform by authorized dealer, then you can start the tracking service and settings.

6.1 Login service platform

Please login the designated service platform to set and operate the device.

6.2 Download APP

Please download and install the APP in designated website, APP store or Google Play store.

7. Command List

1	Check device status	STATUS#
2	Get device GPS latitude/longitude	WHERE#

3	Check device location in Google Map link	URL#
4	SOS number setting	<p>1, Add SOS number: SOS,A,number 1,number 2,number 3# Example: SOS,A,12342***,134533***,135432***#</p> <p>2, Delete subjected sequence of SOS number: SOS,D,number sequence 1,number sequence 2, number sequence 3# Example: SOS,D,1,2#</p> <p>3, Delete the SOS number: SOS,D,phone number#</p> <p>4, Query SOS number: SOS#</p>
5	GPS data upload time interval	<p>TIMER,T1,T2# T1=5~18000 seconds; ACC ON upload interval; default value: 10 T2=5~18000 seconds; ACC OFF upload interval; default value: 20 (when GPS is on) Example: TIMER,20,20#</p>
6	GPS data upload distance interval	<p>DISTANCE,D# D=0、50~10000 meter; Distance interval; default value: 300, unit: meter;</p>
7	Delayed defense setting	<p>DEFENSE,A# A:1~60 minutes, set delayed defense, default value: 10 minutes</p>
8	Vibration alarm	<p>1, SENALM,ON# 2, SENALM,OFF#</p>
9	Movement alarm (Default OFF)	<p>1, MOVING,ON,R,# R=100~1000; Movement radius, unit: meter Example: MOVING,ON,200,# 2, MOVING,OFF#</p>
10	Power/oil control	<p>RELAY,A# A=0/1; 0: power on, 1: cut off power; default value: 0 Example: RELAY,1#</p>
11	Restart	<p>RESET# Device restart 20 seconds after receiving this command</p>

8. Trouble shooting

If you are having trouble with your device, try these troubleshooting procedures before contacting a service professional.

Problems	Causes	Solutions
Poor signal	The signal waves unable to transmit when use the GPS tracker in the places that have poor signal reception, such as: tall building around or basement.	Using the GPS tracker in the places that have good signal condition.
Unable to boot	Low battery	Charge the device battery
Unable to connect to the network	Poor signal	Using the GPS tracker in the places that have good signal condition.
Unable to locate	Signal shielded or Poor signal	Change the installation place
No power off alarm	Built-in battery is off	Turn it on
Fail to start the car	Power cutoff /ACC abnormal	Restore power/Check ACC
Car stops driving	Abnormal power supply	Connect the device negative electrode to constant power
Offline/Indicators off	Abnormal power supply/Indicators sleep	Check power supply/Press side key to activate indicators
No update of vehicle's location	No GPS positioning	Test the device again/Change installation place
Power on, all light indicators are on for 3 minutes	Overdue / Damaged SIM card	Make a payment/Change SIM card

Warranty instructions and service

1. The warranty is valid only when the warranty card is properly completed, and upon presentation of the proof of purchase consisting of original invoice indicating the date of purchase, model and serial No. of the product. We reserve the right to refuse warranty if this information has been removed or changed after the original purchase of the product from the dealer.
2. Our obligations are limited to repair of the defect or replacement the defective part or at its discretion replacement of the product itself.
3. Warranty repairs must be carried out by our Authorized Service Centre. Warranty cover will be void, even if a repair has been attempted by any unauthorized service centre.
4. Repair or replacement under the terms of this warranty does not provide right to extension or renewal of the warranty period.
5. The warranty is not applicable to cases other than defects in material, design and workmanship.

Maintenance Record

Date		Serviced by	
Product Model			
IMEI Number			
Fault Descriptions			
Comments			

ShenZhen Concox Information Technology CO.,Ltd

Tel: +86 755 2912 1200

Fax: +86 755 2912 1290

E-mail: jason@concox.cn.

Add: 4/F, Building B, Gaoxinqi Industrial Park,
Liuxian 1st Road, No.67 Bao'an District, Shenzhen

www.iconcox.com

FCC Statement

1. This device complies with Part 15 of the FCC Rules. Operation is subject to the following two conditions:

(1) This device may not cause harmful interference.

(2) This device must accept any interference received, including interference that may cause undesired operation.

2. Changes or modifications not expressly approved by the party responsible for compliance could void the user's authority to operate the equipment.

NOTE:

This equipment has been tested and found to comply with the limits for a Class B digital device, pursuant to Part 15 of the FCC Rules. These limits are designed to provide reasonable protection against harmful interference in a residential installation.

This equipment generates uses and can radiate radio frequency energy and, if not installed and used in accordance with the instructions, may cause harmful interference to radio communications. However, there is no guarantee that interference will not occur in a particular installation. If this equipment does cause harmful interference to radio or television reception, which can be determined by turning the equipment off and on, the user is encouraged to try to correct the interference by one or more of the following measures:

Reorient or relocate the receiving antenna.

Increase the separation between the equipment and receiver.

Connect the equipment into an outlet on a circuit different from that to which the receiver is connected.

Consult the dealer or an experienced radio/TV technician for help.

RF Exposure Warning:

To comply with FCC RF exposure requirements, a minimum separation distance of 20cm between user and transmitter include its antenna must be maintained during normal operations.