

www.tuv.com

1.6 User Manual



TAG Heuer Multifunction Bluetooth headset

Table of content:

Welcome.....	2
Content.....	3
Important information	4
Introduction	5
Charging the TAG Heuer Multifunction Bluetooth® headset	6
Usage of charging cradle as portable battery pack.....	7
Switching the TAG Heuer Multifunction Bluetooth® headset	
ON and OFF	8
To initiate pairing	8
Making calls.....	10
Adjusting volume	11
Call waiting	12
Fitting the Ear bud	13
Usage of TAG Heuer Multifunction Bluetooth® headset as mass storage	
device	13
Additional features with some mobile phones	15
Care and maintenance.....	16
Guidelines for safe use	17

Welcome:

Congratulations on your purchase of a TAG Heuer communication instrument. You have made an excellent choice selecting the ultimate in innovation, quality and endurance - high-performance sports criteria that have been hallmarks of TAG Heuer's commitment to its craft since 1860.

Each TAG Heuer communication instrument is built to meet the most exacting requirements. We paid the very same careful attention to detail on this communication instrument from design, conception to finishing that we constantly do on our watches for more than 140 years. The materials used in our communication instrument make them exceptionally resilient, even when used under the most rigorous conditions. Before a new TAG Heuer product is launched it is put through 57 reliability and quality tests.

With its modern, unique and timeless design, your new TAG Heuer communication instrument combines Swiss quality horology tradition with technology. We hope it will bring you complete satisfaction.

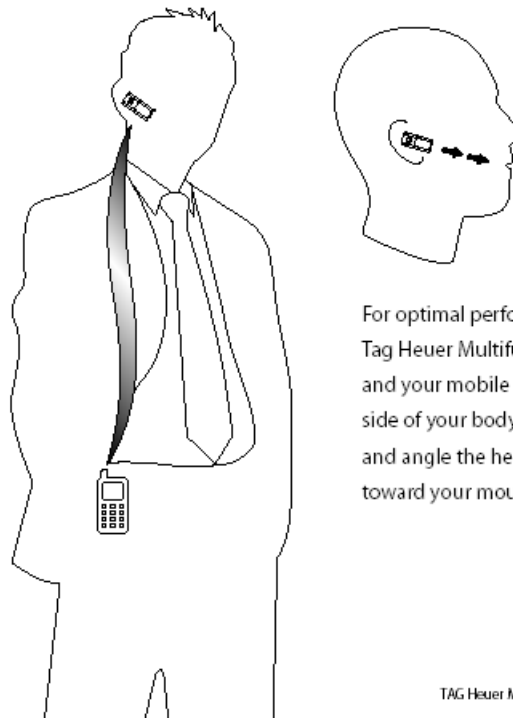
English

TAG Heuer Multifunction Bluetooth® headset 1 2

TAG Heuer Multifunction Bluetooth® headset Content

English

- 1 TAG Heuer Multifunction Bluetooth® headset
 - 1 TAG Heuer charging cradle with 4G memory storage
 - 1 international warranty leaflet
 - 1 user manual
 - 1 multi-plug travel charger
 - 3 ear buds
 - 1 car charger
 - 1 USB cable
- The packaging contents may vary in accordance with regional regulations.



For optimal performance, wear your Tag Heuer Multifunction Headset and your mobile phone on the same side of your body or within line of sight and angle the headset so that it points toward your mouth.

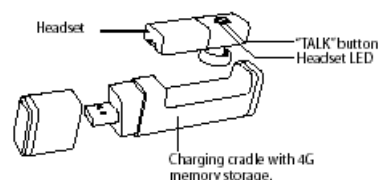
TAG Heuer Multifunction Bluetooth® headset 1 4

Introduction

The TAG Heuer Multifunction Bluetooth® headset is a wireless headset based on the Bluetooth® technology. The USB charging cradle is compatible with USB 2.0 for high speed transfer. Providing memory storage and charging of your headset, as well as a portable battery pack.

The TAG Heuer Multifunction Bluetooth® headset has only one button:
 • "TALK" button (main button)

TAG Heuer Multifunction Bluetooth® headset layout



Before using the TAG Heuer Multifunction Bluetooth® headset

• The headset must be charged for about 4 hours continuously until the red indicator light turns off. Please refer to the "Charging the TAG Heuer Multifunction Bluetooth® headset" section of this manual.

• To pair the headset with a mobile phone. Please refer to the "Pairing the TAG Heuer Multifunction Bluetooth® headset" section of this manual.

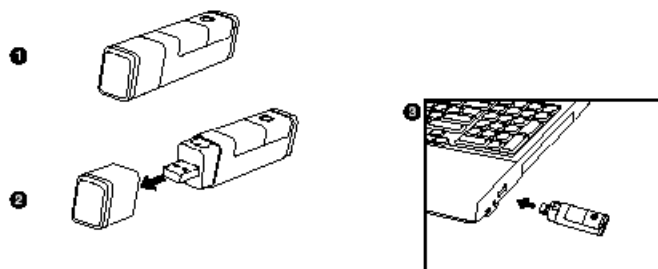
Charging the TAG Heuer Multifunction Bluetooth® headset

When the indicator light on your TAG Heuer Multifunction Bluetooth® headset flashes in red and a low tone beep, your headset needs to be recharged.

Put headset into the charging cradle carefully. Place the headset into the slot provided on the cradle. Remove the cap from the main body. Then plug the USB connector to a powered USB slot.

During the charge, the red Bluetooth indicator is switched on. The indicator light will turn off once the charge is complete.

During subsequent charges, the charging should take approximately 2 hours.

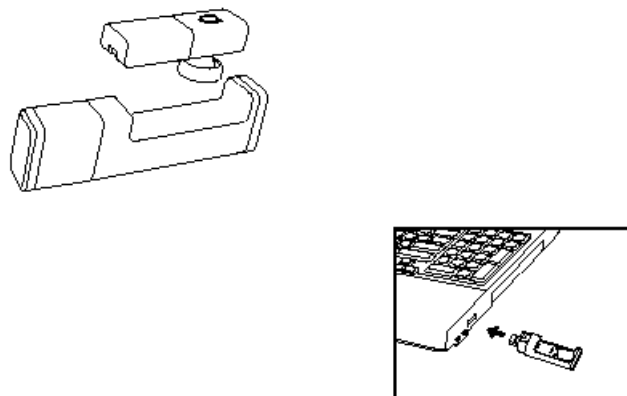


TAG Heuer Multifunction Bluetooth® headset 1 6

Usage of charging cradle as portable battery pack

Once your headset is low on battery, recharge it by placing it into the charging cradle which provides a extra power reserve. This function can be used without a powered USB slot if the charging cradle has been charged prior to recharging your headset.

When the charging cradle is used as a USB, it automatically charges the battery pack within.



7 | TAG Heuer Multifunction Bluetooth® headset

Switching the TAG Heuer Multifunction Bluetooth® headset ON and OFF

Switching TAG Heuer Multifunction Bluetooth® headset ON

To switch on your TAG Heuer Multifunction Bluetooth® headset, press the TALK button for about 3 seconds until the blue indicator light is turned on. A beep (3 tones) can be heard in the speaker.

Switching TAG Heuer Multifunction Bluetooth® headset OFF

To switch off your TAG Heuer Multifunction Bluetooth® headset, press the TALK button for about 5 seconds until the red indicator light is turned on. A beep (3 tones) can be heard in the speaker.

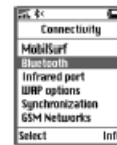
Pairing the TAG Heuer Multifunction Bluetooth® headset

Before using the TAG Heuer Multifunction Bluetooth® headset, it must be paired with a Bluetooth® mobile phone.

Pairing is the process of linking 2 Bluetooth® devices, so that they can communicate.

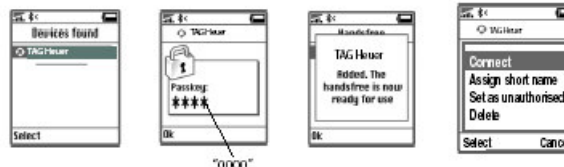
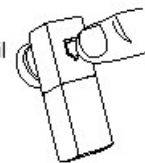
To initiate pairing:

- ❶ Place the TAG Heuer Multifunction Bluetooth® headset and your mobile phone within 0.3 meter (1 foot) from each other.
- ❷ Switch on your mobile phone and select its Bluetooth® discover mode (refer to the Bluetooth® mobile phone user manual).



TAG Heuer Multifunction Bluetooth® headset 18

- ❸ When the TAG Heuer Multifunction Bluetooth® headset is switched off, press the TALK button for about 5 seconds until the indicator light flashes red and blue alternately. A beep tone can be heard in the speaker.
- ❹ Once the mobile phone detects the headset, a "TAG Heuer" message will be displayed. Follow the mobile phone instructions to accept the pairing. The PIN code (or passkey) is 0000, then press "yes" or "ok".
- ❺ For some mobile phones, you may need to select "Connect".



If you haven't started the discovery mode within 5 minutes, the headset will go on standby mode. Please switch off your headset and start the pairing again.

Depending on the phone's model used with this headset, an option to connect automaticall connect your BT headset to phone can be selected

Making calls

Mobile phone with voice recognition

- Make sure the voice recognition function on your mobile is activated and your voice tags have been recorded with the mobile phone. To enter these, please refer to your mobile phone's manual.
- When there is no incoming or active call, press once on the TALK button
- Wait for the audio signal sent by the mobile phone (generally a short tone).
- Speak the name of person you wish to call.

*This function may not be available on some mobile phones.

Mobile phone without voice recognition

- Make sure both the headset and the mobile phone are ON and in stand-by mode.
- Dial the number on the mobile phone keypad and make the call, in approximately 2 seconds the audio connection will be established.

Answering calls

When the headset rings, press once on the TALK button to take the call.

Ending calls

Press once on the TALK button to end an active call.

TAG Heuer Multifunction Bluetooth® headset | 10

English

Adjusting volume

You can adjust the volume directly from mobile phone.

Muting the microphone

To mute the microphone during an active call

Mute the microphone during an active call using your mobile phone.

To end the mute function

When the microphone is muted, resume the microphone during an active call using your mobile phone.

Call waiting

A call waiting alert will be heard when there is an incoming call during your conversation. To accept the call, press about 3 seconds on the TALK button. The current call will be on hold.

To end the active call and take the held call, press 2 seconds on the TALK button.

*This function may not be available, depending on your mobile phone.

However, you can always answer the second call from your mobile phone keypad.

Placing / retrieving an active call in hold

Press about 2 seconds on the TALK button to place the single active call in hold.

Press again about 2 seconds on the TALK button to retrieve the held call.

TAG Heuer Multifunction Bluetooth® headset | 12

Fitting the Ear bud

3 different sizes of ear bud are included in the pack to suit your ear size. You can adjust the ear bud position that you feel the most comfortable.

To replace the ear bud, remove the speaker cover by pulling gently out from the speaker.



Place the ear bud back onto the speaker by inserting the bottom part first.



Usage of TAG Heuer Multifunction Bluetooth® headset as mass storage device

To use the charging cradle as mass storage device, remove the cap and plug the charging cradle into the computer directly in a USB slot.

When you connect the charging cradle to your computer, it will be detected automatically for most operation systems. If not, please follow the prompt messages and procedures to install the driver.

System requirements

- TAG Heuer Multifunction Bluetooth® headset works with default driver from Windows ME/2000/XP/Vista and Mac OS X.
- Windows 98/2000(SP1/SP2) and Mac OS 9 are supported by vendor driver from Alcor.
- Linux operating systems.

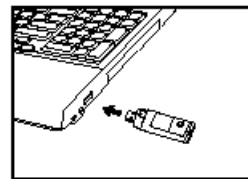
it is compatible with USB 2.0 for high speed format.

Disconnecting

In order to keep data integrity, remove the TAG Heuer Multifunction Bluetooth® headset from the USB following the steps below:

1. In the notification area, right-click on the hot plug icon.
2. Select TAG Heuer Multifunction Bluetooth® headset and click STOP
3. Unplug the TAG Heuer Multifunction Bluetooth® headset after Windows notifies device is stopped and that it is safe to remove.

• **Warning:** To avoid losing data, never remove or disconnect the TAG Heuer charging cradle when the data is transferring.



TAG Heuer Multifunction Bluetooth® headset | 14

Additional features with some mobile phones

Rejecting a call

Press the TALK button for about 2 seconds to reject a call.

Redial the last number

When there is no incoming or active call, press the TALK button for about 2 seconds until you hear a beep.

Troubleshooting guide

For any problem that cannot be solved with this manual, please switch off the headset and the mobile phone. If the problem cannot be solved after switching the headset and the mobile phone on again, please refer to website for more information on after sales services.

Care and maintenance

English

- Keep the headset and charging cradle dry. Exposure to humidity and liquids will damage the device.
- Do not use or store the headset in dusty, dirty areas.
- Keep the headset and its parts out of the reach of small children.
- Do not expose your headset to extreme temperatures. Temperature range: 0-40C.
- Do not expose your headset to fire or open flames.
- Do not drop or try to alter the shape of your headset.
- Do not try to disassemble your headset and main body. Only authorized after sales services are allowed to repair the headset. Refer to website for more information on after sales services.

TAG Heuer Multifunction Bluetooth® headset | 16

English

Safety points

Please refer to the guidelines prior to using your headset

- The volume level of the Bluetooth® headset may vary, depending on your mobile phone. Before using your headset for the first time, adjust the headset volume to the lowest, then increase the volume gradually until you reach to an acceptable level.
- High levels of volume may result in hearing loss, avoid using the headset at high volume continuously. If you experience ringing in your ears or muffled speech, consult your doctor immediately and stop using the headset.
- Check the regulation in your area if you plan to use your headset while driving.
- Turn off your headset before boarding an airplane.

Important Information:

- If your headset is fully charged, the red indicator light will not turn on when plugged into the charger.
- If you leave your headset battery empty for an extended period of time, it could excessively discharge the battery. In this case, charge your headset for 2 hours or more until the battery recovers and recharges completely. When you first charge the headset after prolonged storage, it may take few minutes for the red indicator light to turn on.
- Battery life depends on signal strength, usage, and many other factors. Battery has limited recharge cycles.
- Battery life and charge cycles vary by use and settings. To maximize battery life time, it is recommended to recharge your headset only when the battery is low. Do not charge your headset for more than 10 hours.
- The use of any other charger will automatically suspend the warranty. It is strictly forbidden and can be very dangerous.
- **Warning: To avoid losing data, never remove or disconnect the TAG Heuer charging cradle when the data is transferring.**

* Please refer to the 'Disconnecting' section of this manual

English

TAG Heuer Multifunction Bluetooth® headset | 18

English

FCC/ Industry Canada Notice

This device complies with Part 15 of the FCC rules. Operation is subject to the following two conditions: (1) This device may not cause harmful interference. (2) This device must accept any interference received, including interference that may cause undesired operation.

In compliance with Industry Canada regulations, technical specifications have been provided in a declaration of conformity. This does not imply that Industry Canada approved the equipment.

Caution: Changes or modifications to this Bluetooth® headset not expressly approved by the party responsible for compliance could void the user's authority to operate it.

This equipment has been tested and found to comply with the limits for a Class B digital device, pursuant to part 15 of the FCC Rules. These limits are designed to provide reasonable protection against harmful interference in a residential installation. This equipment generates, uses and can radiate radio frequency energy and, if not installed and used in accordance with the instructions, may cause harmful interference to radio communications. However, there is no guarantee that interference will not occur in a particular installation. If this equipment does cause harmful interference to radio or television reception, which can be determined by turning the equipment off and on, the user is encouraged to try to correct the interference by one or more of the following measures:

- Reorient or relocate the receiving antenna.
- Increase the separation between the equipment and receiver.
- Connect the equipment into an outlet on a circuit different from that to which the receiver is connected.
- Consult the dealer or an experienced radio/TV technician for help.

Industry Canada

This Class B digital apparatus complies with Canadian ICES-003.

Cet appareil numérique de la classe B est conforme à la norme NMB-003 du Canada.

Note on environmental protection:



After the implementation of the European Directive 2002/96/EU in the national legal system, the following applies:

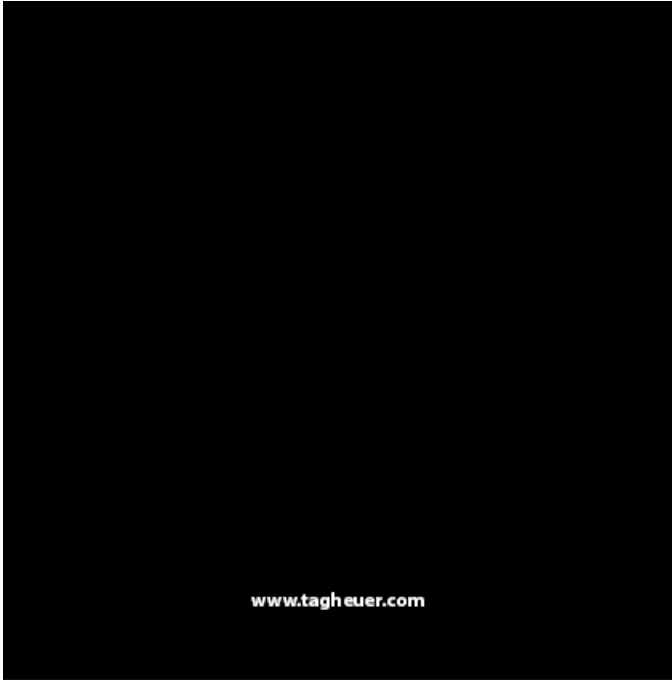
Dispose of batteries according to local regulations. Do not dispose as household waste. Consumers are obliged by law to return electrical and electronic devices at the end of their service lives to the public collecting points set up for this purpose or point of sale. Details to this are defined by the national law of the respective country. This symbol on the product, the instruction manual or the package indicates that a product is subject to these regulations. By recycling, reusing the materials or other forms of utilising old devices, you are making an important contribution to protecting our environment.

Certification and Safety approvals

This product is CE marked according to the provisions of the R&TTE Directive (99/5/EC).

We declare that this product is in compliance with the essential requirements and other relevant provisions of Directive 1999/5/EC.

For further information, please refer to website for more information.



www.tagheuer.com