

1.6 User Manual



WELCOME

Thank you for purchasing a Bluetrek Bluetooth® headset. Before using this product, please charge your headset for 1.5 hours and read the safety and quick start guide carefully.

Your Bluetrek headset comes with a 1-year warranty. Please keep your sales receipt on file as proof of purchase should you ever need warranty service.

GET ASSISTANCE

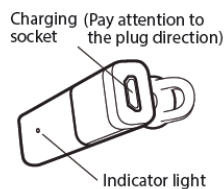
We would be happy to help you. Just e-mail: support@bluetrek.com

CHARGING

Your Mini+ headset performs best when fully charged.

A full charge takes just 1.5 hours and will provide up to: 7 hours of talk time, 5.5 hours of multimedia streaming or 4.5 days of standby time.

The indicator light will remain red while the Mini+ is charging. When fully charged, the indicator light will change from red to blue. When you hear a low-tone beep in your headset at regular intervals, and the indicator light flashes in red, your headset needs to be recharged.



Use the included microUSB to USB cable or a 5V wall charger (200mA or more)

Note:

The lifetime of the battery will be significantly reduced if your device is left uncharged for a long period. We recommend that you fully recharge your device at least once a month.

English

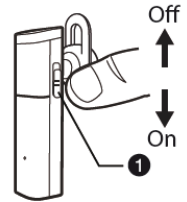
BLUETREK MINI+ 1 1

SWITCHING ON/OFF

1 Power Switch

Slide the power switch to turn the Mini+ on or off.

To save power, your Mini+ will automatically turn off when it loses connection with your mobile phone for more than 8 minutes. To wake the headset, slide the power switch off and then on again.

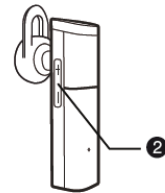


ADJUSTING VOLUME

2 VOL+/- Button

To increase the volume during an active call, press the "VOL+" button on the headset.

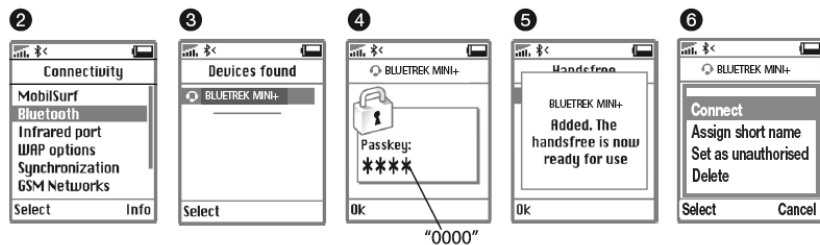
To decrease the volume during an active call, press the "VOL-" button on the headset.



2 | BLUETREK MINI+

PAIRING

- 1 Make sure your phone is on and navigate to your phone's Bluetooth® menu to search for or add a new Bluetooth device (refer to your phone's user manual if you need help finding this menu).
- 2 Switch on Bluetrek Mini+, press and hold the TALK Button for approx. 5 seconds until blue and red light flash alternately.
- 3 Place the Bluetrek Mini+ and your mobile phone within 0.3 meter (1 foot) from each other.
- 4 "BLUETREK MINI+" will be displayed on your mobile phone.
- 5 Follow the phone instructions to accept the pairing. The PIN code (or passkey) is 0000, then press "yes" or "ok".
*If your phone supports Secure Simple Pairing (SSP), PIN code is not required.
- 6 For some phones, you may need to select "Connect".
* If pairing is successful, the indicator light will switch to blue and flash once every 5 seconds.

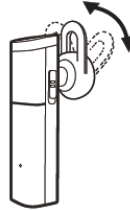


BLUETREK MINI+ | 3

English

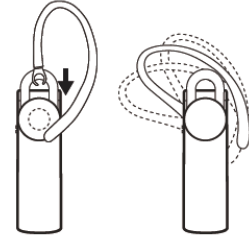
EARBUD

The earbud can be rotated around the speaker for optimal comfort.



EAR HOOK

Use the optional earhook if you would like to further secure the headset on your ear.



MAKING CALLS

Using the mobile phone key pad

- Make sure the headset is turned on and connected to your phone.
- Dial the number on your phone's keypad and place the call. The call audio will automatically transfer to your headset within a few seconds.

Using the voice recognition function of your mobile phone*

- Make sure the voice recognition function on your mobile is activated and your voice tags have been recorded on the phone. Please refer to your phone manual.
- When there is no incoming or active call, press on the TALK button for 2 seconds.
- Wait for the audio signal from the mobile phone (generally a short tone).
- Say the name of the person you wish to call.

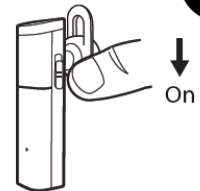
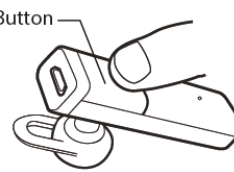
*This function may not be available on some phones, please check with your phone manufacturer for further details.

4 | BLUETREK MINI+

ANSWERING CALL

If the headset is powered on: press the TALK Button once.
If the headset is powered off: switch the headset on, the call will be answered automatically.

TALK Button



English

ENDING CALL

Press the TALK Button once.

REJECTING CALL

Press the talk button when the phone rings for about 2 seconds to reject a call.

CALL THE LAST DIALLED NUMBER

Double tap the TALK button when there is no incoming or active call.

BLUETREK MINI+ 1 5

LISTENING TO MUSIC

Mini+ is capable of streaming music from a mobile phone or other Bluetooth® devices that support the A2DP profile. Once you have paired your Mini+ with your device, use your device to play, pause, stop, skip, forward and backward. If you receive a call while streaming music, the music will automatically pause and you can use the headset to answer or reject the call. Once you end or reject the call, the music should automatically resume. On some devices you may have to press 'play' to start the music again.

MULTI-POINT FUNCTION

Connecting with two Bluetooth enabled devices simultaneously.

Enable the multi-point function

1. Pair the headset to the first device (Please refer to "pairing" section).
2. Press and hold the TALK button for 5 seconds to enter into pairing mode and then pair it to the second device (Please refer to "pairing" section).
3. Slide the power switch off and then on again. The two devices will be connected simultaneously.

Answer a call while talking on the other paired phone

- To answer the second call and put the current call on hold, the TALK button twice in a row.
- To answer the second call and terminate current call, press the TALK button once.
- To reject the second call, reject from mobile phone directly.

6 | BLUETREK MINI+

MUTING THE MICROPHONE

To mute the microphone during an active call

During an active call, press and hold the VOL+ or VOL- button for approximately 2 seconds. A periodic tone can be heard in the speaker.

To end the mute function

When the microphone is muted, press and hold the VOL+ or VOL- button for approximately 2 seconds until the periodic tone is end.

RE-CONNECTION

Mini+ will reconnect to your mobile phone automatically if the Bluetooth connection is interrupted for less than 3 minutes. If connection is interrupted for 3 to 8 minutes, press the TALK button once to reconnect with your phone.

To save power, your Mini+ will automatically turn off when it loses connection with your mobile phone for more than 8 minutes. To wake the headset, slide the power switch off and then on again.

English

TROUBLESHOOTING/RESET TO FACTORY SETTING

If the headset does not seem to be operating normally, place it on the charger for a full charge. If that does not correct the problem, try resetting the headset.

To reset your headset:

1. Switch your headset on.
 2. Press and hold the TALK and VOL+ and VOL- buttons for 5 seconds until the red LED light flashes.
 3. Wait for 7 seconds. The headset will reset and enter into pairing mode.
- After resetting your headset, you will need to pair your device(s) again.

MORE INFORMATION & SUPPORT

Some features of your Mini+ headset may not work with your device if it does not support the Bluetooth handsfree, headset, or A2DP profiles. Please check with the device manufacturer for the Bluetooth profiles supported by your device or visit our website at www.bluetrek.com to check product compatibility and frequently asked questions.

If you have any questions, please contact us at support@bluetrek.com before returning the product to your retailer.

Thank you for choosing a **BLUETREK®** product

8 | BLUETREK MINI+



BLUETREK
award winning wireless innovation

www.bluetrek.com

iPhone is a trademark of Apple Inc.
702-00225-01

English

Important safety and operational information

Please read the following information before using the headset. Additional warnings may be present on the product, packaging or in the user manual.



- For optimal performance, wear your headset and your mobile phone on the same side of your body or within line of sight and angle the headset so that it points toward your mouth.
- For better performances, avoid the microphone touching your jaw or face. The face will absorb some of the transmission output power and reduce the range. It also leads to possible noise in audio. Use hook or not to have the microphone 1cm from your jaw.

Warnings

- Using Bluetooth headset at high volume level and noisy background can potentially cause hearing loose.
- The volume level of the Bluetooth® headset may vary, depending on your mobile phone. Before using your headset for the first time, adjust the headset volume to the lowest, then increase the volume gradually until you reach to an acceptable level.
- High levels of volume may result in hearing loss, avoid using the headset at high volume continuously. If you experience ringing in your ears or muffled speech, consult your doctor immediately and stop using the headset.
- Check local laws regarding use of a mobile phone and earpiece while driving. If you use the earpiece while driving ensure your attention and focus remain on driving safely.
- Observe all signs and instructions that require an electrical device or RF radio product to be switched off in designated areas, such as gas/refueling stations, hospitals, blasting areas, potentially explosive atmospheres, or aircraft.

Charge warnings

- For your first time use, please charge your headset for 3-4 hrs until the red indicator light turns off.
- To maximize battery lifetime, it is recommended to recharge your headset to full capacity only when the battery is low, since a battery has a life time of about 350 charging cycles.
- If you leave your headset battery empty for an extended period of time, it could excessively discharge the battery. In this case, charge your headset for 3 hours or more until the battery recovers and recharges completely. When you first charge the headset after prolonged storage, it may take few minutes for the red indicator light to turn on.
- It is recommended to full charge your headset before you store it for long periods of time without use.

- If your headset is fully charged, the red indicator light will not turn on when plugging into the charger.
- Do not over charge your headset for more than 10 hours.
- The use of any other charger will automatically suspend the warranty. It is forbidden and can be dangerous.
- Ensure that the voltage rating corresponds to the local mains or power supply you intend to use.
- Optimal handling may not always be practical in real life. Deviations from the ideal are acceptable but will lower the life expectancy of the battery to some degree.

Others warnings

- Do not drop or try to alter the shape of your headset.
- Do not expose your headset to liquid, moisture, fire, open flames and extreme temperatures. Operating and storage temperature is 0°C to +40°C (32°F to +104°F).
- Keep your headset away from dust and dirt.
- Do not try to disassemble your headset. Service and Maintenance can only be performed by authorized dealers.
- Do not let children play with your headset, since it contains small parts that could become detached and create a choking hazard. Keep all products, cords, and cables away from children. As with all corded products, there is a danger of strangulation if a cord should become wrapped around your neck.
- Install and use earbuds in accordance with the instructions provided. Do not force the speaker and earbuds down the ear canal. If either becomes lodged in the ear canal, seek medical attention immediately.


FCC/ Industry Canada Notice

This device complies with Part 15 of the FCC rules. Operation is subject to the following two conditions: (1) This device may not cause harmful interference. (2) This device must accept any interference received, including interference that may cause undesired operation.

In compliance with Industry Canada regulations, technical specifications have been provided in a declaration of conformity. This does not imply that Industry Canada approved the equipment. Caution: Changes or modifications to this Bluetooth® headset not expressly approved by the party responsible for compliance could void the user's authority to operate it.


Certification and Safety approvals

This product is CE marked according to the provisions of the R&TTE Directive (99/5/EC). We declare that this product is in compliance with the essential requirements and other relevant provisions of Directive 1999/5/EC. For further information, please refer to website.

 Bluetooth® is a trademark owned by Bluetooth SIG, Inc. and is used by the manufacturer under license.

 **BLUETREK®** For more information, please visit our website : www.bluetrek.com


Note on environmental protection:

After the implementation of the European Directive 2002/96/EU in the national legal system, the following applies: Electrical and electronic devices may not be disposed of with domestic waste. Consumers are obliged by law to return electrical and electronic devices at the end of their service lives to the public collecting points set up for this purpose at point of sale. Details to this are defined by the national law of the respective country. This symbol on the product, the instruction manual or the package indicates that a product is subject to these regulations. By recycling, reusing the materials or other forms of utilizing old devices, you are making an important contribution to protecting our environment.