

## 1.6 User Manual

**BLUETREK SPEAKY**  
The most friendly car kit!

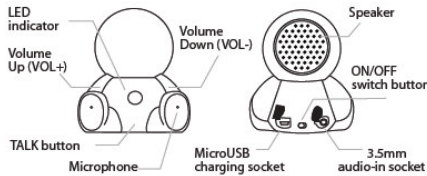
**WELCOME**

Thank you for purchasing the Bluetrek carkit. Before using this product, please charge your carkit for 2 hours and read the safety and quick start guide carefully.

**GET ASSISTANT**

Consumer Care and Technical Support  
US & Canada : care@bluetrek.com  
Toll free number for US only : 1-888-927-BLUE  
(Operation hours : Central Time Zone 8:00am- 5:30pm)  
Others : support@bluetrek.com

### ABOUT SPEAKY



### CHARGING

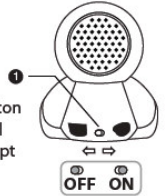
When you hear the voice prompt "please charge me up!", your SPEAKY needs to be recharged. SPEAKY can be charged by the USB cable or with the Car Charger provided in the pack, or by any standard MicroUSB plug.

**NOTE:**  
-SPEAKY is Using Universal MicroUSB socket, hence can be used other share cable from other manufacturer.  
-To avoid any system conflict we recommend SPEAKY switched off before charging when battery is extremely low.

### SWITCHING ON/OFF

#### 1 ON/OFF switch button

**ON**  
Slide the Mechanical ON/OFF button to the right. The blue indicator will begin to flash and the voice prompt "Hi what's up?" will be heard.



#### OFF

Slide the Mechanical ON/OFF button to left. The red indicator light will flash once and voice prompt "Bye bye" will be heard.

#### AUTOMATIC ON/OFF

SPEAKY enters sleep mode automatically when it loses connection with your mobile phone for more than 5 minutes. It switches on automatically when the build-in motion sensor is triggered, e.g. when you open the door of your car. The automatic power on function can be de-activated by switching off the carkit mechanically.

### VOICE PROMPT

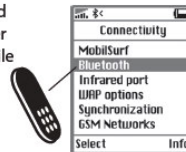
The following is a comprehensive list of the available voice prompts.

Voice Prompts	Car Kit Operation
Hi, What's up?	Power On
I am ready to pair!	Enter Pairing Mode
Now you can use your phone!	Pairing Successful
Where is your phone?	Pairing Failed
Ready to speak!	Connected
I lost your phone!	Disconnected
Calling last number	Last Number Redial
Call over	End Of Call
Please charge me up!	Low Battery
Bye bye!	Power Off

### PAIRING

1 Place the SPEAKY and your mobile phone within 0.3 meter (1 foot) from each other.

2 Switch on your phone and select Bluetooth® discover mode (refer to your mobile phone user manual).

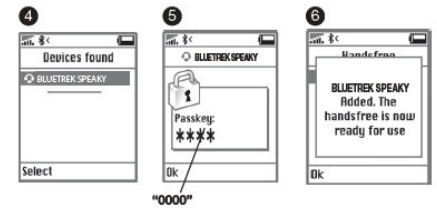


3 Switch on SPEAKY, press and hold the TALK button for about 3 seconds until the indicator light flashes Red & Blue alternately and the pairing voice prompt ("I am ready to pair!") can be heard from the speaker. If SPEAKY is switched on for the first time, it will go to pairing mode automatically.



4 Once your mobile phone detects the SPEAKY, a "BLUETREK SPEAKY" message will be displayed on the screen.

5 Follow the phone instructions to accept the pairing. The PIN code (or passkey) is 0000. If your phone supports Secure Simple Pairing (SSP), there is no need to enter a PIN code.



For some phones, you may need to select "Connect" after paired (refer to your mobile phone user manual).

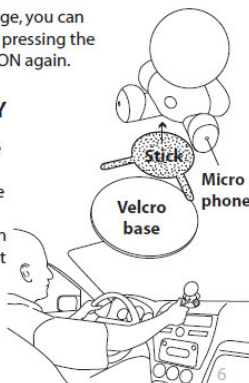
**NOTE:** If pairing is not completed within 5 minutes, the car kit will be switched off automatically. You must then power on your SPEAKY and start the pairing again.

### RE-CONNECTION

The car kit attempts to reconnect for 3 minutes if your mobile is out of range. If you move back in range, you can manually reconnect by pressing the TALK button or Switch ON again.

### BASE FOR SPEAKY

2 sets of Velcro base are provided in the pack. Stick one side under the Speaky and the other side (the base) within an arm's length from you at driving position\*. Attach SPEAKY to the base with it's feet pointing at you.



\* approximate 60-70cm

### MAKING CALLS

Dial the number on the phone's keypad or use voice recognition if your phone is equipped with this function.

### VOICE DIAL FROM BLUETREK SPEAKY

Make sure the voice recognition function on your mobile is activated and your voice tags have been recorded with the phone (refer to your mobile phone user manual). Press once the VOL + and Vol - together to activate the voice recognition function on your phone. \*This function may not be available on some phones.

### CALL WAITING

When you hear a call waiting alert while you are on a call, press once the TALK button to accept the second call and end the current call, or double press on the TALK button to accept the second call and place the current call on hold.

To switch between an active call and on hold call, double press the TALK button.

To end the active call and take the hold call, press once on the TALK button. This function may not be available on some phones.

### OTHER CONTROL

Function	Operation
Answer/End Call	Press once the TALK Button
Reject Call	Press the TALK Button for 2 seconds
Redial	Double press the TALK Button
Call Transfer	Double press the VOL + and VOL - button
Volume Adjust	Press once the VOL + button for volume up and VOL - button for volume down
Mute/Unmute the microphone	Press and hold the VOL + button or VOL - button for 2 seconds

### LISTENING TO MUSIC

If your mobile phone supports A2DP profile, you can use the SPEAKY car kit to listen to the music stored in your phone when the two devices are connected.

Also SPEAKY can be your mini-portable speaker when connected to an audio device at the 3.5mm jack located at the back.

### RESET

If the SPEAKY fails to function normally, please reset it by switching on your car kit, then press the TALK button together with VOL + and Vol - button for about 5 seconds.

\*Reset the headset will delete all pairing set ups, you will need to pair the devices again.

### MORE INFORMATION & SUPPORT

Please contact us at support@bluetrek.com for any question, we will help you through any difficulty you may have.

9

#### Important safety and operational information

Please read the following information before using the car kit. Additional warnings may be present on the product, packaging or in the user manual.

- To reduce interference, it is best to place your mobile phone and car kit without any obstacles in-between.
- For better performances, avoid covering or blocking the microphone and speaker area of the car kit with any objects, whilst making sure the microphone is pointing toward the user for best reception.
- For ease of use, securely place the car kit inside the car where it can be easily reached by the user. We recommend within an arm length distance facing from you at driving position.

#### Warnings

- Using Bluetooth carkit at high volume level and noisy background can potentially cause hearing loose. If you experience ringing in your ears or muffled speech, consult your doctor immediately and stop using the device.
- The volume level of the Bluetooth® car kit may vary, depending on your mobile phone. Before using your car kit for the first time, adjust the car kit volume to the lowest, then increase the volume gradually until you reach to an acceptable level.
- Check local laws regarding use of a mobile phone and carkit while driving. If you use the carkit while driving ensure your attention and focus remain on driving safety.
- Observe all signs and instructions that require an electrical device or RF radio product to be switched off in designated areas, such as gas/refueling stations, hospitals, blasting areas, potentially explosive atmospheres, or aircraft.

#### Charge warnings

- For your first time use, please fully charge your carkit (refer to the manual).
- The lifetime of the battery will be significantly reduced if your device is left uncharged for a long period. Bluetrek recommends that you fully recharge your device at least once a month to keep the battery performance.
- To maximize battery life time, it is recommended to recharge your carkit to full capacity only when the battery is low, since a battery has a life time of about 350 charging cycles.
- Do not over charge your car kit for more than 10 hours.
- The use of any other charger will automatically suspend the warranty. It is forbidden and can be dangerous.
- Ensure that the voltage rating corresponds to the local mains or power supply you intend to use.
- Optimal handling may not always be practical in real life. Deviations from the ideal are acceptable but will lower the life expectancy of the battery to some degree.

10

#### Others warnings

- Do not drop or try to alter the shape of your car kit.
- Keep your car kit away from dust and dirt.
- Do not expose your headset to liquid, moisture, fire, open flames and extreme temperatures. Operating and storage temperature is 0°C to +60°C (32°F to +140°F)
- Do not try to disassemble the product. Service and Maintenance can only be performed by authorized dealers.
- Do not let children play with your car kit, since it contains small parts that could become detached and create a choking hazard. Keep all products, cords, and cables away from children. As with all corded products, there is a danger of strangulation if a cord should become wrapped around your neck.

#### Certification and Safety approvals

This product is CE marked according to the provisions of the R&TTE Directive (99/5/EC). We declare that this product is in compliance with the essential requirements and other relevant provisions of Directive 1999/5/EC. For further information, please refer to website.

#### FCC/ Industry Canada Notice

This device complies with Part 15 of the FCC rules. Operation is subject to the following two conditions: (1) This device may not cause harmful interference. (2) This device must accept any interference received, including interference that may cause undesired operation. In compliance with Industry Canada regulations, technical specifications have been provided in a declaration of conformity. This does not imply that Industry Canada approved the equipment.

Caution: Changes or modifications to this Bluetooth® car kit not expressly approved by the party responsible for compliance could void the user's authority to operate it.

Bluetooth® is a trademark owned by Bluetooth SIG, Inc. and is used by the manufacturer under license.

For more information, please visit our website: www.bluetrek.com

**Note on environmental protection:** After the implementation of the European Directive 2002/96/EU in the national legal system, the following applies: Electrical and electronic devices may not be disposed of with domestic waste. Consumers are obliged by law to return electrical and electronic devices at the end of their service lives to the public collecting points set up for this purpose or point of sale. Details to this are defined by the national law of the respective country. This symbol on the product, the instruction manual or the package indicates that a product is subject to these regulations. By recycling, reusing the materials or other forms of utilizing old devices, you are making an important contribution to protecting our environment.

11