

# **Annex no. 5**

# **Functional Description / User Manual**

**User Manual / Functional Description**

**of the**

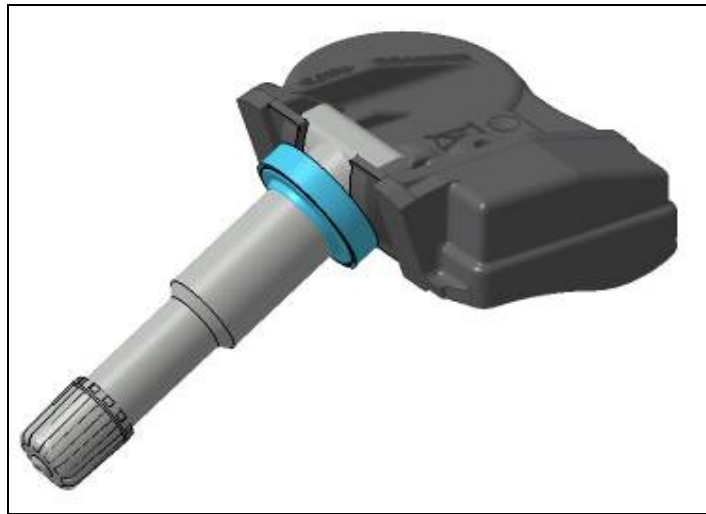
**Continental**

**Tire Pressure Generation 1C wheel unit**

**Type**

**ASK 433.92MHz S180052032**

## 5. PICTURE



## 6. LABEL DESIGN USA (433,92 MHz)

**Continental**  
**S180052032**  
**FCC ID:KR5S180052032**

### **Entry Owners Manual USA:**

#### **NOTE**

This device complies with part 15 of the FCC Rules and RSS-210. Operation is subject to the following two conditions: (1) This device may not cause harmful interference, and (2) this device must accept interference received, including interference that may cause undesired operation.

#### **CAUTION**

Changes or modifications not expressly approved by the manufacturer could void the user's authority to operate the equipment.

**6.1 Europe:**  
**Continental**  
**S180052032**

