



Wireless 2, 3, and 6-Button Keypad Installation Guide



Supported Models and Requirements

- C4-KP2-Z-W Wireless 2-Button Keypad (White)
- C4-KP2-Z-B Wireless 2-Button Keypad (Black)
- C4-KP2-Z-A Wireless 2-Button Keypad (Almond)
- C4-KP3-Z-W Wireless 3-Button Keypad (White)
- C4-KP3-Z-B Wireless 3-Button Keypad (Black)
- C4-KP3-Z-A Wireless 3-Button Keypad (Almond)
- C4-KP6-Z-W Wireless 6-Button Keypad (White)
- C4-KP6-Z-B Wireless 6-Button Keypad (Black)
- C4-KP6-Z-A Wireless 6-Button Keypad (Almond)

This device requires a neutral AC connection.

Specifications

This multi-button keypad is intended for use in a Control4® system. It installs in a standard wall box using typical wiring standards and communicates to the Control4 system using a wireless connection. The specifications are described below.

Power:	120 V~, 60/50 Hz, 490 mW
Supported Load Types:	Not Applicable. This device does not directly control a load.
Communications:	IEEE 802.15.4, 2.4 GHz, 15-channel, spread spectrum radio

WARNING! To reduce the risk of SERIOUS INJURY or DEATH, turn OFF local electrical power before installing this product, and before installing, removing, or replacing keycaps.

IMPORTANT! Using this product in a manner other than outlined in this document voids your warranty. Further, Control4 is NOT liable for any damage incurred with the misuse of this product. See "Limited 2 Year Warranty."

IMPORTANT! Do NOT use a power screw driver to install this device. If you do, you may overtighten the screws and strip them.

IMPORTANT! This is an electronic device with intricate components. Handle and install with care!

Installation Instructions

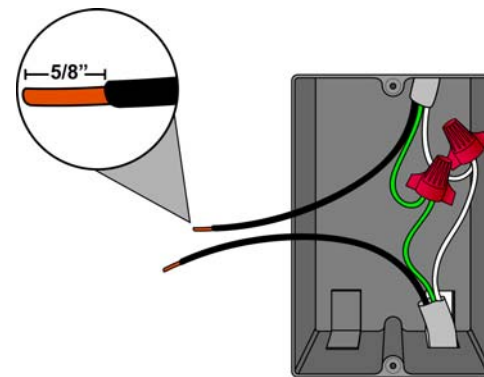
- Ensure that the location and intended use meet the following criteria:
 - When replacing a traditional 3-way switch, refer to the "Two-Location" sample wiring configurations provided in the following documents:
 - Wireless Dimmer Installation Guide
 - Wireless Switch Installation Guide
 - Install in accordance with all national and local electrical codes.
 - The required wall box size is specified by the NEC (National Electrical Code). The internal wall box volume occupied by this multi-button keypad is 5.0 cubic inches.
 - The range and performance of the wireless control system is highly dependent on the following: (1) distance between devices; (2) layout of the home; (3) walls separating devices; and (4) electrical equipment located near devices.
 - If you are planning to use engraved keycaps for 3-Button and 6-Button Keypads, DO NOT continue until you have read the "Replace Keycaps" section.
 - If installing a multi-button keypad in a multi-gang installation, DO NOT continue until you have read the "Multi-Gang Installations" section.

WARNING! To reduce the risk of SERIOUS INJURY or DEATH, turn OFF local electrical power before installing this product.

- Turn off the local electrical power by either switching off the circuit breaker or removing the fuse from the fuse box. To ensure the wires do NOT have power running to them, use an inductive voltage detector.

WARNING! As with any electrical device, improper use or installation can cause SERIOUS INJURY or DEATH. It is important that you understand the particular wiring configuration of your installation before proceeding. Note: The wall box wiring shown in this document is an example. Your wire colors and functions may differ. If you are not sure which wires are the Hot, Neutral, and Ground wires, have a trained electrician do the installation.

- Prepare each wire. Wire insulation should be stripped back 5/8 of an inch from the wire end (as shown).



WARNING! Ground the Wireless Keypad in accordance with the National Electric Code (NEC) requirements. Although the keypad's aluminum yoke plate and green ground wire are directly bonded together inside the keypad, DO NOT rely solely upon the yoke plate's contact with a metal wall box for adequate grounding. Use the keypad's ground wire to make a secure connection to the safety ground of the electrical system.

IMPORTANT! Not grounding this product according to the preceding may result in an installation less immune to damage caused by electrical disturbances, such as lightning, and void the warranty.

- If you need to "Replace Keycaps" or do "Multi-Gang Installations", then refer to those sections (to the right) before continuing.

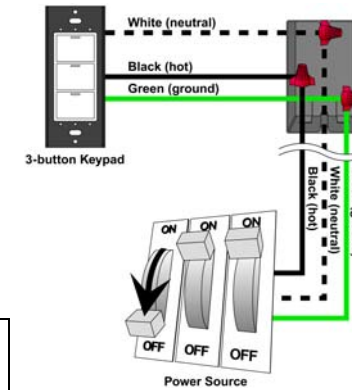
- Identify and connect the multi-button keypad wires to the wall box wires using wire nuts.



Note: Wall box wires can differ depending upon how the box was wired by your electrician.

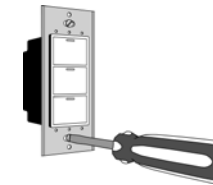
To wire the multi-button keypad, connect and cap with a wire nut the wires indicated in the following table.

Multi-Button Keypad Wires (2, 3, or 6-Button)	Wires in Wall Box
White (neutral)	White (neutral)
Green (ground)	Green (ground)
Black (hot)	Black (hot)



- Fit wires back into the wall box. Bend the wires in a zigzag pattern so that they easily fold into the wall box.

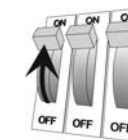
- If you are using the Control4 push-on (screw-less) wall plate that shipped with your multi-button keypad:
 - Align the multi-button keypad to the wall box and fasten with screws. Tighten the screws until the back side of the metal yoke plate is even with the wall surface, but no farther. Overtightening can warp the multi-button keypad and cause mechanical malfunction.
 - With the wall plate's removal slot facing down, push the wall plate onto the dimmer's black plastic sub-plate.



- If you are using a Decora-style screw-on wall plate:
 - Remove the multi-button keypad's black plastic sub-plate and store it for future use (in case you later decide to use the Control4 wall plate).
 - Align the multi-button keypad to the wall box and fasten with screws.
 - Fasten the wall plate to the multi-button keypad with screws.



- Turn ON power at the circuit breaker or replace fuse from fuse box.



- Ensure that all LEDs on the front are lit.

Replace Keycaps

Applies to 3-Button and 6-Button Keypads Only

WARNING! To avoid SERIOUS INJURY or DEATH, turn OFF local electrical power before installing, removing, or replacing keycaps.

Control4 offers *standard engraved keycaps* and *custom engraved keycaps* (both sold separately) to enable you to personalize 3-Button and 6-Button Keypads.



Note: Custom engraving is not available for 2-Button Keypads.

If you are replacing keycaps:

- Turn off local electrical power.
- Remove the screw-less or screw-on wall plate from the multi-button keypad.
- Remove the black plastic sub-plate from the multi-button keypad by removing the screw at the top and bottom of the device.
- Pinch both sides of the keypad retainer at both ends—working first at the top, then the bottom—to gently remove the retainer. *DO NOT pry the retainer off with a screw driver.*
- Remove the default keycaps from the keypad retainer and replace each one with the engraved keycap of your choice. Be sure to place the LED at the top.
- Carefully snap the retainer back into place, taking care not to damage the retainer clips.
- Reattach the sub-plate with the screws.
- Reattach the wall plate.



Multi-Gang Installations

Multi-gang installations are configurations in which 2 or more devices are installed side-by-side in the same wall box. For multi-gang installations:

If using a Control4 push-on (screw-less) multi-gang wall plate: Remove the individual black plastic sub-plate from each device and replace them with the multi-gang sub-plate that shipped with your Control4 multi-gang wall plate. The use of the multi-gang sub-plate inherently aligns and spaces each device properly.



TIP: For ease of installation, each device's yoke plate must be even and aligned in a flat plane so that the multi-gang sub-plate can sit flat against all of the devices. This can be accomplished by initially not screwing the devices tightly against the wall box, leaving about 1/8 of an inch gap between the wall and the yoke plates. This allows each device to move and conform to the sub-plate. Using the new screws supplied with the multi-gang sub-plate, secure the multi-gang sub-plate to all devices to create a single structure. Then secure the structure by tightening the wall box screws with the remaining 1/8 of an inch. Do not over-tighten any of the screws or you will misalign the flat plane of the multi-gang wall plate.

If using a Decora-style screw-on multi-gang wall plate: Remove the black plastic sub-plate from each device, just as you would for a single device (see step 8), and store it for future use in case you later decide to use the Control4 wall plate.

Operation and Configuration

On initial power up, the unit will flash the Red/Green/Blue (RGB) LEDs, which can be programmed with different colors for different states or color preferences. To set up this multi-button keypad for use with a Control4 system, refer to your system setup documentation.

Troubleshooting

If one or more Light Emitting Diodes (LEDs) are not lit:

- Ensure circuit breaker is not turned OFF or tripped.
- Check for proper wiring, such as the example in step 5. You may also need to contact a trained electrician.
- For help on the installation or operation of this product, email or call the Control4 Technical Support Center. Please provide your exact model number. Contact support@control4.com or see the web site www.control4.com.

Care and Cleaning

- Do NOT paint the multi-button keypad or its wall plate.
- Do NOT use any chemical cleaners to clean the multi-button keypad.
- Clean surface with a soft damp cloth as needed.

Regulatory Compliance

This product complies with standards established by the following regulatory bodies:

- Federal Communications Commission (FCC)
- Industry Canada
- Underwriters Laboratories Inc. (UL)

FCC

FCC ID: R33C4KP6Z

This device complies with Part 15 of the FCC Rules. Operation is subject to the following two conditions: (1) this device may not cause harmful interference, and (2) this device must accept any interference received, including interference that may cause undesired operation.

This equipment has been tested and found to comply with the limits for a Class B digital device, pursuant to Part 15 of the FCC Rules. These limits are designed to provide reasonable protection against harmful interference in a residential installation. This equipment generates, uses, and can radiate radio frequency energy and, if not installed and used in accordance with the instructions, may cause harmful interference to radio communications. However, there is no guarantee that interference will not occur in a particular installation. If this equipment does cause harmful interference to radio or television reception, which can be determined by turning the equipment off and on, the user is encouraged to try to correct the interference by one or more of the following measures:

- Reorient or relocate the receiving antenna.
- Increase the separation between the equipment and receiver.
- Connect the equipment into an outlet on a circuit different from that to which the receiver is connected.
- Consult the dealer or an experienced radio/TV technician for help.



IMPORTANT! Changes or modifications not expressly approved by Control4 could void the user's authority to operate the equipment.

Industry Canada

This Class B digital apparatus complies with Canada ICES-003.

Cet appareil numérique de la classe B est conforme à la norme NMB-003 du Canada.

ETL Statement

ETL Control Number: 3017581

This product has been tested by ETL and was found to comply with the Standard for Safety for Industrial Control Equipment:

- UL/ANSI Standard 508 (Seventeenth Edition)
- CSA Standard C22.2 No. 14-05



Limited 2 Year Warranty

Control4 Corporation ("Control4") warrants that at the time of first-consumer sale, this product will be free from defects in material and manufacture. Control4 further warrants that for a period of 2 years (24 months) after initial consumer sale, the product will function in accordance with its specification, provided that it is installed and maintained under normal and proper use. This warranty extends only to products purchased directly from Control4 or an Authorized Control4 Reseller. If the product proves to be defective in material or workmanship during the warranty period, it may be returned to the place of purchase and Control4 will, at its sole option, repair or replace the product with a like product. This warranty provides the consumer purchaser with specific legal rights, which may vary per state or country. For complete warranty information, including details on consumer legal rights as well as warranty exclusions, visit www.control4.com/warranty.

About this Document

United States Patents Pending. Copyright © 2007 Control4 Corporation.

Control4 and the Control4 logo are registered trademarks of Control4

Corporation. All trademarks are properties of their respective owners. Part

Number: 200-00037 Rev A