



Battery Replacement Safety Rules

CAUTION! To prevent battery shorting, leakage or rupture:

- Use AA Alkaline batteries only in the remote control.
- Do not mix battery types, such as Alkaline and rechargeable NiMH batteries.
- Do not attempt to recharge a battery unless the battery is specifically marked "rechargeable."
- Never dispose of batteries in a fire.

Attention ! Pour empêcher court-circuiter, fuite ou rupture de batterie :

- Utilisez les accumulateurs alcalins d'AA seulement dans le commutateur.
- Ne mélangez pas les types de batterie, tels que les batteries alcalines et rechargeables de NiMH.
- N'essayez pas de recharger une batterie à moins que la batterie soit spécifiquement marqué « rechargeable ».
- Ne vous débarrassez jamais des batteries dans un feu.

Vorsicht! Das Batteriekurzschluß, -durchsickern oder -abbruch verhindern:

- Benutzen Sie AA alkalische Batterien nur im Schalter.
- Mischen Sie nicht Batteriearten, wie alkalische und nachladbare NiMH Batterien.
- Versuchen Sie nicht, eine Batterie neuzuladen, es sei denn die Batterie ist spezifisch gekennzeichnetes „nachladbares.“
- Entledigen Sie nie sich Batterien in einem Feuer.



System Remote Control SR-250 Setup Guide

Uses and Feature

Control4 System Remote Control SR-250 (Model C4-SR250-Z-B) is intended for use in a Control4[®] system. It is included with the purchase of select Control4 controllers, but may also be purchased separately. This remote control can be used to:

- Navigate system menus and access media databases on a television or monitor
- Navigate system menus and access media databases in its own display window
- Control system devices

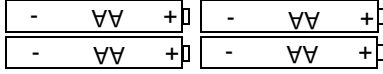
This remote control goes beyond a typical "universal" remote that simply learns IR codes from TVs, VCRs, CD players, and DVD players. This device features:

- Bi-directional communication with system components
- ZigBee wireless mesh networking
- Full access to system components
- Back-lighting on keys and display for ease of use in dark rooms
- Quick-access buttons to select recently used audio and video devices
- Programmable buttons
- Paging functionality
- Standard control features for: Digital Satellite Systems (DSS), Cable Boxes, TV Tuners, Digital Video Recorders (DVR), DVD Changers/Players, CD Changers/Players, MP3 Players, VCRs, or TVs.
- Powered by four AA batteries (included)

Install and Maintain Batteries

Install Batteries

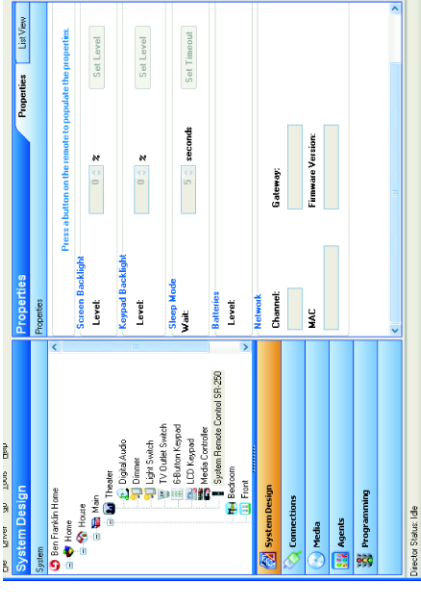
Install the four AA batteries (included with the product) into the back of the device. Ensure that you insert them into the remote control according to the diagram provided in the battery compartment (with the + and - terminals aligned correctly).



Battery Use and Care Tips

- Keep battery contacts and compartment clean.
- Remove batteries from the remote control if it is not expected to be in use for several months.
- Extreme temperatures reduce battery performance. Avoid putting the remote control in very warm places.

6 Change System Remote Control properties as needed in Composer: In the System Design view in the project tree (left pane), select the System Remote Control SR-250 object to display the remote's properties. The modifiable properties include:



- **Screen Backlight** — Set the light level (brightness) of the screen backlight. Choose a percentage from 0 (Off) to 100 (full brightness).
- **Keypad Backlight** — Set the light level (brightness) of the keypad backlight. Choose a percentage from 0 (Off) to 100 (full brightness).
- **Sleep Mode**—Set how long the remote stays awake after no activity. The default setting is 15 seconds, but can be extended up to 60 seconds or can be reduced down to 0 to conserve battery life.
- **Battery Level** — Displays current strength of batteries.
- **Channel** — Displays the ZigBee channel (1-14) set for the SR-250, which should match the ZigBee channel set for the controller.
- **Gateway** — Displays the MAC address of the zigbee server (usually your controller unless you specify differently).
- **MAC** — Displays the remote's own MAC address.
- **Firmware Version** — Displays the current firmware version.

7 Check or change ZigBee Channel: If you need to change the ZigBee channel in order to match the controller's channel (which is sometimes changed to improve reception), do the following at the SR-250:

1. Press the List button once or twice to display menu options.
2. Press buttons 2, 4, 6, #, * (in that order) to get into Edit mode.
3. Use up/down arrows and then press Select to change ZigBee channel.
4. Press List button to exit Edit mode and save changes.

Program the Programmable Buttons

On the System Remote Control Version SR-250, you can program 6 soft buttons (Red, Green, Yellow, Blue, *, and #) to perform programmed activities. These buttons can be programmed to execute any of the AV device's macros or IR codes. Program these options using the AV device property page.

- 1 Start Composer and connect to a Director.
- 2 Ensure the System Design view is selected.
- 3 Ensure that you have the following devices in your project:
 - Controller
 - System Remote Control SR-250
 - An AV device to be controlled
- 4 Select Connections view.
- 5 On the Network tab, ensure the controller and the System Remote Control are both network identified (have a network address).

6 Program the programmable buttons (Red, Green, Yellow, Blue, *, or #) either based on the selected AV device or the selected room.



Based on AV Device (pictured):

- a. Select System Design view.
- b. Select an AV device to display the device's Properties page.
- c. On the device's Properties page, choose Code or Macro for the button you want to program, then choose a code or macro from the drop-down list, edit Help text as needed, and then choose Set.

Note: Help text describes custom programming to end-users under the House option in any of the system navigation devices. For example: (1) In System Design view, select Disc Changer. (2) Under Red button, choose Code. (3) From the drop-down list, choose Subtitle. (4) Choose the Set button to create a Subtitle button.

Based on Room (not pictured):

- a. Select Programming view.
- b. Select a room in the Device Events pane.
- c. Select the Commands radio button in the [Room] Events pane.
- d. Use the drop-down menu to select a command or button (such as "Blue Button").
- e. Build the script using items from the Action pane to program the actions desired in the room selected when the selected command or button is used.

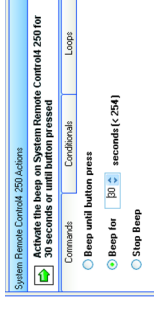
For more on programming, refer to the Composer Help file.

Program the Remotes Paging Feature

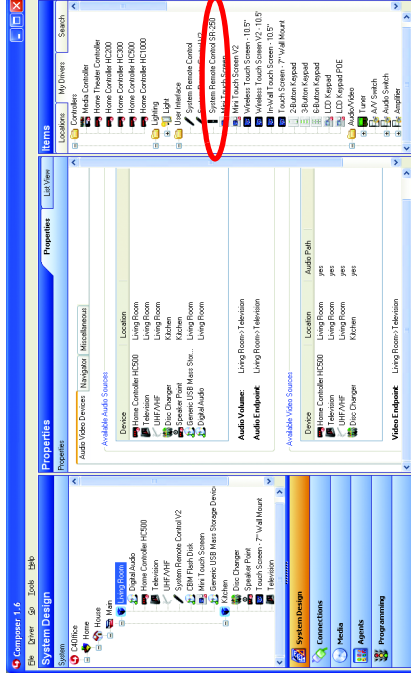
You can configure the Beep paging feature of this remote through programming. This feature can be used to page a lost remote. A keypad or custom button can be programmed to cause the remote to beep when pressed. This would allow the user to find the lost remote.

To program the paging feature for this remote:

- 1 Start Composer and connect to a Director.
- 2 Select the Programming view.
- 3 Select the Event that you want to use to start the page. For example, to select a keypad button press, first select the keypad under the Device Event section (on the left), then select the button under Events.
- 4 In the Actions list (on the right), select System Remote Control SR-250.
- 5 In the Commands list, choose an action for the remote and then double-click the green arrow to add the action to the script.



- **Beep until button press**—The remote will beep until you press one of its buttons.
- **Beep for X seconds (<254)**—The remote will beep until X seconds have elapsed or you press one of its buttons.
- **Stop Beep**—The remote will stop beeping.

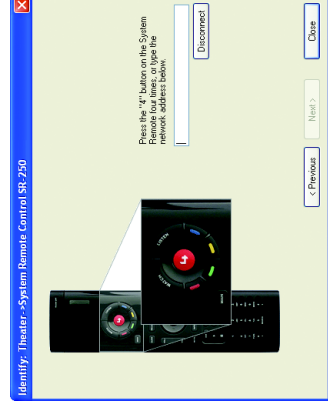


4 Double-click SR-250 to add the device to the project tree.

5 Identify the SR-250:

- a. In the Connections view, go to the Network tab.
- b. Select System Remote Control SR-250 in the center pane.
- c. Click Identify (or right-click and choose Identify).
- d. When prompted to do so, press the Red 4 Button four times to have the device identify itself to the Control4 system.

Note: To complete the identification process, the remote must be on the same ZigBee channel as the controller and the controller must have Zserver enabled. If you need to change the ZigBee channel on the remote, see step 7.



e. Once the MAC address appears in the window, click Close.

Regulatory Compliance



FCC

FCC ID: R33C4SR250Z

This device complies with Part 15 of the FCC Rules. Operation is subject to the following two conditions: (1) this device may not cause harmful interference, and (2) this device must accept any interference received, including interference that may cause undesired operation.

This equipment has been tested and found to comply with the limits for a Class B digital device, pursuant to Part 15 of the FCC Rules. These limits are designed to provide reasonable protection against harmful interference in a residential installation. This equipment generates, uses, and can radiate radio frequency energy and, if not installed and used in accordance with the instructions, may cause harmful interference to radio communications. However, there is no guarantee that interference will not occur in a particular installation. If this equipment does cause harmful interference to radio or television reception, which can be determined by turning the equipment off and on, the user is encouraged to try to correct the interference by one or more of the following measures:

- Reorient or relocate the receiving antenna.
- Increase the separation between the equipment and receiver.
- Connect the equipment into an outlet on a circuit different from that to which the receiver is connected.
- Consult the dealer or an experienced radio/TV technician for help.



IMPORTANT! Changes or modifications not expressly approved by Control4 could void the user's authority to operate the equipment.

Important ! Les changements ou les modifications pas expressément approuvés par Control4 ont pu vider l'autorité de l'utilisateur pour actionner l'équipement.

Wichtig! Die Änderungen oder Änderungen nicht ausdrücklich genehmigt durch Control4 könnten die Berechtigung des Benutzers aufheben, um die Ausrüstung laufen zu lassen.

Industry Canada

Canadian ID: 7848A-C4SR250Z

This Class B digital apparatus complies with Canada ICES-003.

Cet appareil numérique de la classe B est conforme à la norme NMB-003 du Canada.

Australian/New Zealand Compliance

- AS/NZS 4268:2003 + A1:2005 & A2:2006. **N14161 7703**

CE Declaration of Conformity



European Contact Information

Control4 UK Limited Unit 3,
Green Park Business Centre Sutton-
on-the-Forest, York YO61 1ET,
United Kingdom
+44 (0) 134781 2300
c4@control4-UK.com

United States Contact Information

Control4 Corporation
11734 S. Election Road,
Suite 200
Salt Lake City, UT 84020-6432,
USA Tel (801) 523-3100

Product: **System Remote Control**, Model No: **C4-SR250-Z-B**

The undersigned hereby declares, on behalf of Control4 Corporation, that the above-referenced product, to which this declaration relates, is in conformity with the provisions of:

- Council Directive 89/336/EEC (May 3, 1989) on Electromagnetic Compatibility
- Council Directive 1999/5/EC (Mar 9, 1999) on Radio & Telecommunication Terminal Equipment (R&TTE)
- Council Directive 73/23/EEC (Feb 19, 1973) on Low Voltage Equipment Safety
- Council Directive 93/68/EEC (Jul 22, 1993) Amending Directives 89/336/EEC and 73/23/EEC

and has been tested to the requirements of, and shown to be in compliance with, the following requisite standards:

- EN 55022: 2006 Information Technology Equipment, Class B.
- EN 55024:1998+A1+A2 Information technology equipment - Immunity characteristics - Limits and methods of measurement.
- EN 300 328-2 V1.4.1 — Wide band transmission systems; data transmission equipment operating in the 2.4GHz ISM band. Harmonised EN covering essential requirements under Article 3(2) of the R&TTE Directive.

The Technical Construction File required by these Directives is maintained at the corporate headquarters of Control4, Salt Lake City, Utah, U.S.A.

Signed, **Brett Molen**—Vice President, Engineering, August 27, 2008

Recycling

For information on recycling, please go to www.control4.com/recycling



Limited 2 Year Warranty

This device has a limited two (2) year warranty on parts from the date of purchase. Control4 will replace or repair any defective unit. Return unit to the place of purchase for replacement. For any damages incurred, the warranty will never exceed the purchase price of the device. This warranty does not cover installation, removal, or reinstallation cost. The warranty is not valid in cases where damage was incurred due to misuse, abuse, incorrect repair, or improper wiring or installation. It does not cover incidental or consequential damage. This warranty gives you specific legal rights, and you might also be entitled to other rights that vary from state to state. Some states do not allow limitations on how long an implied warranty lasts or the exclusion or limitation of incidental or consequential damages. In these cases, the above mentioned limitations might not apply to you. For complete warranty information, see <http://www.control4.com/dealer/>

About this Document

U.S. Patent Pending. Copyright © 2008 Control4 Corporation. Control4 and the Control4 logo are registered trademarks of Control4 Corporation. All trademarks are properties of their respective owners.

Part Number: 200-00071 Rev A