

SR260 System Remote Control Installation and Setup Guide



SR260 buttons



- A ROOM OFF**—Turns off devices in room
- B Display**—Screen that displays color text options
- C WATCH**—Displays video devices
- D Control4 button**—Displays Control4 Home page on TV
- E LISTEN**—Displays audio devices
- F LIST**—Displays system's menu (Navigator) on the display screen
- G Programmable buttons**—Functions vary
- H GUIDE**—Displays TV program listings
- I ▲PAGE/PAGE▼**—Scrolls pages up or down
- J PREV**—Returns to previous channel or screen
- K VOL**—Controls device volume
- L SELECT and directional buttons**—Scrolls up, down, left, or right; the center SELECT button selects the menu option
- M CH**—Scrolls up or down through TV channels
- N MUTE**—Toggles device sound off or on
- O INFO**—Shows program information
- P MENU**—Accesses device features and settings
- Q CNCL**—Sends "Cancel" or "Exit" command
- R DVR**—Controls the DVR
- S Playback control buttons:**
 - **Rewind/Fast forward**—Rewinds or fast forwards
 - **Skip back/Skip forward**—Skips back or forward
 - **Play**—Plays
 - **Record**—Starts recording
 - **Stop**—Stops
 - **Pause**—Pauses
- T Programmable buttons**—Functions vary
- U Alphanumeric buttons**—Directly enters channel numbers or text descriptions

Supported models

- SR260 System Remote Control-English (C4-SR260)
- SR260-I System Remote Control-Iconic (C4-SR260-I)

Introduction

The Control4® SR260 System Remote Control goes beyond a typical "universal" remote that simply learns IR codes from TVs, VCRs, CD players, and DVD players. This remote control offers complete system control in an elegant and compact design. The remote is equipped with a full-color screen, battery gauge, hidden ambient light sensor, faster processor, iconic button layout (C4SR260-I model), improved List Navigator, nine programmable shortcut buttons, and more. It's included with the purchase of select Control4 controllers, and can also be purchased separately. The SR260 requires Control4 OS 2.7 or later.

Use this guide along with the *SR260 User Guide*.

Use the remote to:

- Navigate system menus and access network-stored media on a TV or monitor with the on-screen Navigator
- Navigate system menus and access media information on the remote's display
- Control all system devices

Features

- Bi-directional communication with system components
- ZigBee® wireless mesh networking technology
- Full access to system components
- Full-color screen display
- Back-lit keys and display for ease of use in dark rooms
- Ambient light sensor for efficient control of backlighting
- 50 buttons total:
 - Two quick-access buttons (WATCH and LISTEN) to display either the most used AV devices or a list of all available AV devices
 - Nine programmable buttons
 - Eight transport control buttons
 - Standard alphanumeric buttons
 - Control4 button
- Paging functionality
- Standard control features for digital satellite systems (DSS), cable boxes, tuners, digital video recorders (DVR), DVD changers/players, CD changers/players, MP3 players, VCRs, or TVs
- Built-in motion detection can wake up the remote automatically
- Powered by four AA batteries (included)

Install and maintain batteries

Install the batteries

Install the four AA batteries (included) into the back of the SR260 according to the diagram in the battery compartment (with the + and - terminals aligned correctly).

Battery use and care

- Keep the battery contacts and compartment clean.
- Remove the batteries from the remote if it is not going to be used for several months.
- Extreme temperatures reduce battery performance. Avoid putting the SR260 in very warm places.

Battery replacement safety rules



Warning! To prevent a battery short, leakage or rupture:

- Use typical AA Alkaline batteries only.
- Do not mix battery types, such as Alkaline and rechargeable NiMH batteries.
- Do not attempt to recharge a battery unless the battery is specifically marked "rechargeable."
- Never dispose of batteries in a fire.

AVERTISSEMENT! Pour empêcher court-circuiter, fuite ou rupture de batterie:

- Utilisez les accumulateurs alcalins typiques d'AA seulement.
- Ne mélangez pas les types de batterie, tels que les batteries alcalines et rechargeables de NiMH.
- N'essayez pas de recharger une batterie à moins que la batterie soit spécifiquement marqué « rechargeable ».
- Ne vous débarrassez jamais des batteries dans un feu.

Recharging station

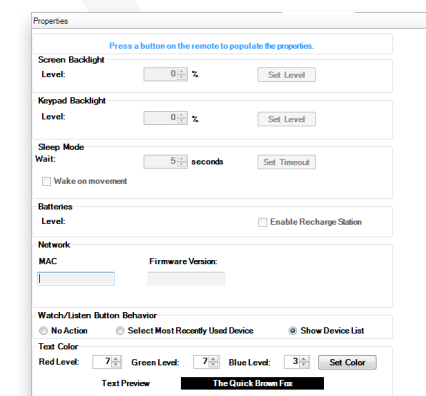
A Remote Recharging Station is also available (sold separately) with a rechargeable battery to keep your remote always charged. For more information, see the Dealer Portal.

Configure the remote

Add and configure the remote control with Composer Pro. See the *Composer Pro User Guide* for instructions about adding devices.

To configure the remote:

- 1 In Composer Pro, add and identify the **System Remote Control SR260** driver to your project.
- 2 In the *System Design* view, select **System Remote Control SR260** to view and change the remote's properties.



- **Display Brightness**—Sets the brightness of the remote's screen, from 0 (off) to 100 (full brightness).
 - **Keypad Brightness**—Sets the brightness of the keypad backlight, from 0 (off) to 100 (full brightness).
 - **Sleep Mode**—Sets how long the remote stays awake after no activity. The default setting is 15 seconds, but can be extended up to 90 seconds or reduced to 10 to conserve battery life.
 - **Battery Level**—Displays the current battery charge level.
 - **Channel**—Displays the ZigBee channel set for the remote, which should match the ZigBee channel for the controller.
 - **Gateway**—Displays the MAC address of the ZigBee Server (usually your controller, unless you specify differently).
 - **MAC**—Displays the remote's MAC address.
 - **Firmware Version**—Displays the remote's current firmware version.
 - **Watch/Listen Button Behavior**—Sets whether the buttons show a list of available devices or only the most recently used devices.
- 3 On the remote, press **LIST**, then select **Settings > Config**. The following menu opens, where you can change remote control settings:
 - **Display Brightness**—Sets the brightness of the remote's screen.
 - **Keypad Brightness**—Sets the brightness of the remote's keypad backlight.
 - **Motion Detect**—Sets the remote to wake from Sleep Mode when it's picked up.
 - **Light Sensor**—When enabled, adjusts the brightness of the screen and keypad backlight based on the light it senses in the room.
 - **Text Color**—Changes the List Navigator's text color.
 - **Recharge Station**—When enabled, configures the remote to use the Recharging Station's rechargeable lithium polymer battery. When disabled, configures the remote for regular alkaline batteries.
 - **Battery Level**—Shows the current battery charge level.
 - **Factory Defaults**—Resets the remote to its factory defaults.

Each change is saved as soon as it's made.

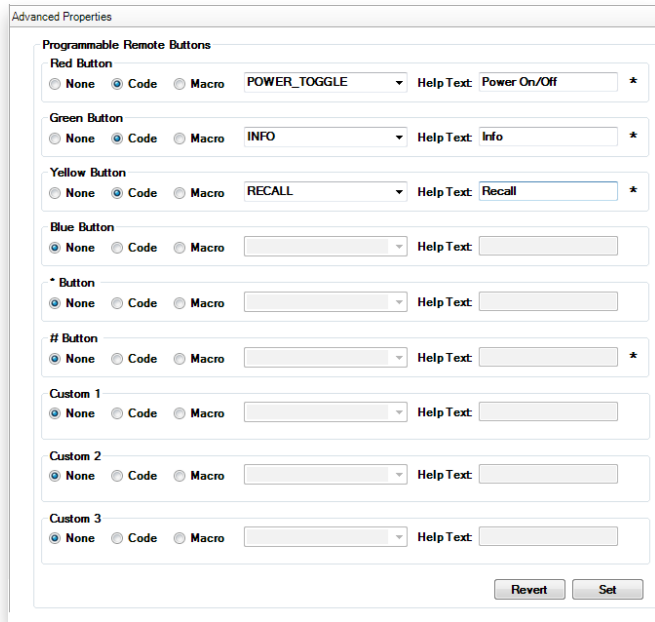
Program the programmable buttons


On the SR260, you can program up to nine buttons (red, green, yellow, blue, ., . ., . . ., *, and #) to perform specific activities, for example, to execute any of the AV device's macros or IR codes.

Program the buttons using either the AV device's Properties or the room's events.

To program buttons based on AV device:

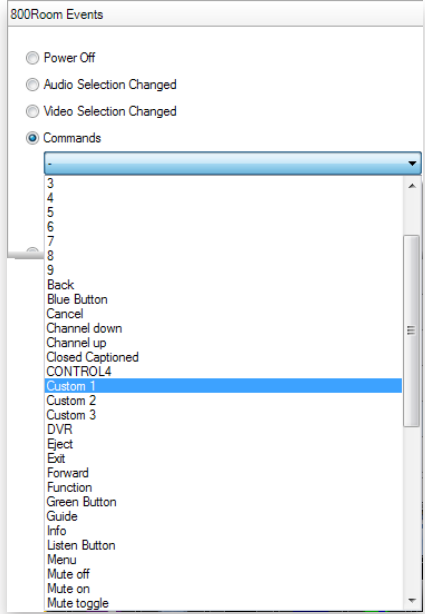
- 1 Select the **System Design** view.
- 2 Select an AV device to display the device's *Properties* page.



- 3 On the device's *Properties* page, select **Code** or **Macro** for the button you want to program.
 - 4 Select a code or macro from the button's drop-down list, then edit the help text as needed.
-  **Tip:** Help text describes custom programming on the remote's List Navigator.
- 5 When you're done programming the buttons, click **Set**.

To programm buttons based on room:

- 1 Select the *Programming* view, then select a room in the project tree in the *Events* pane.



- 2 Select the **Commands** radio button, then select a command or button from the drop-down menu.
- 3 Build the script using items from the *Actions* pane to program the actions desired in the room when you select the command or button.

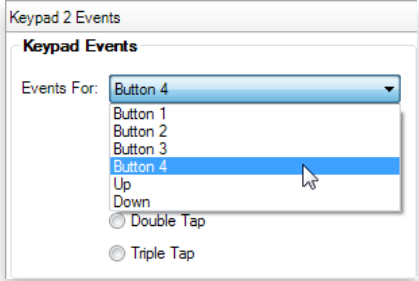
For more information about programming, see the *Composer Pro User Guide*.

Program SR260 paging

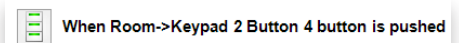
You can program an action, such as a keypad button press, to page the remote control (have the remote beep several times) if it's misplaced.

To program the remote's paging feature:

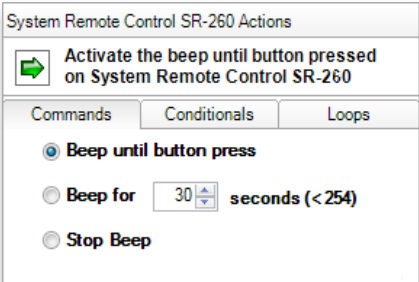
- 1 In Composer Pro, select the *Programming* view.
- 2 Select the event that you want to use to start the page. For example, to select a keypad button press, first select the keypad in the project tree in the *Events* pane, then select the button under *Events*.



The first part of the script is added to the *Script* pane.



- 3 In the project tree in the *Actions* pane (on the right), select **System Remote Control SR260**.
- 4 In the *Commands* list, choose an action for the remote control, then double-click the green arrow to add the action to the *Script* pane.



- **Beep until button press**—The remote beeps until you press one of its buttons.
- **Beep for X seconds (<254)**—The remote beeps until x seconds have elapsed, or you press one of its buttons.
- **Stop Beep**—The remote stops beeping.

Additional resources

The following resources are available for more support.

- Control4 Knowledgebase and Forums
- Control4 Technical Support
- Control4 website: www.control4.com
- Composer documentation in online help or PDF formats on the Dealer Portal
- Consumer documentation on the Consumer Portal

Regulatory/safety information

To review regulatory information for Control4 products, see the Control4 website at ctrl4.co/reg.

Warranty

Visit www.control4.com/warranty for details.

More help

For the latest version of this document and to view additional materials, open the URL below or scan the QR code on a device that can view PDFs.



control4.com | 888.400.4070



Regulatory Compliance & Safety Information for Control4 Model C4-SR260, C4-SR260-I & C4-SRRC

Electrical Safety Advisory **Sécurité électrique consultatif**

Important Safety Information

Informations de sécurité importantes

Read the safety instructions before using this product.

Lisez les consignes de sécurité avant d'utiliser ce produit.

1. Read these instructions.
1. Lisez ces instructions.
2. Keep these instructions.
2. Conservez ces instructions.
3. Heed all warnings.
3. Respectez tous les avertissements.
4. Follow all instructions.
4. Suivez toutes les instructions.
5. Do not use this apparatus near water.
5. Ne pas utiliser cet appareil près de l'eau.
6. Clean only with dry cloth.
6. Nettoyez-le uniquement avec un chiffon sec.
7. Do not block any ventilation openings. Install in accordance with the manufacturer's instructions.
7. Ne pas bloquer les ouvertures de ventilation. Installer conformément aux instructions du fabricant.
8. Do not install near any heat sources such as radiators, heat registers, stoves, or other apparatus (including amplifiers) that produce heat.
8. Ne pas installer près de sources de chaleur telles que des radiateurs, registres de chaleur, poêles, ou autres appareils (incluant les amplificateurs) qui produisent de la chaleur.
9. Do not defeat the safety purpose of the polarized or grounding-type plug. A polarized plug has two blades with one wider than the other. A grounding type plug has two blades and a third grounding prong. The wide blade or the third prong is provided for your safety. If the provided plug does not fit into your outlet, consult an electrician for replacement of the obsolete outlet.
9. Ne pas contourner le dispositif de sécurité de la fiche polarisée ou de mise à la terre. Une fiche polarisée possède deux lames dont une plus large que l'autre. Une fiche de terre a



deux lames et une troisième broche de terre. La lame large ou la troisième broche est fournie pour votre sécurité. Si la fiche fournie ne s'adapte pas à votre prise, consultez un électricien pour le remplacement de la prise obsolète.

10. Protect the power cord from being walked on or pinched particularly at plugs, convenience receptacles, and the point where they exit from the apparatus.
10. Protégez le cordon d'alimentation ne soit piétiné ou pincé, en particulier au niveau des fiches, des prises et au point où il sort de l'appareil.
11. Only use attachments/accessories specified by the manufacturer.
11. Utilisez uniquement des fixations / accessoires spécifiés par le fabricant.
12. Use only with the cart, stand, tripod, bracket, or table specified by the manufacturer, or sold with the apparatus. When a cart is used, use caution when moving the cart/apparatus combination to avoid injury from tip-over.
12. Utilisez uniquement avec le chariot, le socle, le trépied, le support ou la table spécifiés par le fabricant ou vendu avec l'appareil. Lorsque vous utilisez un chariot, soyez prudent lorsque vous déplacez l'ensemble chariot / appareil pour éviter des blessures dues au renversement.
13. Unplug this apparatus during lightning storms or when unused for long periods of time. This equipment uses AC power which can be subjected to electrical surges, typically lightning transients which are very destructive to customer terminal equipment connected to AC power sources. The warranty for this equipment does not cover damage caused by electrical surge or lightning transients. To reduce the risk of this equipment becoming damaged it is suggested that the customer consider installing a surge arrester.
13. Débranchez cet appareil pendant les orages ou lorsqu'il n'est pas utilisé pendant de longues périodes de temps. Cet équipement utilise la puissance AC qui peuvent être soumis à des surtensions électriques, la foudre généralement transitoires qui sont très destructives envers les équipements terminaux connectés à des sources d'alimentation CA. La garantie de cet appareil ne couvre pas les dommages causés par les surtensions électriques ou transitoires de foudre. Pour réduire le risque de cet équipement devient endommagé, il est suggéré que le client envisager l'installation d'un limiteur de surtension.
14. Refer all servicing to qualified service personnel. Servicing is required when the apparatus has been damaged in any way, such as power-supply cord or plug is damaged, liquid has been spilled or objects have fallen into the apparatus, the apparatus has been exposed to rain or moisture, does not operate normally, or has been dropped.
14. Confiez toutes les réparations à un personnel qualifié. Une réparation est nécessaire lorsque l'appareil a été endommagé de quelque façon que ce soit le cordon d'alimentation ou la fiche est endommagé, du liquide a été renversé ou si des objets sont tombés dans l'appareil, l'appareil a été exposé à la pluie ou à l'humidité, ne fonctionne pas normalement, ou s'il est tombé.
15. Use the circuit breaker to disconnect the apparatus from the AC mains. The circuit breaker shall remain readily accessible.
15. Utiliser le disjoncteur pour déconnecter l'appareil de l'alimentation secteur. Le disjoncteur doit rester facilement accessible.
16. To completely disconnect unit power from the AC mains, turn off the circuit breaker. To reconnect power, turn on the circuit breaker following all safety instructions and guidelines.

16. Pour couper entièrement l'alimentation appareil de l'alimentation secteur, éteignez le disjoncteur. Pour rétablir le courant, mettez le disjoncteur après les consignes de sécurité et des lignes directrices.
17. This product relies on the buildings installation for short-circuit (overcurrent) protection. Ensure that the protective device is rated not greater than: 20A.
17. Ce produit repose sur l'installation des bâtiments pour les courts-circuits (surintensité) de protection. Assurez-vous que le dispositif de protection est assignée ne dépassant pas: 20A.
18. **CAUTION:** As with all batteries, there is a risk of explosion or personal injury if the battery is replaced by an incorrect type. Dispose of used battery according to the instructions of the battery manufacturer and applicable environmental guidelines. Do not open, puncture or incinerate the battery, or expose it to conducting materials, moisture, liquid, fire or heat above 54° C or 130° F.
18. **ATTENTION:** Comme avec toutes les batteries, il ya un risque d'explosion ou de blessure si la batterie est remplacée par un type incorrect. Éliminez les batteries usagées selon les instructions du fabricant de la batterie et applicables des directives environnementales. Ne pas ouvrir, percer ou incinérer la batterie, ou de l'exposer à des matériaux conducteurs, de l'humidité, du liquide, un incendie ou une température supérieure à 54 ° C ou 130 ° F.
19. Never push objects of any kind into this product through cabinet slots as they may touch dangerous voltage points or short out parts that could result in fire or electric shock.
19. N'introduisez jamais d'objets d'aucune sorte dans ce produit à travers les fentes du boîtier car ils pourraient toucher des points de tension dangereux ou court-circuiter des pièces qui pourraient entraîner un incendie ou un choc électrique.
20. This product can interfere with electrical equipment such as tape recorders, TV sets, radios, computers and microwave ovens if placed in close proximity.
20. Ce produit peut interférer avec des appareils électriques tels que les magnétophones, téléviseurs, radios, ordinateurs et fours à micro-ondes si placés à proximité.



The lightning flash and arrow head within the triangle is a warning sign alerting you of dangerous voltage inside the product
L'éclair et la flèche dans le triangle est un signe d'alerte pour vous avertir d'une tension dangereuse à l'intérieur du produit



Caution: To reduce the risk of electric shock, do not remove cover (or back). No user serviceable parts inside. Refer servicing to qualified service personnel.
Attention: Pour réduire le risque de choc électrique, ne pas retirer le couvercle (ou l'arrière). Aucune pièce réparable par l'utilisateur. Confiez l'entretien à un personnel qualifié.



The exclamation point within the triangle is a warning sign alerting you of important instructions accompanying the product.
Le point d'exclamation dans un triangle est un signe d'avertissement vous signale des instructions importantes accompagnant le produit.

See marking on bottom / back of product
Voir le marquage sur les bas / dos du produit



Warning!: To reduce the risk of electrical shock, do not expose this apparatus to rain or moisture

AVERTISSEMENT! Pour réduire le risque de choc électrique, n'exposez pas cet appareil à la pluie ou à l'humidité.

Save these instructions
Conservez ces instructions

Compliance of this equipment is confirmed by the following label that is placed on the equipment:
Conformité de cet appareil est confirmé par le symbole suivant qui est placé sur l'équipement:



USA & Canada Compliance

FCC Part 15, Subpart B Unintentional Emissions Interference Statement

This equipment has been tested and found to comply with the limits for a Class B digital device, pursuant to Part 15 of the FCC rules. These limits are designed to provide reasonable protection against harmful interference when the equipment is operated in a residential installation. This equipment generates uses and can radiate radio frequency energy and, if not installed and used in accordance with the instructions, may cause harmful interference to radio communications. However, there is no guarantee that interference will not occur in a particular installation. If this equipment does cause harmful interference to radio or television reception, which can be determined by turning the equipment off and on, the user is encouraged to try to correct the interference by one or more of the following measures:

- Reorient or relocate the receiving antenna.
- Increase the separation between the equipment and receiver.
- Connect the equipment into an outlet on a circuit different from that to which the receiver is connected.
- Consult the dealer or an experienced radio/TV technician for help.

FCC Partie 15, sous-section B Unintentional Déclaration sur les interférences des émissions

Cet équipement a été testé et jugé conforme aux limites établies pour un dispositif numérique de classe B, conformément à la Partie 15 des règlements de la FCC. Ces limites sont conçues pour fournir une protection raisonnable contre les interférences nuisibles lorsque l'équipement est utilisé dans une installation résidentielle. Cet équipement génère, utilise et peut émettre de l'énergie rayonnent fréquence et, s'il n'est pas installé et utilisé conformément aux instructions, il peut causer des interférences nuisibles aux communications radio. Cependant, il n'existe aucune garantie que des interférences ne se produiront pas dans une installation particulière. Si cet équipement provoque des interférences nuisibles à la réception radio ou télévision, ce qui peut



être déterminé en mettant l'équipement hors et sous tension, l'utilisateur est encouragé à essayer de corriger l'interférence par une ou plusieurs des mesures suivantes:

- Réorienter ou déplacer l'antenne de réception.
- Augmenter la distance entre l'équipement et le récepteur.
- Connecter l'équipement à une prise sur un circuit différent de celui sur lequel le récepteur est branché.
- Consulter le revendeur ou un technicien radio / télévision qualifié pour obtenir de l'aide.

This device complies with part 15 of the FCC rules and Industry Canada's licence-exempt RSS-GEN. Operation is subject to the following two conditions: (1) This device may not cause harmful interference, and (2) this device must accept any interference received, including interference that may cause undesired operation.

Le présent appareil est conforme partie 15 des règles de la FCC et aux RSS-GEN d'Industrie Canada applicables aux appareils radio exempts de licence. L'exploitation est autorisée aux deux conditions suivantes : (1) l'appareil ne doit pas produire de brouillage, et (2) l'utilisateur de l'appareil doit accepter tout brouillage radioélectrique subi, même si le brouillage est susceptible d'en compromettre le fonctionnement.

IMPORTANT! Any changes or modifications not expressly approved by the party responsible for compliance could void the user's authority to operate this equipment.

IMPORTANT! Tous les changements ou modifications pas expressément approuvés par la partie responsable de la conformité ont pu vider l'autorité de l'utilisateur pour actionner cet équipement.

FCC Part 15, Subpart C / RSS-210 Intentional Emissions Interference Statement

Compliance of this equipment is confirmed by the following certification numbers that are placed on the equipment:

Notice: The term "FCC ID:" and "IC" before the certification number signifies that FCC and Industry Canada technical specifications were met.

FCC ID: R33C4SR260
IC: 7848A-C4SR260

This equipment must be installed by qualified professionals or contractors in accordance with FCC Part 15.203 & IC RSS-210, Antenna Requirements. Do not use any antenna other than the one provided with the unit.

FCC Partie 15, sous-partie C / RSS-210 Déclaration volontaire des émissions interférences

Conformité de cet appareil est confirmé par les chiffres de certification suivants qui sont placés sur l'équipement:

Avis: Le terme "FCC ID:" and "IC" avant le numéro de certification signifie que la FCC et Industrie Canada ont été respectées.

FCC ID: R33C4SR260
IC: 7848A-C4SR260

Cet équipement doit être installé par des professionnels qualifiés ou entrepreneurs conformément aux normes FCC partie 15.203 & IC RSS-210, Exigences d'antenne. Ne pas utiliser une antenne autre que celui fourni avec l'appareil.



RF Radiation Exposure Statement

This equipment complies with the FCC/IC radiation exposure limits set fourth for portable transmitting devices operation in an uncontrolled environment. End users must follow the specific operating instructions to satisfy RF exposure compliance.

- The equipment should only be used or installed at locations where there is greater than 20cm separation between the antenna and all persons.
- This transmitter must not be co-located or operation in conjunction with any other antenna or transmitter.
- Any changes or modifications not expressly approved by the party responsible for compliance could void the user's authority to operate this equipment.

Déclaration d'exposition aux radiations RF

Cet équipement est conforme aux limites FCC / IC d'exposition aux rayonnements définies quatrième opération appareils portables transmettre dans un environnement non contrôlé. Les utilisateurs finaux doivent suivre les instructions de fonctionnement spécifiques pour satisfaire la conformité aux expositions RF.

- L'équipement ne doit être utilisé ou installé à des endroits où il ya plus de 20 cm de séparation entre l'antenne et toute personne.
- Cet émetteur ne doit pas être co-localisés ou fonctionnement en conjonction avec une autre antenne ou un autre émetteur.
- Tout changement ou modification non expressément approuvé par la partie responsable de la conformité pourraient annuler l'autorité de l'utilisateur à utiliser cet équipement.



European Compliance

Conformity of the equipment with the guidelines below is attested by the application of the CE mark.



CE Declaration of Conformity

Manufacturer's Name: CONTROL4 CORPORATION
Manufacturer's Address: 11734 S. ELECTION ROAD SUITE 200
SALT LAKE CITY
UT 84020 USA

EU Representative Name: CONTROL4 EMEA LIMITED
EU Representative Address: UNIT3, GREEN PARK BUSINESS CENTRE
SULTON-ON-THE FOREST
YORK YO61 IET, UNITED KINGDOM

Product Name(s): System Remote Control & Recharging Station
Brand: Contol4
Model(s): C4-SR260, C4-SR260-I & C4-SRRS

Product Standard(s) to which Conformity of the Council Directive(s) is declared:

EMC - 2004/108/EC "Electromagnetic Compatibility (EMC) Directive":
(Emissions) EN 55022:2010, **(Immunity)** EN 55024:2010, EN 301 489-1 V1.9.2 (2011-09), EN 301 489-17 V2.2.1 (2012-09), EN 61000-3-2:2006 + A1:2009 + A2:2009 & EN 61000-3-3:2008

Safety – 206/95/EC "Low Voltage Directive (LVD)":
EN 60950-1:2006/A11:2009/A1:2010/A12:2011

Telecom & Radio - 1999/5/EC Radio equipment and Telecommunications Terminal Equipment (R&TTE) Directive:
EN 300 328 V1.8.1

RoHS - 2011/65/EU Restriction of the Use of certain Hazardous Substances in Electrical and Electronic Equipment (EEE) & WEEE - 2002/96/EC Waste of Electrical and Electronic Equipment (EEE).

We, the undersigned, hereby declare that the equipment specified above conforms to the above directives and standards. Date of Issue: Enter Date

Legal Representative

Signature

Roger Midgley
Sr. Regulatory Compliance Engineer



Recycling

Control4 understands that a commitment to the environment is essential for a health life and sustainable growth for future generations. We are committed to supporting the environmental standards, laws, and directives that have been put in place by various communities and countries that deal with concerns for the environment. This commitment is represented by combining technological innovation with sound environmental business decisions.

WEEE Compliance

Control4 is committed to meeting all requirements of the Waste Electrical and Electronic Equipment (WEEE) directive (2002/96/EC). The WEEE directive requires the manufacturers of electrical and electronic equipment who sell in EU countries: (1) label their equipment to notify customers that it needs to be recycled, and (2) provide a way for their products to be appropriately disposed of or recycled at the end of their product lifespan. For collection or recycling of Control4 products, please contact your local Control4 representative or dealer.



Australia / New Zealand Compliance

Compliance of this equipment is confirmed by the following label that is placed on the equipment:



About this Document

Copyright © 2015 Control4 Corporation. All rights reserved. Control4 and the Control4 logo are registered trademarks or trademarks of Control4 Corporation in the United States and/or other countries.

Part Number 200-00413 Rev A, 2/13/15