

7" Portable Touch Screen Setup Guide



Supported Models

- C4-TSMC7-EN-BL 7" Portable Touch Screen, Black

Box Contents

Carefully unpack the Control4® 7" Portable Touch Screen and ensure the following items are included in the box.

CAUTION! Do not apply excessive pressure to the Touch Screen display during handling. Doing so can crack the screen and damage the Touch Screen.

- Control4 7" Portable Touch Screen
- Control4 7" Portable Touch Screen Dock
- DC Power Adapter (only use the power supply provided)
- (Optional) Two (2) screws for securing the dock to the Touch Screen
- Warranty Card

Requirements

- Phillips head screwdriver
- Two (2) screws (included) to secure the Touch Screen to the dock

Accessories

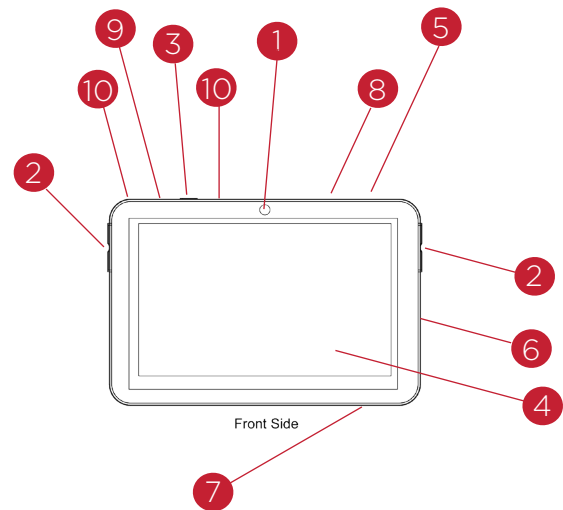
- Control4 Power-Over-Ethernet Injector (AC-POE1-B), sold separately

Specifications

Screen	7" 16:9 WXGA Color LCD Module Resolution: 800 x 480 Brightness: 400 nits (without Touch Screen)
Wireless	Built In IEEE802.11 b/g/n Wireless LAN Integral Antenna (b/g/n supported) Authentication: WEP, WPA, WPA2
Dimensions	4.921 in. (12.5cm) x 7.44 in. (18.9cm) x .669 in. (1.7cm)
Weight	1.75 lbs. (.793 kg)
Network	WiFi (802.11 b, g, or n) wireless access point (WAP) already configured to communicate with a Control4 Controller (e.g., HC-300).

Front and Rear Panel Descriptions

Figure 1. Front View



- 1 Camera.** Used to view activity on another compatible Control4 device in another room.
- 2 Programmable Buttons (4).** Used to program various home automation activities in Composer programming.
- 3 Power Button.** Used to power the Touch Screen on or off. Also see "Touch Screen Modes."
- 4 Touch Screen.** The front face of the Touch Screen.
- 5 Reset/Restore Pinhole.** Used to reset or restore the factory defaults.
- 6 Speaker.** Used for Intercom purposes.
- 7 Headphone Jack (3.5mm).** Used to connect headphones for Intercom purposes.

7" Portable Touch Screen Setup Guide

- 8** Camera LED Indicator. Indicates if the camera is on. Green indicates the camera is on.
- 9** Power LED Indicator. Indicates if the power is on.
- 10** Microphones. Used to speak into the Touch Screen.

Power and Network Connections

Before you begin to install your Touch Screen, you'll need to make a few decisions:

- 1** Will you be using the Touch Screen as a portable device (dock not attached) or with the dock attached? See "Portable or Tabletop Installation Options" for details.
- 2** Will you be using the DC Power Adapter (included) or Power-Over-Ethernet (sold separately)? See "Portable or Tabletop Installation Options" for details.

LED Indicators

The LEDs on the Touch Screen indicate the status of the power supply, battery charge, booting, etc., as described in the next table.

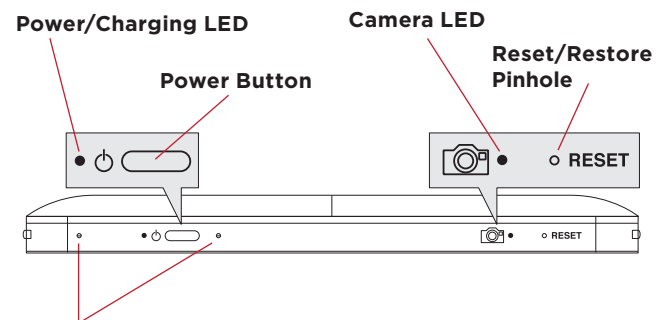
LED Color	Touch Screen Status
Off	- Not charging - Screensaver mode, blank - Screensaver mode, charging
Red	- Off, charging
Green	- On, not charging - Suspend/asleep, not charging
Green (blinking)	- Booting, not charging
Green (fast blinks)	- Restoring, not charging
Orange	- On, charging - Suspend/asleep, charging
Orange (blinking)	- Booting while charging

LED Color	Touch Screen Status
Orange (fast blinks)	- Restoring while charging



NOTES: (1) If the device is OFF, press Power. If the device is asleep, press any button or tap the screen. (2) The Touch Screen must be connected to a power supply for at least four (4) hours so the battery can fully charge. (3) If the battery power is critically low, you can still turn on the device as long as the dock is plugged in to the power adapter or PoE.

Figure 2. Top View



Microphones

Figure 3. Bottom View

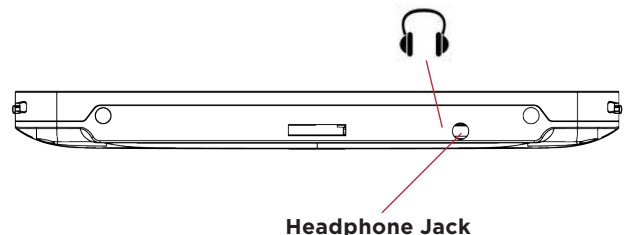


Figure 4. Right View

Programmable Buttons (on right and left sides)

Speaker

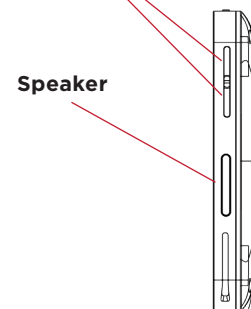


Figure 5. Back View with Dock and Connections



Portable or Tabletop Installation Options


You can use the 7" Portable Touch Screen as a portable device that you carry with you as you move around the house, or you can screw the Touch Screen into the dock.

- If you intend to use the device ONLY as a tabletop, you can use either an Ethernet or a WiFi connection.
- If you intend to use the Touch Screen as a portable device and remove the Touch Screen from its dock, you must use a WiFi connection.

To use the Touch Screen as a portable device, follow the instructions next. To use the Touch Screen as a tabletop device, using the two (2) screws indicated in "Requirements," follow the instructions in "Using the Touch Screen as a Tabletop Device."

Using the Touch Screen as a Portable Device

Use the 7" Portable Touch Screen dock as the docking station for the Touch Screen (see Figure 6).

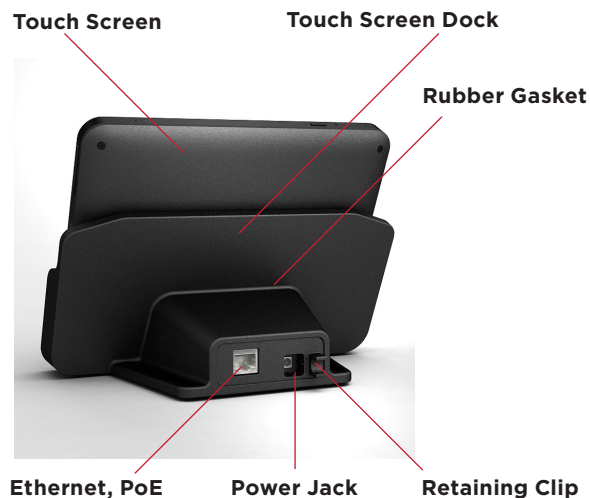
 **NOTE:** You must use WiFi if the Touch Screen will be used as a portable device.

- 1** Place the 7" Portable Touch Screen dock on a flat surface.
- 2 Power.** Insert the power cable into the power jack slot on the back of the device (see Figure 7), and then plug the power cord into a wall outlet. The device can be powered using either an Ethernet connector or a PoE connector. To use Ethernet, plug the RJ-45 connector into the PoE connector and then into the Ethernet jack on the back of the Touch Screen dock (see Figure 6).



NOTE: If you use Ethernet and undock the Touch Screen, you will lose connectivity

Figure 6. Back View with Power Connections



NOTE: The power cord angles to the right and is held by the retaining clip. When you insert the power cord, it also snaps into the retaining clip.

- 3** Insert the Touch Screen into the dock's slot.
- 4** Wake up the Touch Screen by either touching the screen or by pressing any button.

Using the Touch Screen as a Tabletop Device

- 1** Place the 7" Portable Touch Screen dock on a flat surface.
- 2 Power.** Insert the power cable into the power jack slot on the back of the device (see Figure 6), and then plug the power cord into a wall outlet. The device can be powered using either an Ethernet connector or a PoE connector. To use Ethernet, plug the RJ-45 connector into the PoE connector and then into the Ethernet jack on the back of the Touch Screen dock (see Figure 6).

Now you can attach the Touch Screen to the dock using the screws provided to prevent the Touch Screen from becoming disconnected and nonfunctional every time it is removed.



NOTE: Power off the Touch Screen before screwing in the screws.

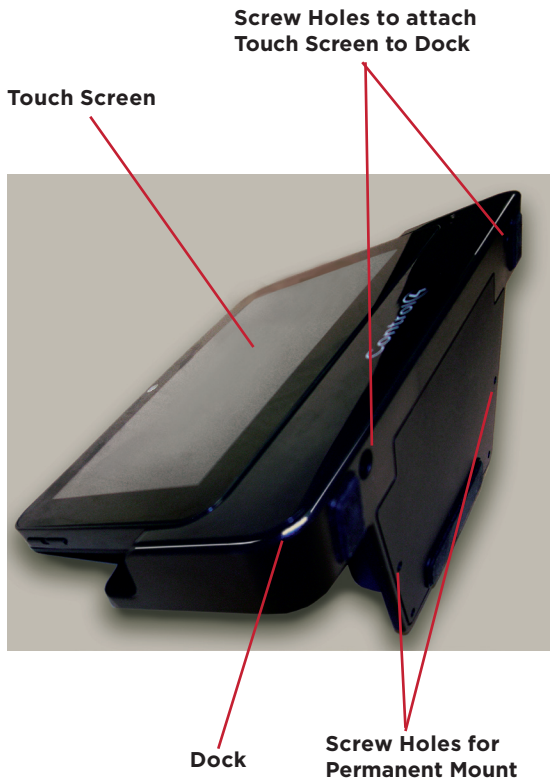
To attach the Touch Screen to the docking station:

- 1** Remove the two (2) rubber protectors from the screw holes on the bottom of the Touch Screen's

dock.

- 2 Insert the Touch Screen into its dock.
- 3 Turn the Touch Screen and dock upside down and insert the two (2) screws (included).
- 4 Screw the dock to the Touch Screen (Figure 7).

Figure 7. Bottom View with Dock



- 5 Wake up the Touch Screen by either touching the screen or by pressing any button.
- 6 (Optional) You can permanently mount the Touch Screen and dock to a tabletop by screwing the base onto a flat surface (screws not included). See Figure 7.

Touch Screen Modes

The Touch Screen uses the following modes:

- **Off:** The screen, the AC Power indicator, and the battery indicator are all dark (the Touch Screen has no power). To power up the device, ensure that the battery is charged, or the dock's power cord is connected to the dock and the Touch Screen is properly seated in the dock.
- **Suspend:** The screen is dark, but the Power indicator is lit. To wake up the device, press any button or tap the Touch Screen.
- **Screensaver:** The screensaver is running. To wake up the device, tap the screen.
- **Wake:** The screen displays anything other than a

screensaver. To force the device into Sleep mode, press and release the **Power** button.

Configure the Network Settings

You must configure the network settings on this Touch Screen so it can communicate with the other devices in the Control4 system.

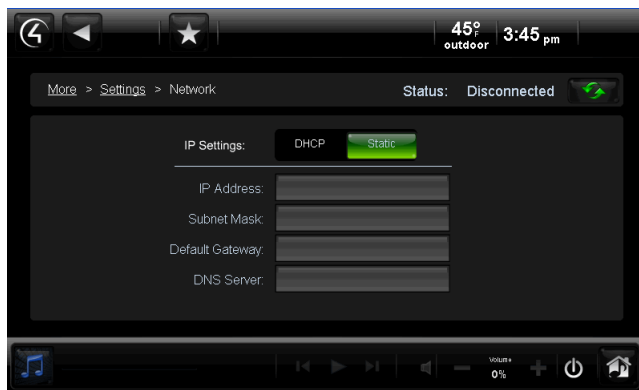
To configure the network settings for this device:

- 1 If using a wireless network, ensure that the WiFi WAP is on the same network as the Control4 Controller.
- 2 Gather the following wireless network information from your WAP:
 - SSID (Service Set Identifier).
 - WEP/WPA/WPA2 security key, if enabled.
 - IP Addressing Requirements: The default is DHCP (with dynamic addresses). If you need to use a static IP address instead, you must provide a network IP address for this device.
- 3 On the Touch Screen, tap **More > Settings > Network**. If you want to use wireless, under Wireless, select **Enable**; otherwise, skip to Step 4.

Follow these steps to configure a wireless setup:

- a If you don't see the network you want, select **Other**.
 - b At Network Name, select to add the SSID or name of the wireless network when the keyboard appears.
 - c At Security, select **None**, **WEP**, or **WPA**.
 - d At Password, type the **password** given to you by the person who set up the customer's wireless network (Control4 Dealer).
 - e Select **Connect**. Notice that the IP settings change.
- 4 The IP address is set to **DHCP** by default. If you need to set a static IP address instead, complete the following steps; otherwise, you are finished with these steps.
 - a On the Network page, tap **Static** (see Figure 8).

Figure 8. Static IP Address



- b** Select each box one at a time, and type the address: IP Address, Subnet Mask, Default Gateway, Preferred DNS, and Alternate DNS.
- c** When the keyboard appears, type the address, and then tap **Done**.
- d** Tap **OK** to return to the Network page.

You can now connect to a Control4 Director running on a Control4 device on the network.

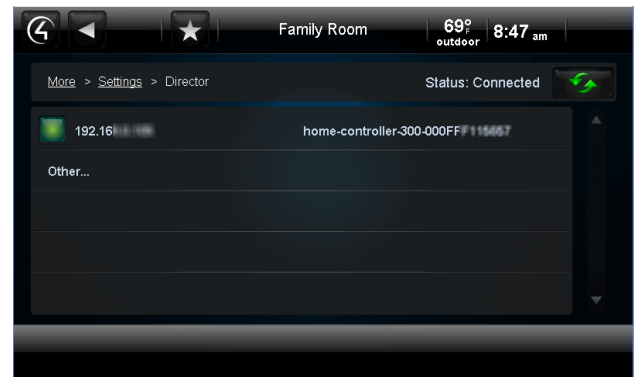
Connect to Director from the Touch Screen



NOTES: (1) The Touch Screen's controls are auto-populated by a project on the Controller to which it connects. If the subsystem buttons are not lit, and no default room displays on the Touch Screen, you are not connected to a Controller. (2) Ensure that the devices are added to Composer and identified in the project. See "Configure in Composer" for details.

- 1** On the Home page, tap **More > Settings**.
- 2** Tap **Director**.
- 3** If the Director page does not display, the Director view has probably been disabled; you must provide a password to enable it.
 - If you need the password, contact your Control4 Dealer.
 - If you have the password, tap **Config > Disable View**, enter the password, and then tap **Director** to deselect it. Tap the **Director** button again, and you should be able to view the Director page.
- 4** In the Director list of IP addresses, tap on your Controller's IP address. The screen displays your current connections (Figure 9).

Figure 9. Controller Address



- 5** Verify that the Name, IP Address, and default location (room) display on the Touch Screen to ensure that you have all of the correct connections.

Configure in Composer

Using Composer Pro, add the driver for the 7" Portable Touch Screen to your project. If the correct driver doesn't appear for you to add it, right click a driver in the My Drivers tab, and then select **Restore Default List** to refresh the list. See *Composer Pro Getting Started* for details.

- 1** Start Composer and connect to a Director.
- 2** Add the Touch Screen object to the project:
 - a** In the System Design View (default view) project tree (left pane), highlight the room where the Touch Screen resides.
 - b** Under My Drivers, double-click **<7" Portable Touch Screen>**.
- 3** Identify the device:
 - a** Click **Connections > Network** tab.
 - b** In the IP Network Connections list (center pane), highlight **Touch Screen - 7" Portable**, and then click **Identify**.
 - c** When prompted, go to the Touch Screen and press the bottom button on the right side, as indicated on the Identify screen in Composer, to identify the device to the network.
 - d** When the address displays in Composer, click **Close**.

Power Off

To power off the Touch Screen, press and hold the **Power** button for at least five (5) seconds, and then

wait a few more seconds for the device to turn off.

Battery Instructions

Should the battery ever need to be replaced, contact your Control4 representative.

Battery Charging

For safety reasons, the battery is shipped only partially charged. When you are ready for use, fully charge the battery in its the dock for at least four (4) hours.

If you remove the Touch Screen from the dock for long periods of time, the Touch Screen turns off. In this case, insert the Touch Screen into the dock again to recharge the Touch Screen. A red or orange LED indicates that it's charging. See "LED Indicators" for more details about the LEDs.

Cleaning the Touch Screen and Dock

- 1 Unplug the power jack from the dock.
- 2 Use a soft, damp cloth to wipe off the surface.

Troubleshooting

If you experience operational problems with the Touch Screen, read the following sections for system troubleshooting. If problems persist, please contact your Control4 Dealer or your Control4 representative.

Battery Operation Problems

If battery is low...

- Recharge the battery as soon as possible.
- Dock the Touch Screen (if using as a portable), and continue to use the Touch Screen in its dock until fully charged.

If the Touch Screen turns off automatically...

- Check whether the battery power is low or completely drained.
- Check whether the system is in Suspend mode (see "Touch Screen Modes").
- Tap the screen to check whether the display will activate.
- Plug in the DC power adapter or PoE cable to charge the battery.

If the Touch Screen doesn't turn on when it's not connected to the dock...

- The battery power may be too low to run the Touch Screen. Try connecting it to the dock to recharge it.

Display Problems

If the screen appears blank...

- Press the **any** button or tap the Touch Screen to wake it up.

System Operation Problems

If the Touch Screen is not responding...

- Always try to power the Touch Screen off before resetting the Touch Screen. Reset the device by pressing the **Reset/Restore** pinhole on the top of the screen. You may need to use an unbent paperclip to press the button.



CAUTION! The microphone holes look similar to the Reset/Restore pinhole. Inserting a paperclip into these pinholes will permanently damage the microphones. See Figure 2.

- Unplug the dock and plug it back in.
- If pressing the **Reset/Restore** pinhole button does not solve the problem, as a last resort, perform a factory restore. Press and hold the Reset/Restore pinhole button (see Figure 2 - Top View for the location) until the Power LED begins to blink rapidly. This will reset all configurations. The factory restore process may take 3-5 minutes to complete.

If the Touch Screen is damaged...

- Contact the Control4 Dealer or Reseller from which you purchased the Touch Screen.

If you have network connection problems...

- View the system's wireless status by checking the WiFi indicator on the Touch Screen's navigator.
- Make sure you've provided the required network configuration information described in "Configure the Network Settings."
- Ensure that the same key is being used on the Touch Screen and at the WAP.
- Make sure the WAP is connected to the proper network jack while it is functioning in the network infrastructure mode.

Warnings



WARNING! To avoid bodily harm, understand and follow these safety precautions before operating this Touch Screen:

- Using worn-out or damaged power cords may result in electric shock or fire.
- Always contact an authorized Control4 service provider for assistance if any repair or adjustment is required.

Avertissement! Pour éviter des dommages physiques, comprenez et suivez ces mesures de sécurité avant d'actionner l'écran tactile Control4® sans fil:

- Utilisant usé ou endommagé les cordons de secteur peuvent avoir comme conséquence la décharge électrique ou le feu.
- Entrez en contact avec toujours un fournisseur des services Control4® autorisé pour l'aide si n'importe quelle réparation ou ajustement est exigée.

Warnung! Um Körperverletzung zu vermeiden, verstehen Sie und folgen Sie diese Sicherheitsanweisungen bevor Sie den drahtlosen Control4® Touch Screen betreiben:

- Unter Verwendung abgedroschenen oder beschädigt kann Netzanschlusskabel Elektroschock oder Feuer ergeben.
- Treten Sie immer mit einem autorisierten Control4® Dienstbringer für Unterstützung in Verbindung, wenn irgendeine Reparatur oder Justage angefordert wird.



CAUTION! To avoid data loss or equipment damage, understand and follow these safety precautions before operating this Touch Screen:

- Do not use or place the Touch Screen near sources of heat or expose it to direct sunlight for an extended period of time. Store it in a cool and dry place.
- Do not use pens or sharp objects to write on the screen.

Attention! Pour éviter la perte de données ou les dommages aux équipements, comprenez et suivez ces mesures de sécurité avant d'actionner le Control4® 7" ; Écran tactile tenu dans la main :

- Ne laissez pas le paquet de batterie entrer en contact avec d'autres objets en métal.
- N'utilisez pas ou ne placez pas l'écran tactile près des sources de chaleur ou ne l'exposez pas à la lumière du soleil directe pendant une période prolongée.
- Stockez-le dans un endroit frais et sec. N'employez pas les stylos ou les objets pointus pour écrire sur l'écran.

Vorsicht! Um Datenverlust oder Ausrüstungsschaden zu vermeiden, verstehen Sie und vor dem Betrieb des Control4® 7" folgen Sie diese Sicherheitsanweisungen; Touch Screen:

- Lassen Sie den Batteriesatz mit anderen Metallgegenständen nicht in Verbindung treten.
- Benutzen Sie oder setzen Sie den Touch Screen nicht nahe Quellen der Hitze oder setzen Sie ihn direktem Tageslicht während eines ausgedehnten Zeitabschnitts aus. Speichern Sie es in einem kühlen und trockenen Platz.
- Benutzen Sie nicht Federn oder scharfe Gegenstände, um auf den Schirm zu schreiben.



IMPORTANT! Do not use pens or sharp objects to navigate or make selections on the Touch Screen. To select an item or scroll through a list, use your fingertip.

Important! N'employez pas les stylos ou les objets pointus pour diriger ou pour faire des choix sur l'écran. Pour choisir un article ou un rouleau par une liste, employez votre bout du doigt.

Wichtig! Benutzen Sie nicht Federn oder scharfe Gegenstände, um oder Vorwählern auf dem Schirm zu bilden zu steuern. Um ein Einzelteil oder eine Rolle durch eine Liste

vorzuzählen, benutzen Sie Ihre Fingerspitze.



IMPORTANT! Improper use or installation can cause LOSS/DAMAGE OF PROPERTY.

Important! L'utilisation ou l'installation inexacte peut causer LOSS/DAMAGE DE PROPRIÉTÉ.

Wichtig! Unsachgemäßer Gebrauch oder Installation können LOSS/DAMAGE DER EIGENSCHAFT verursachen.



IMPORTANT! Using this product in a manner other than outlined in this document voids your warranty. Further, Control4 is NOT liable for any damage incurred with the misuse of this product. See "Warranty."

Important! Utilisant ce produit en quelque sorte autre que décrit dans ce document vide votre garantie. De plus, Control4 n'est pas responsable d'aucun dommage encouru avec l'abus de ce produit. Voyez que «Warranty.»

Wichtig! Das Verwenden dieses Produktes in gewissem Sinne anders als umrissen in diesem Dokument hebt Ihre Garantie auf. Weiter ist Control4 NICHT für irgendeine Beschädigung verantwortlich, die mit der Fehlanwendung dieses Produktes genommen wird. Sehen Sie, daß "Warranty."



WARNING! To reduce the risk of fire or electrical shock, do not expose this apparatus to rain or moisture.

Avertissement! Pour réduire le risque du feu ou de choc électrique, n'exposez pas cet appareil à la pluie ou à l'humidité.

Warnung! Um die Gefahr des Feuers oder des elektrischen Schlages zu verringern, setzen Sie diesen Apparat nicht Regen oder Feuchtigkeit aus.

Regulatory/Safety Information

To review regulatory information for your particular Control4 products, see the information located on the Control4 website at: <http://www.control4.com/regulatory/>.

Patent Information

Protected under U.S. Patents 7,335,845, 7,106,261 and licensed under U.S. Patents 5,905,442 and 5,982,103

Warranty

Limited 2-year Warranty. Refer to <http://www.control4.com/warranty>.

About this Document

Part Number: 200-00238, Rev A, 11/01/2011, Draft 7



Regulatory Compliance and Safety Information for Control4 Model C4-TSMC7-EN-BL & C4-TSTTC7-EN-BL.

Electrical Safety Advisory

Important Safety Information

Read all safety information before using this product.

1. Read these instructions.
2. Keep these instructions.
3. Heed all warnings.
4. Follow all instructions.
5. Do not use this apparatus near water.
6. Clean only with dry cloth.
7. Do not block any ventilation openings. Install in accordance with the manufacturer's instructions.
8. Do not install near any heat sources such as radiators, heat registers, stoves, or other apparatus (including amplifiers) that produce heat.
9. Do not defeat the safety purpose of the polarized or grounding-type plug. A polarized plug has two blades with one wider than the other. A grounding type plug has two blades and a third grounding prong. The wide blade or the third prong is provided for your safety. If the provided plug does not fit into your outlet, consult an electrician for replacement of the obsolete outlet.
10. Protect the power cord from being walked on or pinched particularly at plugs, convenience receptacles, and the point where they exit from the apparatus.
11. Only use attachments/accessories specified by the manufacturer.
12. Use only with the cart, stand, tripod, bracket, or table specified by the manufacturer, or sold with the apparatus. When a cart is used, use caution when moving the cart/apparatus combination to avoid injury from tip-over.
13. Unplug this apparatus during lightning storms or when unused for long periods of time. This equipment uses AC power which can be subjected to electrical surges, typically lightning transients which are very destructive to customer terminal equipment connected to AC power sources. The warranty for this equipment does not cover damage caused by electrical surge or lightning transients. To reduce the risk of this equipment becoming damaged it is suggested that the customer consider installing a surge arrester.
14. Refer all servicing to qualified service personnel. Servicing is required when the apparatus has been damaged in any way, such as power-supply cord or plug is damaged, liquid has been spilled or objects have fallen into the apparatus, the apparatus has been exposed to rain or moisture, does not operate normally, or has been dropped.
15. Use the mains plug to disconnect the apparatus from the AC mains. The mains plug shall remain readily operable.
16. To completely disconnect unit power from the AC mains, disconnect the unit's power cord from the mains socket. To reconnect power, plug the unit's power cord into the mains socket following all safety instructions and guidelines.
17. Caution: Danger of explosion if lithium battery is incorrectly displaced. Replace only with the same or equivalent type. Battery should only be replaced by qualified personnel and is not intended as a user serviceable part. Do not expose batteries or battery pack to excessive heat such as prolonged sunlight, fire or other heat sources.

18. Never push objects of any kind into this product through cabinet slots as they may touch dangerous voltage points or short out parts that could result in fire or electric shock.
19. This product can interfere with electrical equipment such as tape recorders, TV sets, radios, computers and microwave ovens if placed in close proximity.



The lightning flash and arrow head within the triangle is a warning sign alerting you of dangerous voltage inside the product



Caution: To reduce the risk of electric shock, do not remove cover (or back). No user serviceable parts inside. Refer servicing to qualified service personnel.



The exclamation point within the triangle is a warning sign alerting you of important instructions accompanying the product.

See marking on bottom / back of product



Warning!: To reduce the risk of electrical shock, do not expose this apparatus to rain or moisture

AVERTISSEMENT! Pour réduire le risque de choc électrique, n'exposez pas cet appareil à la pluie ou à l'humidité.

WARNUNG! Um das Risiko des elektrischen Schlages zu verringern, setzen Sie diesen Apparat nicht Regen oder Feuchtigkeit aus.

Save these instructions

Compliance of this equipment is confirmed by the following label that is placed on the equipment:



USA & Canada Compliance

FCC Part 15, Subpart B / ICES-003 Unintentional Emissions Interference Statement

This equipment has been tested and found to comply with the limits for a Class B digital device, pursuant to Part 15 of the FCC rules and Industry Canada ICES-003. These limits are designed to provide reasonable protection against harmful interference when the equipment is operated in a residential installation. This equipment generates uses and can radiate radio frequency energy and, if not installed and used in accordance with the instructions, may cause harmful interference to radio communications. However, there is no guarantee that interference will not occur in a particular installation. If this equipment does cause harmful interference to radio or television reception, which can be determined by turning the equipment off and on, the user is encouraged to try to correct the interference by one or more of the following measures:

- Reorient or relocate the receiving antenna.



- Increase the separation between the equipment and receiver.
- Connect the equipment into an outlet on a circuit different from that to which the receiver is connected.
- Consult the dealer or an experienced radio/TV technician for help.

This device complies with part 15 of the FCC rules and Industry Canada ICES-003. Operation is subject to the following two conditions: (1) This device may not cause harmful interference, and (2) this device must accept any interference received, including interference that may cause undesired operation.

Le présent appareil est conforme aux CNR d'Industrie Canada applicables aux appareils radio exempts de licence. L'exploitation est autorisée aux deux conditions suivantes : (1) l'appareil ne doit pas produire de brouillage, et (2) l'utilisateur de l'appareil doit accepter tout brouillage radioélectrique subi, même si le brouillage est susceptible d'en compromettre le fonctionnement.

IMPORTANT! Any changes or modifications not expressly approved by the party responsible for compliance could void the user's authority to operate this equipment.

IMPORTANT! Tous les changements ou modifications pas expressément approuvés par la partie responsable de la conformité ont pu vider l'autorité de l'utilisateur pour actionner cet équipement.

Compliance of this equipment is confirmed by the following label that is placed on the equipment:



FCC Part 15, Subpart C / RSS-210 Intentional Emissions Interference Statement

Compliance of this equipment is confirmed by the following certification numbers that are placed on the equipment:

Notice: The term "FCC ID:" and "IC" before the certification number signifies that FCC and Industry Canada technical specifications were met.

FCC ID: R33C4TSMC7
IC: 7874A-C4TSMC7

This equipment must be installed by qualified professionals or contractors in accordance with FCC Part 15.203 & IC RSS-210, Antenna Requirements. Do not use any antenna other than the one provided with the unit.

RF exposure warning

This equipment must be installed and operated in accordance with provided instructions and must not be co-located or operating in conjunction with any other antenna or transmitter. End-users and installers must be providing with antenna installation instructions and transmitter operating conditions for satisfying RF exposure compliance.

Radio Frequency (RF) Exposure Information

The radiated output power of the Wireless Device is below the Industry Canada (IC) radio frequency exposure limits. The Wireless Device should be used in such a manner such that the potential for human contact during normal operation is minimized.

This device has been evaluated for and shown compliant with the IC Specific Absorption Rate ("SAR") limits in portable exposure conditions.

Canada's REL (Radio Equipment List) can be found at the following web address:

<http://www.ic.gc.ca/app/sitt/reltel/srch/nwRdSrch.do?lang=eng>

Additional Canadian information on RF exposure also can be found at the following web address: <http://www.ic.gc.ca/eic/site/smt-gst.nsf/eng/sf08792.html>

Informations concernant l'exposition aux fréquences radio (RF)

La puissance de sortie émise par l'appareil de sans fil est inférieure à la limite d'exposition aux fréquences radio d'Industry Canada (IC). Utilisez l'appareil de sans fil de façon à minimiser les contacts humains lors du fonctionnement normal.

Ce dispositif a été évalué et démontré conforme à la Specific Absorption Rate IC ("SAR") des limites dans des conditions d'exposition portatifs.

Ce périphérique est homologué pour l'utilisation au Canada. Pour consulter l'entrée correspondant à l'appareil dans la liste d'équipement radio (REL - Radio Equipment List) d'Industry Canada rendez-vous sur:

<http://www.ic.gc.ca/app/sitt/reltel/srch/nwRdSrch.do?lang=eng>

Pour des informations supplémentaires concernant l'exposition aux RF au Canada rendez-vous sur : <http://www.ic.gc.ca/eic/site/smt-gst.nsf/eng/sf08792.html>



European Compliance

Conformity of the equipment with the guidelines below is attested by the application of the CE mark.



CE Declaration of Conformity

Manufacturer's Name: CONTROL4 CORPORATION
Manufacturer's Address: 11734 S. ELECTION ROAD SUITE 200
SALT LAKE CITY
UT 84020 USA

EU Representative Name: CONTROL4 EMEA LIMITED
EU Representative Address: UNIT3, GREEN PARK BUSINESS CENTRE
SULTON-ON-THE FOREST
YORK YO61 IET, UNITED KINGDOM

Product Name(s): Touch Screen Interface
Brand: Contol4
Model(s): C4-TSMC7-EN-BL & C4-TSTTC7-EN-BL

Product Standard(s) to which Conformity of the Council Directive(s) is declared:

EMC - 2004/108/EC "Electromagnetic Compatibility (EMC) Directive":
(Emissions) EN 55022:2006, **(Immunity)** EN 55024:1998, EN 301 489-1:2008, EN 301 489-17:2009, EN 61000-3-2:2004 & EN 61000-3-3:2002

Safety – 206/95/EC "Low Voltage Directive (LVD)":
EN 60950-1:2006 (2nd Edition)

Telecom & Radio - 1999/5/EC Radio equipment and Telecommunications Terminal Equipment (R&TTE) Directive:
EN 300 328 V1.7.1 (2006-10)

RoHS - 2002/95/EC Restriction of the Use of certain Hazardous Substances in Electrical and Electronic Equipment (EEE) & WEEE - 2002/96/EC Waste of Electrical and Electronic Equipment (EEE).

We, the undersigned, hereby declare that the equipment specified above conforms to the above directives and standards. Date of Issue: December 31, 2011

Legal Representative

Signature

Roger Midgley
Sr. Regulatory Compliance Engineer



National Restrictions

This product may be used in all EU countries (and other countries following the EU directive 1999/5/EC) without any limitation except for the countries mentioned below:

Ce produit peut être utilisé dans tous les pays de l'UE (et dans tous les pays ayant transposés la directive 1999/5/CE) sans aucune limitation, excepté pour les pays mentionnés ci-dessous:

Questo prodotto è utilizzabile in tutte i paesi EU (ed in tutti gli altri paesi che seguono le direttive EU 1999/5/EC) senza nessuna limitazione, eccetto per i paesi menzionati di seguito:

Das Produkt kann in allen EU Staaten ohne Einschränkungen eingesetzt werden (sowie in anderen Staaten die der EU Direktive 1999/5/CE folgen) mit Ausnahme der folgenden aufgeführten Staaten:

France

In case the product is used outdoors, the output power is restricted in some parts of the band. See [Table 1](#) below or check <http://www.arcep.fr/> for more details.

Dans la cas d'une utilisation en extérieur, la puissance de sortie est limitée pour certaines parties de la bande. Voir la table ci-dessous ou visitez <http://www.arcep.fr/> pour de plus amples details

Table 1 Applicable Power Levels in France		
Location	Frequency Range (MHz)	Power (EIRP)
Indoor (No restrictions)	2400-2483.5	100 mW (20 dBm)
Outdoor	2400-2454	100 mW (20 dBm)
	2454-2483.5	10 mW (10 dBm)

Recycling

Control4 understands that a commitment to the environment is essential for a health life and sustainable growth for future generations. We are committed to supporting the environmental standards, laws, and directives that have been put in place by various communities and countries that deal with concerns for the environment. This commitment is represented by combining technological innovation with sound environmental business decisions.

WEEE Compliance

Control4 is committed to meeting all requirements of the Waste Electrical and Electronic Equipment (WEEE) directive (2002/96/EC). The WEEE directive requires the manufacturers of electrical and electronic equipment who sell in EU countries: (1) label their equipment to notify customers that it needs to be recycled, and (2) provide a way for their products to be appropriately disposed of or recycled at the end of their product lifespan. For collection or recycling of Control4 products, please contact your local Control4 representative or dealer.



Australia / New Zealand Compliance

Compliance of this equipment is confirmed by the following label that is placed on the equipment:



South Korea Compliance

해당무선설비기기는 운용
중 전파혼신가능성이 있음

English Translation: This radio device has the possibility of radio interference during operation.

2.4GHz RF Warning Message:

해당무선설비기기는 운용 중 전파혼신가능성이 있으므로 인명안전과 관련된 서비스는 할 수
없습니다

English Translation: This radio device is not allowed to be used for human safety since it has
the possibility of radio interference during operation.

EMC (Class B) Warning Message:

이 기기는 가정용(B급) 전자파 적합기기로서 주로 가정에서 사용하는 것을 목적으로 하며, 모든
지역에서 사용할 수 있습니다.

English Translation: The equipment is for home use (Class B), and has acquired electromagnetic
conformity registration. So it can be used not only in residential area but also other areas.

About this Document

Part Number 200-00293 Rev A, 12/9/2011

Warranty/Regulatory Card

Warranty Information

Control4® Corporation ("Control4") warrants that at the time of first-consumer sale, this product will be free from defects in material and manufacture. Control4 further warrants that for a period of 2 years (24 months) after initial consumer sale, the product will function in accordance with its specification, provided that it is installed and maintained under normal and proper use. This warranty extends only to products purchased directly from Control4 or an Authorized Control4 Reseller. If the product proves to be defective in material or workmanship during the warranty period, it may be returned to the place of purchase and Control4 will, at its sole option, repair or replace the product with a like product. This warranty provides the consumer purchaser with specific legal rights, which may vary per state or country. For complete warranty information, including details on consumer legal rights as well as warranty exclusions, visit www.control4.com/warranty.

Except as specifically provided above and to the maximum extent allowed by law, Control4 disclaims all warranties and conditions whether express, implied, or statutory as to any matter whatsoever including, without limitation, title, non infringement, condition, merchantability or fitness for any particular or intended purpose.

Except as expressly provided above and to the maximum extent allowed by law, Control4 shall not be liable for any special, indirect or consequential damages (including without limitation, loss of profit, loss of business, loss of information, financial loss, personal injury, loss of privacy or negligence) which may be caused by or related to , directly or indirectly, the use of a product or service, the inability to use a product or service, inadequacy of a product or service for any purpose or use thereof or by any defect or deficiency therein even if Control4 or an authorized Control4 dealer has been advised of the possibility of such damages or losses.

Regulatory Information

To review regulatory information for your particular Control4 products, see the information located on the Control4 website at: <http://www.control4.com/regulatory>.

GPL Source Code

The GPL source code in this product is available as a free download from <http://www.control4/gpl/>.

Product Documentation

To view or print product Installation, Setup, or User guides in PDF format, see the Documentation page on the Control4 Dealer website at: <http://www.control4.com/dealer/products/documentation/> (login required).

