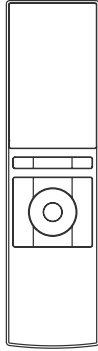


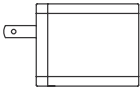
**NEEO**<sup>®</sup>  
BY CONTROL4

Quick Start Guide

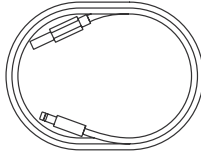
## What's in the box



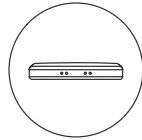
Remote



UL & Power Adapter



Power Cable



Charging Dock



CN



AU



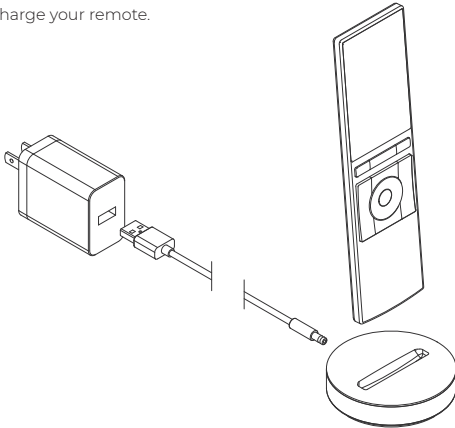
UK



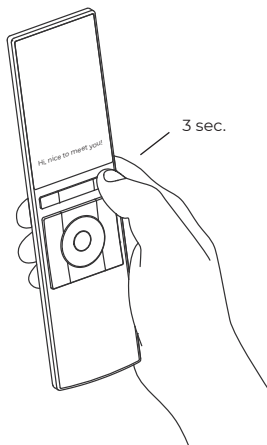
EU

## Setting up the remote

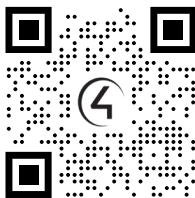
- 1 Charge your remote.



- 2 Press and hold the power button, and follow the on-screen instructions.



For product technical support contact your  
Control4 Smart Home Pro  
or visit  
[help.control4.com](http://help.control4.com)



**NEEO<sup>®</sup>**  
BY CONTROL4

Warranty and terms of use: [www.control4.com/legal](http://www.control4.com/legal)  
Regulatory information use: [www.control4.com/o/regulatory](http://www.control4.com/o/regulatory)  
For other concerns, contact Control4 Customer Advocacy at  
[customers@control4.com](mailto:customers@control4.com) or  
[www.control4.com/company/contact-us/support](http://www.control4.com/company/contact-us/support)

Copyright ©2019 Control4 Corporation