

Control

Mini Touch Screen User Guide

TSE-3.8C1-W



Disclaimer, Trademarks, and Copyright Information

Disclaimer

Control4® makes no representations or warranties with respect to the contents or use of this manual, and specifically disclaims any express or implied warranties of merchantability or fitness for any particular purpose. Control4 reserves the right to revise this publication and to make changes to its content, at any time, without obligation to notify any person or entity of such revisions or changes.

Control4 makes no representations or warranties with respect to any Control4 software, and specifically disclaims any express or implied warranties of merchantability or fitness for any particular purpose. Control4 reserves the right to make changes to any and all parts of Control4 software, at any time, without any obligation to notify any person or entity of such changes.

Trademarks

Control4 and the Control4 logo are registered trademarks of Control4 Corporation.

Other product and company names mentioned in this document may be the trademarks or registered trademarks of their respective owners.

Legal Notice

Gracenote. Music recognition technology and related data are provided by Gracenote. Gracenote is the industry standard in music recognition technology and related content delivery. For more information visit www.gracenote.com.

Copyright

Copyright © 2004-2005 Control4 Corporation. All rights reserved. No part of this publication may be reproduced, photocopied, stored on a retrieval system, or transmitted without the express written consent of the publisher.

Contact Information

Control4 Corporation
11734 S. Election Road, Suite 200
Salt Lake City, UT 84020 USA
<http://www.control4.com>

Mini Touch Screen User Guide
Part Number: 21-0124 Rev A Draft 7

Contents

Preface	About This Guide.....	1
	Notes, Tips, Cautions, and Warnings	1
	Safety Instructions	2
	Additional Resources	2
Chapter 1	Getting Started	3
	What You Can Do	3
	Become Familiar with the Device	4
	Start Mini Touch Screen	5
	About the Home Page	6
	Header Contents.....	7
	Display Area	8
	Quick-Control Tabs.....	10
	Subsystem Buttons.....	11
	Control Devices with Touch-Screen	
	Controls	12
Chapter 2	Play the Radio	15
	Access the Radio Page	15
	About the Radio Page.....	15
	Play a Radio Station	16
	Control the Radio	16
Chapter 3	Play Music	17
	Access the Music Page	17
	About the Music Page.....	17
	Browse.....	18
	Device Controls	19
	Play Music Stored in the System	19
	Choose from the Entire Database ..	20
	Sort or Filter the Database.....	20
	Create or Manage Playlists.....	20
	Play Music Loaded in a Device.....	21

Chapter 4	Watch TV.....	23
	Access the TV Page	23
	About the TV Page	23
	Broadcast Channels Page	23
	Video Device Pages	24
	Choose a Channel (TV or other Video Broadcast)	25
	Choose a Channel List Filter and Sort Option	25
Chapter 5	Watch a Video	27
	Access the Video Page.....	27
	About the Video Page.....	27
	Browse.....	28
	Cover Art.....	29
	Device Controls	29
	Play a Video Stored in the System	30
	Choose from the Entire Database ..	30
	Sort or Filter the Database.....	30
	Play a Video Loaded in an Attached Device.....	30
Chapter 6	Control Comfort	31
	Access the Comfort Page	31
	About the Comfort Page	31
	Change a Thermostat Setting.....	32
	Change Other Comfort Settings	32
	Set Wakeup Options.....	33
Chapter 7	Control Lights	35
	Access the Lights Page	35
	About the Lights Page	35
	Change a Light Setting	36
	Create a Lighting Scene	36
	Change a Lighting Scene	37
	Activate a Lighting Scene	38
	Delete a Lighting Scene.....	38

Chapter 8	View or Change Information	39
	Access the Info Page	39
	About the Info Page	39
	View Information “About” Mini Touch Screen	40
	Connect to a Director	41
	View or Change Network Information ..	41
	Set Screen Saver Options	41
	Change Skins	42
Chapter 9	Warranty and FCC Information.....	43
	Warranty	43
	One-Year Limited Hardware Warranty	43
	Software License Agreement and Limited Warranty.....	44
	FCC Statement	49
	Federal Communication Commission Interference Statement	49
	FCC Caution	50
Appendix A	Priority List for Media and Device Buttons...	51

About This Guide

Notes, Tips, Cautions, and Warnings

Note, Tip, Caution, and Warning paragraphs draw your attention to safe practices and additional information which may help you avoid losing data or time.



NOTE: These contain notes on related information about the current topic.



TIP: These provide tips that may save you time or effort.



CAUTION! These provide specific cautions about improper use of equipment or failure to follow safety instructions that may cause bodily injury. **DO NOT IGNORE A CAUTION!**



WARNING! These provide specific warnings about improper use of equipment or failure to follow safety instructions that may cause data loss or equipment damage. **DO NOT IGNORE A WARNING!**

Safety Instructions



CAUTION! To avoid bodily harm, understand and follow these safety precautions before operating the Control4 Mini Touch Screen:

- ▶ "Using worn-out or damaged power cords may result in electric shock or fire.
 - ▶ Avoid keeping a steady position when using the Mini Touch Screen for prolonged period of time. Periodic exercises and breaks are recommended to prevent any physical discomfort.
 - ▶ Always contact an authorized Control4 service provider for assistance if any repair or adjustment is required.
-



CAUTION! To avoid data loss or equipment damage, understand and follow these safety precautions before operating the Control4 Mini Touch Screen:

- ▶ Do not use or place the Mini Touch Screen near sources of heat or expose it to direct sunlight for an extended period of time. Store it in a cool and dry place.
 - ▶ Do not push or apply force to the TFT screen.
 - ▶ Do not use pens or sharp objects to write on the screen. Always use your finger or a standard stylus** to tap or draw on the TFT screen. (**A stylus is a pointed-end drawing tool available where electronic notepads or digital planners are sold.)
-

Additional Resources

For support, see *your authorized Control4 representative or reseller*, or *visit the Control4 Web Site: <http://www.Control4.com/>*.

CHAPTER 1 Getting Started

This chapter provides an orientation to the Control4 Mini Touch Screen displays and tasks that you can perform using the Mini Touch Screen. For all other navigation options, refer to the documentation that shipped with your device.

What You Can Do

Use Mini Touch Screen to navigate and control a Control4 system once it has been set up. (For setting up a Control4 system, refer to the documentation that shipped with your Control4 controller (such as *Media Controller Installation and User Guide*).

The general task you can accomplish using the Mini Touch Screen are:

- Choose a location to control
- Play a radio station
- Play stored music
- Watch TV
- Watch a video
- Control comfort
- Control lights
- View or change system information

Become Familiar with the Device



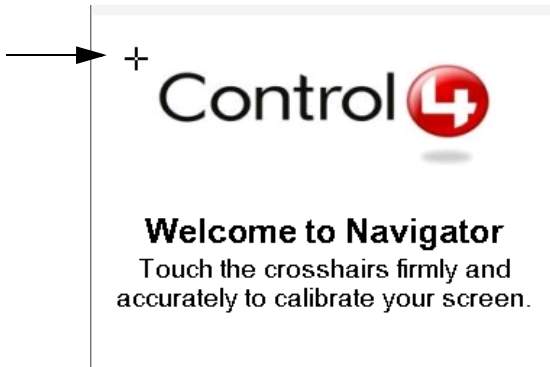
1. **Microphone:** This microphone is in place in anticipation of potential future features.
2. **Speaker:** The speaker is used for:
 - ▶ MP3 file playback (the music format to which stored CDs are converted)
 - ▶ Intercom (a potential future feature)
3. **Select Dial:** This dial is used during and after setup:
 - ▶ During setup: Press the select dial to have Mini Touch Screen identify itself to the system.
 - ▶ After setup: Rotate select dial to scroll through displays. Press select dial to choose currently highlighted item on the screen.
4. **Shortcut Button:** This backlit button can be programmed by your installer to perform any action or sequence of actions supported by the system.

Start Mini Touch Screen

1. Power up the Mini Touch Screen (according to its installation guide).

When you first power up the Mini Touch Screen and the system is initializing, the Mini Touch Screen displays “please wait” messages. Then you are instructed to calibrate the Mini Touch Screen.

2. Calibrate the Mini Touch Screen when prompted by the screen:
 - 2a. Touch the screen firmly and accurately at the point indicated by the crosshairs (see the following sample screen).

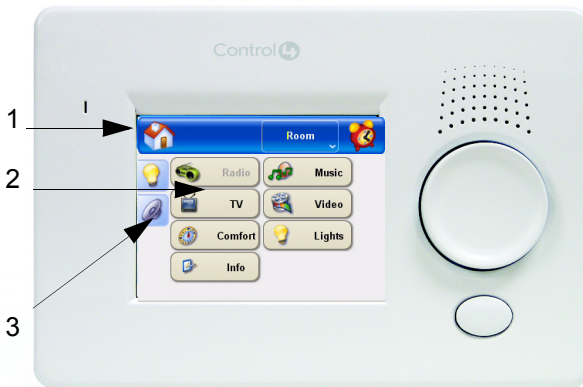


- 2b. Repeat Step 2a for each of the 4 subsequent points indicated by the crosshairs.

After initialization, the Home page displays (which includes the Day, Date, and Time). Thereafter, the last page accessed is displayed on the screen, unless a screen saver has been set and is currently running. If a screen saver has been set and is currently running, touch the screen to once again display the last page accessed.

3. From the Home page, choose a Director (the IP address of the controller where Director resides). To choose a Director, press System > Info > Director and then pick a Director from the list. Thereafter, the Mini Touch Screen assumes the same Director until you choose to change it.
4. Choose the location (room) you want to control from the drop-down list provided in the header. This is only required once. Thereafter, the Mini Touch Screen assumes the same location until you choose to change it.

About the Home Page



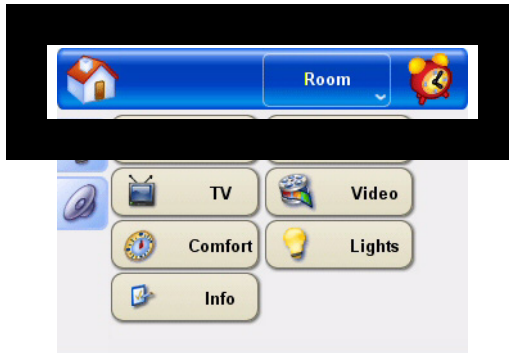
The Mini Touch Screen home page can be broken down into these parts:

1. Header Contents
2. Display Area
3. Quick-Control Tabs



NOTE: The instructions in this manual are based on the default skin. When you apply a different skin, your process steps will deviate from the ones documented in this manual. We recommend strongly using the manual to become familiar with the default user interface before changing skins.

Header Contents



Home Button

When you press the Home button, the Home page displays in the Display Area, which includes the Day, Date, and Time, or any pertinent system message.

Blank Space (or Current Subsystem Button)

When the Home page displays, the header space next to the System drop-down list is empty. When you choose a subsystem button, the subsystem button “moves” to the header and the subsystem’s default page is displayed. The subsystem button in the header is useful when you want to quickly jump to a new location within the subsystem.

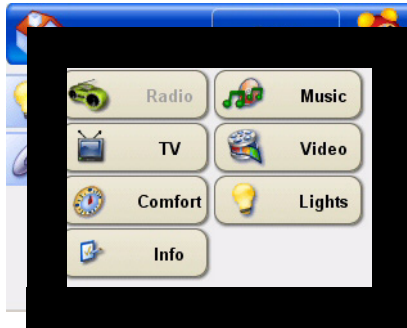
Location Button

Displays the room this device is currently associated with for system navigation and control. If this device has not yet been associated with a room, you will see a drop-

down arrow only (without a room name). The default room for this device is set during system setup, but you can choose a different room in the system at any time by pressing this button and choosing a new room from the list that is displayed in the Display Area.

Display Area

When you press the Home button, the Display area shows the subsystem buttons.



When you press a subsystem button (such as *Music*), the subsystem button “moves” to the header (next to Home) and the Display area shows all media and device buttons available for that subsystem (see the following example).



Media Buttons and Device Buttons

Media Buttons: Where broadcast or stored media are available, an applicable media button displays on the subsystem page. For example, the Radio page provides a *Broadcast Stations* button, which provides access to radio stations; the Music page provides a *Browse* button, which provides access to stored media. Where only device controls are needed (such as with lighting), no media button is displayed.

Device Buttons: Following the media buttons (where applicable) is any applicable device button, which is created automatically when the installer adds the device to the system. The button provides access to touch-screen controls for the device.

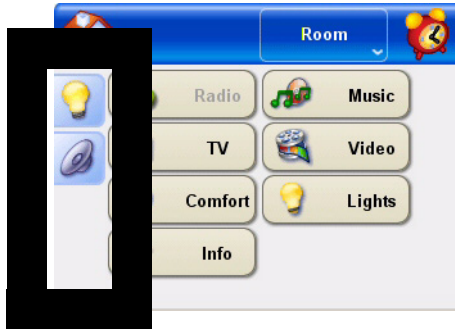
Your installer (or you) can name the device anything meaningful to users, but some typical device names are: TV, Satellite, DVD, VCR, Tuner, CD, and Tape. We recommend your installer give each device a unique name. For example, if the system has two DVD players, the installer might name one DVD-Family and the other DVD-Bedroom. When a device is renamed in the system, the corresponding button is automatically updated as well.

If more buttons are present than the display area can show, a page scroll bar is displayed to let you know there are more choices.

Order of Buttons

Media and device buttons are displayed in a pre-determined order according to a Control4-specified priority list. (If you would like to view the priority list, see “Priority List for Media and Device Buttons” on page 51.)

Quick-Control Tabs



Lights Tab

This tab displays an icon for each lighting load in the current location.

To quickly change light settings:

1. Press the *Lights* tab.

The tab contents is displayed. (You may need to scroll to see all of the items displayed.) All of the settings on this tab apply to individual loads (dimmers or switches) in the current location (or room). They may be:

- ▶ Sliders (% set specific level)
- ▶ Push-and-Hold (Ramp up/down)
- ▶ On and Off

2. Set individual load levels (touch, touch and drag, or touch and hold as needed to change settings).

Volume Tab

This tab provides the user these audio options:

- Up arrow** to increase audio volume
- Down arrow** to decrease audio volume
- Mute** to silence audio
- Off** to turn audio off.

To quickly change the audio or video volume of a device found in the specified location:

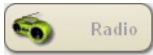
1. Press the *Volume* side tab.

The Volume page is displayed. The audio device (such as a receiver or TV) that is associated with this location are represented here with volume control options.

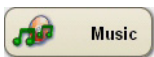
2. Choose a Volume controller option: Up, Down, Attenuate, Mute, or Off.

Subsystem Buttons

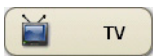
The complete collection of subsystem buttons are displayed in the display area whenever you press the System button in the header. Whenever you choose a subsystem button, that button will display in the header and serve as a shortcut button until you choose another subsystem, or until you press the Home button.



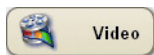
Radio: Provides access to radio broadcast stations for the current geographic location, including: AM, FM, and XM channels.



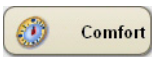
Music: Provides access to all music stored in the system (such as CDs that have been imported into Media Controller or CDs stored in a CD Changer) and provides control options for any media player in the current location (such as a CD player).



TV: Provides access to all available broadcast channels for the current geographic location, including local television, Satellite Network, and cable.



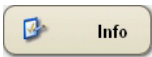
Video: Provides access to all available movies (video tapes or DVDs) for the selected location, and it provides filter options, such as only movies with a certain Actor, Director, Rating, or Genre.



Comfort: Displays all comfort-related control options for controllable devices (such as thermostats, fans, motorized curtains and blinds, or a fireplace).



Lights: Displays control options for all controllable lighting features for the selected zone, including lighting loads and scenes.



Info: Displays system information for this device, including software versions, current Director controller IP address), Network addresses, and screensaver options.

Control Devices with Touch-Screen Controls

Supported devices that are typically controlled with a remote control can be controlled using the touch-screen controls provided on the device control tab. When you install a supported device, the associated hardware driver populates the device-control page with Mini Touch Screen controls. The following diagrams are sample Mini Touch Screen controls.

Figure 1-1. Sample Audio Controls

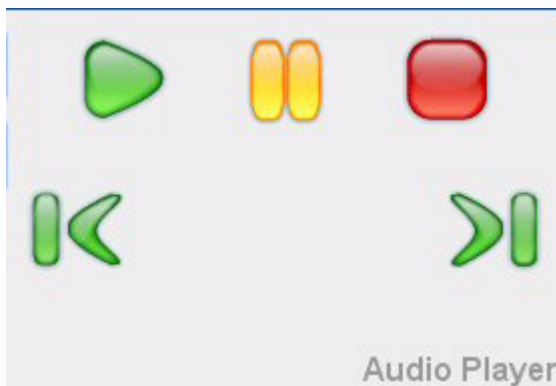



Figure 1-2. Sample Satellite Controls



CHAPTER 2 Play the Radio

Access the Radio Page

To access a Radio station broadcast or control the radio output, access the Radio page:

1. In the Mini Touch Screen header, press the System button.
2. In the display area, press the Radio button . The Radio page is displayed.

About the Radio Page

The Radio page provides a button for *Broadcast Stations* (see Figure 2-1), which displays all available radio broadcast stations for the selected location, and provides a tuner device button to access on-screen controls for AM, FM, XM, NET Radio, and Digital Cable.

Figure 2-1. Radio Page

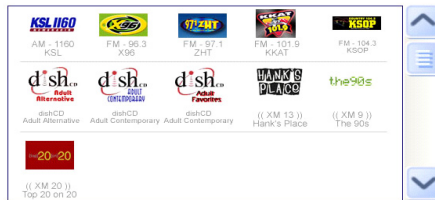


Play a Radio Station

To play a radio station:

1. On the Radio page, press Broadcast Stations.
2. View the list of available stations (see Figure 2-2). Use the dial to scroll through the list as needed.
3. Press a Station button to begin broadcasting that station.

Figure 2-2. Broadcast Stations Page



Control the Radio

To control the radio:

1. On the Radio page, press the tuner device button.

When you press the device button, on-screen controls for that tuner display in the display area. The control options depend on what your tuner supports, but may include:

Change sources: AM, FM, XM, or Digital Radio stations

Scan all stations or choose a specific station

Control volume

2. Press an on-screen control option for this tuner.




NOTE: For quick access to volume controls, use the Volume (speaker) side tab on the left of the screen. For more information, see “Quick-Control Tabs” on page 10.

CHAPTER 3 Play Music

Access the Music Page

To play stored or loaded music, or to manage the music database, access the Music page:

1. In the Mini Touch Screen header, press the System button.
2. In the display area, press the Music button . The Music page is displayed.

About the Music Page

The Music page allows you to browse or play all music stored in the system (such as CDs that have been imported into Media Controller or CDs stored in a CD Changer) and provides control options for any media player in the current location (such as a CD player). The Music page provides access to these related pages: Browse, Cover Art, and any audio player (device) available from the current location (such as Audio Player in Figure 3-1).

Figure 3-1. Music page



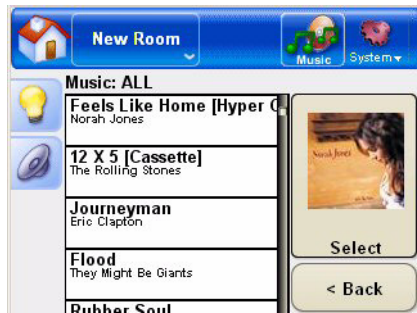
Browse

Playlist: Create or manage active playlist.

- ▶ Active Playlist > Audio Player Controls
- ▶ Other Active Playlists > Join or Back
- ▶ Saved Playlists > Load, Rename, Delete, or Back
- ▶ Audio Controls > Prev Track, Next Track, Save, Clear, Back, or Playlist Menu

All Music: List of all music available, including any information available on the highlighted item from your music database service (see Figure 3-2).

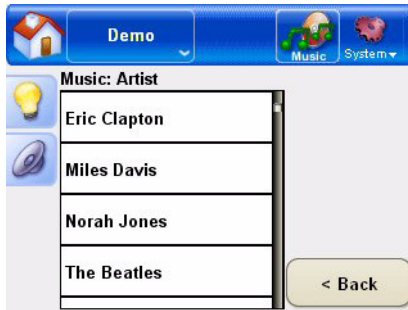
Figure 3-2. Browse > All Music page



Genre: List of genres (or categories) from which to choose, then view the resulting list enhanced with any information available on the highlighted item from your music database service.

Artist/Composer: List of artists and/or composers from which to choose (see Figure 3-3), then view the resulting list enhanced with any information available on the highlighted item from your music database service.

Figure 3-3. Browse > Artist/Composer page

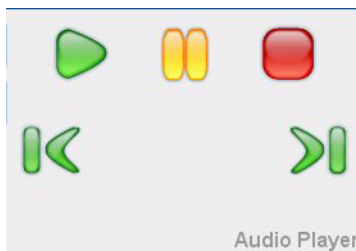


Alpha: Alphabetical list of all music available.

Device Controls

On-screen controls for audio players, such as: MP3 Players, CD Player/Changers, DVD Player/Changers, or TVs with Digital Audio Channels (see Figure 3-4 for a sample set of controls).

Figure 3-4. Sample Audio Player control page



Play Music Stored in the System

If you want to access music that has been included in the system database, such as music that has been imported

into a Control4 controller, then choose the applicable album, sort option, or playlist from the Music menus.

Choose from the Entire Database

To choose a music selection from the entire database, choose one of these options:

- ▶ Press *Cover Art* > *the graphical display of an album* > *Play* (green arrow).
- ▶ Press *Browse* > *All Music* > *the text display of an album* > *Play* (green arrow).

Sort or Filter the Database

To sort or filter the music database to narrow your choices, choose one of these options:

- ▶ **Genre:** Press *Browse* > *Genre* > *a genre*.
- ▶ **Artist/Composer:** Press *Browse* > *Artist/Composer* and then scroll to and choose an artist or composer name.
- ▶ **Alphabetical List of Titles:** Press *Browse* > *Alpha* and then scroll to and choose a letter.

Create or Manage Playlists

You can create user-specific playlists or perhaps a playlist for different moods. To create or manage a playlist in the music database, choose one of these options:

- ▶ **Manage Active Playlist:** Press *Browse* > *Playlist* > *Playlist*, then use the Audio Controls displayed to manage the current playlist.
- ▶ **Start Another Playlist:** Press *Browse* > *Playlist* > *Other Playlist*, then choose another playlist and press Join.
- ▶ **Manage Saved Playlist:** Press *Browse* > *Playlist* > *Saved Playlists* and then choose a playlist from the list and press Load, Rename, or Delete.
- ▶ **Audio Controls:** Press *Browse* > *Playlist* > *Audio Controls*, then use the Audio Controls displayed to Shuffle, Repeat, or otherwise control the playlist.

Play Music Loaded in a Device

If you loaded a music source (such as a CD) into an audio device (such as a CD player), then choose the device button located on the Music home page. When you press the device button, on-screen controls for the chosen device display in the Display Area.




NOTE: For quick access to volume controls, use the Volume (speaker) side tab on the left of the screen. For more information, see “Quick-Control Tabs” on page 10.

CHAPTER 4 Watch TV

Access the TV Page

To access a TV channel broadcast or to control a Video output device, access the TV page:

1. In the Mini Touch Screen header, press the System button.
2. In the display area, press the TV button  .
The TV page is displayed.

About the TV Page

The TV page includes buttons for *Broadcast Channels* and any video devices you have added to this location in the system, such as a television or satellite dish.

Figure 4-1. TV page



Broadcast Channels Page

This page displays all TV or other broadcast channels available to the current room, such as those available from a Dish network.

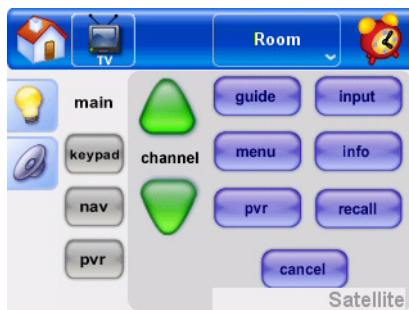
Figure 4-2. Broadcast Channels page



Video Device Pages

If the current location has one or more Video devices included in it, a corresponding button on the TV page provides access to each device page with on-screen controls. For example, if you have a television and a satellite network available at this location, you will have two additional buttons available: one to access television controls and one to access satellite network controls. See the following sample on-screen controls.

Figure 4-3. Sample On-Screen Controls: Satellite Dish





NOTE: For quick access to volume controls, use the Volume (speaker) side tab on the left of the screen. For more information, see “Quick-Control Tabs” on page 10.

Choose a Channel (TV or other Video Broadcast)

With the Broadcast Channels page selected, choose a channel from the list. The channel you choose is displayed on the default video device for the current room.


Choose a Channel List Filter and Sort Option

With the Broadcast Channels page selected, choose a filter option from the drop-down list provided (such as a Category, like News or Sports, or a Favorites list). You can also choose to sort your results in a variety of ways (see the “Arranged By” drop-down list).

CHAPTER 5 Watch a Video

Access the Video Page

To play a stored or loaded video or to manage the video database, access the Video page:

1. In the Mini Touch Screen header, press the System button.
2. In the display area, press the Video button . The Video page is displayed.

About the Video Page

The Video page displays all available movies (video tapes or DVDs) for the selected zone, and it provides filter options. The interface includes: Browse, Cover Art, and Video Player Controls (such as the Disc Changer in Figure 5-1).

Figure 5-1. Video page



Browse

All Movies: List of all movies available, including any information available on the highlighted item from your media database service (see Figure 5-2).

Genre: List of genres (or categories) from which to choose, then view the resulting list enhanced with any information available on the highlighted item from your media database service.

Director: List of directors from which to choose, then view the resulting list enhanced with any information available on the highlighted item from your media database service.

Actor: List of actors from which to choose, then view the resulting list enhanced with any information available on the highlighted item from your media database service.

Rating: List of ratings from which to choose (G, PG, PG-13, etc.), then view the resulting list enhanced with any information available on the highlighted item from your media database service.

Alpha: Alphabetical list of all movies available.

Figure 5-2. *Browse > All Movies* page



Cover Art

Graphical list of movies that has been enhanced with content from your media database service (see Figure 5-3).

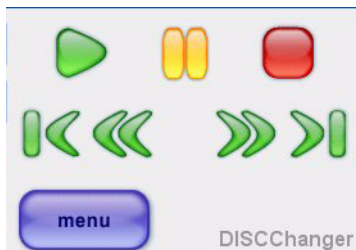
Figure 5-3. Cover Art page



Device Controls

Source controls, such as: DVD Player/Changer or a VCR. (See the sample control page in Figure 5-4.)

Figure 5-4. Sample Disc Changer Controls



NOTE: For quick access to volume controls, use the Volume (speaker) side tab on the left of the screen. For more information, see “Quick-Control Tabs” on page 10.

Play a Video Stored in the System

If you want to access a video source that has been included in the system database, such as a DVD in a DVD changer, simply choose the video source from the Video menus.

Choose from the Entire Database

To choose a video selection from the entire database, choose one of these options:

- ▶ **Press Cover Art** > *the graphical display of a video*. The video will begin playing when pressed.
- ▶ **Press Browse** > *All Movies* > *the text display of a video*. The video will begin playing when pressed.

Sort or Filter the Database

To sort or filter the media database to narrow your choices, choose one of these options:

- ▶ **Genre:** Press *Browse* > *Genre* > the chosen genre.
- ▶ **Director:** Press *Browse* > *Director*, then scroll to and choose a name.
- ▶ **Actor:** Press *Browse* > *Actor*, then scroll to and choose a name.
- ▶ **Rating:** Press *Browse* > *Rating* > the chosen rating.
- ▶ **Alphanumeric List of Titles:** Press *Browse* > *Alpha*, then scroll to and choose a letter.


Play a Video Loaded in an Attached Device

If you loaded a video source (such as a DVD) into a system device (such as a DVD player), then choose the device button located on the Video page. When you press the device button, on-screen control for the chosen device display in the Display Area.

CHAPTER 6 Control Comfort

Access the Comfort Page

To control comfort-related devices, access the Comfort page:

1. In the Mini Touch Screen header, press the System button.
2. In the display area, press the Comfort button .

The Comfort page is displayed.

About the Comfort Page

The Comfort page displays all comfort-related control options in the system that help to regulate the temperature, such as the thermostat, a fireplace, fans, or motorized blinds.

Figure 6-1. Comfort page



The *Comfort Control* button provides access to all controllable devices other than the thermostat, such as ceiling fans, motorized curtains and blinds, or a fireplace.

The *Thermostat* button, if available, provides access to heating and air conditioning controls.

The *Wakeup* button provides access to the room-specific “Wakeup” option controls.

Change a Thermostat Setting

To change a thermostat setting:

1. On the *Comfort* page, choose the Thermostat button. The *Thermostat* page is displayed and includes control options for:

Current temperature

Current set points for Heat and Cool

Press-and-hold buttons increase or decrease set point

Toggle switches for Heat/Auto/Cool/Off, and Fan On/Auto/Fan Off

Modes: Heat, Auto, Cool, and Off

Fan: On, Auto, and Off

Current Temp: (readout)

Heat: Up, (readout), Down

Cool: Up, (readout), Down

2. On the *Thermostat* page, press an on-screen control button to change a setting.

Change Other Comfort Settings

To change a comfort setting other than the thermostat:

1. On the *Comfort* page, press the Comfort Controls button. The *Comfort Controls* page is displayed,

which includes the appropriate control button for each applicable device. For example:

Fireplace can be set according to the variations the fireplace supports. The current status is represented on the screen. If the fireplace has low, medium, and high options, then those options are displayed on the screen. If it only supports On and Off modes, then an On/Off switch is displayed.

Motorized Blinds can be set according to the variations the blinds supports. The current status is represented on the screen: Up/Down or Open/Closed.

2. On the *Comfort Controls* page, press an on-screen control to change the current setting of a comfort-related device.

Set Wakeup Options

Wakeup



On 1 00 AM

Select Wakeup: (None)

To set a Wakeup option:

1. On the Comfort page, press the Wakeup button.
2. Check the On box by pressing anywhere on the On button.




3. Set the time by pressing the drop-down arrows.
4. Choose a Wakeup option by pressing the Select Wakeup drop-down arrow.

CHAPTER 7 Control Lights

Access the Lights Page

To control lights and lighting features, access the Lights page:

1. In the Mini Touch Screen header, press the System button.
2. In the display area, press the Lights button . The Light page is displayed.

About the Lights Page

The Lights page displays control options for all controllable lighting features for the selected location, including lighting loads and scenes.

Figure 7-1. Lights page



The interface includes access to these related pages:
The *Lighting* page provides access to control options for each light or lighting load.

The *Scenes* page lists all available lighting scenes and includes these scene-management options:

Execute Scene
Edit Scene
New Scene
Delete Scene

Scenes are a collection of preferred settings that can be quickly recalled at a certain time of day (such as 6 PM) or a certain activity (such as Bedtime).



NOTE: For quick access to lighting controls, use the Light side tab on the left of the screen. For more information, see “Quick-Control Tabs” on page 10.

Change a Light Setting

To change a Light setting:

1. On the *Lights* page, choose the Lighting button. The *Lighting* page is displayed, which includes the appropriate control button for each applicable device. For example:
 - Dimmers* or dimmable loads have a slider control
 - Switches* have an On/Off toggle.
2. Press an on-screen control to change the current setting of a lighting device.

Create a Lighting Scene

The Lights subsystem can be used to create, view, or edit lighting scenes for your system. You can choose to create a scene for a room, a floor, or an entire house or site. Or you can choose to make a global change to all lighting scenes or change only a selected scene.

To create a lighting scene:

1. On the *Lights* page, press the Scenes button. The *Lighting Scenes* page is displayed.
2. Press New Scene and create a scene using the scene-building options provided:
 - 2a. Select loads to include in this scene by selecting the loads in the *Available* box and then choosing the right-arrow to move them to the *Included* box.
 - 2b. Set individual load levels (touch, touch and drag, or touch and hold as needed).
 - 2c. Name the scene: Press in the text-entry box and then use the on-screen keyboard to enter a name for the scene.
 - 2d. Choose Save and then choose Execute to activate the scene.

Change a Lighting Scene

To change a lighting scene:

1. On the *Lights* page, press the Scenes button. The *Lighting Scenes* page is displayed.
2. Highlight an existing scene and then press the Edit Scene button. The chosen scene is displayed, showing:

Loads currently included in the selected scene with chosen setting
Text box with current name of scene
- 2a. Add or remove lighting loads from this scene by highlighting a load and then choosing the left or right arrow to move them.
- 2b. Change individual load levels (touch, touch and drag, or touch and hold as needed).

- 2c. To change the scene name, press in the text-entry box and then use the on-screen keyboard to enter the new name for the scene.
- 2d. Choose Save and then choose Execute to activate the scene.

Activate a Lighting Scene

To activate a lighting scene:

1. On the *Lights* page, press the Scenes button. The *Lighting Scenes* page is displayed.
2. Highlight an existing scene and then press the Execute Scene button. The chosen scene is immediately activated.

Delete a Lighting Scene


To delete a lighting scene:

1. On the *Lights* page, press the Scenes button. The *Lighting Scenes* page is displayed.
2. Highlight an existing scene and then press the Delete Scene button. The chosen scene is deleted from the list.

CHAPTER 8 View or Change Information

Access the Info Page

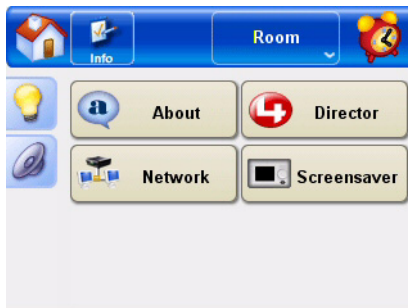
To view or change system information for this device, access the Info page:

1. In the Mini Touch Screen header, press the System button.
2. In the display area, press the Info button  .
The Info page is displayed.

About the Info Page

The Info Page displays system information for this device, including software versions, current Director controller IP address), Network addresses, and screensaver options.

Figure 8-1. Info page



The Info property pages or “buttons” are *About*, *Director*, *Network*, and *Screensaver*.

About provides a home for system information, such as Network version, Director IP, and Director version. It also

displays log information as needed with a scroll bar to review the entire log.

Director provides a list of all home network instances of Director (the brain of each Control4 system that resides on your controller). Here you must choose the IP address for the controller (such as Media Controller). Your home network may have just one controller or may have several to choose from.

Network provides network information, such as the IP address, the network parameters, and the DNS server.

Screensaver provides list of screensaver options for this device.

Skins provides optional “look & feel” options you can apply to your Mini Touch Screen interface. The concepts and feature supports are consistent from skin to skin, but the procedure steps vary from those documented in this manual.



NOTE: The instructions in this manual are based on the default skin. When you apply a different skin, your process steps will deviate from the ones documented in this manual. We recommend strongly that you use this manual to become familiar with the default user interface before changing skins.

View Information “About” Mini Touch Screen

To view Mini Touch Screen information:

1. On the *Info* page, press the About button. The *About* page is displayed, including the current Navigator version, Director’s IP address, Director version, and any applicable media version.
2. To exit the *About* page, press the Info button in the header.

Connect to a Director

To connect to a Director:

1. On the *Info* page, press the Director button. The *Connect to a Director* page is displayed.
2. In the *Connect to a Director* list of IP addresses, highlight your controller's IP address.
3. Press Connect. A "Connecting..." message first displays, then the address displays in the upper-right corner of the Mini Touch Screen display area to indicate your current connection.

View or Change Network Information

To view or change your network information:

1. On the *Info* page, press the Network button. The *Network* page is displayed, including the current IP address, MAC address, and DNS server.
2. To change the IP address setting, press the IP Address button, make changes as needed, and then press OK.
3. To change the DNS server, press the DNS Server button, make changes as needed, and then press OK.
4. To exit the Network page, press the Info button in the header.

Set Screen Saver Options

To set screen saver options:

1. On the *Info* page, press the Screen Saver button. The *Screen Saver* page is displayed, including a drop-down list of available screen savers, a text box for entering "Wait" minutes, and a Preview button.
2. Press the down arrow and choose a screen saver from the list.

3. To preview the screen saver, press Preview. Then press anywhere on the screen to return to the Screen Saver setup page.
4. Press inside the “Wait” text box. An on-screen keyboard is displayed.
5. Enter the number of minute the system should wait before activating the screen saver, then press Done.
6. To exit the Network page, press the Info button in the header.

Change Skins



NOTE: The instructions in this manual are based on the default skin. When you apply a different skin, your process steps will deviate from the ones documented in this manual. We recommend strongly that you use this manual to become familiar with the default user interface before changing skins.

1. On the Info page, press the Skins tab. The Skins page is displayed, which includes a drop-down list of skins available and a Reload Skin button.
2. Choose a skin from the drop-down list, then press Reload Skin.

9 Warranty and FCC Information

Warranty

Important: Warranty terms may be different with the country of purchase; contact Authorized Control4 Sales and Service office for detailed product warranty information.

One-Year Limited Hardware Warranty

Control4 warrants its Mini Touch Screen products to be free from defects in material and workmanship during the warranty period. If the Mini Touch Screen product proves to be defective in material or workmanship during the warranty period, Control4 will, at its sole option, repair or replace the product with a like product.

Should Control4 be unable to repair or replace the product within a reasonable amount of time, the customer's alternate exclusive remedy shall be a refund of the purchase price upon return of the product.

How long the warranty is effective:

Control4 Mini Touch Screens are warranted for one (1) year from the date of the first consumer purchase.

What the warranty does not cover:

- ▶ Misuses; unauthorized modification; opening for any reason except to perform an official upgrade using an proper tools/kit
- ▶ Operation or storage outside the environmental specifications for the product
- ▶ The battery, or damage caused by this battery
- ▶ In-transit damage and improper maintenance

- ▶ Physical damage to the unit, such as a cracked or broken screen or defect resulting from use of improper software, accessories, media, supplies, consumables, or such items not designed for use with the product.

Control4 makes no other express warranty, whether written or oral, with respect to this product. Any implied warranty of merchantability or fitness for a particular purpose is limited to the one-year duration of this written warranty.

Some customers do not have limitations on how long an implied warranty lasts, so the above limitation or exclusion may not apply to you. This warranty gives your specific legal rights, and you may also have other rights that vary from customer to customer.

Software License Agreement and Limited Warranty

Control4's Mini Touch Screen products contain pre installed software programs. Please read the following Control4 Software Product License Agreement before proceeding.



NOTE: Carefully read this License Agreement and the Limited Warranty statement before operating the equipment. The rights to the software are licensed, not sold. Control4 or its licensors continue to own all intellectual property rights to the software, and you will be granted certain rights to use the software upon your acceptance of this license. Rights in the software are offered only on the condition that you agree to all terms and conditions of the License Agreement. Operating the equipment indicates your acceptance of these terms and conditions. If you do not agree to the terms and conditions of the License Agreement, return the complete package for a full refund now.

Control4 Software Product License Agreement

The Control4 Software Product License Agreement shall govern the use of all software that is provided to you, the customer, as

part of this Control4 product - with the exception of Microsoft's software and products, which are licensed to you under the Microsoft End User License Agreement (EULA) contained in the Microsoft documentation. Any third party software supplier's warranty terms that may be found online, or in any documentation or other materials contained in the product packaging, shall govern the use of that third party software.

License Terms that Govern the Use of the Software

Use

You may only use the software on a single computer. You may not reverse, assemble, or decompile the software. Transaction in European Union member states: The prohibition against decompilation shall be subject to Directive 91/250/EEC.

Copies and Adaptations

You may make copies or adaptations of the software (a) for archival purposes, or (b) when copying or adaptation is an essential step in the use of the software with a computer so long as the copies and adaptations are used in no other manner.

You have no other rights to copy unless you acquire an appropriate license to reproduce which is available from Control4 for some software.

You agree that no warranty, free installation or free training is provided by Control4 for any copies or adaptations made by you.

All copies and adaptations of the software must bear the copyright notice(s) contained in or on the original.

Ownership

You agree that you do not have any title to or ownership of the software, other than ownership of physical media. You acknowledge and agree that the software is

copyrighted and protected under the copyright laws. You acknowledge and agree that the software or part thereof may have been developed by a third party software supplier named in the copyright notice(s) included with the software, who shall be authorized to hold you responsible for any copyright infringement or violation of this or their own License Agreement.

Transfer of Right in Software

You may transfer rights to the software to a third party only as part of the transfer of all your rights and only if you obtain the prior agreement of the third party to be bound by the terms of this License Agreement. Upon such a transfer, you agree that your rights to the software are terminated and that you will either destroy all your copies and adaptations or deliver them to the third party. Transfer to a U.S. government department or agency or to a prime or lower tier contractor in connection with a U.S. government contract shall be made only upon prior written agreement to terms required by Control4.

Sublicensing and Distribution

You may not lease, sublicense the software or distribute copies or adaptations of the software to the public in physical media, by telecommunication or at all without the prior written consent of Control4.

Termination

Control4 may terminate this software license for failure to comply with any of these terms, provided Control4 has requested you to cure the failure and you have failed to do so within thirty (30) days of such notice.

Updates and Upgrades

You agree that the software does not include updates and upgrades that may be available from Control4 under a separate support agreement.

Export Clause

You agree not to export or re-export the software or any copy or adaptation in violation of the U.S. Export Administration regulations or other applicable regulations.

U.S. Government Restricted Rights

The Software and Documentation have been developed entirely at private expense. They are delivered and licensed as "commercial computer software" as defined in DFARS 252.227-7013 (Oct 1988), DFARS 252.211-7015 (May) or DFARS 252.227-19 (Jun 1987) (or any equivalent agency regulation or contract clause), whichever is applicable. You have only those rights provided for such Software and Documentation by the applicable FAR or DFARS clause or the Control4 standard software agreement for the product involved.

Control4 Software Product Limited Warranty

Important: This Control4 Software Limited Warranty shall cover all software that is provided to you, the customer, as part of the Control4 product, including any operation system software. Any third party software supplier's warranty terms that may be found online or in any documentation or other materials contained in the product packaging shall supersede the Control4 Software Product Limited Warranty with regard to that third party software.

Ninety-Day Limited Software Warranty

Control4 warrants for a period of 90 days from the date of purchase that the software product will execute its programming instructions when all files are properly installed. Control4 does not warrant that the software will be uninterrupted or error free. In the event that this software product fails to execute its programming instructions during the warranty period, your remedy shall be replacement of refund only. Return the media to Control4 for replacement. Should Control4 be unable to replace the media within a reasonable amount of time,

Control4 shall refund the purchase price upon return of the product and all copies.

Removable Media (If Supplied)

Control4 warrants the removable media, if supplied, upon which this product is recorded to be free from defects in material and workmanship under normal use for a period of 90 days from the date of purchase. In the event the media proves to be defective during the warranty period, your remedy shall be replacement or refund only. Return the media to Control4 for replacement. Should Control4 be unable to replace the media within a reasonable amount of time, Control4 shall refund the purchase price upon return of the product and destruction of all other non-removable media copies of the software product.

Notice of Warranty Claims

You must notify Control4 in writing of any warranty claim not later than 30 days after the expiration of the warranty period.

Limitation of Warranty

Control4 makes no other express warranty, whether written or oral, with respect to this product. Any implied warranty of merchantability of fitness for a particular purpose is limited to the 90-day duration of this written warranty.

Limitation of Liability and Remedies

The Remedies provided above are your sole and exclusive remedies. In no event shall Control4 be liable for any direct, indirect, special, incidental, or consequential damages (including lost profit), whether based on warranty, contract, tort, or any other legal theory.

In no case shall Control4's liability exceed the purchase price for the software and/or product. The limitations set forth above will apply regardless of whether you accept the software.

FCC Statement

Federal Communication Commission Interference Statement

This device complies with Part 15 of the FCC Rules. Operation is subject to the following two conditions: (1) This device may not cause harmful interference, and (2) this device must accept any interference received, including interference that may cause undesired operation.

This equipment has been tested and found to comply with the limits for a Class B digital device, pursuant to Part 15 of the FCC Rules. These limits are designed to provide reasonable protection against harmful interference in a residential installation. This equipment generates uses and can radiate radio frequency energy and, if not installed and used in accordance with the instructions, may cause harmful interference to radio communications. However, there is no guarantee that interference will not occur in a particular installation. If this equipment does cause harmful interference to radio or television reception, which can be determined by turning the equipment off and on, the user is encouraged to try to correct the interference by one of the following measures:

- ▶ Reorient or relocate the receiving antenna.
- ▶ Increase the separation between the equipment and receiver.
- ▶ Connect the equipment into an outlet on a circuit different from that to which the receiver is connected.
- ▶ Consult the dealer or an experienced radio/TV technician for help.

FCC Caution



CAUTION! Any changes or modifications not expressly approved by the party responsible for compliance could void the user's authority to operate this equipment.

A Priority List for Media and Device Buttons

All media and devices that have been included in your system can be accessed in the Mini Touch Screen interface from either a Media page or a Device page. These pages are represented by buttons on the applicable subsystem page.

The media and device buttons display on the subsystem page in the following prioritized order.

- 1. Media**
 - 1a. Audio**
 1. Stored
 2. Broadcasted
 - 1b. Video**
 1. Stored
 2. Broadcasted
- 2. Video Devices**
 - 2a. TV**
 - 2b. Sat**
 - 2c. DVD**
 - 2d. DVR**
 - 2e. VCR**
 - 2f. Laser Disc**
 - 2g. Camera**
 - 2h. Game**
- 3. Audio Devices**
 - 3a. Tuner**
 - 3b. CD**
 - 3c. DSS**
 - 3d. XM or Sirius**
 - 3e. Tape**
 - 3f. DVD**
 - 3g. Phono**
 - 3h. Game**
 - 3i. Aux**

