



# WR-1

## 802.11ac Wireless Router with BakPak



BakPak  
Enabled

### QUICK START GUIDE

# Introduction

The Pakedge WR-1 Wireless Router gives you the convenience of a high-throughput wired router integrated with an 802.11ac Wave 2 wireless access point. The router has advanced features like port forwarding and static routes, while also supporting UPnP for simple compatibility with common consumer devices. The WR-1 also integrates the BakPak Management sub-agent, which means that you can access the power of BakPak to monitor your WR-1 from anywhere in the world.

Key features:

- BakPak built in: Manage the WR-1 from the standard BakPak interface.
- 500+ Mbps WAN-to-LAN firewall throughput
- Secure VPN: Support for PPTP and OpenVPN
- BakPakDDNS: Free Dynamic DNS service built in
- 802.11ac Wave 2 2x2 wireless
- Simple-to-use web GUI

## Package contents

- (1) WR-1 Router
- (1) Power adapter
- (1) Quick Start Guide
- (1) Ethernet cable

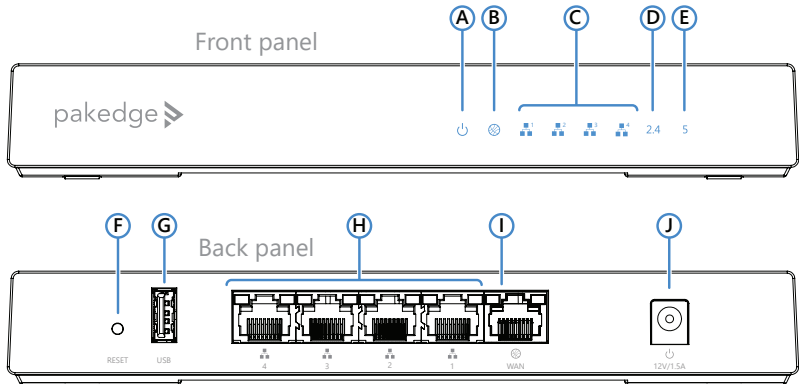
## User guide

- For more detailed instructions for this device and for the BakPak Management Sub-agent, refer to the *WR-1 User Guide* ([pkdgc.co/wr1-ug](http://pkdgc.co/wr1-ug)).

## Specifications

- System requirements: Windows or Mac PC with an Ethernet interface.

# Overview



**A** Power

**B** Internet

**C** LAN port activity

**D** 2.4 GHz active

**E** 5 GHz active

**F** RESET button

**G** USB port

**H** LAN ports

**I** WAN (to modem/Internet) port

**J** Power connector

# Installing

Tools required:

- Computer with Ethernet interface and a web browser
- Ethernet cable

## **To install the unit:**

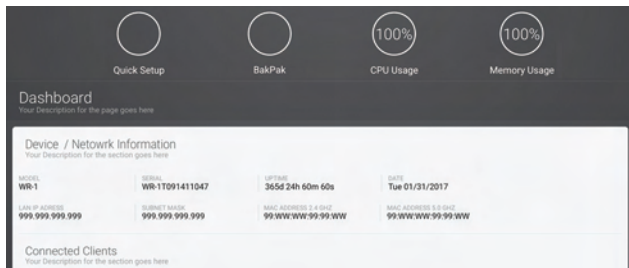
- 1** Open the box and remove the WR-1.
- 2** Ensure that the unit is physically mounted away from obstructions that could interfere with the wireless signal, such as metal racks or other wireless transmitting electronic devices.
- 3** Connect an Ethernet cable from your ISP modem to the **WAN** port on the WR-1.
- 4** Connect power to the WR-1.

You are now ready to configure the unit to allow Internet access and register with BakPak.

# Logging in

- 1 After power is connected and a computer is connected to the LAN port, enter the WR-1's IP address into the address bar of your web browser. A login screen opens.  
**Default settings:** The IP address will be automatically set to **192.168.1.99**.
- 2 Type your user name and password, then click **Login**. (The default username is **pakedge** and the password is **pakedger**.)

The *Dashboard* appears. The WR-1 Dashboard lets you navigate to all of the router's configuration sections.



- 3 To configure your network's basic settings, go to **Quick Setup**.
- 4 To register the WR-1 with BakPak, click the **BakPak** icon in the top menu bar.

# Registering your WR-1 with BakPak

You can connect your WR-1 to your existing BakPak account or create a new account to manage all of your BakPak Management Agents.

## To register your WR-1 to your BakPak account:

- 1 In the Dashboard, click **BakPak**. The *BakPak Registration* page opens.



- 2 Follow the on-screen instructions to complete your device registration.

# Technical Support

For technical help:

[www.pakedge.com/portal](http://www.pakedge.com/portal)

[support@pakedge.com](mailto:support@pakedge.com)

(650) 385-8703

For non-technical inquires:

[customerservice@pakedge.com](mailto:customerservice@pakedge.com)

(650) 385-8701

For regulatory information:

[www.pakedge.com/regulatory](http://www.pakedge.com/regulatory)



11734 Election Road, Draper, UT 84020  
Main: (650) 385-8700 Fax: (650) 685-5520

[www.pakedge.com](http://www.pakedge.com)  
[sales@pakedge.com](mailto:sales@pakedge.com)

©2017 Pakedge Device & Software Inc. All rights reserved.



DOC-00273-A 2017-05-11 MS