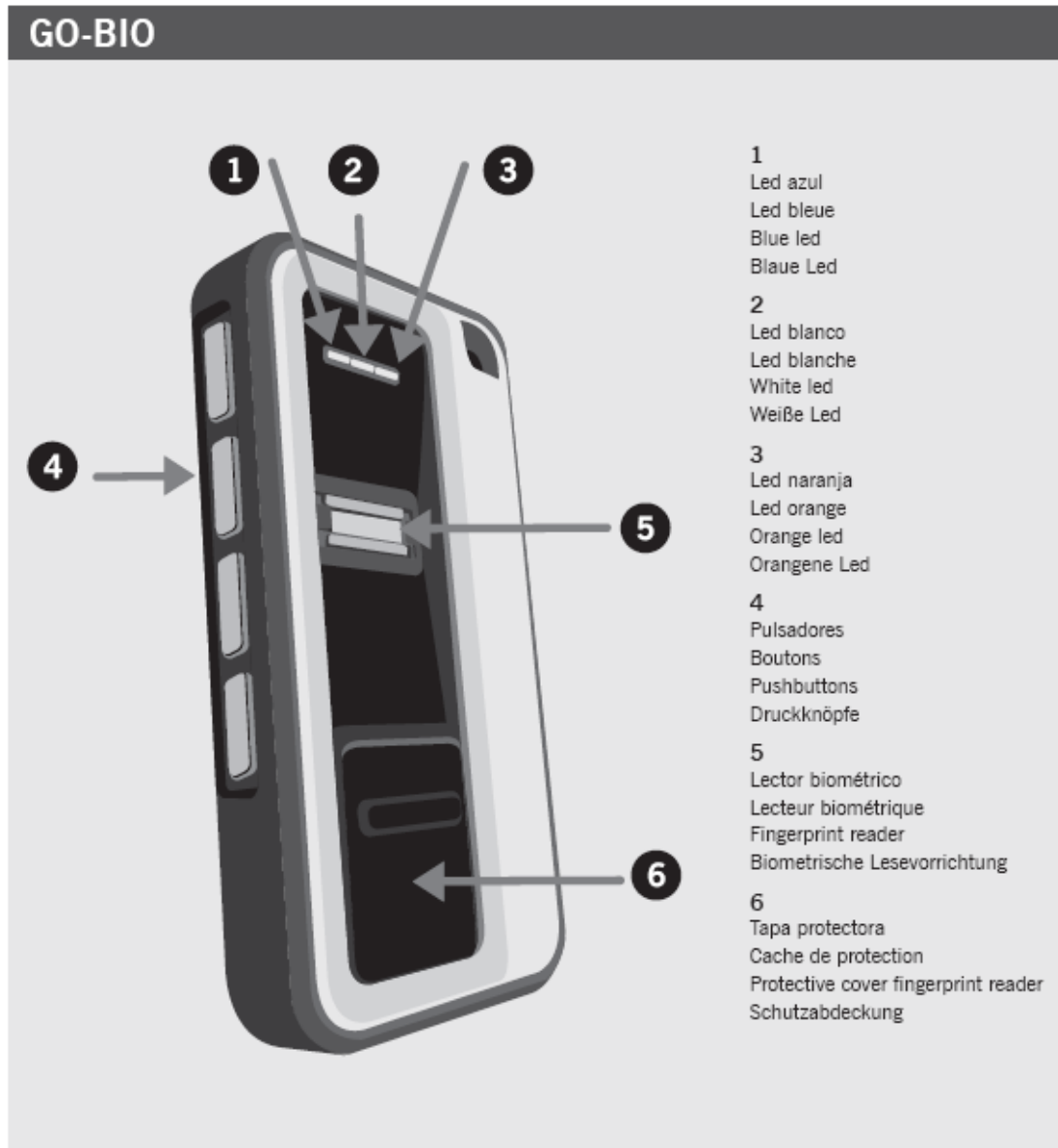


# GOBIO

BIOMETRIC TRANSMITTER FOR OPERATING WITH MOTION RECEIVERS.

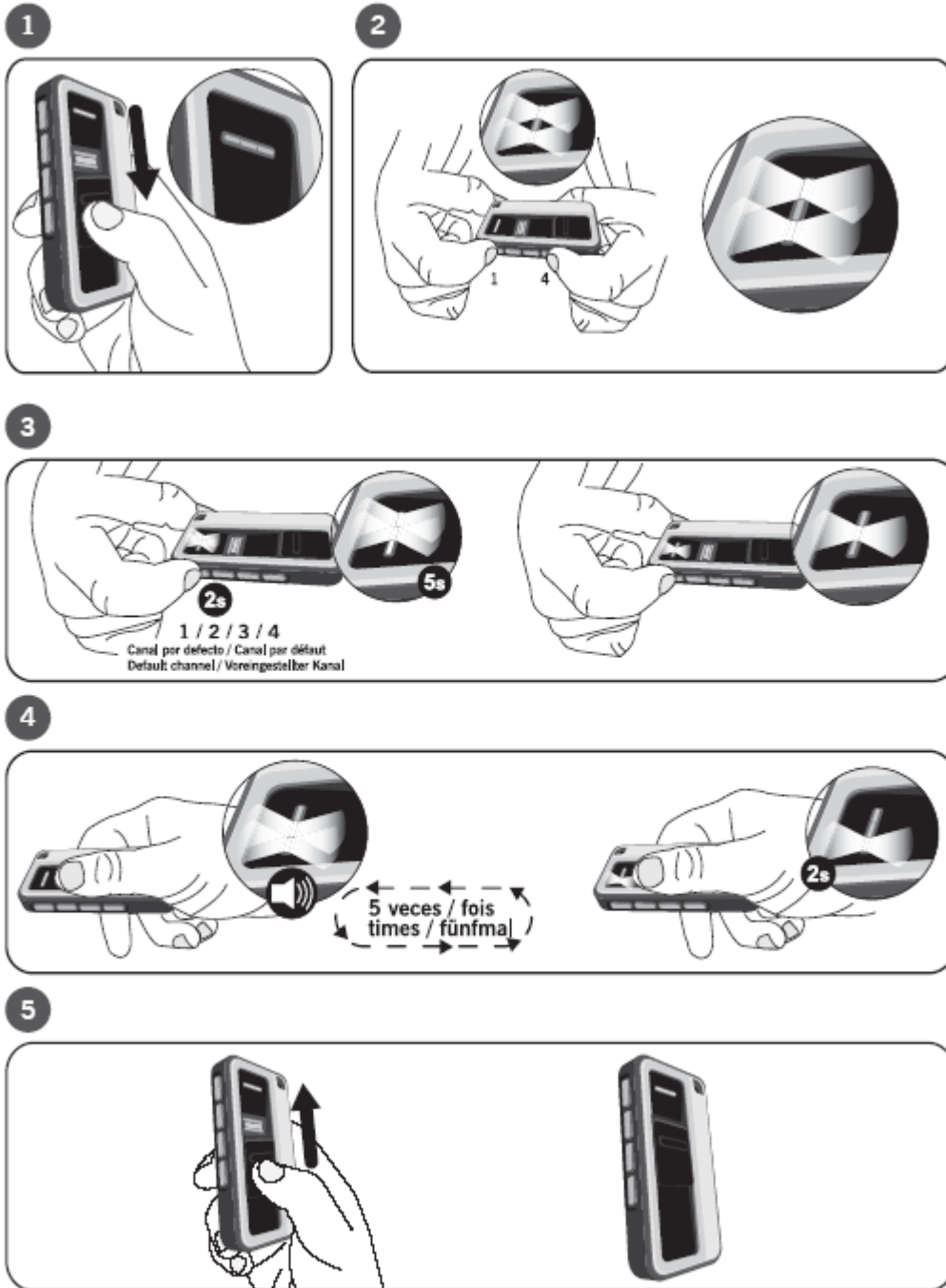


- 1**  
Led azul  
Led bleue  
Blue led  
Blaue Led
- 2**  
Led blanco  
Led blanche  
White led  
Weiße Led
- 3**  
Led naranja  
Led orange  
Orange led  
Orangene Led
- 4**  
Pulsadores  
Boutons  
Pushbuttons  
Druckknöpfe
- 5**  
Lector biométrico  
Lecteur biométrique  
Fingerprint reader  
Biometrische Lesevorrichtung
- 6**  
Tapa protectora  
Cache de protection  
Protective cover fingerprint reader  
Schutzabdeckung

More information in [www.jcm-tech.com](http://www.jcm-tech.com)

# GOBIO

## STARTING UP



## TECHNICAL DATA

Operating frequency	868,35 MHz
Power supply	1,5Vdc (1 battery type AAA)
Consumption operating / standby	<b>200mA / 40uA</b>
Radiated power	< 2,52uW
Memory	Maximum 10 fingerprints
Operating temperature	-20°C to + 55°C
Dimensions	76x41x15mm
Battery duration (approx)	1,5 years (with lithium battery)

# GOBIO

## TERMINOLOGY

**Default channel:** the channel that will be send in biometric activation operating

**Authorised channels:** The authorised pushbuttons for each of the finger-prints, available in the pushbutton activation + biometric validation operating

**Master fingerprint:** fingerprint that allows using operating and configuration modes

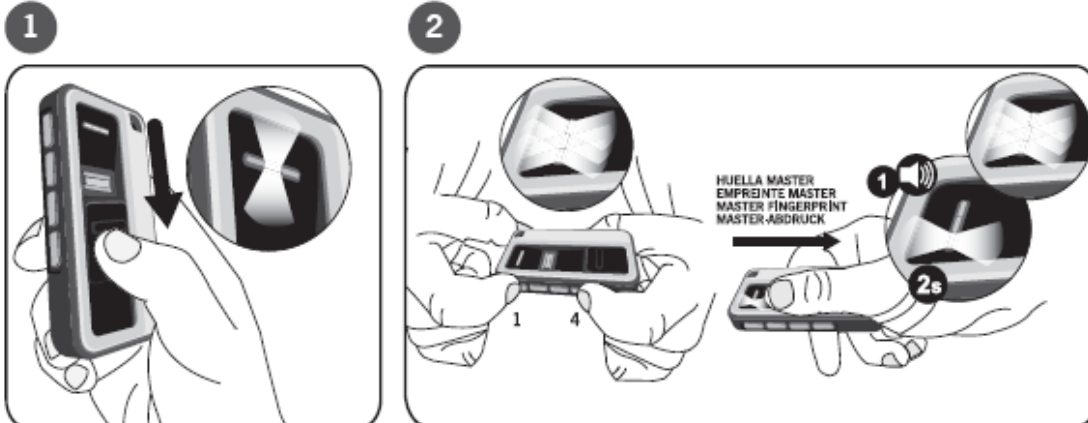
**Not master fingerprint:** fingerprint that only allows using the operating mode

## LIGHT AND SOUND INDICATORS

Action	Led Blue	Led White	Led Orange	Buzzer
<b>Operating mode</b>				
Biometric reader waiting a finger-print		ON		
Confirmation fingerprint reading ok	ON 2 seconds			1 beep
Biometric reader waiting for a finger-print in pushbutton mode	Flashing	ON		
Unrecognized fingerprint			ON	2 beeps
Error in fingerprint reading			Flashing	2 beeps
Low battery		ON	ON	4 beeps
Biometric reader damaged			ON	1 long beep
<b>Configuration mode (exclusive actions in this mode)</b>				
Device in configuration mode waiting for an action	Flashing	Flashing	Flashing	
Device waiting for a finger-print	Flashing	ON	Flashing	
Confirmation fingerprint reading ok in configuration mode	ON 2 seconds			1 beep
Device waiting for authorised channels or fingerprints	ON	ON		
Erasing one fingerprint		ON		5 beeps
Advise total reset			Flashing	10 beeps
Total reset			Flashing	10 fast beeps
Memory full			Flashing	10 beeps
Device in MASTER / NOT MASTER configuration mode	ON		ON	
MASTER FINGERPRINT Configuration			Flashing	1 beep
NOT MASTER FINGERPRINT Configuration			ON	2 beeps

## CONFIGURATION MODE

To enter in **configuration mode**, do the following steps:



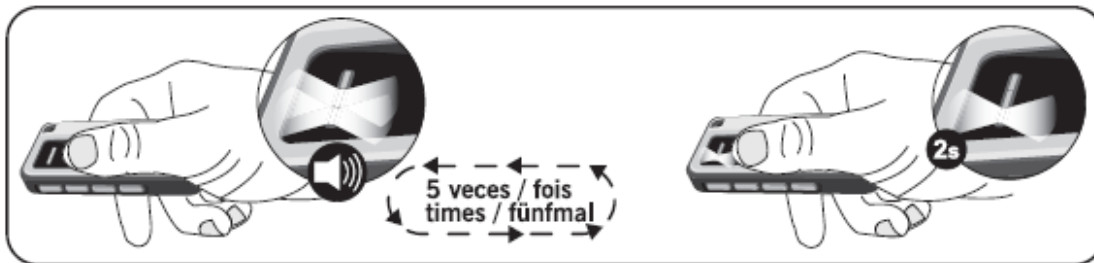
# GOBIO

## FINGERPRINT PROGRAMMING

**1** First enter in **configuration mode**.



**2** Pass the fingerprint to programme 5 times.



The equipment will remain in **configuration mode**.  
This process must be repeated for all the desired fingerprints to programme.  
The first channel selected will be used by default channel.

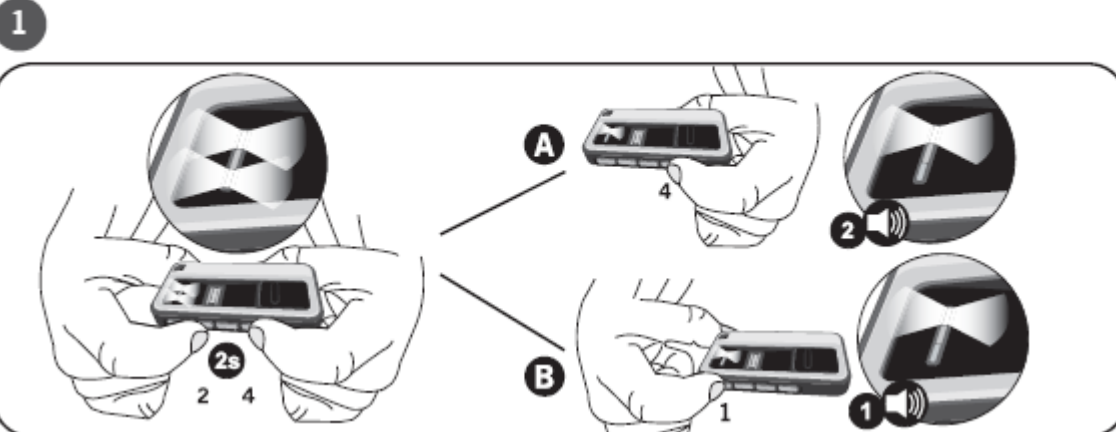
**All the programmed fingerprints will be MASTER FINGERPRINTS by default. For the NOT MASTER FINGER-PRINTS programming, see clause MASTER FINGERPRINTS / NOT MASTER FINGER-PRINTS CONFIGURATION.**

Note: If a fingerprint reading is not ok, the orange led will flash and two jeeps will be heard.

## MASTER FINGERPRINT / NOT MASTER FINGERPRINT CONFIGURATION

Being in **configuration mode**, the device must be configured as follows:

- A: HUELLAS NO MASTER / EMPREINTES NO MASTER / NOT MASTER FINGERPRINT / NICHT-MASTER-ABDRÜCKE
- B: HUELLAS MASTER / EMPREINTES MASTER / MASTER FINGERPRINT / MASTER-ABDRÜCKE



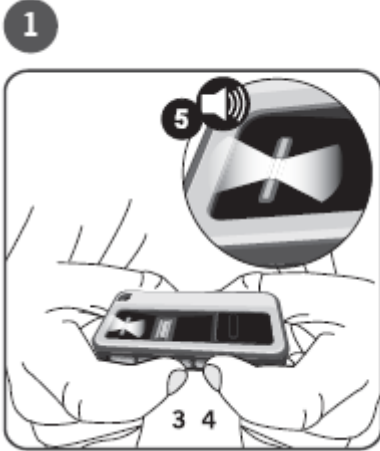
Once the device is configured, for the desired fingerprint programming follow the clause

# GOBIO

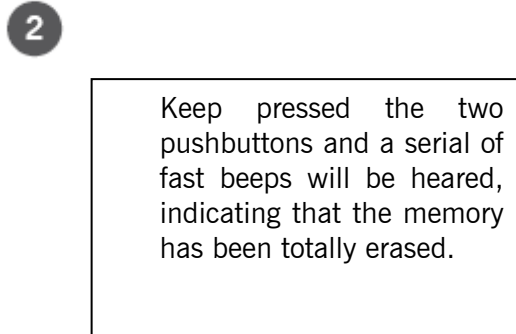
## ERASING THE MEMORY

To erase the memory, the device must be in **configuration mode**.

### A) ERASING ONE FINGERPRINT



### B) TOTAL RESET



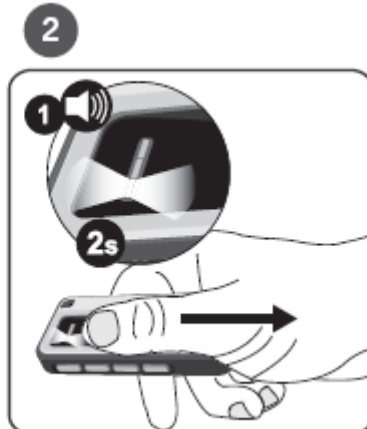
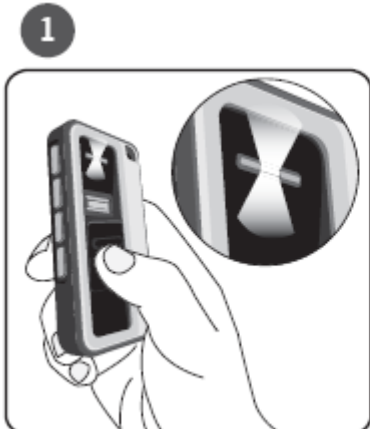
The equipment remains in **configuration mode**.

**To exit configuration mode**, wait 10 seconds without doing any action, or closet he protective cover, the device will exit configuration mode, and the three leds will go off. Two beeps will be heard.

## OPERATING MODE

Three operating modes:

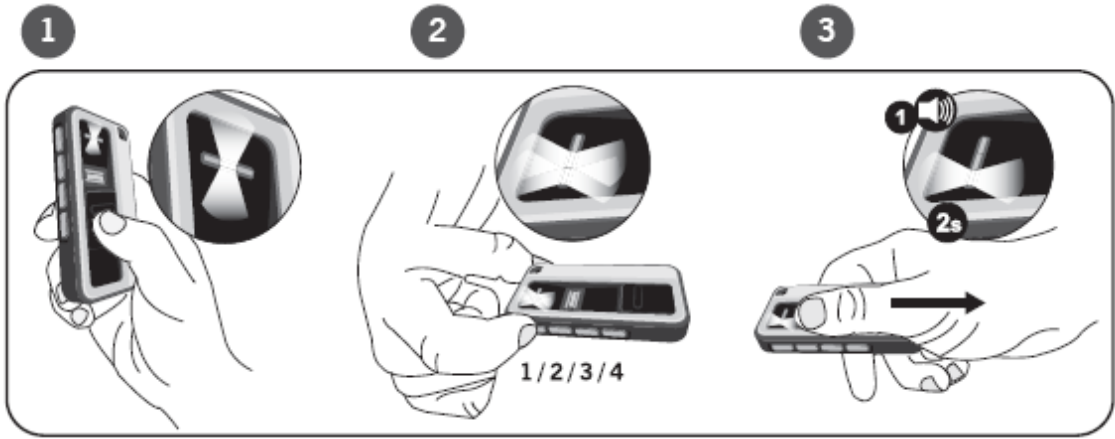
### A) BIOMETRIC ACTIVATION OPERATING:



# GOBIO

The default-programmed channel will be sending for the fingerprint used.

## B) PUSHBUTTON ACTIVATION + BIOMETRIC VALIDATION OPERATING:



## C) NORMAL TRANSMITTER OPERATING

If there are not fingerprints programmed in the device, this will operate as a normal transmitter pressing any of the buttons.

If the fingerprint is not recognised, the orange led will be at ON and two beeps will be heard.

### LOW BATTERY INDICATOR

At the time the protective cover is opened, the white and orange leds will be at ON and four beeps will be heard.

### BIOMETRIC READER DAMAGED

At the time the protective cover is opened, the orange led will be at ON and one beep will be heard.

### REPLACING THE BATTERY

Unscrew the screw in the rear part and replace the battery with the new one. Always use batteries of the same technical data that ones supplied by the manufacturer to guarantee its durability.

### RECOMMENDATIONS

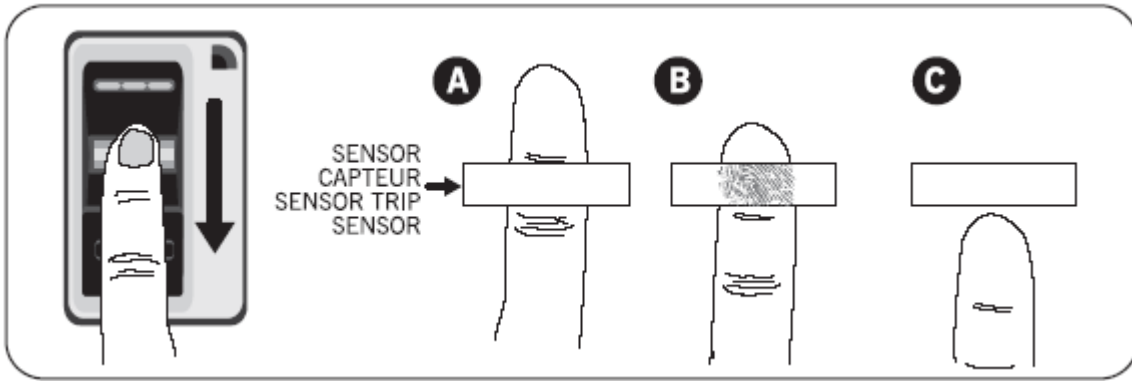
#### *How to pass the fingerprint correctly over the reader?*

#### **CORRECT**

1. Make sure finger is clean and dry. Place finger flat above the sensor strip with the top knuckle above the sensor.
2. Swipe finger straight down keeping firm contact with the sensor. The swipe should be a slow, constant speed.

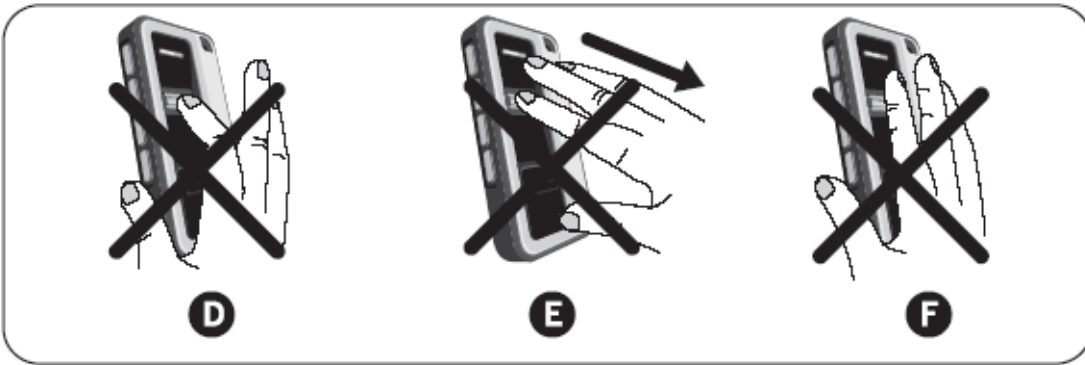
**Special notes:** Use the same finger for every swipe. It is important to swipe finger slowly and firmly as this is the reason most swipes fall.

# GOBIO



- A:** Start swipe with the top knuckle above the sensor strip.
- B:** Swipe finger straight down keeping firm contact with the sensor.
- C:** The scan should end at the tip of finger.

## INCORRECT



- D:** Do not bend finger during swipe as this will only scan the tip of your finger.
- E:** Swipe finger straight down, not at an angle.
- F:** Swipe flat, not tilted or rolled to one side.

### How to avoid damaging the biometric reader?

Keep always the protective cover closed when the transmitter is not used. Avoid scratching the surface when it is used. For avoiding a bigger consumption of the biometric reader, keep always the protective cover closed when it is not used.

**JCM TECHNOLOGIES, S.A.** declares herewith that the product **SU7GOBIO**, complies with the requirements of the 1999/5/ CEE R&TTE Directive, insofar as the product is used correctly

This device complies with Part 15 of the FCC Rules. Operation is subject to the following two conditions: (1) This device may not cause harmful interference, and (2) This device must accept interference received, including interference that may cause undesired operation.

Changes or modifications not expressly approved by the party responsible for compliance could void the user's authority to operate the equipment.

## CE DECLARATION OF CONFORMITY

See web [www.jcm-tech.com](http://www.jcm-tech.com)