

FAIL-SAFE®**HUS
HUV****50 W - 150 W**

High Pressure Sodium

50 W - 175 W

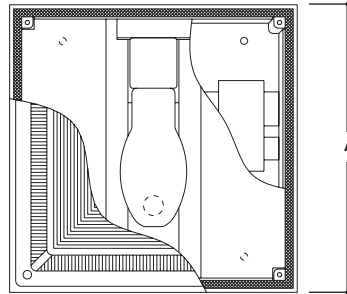
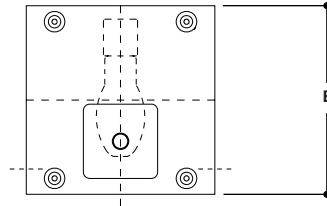
Metal Halide

POLYCARBONATE
HIGH ABUSE LUMINAIRE
CLEAR PRISMATICCAST ALUMINUM
SURFACE LUMINAIRE

- Nominal .156 UV stabilized, injection molded, impact resistant, clear K12 prismatic polycarbonate refractor
- Captive, stainless steel tamper-resistant TORX® - head screws prevent unauthorized access
- Heavy duty, corrosion resistant cast aluminum housing withstands impact and environmental abuse. Standard bronze polyester powder coat finish
- Porcelain socket, copper screwshell, silicone braid, 150°C
- Non-shrinking, double baked neoprene gasketing seals out the environment
- HPF core and coil ballast
- Die-formed CRS reflector with white polyester powder coat finish
- U.L. listed, C.S.A. certified, standard wet label

DESCRIPTION

Fail-Safe designed the HUS and HUV Series in wattages up to 175W HPS as an unbreakable replacement answer to commercial fixtures which might succumb to vandalism. A corrosion resistant cast aluminum housing holds a polycarbonate diffuser which fastens with four tamper resistant screws to prevent unauthorized access. Double gasketing seals out the environment. U.L. listed, C.S.A. certified, standard wet label.

DIMENSIONS**MOUNTING**

A	B
12 3/4" sq. (324mm)	11 3/8" sq. (289mm)

ORDERING INFORMATION

SAMPLE NUMBER: HUS-100S-277-QRS

Product Family

HUS=Cast Aluminum
Surface Luminaire
HUV=Cast Aluminum
Surface with Visor

Lamp Type

50S=50W HPS
Mogul Base
70S=70W HPS
Mogul Base
100S=100W HPS
Mogul Base
150S=150W HPS¹
Mogul Base
50M=50W MH
Medium Base.
70M=70W MH
Medium Base
100M=100W MH
Medium Base
150M=150W MH
Medium Base
175M=175W MH
Mogul Base

Voltage ⁽²⁾

120=120V
208=208V
240=240V
277=277V
DT=Dual-Tap
120/277V
MT=Multi-tap
120/208/240/277V

Options

SF=Single Fuse
DF=Double Fuse
OPL=Opal Diffuser
QRS=Quartz Restrike
System (DC bayonet
base; lamp by
others)
QS=Quartz Socket Only
(DC bayonet base)
LL=Lamp Included

Housing Finishes

BLK=Bronze
(Standard)
BLK=Black
WHT=White

Accessories

(Order Separately)
9210=Photocell
(for 120V Only)
9220=Photocell (for
208V, 240V, 277V)
VRSD=Torxhead
Vandal Resistant
Screwdriver
2802=Pendant
Mounting Box
2811=Trunion
Mounting Kit
2822=Quick Mounting
Kit

Notes: For additional options, consult your Cooper Lighting Representative. Specifications and Dimensions subject to change without notice.

¹ Not for use on combustible ceilings. ² Products also available in non-US voltages and 50Hz for international markets. Consult your Cooper Lighting Representative for availability and ordering information.