

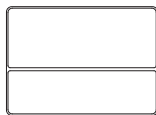
## Features

- 1. Ultrathin** 13.4 mm of ultrathin and light weight maximizes mobility and user's convenience.
- 2. Bluetooth V4.0 BLE** Latest Bluetooth V4.0 with low energy consumption utilized for longer battery life.
- 3. Long-lasting** Built-in lithium polymer battery gets up to 1 month on a full charge.

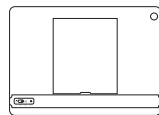
## Safety Rules

1. Do not put heavy objects on the product.
2. Keep away from oil or liquid.
3. Do not apply excessive tension or distortion.
4. Keep the flip cover closed is recommended while on the go.
5. Core Logic is not responsible for any improper use.
6. Product design and specifications may be revised to improve the product quality.

## Contents



Bluetooth Keyboard Case

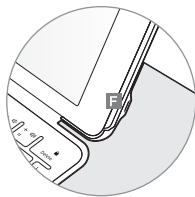


Manual



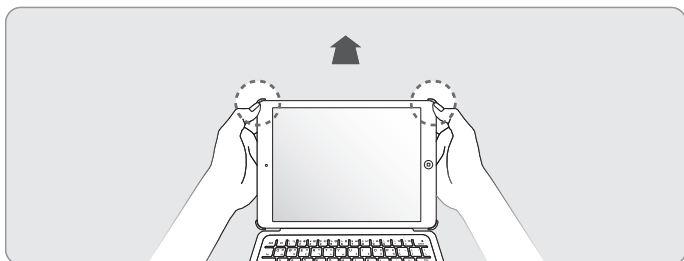
USB charging cable

## Parts and functions



- A** Power switch (ON/OFF)
- B** Bluetooth pairing button
- C** Power LED
- D** Charging LED
- E** Bluetooth LED
- F** USB cable charging part

## How to remove case



## Bluetooth Pairing

1. Turn on your iPad and ensure its Bluetooth function is activated. Press on the Bluetooth pairing button of the keyboard for 2 seconds going to pairing mode and Blue LED will quickly flash.
2. After a few seconds, the iPad will find the keyboard as a discover device.

### How to set up Bluetooth for iPad

1. Touch "Setting" on iPad screen ▶ Choose Bluetooth ▶ Turn Bluetooth setting to be "on" and searches automatically for devices will start.
2. If there is no connection within one minute after the blue LED on keyboard flickers, it turns off and does not flicker anymore. After this moment, if any key on keyboard is pressed, the connection sequence is restarted.

3. Then entering a pass code(6 digits) shown on the display of the Table PC will be required to pair them.
4. Type the code and press Enter for use.

### NOTE

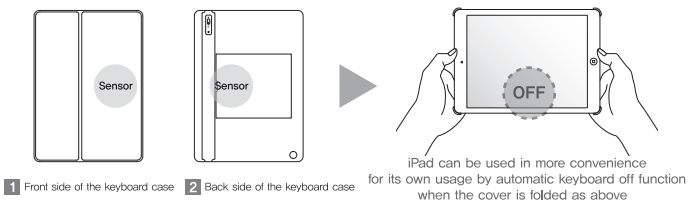
If you are using this keyboard with other devices and wish to connect it to your Tablet PC now, the devices should be removed first of all and then follow the standard Bluetooth pairing procedures shown at this manual.

## How to use

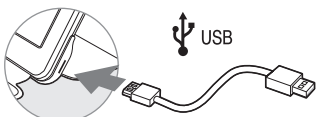
### Auto lock function of keyboard

Auto lock function is provided for user's convenience and for the longer battery life span. Keyboard is designed to stop working when ON/OFF sensor (1 and 2) is contacted to the positions of the keyboard shown as the images below. However, user can manually activate the keyboard by pressing **Fn** + **Q** keys for anytime use. (When power is switched off, the manual keyboard activation function is automatically cancelled)

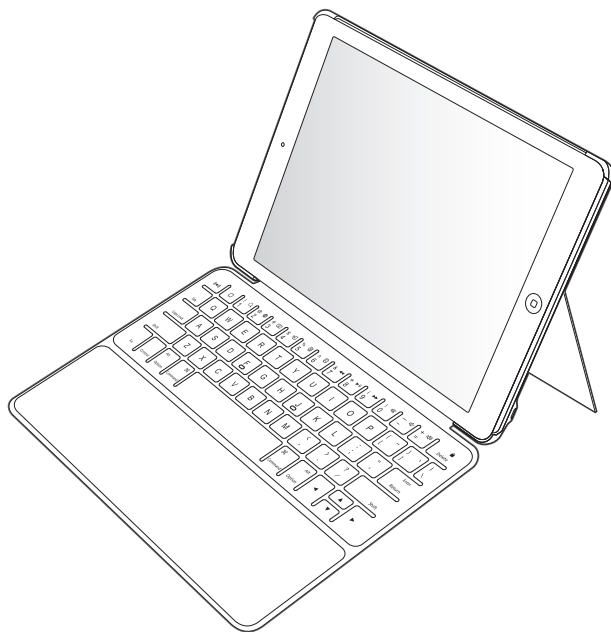
### Activation of On/Off sensor



## How to charge



1. A USB charging cable in the package is recommended for charging the device.
2. Red light is on during recharging and off after fully charged.
3. Battery should be charged for the longer life span in case of no use for long time.



## USER MANUAL

# Libero

## ULTRATHIN KEYBOARD CASE

CLNK1100

for iPad Air2

## Function Keys

- |   |  |
|---|--|
| 1. <b>□</b> HOME  | 11. <b>Fn</b> + <b>⏮</b> Play/Pause                |
| 2. <b>Fn</b> + <b>🔍</b> Search  | 12. <b>Fn</b> + <b>⏭</b> Next Track                |
| 3. <b>Fn</b> + <b>🌐</b> Switch Language   | 13. <b>Fn</b> + <b>🔇</b> Mute                      |
| 4. <b>Fn</b> + <b>🖥</b> Virtual Keyboard  | 14. <b>Fn</b> + <b>⏏</b> Volume Up                 |
| 5. <b>Fn</b> + <b>✂</b> Cut   | 15. <b>Fn</b> + <b>⏏</b> Volume Down               |
| 6. <b>Fn</b> + <b>📄</b> Copy  | 16. <b>Fn</b> + <b>🛌</b> On/Off (Sleep/Wake)       |
| 7. <b>Fn</b> + <b>📄</b> Paste   | 17. <b>Fn</b> + <b>M</b> Keyboard auto lock On/Off |
| 8. <b>Fn</b> + <b>⏮</b> Previous Track  | <b>0=0</b> Buzzer On/Off(Press for 2 sec)          |
| 9. <b>Fn</b> + <b>S</b> Key sensitivity control (from Beep 1time: very sensitive to Beep 4times: insensitive) |  |
| 10. <b>Fn</b> + <b>V</b> Buzzer volume control (from Beep 1time: very low to Beep 4times: very high)          |  |

## Trouble Shooting

If the keyboard is not working properly, please check following points

1. Check if the Bluetooth power is on
2. Check if the keyboard is within the effective range(within 10 meters)
3. Check if the battery is fully charged when a first use.
4. Keyboard should be removed and reregistered for pairing when keyboard does not work in spite of trouble shootings mentioned above.

## Specifications

1. Operation standard: BLE V4.0(Up to 10 meters)
2. Size : 243mm x 173mm x 13.4mm
3. Weight : 276g
4. Charging time: 2~3hours

This device complies with Part 15 of the FCC Rules. Operation is subject to the following two conditions:

- (1) This device may not cause harmful interference. and
- (2) This device must accept any interference received, including interference that may cause undesired operation.

Any changes or modifications (including the antenna) made to this device that are not expressly approved by the manufacturer may void the user's authority to operate the equipment.

To comply with FCC RF exposure compliance requirements, a separation distance of at least 20 cm must be maintained between the antenna of this device and all persons. This device must not be co-located or operation in conjunction with any other antenna or transmitter.