

| FCC Part 15 Notice |

This equipment has been tested and found to comply with the limits for a Class B digital device, pursuant to part 15 of the FCC Rules. Operation is subject to the following two conditions: (1) this device may not cause harmful interference, and (2) this device must accept any interference received, including interference that may cause undesired operation. Class B limits are designed to provide reasonable protection against harmful interference in a residential installation. This equipment generates, uses, and can radiate radio frequency energy, and, if not installed and used in accordance with the instructions, may cause harmful interference to radio communications. However, there is not guarantee that interference will not occur in a particular installation. If this equipment does cause harmful interference to radio or television reception, which can be determined by turning the equipment off and on, the user is encouraged to try to correct the interference by one or more of the following measures:

- Reorient the receiving antenna.
- Increase the separate between the equipment and the receiver.
- Connect the equipment into an outlet on a circuit different from that to which the receiver is connected.
- Consult the dealer or an experienced radio/TV technician for help.

CAUTION: Changes or modifications not expressly approved by the manufacturer responsible for compliance could void the user's to operate the equipment.

| Copyright |

Copyright Corecess All rights Reserved.

No Part of this book shall be reproduced, stored in a retrieval system, or transmitted by any means, electronic, mechanical, photocopying, recording, or otherwise, without written permission from the publisher.

The specifications and information regarding the products in this manual are subject to changed without notice.

| Trademark Credit |

Corecess 3213 is registered trademark of Corecess Inc.

Windows is registered trademark of Microsoft Corp.



Corecess Inc.
997-4, Daechi-dong, Kangnam-ku, Seoul, Korea
TEL:82-2-3016-6900 FAX:82-2-3016-6622
<http://www.corecess.com>

Thank you for using the product of Corecess.
This manual helps users to install and configure
the Corecess VDSL Modem Corecess 3213.

Table of Contents

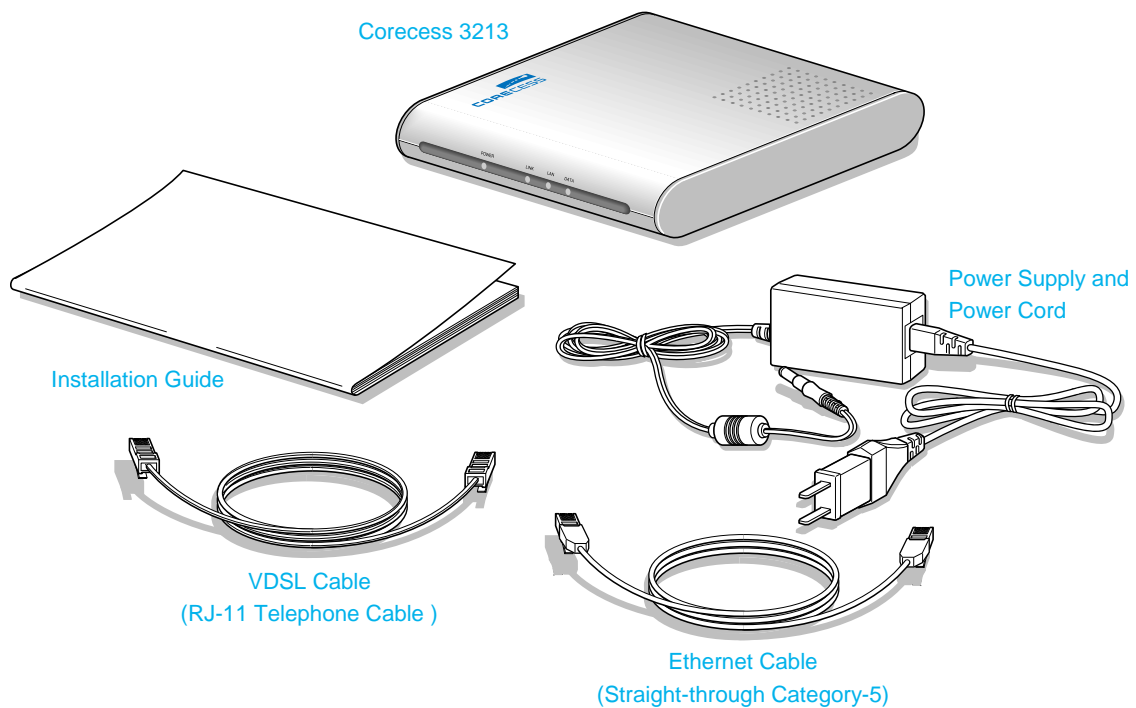
| | |
|------------------------------------|----|
| Introduction | 4 |
| Unpacking the Box | 4 |
| Installing the Corecess 3213 | 5 |
| Configuring the TCP/IP | 7 |
| Troubleshooting | 10 |
| Technical Specifications | 12 |

Introduction

The Corecess 3213 is an Very-high-data-rate Digital Subscriber Line (VDSL) modem used for home connectivity to an VDSL service provider network over an Ethernet network connection. The Corecess 3213 VDSL modem can transmit and receive data at rates up to 16Mbps.

Unpacking the Box

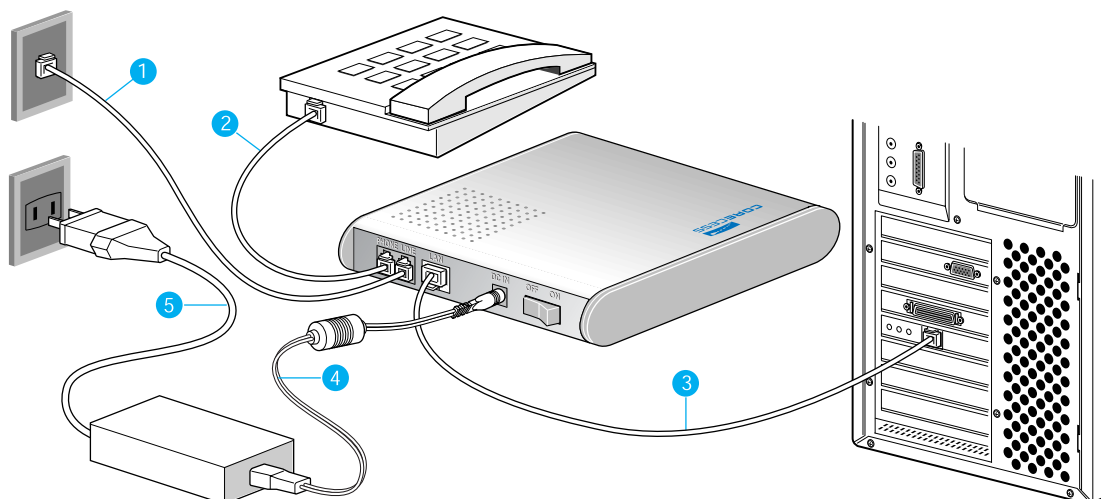
Check the shipping carton carefully to ensure that the contents include the items you ordered.



Note : The PC with Ethernet port or adapter is necessary to install the Corecess 3213. Before installing the Corecess 3213, prepare a PC with Ethernet port or adapter.

Installing the Corecess 3213

Connecting Cables



1 Connecting the VDSL Line (LINE Port)

Connect the provided VDSL cable to the **LINE** port of the Corecess 3213 and then connect the other end of the cable to the wall receptacle.

2 Connecting a Telephone (PHONE Port)

Connect a telephone cable to the **PHONE** port of the Corecess 3213 and then connect the other end of the cable to your telephone.

3 Connecting a PC (LAN Port)

Connect the provided Ethernet cable to the **LAN** port of the Corecess 3213 and then connect the other end of the cable to Ethernet port on the back of your PC.

4 Connecting the Power Supply (DC IN Port)

Connect the provided power supply cable into the **DC IN** port of the Corecess 3213.

5 Connecting the Power Cord

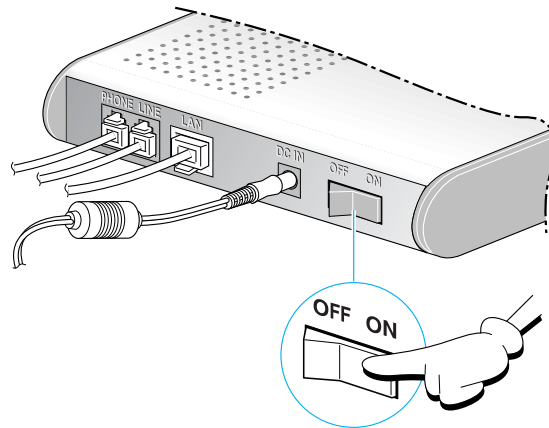
Connect the provided power cord to the power supply and connect the other end of the cord to an appropriate electrical outlet.



Caution : You must power on the Corecess 3213 before powering on your PC. If you power on your PC first, PC's IP address may not be properly assigned. In this case, assign new IP address referring to 'Troubleshooting' on page 10-11 or restart your PC.

Power on the Corecess 3213

After connecting the Corecess 3213, turn on the Corecess 3213 by pressing the power switch on the rear panel of the Corecess 3213.



When you have powered up the Corecess 3213, check the status of the four LEDs on the front panel by the following table:

| LED | Color | Status | Description |
|-------|-------|--------|---|
| POWER | Green | ON | DC power is being supplied to the Corecess 3213. |
| LINK | | ON | The modem is connecting to VDSL network. |
| LAN | | ON | The LAN port is connecting to Ethernet port on your PC. |
| DATA | | Blink | Data is being sent to or received from VDSL network. |

Configuring the TCP/IP

After you install the Corecess 3213, next is to configure the TCP/IP network protocol.



Caution: When you configure the TCP/IP, leave the default value of any other configuration that is not mentioned in the following description.

Windows 95/98/ME

1. Click the **Start** button and select **Settings → Control Panel**. (Figure 1)



figure 1

2. Double-click the **Network** icon.

3. Select **TCP/IP** in the 'The following network components are installed' list and click **Properties**. (Figure 2)

4. Select the **[IP Address]** tab and click the **Obtain IP address automatically**. (Figure 3)

5. Select the **[DNS Configuration]** tab and click the **Disable DNS**. (Figure 4)

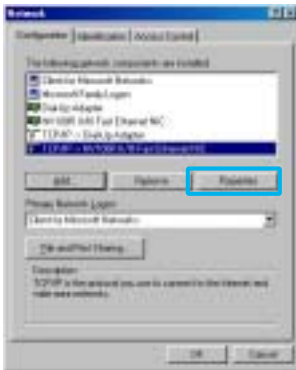


Figure 2



Figure 3



Figure 4

6. Select the **[Gateway]** tab and check there is no gateway installed. If there are installed gateways, delete them by clicking **[Remove]**. Click **OK**. (Figure 5)



Figure 5

7. At the <Network> dialog box, click **OK**. The system prompts you to restart. Click **Yes**.

Windows 2000/NT

1. Click the **Start** button and select **Settings** → **Network and Dial-up Connections**. (Figure 1)

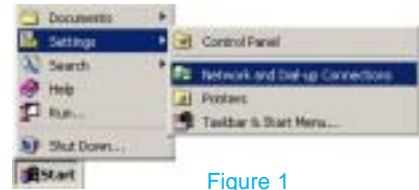


Figure 1

2. Right-click the **Local Area Connection** icon at the <Network and Dial-up Connections> windows and select **Properties** menu. (Figure 2)



Figure 2

3. At the <Local Area Connection Properties> dialog box, select the **Internet Protocol (TCP/IP)** in the 'Components checked are used by this connection' list and click **Properties**. (Figure 3)
4. At the <Internet Protocol (TCP/IP Properties)> dialog box, click the **Obtain an IP address automatically** and the **Obtain DNS server address automatically**. Then click **Advanced** to check the TCP/IP settings for accuracy. (Figure 4)



Figure 3

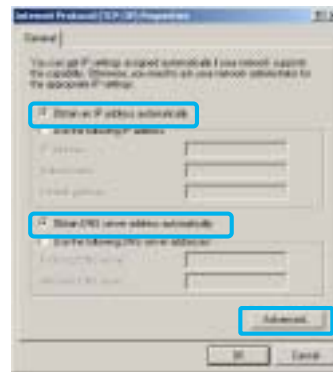


Figure 4

5. The <Advanced TCP/IP Settings> dialog box appears. At the **[IP Settings]** tab, check that the **IP Address** is set to **Enable DHCP**. (Figure 5)
6. Select the **[DNS]** tab and check that the **Append primary and connection specific DNS suffix** is selected. Click **OK**. (Figure 6)



Figure 5



Figure 6

Windows XP

1. Click the **Start** button and select **Settings** menu. (Figure 1)



Figure 1

2. Double-click the **Network** icon at the <Control Panel> window.

3. Right-click the **Local Area Connection** icon at the <Network Connections> windows and select **Properties** menu. (Figure 2)



Figure 2

4. At the <Local Area Connection Properties> dialog box, select the **Internet Protocol (TCP/IP)** in the 'This connection uses the following items' list and click **Properties**. (Figure 3)

5. At the <Internet Protocol (TCP/IP) Properties> dialog box, click the **Obtain an IP address automatically** and the **Obtain DNS server address automatically**. Then click **Advanced** to check the TCP/IP settings for accuracy. (Figure 4)

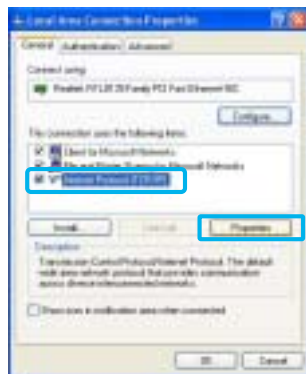


Figure 3

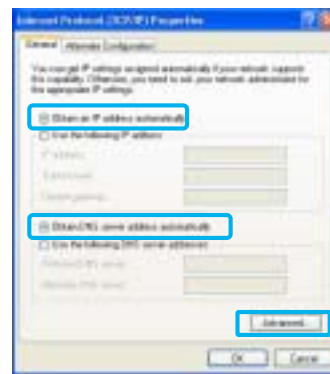


Figure 4

6. The <Advanced TCP/IP Settings> dialog box appears. At the **[IP Settings]** tab, check that the **IP Address** is set to **Enable DHCP**. (Figure 5)

7. Select the **[DNS]** tab and check that the **Append primary and connection specific DNS suffix** is selected. Click **OK**. (Figure 6)



Figure 5



Figure 6

Troubleshooting

If you cannot connect to VDSL network, please check the status of the LEDs on the front panel, and then ensure the following:

1. Check the LAN LED

If the LAN LED goes off, ensure that the Ethernet cable is firmly connected both to the Ethernet port on the Corecess 3213 and LAN port on your PC.

2. Check the LINK LED

If the LINK LED blinks continuously and never stays solid on, ensure that the VDSL cable is firmly connected to the LINE port on the Corecess 3213. If the LINK LED still blinks, contact your VDSL service provider.

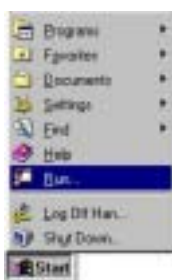
If the LINK LED goes off, turn off the power of the Corecess 3213 by pressing the power switch and turn on the power again. If LINK LED still goes off, contact your vendor.

3. Check your PC's IP address

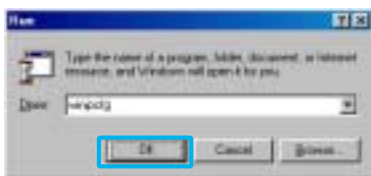
If all LEDs operate normally and cables are firmly connected to the ports, ensure that your PC's IP address is properly assigned. Otherwise assign a new IP address according to your operating system.

Windows 95/98/ME

- 1 Click the [Start](#) button and select [Run](#).



- 2 Input [Winipcfg](#) and press the [\[Enter\]](#) key.



- 3 Select Ethernet adapter connected with the Corecess 3213 and click [Release All](#).

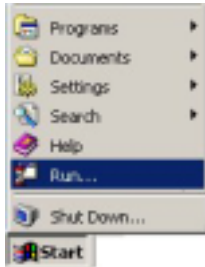


- 4 Click [Renew All](#).

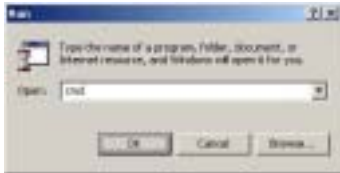


Windows 2000/NT/XP

- 1 Click the **Start** button and select **Run**.



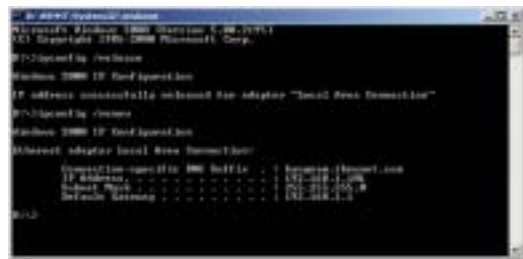
- 2 Input **cmd** and press the **[Enter]** key.



- 3 The DOS-prompt appears. Input **ipconfig /release** and press **[Enter]** key.



- 4 Input **ipconfig /renew** and press **[Enter]** key.



4. Restart your PC

If new IP address is not assigned properly or you cannot solve the problem, ensure that the Corecess 3213 turns on and then restart your PC.

Technical Specifications

| Description | Specification |
|--------------------------|---|
| Standard | VDSL Standard |
| | <ul style="list-style-type: none"> • ETSI VDSL Standard • ANSI VDSL Standard • ITU VDSL Standard |
| | IEEE Standard |
| | <ul style="list-style-type: none"> • IEEE 802.3 10/100Base-TX |
| Interface | Ethernet |
| | <ul style="list-style-type: none"> • 10/100Base-TX (IEEE 802.3) • Connector: RJ-45 |
| | VDSL Line |
| | <ul style="list-style-type: none"> • Line Code: Quadrature Amplitude Modulation (QAM) QAM 4 - QAM 256 configurable • Up/Downstream: 16Mbps • Duplexing scheme: Frequency Division Multiplexing (FDD) • Band allocation: 3.94 – 8.26 MHz (Upstream) 0.64 – 3.76 MHz (Downstream) • Connector: RJ-11 |
| Connector | <ul style="list-style-type: none"> • 2 RJ-11 connectors (PHONE, LINE) • 1 RJ-45 connector (LAN) • 1 Power socket (DC IN) |
| LED | <ul style="list-style-type: none"> • POWER: Indicates DC power status • LINK: Indicates connection status with VDSL network • LAN: Indicates connection status with PC's LAN card • DATA : Indicates data transmit/receive status via VDSL network |
| Environmental Conditions | <ul style="list-style-type: none"> • Temperature: -10°C ~ 50°C • Humidity: 5% ~ 90% |
| Physical Conditions | <ul style="list-style-type: none"> • Dimension: 140(W) x 30(H) x 150(D) mm • Weight: 250g |
| Power Requirements | <ul style="list-style-type: none"> • Input: 88-264VAC, 50-60Hz, DC 5V/2A • Power consumption: Normal 2.6, Max. 4 Watt |