



Listen 'til your heart's content

Quick Start Guide

We hope you love to Listen!

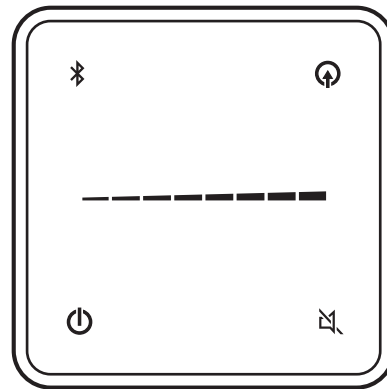
When we started working on the new Simple Audio Listen, we wanted to deliver amazing sound, in a beautifully designed speaker that worked seamlessly with the way you listen to the music you love—whether that's from your computer, or from your smartphone or tablet. We hope you'll agree with us when we say proudly that we've more than met that goal.

What's in the box

- Simple Audio Listen Speakers
- Infrared Remote Control
- AC Power Adapter
- 3 meter speaker extension cable
- USB Cable
- 3.5mm to 3.5mm stereo cable

Getting to know your speakers

You won't find switches, buttons, or knobs anywhere on these speakers. Instead, you'll control your music with a unique touch interface, located on the top of the right speaker, or using the included remote control. Take a moment to familiarize yourself with the controls.

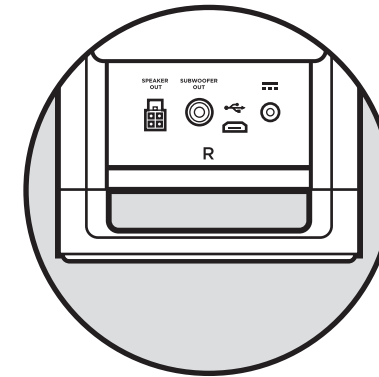


Let's get ready to rock

The first step is to get your Listen speakers set up and ready to play. Just connect the two speakers to each other, plug them in, and add some music.

The left speaker has a two meter cable that connects to the right. This works well for desktop use, with the speakers on either side of your monitor. If you're using Listen in a larger space, or want additional separation, use the speaker extension cable. Put your speakers in place and connect them together.

Now plug in the AC adapter to a wall outlet and then into the Listen speakers. Be sure to use the supplied AC adapter; third-party adapters might damage your new Listen speakers. Turn your speakers on by tapping the Power control.



Get connected

Are you using your Listen speakers with your computer? Just connect your Windows or Mac OSX-based PC using the USB cable. Listen uses your computer's built-in audio drivers and delivers stunning, room-filling audio. For Windows, you can choose Listen as the default audio device using the **Control Panel** and selecting **Sound**. For Mac OSX, you can select Listen using the **Sound** app in **System Preferences**. By default, Listen uses USB audio as its source.

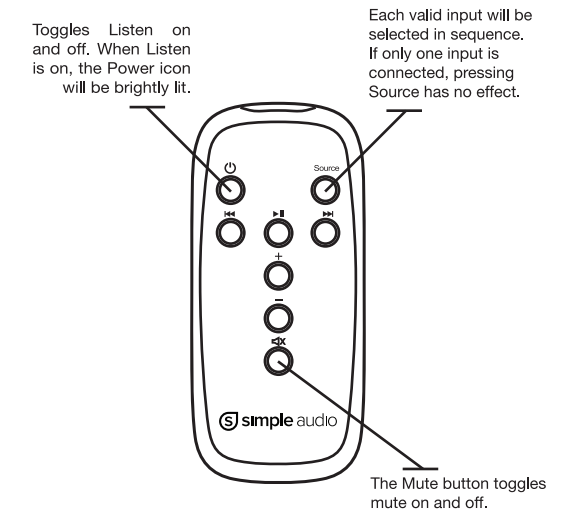
If you plan to wirelessly connect to your smartphone or tablet, touch and hold the Bluetooth control until you hear a tone (about five seconds) to put Listen into pairing mode. Open the Bluetooth menu on your smartphone or tablet, and select Simple Audio Listen to connect. Pairing with a Bluetooth source automatically uses that as its source, and the Bluetooth icon will be brightly lit. To toggle Bluetooth input, just touch the Bluetooth control.

For line-in, use the 3.5mm jack located on the front of the right speaker. Line-in is automatically selected whenever a cable is plugged into the jack, and the Line-in control will be brightly lit. To toggle Line-in as a source, you can simply touch the Line-in control or unplug the cable.

The brightly lit control is always the active source; if neither the Bluetooth or Line-in icon is bright, then USB is the selected input.

Can't touch this?

If you're not using your Listen speakers on your desktop, you may not always be able to easily reach the touch interface, so we've provided an infrared remote you can use to control Listen from across the room.



Safety Information

- When connecting or disconnecting the charger that came with your Simple Audio product to an AC power outlet, hold the charger by its sides. Keep your fingers away from the metal parts.
- Always use the AC adapter or charger that came with your product. Using other AC adapters or chargers may damage the electronics and/or rechargeable battery.
- Never force any connector into the jacks. Make sure the connector matches the jack and you have correctly oriented the connector. If more than reasonable force is needed, the connections may not match and you may damage your device.
- Avoid using the product in wet locations. Charging or using your Simple Audio product in or near water or wet locations increases the chance of shock or injury, and can damage the electronics.
- Do not attempt to open or disassemble your Simple Audio product. If you do, you run the risk of electric shock and/or injury, and you will void the limited warranty. There are no user-serviceable parts inside.

FCC Declaration of Conformity

This device complies with Part 15 of the FCC Rules. Operation is subject to the following two conditions: (1) this device may not cause harmful interference, and (2) this device must accept any interference received, including interference that may cause undesired operation.

Radio and Television Interference

This equipment has been tested and found to comply with the limits for a Class B digital device, pursuant to part 15 of the FCC Rules. These limits are designed to provide reasonable protection against harmful interference in a residential installation. This equipment generates uses and can radiate radio frequency energy and, if not installed and used in accordance with the instructions, may cause harmful interference to radio communications. However, there is no guarantee that interference will not occur in a particular installation.

If this equipment does cause harmful interference to radio or television reception, which can be determined by turning the equipment off and on, the user is encouraged to try to correct the interference by one or more of the following measures:

- Reorient or relocate the receiving antenna.
- Increase the separation between the equipment and receiver.
- Connect the equipment into an outlet on a circuit different from that to which the receiver is connected.
- Consult the dealer or an experienced radio/TV technician for help.

Warning: Changes or modifications to this product not expressly approved by Simple Audio could void EMC compliance and negate your authority to operate the product.

Exposure to Radio Frequency Energy

This equipment complies with FCC radiation exposure limits set forth for an uncontrolled environment. This equipment should be installed and operated with minimum distance 20cm between the radiator & your body. This transmitter must not be co-located or operating in conjunction with any other antenna or transmitter.

Canadian Compliance Declaration

This device complies with RSS-210 of the Industry Canada Rules. Operation is subject to the following two conditions: (1) This device may not cause harmful interference, and (2) this device must accept any interference received, including interference that may cause undesired operation.

Ce dispositif est conforme à la norme CNR-210 d'Industrie Canada applicable aux appareils radio exempts de licence. Son fonctionnement est sujet aux deux conditions suivantes: (1) le dispositif ne doit pas produire de brouillage préjudiciable, et (2) ce dispositif doit accepter tout brouillage reçu, y compris un brouillage susceptible de provoquer un fonctionnement indésirable.

EU Declaration of Conformity

Simple Audio hereby declares that this portable Bluetooth speaker is in compliance with the essential requirements and other relevant provisions of Directive 1999/5/EC and Directive 2011/65/EU. You may request copy of the original EU Declaration of Conformity by sending an email to: regulatory@simpleaudio.com

Recycling and Disposal Information

Your Simple Audio product uses advanced electronics, and may include a rechargeable battery. We encourage you to minimize your impact on the environment by properly disposing of your used electronic hardware, rechargeable batteries, and packaging.

Under European Union Directive 2002/96/EC, when you see this symbol on electrical or electronic equipment, packaging, or instruction manuals, it means that you must not dispose of the device as unsorted municipal waste. You are obligated to dispose of the device at public collection points set up for this purpose, as defined by your national laws. By recycling or reusing packaging and devices, you are helping protect our environment.

Simple Audio Two-Year Limited Warranty Summary

Simple Audio warrants the included hardware and accessories against defects in materials and workmanship for two-years from the date of original purchase. Simple Audio does not warrant against normal wear and tear, nor for damage due to abuse or accident. To obtain service, call Simple Audio or visit us at www.simpleaudio.com. Service options depend on the country where the service is requested. Full terms of the warranty, along with detailed information on obtaining service are available at www.simpleaudio.com. Warranty benefits are in addition to any rights provided under local consumer laws.

This page intentionally blank