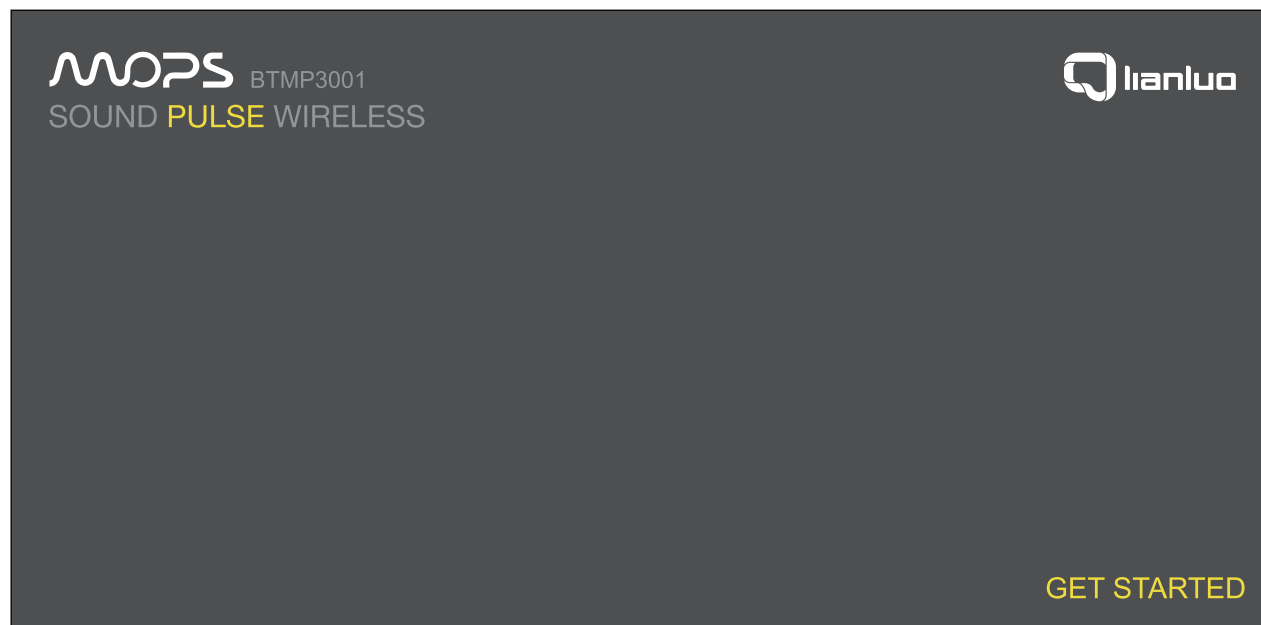
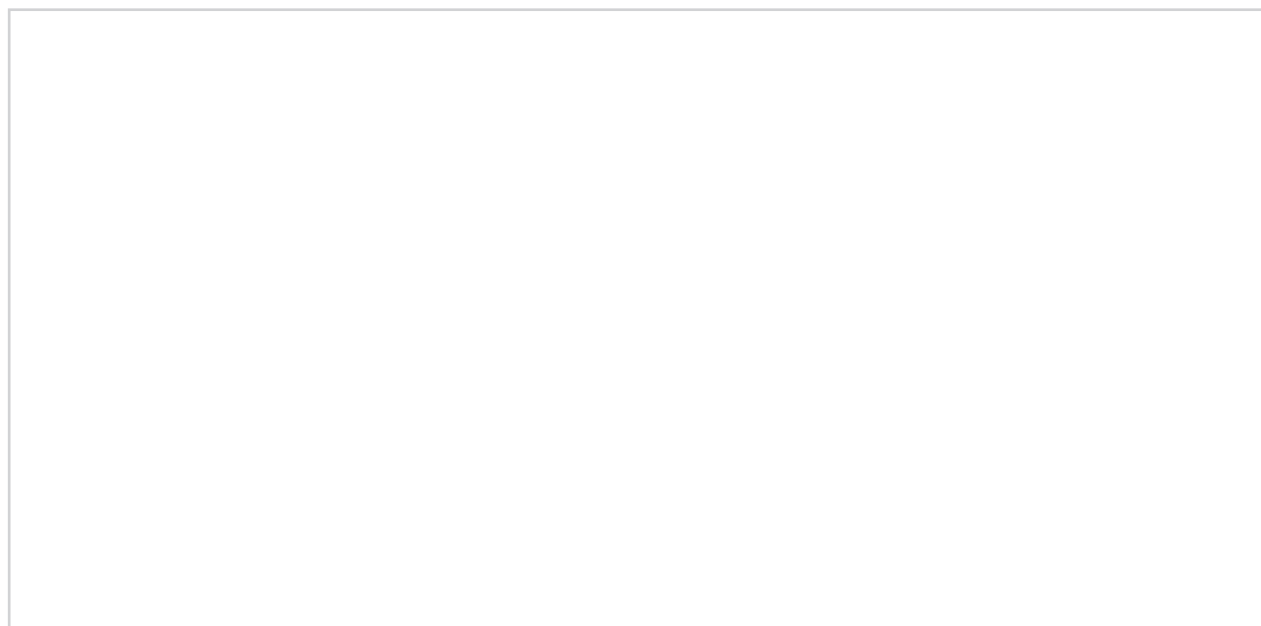


封面正面



封面背面



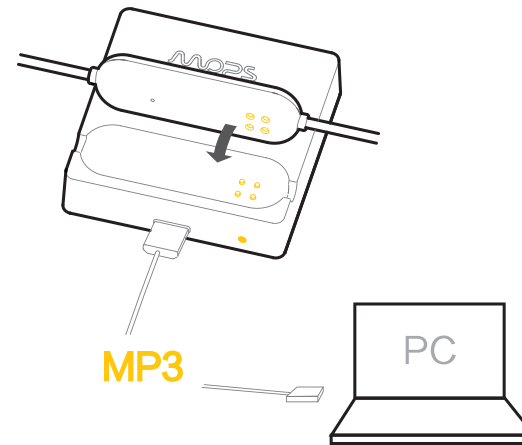
1 Charge and Transfer MP3 Songs

The charging base has a built-in 600mAh battery, which can charge the headset for three times. Prior to data transmission, please connect the charging base to PC and then place the headset's drive-by-wire device on the charging base.

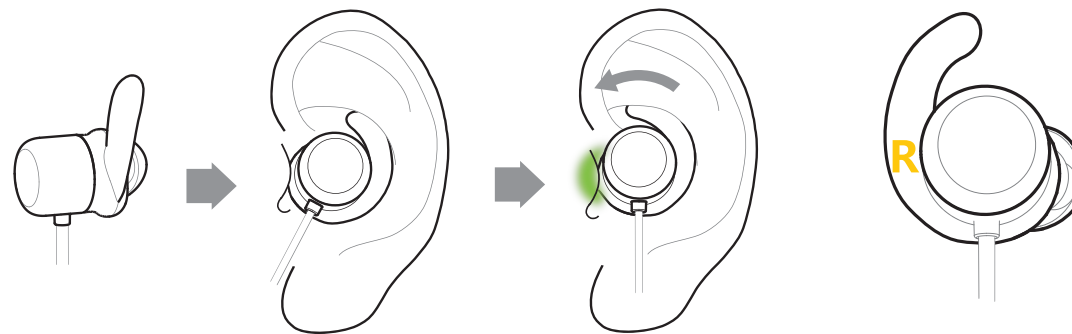
About the indicator light

Drive by wire: blue light flickering – connect to Bluetooth
Red light constantly on – charging
Blue light constantly on – charging completed

Base: Blue light flickering – charging
Red light flickering – battery low
Red light constantly on – charging the headset
Blue light constantly on – charging completed



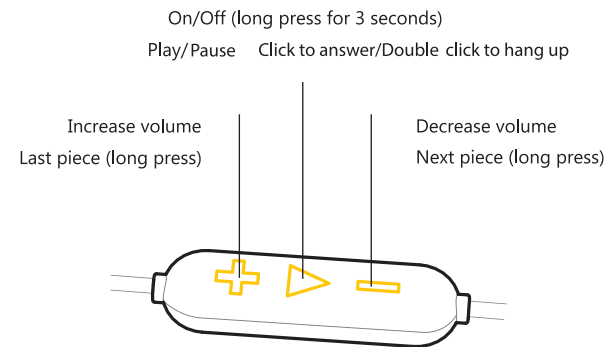
2 Wearing



Rotate the earplug to the proper position so that the heart rate sensor perfectly fits into the tragus.

L – left ear
R – right ear

3 Starting up and button guide

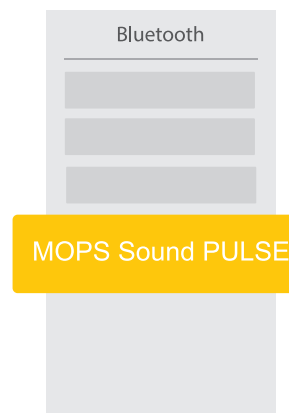


When connecting the device for the first time, please press the "On" button for 5 seconds until the red and blue lights flicker alternately.

4 Connect to cell phone

Select "MOPS Sound PULSE" under the Bluetooth option for connecting purpose.

Search "MOPS PULSE" from App Store or Google Play, and download and install it.



Download by scanning the QR code.

5 Touch control operation

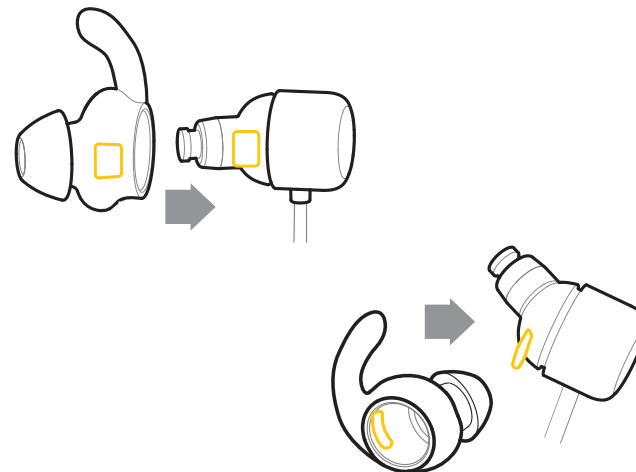
(Touch control function is applicable to right ear only)

The following are default settings, which can be customized through Apps:

- Single Click Report current sport data
- ● Double click Pause and resume training
- ● ● Click for three consecutive times User defined
- ⦿ Long press Start/end training



6 Select your suitable earplugs



Two pairs of large-size and small-size silica gel earplugs are additionally prepared for you in the portable bag, so that you can change them as needed. Please pay attention and align to the bayonet when replacing earplugs.

⚠ Be careful if you are allergic to silica gel!

NOTE: This equipment has been tested and found to comply with the limits for a Class B digital device, pursuant to part 15 of the FCC Rules. These limits are designed to provide reasonable protection against harmful interference in a residential installation. This equipment generates uses and can radiate radio frequency energy and, if not installed and used in accordance with the instructions, may cause harmful interference to radio communications. However, there is no guarantee that interference will not occur in a particular installation. If this equipment does cause harmful interference to radio or television reception, which can be determined by turning the equipment off and on, the user is encouraged to try to correct the interference by one or more of the following measures:

- Reorient or relocate the receiving antenna.
- Increase the separation between the equipment and receiver.
- Connect the equipment into an outlet on a circuit different from that to which the receiver is connected.
- Consult the dealer or an experienced radio/TV technician for help.

Changes or modifications not expressly approved by the party responsible for compliance could void the user's authority to operate the equipment. This device complies with Part 15 of the FCC Rules. Operation is subject to the following two conditions:

- (1) this device may not cause harmful interference, and
- (2) this device must accept any interference received, including interference that may cause undesired operation.

Complies with the essential protection requirements of Directives on Radio Equipment Directive 2014/53/EU.

FCCID: 2AAEM-BTMP3001

此页为空白页

Product Warranty Card

Goods can be returned within 7 days upon purchase and replaced within 15 days in case of any quality problems by presenting this Warranty Card. Beyond 15 days, the main part has a warranty period of one year, while charging line and charging interconnecting device 3 months. Warranty is implemented in the form of replacing the parts to be repaired. Appearance wearing, expiration of warranty period and damages caused by human factors are not within the warranty scope.

Notes on Repair Service

Damages caused by human factors: damages arising from erroneous use, misuse or usage beyond the application scope; damages resulting from external force, liquid inlet or force majeure factors; fracture of wire cover and wire breakage owing to excessive stretching or twisting; the detection results shall prevail in the implementation process.

Customer Service Tel.: 400-968-5665
After-sales Website: www.lianluo.com
After-sales Email: after-saleser@lianluo.com

Product Name: _____

Product Model: _____

Purchase Date: _____

Breakdown Particulars: _____

Repair Results: _____

Contact Tel.: _____

After-sales Process

A user is entitled to after-sales service through the original purchase channel, including return, replacement and repair of goods. With respect to malfunctioning machines to be repaired within the warranty period (malfunctions existing without man-made damages), sellers shall provide replacement of main part and accessories. Where the warranty period is expired, other services provided by sellers can be selected.

Performance Fault List:

Unable to boot	With the power on, it is unable to boot the main part. No response.	Key failure	Key without functional response.
Not charging	Main part cannot be charged. Charging interconnecting device not working, poor contact.	Key in disorder	Key subject to functional disorder.
Short life	Life of the main part and the charging box is substantially shorter than what is labeled.	Key falling off	Key icon discolored or segment missing.
Abnormal boot	Playing device fails to locate headset Bluetooth signal.	Steel mesh deformed	Headset steel mesh deformed.
Cannot connect	Playing device can locate headset Bluetooth signal but cannot connect to it.	Headphone cover cracking	Headphone cover cracking.
One of the headphones has no sound	One of the headphones has no sound.	Earplug missing/not loaded	Earplug missing/not loaded in the headset package.
Both of the headphones have no sound	Both of the headphones have no sound.	Earplugs are of different sizes	The matched earplugs are of different sizes.
Headset has small volume	Headset has smaller volume than the average.	USB cable	USB cable is incapable of charging or data transmission and has bad contact.
Headset noise	Headset contains abnormal sounds such as current sound and cracking voice.	Headset connecting line	Connecting line has no broken cover, stretching or fracture, and yet wire breakage and poor contact problems exist.
Not speaking	Headset microphone not speaking.	Heart rate value abnormal	Heart rate sensor is not working, so heart rate value is displayed as abnormal.
Small call volume	Headset microphone speaking in small volume.	Failure to read-write	Main part can be booted, but read-write internal data has failed.
Call with noise	Headset microphone speaking with noise.	Capacity error	Memory has a physical capacity smaller than the nominal capacity. (Conversion formula: 1GB=1000MB)

快速入门指南

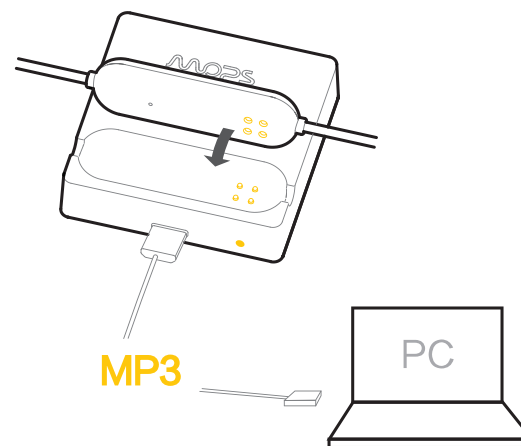
1 充电及导入MP3

充电底座内置600mAh电池，可为耳机充电三次以上。若要进行数据传输，请先将充电底座与PC连接，再将耳机线控放置在充电底座上。

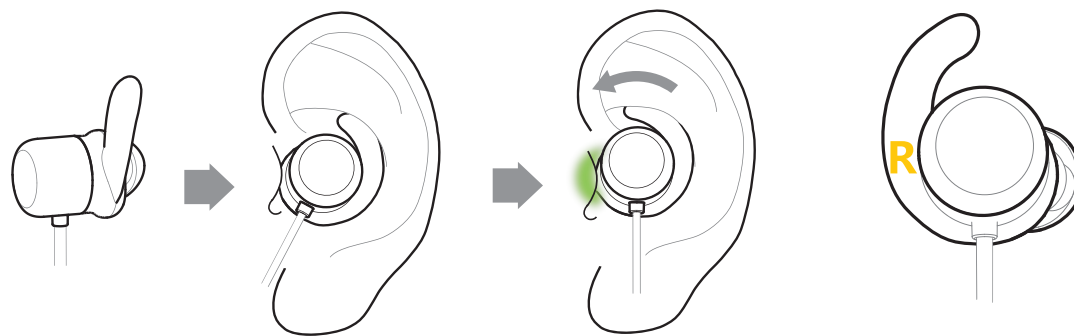
关于指示灯

线控：蓝灯闪烁——连接蓝牙
红灯常亮——正在充电
蓝灯常亮——充电完成

底座：蓝灯闪烁——正在充电
红灯闪烁——电量不足
红灯常亮——为耳机充电
蓝灯常亮——充电完成



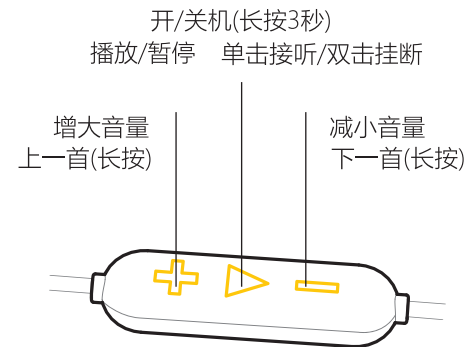
2 佩戴



旋转耳塞到合适位置将心率感应器与耳屏完美贴合。

L-左耳
R-右耳

3 开机及按键指南

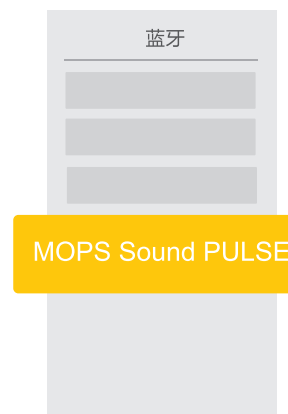


首次连接设备时，请长按线控开机键5秒，直到红蓝灯交替闪烁。

4 连接手机

从蓝牙选项中选择取“MOPS Sound PULSE”进行连接。

请在App Store™或Google Play™中搜索“MOPS PULSE”下载安装。



扫描二维码下载 APP

5 触控操作

(仅右耳有触控功能)

以下为默认设置，您通过App可自定义：

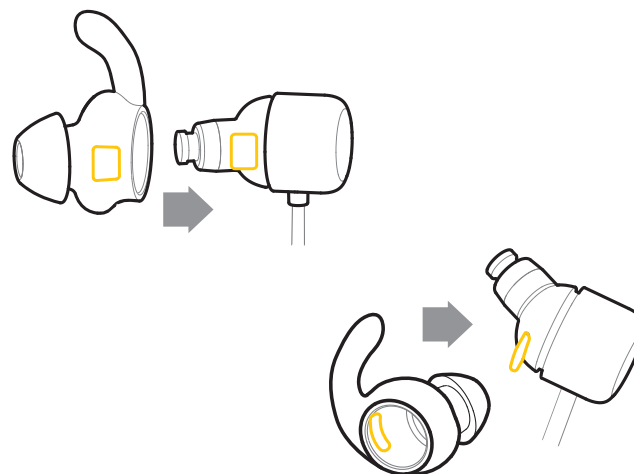
- 单击 播报当前运动数据
- 双击 暂停/恢复训练
- 连击三次 用户自定义
- ⦿ 长按 开始/结束训练



6 选择适合您的耳塞

便携包内另附有大号、小号两副硅胶耳塞，请您按需更换。更换耳塞时请注意对准卡口。

⚠ 硅胶过敏体质者请慎用！



产品保修卡

凭本保修卡，自购买之日起7 日内产品存在质量问题可退货，15 日内质量问题可换货，超过 15 日主机保修 1 年，充电线、充电转接盒保修 3 个月。维修按照以换代修形式进行质保操作。外观磨损、超出质保期、人为因素造成的损坏不予保修。

维修服务说明

人为损坏范围：误用、滥用、超出产品适用范围使用造成的损坏；因外力、进液、不可抗力造成的损坏；线材因过度拉伸、扭曲发生的外皮破裂，导线断裂；具体情况以售后实际检测为准。

客服电话：400-968-5665
售后网址：www.lianluo.com
售后邮箱：after-saleservice@lianluo.com

产品名称： _____

产品型号： _____

购买日期： _____

故障情况： _____

维修结果： _____

联系电话： _____

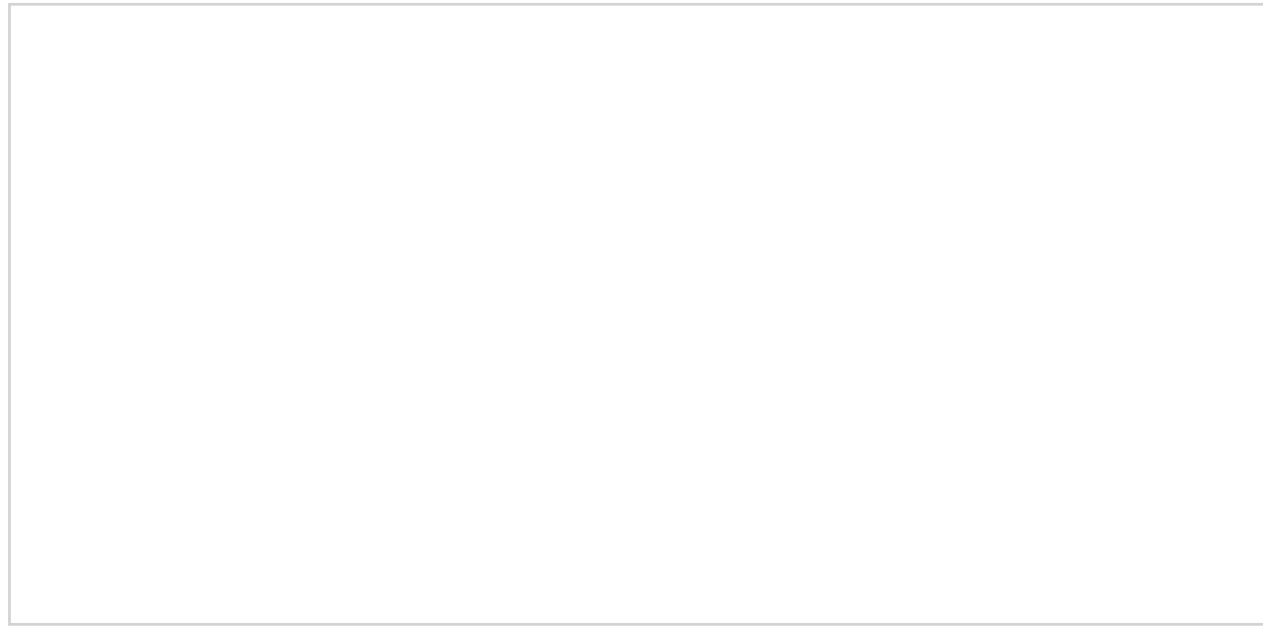
售后流程

用户与原购买渠道获取售后服务，包含退换货业务，质保期内送修的故障机（故障存在，无人为损坏）由销售商提供主机、附件更换服务。超出质保期后可选择销售商提供的其他服务。

性能故障表：

无法启动	开启电源后，主机无法启动，无响应	按键失效	按键无功能响应
不充电	主机电量无法充入，充电转接盒不工作、接触不良	按键错乱	按键功能混乱
使用时间短	主机、充电盒大幅低于产品标明时间	按键脱落	按键图标异色、缺划
启动异常	播放设备无法搜索到耳机蓝牙信号	钢网变形	耳机钢网变形
无法连接	播放设备可以搜索到耳机蓝牙信号，但无法连接	耳壳开裂	耳机壳开裂
耳机单耳无声	耳机其中一个没有声音	耳塞缺失/漏装	耳机包装内出现耳塞缺失或漏装
耳机双耳无声	两个耳机均没有声音	耳塞大小不一	配套的耳塞大小不一
耳机声小	耳机声音较正常声音偏小	数据线	数据线无法充电、无法数据传输、接触不良
耳机杂音	耳机声音存在电流音、破音等非正常发声	耳机连接线	连接线无破皮、拉长、断裂，发生导线断裂、接触不良
不送话	耳机麦克风不送话	心率数值异常	心率传感器不工作，心率数值显示异常
通话声小	耳机麦克送话声音小	无法读写	主机可开机，但不可写入、读取内部数据
通话杂音	耳机麦克送话杂音	容量有误	存储器物理存储容量小于标称容量（换算关系：1GB=1000MB）

封底背面



封底

