

English

Thank you for purchasing this JVC product. Before you begin operating this unit, please read the operating instructions carefully to be sure you enjoy the best possible performance. If you have any questions, please consult your JVC dealer.

CAUTION

- To reduce the risk of electrical shocks, fire, etc.
- Do not disassemble or modify the unit.
 - Do not allow flammable, water or metallic objects to enter the unit.

For your safety...

- Stop using the headphones if they are causing great discomfort or irritation on the skin and the ears. They may damage your skin and cause rash or inflammation.
- If ear piece or other parts of headphones become lodged in your ear, be careful not to push it deep into the ear canal and seek skilled medical assistance to remove the piece. Damage to the ear may be caused by non-professionals attempting to remove the piece.
- Store the ear pieces in a safe place where children cannot reach them to avoid the risk of a possible accident or hazard such as swallowing them.
- In dryer air conditions such as in winter, you may feel some static shock when using the headphones.

Precautions for use

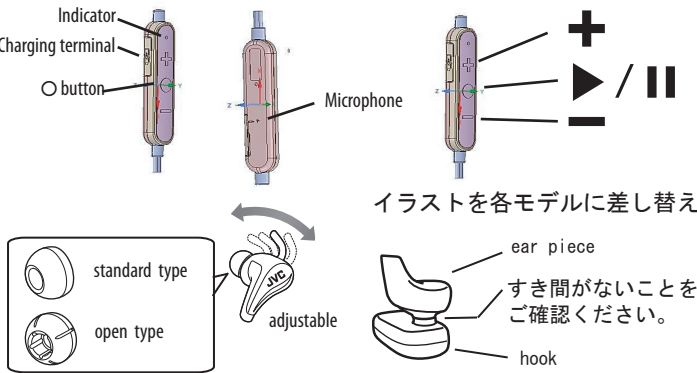
- For replacement of the ear pieces, please consult your local dealer.
- These headphones are compliant with IPX2. Do not submerge them in water.
- 磁気の注記を追加
- Be sure to close the charging terminal cover during use.

フリクションノイズの注記を削除
USBケーブルの注記2つを削除
IPXの注記を最適化する

NOTE

If the System does not work correctly, charge the System to reset it.

PARTS



Specifications

BLUETOOTH

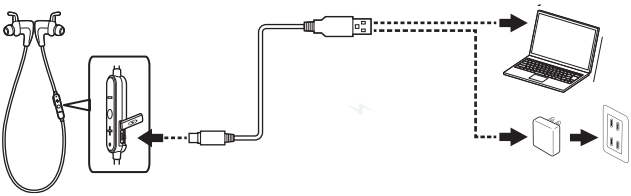
Standard	BLUETOOTH v3.0 Class 2	Max. communication distance	Approx. 10 m (33 ft)
Profiles	A2DP/AVRCP/HSP/HFP	Codecs	SBC
Frequency range	2.402 GHz - 2.480 GHz	Output power	+4 dBm (MAX). 0 dBm (AVE) Power Class 2

Power supply/General

Power supply	Internal rechargeable lithium battery
Frequency response	20 Hz - 20 000 Hz
Battery life	Approx. *hrs (Depends on usage conditions.)
Charging time	Approx. *hrs
Usage temperature range	5 °C (41 °F) to 40 °C (104 °F)
Mass	** g (*.** oz) (including internal rechargeable battery)
Accessories	Charging cable / ear pieces

Designs and specifications are subject to change without notice.
EUT has the power settings by the software as follows;
Power: 0x03
Software: RF Control Kit, Version: 1.0
The Bluetooth® word mark and logos are registered trademarks owned by Bluetooth SIG, Inc. and any use of such marks by JVC KENWOOD Corporation (JVC) is under licence. Other trademarks and trade names are those of their respective owners.

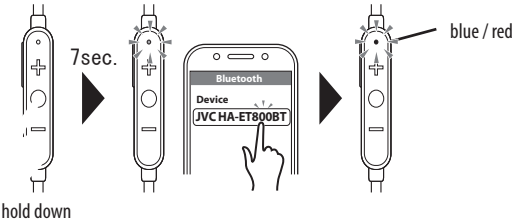
CHARGING



When charging the headphones, be sure to use a USB to AC adapter with DC 5V power output to avoid malfunction or abnormal heat generation.

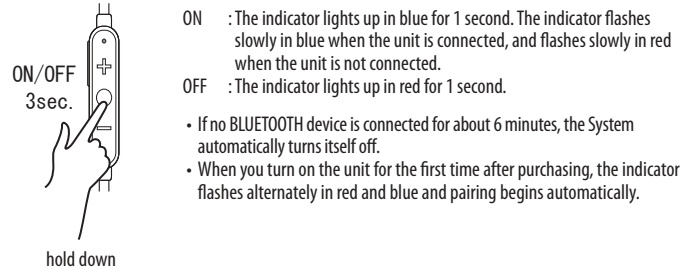
- The indicator lights up in red, and charging starts. When charging is complete, the indicator goes out.
- When the remaining battery power is low, the alarm sounds every 2 minutes.
 - Operation is not possible while charging.

CONNECTING



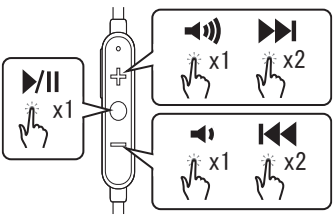
When the power is off, hold the O button down (for at least 7 seconds) until the indicator flashes alternately in red and blue.
Select "JVC HA-ET800BT" from the device list. The indicator flashes in blue when pairing is complete.
During the pairing process, the other device may require input of a PIN code. In such a case, enter "0000" as the PIN code for the System.

ON and OFF

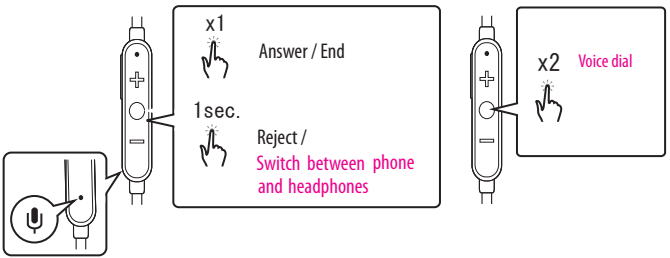


- ON : The indicator lights up in blue for 1 second. The indicator flashes slowly in blue when the unit is connected, and flashes slowly in red when the unit is not connected.
- OFF : The indicator lights up in red for 1 second.
- If no BLUETOOTH device is connected for about 6 minutes, the System automatically turns itself off.
 - When you turn on the unit for the first time after purchasing, the indicator flashes alternately in red and blue and pairing begins automatically.

MUSIC



PHONE



- This unit can not guarantee operation of all of the remote control functions.

OTHERS

- Three types of ear piece are provided: standard type ear pieces, and open type ear pieces that make it easier to hear external sounds. Use the most suitable ear pieces for your listening environment.
- Two types of ear piece are provided: standard type ear pieces, and open type ear pieces that make it easier to hear external sounds. Use the most suitable ear pieces for your listening environment.
- Attach the ear pieces firmly when replacing them; failure to do so may result in the ear pieces getting lodged in your ear canal when removed, thus becoming a possible health hazard.
- The ear pieces deteriorate with age even in normal use and maintenance.
- 関連アプリ"JVC Run & Music"があります。ダウンロードしてお使いください。

NOTE: This equipment has been tested and found to comply with the limits for a Class B digital device, pursuant to part 15 of the FCC Rules. These limits are designed to provide reasonable protection against harmful interference in a residential installation. This equipment generates uses and can radiate radio frequency energy and, if not installed and used in accordance with the instructions, may cause harmful interference to radio communications. However, there is no guarantee that interference will not occur in a particular installation. If this equipment does cause harmful interference to radio or television reception, which can be determined by turning the equipment off and on, the user is encouraged to try to correct the interference by one or more of the following measures:

- Reorient or relocate the receiving antenna.
- Increase the separation between the equipment and receiver.
- Connect the equipment into an outlet on a circuit different from that to which the receiver is connected.
- Consult the dealer or an experienced radio/TV technician for help

Changes or modifications not expressly approved by the party responsible for compliance could void the user's authority to operate the equipment. This device complies with Part 15 of the FCC Rules. Operation is subject to the following two conditions:

- (1) this device may not cause harmful interference, and
- (2) this device must accept any interference received, including interference that may cause undesired operation.