

HMDX

hmdx

Hey. Have we seen you here before?

Register your earbuds at www.hmdxaudio.com. Information like where you bought it and how you're using it is like gold for the people who make these earbuds. Do them a solid, will ya?

HX-EP250


USER GUIDE AND WARRANTY INFORMATION

Por manual de instrucciones e informaci3n de garant3a en espa1ol visitenos en www.hmdxaudio.com


The HMDX Craze has friends—like lots of them. Invite them along next time for an even more epic night. You can check out all their online profiles at www.hmdxaudio.com.

Setup is pretty easy, but we put a manual together just in case you need it. It's full of information and sarcasm—just like that English teacher you had that crazy semester.


Package Contents




User Manual




Earbuds



Charging Cord



Ear Hooks

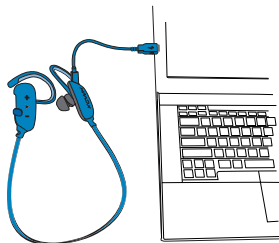


Ear Tips

Just Charge It

Charging the earbuds is so easy you've probably figured it out by now, but just in case, you've got two options: your computer or a wall outlet.

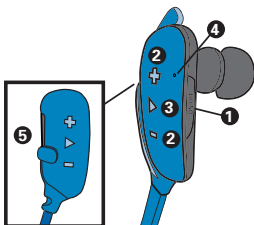
1. The cord that came with the earbuds—the one with the USB on one end and the Micro USB on the other—will work with your computer.
2. If you want to use the wall outlet, you'll need to pick up a power cord with a Micro USB the next time you're at the store, or use any USB AC adapter, including the one for your cell.



Now go get ready for an epic night while your earbuds do too. They need about 3 hours of me time for 4 hours of party time.

Control Your Destiny...or at Least Your Earbuds

1. That's the power button, press and hold for 5 seconds to power on.
2. Turn the music up or down. (Wait, why do you need to turn it down?)
3. Push it to play, push it again to pause.
4. That light lets you know when your device is charging and when *Bluetooth* has the hook-up.
5. The power cord goes here.



Bluetooth® Connection: It's a Setup

Like any amazing couple, this one starts with a connection—one between your device and the earbud's *Bluetooth*.

Here's how it works:

1. We know you're probably going to think, "derp" with this one, but we have to say it: Make sure the smartphone, tablet or computer you want to hook up to the earbuds has *Bluetooth*. (There. We got that out of the way.)
2. Turn on the earbuds and look for the little blinking light.
3. Do whatever your device needs you to do on its end. (We don't know what you're using. We're not spies.)
4. Look for HMDX CRAZE in your device's *Bluetooth* list or click YES—whatever pops up on your device—and BAM you're connected.
5. Now hit PLAY on your earbuds and crank it up—or down if you're lame.

You're probably only going to have to do this once, unless your device goes through a major I-just-dropped-it-in-the-pool kind of reboot. The device and *Bluetooth* will find each other every time just as long as the earbuds are set to *Bluetooth* and your device's *Bluetooth* is, you know—on.

If you're connecting to a computer, you may have some extra steps on that end. You'll have to get that information from the computer company.

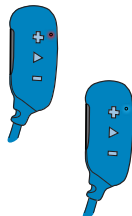
Depending on your device you may be prompted to enter a pairing code. If prompted enter "0000" as the code.

To clear the pairing history hold the POWER button for 8 seconds.

Note: If you turn on your Craze Earbuds but haven't started the party, they will automatically power off after 2 minutes of unpaired inactivity.

Allow Us to Shed Some Light

	What It Looks Like	What it Means
CHARGE	Flashing Red	Low Battery
	Red (when plugged in)	Charging
	Light turns off (while plugged in)	Fully Charged
	Quick Blue Flash	Reconnect Mode
	Slow Blue Flash	Connected
	Quick Blue/Red Flashing	Pairing Mode



Hello? Speakerphone? Yes!

When friends call to interrupt your party of one—and you know they will—answer the phone without disconnecting from your HMDX Craze. Yes, that's right. Your earbuds are a speakerphone too. How amazing is that?

Here's how it works:

1. Make sure your phone and earbuds are connected through *Bluetooth* and not on a "break."
2. Answering and ending a call works the same way: simply click the PLAY/PAUSE button on your Craze.
3. If you'd rather not talk, hold down the PLAY/PAUSE button on your Craze for three seconds to ignore the call.

THE COOLEST PART: The Craze knows when a call is coming in and pauses the music before ringing. When you hang up, the music starts where it left off—and so does the party. If it's you making the call, just start dialing from your phone, and the Craze automatically does its hands-free thing. Isn't it refreshing to know your earbuds totally get you?

Note: If your Craze Earbuds are connected to a smart phone, you can talk to Siri (or any other voice control assistant). Just hold down the PLAY/PAUSE button and Voila!

Coming Clean

A soft, dry towel is all you need to clean off your earbuds. Using water, harsh cleaners or anything else only starts messing with the mechanics inside. So, yeah, don't do it.

Stuff The Government Makes Us Say

FCC Disclaimer:

Note: This device complies with part 15 of the FCC Rules. Operation is subject to the following two conditions: (1) This device may not cause harmful interference, and (2) this device must accept any interference received, including interference that may cause undesired operation.

Note: This equipment has been tested and found to comply with the limits for a Class B digital device, pursuant to part 15 of the FCC Rules. These limits are designed to provide reasonable protection against harmful interference in a residential installation.

This equipment generates, uses and can radiate radio frequency energy and, if not installed and used in accordance with the instructions, may cause harmful interference to radio communications. However, there is no guarantee that interference will not occur in a particular installation.

If this equipment does cause harmful interference to radio or television reception, which can be determined by turning the equipment off and on, the user is encouraged to try to correct the interference by one or more of the following measures:

- Reorient or relocate the receiving antenna.
- Increase the separation between the equipment and receiver.
- Connect the equipment into an outlet on a circuit different from that to which the receiver is connected.
- Consult the dealer or an experienced radio/TV technician for help.

Note: Changes or modifications not expressly approved by HMDX could void the user's authority to operate this equipment.

One Year Limited Warranty

For detailed Warranty Instructions and Information visit:

<http://www.hmdxaudio.com/customer-support/warranty-1yr>

To obtain warranty service on your HMDX product, contact a Consumer Relations Representative by telephone at 1-800-753-3000 or email cservice@hmdxaudio.com for assistance. Please make sure to have the model number of the product available. Representatives are available 8:30am - 7:00pm EST Monday-Friday.

Stuff Our Lawyers Make Us Say

IMPORTANT SAFEGUARDS:

When using an electrical product, basic precautions should always be followed, including the following:

READ ALL INSTRUCTIONS BEFORE USING

- **WARNING:** To avoid hearing damage, make sure that the volume on your device is turned down before powering on your earbuds.
- Use this product only for its intended use as described in this manual.
- Do not use attachments not recommended by HMDX.
- HMDX is not liable for any damage caused to Smartphones, iPod/MP3 player or any other device.
- Do not place or store this product where it can fall or be dropped into a tub or sink.
- Do not place or drop into water or any other liquid.
- Not for use by children. THIS IS NOT A TOY.
- Never operate this product if it has a damaged cord, plug, cable or housing.
- Keep away from heated surfaces.
- Only set on dry surfaces. Do not place on surface wet from water or cleaning solvents.

A Message From The Environment

WARNING:

This product has an internal, non-replaceable lithium battery. Please dispose in accordance with your local state, province and country guidelines.

This product contains small parts that may present a choking hazard for young children.

CAUTION: All servicing of this product must be performed by authorized HMDX Service Personnel only

Por manual de instrucciones e Información de garantía en español visítenos en www.hmdxaudio.com

©2014 HMDX. All Rights Reserved.
IB-HXEP250

HMDX

Hey. Have we seen you here before?

Register your earbuds at www.hmdxaudio.com. Information like where you bought it and how you're using it is like gold for the people who make these earbuds. Do them a solid, will ya?

HX-EP250

USER GUIDE AND WARRANTY INFORMATION

Por manual de instrucciones e información de garantía en español visítenos en www.hmdxaudio.com

The HMDX Craze has friends—like lots of them. Invite them along next time for an even more epic night. You can check out all their online profiles at www.hmdxaudio.com.

Setup is pretty easy, but we put a manual together just in case you need it. It's full of information and sarcasm—just like that English teacher you had that crazy semester.

Package Contents



User Manual



Earbuds



Charging Cord



Ear Hooks

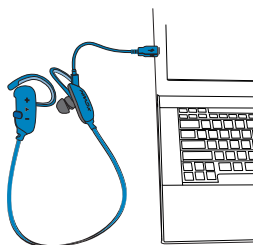


Ear Tips

Just Charge It

Charging the earbuds is so easy you've probably figured it out by now, but just in case, you've got two options: your computer or a wall outlet.

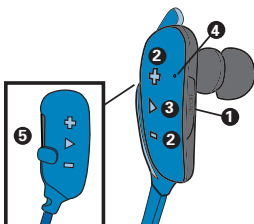
1. The cord that came with the earbuds—the one with the USB on one end and the Micro USB on the other—will work with your computer.
2. If you want to use the wall outlet, you'll need to pick up a power cord with a Micro USB the next time you're at the store, or use any USB AC adapter, including the one for your cell.



Now go get ready for an epic night while your earbuds do too. They need about 3 hours of me time for 4 hours of party time.

Control Your Destiny...or at Least Your Earbuds

1. That's the power button, press and hold for 5 seconds to power on.
2. Turn the music up or down. (Wait, why do you need to turn it down?)
3. Push it to play, push it again to pause.
4. That light lets you know when your device is charging and when *Bluetooth* has the hook-up.
5. The power cord goes here.



Bluetooth® Connection: It's a Setup

Like any amazing couple, this one starts with a connection—one between your device and the earbud's *Bluetooth*.

Here's how it works:

1. We know you're probably going to think, "derp" with this one, but we have to say it: Make sure the smartphone, tablet or computer you want to hook up to the earbuds has *Bluetooth*. (There. We got that out of the way.)
2. Turn on the earbuds and look for the little blinking light.
3. Do whatever your device needs you to do on its end. (We don't know what you're using. We're not spies.)
4. Look for HMDX CRAZE in your device's *Bluetooth* list or click YES—whatever pops up on your device—and BAM you're connected.
5. Now hit PLAY on your earbuds and crank it up—or down if you're lame.

You're probably only going to have to do this once, unless your device goes through a major I-just-dropped-it-in-the-pool kind of reboot. The device and *Bluetooth* will find each other every time just as long as the earbuds are set to *Bluetooth* and your device's *Bluetooth* is, you know—on.

If you're connecting to a computer, you may have some extra steps on that end. You'll have to get that information from the computer company.

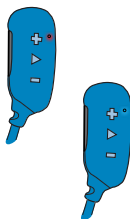
Depending on your device you may be prompted to enter a pairing code. If prompted enter "0000" as the code.

To clear the pairing history hold the POWER button for 8 seconds.

Note: If you turn on your Craze Earbuds but haven't started the party, they will automatically power off after 2 minutes of unpaired inactivity.

Allow Us to Shed Some Light

	What It Looks Like	What it Means
CHARGE	Flashing Red	Low Battery
	Red (when plugged in)	Charging
	Light turns off (while plugged in)	Fully Charged
	Quick Blue Flash	Reconnect Mode
	Slow Blue Flash	Connected
	Quick Blue/Red Flashing	Pairing Mode



Hello? Speakerphone? Yes!

When friends call to interrupt your party of one—and you know they will—answer the phone without disconnecting from your HMDX Craze. Yes, that's right. Your earbuds are a speakerphone too. How amazing is that?

Here's how it works:

1. Make sure your phone and earbuds are connected through *Bluetooth* and not on a "break."
2. Answering and ending a call works the same way: simply click the PLAY/PAUSE button on your Craze.
3. If you'd rather not talk, hold down the PLAY/PAUSE button on your Craze for three seconds to ignore the call.

THE COOLEST PART: The Craze knows when a call is coming in and pauses the music before ringing. When you hang up, the music starts where it left off—and so does the party. If it's you making the call, just start dialing from your phone, and the Craze automatically does its hands-free thing. Isn't it refreshing to know your earbuds totally get you?

Note: If your Craze Earbuds are connected to a smart phone, you can talk to Siri (or any other voice control assistant). Just hold down the PLAY/PAUSE button and Voila!

Coming Clean

A soft, dry towel is all you need to clean off your earbuds. Using water, harsh cleaners or anything else only starts messing with the mechanics inside. So, yeah, don't do it.

Stuff The Government Makes Us Say

FCC Disclaimer:

Note: This device complies with part 15 of the FCC Rules. Operation is subject to the following two conditions: (1) This device may not cause harmful interference, and (2) this device must accept any interference received, including interference that may cause undesired operation.

Note: This equipment has been tested and found to comply with the limits for a Class B digital device, pursuant to part 15 of the FCC Rules. These limits are designed to provide reasonable protection against harmful interference in a residential installation.

This equipment generates, uses and can radiate radio frequency energy and, if not installed and used in accordance with the instructions, may cause harmful interference to radio communications. However, there is no guarantee that interference will not occur in a particular installation.

If this equipment does cause harmful interference to radio or television reception, which can be determined by turning the equipment off and on, the user is encouraged to try to correct the interference by one or more of the following measures:

- Reorient or relocate the receiving antenna.
- Increase the separation between the equipment and receiver.
- Connect the equipment into an outlet on a circuit different from that to which the receiver is connected.
- Consult the dealer or an experienced radio/TV technician for help.

Note: Changes or modifications not expressly approved by HMDX could void the user's authority to operate this equipment.

One Year Limited Warranty

For detailed Warranty Instructions and Information visit:

<http://www.hmdxaudio.com/customer-support/warranty-1yr>

To obtain warranty service on your HMDX product, contact a Consumer Relations Representative by telephone at 1-800-753-3000 or email cservice@hmdxaudio.com for assistance. Please make sure to have the model number of the product available. Representatives are available 8:30am - 7:00pm EST Monday-Friday.

Stuff Our Lawyers Make Us Say

IMPORTANT SAFEGUARDS:

When using an electrical product, basic precautions should always be followed, including the following:

READ ALL INSTRUCTIONS BEFORE USING

- **WARNING:** To avoid hearing damage, make sure that the volume on your device is turned down before powering on your earbuds.
- Use this product only for its intended use as described in this manual. Do not use attachments not recommended by HMDX.
- HMDX is not liable for any damage caused to Smartphones, iPod/MP3 player or any other device.
- Do not place or store this product where it can fall or be dropped into a tub or sink.
- Do not place or drop into water or any other liquid.
- Not for use by children. **THIS IS NOT A TOY.**
- Never operate this product if it has a damaged cord, plug, cable or housing.
- Keep away from heated surfaces.
- Only set on dry surfaces. Do not place on surface wet from water or cleaning solvents.

A Message From The Environment

WARNING:

This product has an internal, non-replaceable lithium battery. Please dispose in accordance with your local state, province and country guidelines.

This product contains small parts that may present a choking hazard for young children.

CAUTION: All servicing of this product must be performed by authorized HMDX Service Personnel only

Por manual de instrucciones e Información de garantía en español visítenos en www.hmdxaudio.com

©2014 HMDX. All Rights Reserved.
IB-HXEP250