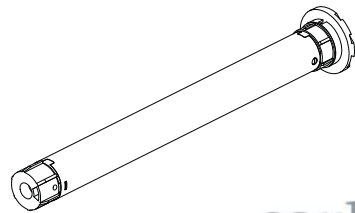


# User Manual

## DC Tubular motor

### ABC-05



coulisse

**WARNING:** Important safety instructions. Follow all instructions, since incorrect installation can lead to severe injury.

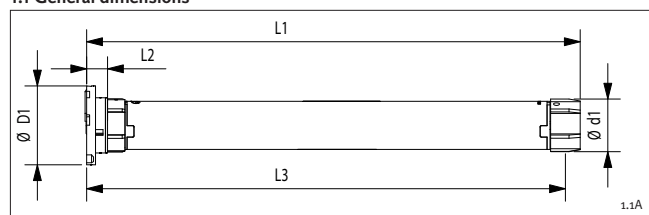
**WARNING:** Do not make repairs yourself. Do not attempt to open the device or disassemble it. You run the risk of electric shock and voiding the limited warranty. No user-serviceable parts are inside.



## 1. General information

The ABC-05 is a tubular motor to motorize Coulisse Absolute Roller. The tubular motor is compatible with Coulisse tubes and makes it possible to operate your blind motorised with minimum noise. The motors are operated with a Coulisse remote control only. Endpoints and favorite position are set with the remote control. The motor is energy efficient and can also be battery operated.

### 1.1 General dimensions



Type	L1	L2	L3	Ø D1	Ø d1
ABC-05	250	11	243	40	26,5

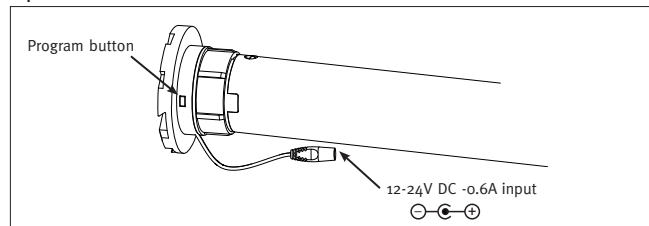
### 1.2 Performances

Type	Power supply	Rated power	Torq - rpm	Operating temp.	Max. channels to pair
ABC-05	12-24V DC	0.6A - 7W	0.8Nm - 28 rpm	5°-60°	32 channels

### 1.3 Compatibility

Type	Roller	Venetian	Other
ABC-05	28, 30, 35mm	-	-

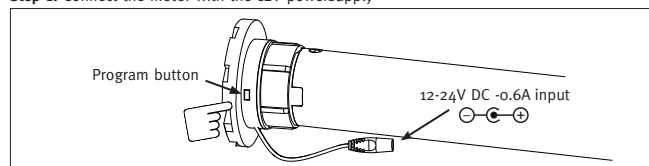
### 1.4 Connectors and buttons



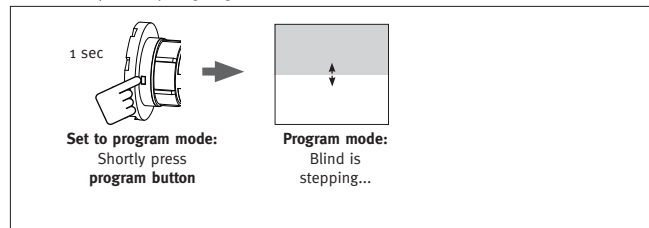
## 2. Programming and operating

### 2.1 First use

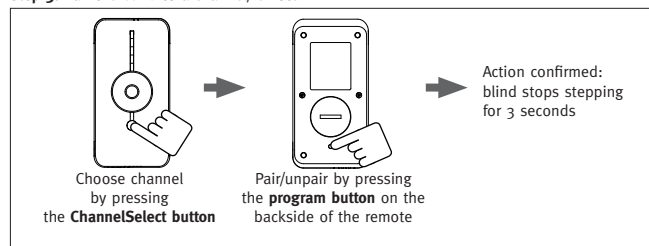
**Step 1:** Connect the motor with the 12V powersupply



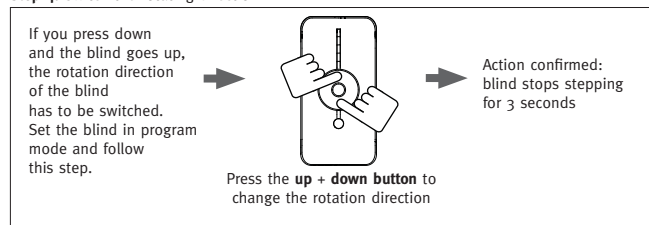
**Step 2:** Set the blind in program-mode by pushing the **program button** (also possible by using 'SingleSelect', see manual remote control\*)



**Step 3:** Pair the blind to a channel/remote

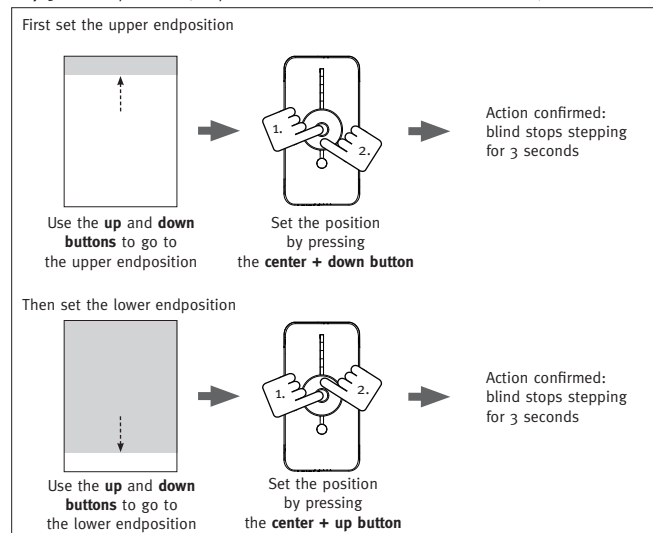


**Step 4:** Switch the rotating direction



\*Manuals are also available on our website [www.coulisse.nl](http://www.coulisse.nl)

**Step 5:** Set endpositions (the positions can also be set after first installation)

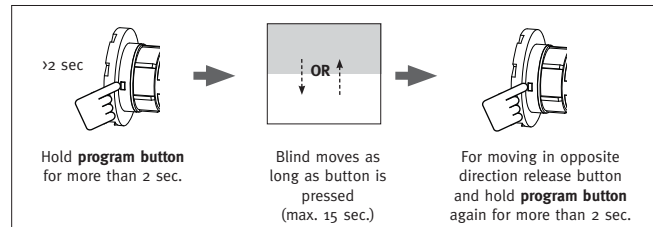


**Step 6:** Exit the program-mode by pressing the **program button** again



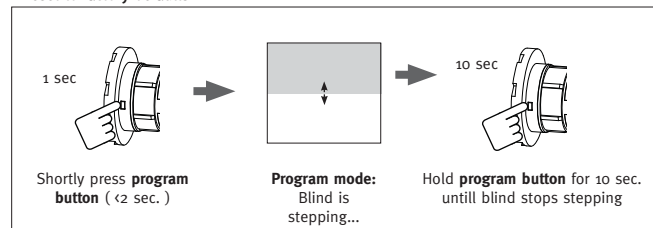
### 2.2 Normal use

- Manual Control

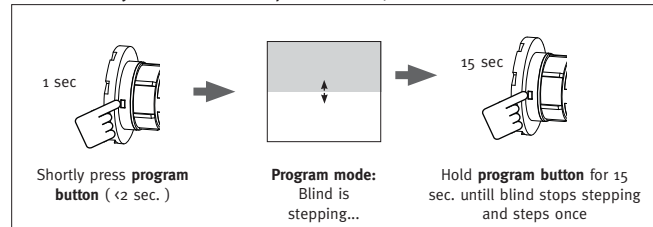


### 2.3 Reset

- Reset to factory defaults



- Reset to factory defaults & Erase all paired channels/remotes



### 2.4 Additional blind settings

Additional blind settings:	Available
Switch rotation direction	Yes
Favorite position	Yes
BatteryMode	Yes

We refer to the manual of the Coulisse Remote control to set the additional blind settings.

## 3. Tips & Troubleshooting

Please check [www.coulisse.nl](http://www.coulisse.nl) for the latest tips and troubleshooting guide

## 4. Safety & Cleaning

### 4.1 Safety

**WARNING:** Do not make repairs yourself. Do not attempt to open the device or disassemble it. You run the risk of electric shock and voiding the limited warranty. No user-serviceable parts are inside.

- Do not let children play with the blind and/or remote control.
- Only use powersupplies or batteries that comply with the specifications on the motor.
- In case of malfunction, unplug the device or remove the batteries and contact your dealer.
- Take care that the blind can move freely and is not blocked by objects.
- Take care that the powersupply cable is out of reach for children.
- Do not paint the device.
- Keep the device dry.

### 4.2 Cleaning

Follow these general rules when cleaning the outside of the device and its components:

- Make sure the device is unplugged.
- Use a damp, soft, lint-free cloth. Avoid getting moisture in openings.
- Don't use aerosol sprays, solvents, alcohol, or abrasives.

## 5. Service & Support

**WARNING:** Do not make repairs yourself. Do not attempt to open the device or disassemble it. You run the risk of electric shock and voiding the limited warranty. No user-serviceable parts are inside.

### Online Resources

For the latest information and updated manuals go to [www.coulisse.nl](http://www.coulisse.nl).

### Obtaining Warranty Service

First follow the advice in this booklet and then go to your local dealer. If the product appears to be damaged or does not function properly, go to your local dealer for instructions on how to obtain warranty service.

Disclaimer:

© Copyright Coulisse

All rights reserved. No part of this publication may be reproduced, stored in a retrieval system, or transmitted, in any form, by any means, electronic, mechanical, photocopying, recording, digital or otherwise without the written permission of the publisher.

Although this manual has been composed with the most care, Coulisse B.V. does not accept any responsibility for damage due to mistakes and/or faults in this manual.

Coulisse B.V. reserves the right to revise the manual and to revise and/or changes its content at any time, without obligation to notify any person or entity of such revisions or changes.

The most recent version replaces older versions of this manual. The most recent version is available at [www.coulisse.nl](http://www.coulisse.nl) or contact your Coulisse contact person.

We invite you to send remarks and comments about this manual to [manuals@coulisse.nl](mailto:manuals@coulisse.nl).

coulisse

Coulisse B.V., Vonderweg 48, 7468 DC Enter, The Netherlands