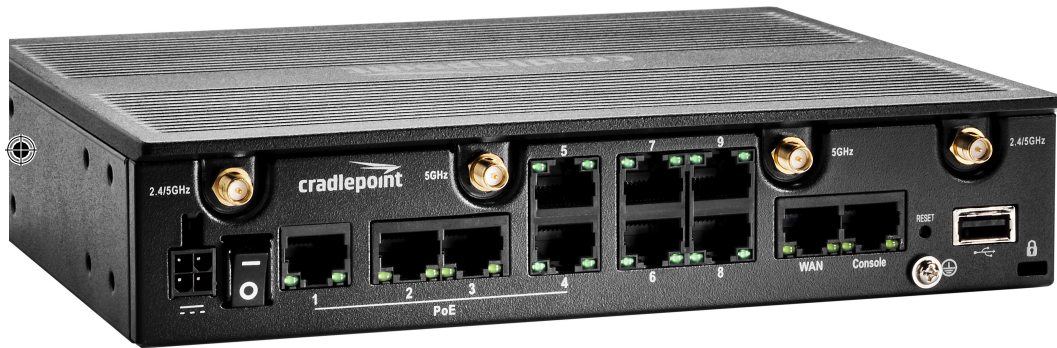




AER2200 Series

Cloud-Managed Networking for the Modern Branch



WHAT'S INCLUDED:



Ethernet Cable



Power Supply



WiFi & Cellular Antennas



Spare SIM / Modem Door Screws

THANK YOU FOR CHOOSING CRADLEPOINT

Cradlepoint is the leading provider of secure, cloud-managed LTE networking solutions for distributed enterprises. The AER2200 is a high-performance router designed for mission-critical modern branch deployments that require 24x7 connectivity.

Always Connected. Always Protected.

AER2200 Key Features:

- + Cloud-managed
- + Wave 2 dual-band, dual-concurrent WiFi (802.11 a/b/g/n/ac)
- + Dual-modem, multi-carrier support
- + Wireless WAN analytics
- + Ports:
 - 1 GigE WAN
 - 9 GigE LAN (switchable)
- + Industry-leading SD-WAN & 4G failover
- + Supports Unified Threat Management
- + Up to 4 ports of PoE
- + Built for PCI DSS Compliance

To view the full Quick Start Guide, go to:
cradlepoint.com/aer2200



GETTING STARTED

To make configuration changes to your router, open the AER2200 administration pages.

1. Connect to the router via Ethernet or WiFi. For WiFi, the default SSID is found on the product label on the bottom of the router.
2. Open a browser and type **"cp/"** or **"192.168.0.1"** and press return/enter.
3. When prompted for the Administrator Password, type the default eight character password found on the product label.
4. Upon login for the first time, you are automatically directed to the First Time Setup Wizard to configure Admin Password, Time Zone, WiFi Security, and WAN Failure Check. Default passwords must be changed to secure the router. The power/attention LED will show amber until the default Administrator and WiFi passwords have been changed.



For more setup instructions, see the AER2200 Quick Start Guide and User Manual at cradlepoint.com/aer2200.

Router Communication / Data Usage

The factory default configuration of the router is set to communicate with Cradlepoint and other resources at regular intervals to access the latest NetCloud OS and modem updates, clock synchronization (NTP), and NetCloud Manger membership. Such communication may result in data usage and applicable charges regardless of whether the router uses a wired or wireless Internet connection. To avoid such data usage and potential charges, consult the following Knowledge Base article:

<http://knowledgebase.cradlepoint.com/articles/support/router-communication-data-usage>

©Cradlepoint. All Rights Reserved.



Deploy and Manage the Intelligent Network with Cradlepoint NetCloud

Cradlepoint NetCloud is a network management and application platform that integrates cloud-based, software-defined networking with your Cradlepoint devices to improve productivity, increase reliability, and reduce costs.

It includes SD-WAN capabilities, like policy and orchestration, to enhance the security and scalability of your network and business operations.

Learn more & begin a free 30-day trial:

cradlepoint.com/netcloud

Sales & Support: +1 855-813-3385

Model Numbers:

AER2200-600M	S5A803A
AER2200NM	S5A804A
AER2250-600M	S5A808A
AER2250NM	S5A809A

Part Number: 170741-000

