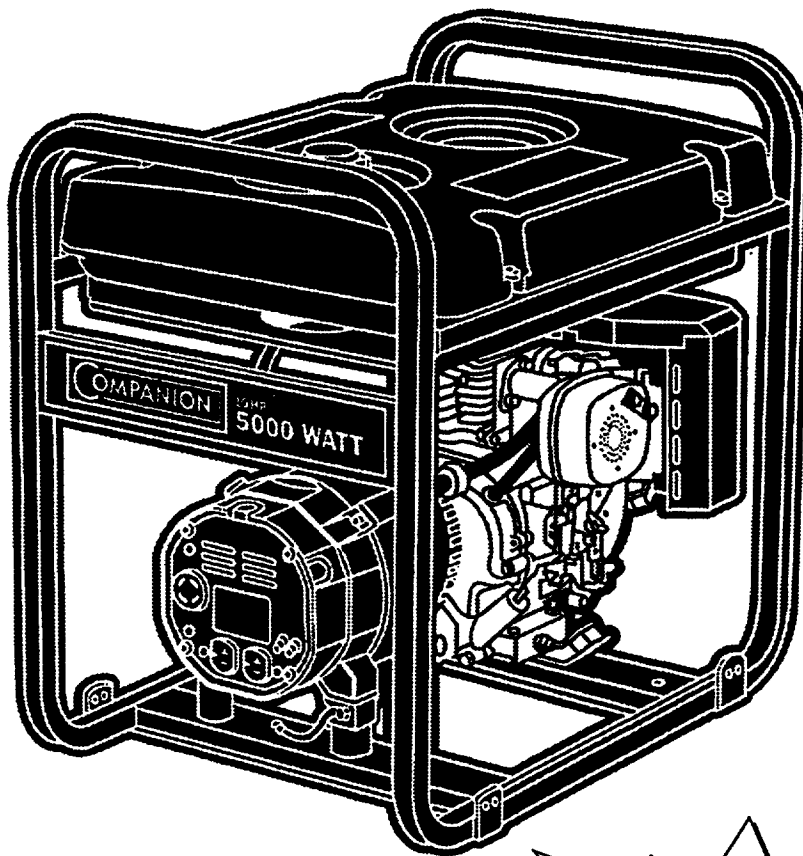


SEARS Owner's Manual

COMPANION

5000 Watt A-C Generator

Model No.
580.327112



CAUTION: Before using this product, read this manual and follow all Safety Rules and Operating Instructions.



HOURS: Mon. - Fri. 8 a.m. to 5 p.m. (CST)

SEARS, ROEBUCK and CO., Hoffman Estates, IL 60179 U.S.A.

Part No. B3051-Draft 0 (7/23/98)

SAFETY

ASSEMBLY

OPERATION

MAINTENANCE

PARTS LIST

TABLE OF CONTENTS

WARRANTY	2	TROUBLESHOOTING	13
SAFETY RULES	3	WIRING DIAGRAM	15
ASSEMBLY	4	REPLACEMENT PARTS	16-22
OPERATION	5-9	EMISSIONS WARRANTY	24-25
PRODUCT SPECIFICATIONS	10	HOW TO ORDER PARTS	BACK PAGE
MAINTENANCE	10-11		
STORAGE	12		

LIMITED ONE YEAR WARRANTY FOR COMPANION GENERATORS

SEARS warrants to the original purchaser that the alternator and engine for its portable generator will be free from defects in materials or workmanship for the items and period set forth below from the date of original purchase. This warranty is not transferable.

	CONSUMER*	COMMERCIAL*
Alternator	1 year	90 Days
Engine	1 year	90 Days

* NOTE: For the purpose of this warranty "Consumer Use" means personal residential household and emergency use by original purchaser, not to be used as a primary source of power. "Commercial Use" means all other uses, including rental, construction, commercial, and income producing purposes. Once a generator has experienced commercial use, it shall thereafter be considered a commercial use generator for the purpose of this warranty.

During said warranty period, SEARS will, at its option, repair or replace any part which, upon examination by SEARS, is found to be defective under normal use and service**. Starting batteries are not warranted by SEARS. All transportation costs under warranty, including return to the factory if necessary, are to be borne by the purchaser and prepaid by him. This warranty does not cover normal maintenance and service and does not apply to a generator set, alternator or engine, or parts which have been subjected to improper or unauthorized installation or alteration, misuse, negligence, accident, overloading, overspeeding, improper maintenance, repair or storage so as, in SEARS's judgment, to adversely affect its performance and reliability.

** NORMAL WEAR: As with all mechanical devices, engines need periodic parts service and replacement to perform well. This warranty will not cover repair when normal use has exhausted the life of a part or engine.

THERE IS NO OTHER EXPRESS WARRANTY. SEARS HEREBY DISCLAIMS ANY AND ALL IMPLIED WARRANTIES, INCLUDING BUT NOT LIMITED TO THOSE OF MERCHANTABILITY AND FITNESS FOR A PARTICULAR PURPOSE TO THE EXTENT PERMITTED BY LAW. THE DURATION OF ANY IMPLIED WARRANTIES WHICH CANNOT BE DISCLAIMED IS LIMITED TO THE TIME PERIOD AS SPECIFIED IN THE EXPRESS WARRANTY. LIABILITY FOR CONSEQUENTIAL, INCIDENTAL, OR SPECIAL DAMAGES UNDER ANY AND ALL WARRANTIES IS EXCLUDED. Some provinces do not allow limitations on how long an implied warranty lasts, or the exclusion or limitation of incidental or consequential damages, so the above limitations or exclusions may not apply to you. This warranty gives you specific legal rights and you may also have other rights, which vary from state to state.

For service, see your nearest SEARS authorized warranty service facility. Warranty service can be performed only by a SEARS authorized service facility. This warranty will not apply to service at any other facility. At the time of requesting warranty service, evidence of original purchase date must be presented.

SEARS, ROEBUCK and CO., D/817WA, Hoffman Estates, IL 60179 U.S.A.

SAFETY RULES



WARNING:



The engine exhaust from this product contains chemicals known to the State of California to cause cancer, birth defects, or other reproductive harm.



CAUTION: Always disconnect spark plug wire and place the wire where it cannot contact the spark plug. To prevent accidental starting when setting up, transporting, adjusting or making repairs to your Generator.



DANGER: This generator is designed for outdoor use only. Do not use this generator inside any building or enclosure including the generator compartment of a recreational vehicle (RV). Fire or an explosion may result. No user performed modifications, including venting of exhaust and/or cooling ventilation, will eliminate the danger. Also, allow at least two feet of clearance on all sides of the generator even while operating the unit outdoors.



CAUTION: Before using this product, read this manual and follow all Safety Rules and Operating Instructions.

- The generator produces dangerously high voltage that can cause extremely hazardous electrical shock. Avoid contact with bare wires, terminals, etc. Never permit any unqualified person to operate or service the generator.
- Never handle any kind of electrical cord or device while standing in water, while barefoot or while hands or feet are wet.
- The National Electric Code requires the frame and external electrically conductive parts of generator be properly connected to an approved earth ground. Local electrical codes may also require proper grounding of the generator. Consult with a local electrician for grounding requirements in your area.
- Use a ground fault circuit interrupter in any damp or highly conductive area (such as metal decking or steel work).
- Do not use any worn, bare, frayed or otherwise damaged electrical cord sets with the generator.
- Operate generator only on level surfaces and where it will not be exposed to excessive moisture, dirt, dust or corrosive vapors.

- Gasoline is highly **FLAMMABLE** and its vapors are **EXPLOSIVE**. Do not permit smoking, open flames, sparks or heat in the vicinity while handling gasoline. Avoid spilling gasoline on a hot engine. Comply with all laws regulating storage and handling of gasoline.
- Never add fuel while unit is running.
- Do not overfill the fuel tank. Always allow room for fuel expansion. If tank is overfilled, fuel can overflow onto a hot engine and cause **FIRE** or an **EXPLOSION**.
- Never store generator with fuel in tank where gasoline vapors might reach an open flame or spark or pilot light (as on a furnace, water heater or clothes dryer). **FIRE** or an **EXPLOSION** might result.
- Generator exhaust gases contain **DEADLY** carbon monoxide gas. Operate this equipment only in the open air where adequate ventilation is available.
- The engine-generator requires an adequate flow of cooling air for its continued proper operation. Never operate the unit inside any room or enclosure where the free flow of cooling air into and out of the unit might be obstructed. Allow at least 2 feet of clearance on all sides of generator, even while operating unit outdoors, or you could damage the unit.
- Never start, or stop, the engine-generator with electrical loads connected to receptacles with the connected devices turned **ON**. Start the engine and let it stabilize before connecting electrical loads. Disconnect all electrical loads before shutting down the generator.
- Do not insert any object through cooling slots of the engine-generator.
- Never operate generator (a) in rain; (b) in any enclosed compartment; (c) if connected electrical devices overheat; (d) if electrical output is lost; (e) if engine or generator sparks; (f) if flames or smoke are observed while unit is running; (g) if unit vibrates excessively.

Note: If you equip the engine with a spark arrestor muffler, the spark arrestor must be maintained in effective working order by the owner/operator.

In the State of California a spark arrestor is required by law (Section 4442 of the California Public Resources Code). Other states may have similar laws. Federal laws apply on federal lands. The spark arrestor part number for this unit is p/n 34479A.



LOOK FOR THIS SYMBOL TO POINT OUT IMPORTANT SAFETY PRECAUTIONS. IT MEANS "ATTENTION!!! BECOME ALERT!!! YOUR SAFETY IS INVOLVED."

ASSEMBLY

Your AC generator requires some assembly and is ready for use after it has been properly serviced with the recommended oil and fuel.

If you have any problems with the assembly of your generator, please call the generator helpline at 1-800-222-3136

Important: Any attempt to run the engine before it has been serviced with the recommended oil will result in an engine failure.

TO REMOVE THE GENERATOR FROM CARTON

- Set the carton on a rigid flat surface with "THIS SIDE UP" arrows pointing upward.

- Carefully open the top flaps of the shipping carton.
- Cut down corners at one end of carton from top to bottom and lay that side of carton down flat.
- Remove all packing material, carton fillers, etc.
- Remove the generator from the shipping carton.

CARTON CONTENTS

Check all contents. If any parts are missing or damaged, call the Generator Helpline at 1-800-222-3136.

- The main unit
- Owner's manual
- Engine oil

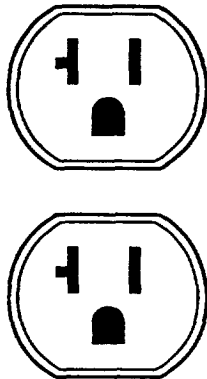
OPERATION

CORD SETS AND CONNECTOR PLUGS

120 Volt Duplex Receptacle

Use only high quality, well-insulated, extension cords with the generator's 120-volt duplex electrical receptacles.

Each receptacle is protected against overload by a push-to-reset circuit breaker. Use each receptacle to operate 120 volts, single phase 60 Hz, A C electrical loads requiring up to 2400 watts (2.4 kW) at 20 amps of current.



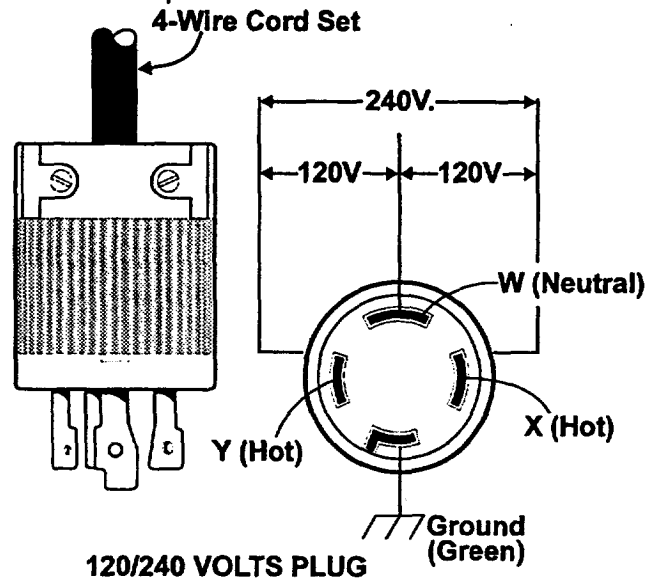
CAUTION! Although each receptacle is rated for 120 volts at 20 amps (2400 watts or 2.4 kW), the generator is rated for a total of 5000 watts. Powering loads that exceed the wattage capacity of the generator can damage it or cause serious injuries. The total of loads with 120 volts powered through these receptacles should not exceed 20 amps.

Check the ratings of all extension cords before you use them. Extension cord sets used should be rated 125 volts at 20 ac amps or greater for most electrical devices. Some devices, however, may not require this type of extension cord. Check the owner's manuals of those devices for the manufacturer's recommendations.

Keep extension cords as short as possible, preferably less than 15 feet long to prevent voltage drop and possible overheating of wires.

120/240 Volt, 20 AMP Receptacle

This receptacle is a NEMA L14-20R and is protected by a push-to-reset circuit breaker. A NEMA L14-20P mating connector plug is required to use this receptacle. Connect a suitable 4-wire cord set to the plug and to the desired load. The cord set should be rated for 250 volts at 30 amps.

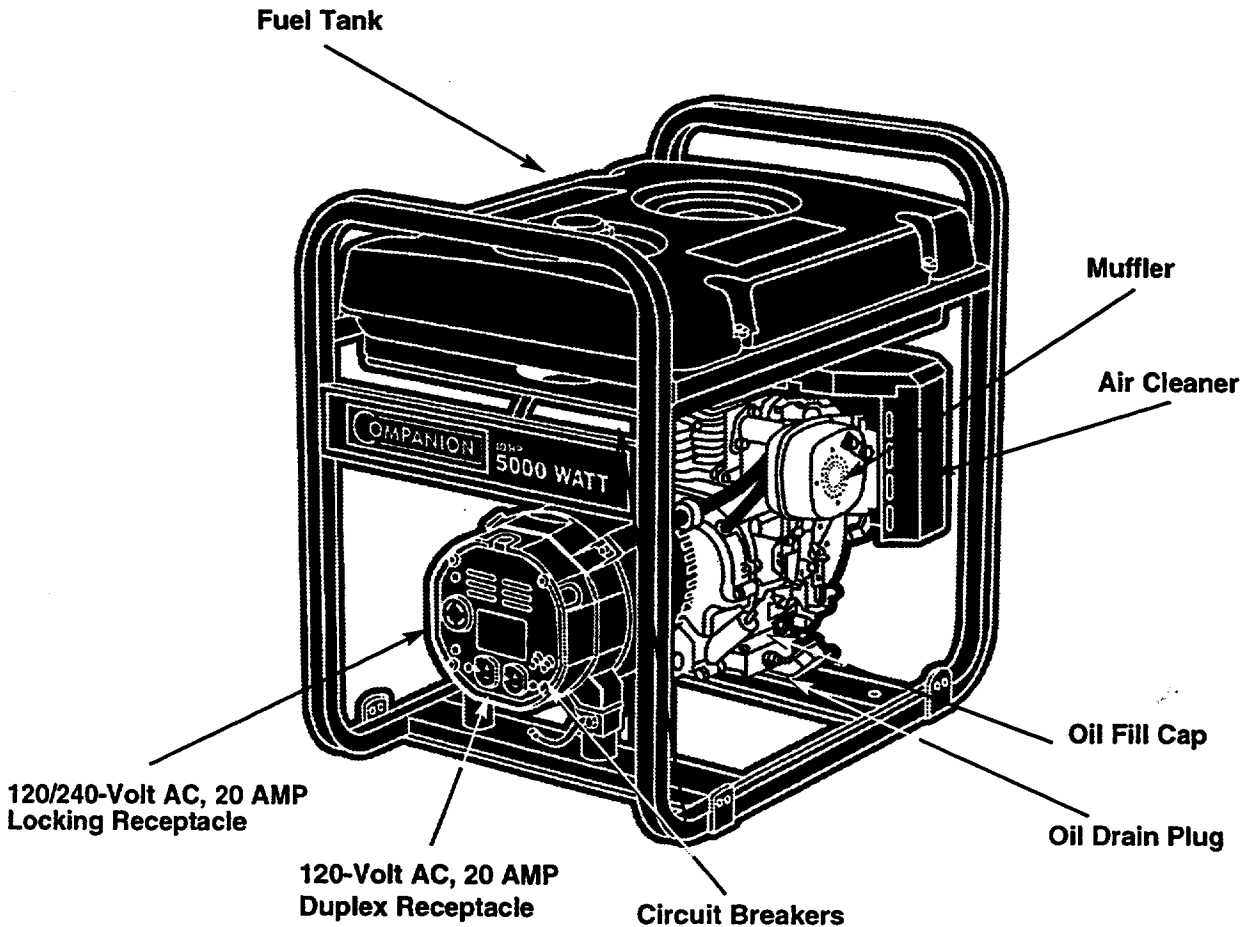


120/240 VOLTS PLUG

CAUTION! Although this receptacle is rated for 240 volts at 20 amps (4800 watts or 4.8 kW), the generator is rated for a total of 5000 watts (5.0 kW). Powering loads that exceed the wattage capacity of the generator can damage it or cause serious injuries. Loads with 240 volts powered through this receptacle should not exceed 20 amps.

KNOW YOUR GENERATOR

Read the owner's manual and safety rules before operating your generator. Compare the illustrations with your Generator to familiarize yourself with the locations of various controls and adjustments.



ASSEMBLY

OPERATION

120 Volt, 20 AMP, Duplex Receptacles — May be used to supply electrical power for the operation of 120 volts at 20 amps ac, single phase, 60 Hz, AC electrical lighting, appliance, tool and motor loads.

120/240 Volt, 20 AMP, Locking Receptacle — May be used to supply electrical power for the operation of 120 and/or 240 volts at 20 amps AC, single phase, 60 Hz, AC electrical lighting, appliance, tool and motor loads.

Air Cleaner — Filters intake air as it is drawn through the engine.

Choke Lever — Used when starting a cold engine.

Circuit Breakers (AC) — Each receptacle is provided with a circuit breaker to protect the generator against electrical overload. Breakers are "push to reset" type.

Fuel Tank — Tank holds 5 U.S. gallons of unleaded gasoline.

Muffler — Muffler lowers engine noise.

Oil Drain Plug — Drain engine oil here.

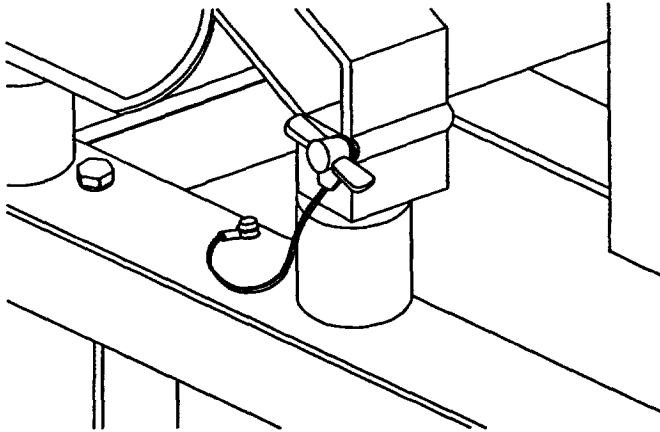
Oil Fill Cap — Fill engine with oil here.

HOW TO USE YOUR GENERATOR

If you have any problems operating your Generator, please call the Generator helpline at 1-800-222-3136.

GROUNDING THE GENERATOR.

The National Electrical Code requires that the frame and external electrically conductive parts of this generator be properly connected to an approved earth ground. Local electrical codes may also require proper grounding of the unit. For that purpose, a grounding lug is provided on the base of the cradle.



Generally, connecting a No. 12 AWG (American Wire Gauge) stranded copper wire to the grounding lug and to an earth-driven copper or brass grounding rod (electrode) provides adequate protection against electrical shock. However, local codes may vary widely. Consult with a local electrician for grounding requirements in your area.

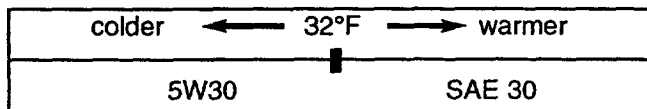
Proper grounding of generator will help prevent electrical shock in the event of a ground fault condition in the generator or in connected electrical devices. Proper grounding also helps dissipate static electricity, which often builds up in ungrounded devices.

BEFORE STARTING THE GENERATOR

To operate the engine you will need to do the following:

Add Engine Oil

NOTE: When adding oil to the engine crankcase in the future, use only high quality detergent oil rated with API service classification SF or SG or higher rated SAE 30 weight. Use no special additives. Select the oil's viscosity grade according to your expected operating temperature.



Although multi-viscosity oils (5W30, 10W30, etc.) improve starting in cold weather, these multi-viscosity oils will result in increased oil consumption when used above 32°F. Check your engine oil level more frequently to avoid possible damage from running low on oil.

- Place generator on a level surface.
- Clean area around oil fill and remove oil fill cap
- Wipe cap clean.
- Pour oil into oil fill opening until oil reaches the point of overflowing. Do not overfill!

Add Gasoline

- ⚠ **WARNING NEVER** fill fuel tank indoors. NEVER fill fuel tank when engine is running or hot. DO NOT light a cigarette or smoke when filling the fuel tank.
 - ⚠ **CAUTION:** Do not overfill the fuel tank. Always leave room for expansion.

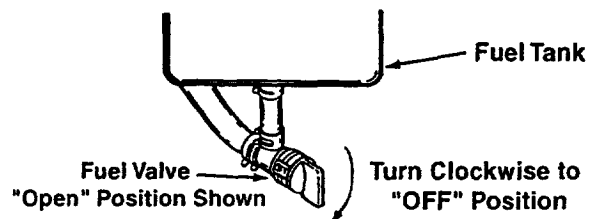
- Use regular **UNLEADED** gasoline with the Generator engine. Do not use premium gasoline. Do not mix oil with gasoline.
- Clean area around fuel fill cap, remove cap.
- Add unleaded regular gasoline, slowly to fuel tank. Be careful not to overfill. Allow about 1/4" of tank space for fuel expansion.
- Install fuel cap and wipe up any spilled gasoline.

IMPORTANT: It is important to prevent gum deposits from forming in essential fuel system parts such as the carburetor, fuel filter, fuel hose or tank during storage. Also, experience indicates that alcohol-blended fuels (called gasohol, ethanol or methanol) can attract moisture which leads to separation and formation of acids during storage. Acidic gas can damage the fuel system of an engine while in storage. To avoid engine problems, the fuel system should be emptied before storage of 30 days or longer. See "Storage" on page 12. Never use engine or carburetor cleaner products in the fuel tank or permanent damage may occur.

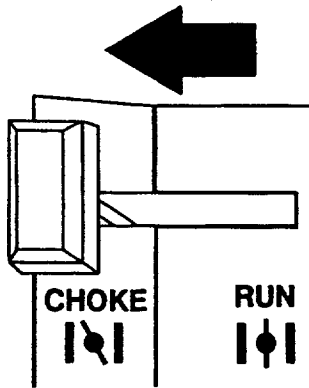
TO START THE ENGINE

- ⚠ **WARNING:** Never start or stop engine with electrical devices plugged into the panel receptacles and turned on.

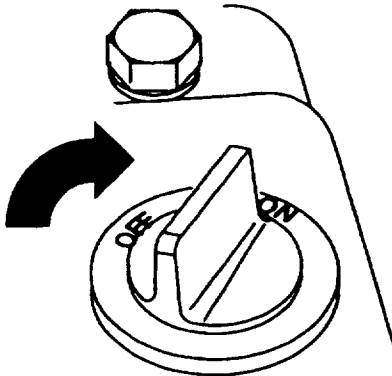
- Unplug all electrical loads from generator receptacles before starting the engine.
- Make sure the unit is in a level position.
- Open the fuel shut-off valve.



- Move the choke lever to the “Choke” position.



- Set the engine control switch to the On position.



- **Manual Start:** Grasp starter grip and pull slowly until you feel some resistance. Then pull cord out with rapid full arm stroke. Let rope return slowly. Do not let rope “snap back” against starter.
- When engine starts, move choke lever to “Run” position.

Note: If engine fails to start after 3 pulls, move the choke lever to “RUN” and pull starter rope again.

Note: If the engine fails to start after three (3) pulls, check for proper oil level in crankcase. Unit is equipped with a low oil shutdown system.

Note: If engine fires, but does not continue to run, move choke lever to “Choke” and repeat starting instructions.



CAUTION! Never run engine indoors or in enclosed poorly ventilated areas. Engine exhaust contains carbon monoxide, an odorless and deadly gas.



WARNING! Temperature of muffler and nearby areas may exceed 150°F (65°C). Avoid these areas.

STOPPING THE ENGINE

- Unplug all electrical loads from generator panel receptacles. **Never** start or stop engine with electrical devices plugged in and turned on.
- Let engine run at no-load for several minutes to stabilize the internal temperatures of engine and generator.
- Move engine control switch to “Off” Position.
- Close the fuel shut-off valve

CONNECTING ELECTRICAL LOADS

- Let engine stabilize and warm up for a few minutes after starting.
- Plug in and turn on the desired 120 and/or 240 volts, single phase, 60 Hertz, A C electrical loads.
- **Do not** connect 240 volts to the 120 volt duplex receptacles
- **Do not** connect 3-phase loads to the receptacles.
- **Do not** connect any 50Hz loads to the receptacles.
- **DO NOT OVERLOAD THE GENERATOR.** Add up the rated watts (or amps) of all loads to be connected at one time. This total should not be greater than the rated wattage/amperage capacity of the generator. See Don't Overload the Generator on Page 9.

LOW OIL LEVEL SHUTDOWN SYSTEM

Sensing Low Pressure

If the system senses a low oil level during operation, the engine shuts down. If the engine shuts down by itself and it has enough gasoline in the fuel tank, check oil level.

Restarting

If you attempt to restart the engine after such a shutdown and have not corrected the engine oil level, the engine will not start. Check the oil and refill according to the instructions on page 7.

DON'T OVERLOAD THE GENERATOR

Overloading a generator in excess of its rated wattage capacity can result in damage to the generator and to connected electrical devices. Observe the following, to prevent overloading the unit:

- Add up the total wattage of all electrical devices to be connected at one time. This total should NOT be greater than the generator's wattage capacity.
- The rated wattage of lights can be taken from light bulbs. The rated wattage of tools, appliances and motors can usually be found on a data plate or decal affixed to the device.
- If the appliance, tool or motor does not give wattage, multiply volts times ampere rating to determine watts (volts x amps = watts).

- Some electric motors, such as induction types, require about two and a half times more watts of power for starting than for running. This surge of power lasts only a few seconds when starting such motors. Make sure you allow for this high starting wattage when selecting electrical devices to connect to your generator. First, figure the watts needed to start the largest motor. Add to that figure the running watts of all other connected loads.

The Wattage Reference Guide below is provided to assist you in determining how many items your generator can operate at one time.

WATTAGE REFERENCE GUIDE

Electrical Device	Running Watts	Electrical Device	Running Watts
*Air Conditioner (12,000 Btu).....	1700	Impact Wrench.....	500
Battery Charger (20 amp).....	500	*Jet Pump.....	800
Belt Sander (3").....	1000	Lawn Mower.....	1200
Chain Saw.....	1200	Light Bulb.....	100
Circular Saw (6-12").....	800 to 1000	Microwave Oven.....	700
Coffee Maker.....	1000	*Milk Cooler.....	1100
*Compressor (1 HP).....	2000	Oil Burner on Furnace.....	300
*Compressor (3/4 HP).....	1800	Oil Fired Space Heater (140,000 Btu).....	400
*Compressor (1/2 HP).....	1400	Oil Fired Space Heater (85,000 Btu).....	225
Curling Iron.....	700	Oil Fired Space Heater (30,000 Btu).....	150
*Freezer.....	500	*Paint Sprayer, Airless (1/3 HP).....	600
Disc Sander (9").....	1200	Paint Sprayer, Airless (handheld).....	150
Edge Trimmer.....	500	Radio.....	50 to 200
Electric Nail Gun.....	1200	*Refrigerator.....	600
Electric Range (one element).....	1500	Slow Cooker.....	200
Electric Skillet.....	1250	*Submersible Pump (1-1/2 HP).....	2800
*Furnace Fan (1/3 HP).....	1200	*Submersible Pump (1 HP).....	2000
Hair Dryer.....	1200	*Submersible Pump (1/2 HP).....	1500
Hand Drill (1").....	1100	Sump Pump.....	600
Hand Drill (1/2").....	750 to 1000	*Table Saw (10").....	1750 to 2000
Hand Drill (3/8").....	500	Television.....	200 to 500
Hand Drill (1/4").....	250	Weed Trimmer.....	500
Hedge Trimmer.....	450		

* Allow 2-1/2 times the listed watts for starting these devices.

MAINTENANCE

Maintenance Schedule

Follow the hourly or calendar intervals, whichever occurs first.

More frequent service is required when operating in adverse conditions noted below.

Maintenance Operation	Every 5 Hours or Daily	25 Hours or Every Season	50 Hours or Every Season	100 Hours or Every Season
Check oil level	X			
Change oil ‡		X*		
Service air pre-cleaner		X**		
Service air cleaner cartridge		X**		
Clean cooling system				X
Replace spark plug				X
Prepare unit for storage	Prepare unit for storage if it is to remain idle for more than 30 days			

‡ Change oil after first 5 hours of operation then after every 25 hours or every season.

* Change oil sooner when operating under heavy load or in high temperatures.

** Clean more often under dirty or dusty conditions.

PRODUCT SPECIFICATIONS

Generator Specifications

Rated Maximum Power 5000 Watts (5.0 kW)
 Surge Power 6250 Watts (6.25 kW)
 Rated Voltage 120/240 Volts AC
 Rated Maximum Current
 at 240 volts 20.8 AC Amperes
 Rated Maximum Current
 at 120 Volts 41.7 AC Amperes
 Rated Frequency 60 Hz at 3600 rpm
 Phase Single Phase

Engine Specifications

Rated Horsepower 10 at 3600 rpm
 Spark Plug
 Type: Champion RC14YC or
 Equivalent
 Set Gap To: 0.030inch (0.76mm)
 Gasoline Capacity 5 U.S. gallons
 Oil
 Summer SAE 30 (10W-30)
 Winter SAE 5W-20 or 5W-30

GENERAL RECOMMENDATIONS

The warranty of the Generator does not cover items that have been subjected to operator abuse or negligence. To receive full value from the warranty, operator must maintain Generator as instructed in this manual.

Some adjustments will need to be made periodically to properly maintain your Generator.

All adjustments in the Service and Adjustments section of this manual should be made at least once each season. Follow the requirements in the "Maintenance Schedule" chart above.


Note: Once a year you should clean or replace the spark plug and replace the air filter. A new spark plug and clean air filter assure proper fuel-air mixture and help your engine run better and last longer.

GENERATOR MAINTENANCE

Generator maintenance consists of keeping the unit clean and dry. Operate and store the unit in a clean dry environment where it will not be exposed to excessive dust, dirt, moisture or any corrosive vapors. Cooling air slots in the generator must not become clogged with snow, leaves, or any other foreign material.

Check the cleanliness of the generator frequently and clean when dust, dirt, oil, moisture or other foreign substances are visible on its exterior surface.

Note: We **DO NOT** recommend using a garden hose to clean generator. Water can enter the engine fuel system and cause problems. In addition, if water enters the generator through cooling air slots, some of the water will be retained in voids and cracks of the rotor and stator winding insulation. Water and dirt buildup on the generator internal windings will eventually decrease the insulation resistance of these windings.

 **CAUTION: Never Insert any object or tool through the air cooling slots, even if the engine is not running.**

MAINTENANCE

To clean the Generator:

- Use a damp cloth to wipe exterior surfaces clean.
- A soft, bristle brush may be used to loosen caked on dirt, oil, etc.
- A vacuum cleaner may be used to pick up loose dirt and debris.
- Low pressure air (not to exceed 25 psi) may be used to blow away dirt. Inspect cooling air slots and openings on the generator. These openings must be kept clean and unobstructed.

ENGINE MAINTENANCE



DANGER: When working on the generator **ALWAYS** disconnect spark plug wire from spark plug and keep it away from spark plug.

Checking Oil Level

Oil level should be checked prior to each use or at least every 5 hours of operation. Keep oil level maintained.

Changing Engine Oil

Change oil after first 5 hours of operation. Change oil every 25 hours thereafter. If you are using your generator under extremely dirty or dusty conditions, or in extremely hot weather, change oil more often.

Change oil while engine is still warm from running, as follows:

- Clean area around oil drain plug.
- Remove oil drain plug and oil fill plug and drain oil completely into a suitable container.
- When oil has completely drained, install oil drain plug and tighten securely.
- Fill oil sump with recommended oil. (See "Before Starting the Engine" on page 7 for oil recommendations)
- Install the oil fill plug and tighten securely.
- Wipe up any spilled oil.

CLEAN/REPLACE SPARK PLUG

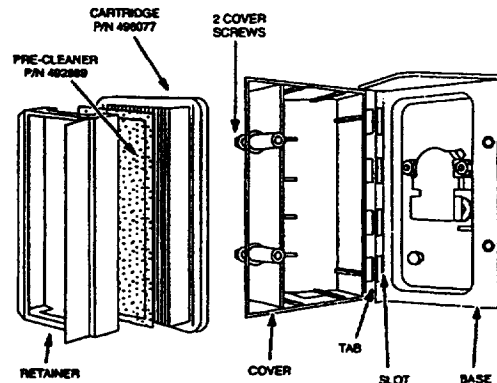
Change the spark plug every 100 hours of operation or once each year, whichever comes first. This will help your engine to start easier and run better. See "Specifications" for proper spark plug.

- Clean area around spark plug.
- Remove and inspect spark plug.
- Replace spark plug if electrodes are pitted, burned or porcelain is cracked.
- Check electrode gap with wire feeler gauge and set spark plug gap to 0.030 inch (0.76mm) if necessary.

SERVICE AIR CLEANER

Your engine will not run properly and may be damaged if you run it using a dirty air cleaner.

Clean or replace the foam pre-cleaner every 25 hours of operation. Service cartridge every 100 hours of operation or once a year, whichever comes first. Clean or replace more often if operating under dusty or dirty conditions. Replacements are available at your local Sears Authorized Service Center.



To service foam pre-cleaner:

- The cover is attached to the air cleaner housing by two screws.
- Carefully remove air cleaner assembly from inside of cover and disassemble.
- Wash in liquid detergent and water.
- Squeeze (don't twist) pre-cleaner in a clean, dry cloth.
- Saturate pre-cleaner in engine oil. Squeeze in a clean absorbent cloth to remove all excess oil.
- Replace pre-cleaner if very dirty or damaged.
- **To service cartridge**, clean by tapping gently on a flat surface. Replace if very dirty or damaged. **Do not oil cartridge.**

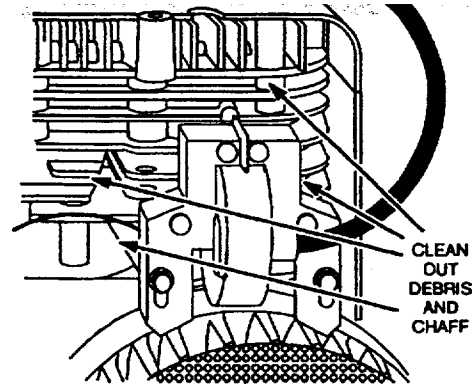
Note: Do not use petroleum solvents such as kerosene, or pressurized air to clean cartridge.

- Reassemble retainer on pre-cleaner and cartridge (screen side of pre-cleaner toward cartridge pleats). Install this assembly in cover.
- Insert tabs on cover into slots in base. Tighten cover screws securely.

KEEP ENGINE AND PARTS CLEAN

With a brush or cloth, remove debris from debris guard or rotating screen daily or more often if needed to prevent engine damage caused by overheating. Do not clean with a forceful spray of water because water could contaminate the fuel system.

Keep governor linkage, springs, and controls free of debris. Debris or chaff may clog the air cooling system, especially after prolonged operation. Remove blower housing and clean area shown to prevent overheating and engine damage.



STORAGE

GENERAL

The generator should be started at least once every seven days and allowed to run at least 30 minutes. If this cannot be done and you must store the unit for more than 30 days, use the following information as a guide to prepare it for storage.

LONG TERM STORAGE INSTRUCTIONS



WARNING: NEVER store engine with fuel in tank indoors or in enclosed, poorly ventilated areas where fumes may reach an open flame, spark or pilot light as on a furnace, water heater, clothes dryer or other gas appliance.

It is important to prevent gum deposits from forming in essential fuel system parts such as the carburetor, fuel filter, fuel hose or tank during storage. Also, experience indicates that alcohol-blended fuels (called gasohol, ethanol or methanol) can attract moisture which leads to separation and formation of acids during storage. Acidic gas can damage the fuel system of an engine while in storage.

To avoid engine problems, the fuel system should be emptied before storage of 30 days or longer. Follow these instructions:

PROTECT FUEL SYSTEM



WARNING: Drain fuel into approved container outdoors, away from open flame. Be sure engine is cool. Do not smoke.

- Remove all gasoline from the fuel tank to prevent gum deposits from forming on these parts and causing possible malfunction of engine.

- Run engine until engine stops from lack of fuel.

CHANGE OIL

While engine is still warm, drain oil from crankcase. Refill with recommended grade.

OIL CYLINDER BORE

- Remove spark plug and pour about 1/2 ounce (15ml) of engine oil into the cylinder. Cover spark plug hole with rag. Crank slowly to distribute oil.



CAUTION! Avoid spray from spark plug hole when cranking engine slowly.

- Install spark plug. Do not connect spark plug wire.

GENERATOR:

- Clean the generator as outlined on Page 10 ("To Clean the Generator").
- Check that cooling air slots and openings on generator are open and unobstructed.

OTHER STORAGE TIPS:

- Do not store gasoline from one season to another.
- Replace your gasoline can if your can starts to rust. Rust and/or dirt in your gasoline will cause problems.
- If possible, store your unit indoors and cover it to give protection from dust and dirt. **BE SURE TO EMPTY THE FUEL TANK.**
- Cover your unit with a suitable protective cover that does not retain moisture.
- Store generator in clean, dry area.



DANGER: NEVER cover your Generator while engine and exhaust area are warm.

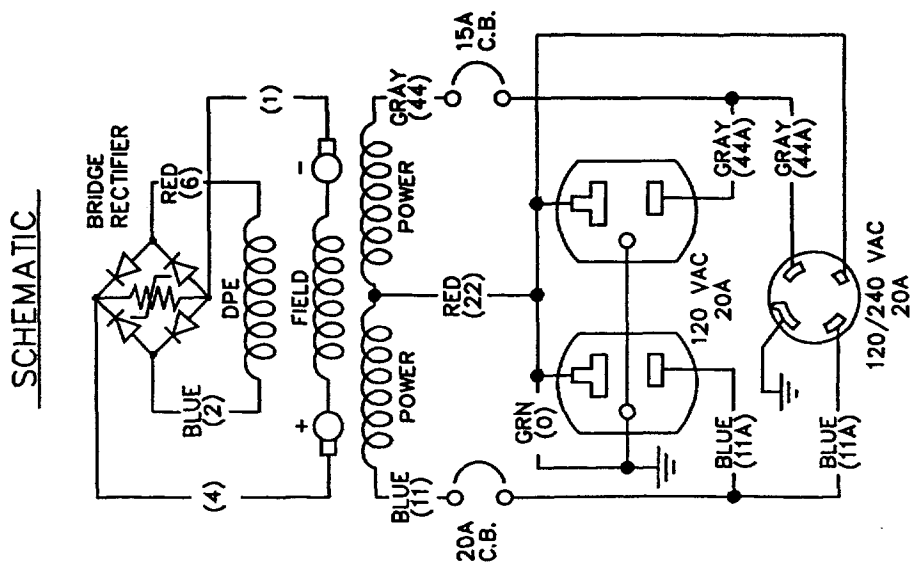
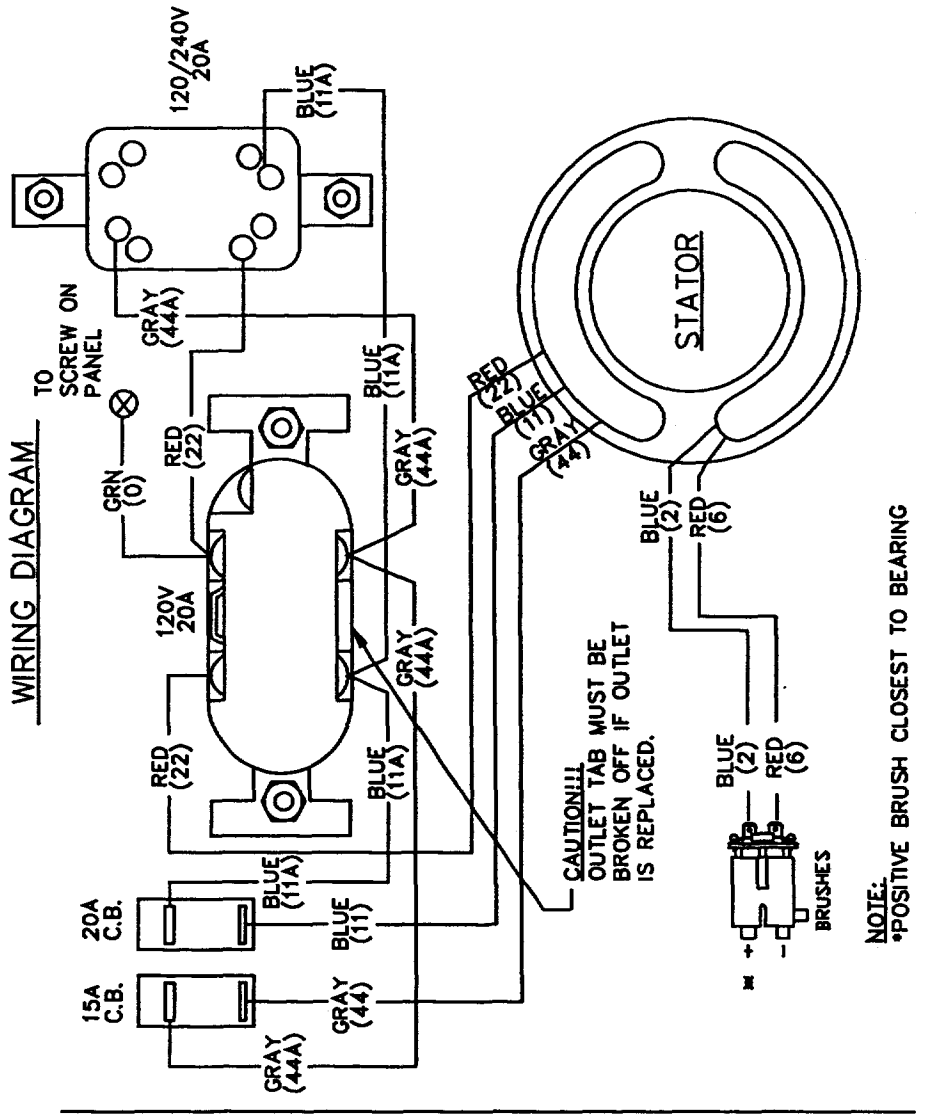
TROUBLESHOOTING

PROBLEM	CAUSE	CORRECTION
Engine is running, but no AC output is available.	<ol style="list-style-type: none"> 1. One of the circuit breakers is open. 2. Fault in generator. 3. Poor connection or defective cord set. 4. Connected device is bad. 	<ol style="list-style-type: none"> 1. Reset circuit breaker. 2. Contact Sears Service Facility. 3. Check and repair. 4. Connect another device that is in good condition.
Engine runs good at no-load but "bogs down" when loads are connected	<ol style="list-style-type: none"> 1. Short circuit in a connected load. 2. Engine speed is too slow. 3. Generator is overloaded. 4. Shorted generator circuit. 	<ol style="list-style-type: none"> 1. Disconnect shorted electrical load. 2. Contact Sears Service Facility. 3. See "Don't Overload the Generator" 4. Contact Sears Service Facility.
Engine will not start; or starts and runs rough.	<ol style="list-style-type: none"> 1. Run/Stop Switch set to STOP. 2. Dirty air cleaner 3. Out of gasoline. 4. Stale gasoline. 5. Spark plug wire not connected to spark plug. 6. Bad spark plug. 7. Water in gasoline. 8. Overchoking. 9. Low oil level 10. Excessively rich fuel mixture. 11. Intake valve stuck open or closed. 12. Engine has lost compression. 	<ol style="list-style-type: none"> 1. Set switch to RUN. 2. Clean or replace air cleaner. 3. Fill fuel tank. 4. Drain gas tank; fill with fresh fuel. 5. Connect wire to spark plug. 6. Replace spark plug. 7. Drain gas tank; fill with fresh fuel. 8. Open choke fully and crank engine. 9. Fill crankcase to proper level. 10. Contact Sears Service Facility. 11. Contact Sears Service Facility. 12. Contact Sears Service Facility.
Engine shuts down during operation	<ol style="list-style-type: none"> 1. Out of gasoline. 2. Low oil level. 	<ol style="list-style-type: none"> 1. Fill fuel tank. 2. Fill crankcase to proper level.
Engine lacks power.	<ol style="list-style-type: none"> 1. Load is too high. 2. Dirty air filter. 	<ol style="list-style-type: none"> 1. See "Don't Overload the Generator" 2. Replace air filter.
Engine "hunts" or falters.	<ol style="list-style-type: none"> 1. Choke is opened too soon. 2. Carburetor is running too rich or too lean. 	<ol style="list-style-type: none"> 1. Move choke to halfway position until engine runs smoothly. 2. Contact Sears Service Facility.

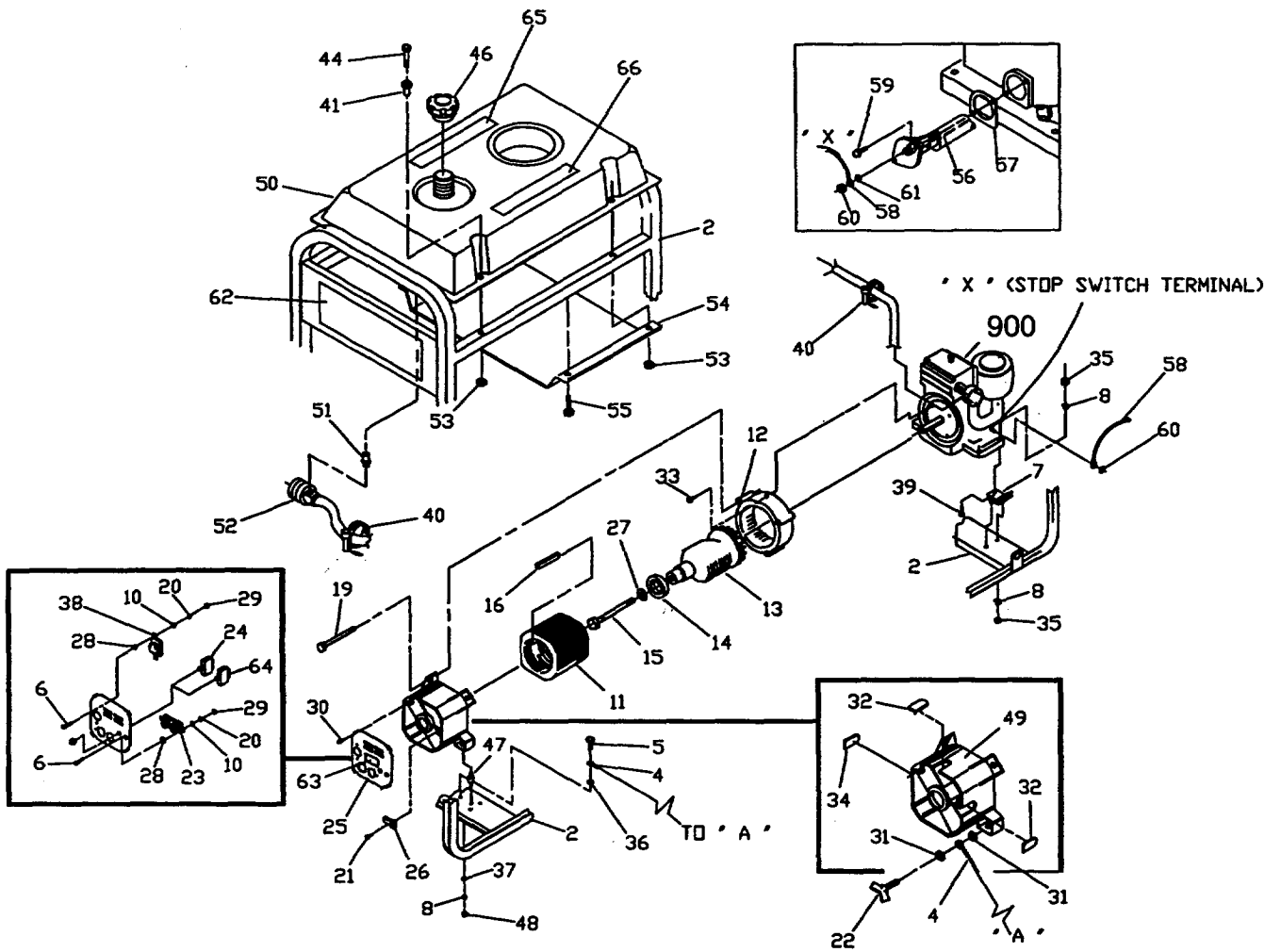
PARTS

CRAFTSMAN 5000 Watt AC Generator 580.327112

Wiring Diagram



CRAFTSMAN 5000 Watt AC Generator 580.327112
Main Unit — Exploded View



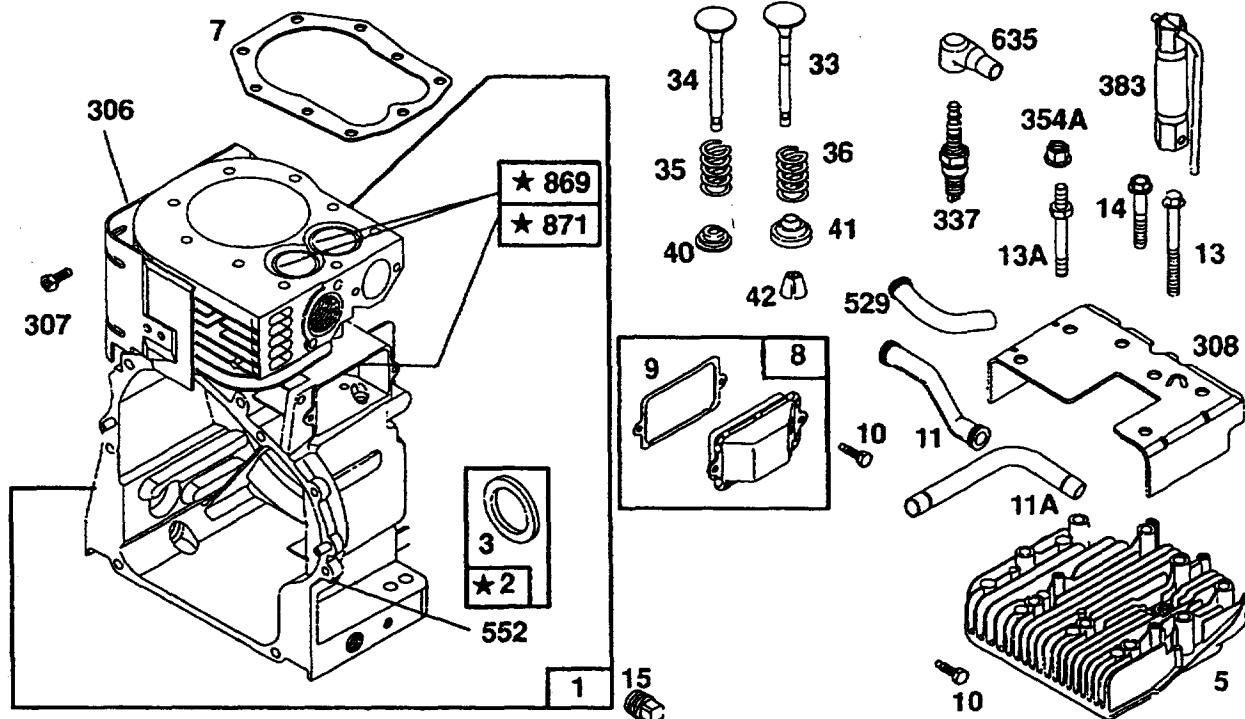
CRAFTSMAN 5000 Watt AC Generator 580.327112

Main Unit — Parts List

<u>ITEM</u>	<u>PART NO.</u>	<u>QTY.</u>	<u>DESCRIPTION</u>	<u>ITEM</u>	<u>PART NO.</u>	<u>QTY.</u>	<u>DESCRIPTION</u>
900	91011	1	ENGINE, Briggs & Stratton 10 Hp	37	22145	2	WASHER, M8 Flat
2	91020B	1	ASSEMBLY, Cradle	38	68867	1	OUTLET, 120/240 Volt - Twistlock
4	143-53621	1	WIRE, Ground	39	76222	2	SCREW, Pan Head-M8 x 40mm
5	86292	1	CAPSCREW, #10 Self Driller	40	48031C	2	CLAMP, 1/4" Hose
6	75475	4	SCREW, M4-0.7 x 10mm	41	83465	4	GROMMET, Mounting Tank
7	70642	2	MOUNT, Vibration	44	78831B	4	CAPSCW., Hx Hd.-M6-1.0 x 60mm
8	22129	8	WASHER, M8 Lock	46	90878	1	CAP, Fuel Tank
10	38150	4	WASHER, No. 8 Flat	47	82857	2	MOUNT, Vibration
11	93585J	1	ASSEMBLY, Stator	48	25244	2	NUT, 5/16" - 18 Hex
12	66365G	1	HOUSING, Engine Adapter	49	66825C	1	BEARING, Rear Carrier
13	91844	1	ASSEMBLY, Rotor	50	77374	1	TANK, Fuel
14	65791	1	BEARING, Ball	51	78299	1	BUSHING, Plastic Tank
15	47480	1	BOLT, Rotor 5/16"-24 x 7"	52	80270	1	VALVE, Plastic Tank
16	81917	1	PIN, M4 x 10 Roll	53	77395	4	NUT, M6 Hex Lock
19	86308C	4	BOLT, Stator M6-1.00 x 130mm	54	78951	1	SHIELD, Heat
20	22264	4	WASHER, No. 8 Lock	55	56892	2	SCREW, Crimpite #10-24 x 3/8"
21	66849	2	SCREW, M5- .80 x 16mm Taptite	56	88977	1	SWITCH, Low Oil Shut-Down (LOS)
22	86494	1	SCREW, M6 x 16mm Wing	57	91841	1	GASKET
23	68759	1	RECEPTACLE, 120Volts AC, 20AMP	58	91842	1	WIRE, Low Oil Shut-Down
24	94396B	1	BREAKER, Circuit - 20AMP	59	32713	2	SCREW, No. 10-32 x 3/4" Taptite
25	95600	1	PANEL, Control Sheet Metal	60	22471	2	NUT, No. 8-32
26	91825	1	ASSEM, Brush & Bridge Rectifier	61	23365	1	WASHER, No. 8 Shakeproof
27	67451	1	WASHER, Flat (Special)	62	B3050	1	DECAL, Panel Cradle
28	23365	4	WASHER, No.8 Shakeproof	63	98247	1	DECAL, Control Panel
29	51715	4	NUT, M4-0.7 Hex	64	94396A	1	BREAKER, Circuit 15 AMP
30	74908	4	SCREW, M5- 0.80 x 10mm	65	92982	1	DECAL, Danger
31	26850	2	WASHER, Shakeproof - 1/4"	66	93826	1	DECAL, Operating Instructions
32	84242	2	GROMMET, Rear Bearing Carrier	Parts Not Illustrated			
33	86307	4	CAPSCREW, Hx Hd.- 5/16" x 3/4"	B3051	1	Owner's Manual	
34	67022	1	GROMMET, Bearing Carrier	B3061	2	20oz. Engine Oil	
35	52858	6	NUT, M8-1.25 Hex	Optional Accessories Not Illustrated			
36	22769	1	WASHER, No. 10 Shakeproof	09-32684		Wheel Kit	
				09-32688		Cord Wrap Kit	
				09-32686		120/240V 20A Plug	

CRAFTSMAN 5000 Watt AC Generator 580.327112

Briggs and Stratton 4 Cycle Engine 19G412-1129-E1



1058 OWNER'S MANUAL

1019 LABEL KIT

★ REQUIRES SPECIAL TOOLS TO INSTALL.
SEE REPAIR INSTRUCTION MANUAL.

REF. NO.	PART NO.	DESCRIPTION	REF. NO.	PART NO.	DESCRIPTION	REF. NO.	PART NO.	DESCRIPTION
1	495631	Cylinder Assembly (Includes OIL GARD® Cover)	13	94565	Screw-Cylinder Head (3-9/16" Long)	337	496018	Plug-Spark
2	495657	Bushing	13A	94733	Stud-Cylinder Head Used in Position # 5 & #6.	354A	94726	Nut-Hex.
3	★391086	Seal-Oil	14	93723	Screw-Cylinder Head (3" Long)	383	89838	Wrench-Spark Plug
5	214347	Head-Cylinder	15	94239	Plug-Oil Drain	529	281367	Grommet (Used Before Code Date 94111100).
7	★272163	Gasket-Cylinder Hd.	33	390419	Valve-Exhaust (Includes Ref. 42)	552	491986	Bushing-Gov. Crank
8	495736	Breather Assembly (Used After Code Date 95010100).	34	261055	Valve-Intake	635	66538	Boot-Spark Plug
			35	65906	Spring-Valve (Intake)	869	211661	Seat-Valve
			36	26828	Spring-Valve (Exhaust)	871	261961	Bushing-Guide (Exhaust)
			40	221596	Retainer-Valve	Note		
9	★27803	Gasket-Breather	41	292260	Retainer-Valve	231218		Bushing-Guide (Intake)
10	94621	Screw-Sem	42	494553	Keeper-Valve	1019	491181	Label Kit
11	280225	Tube-Breather (Used After Code Date 95010100).	306	496797	Shield-Cylinder	1058	272848	Owner's Manual
11A	231900	Tube-Breather (Used Before Code Date 94111100).	307	94386	Screw-Self Tapping			
			308	225055	Cover-Cylinder Head			

- ★ Included in Gasket Set-Part No. 497070.
- Included in Carburetor Kit-See Ref. No. 121.
- ◆ Included in Carburetor Gasket Set-Part No. 497069.

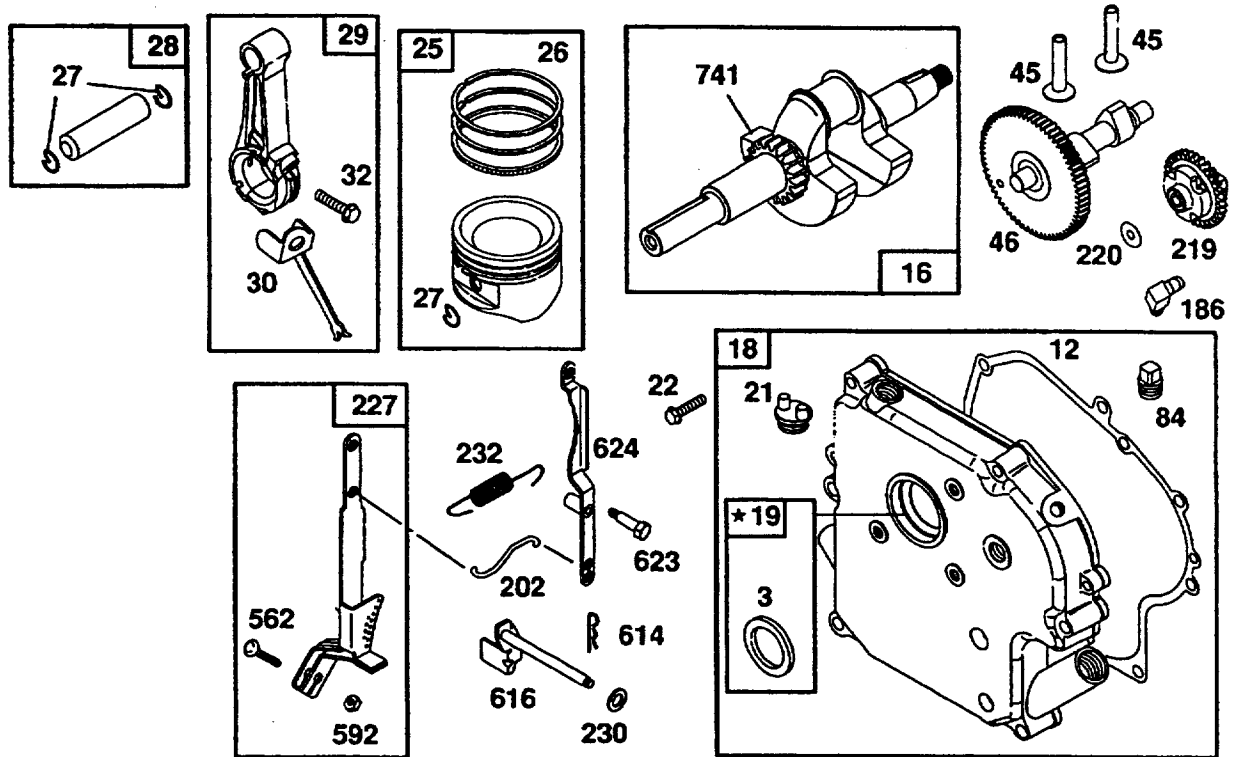
0432-2

Assemblies include all parts shown in frames.

25

CRAFTSMAN 5000 Watt AC Generator 580.327112

Briggs and Stratton 4 Cycle Engine 19G412-1129-E1



REF. NO.	PART NO.	DESCRIPTION	REF. NO.	PART NO.	DESCRIPTION	REF. NO.	PART NO.	DESCRIPTION
3	*391086	Seal-Oil	25	391673	Piston Assy. (Standard)			
12	*271701	Gasket-Crankcase (.015" Thick)		391674	Piston Assy. (.010" O.S.)			
	*27876	Gasket-Crankcase (.005" Thick)		391675	Piston Assy. (.020" O.S.)	30	222113	Dipper-Connecting Rod
	*27877	Gasket-Crankcase (.009" Thick)		391676	Piston Assy. (.030" O.S.)	32	94670	Screw-Conn. Rod
16	495832	Crankshaft	26	393881	Ring Set (Standard)	45	260933	Tappet-Valve
		Note		299743	Ring Set (Std., Chrome)	46	211689	Gear-Cam
		For Timing Gear Retaining Device.		393882	Ring Set (.010" O.S.)	84	91488	Plug-Pipe
		Order Part No. 94388 Key.		393883	Ring Set (.020" O.S.)	186	67218	Connector-Fuel Line
		495790 Crankshaft Used on Type No(s) 0068, 0129, 0131, 0169.		393884	Ring Set (.030" O.S.)	202	263049	Link
18	496984	Cover-Crankcase	27	68546	Lock-Piston Pin	219	497037	Gear-Governor
19	295964	Bushing	28	295840	Pin-Piston (Standard)	220	221551	Washer-Thrust
21	66768	Plug-Oil Fill		295841	Pin-Piston (.005" O.S.)	227	496254	Lever-Governor
22	93585	Screw-Sem	29	390401	Rod-Connecting	230	94742	Washer-Thrust
						232	263020	Spring-Link
						562	92613	Bolt-Carriage
						592	231082	Nut-Hex.
						614	93306	Pin-Cotter
						616	496818	Crank-Governor
						623	231520	Screw-Shoulder
						624	497207	Lever-Linkage
						741	262479	Gear-Timing

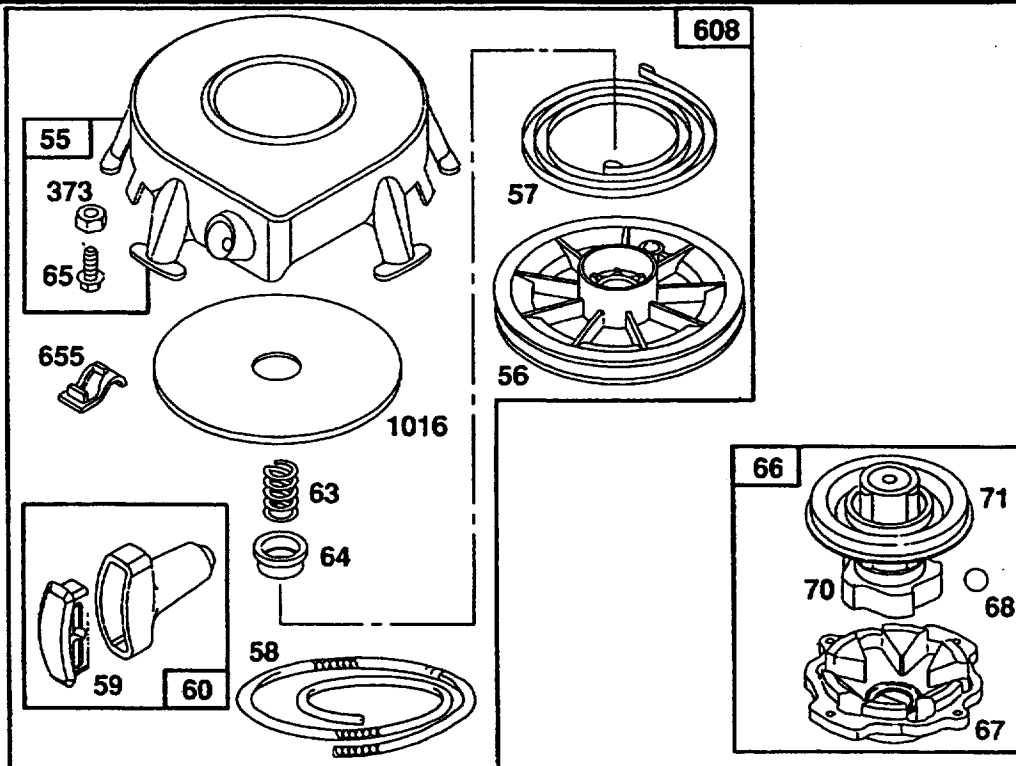
- * Included in Gasket Set-Part No. 497070.
- Included in Carburetor Kit-See Ref. No. 121.
- Included in Carburetor Gasket Set-Part No. 497069.

0432-3

Assemblies include all parts shown in frames.

CRAFTSMAN 5000 Watt AC Generator 580.327112

Briggs and Stratton 4 Cycle Engine 19G412-1129-E1



REF. NO.	PART NO.	DESCRIPTION	REF. NO.	PART NO.	DESCRIPTION	REF. NO.	PART NO.	DESCRIPTION
55	393576	Housing-Rewind Starter	63	260414	Spring-Ratchet	70	298799	Ratchet-Rewind Starter
56	295871	Pulley-Starter	64	230543	Adapter-Ratchet Spring	71	394506	Washer-Retainer
57	490179	Spring-Rewind Starter	65	94128	Screw-Sem	373	92987	Nut-Hex.
58	66884	Rope-Starter (63" Long)	66	399671	Clutch-Starter	608	390391	Starter-Rewind
59	490653	Insert-Starter Handle	67	394897	Housing-Clutch	655	222598	Anchor-Spring
60	490652	Grip-Starter Rope	68	63770	Ball-Starter Clutch	1016	490817	Spacer

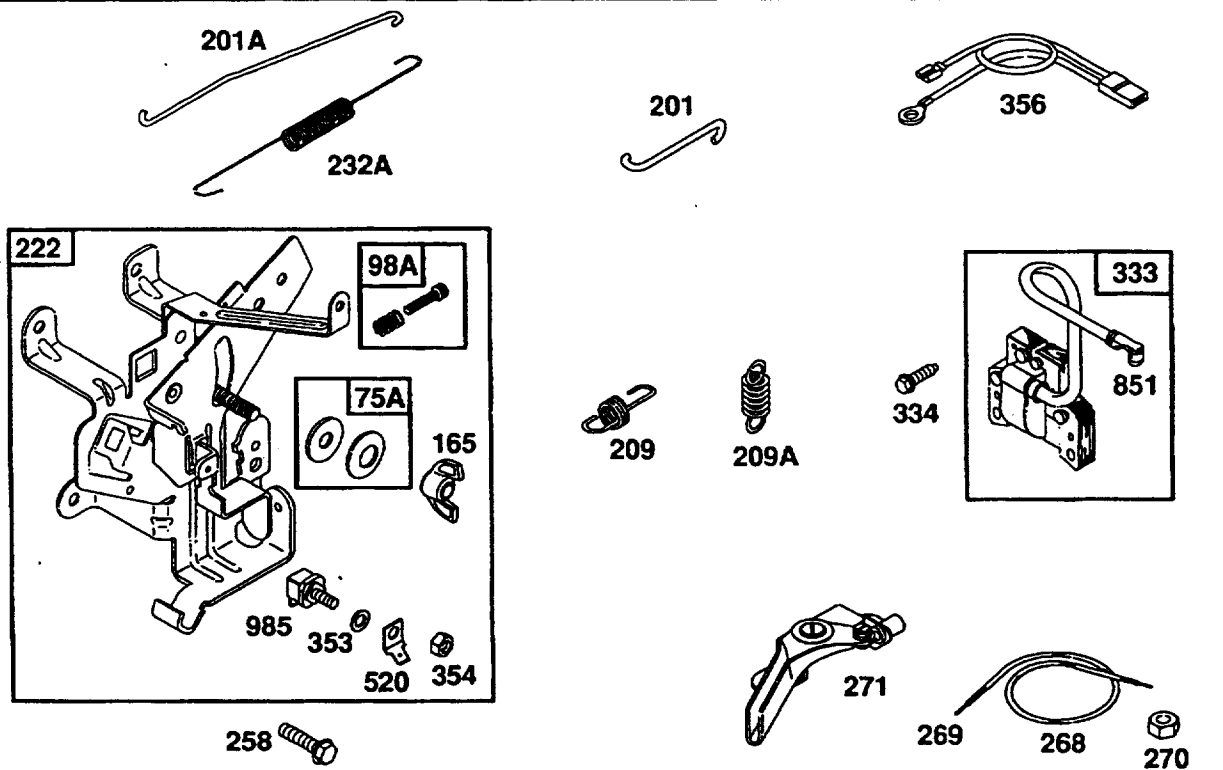
- ★ Included in Gasket Set-Part No. 497070.
- Included in Carburetor Kit-See Ref. No. 121.
- Included in Carburetor Gasket Set-Part No. 497069.

0432-5

Assemblies include all parts shown in frames.

CRAFTSMAN 5000 Watt AC Generator 580.327112

Briggs and Stratton 4 Cycle Engine 19G412-1129-E1



REF. NO.	PART NO.	DESCRIPTION	REF. NO.	PART NO.	DESCRIPTION	REF. NO.	PART NO.	DESCRIPTION
75A	495659	Kit-Washer						
98A	493280	Spring-Speed Adj.						
165	94692	Nut-Wing						
201	263051	Link						
201A	262970	Link						
209	263054	Spring-Governor						
209A	260723	Spring-Governor						
222	497076	Plate-Control						
232A	262959	Spring-Link						
258	94620	Screw-Self Tapping						
268	65616	Casing-Control Wire (72" Long)						
					Note			Shorter Wire is Needed, Cut to Required Length.
					If Longer Casing is Required, Specify Length in Inches; if Shorter Casing is Needed, Cut to Required Length.	270	63426	Locknut-Casing
						271	290568	Lever-Control
						333	492341	Armature-Magneto
						334	94731	Screw-Hex.
						353	92791	Washer-Lock
						354	90576	Nut-Hex.
						356	491391	Wire-Stop
						520	93722	Terminal
						851	493880	Terminal-Cable
						985	398525	Insulator
			269	26633	Wire-Control (78" Long)			
					Note			If Longer Wire is Required, Specify Length in Inches; if

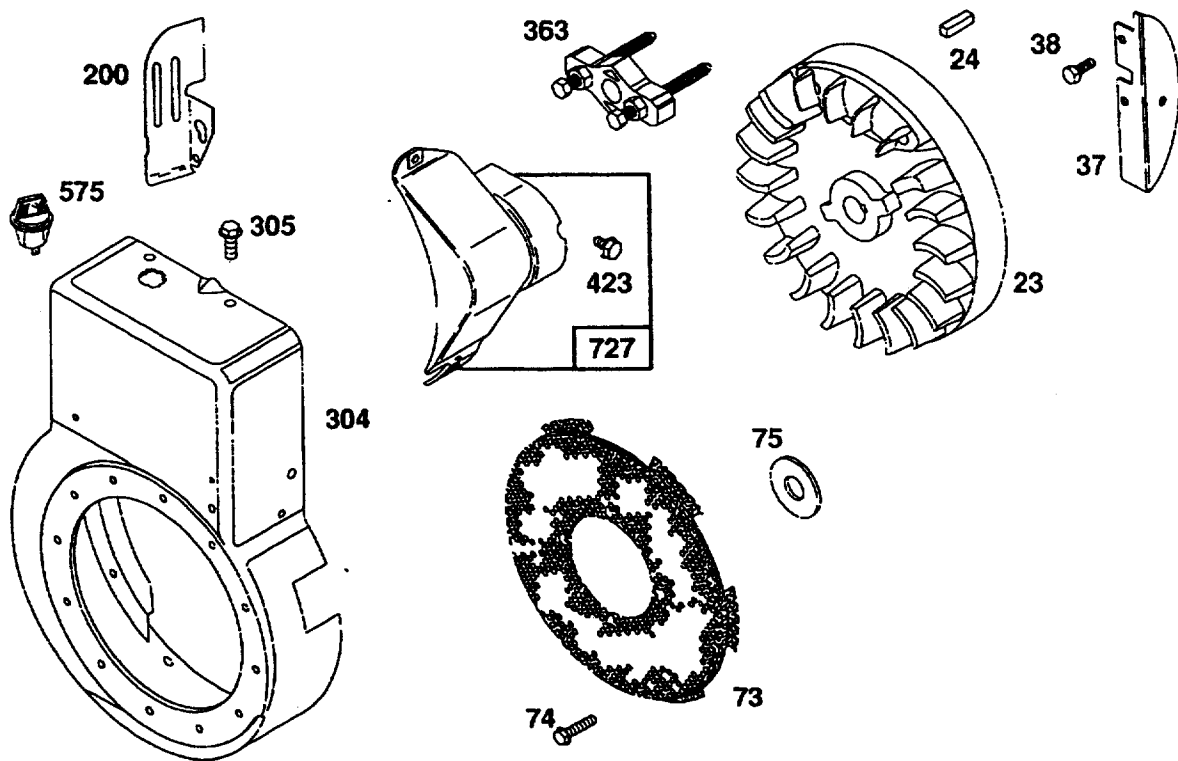
- ★ Included in Gasket Set-Part No. 497070.
- Included in Carburetor Kit-See Ref. No. 121.
- ◆ Included in Carburetor Gasket Set-Part No. 497069.

0432-6

Assemblies include all parts shown in frames.

CRAFTSMAN 5000 Watt AC Generator 580.327112

Briggs and Stratton 4 Cycle Engine 19G412-1129-E1



REF. NO.	PART NO.	DESCRIPTION	REF. NO.	PART NO.	DESCRIPTION	REF. NO.	PART NO.	DESCRIPTION
23	298260	Flywheel	200	221760	Guide-Air	305	94786	Screw-Hex.
24	222698	Key-Flywheel	304	491596	Housing-Blower	363	19203	Puller-Flywheel
37	222475	Guard-Flywheel			----- Note -----	423	94625	Screw-Hex. Head
38	94811	Screw-Hex. Head			491592 Housing-Blower	575	396691	Switch-Rotary Stop
73	224874	Screen-Rotating			Used on Type No(s). 0169.	726	392134	Gear-Ring
74	93758	Screw-Self Tapping				727	395405	Cover-Starter
75	224061	Washer-Flywheel						

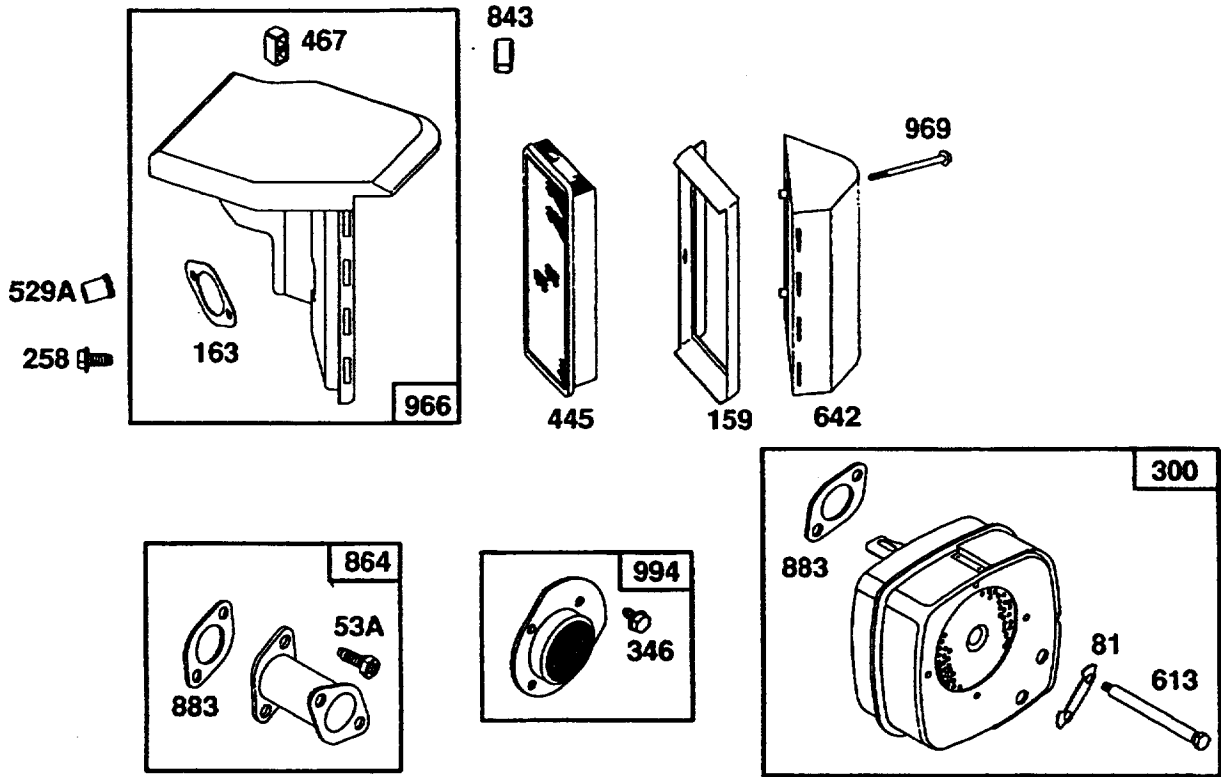
- ★ Included in Gasket Set-Part No. 497070.
- Included in Carburetor Kit-See Ref. No. 121.
- ◆ Included in Carburetor Gasket Set-Part No. 497069.

0432-7

Assemblies include all parts shown in frames.

CRAFTSMAN 5000 Watt AC Generator 580.327112

Briggs and Stratton 4 Cycle Engine 19G412-1129-E1



REF. NO.	PART NO.	DESCRIPTION	REF. NO.	PART NO.	DESCRIPTION	REF. NO.	PART NO.	DESCRIPTION
53A	94706	Screw—Sem	529A	281368	Grommet			<p align="center">Note</p> <p>496247 Base—Air Cleaner (Used Before Code Date 95010200).</p> <p>969 94777 Screw—Air Cleaner</p> <p>994 391913 Arrester—Spark</p>
81	222263	Lock—Muffler Screw	613	94042	Screw—Muffler			
163	272706	Gasket—Air Cleaner	642	281357	Cover—Air Cleaner			
258	94620	Screw—Self Tapping	843	280149	Sleeve—Lever			
300	391370	Muffler—Exhaust	864	497140	Adapter—Muffler			
			883	272309	Gasket—Exhaust	969	94777	
			966	497669	Base—Air Cleaner (Used After Code Date 95010100).	994	391913	
346	93705	Screw—Sem						
445	496077	Filter—Air						
467	280715	Knob						

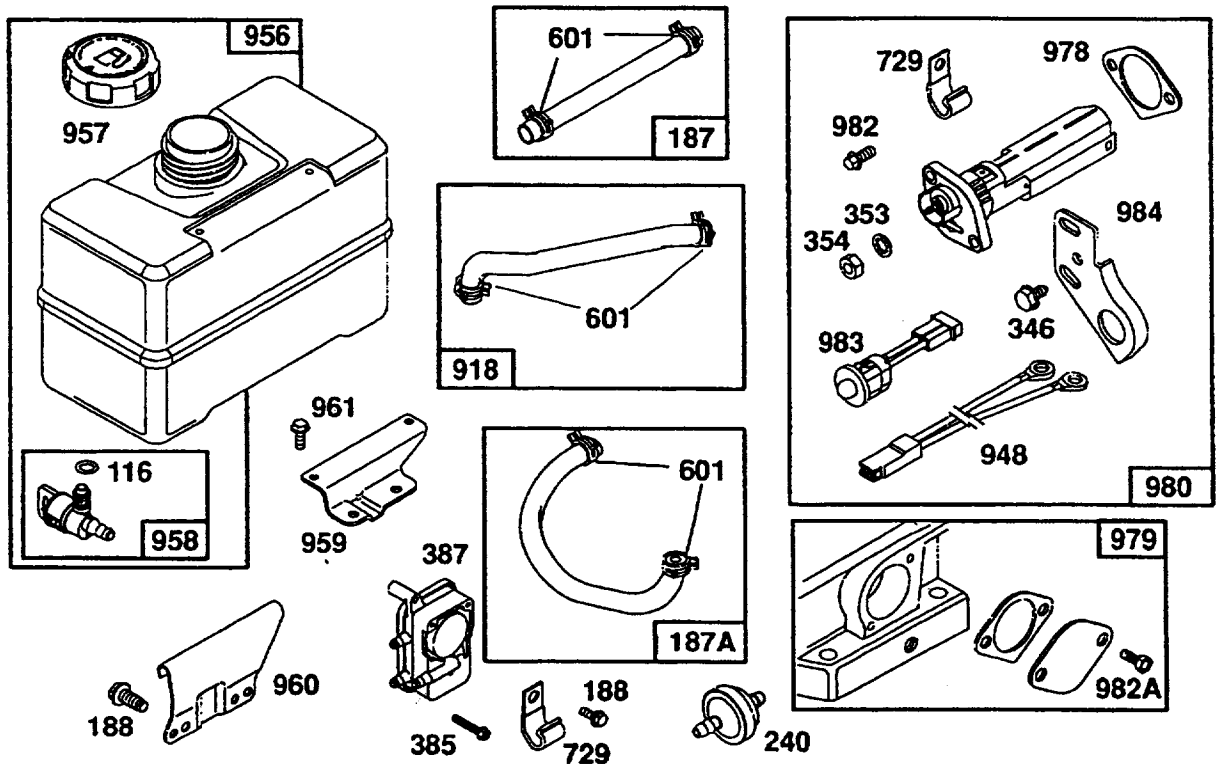
- ★ Included in Gasket Set—Part No. 497070.
- Included in Carburetor Kit—See Ref. No. 121.
- ◆ Included in Carburetor Gasket Set—Part No. 497069.

0432-8

Assemblies include all parts shown in frames.

CRAFTSMAN 5000 Watt AC Generator 580.327112

Briggs and Stratton 4 Cycle Engine 19G412-1129-E1



REF. NO.	PART NO.	DESCRIPTION	REF. NO.	PART NO.	DESCRIPTION	REF. NO.	PART NO.	DESCRIPTION
116	280203	Seal-O-Ring	387	496257	Pump-Fuel	960	492990	Bracket-Fuel Tank
187	393815	Line-Fuel (11" Long, Cut to Suit) Note 296004 Line-Fuel (28" Long, Cut to Suit)	601	93053	Clamp-Hose	961	94095	Screw-Hex. Head
			729	223528	Clip-Wire	978	*271736	Gasket
			918	497547	Line	979	494807	Cover-OIL GARD®
			948	398661	Harness-Wiring	980	398182	OIL GARD® Kit
187A	497029	Line-Fuel	956	493337	Tank-Fuel	982	94657	Screw-Hex. Head
188	94627	Screw-Sem	957	493988	Cap-Fuel Tank	982A	94658	Screw-Hex. Head
240	394358	Filter-Fuel	958	399517	Valve-Shut-Off	983	398660	Light-Indicator
346	93705	Screw-Sem	959	495664	Bracket-Fuel Tank	984	223773	Bracket-Light
353	92791	Lockwasher			Include(s):			
354	90576	Nut-Hex.			94733 Stud-Cyl. Hd.			
385	94789	Screw-Hex. Head			94726 Nut-Hex.			

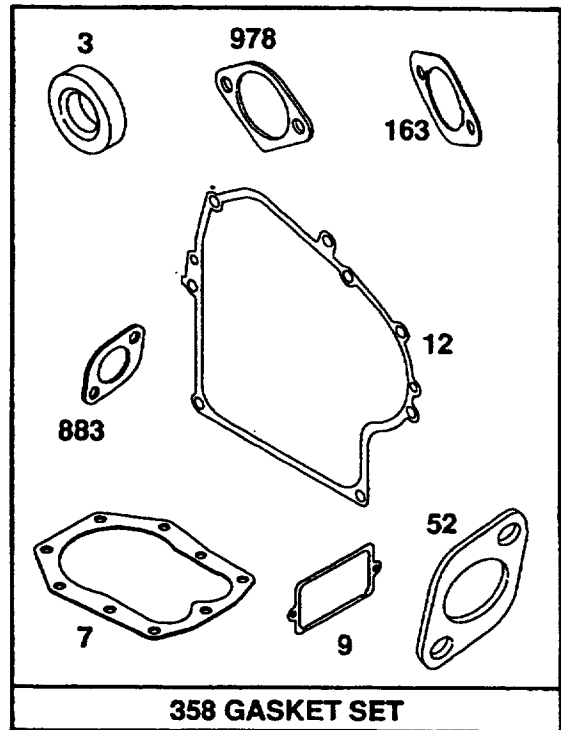
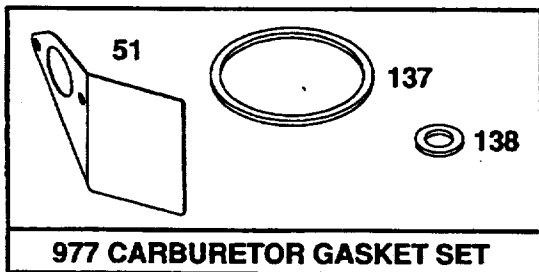
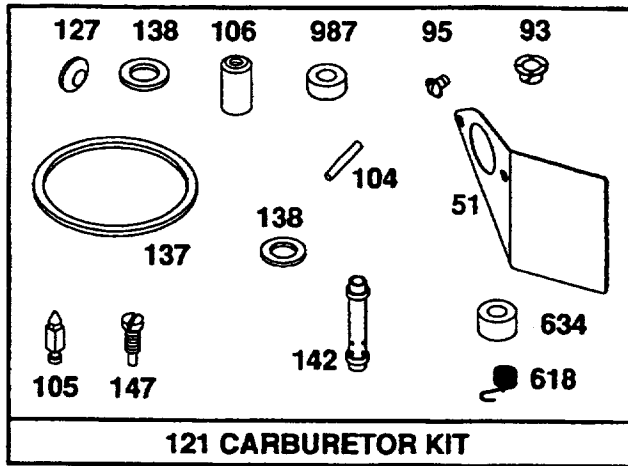
- * Included in Gasket Set-Part No. 497070.
- Included in Carburetor Kit-See Ref. No. 121.
- ◆ Included in Carburetor Gasket Set-Part No. 497069.

0432-9

Assemblies include all parts shown in frames.

CRAFTSMAN 5000 Watt AC Generator 580.327112

Briggs and Stratton 4 Cycle Engine 19G412-1129-E1



REF. NO.	PART NO.	DESCRIPTION	REF. NO.	PART NO.	DESCRIPTION	REF. NO.	PART NO.	DESCRIPTION		
3	*391086	Seal—Oil			<p align="center">Note</p> <p>497166 Carburetor Kit (Used Before Code Date 94062400). 127 • Plug—Welch (Sold in Kit Only) 137 ••281165 Gasket—Float Bowl 138 ••281164 Washer 142 •497564 Nozzle—Carburetor (Used After Code Date 94062300).</p> <p align="center">Note</p> <p>497848 Nozzle—Carb. (High Altitude) Include(s): 281164 Washer (Used After Code Date 94062300). •497197 Nozzle—Carb. (Used Before Code Date 94062400).</p>			497198	Nozzle—Carb. (High Altitude)	
7	*272163	Gasket—Cylinder Hd.							147	•497472 Jet—Pilot (Used After Code Date 94072400).
9	*27803	Gasket—Breather								Note
12	*271701	Gasket—Crankcase (.015" Thick)								•231794 Jet—Pilot (Used Before Code Date 94072500).
		*27876 Gasket—Crankcase (.005" Thick)								
		*27877 Gasket—Crankcase (.009" Thick)								
51	••272708	Gasket—Intake							163	*272706 Gasket—Air Cleaner
52	*272707	Gasket—Intake							358	497070 Gasket Set
93	•281346	Bushing—Shaft							618	•262803 Spring—Choke Return
95	•94098	Screw—Round Head							634	•281168 Seal—Choke Shaft
104	•231789	Pin—Float Hinge							883	*272309 Gasket—Exhaust
105	•231935	Valve—Needle							977	497069 Carburetor Gasket Set
106	•231856	Seat—Inlet							978	*271736 Gasket—Oil Switch
121	497849	Carburetor Kit (Used After Code Date 94062300).							987	•281166 Seal—Throttle Shaft

- * Included in Gasket Set—Part No. 497070.
- Included in Carburetor Kit—See Ref. No. 121.
- Included in Carburetor Gasket Set—Part No. 497069.

0432-12

Assemblies include all parts shown in frames.

NOTES

For California residents only when seeking service in California.

California Emission Control Warranty Statement

Your Warranty Rights and Obligations

The California Air Resources Board ("CARB") and Sears Roebuck and Co., USA, are pleased to explain the Emission Control System Warranty on your 1995 and later lawn and garden equipment engine. In California new utility and lawn and garden equipment engines must be designed, built and equipped to meet the State's stringent anti-smog standards. Sears must warrant the emission control system on your lawn and garden equipment engine for the periods of time listed below provided there has been no abuse, neglect, or improper maintenance of your lawn and garden equipment engine.

Your emission control system includes parts such as the carburetor and the ignition system.

Where a warrantable condition exists, Sears will repair your lawn and garden equipment engine at no cost to you. Expenses covered under under warranty include diagnosis, parts, and labor.

Manufacturer's Warranty Coverage

The 1995 and later utility and lawn and garden equipment engines are warranted for two years. If any emission related part on your engine (as listed below) is defective, the part will be repaired or replaced by Sears.

Owner's Warranty Responsibilities

As the lawn and garden equipment engine owner, you are responsible for the performance of the required maintenance listed in your owners manual. Sears recommends that you retain all receipts covering maintenance on your lawn and garden equipment engine, but Sears cannot deny warranty solely due for the lack of receipts or for your failure to ensure the performance of all scheduled maintenance.

As the lawn and garden equipment engine owner, you should be aware that Sears may deny you warranty coverage if your lawn and garden equipment engine or a part of it has failed due to abuse, neglect, improper maintenance, unapproved modifications, or the use of parts not made or approved by the original equipment manufacturer.

You are responsible for presenting your lawn and garden equipment engine to a Sears authorized repair center as soon as a problem exists. Warranty repairs should be completed in a reasonable amount of time, not to exceed 30 days.

If you have any questions regarding your warranty rights and responsibilities, you should contact your nearest authorized service center or call Sears at 1-800-473-7247.

Warranty Commencement Date

The warranty period begins on the date the lawn and garden equipment engine is delivered.

Length of Coverage

Sears warrants to the initial owner and each subsequent purchaser that the engine is free from defects in materials and workmanship which cause the failure of a warranted part for a period of two years.

What is Covered

Repair or Replacement of Parts

- Repair or replacement of any warranted part will be performed at no charge to the owner at an approved Sears servicing center.
- If you have any questions regarding your warranty rights and responsibilities, you should contact your nearest authorized service center or call Sears at 1-800-473-7247.

Warranty Period

Any warranted part which is not scheduled for replacement as required maintenance, or which is scheduled only for regular inspection to the effect of "repair or replace as necessary" shall be warranted for 2 years. Any warranted part which is scheduled for replacement as required maintenance shall be warranted for the period of time up to the first scheduled replacement point for that part.

Diagnosis

The owner shall not be charged for diagnostic labor which leads to the determination that a warranted part is defective if the diagnostic work is performed at an approved Sears servicing center.

Consequential Damages

Sears may be liable for damages to other engine components caused by the failure of a warranted part still under warranty.

What is Not Covered

All failures caused by abuse, neglect, or improper maintenance are not covered.

Add-on or Modified Parts

The use of add-on or modified parts can be grounds for disallowing a warranty claim. Sears is not liable to cover failures of warranted parts caused by the use of add-on or modified parts.

How to File a Claim

If you have any questions regarding your warranty rights and responsibilities, you should contact your nearest authorized service center or call Sears at 1-800-473-7247.

Where to Get Warranty Service

Warranty services or repairs shall be provided at all Sears authorized service centers.

Maintenance, Replacement and Repair of Emission Related Parts

Any Sears approved replacement part used in the performance of any warranty maintenance or repair on emission related parts will be provided without charge to the owner if the part is under warranty.

Emission Control Warranty Parts List

1. Carburetor Assembly
2. Ignition System
 - a. Spark Plug, covered up to maintenance schedule.
 - b. Ignition Module
3. Crankcase Breather Tube
4. Exhaust Manifold

For in-home major brand repair service:

Call 24 hours a day, 7 days a week

1-800-4-MY-HOMESM (1-800-469-4663)

Para pedir servicio de reparación a domicilio – 1-800-676-5811

In Canada for all your service and parts needs call – **1-800-665-4455**
Au Canada pour tout le service ou les pièces

For the repair or replacement parts you need:

Call 7 am – 7 pm, 7 days a week

1-800-366-PART (1-800-366-7278)

Para ordenar piezas con entrega a domicilio – 1-800-659-7084

For the location of a Sears Parts and Repair Center in your area:

Call 24 hours a day, 7 days a week

1-800-488-1222

**For information on purchasing a Sears Maintenance Agreement
or to inquire about an existing Agreement:**

Call 9 am – 5 pm, Monday – Saturday

1-800-827-6655



The Service Side of SearsSM