

Owner's Manual

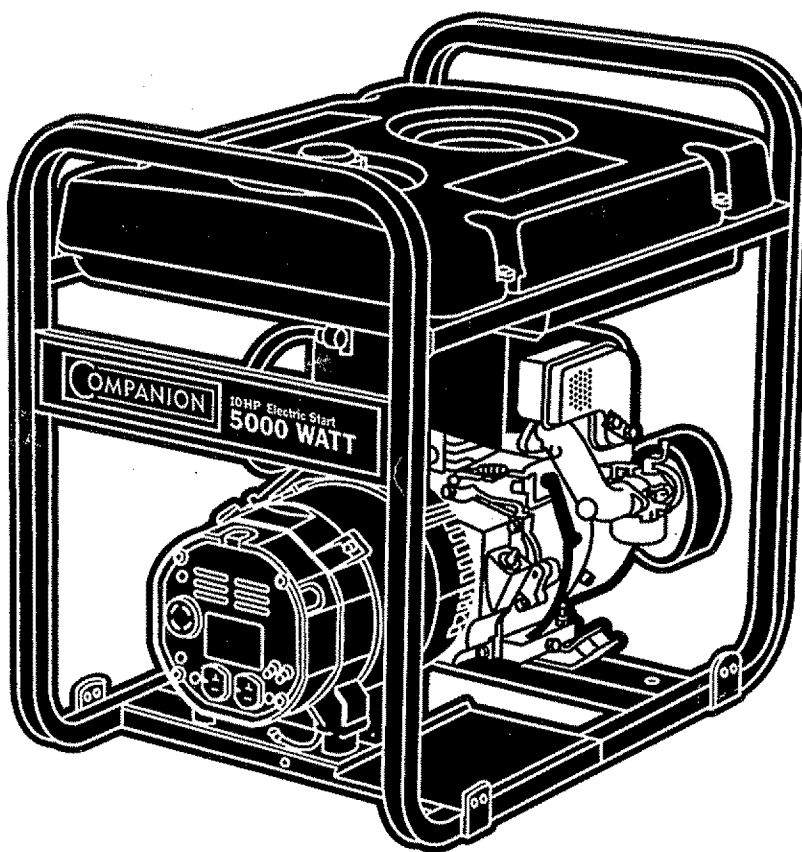
COMPANION

5000 Watt Electric Start AC Generator

Model No. 580.327152



HOURS: Mon. - Fri. 8 a.m. to 5 p.m. (CT)



CAUTION:

Before using this product, read this manual and follow all Safety Rules and Operating Instructions.

Sears, Roebuck and Co., Hoffman Estates, IL 60179
Visit our Craftsman website: www.sears.com

Part No. B2473 Draft 2 (6/18/1999) Printed in the U.S.A.

- Safety
- Assembly
- Operation
- Maintenance
- Parts

TABLE OF CONTENTS

WARRANTY2	STORAGE12
SAFETY INSTRUCTIONS3	TROUBLESHOOTING13
ASSEMBLY4	WIRING DIAGRAM15
OPERATION5-9	REPLACEMENT PARTS16-22
PRODUCT SPECIFICATIONS10	EMISSIONS WARRANTY24-25
MAINTENANCE10-11	HOW TO ORDER PARTS/SERVICE ..BACK PAGE

WARRANTY

LIMITED ONE YEAR WARRANTY FOR COMPANION GENERATORS

SEARS warrants to the original purchaser that the alternator and engine for its portable generator will be free from defects in materials or workmanship for the items and period set forth below from the date of original purchase. This warranty is not transferable.

	CONSUMER*	COMMERCIAL*
Alternator	1 year	90 Days
Engine	1 year	90 Days

* NOTE: For the purpose of this warranty "Consumer Use" means personal residential household and emergency use by original purchaser, not to be used as a primary source of power. "Commercial Use" means all other uses, including rental, construction, commercial, and income producing purposes. Once a generator has experienced commercial use, it shall thereafter be considered a commercial use generator for the purpose of this warranty.

During said warranty period, SEARS will, at its option, repair or replace any part which, upon examination by SEARS, is found to be defective under normal use and service**. Starting batteries are not warranted by SEARS. All transportation costs under warranty, including return to the factory if necessary, are to be borne by the purchaser and prepaid by him. This warranty does not cover normal maintenance and service and does not apply to a generator set, alternator or engine, or parts which have been subjected to improper or unauthorized installation or alteration, misuse, negligence, accident, overloading, over-speeding, improper maintenance, repair or storage so as, in SEARS's judgment, to adversely affect its performance and reliability.

** NORMAL WEAR: As with all mechanical devices, engines need periodic parts service and replacement to perform well. This warranty will not cover repair when normal use has exhausted the life of a part or engine.

THERE IS NO OTHER EXPRESS WARRANTY. SEARS HEREBY DISCLAIMS ANY AND ALL IMPLIED WARRANTIES, INCLUDING BUT NOT LIMITED TO THOSE OF MERCHANTABILITY AND FITNESS FOR A PARTICULAR PURPOSE TO THE EXTENT PERMITTED BY LAW. THE DURATION OF ANY IMPLIED WARRANTIES WHICH CANNOT BE DISCLAIMED IS LIMITED TO THE TIME PERIOD AS SPECIFIED IN THE EXPRESS WARRANTY. LIABILITY FOR CONSEQUENTIAL, INCIDENTAL, OR SPECIAL DAMAGES UNDER ANY AND ALL WARRANTIES IS EXCLUDED.

Some provinces do not allow limitations on how long an implied warranty lasts, or the exclusion or limitation of incidental or consequential damages, so the above limitations or exclusions may not apply to you. This warranty gives you specific legal rights and you may also have other rights, which vary from state to state.

For service, see your nearest SEARS authorized warranty service facility. Warranty service can be performed only by a SEARS authorized service facility. This warranty will not apply to service at any other facility. At the time of requesting warranty service, evidence of original purchase date must be presented.

SEARS, ROEBUCK and CO., D/817WA, Hoffman Estates, IL 60179 U.S.A.

SAFETY INSTRUCTIONS



WARNING:



The engine exhaust from this product contains chemicals known to the State of California to cause cancer, birth defects, or other reproductive harm.



CAUTION: Always disconnect spark plug wire and place the wire where it cannot contact the spark plug. To prevent accidental starting when setting up, transporting, adjusting or making repairs to your Generator.



DANGER: This generator is designed for outdoor use only. Do not use this generator inside any building or enclosure including the generator compartment of a recreational vehicle (RV). Fire or an explosion may result. No user performed modifications, including venting of exhaust and/or cooling ventilation, will eliminate the danger. Also, allow at least two feet of clearance on all sides of the generator even while operating the unit outdoors.



CAUTION: Before using this product, read this manual and follow all Safety Rules and Operating Instructions.

- The generator produces dangerously high voltage that can cause extremely hazardous electrical shock. Avoid contact with bare wires, terminals, etc. Never permit any unqualified person to operate or service the generator.
- Never handle any kind of electrical cord or device while standing in water, while barefoot or while hands or feet are wet.
- The National Electric Code requires the frame and external electrically conductive parts of generator be properly connected to an approved earth ground. Local electrical codes may also require proper grounding of the generator. Consult with a local electrician for grounding requirements in your area.
- Use a ground fault circuit interrupter in any damp or highly conductive area (such as metal decking or steel work).
- Operate generator only on level surfaces and where it will not be exposed to excessive moisture, dirt, dust or corrosive vapors.
- Do not use worn, bare, frayed or otherwise damaged electrical cord sets with the generator.

- Gasoline is highly **FLAMMABLE** and its vapors are **EXPLOSIVE**. Do not permit smoking, open flames, sparks or heat in the vicinity while handling gasoline. Avoid spilling gasoline on a hot engine. Comply with all laws regulating storage and handling of gasoline.
- Never add fuel while unit is running.
- Do not overfill the fuel tank. Always allow room for fuel expansion. If tank is overfilled, fuel can overflow onto a hot engine and cause **FIRE** or an **EXPLOSION**.
- Never store generator with fuel in tank where gasoline vapors might reach an open flame or spark or pilot light (as on a furnace, water heater or clothes dryer). **FIRE** or an **EXPLOSION** might result.
- Generator exhaust gases contain **DEADLY** carbon monoxide gas. Operate this equipment only in the open air where adequate ventilation is available.
- The engine-generator requires an adequate flow of cooling air for its continued proper operation. Never operate the unit inside any room or enclosure where the free flow of cooling air into and out of the unit might be obstructed. Allow at least 2 feet of clearance on all sides of generator, even while operating unit outdoors, or you could damage the unit.
- Never start, or stop, the engine-generator with electrical loads connected to receptacles with the connected devices turned **ON**. Start the engine and let it stabilize before connecting electrical loads. Disconnect all electrical loads before shutting down the generator.
- Do not insert any object through cooling slots of the engine-generator.
- Never operate generator
 - (a) in rain;
 - (b) in any enclosed compartment;
 - (c) if connected electrical devices overheat;
 - (d) if electrical output is lost;
 - (e) if engine or generator sparks;
 - (f) if flames or smoke are observed while unit is running;
 - (g) if unit vibrates excessively.

Note: If you equip the engine with a spark arrestor muffler, the spark arrestor must be maintained in effective working order by the owner/operator.

In the State of California a spark arrestor is required by law (Section 4442 of the California Public Resources Code). Other states may have similar laws. Federal laws apply on federal lands. The spark arrestor part number for this unit is p/n 34479A.



LOOK FOR THIS SYMBOL TO POINT OUT IMPORTANT SAFETY PRECAUTIONS. IT MEANS "ATTENTION!!! BECOME ALERT!!! YOUR SAFETY IS INVOLVED."

ASSEMBLY

Your generator requires some assembly and is ready for use after it has been properly serviced with the recommended oil and fuel.

If you have any problems with the assembly of your generator, please call the generator helpline at 1-800-222-3136

Important: Any attempt to run the engine before it has been serviced with the recommended oil will result in an engine failure.

REMOVE GENERATOR FROM CARTON

- Set the carton on a rigid flat surface with "THIS SIDE UP" arrows pointing upward.
- Carefully open the top flaps of the shipping carton.
- Cut down corners at one end of carton from top to bottom and lay that side of carton down flat.
- Remove all packing material, carton fillers, etc.
- Remove the generator from the shipping carton.

CARTON CONTENTS

Check all contents. If any parts are missing or damaged, call the Generator Helpline at **1-800-222-3136**.

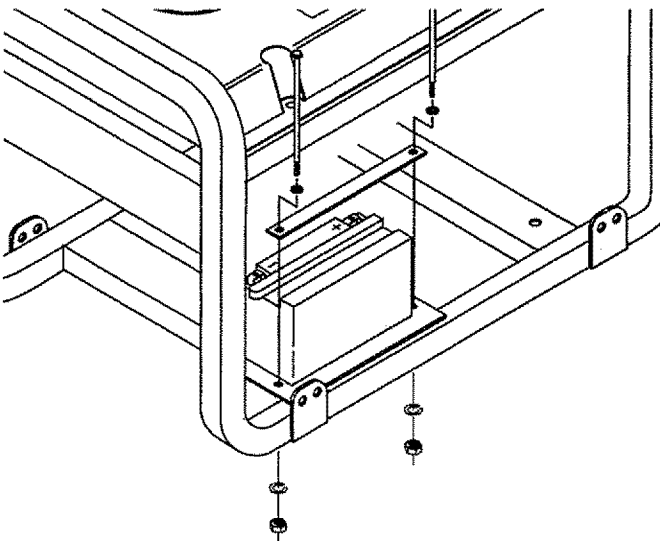
- The main unit
- Electric start battery cables
- Owner's manual
- Engine oil
- Battery mounting brackets

INSTALLING BATTERY

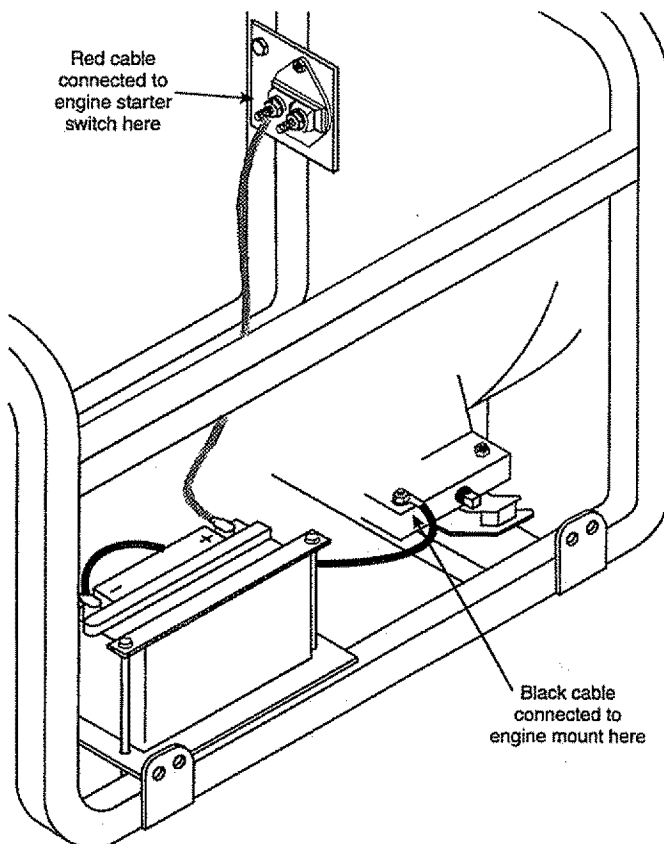
You must purchase and install a 12 Volt DC battery, Series U1 Lawn & Garden Tractor battery (Sears p/n 96135). The battery should be properly serviced with electrolyte fluid and fully charged prior to installation.

Install the battery as follows:

- Set the battery on the generator's battery tray.



- Secure battery as shown with bracket, (2) bolts, (2) flat washers, (2) lock washers and (2) hex nuts.
- Connect the black battery cable from the engine mount bolt to the **negative (-)** battery post. Tighten securely.



CAUTION: Be sure the black cable is connected to the engine mount and not the frame. You could damage the ground wire.

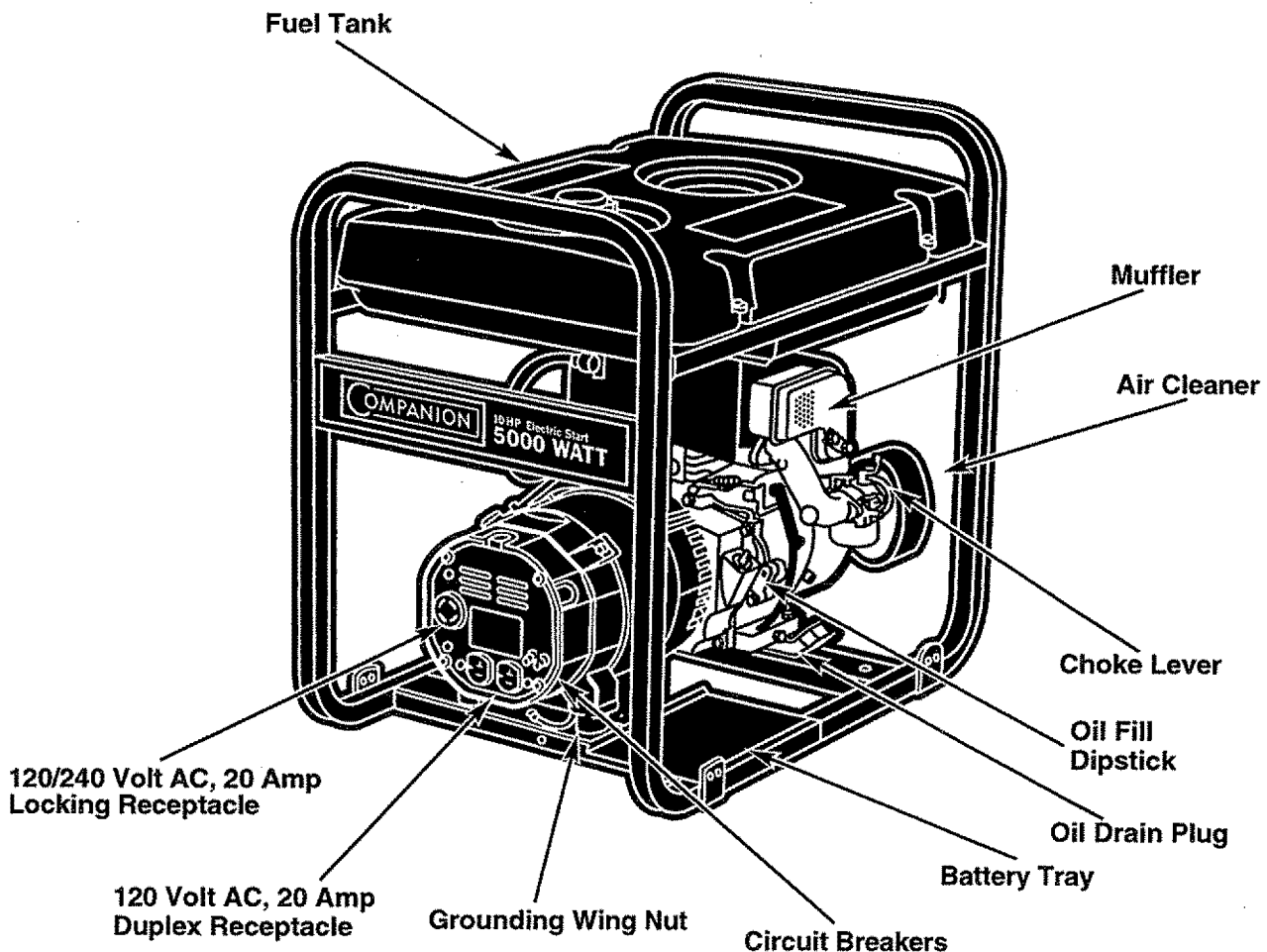
- Connect the red battery cable from the engine starter switch to the **positive (+)** battery post.

OPERATION

KNOW YOUR GENERATOR

Read the owner's manual and safety rules before operating your generator.

Compare the illustration shown below with your generator to familiarize yourself with the locations of various controls and adjustments. Save this owner's manual for future reference.



120 Volt AC, 20 Amp, Duplex Receptacles — May be used to supply electrical power for the operation of 120 Volt AC, 20 Amp, single phase, 60 Hz electrical lighting, appliance, tool and motor loads.

120/240 Volt AC, 20 Amp Locking Receptacle — May be used to supply electrical power for the operation of 120 and/or 240 Volt AC, 20 Amp, single phase, 60 Hz electrical lighting, appliance, tool and motor loads.

Air Cleaner — Filters intake air as it is drawn into the engine.

Battery Tray — Install battery here.

Choke Lever — Used when starting a cold engine.

Circuit Breakers (AC) — Each receptacle is provided with a circuit breaker to protect the generator against electrical overload. Breakers are "push to reset" type.

Fuel Tank — Tank holds 5 U.S. gallons of unleaded gasoline.

Grounding Wing Nut - Provides earth grounding point for generator

Muffler — Muffler lowers engine noise.

Oil Drain Plug — Drain engine oil here.

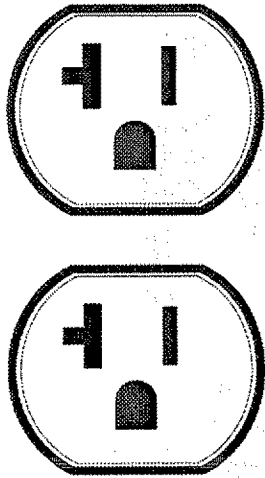
Oil Fill Dipstick — Fill engine with oil here.

CORD SETS AND CONNECTOR PLUGS

120 Volt Duplex Receptacle

Use only high quality, well-insulated, extension cords with the generator's 120 Volt duplex electrical receptacles.

Each receptacle is protected against overload by a push-to-reset circuit breaker. Use each receptacle to operate 120 Volt AC, single phase, 60 Hz electrical loads requiring up to 2400 watts (2.4 kW) at 20 Amps of current.



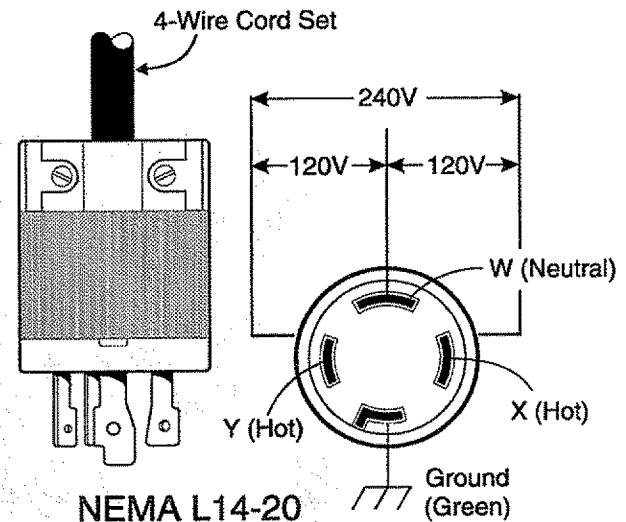
CAUTION! Although each receptacle is rated for 120 Volts at 20 Amps (2400 watts or 2.4 kW), the generator is rated for a total of 5000 watts. Powering loads that exceed the wattage capacity of the generator can damage it or cause serious injuries. The total of loads with 120 Volts powered through these receptacles should not exceed 20 Amps.

Check the ratings of all extension cords before you use them. Extension cord sets used should be rated for 125 Volts AC at 20 Amps or greater for most electrical devices. Some devices, however, may not require this type of extension cord. Check the owner's manuals of those devices for manufacturer's recommendations.

Keep extension cords as short as possible, preferably less than 15 feet long, to prevent voltage drop and possible overheating of wires.

120/240 Volt, 20 Amp Receptacle

This receptacle is a NEMA L14-20R and is protected by a push-to-reset circuit breaker. A NEMA L14-20P mating connector plug is required to use this receptacle. Connect a suitable 4-wire cord set to the plug and to the desired load. The cord set should be rated for 250 Volts at 30 Amps (or greater).



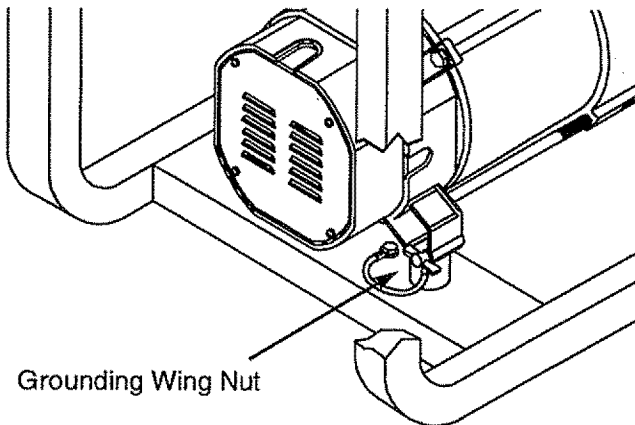
CAUTION! Although this receptacle is rated for 240 Volts at 20 Amps (4800 watts or 4.8 kW), the generator is rated for a total of 5000 watts (5.0 kW). Powering loads that exceed the wattage capacity of the generator can damage it or cause serious injuries. Loads with 240 Volts powered through this receptacle should not exceed 20 Amps.

HOW TO USE YOUR GENERATOR

If you have any problems operating your Generator, please call the Generator helpline at **1-800-222-3136**.

GROUNDING THE GENERATOR

The National Electrical Code requires that the frame and external electrically conductive parts of this generator be properly connected to an approved earth ground. Local electrical codes may also require proper grounding of the unit. For that purpose, a grounding wing nut is provided on the base of the cradle.



Generally, connecting a No. 12 AWG (American Wire Gauge) stranded copper wire to the grounding wing nut and to an earth-driven copper or brass grounding rod (electrode) provides adequate protection against electrical shock. However, local codes may vary widely. Consult with a local electrician for grounding requirements in your area.

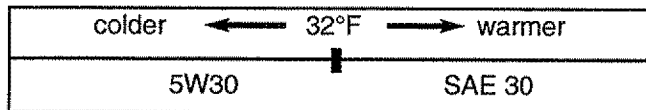
Proper grounding of generator will help prevent electrical shock in the event of a ground fault condition in the generator or in connected electrical devices. Proper grounding also helps dissipate static electricity, which often builds up in ungrounded devices.

BEFORE STARTING THE GENERATOR

To operate the engine you must do the following:

Add Engine Oil

NOTE: When adding oil to the engine crankcase in the future, use only high quality detergent oil rated with API service classification SF or SG or higher rated SAE 30 weight. Use no special additives. Select the oil's viscosity grade according to your expected operating temperature.



Although multi-viscosity oils (5W30, 10W30, etc.) improve starting in cold weather, this type oil will result in increased oil consumption when used above 32°F. Check your engine oil level more frequently to avoid possible damage from running low on oil.

- Place generator on a level surface.
- Clean area around oil fill and remove oil dipstick.
- Wipe dipstick clean.
- Pour oil into oil fill opening until oil reaches FULL mark on the dipstick **Do not overfill!**

Add Gasoline

WARNING NEVER fill fuel tank indoors. NEVER fill fuel tank when engine is running or hot. DO NOT light a cigarette or smoke when filling the fuel tank.

CAUTION: Do not overfill the fuel tank. Always leave room for expansion.

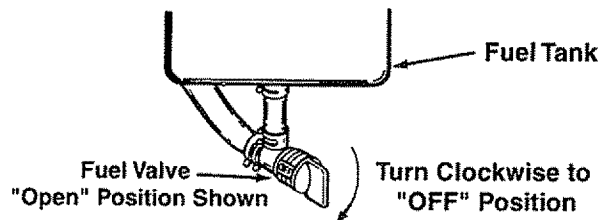
- Use regular UNLEADED gasoline with the Generator engine. Do not use premium gasoline. Do not mix oil with gasoline.
- Clean area around fuel fill cap, remove cap.
- Add unleaded regular gasoline, slowly to fuel tank. Be careful not to overfill. Allow about 1/2" of tank space between bottom of fill opening and top of fuel for fuel expansion.
- Install fuel cap and wipe up any spilled gasoline.

IMPORTANT: It is important to prevent gum deposits from forming in essential fuel system parts such as the carburetor, fuel filter, fuel hose or tank during storage. Also, experience indicates that alcohol-blended fuels (called gasohol, ethanol or methanol) can attract moisture which leads to separation and formation of acids during storage. Acidic gas can damage the fuel system of an engine while in storage. To avoid engine problems, the fuel system should be emptied before storage of 30 days or longer. See "Storage" on page 12. Never use engine or carburetor cleaner products in the fuel tank or permanent damage may occur.

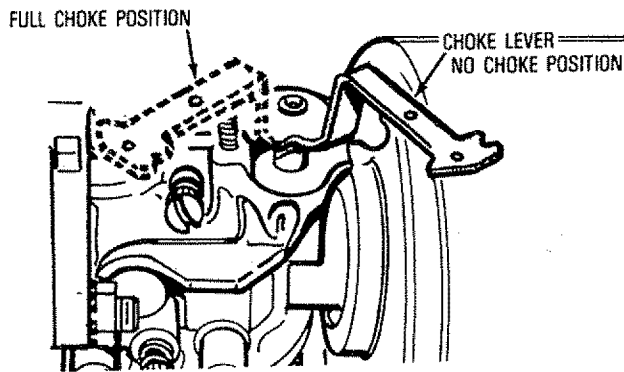
TO START THE ENGINE

WARNING: Never start or stop engine with electrical devices plugged into the panel receptacles and turned on.

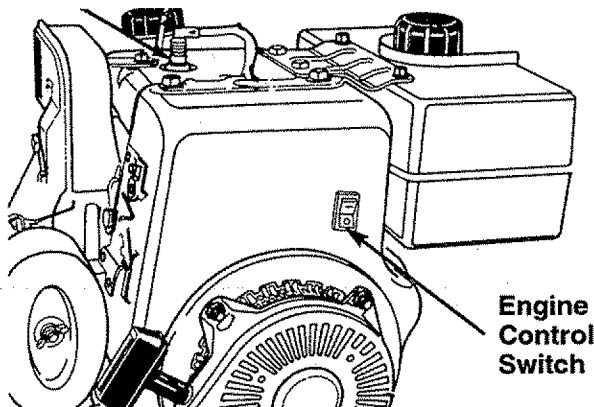
- Unplug all electrical loads from generator receptacles before starting the engine.
- Make sure the unit is in a level position.
- Open the fuel shut-off valve.



- Move the choke lever to the “**Full Choke Position.**”



- Set the engine control switch to the **On (-) Position.**



- **Manual Start:** Grasp starter grip and pull slowly until you feel some resistance. Then pull cord out with rapid full arm stroke. Let rope return slowly. Do not let rope “snap back” against starter.
- **Electric Start:** Hold the engine starter switch on the cradle down until the engine starts.

NOTE: Use short starting cycles (15 seconds per minute) to avoid overheating starter.

- When engine starts, move choke lever to “**1/2 Choke Position**” until the engine runs smoothly and then to “**No Choke Position.**” If engine falters, move choke lever to “**1/2 Choke Position**” until the engine runs smoothly and then to “**No Choke Position.**”

Note: If engine fails to start after 3 pulls, move the choke lever to “**No Choke Position**” and pull starter rope again.

Note: If the engine fails to start after three (3) pulls, check for proper oil level in crankcase. Unit is equipped with a low oil shutdown system.

Note: If engine fires, but does not continue to run, move choke lever to “**Full Choke**” and repeat starting instructions.



CAUTION! Never run engine indoors or in enclosed poorly ventilated areas. Engine exhaust contains carbon monoxide, an odorless and deadly gas.



WARNING! temperature of muffler and nearby areas may exceed 150°F (65°C). Avoid these areas.

STOPPING THE ENGINE

- Unplug all electrical loads from generator panel receptacles. **Never** start or stop engine with electrical devices plugged in and turned on.
- Let engine run at no-load for several minutes to stabilize the internal temperatures of engine and generator.
- Move engine control switch to **Off (o) Position.**
- Close the fuel shut-off valve

CONNECTING ELECTRICAL LOADS

- Let engine stabilize and warm up for a few minutes after starting.
- Plug in and turn on the desired 120 and/or 240 Volt AC, single phase, 60 Hz electrical loads.
- **Do not** connect 240 Volt loads to the 120 Volt duplex receptacles
- **Do not** connect 3-phase loads to the receptacles.
- **Do not** connect 50 Hz loads to the receptacles.
- **DO NOT OVERLOAD THE GENERATOR.** Add up the rated watts (or Amps) of all loads to be connected at one time. This total should not be greater than the rated wattage/ampere capacity of the generator. See “Don’t Overload the Generator” on Page 9.

LOW OIL LEVEL SHUTDOWN SYSTEM

Sensing Low Oil Level

If the system senses a low oil level during operation, the engine shuts down. If the engine shuts down by itself and it has enough gasoline in the fuel tank, check oil level.

Restarting

If you attempt to restart the engine after such a shutdown and have not corrected the engine oil level, the engine will not start. Check the oil and refill according to the instructions on page 7.

DON'T OVERLOAD THE GENERATOR

Overloading a generator in excess of its rated wattage capacity can result in damage to the generator and to connected electrical devices. Observe the following, to prevent overloading the unit:

- Add up the total wattage of all electrical devices to be connected at one time. This total should NOT be greater than the generator's wattage capacity.
- The rated wattage of lights can be taken from light bulbs. The rated wattage of tools, appliances and motors can usually be found on a data plate or decal affixed to the device.
- If the appliance, tool or motor does not give wattage, multiply volts times ampere rating to determine watts (volts x amps = watts).

- Some electric motors, such as induction types, require about two and a half times more watts of power for starting than for running. This surge of power lasts only a few seconds when starting such motors. Make sure you allow for this high starting wattage when selecting electrical devices to connect to your generator. First, figure the watts needed to start the largest motor. Add to that figure the running watts of all other connected loads.

The Wattage Reference Guide below is provided to assist you in determining how many items your generator can operate at one time.

WATTAGE REFERENCE GUIDE

Electrical Device	Running Watts
*Air Conditioner (12,000 Btu)	~1700
Battery Charger (20 Amp)	~500
Belt Sander (3")	~1000
Chain Saw	~1200
Circular Saw (6-1/2")	~800 to 1000
Coffee Maker	~1000
*Compressor (1 HP)	~2000
*Compressor (3/4 HP)	~1800
*Compressor (1/2 HP)	~1400
Curling Iron	~700
*Freezer	~500
Disc Sander (9")	~1200
Edge Trimmer	~500
Electric Nail Gun	~1200
Electric Range (one element)	~1500
Electric Skillet	~1250
*Furnace Fan (1/3 HP)	~1200
Hair Dryer	~1200
Hand Drill (1")	~1100
Hand Drill (1/2")	~750 to 1000
Hand Drill (3/8")	~500
Hand Drill (1/4")	~250
Hedge Trimmer	~450
Impact Wrench	~500

Electrical Device	Running Watts
*Jet Pump	~800
Lawn Mower	~1200
Light Bulb	~100
Microwave Oven	~700
*Milk Cooler	~1100
Oil Burner on Furnace	~300
Oil Fired Space Heater (140,000 Btu)	~400
Oil Fired Space Heater (85,000 Btu)	~225
Oil Fired Space Heater (30,000 Btu)	~150
*Paint Sprayer, Airless (1/3 HP)	~600
Paint Sprayer, Airless (handheld)	~150
Radio	~50 to 200
*Refrigerator	~600
Slow Cooker	~200
*Submersible Pump (1-1/2 HP)	~2800
*Submersible Pump (1 HP)	~2000
*Submersible Pump (1/2 HP)	~1500
Sump Pump	~600
*Table Saw (10")	~1750 to 2000
Television	~200 to 500
Weed Trimmer	~500

* Allow 3 times the listed watts for starting these devices.

MAINTENANCE

Maintenance Schedule

Follow the hourly or calendar intervals, whichever occurs first.

More frequent service is required when operating in adverse conditions noted below.

Maintenance Operation	Every 5 Hours or Daily	25 Hours or Every Season	50 Hours or Every Season	100 Hours or Every Season
Check oil level	X			
Change oil and oil filter ‡		X*		
Service air cleaner		X**		
Replace spark plug				X
Prepare Unit for storage	Prepare unit for storage if it is to remain idle for more than 30 days			

‡ Change oil after first 5 hours of operation then after every 25 hours or every season.

* Change oil and oil filter sooner when operating under heavy load or in high temperatures.

** Clean more often under dirty or dusty conditions.

PRODUCT SPECIFICATIONS

Generator Specifications

Rated Maximum Power 5000 Watts (5.0 kW)
 Surge Power 6250 Watts (6.25 kW)
 Rated Voltage 120/240 Volts AC
 Rated Maximum Current
 at 240 Volts 20.8 AC Amperes
 Rated Maximum Current
 at 120 Volts 41.7 AC Amperes
 Rated Frequency 60 Hz at 3600 rpm
 Phase Single Phase

Engine Specifications

Rated Horsepower 10 at 3600 rpm
 Spark Plug
 Type: Champion RJ17LM or
 Equivalent
 Set Gap To: 0.030inch (0.76mm)
 Gasoline Capacity 5 U.S. gallons
 Oil
 Summer SAE 30 (10W-30)
 Winter SAE 5W-20 or 5W-30

GENERAL RECOMMENDATIONS

The Generator warranty does not cover items that have been subjected to operator abuse or negligence. To receive full value from the warranty, operator must maintain unit as instructed in this manual.

Some adjustments will need to be made periodically to properly maintain your Generator.

All adjustments in the Service and Adjustments section of this manual should be made at least once each season. Follow the requirements in the "Maintenance Schedule" chart above.

Note: Once a year you should clean or replace the spark plug and replace the air filter. A new spark plug and clean air filter assure proper fuel-air mixture and help your engine run better and last longer.

GENERATOR MAINTENANCE

Generator maintenance consists of keeping the unit clean and dry. Operate and store the unit in a clean dry environment where it will not be exposed to excessive dust, dirt, moisture or any corrosive vapors. Cooling air slots in the generator must not become clogged with snow, leaves, or any other foreign material.

Check the cleanliness of the generator frequently and clean when dust, dirt, oil, moisture or other foreign substances are visible on its exterior surface.

Note: We **DO NOT** recommend using a garden hose to clean generator. Water can enter the engine fuel system and cause problems. In addition, if water enters the generator through cooling air slots, some of the water will be retained in voids and cracks of the rotor and stator winding insulation. Water and dirt buildup on the generator internal windings will eventually decrease the insulation resistance of these windings.

CLEAN THE GENERATOR



CAUTION: Never Insert any object or tool through the air cooling slots, even if the engine is not running.

- Use a damp cloth to wipe exterior surfaces clean.
- A soft, bristle brush may be used to loosen caked on dirt, oil, etc.
- A vacuum cleaner may be used to pick up loose dirt and debris.

- Low pressure air (not to exceed 25 psi) may be used to blow away dirt. Inspect cooling air slots and openings on the generator. These openings must be kept clean and unobstructed.

ENGINE MAINTENANCE



DANGER: When working on the generator always disconnect spark plug wire from spark plug and keep it away from spark plug.

Checking Oil Level

Oil level should be checked prior to each use or at least every 5 hours of operation. Keep oil level maintained.

Changing Engine Oil

Change oil after first 5 hours of operation. Change oil & oil filter every 25 hours thereafter. If you are using your generator under extremely dirty or dusty conditions, or in extremely hot weather, change oil more often.

Change oil while engine is still warm from running, as follows:

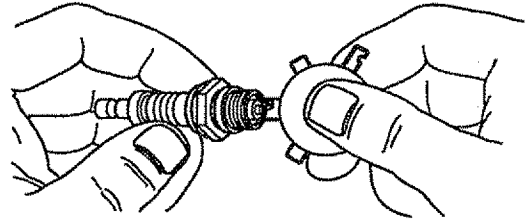
- Clean area around oil drain plug.
- Remove oil drain plug and oil fill plug and drain oil completely into a suitable container.
- When oil has completely drained, install oil drain plug and tighten securely.
- Fill oil sump with recommended oil. (See "Before Starting the Engine" on page 7 for oil recommendations)
- Install the oil fill plug and tighten securely.
- Wipe up any spilled oil.

Clean/Replace Spark Plug

Change the spark plug every 100 hours of operation or once each year, whichever comes first. This will help your engine to start easier and run better. See "Specifications" for proper spark plug.

- Clean area around spark plug.
- Remove and inspect spark plug.

- Check electrode gap with wire feeler gauge and set spark plug gap to 0.030 inch (0.76mm) if necessary.



- Replace spark plug if electrodes are pitted, burned or porcelain is cracked.

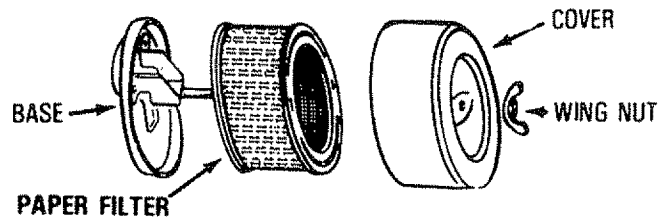
Service Air Cleaner

Your engine will not run properly and may be damaged if you run it using a dirty air cleaner.

Clean or replace the air cleaner every 100 hours of operation or once a year, whichever comes first. Clean or replace more often if operating under dusty or dirty conditions. Replacements are available at your local Sears Authorized Service Center

To clean or replace air cleaner follow these steps:

- Remove wing nut.
- Remove air cleaner cover carefully.



- Remove the air filter and examine it for damage.
- Clean air filter by gently tapping it on a solid surface. If the filter is too dirty, replace the filter with a new one. Dispose of the old filter properly.
- Reassemble all parts and fasten securely to the engine with the wing nut.

Note: Do not use pressurized air or petroleum solvents such as kerosene to clean cartridge.

STORAGE

GENERAL

The generator should be started at least once every seven days and allowed to run at least 30 minutes. If this cannot be done and you must store the unit for more than 30 days, use the following information as a guide to prepare it for storage.

LONG TERM STORAGE INSTRUCTIONS



WARNING: NEVER store engine with fuel in tank indoors or in enclosed, poorly ventilated areas where fumes may reach an open flame, spark or pilot light as on a furnace, water heater, clothes dryer or other gas appliance.

It is important to prevent gum deposits from forming in essential fuel system parts such as the carburetor, fuel filter, fuel hose or tank during storage. Also, experience indicates that alcohol-blended fuels (called gasohol, ethanol or methanol) can attract moisture which leads to separation and formation of acids during storage. Acidic gas can damage the fuel system of an engine while in storage.

To avoid engine problems, the fuel system should be emptied before storage of 30 days or longer. Follow these instructions:

Protect Fuel System



WARNING: Drain fuel into approved container outdoors, away from open flame. Be sure engine is cool. Do not smoke.

- Remove all gasoline from the fuel tank to prevent gum deposits from forming on these parts and causing possible malfunction of engine.
- Run engine until engine stops from lack of fuel.

Change Oil

While engine is still warm, drain oil from crankcase. Refill with recommended grade.

Oil Cylinder Bore

- Remove spark plug and pour about 1/2 ounce (15ml) of engine oil into the cylinder. Cover spark plug hole with rag. Crank slowly to distribute oil.



CAUTION! Avoid spray from spark plug hole when cranking engine slowly.

- Install spark plug. Do not connect spark plug wire.

GENERATOR:

- Clean the generator as outlined on page 10 ("Clean the Generator").
- Check that cooling air slots and openings on generator are open and unobstructed.

OTHER STORAGE TIPS:

- Do not store gasoline from one season to another.
- Replace your gasoline can if your can starts to rust. Rust and/or dirt in your gasoline will cause problems.
- If possible, store your unit indoors and cover it to give protection from dust and dirt. **BE SURE TO EMPTY THE FUEL TANK.**
- Cover your unit with a suitable protective cover that does not retain moisture.
- Store generator in clean, dry area.



DANGER: NEVER cover your Generator while engine and exhaust area are warm.

TROUBLESHOOTING

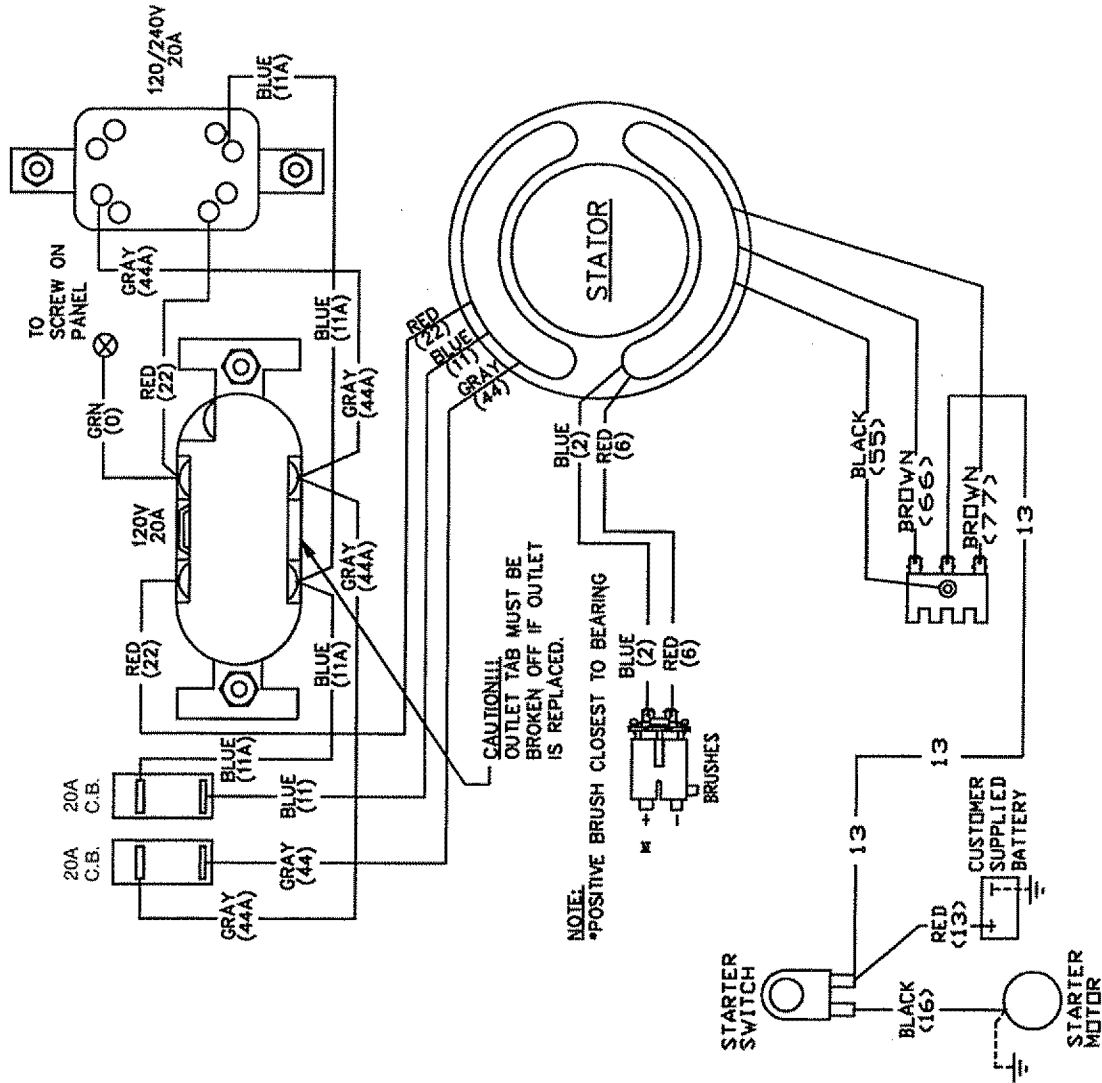
PROBLEM	CAUSE	CORRECTION
Engine is running, but no AC output is available.	<ol style="list-style-type: none"> 1. One of the circuit breakers is open. 2. Fault in generator. 3. Poor connection or defective cord set. 4. Connected device is bad. 	<ol style="list-style-type: none"> 1. Reset circuit breaker. 2. Contact Sears Service Facility. 3. Check and repair. 4. Connect another device that is in good condition.
Engine runs good at no-load but "bogs down" when loads are connected	<ol style="list-style-type: none"> 1. Short circuit in a connected load. 2. Engine speed is too slow. 3. Generator is overloaded. 4. Shorted generator circuit. 	<ol style="list-style-type: none"> 1. Disconnect shorted electrical load. 2. Contact Sears Service Facility. 3. See "Don't Overload the Generator", page 9. 4. Contact Sears Service Facility.
Engine will not start; or starts and runs rough.	<ol style="list-style-type: none"> 1. Run/Stop Switch set to STOP. 2. Dirty air cleaner 3. Out of gasoline. 4. Stale gasoline. 5. Spark plug wire not connected to spark plug. 6. Bad spark plug. 7. Water in gasoline. 8. Overchoking. 9. Low oil level 10. Excessively rich fuel mixture. 11. Intake valve stuck open or closed. 12. Engine has lost compression. 	<ol style="list-style-type: none"> 1. Set switch to RUN. 2. Clean or replace air cleaner. 3. Fill fuel tank. 4. Drain gas tank; fill with fresh fuel. 5. Connect wire to spark plug. 6. Replace spark plug. 7. Drain gas tank; fill with fresh fuel. 8. Open choke fully and crank engine. 9. Fill crankcase to proper level. 10. Contact Sears Service Facility. 11. Contact Sears Service Facility. 12. Contact Sears Service Facility.
Engine shuts down during operation	<ol style="list-style-type: none"> 1. Out of gasoline. 2. Low oil level. 	<ol style="list-style-type: none"> 1. Fill fuel tank. 2. Fill crankcase to proper level.
Engine lacks power.	<ol style="list-style-type: none"> 1. Load is too high. 2. Dirty air filter. 	<ol style="list-style-type: none"> 1. See "Don't Overload the Generator" 2. Replace air filter.
Engine "hunts" or falters.	<ol style="list-style-type: none"> 1. Choke is opened too soon. 2. Carburetor is running too rich or too lean. 	<ol style="list-style-type: none"> 1. Move choke to halfway position until engine runs smoothly. 2. Contact Sears Service Facility.

WIRING DIAGRAM/SCHEMATIC

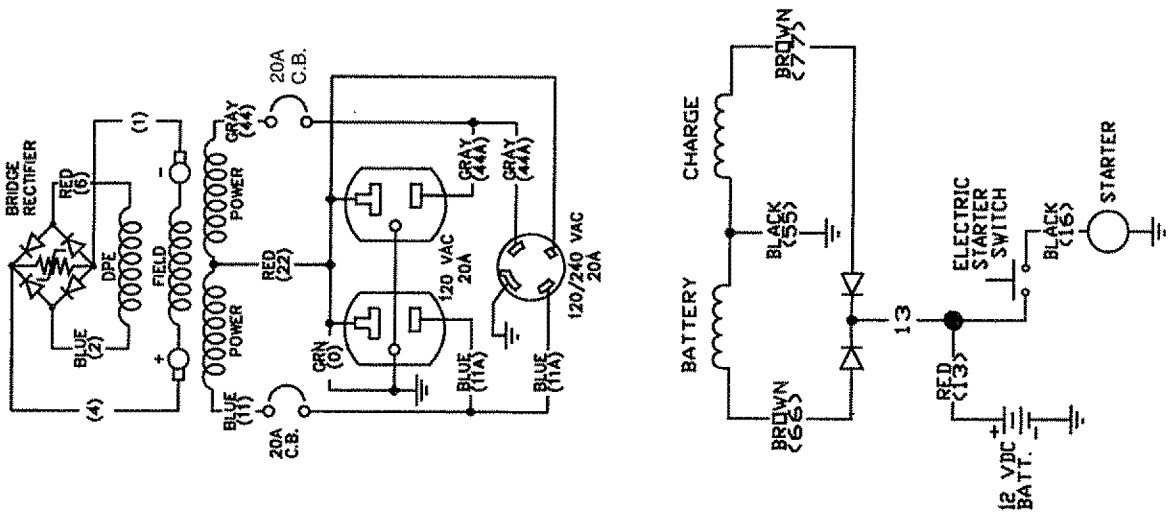
CRAFTSMAN 5000 Watt AC Generator 580.327152

Wiring Diagram

WIRING DIAGRAM



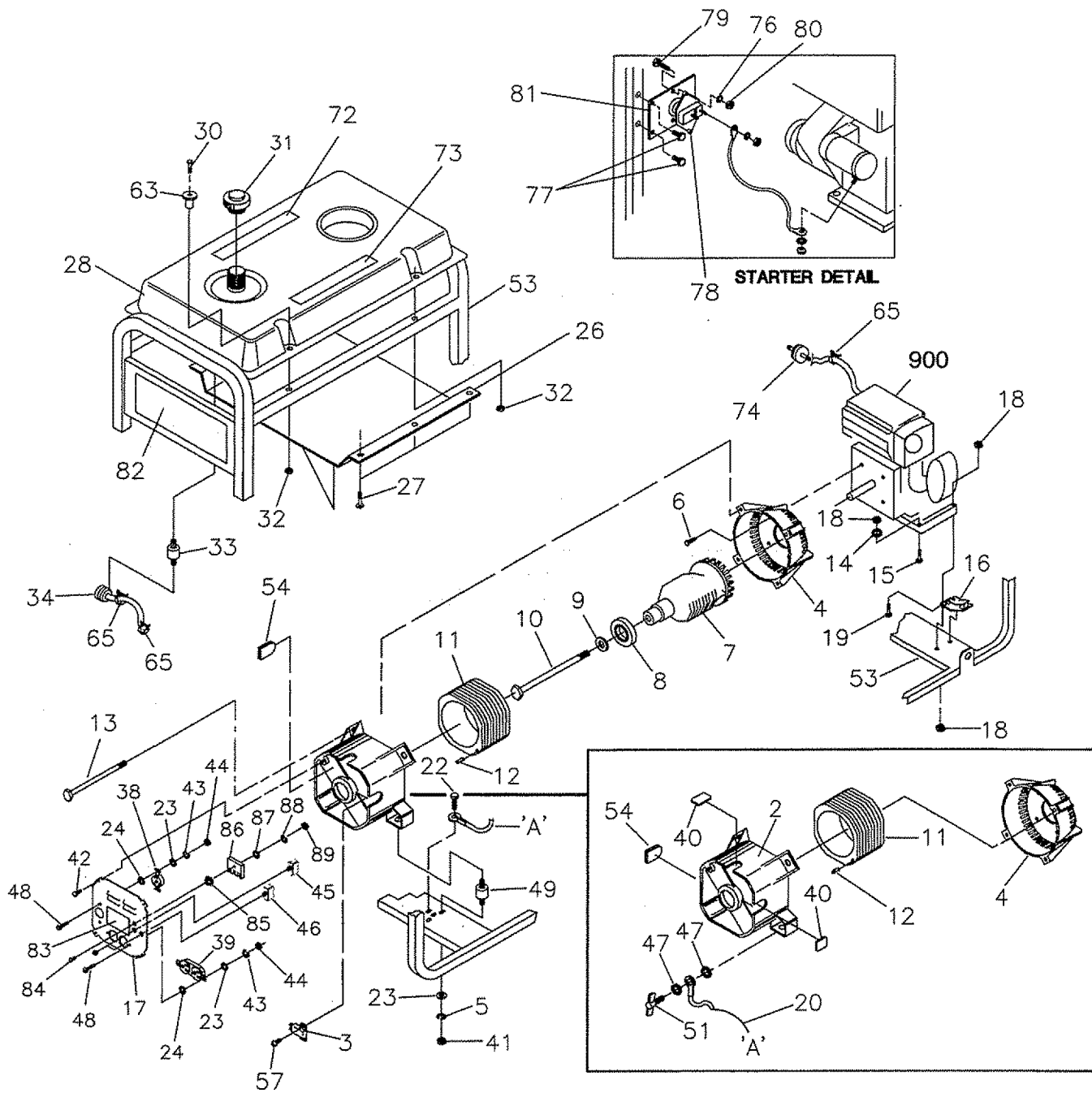
SCHEMATIC



PARTS

CRAFTSMAN 5000 Watt AC Generator 580.327152

Main Unit — Exploded View

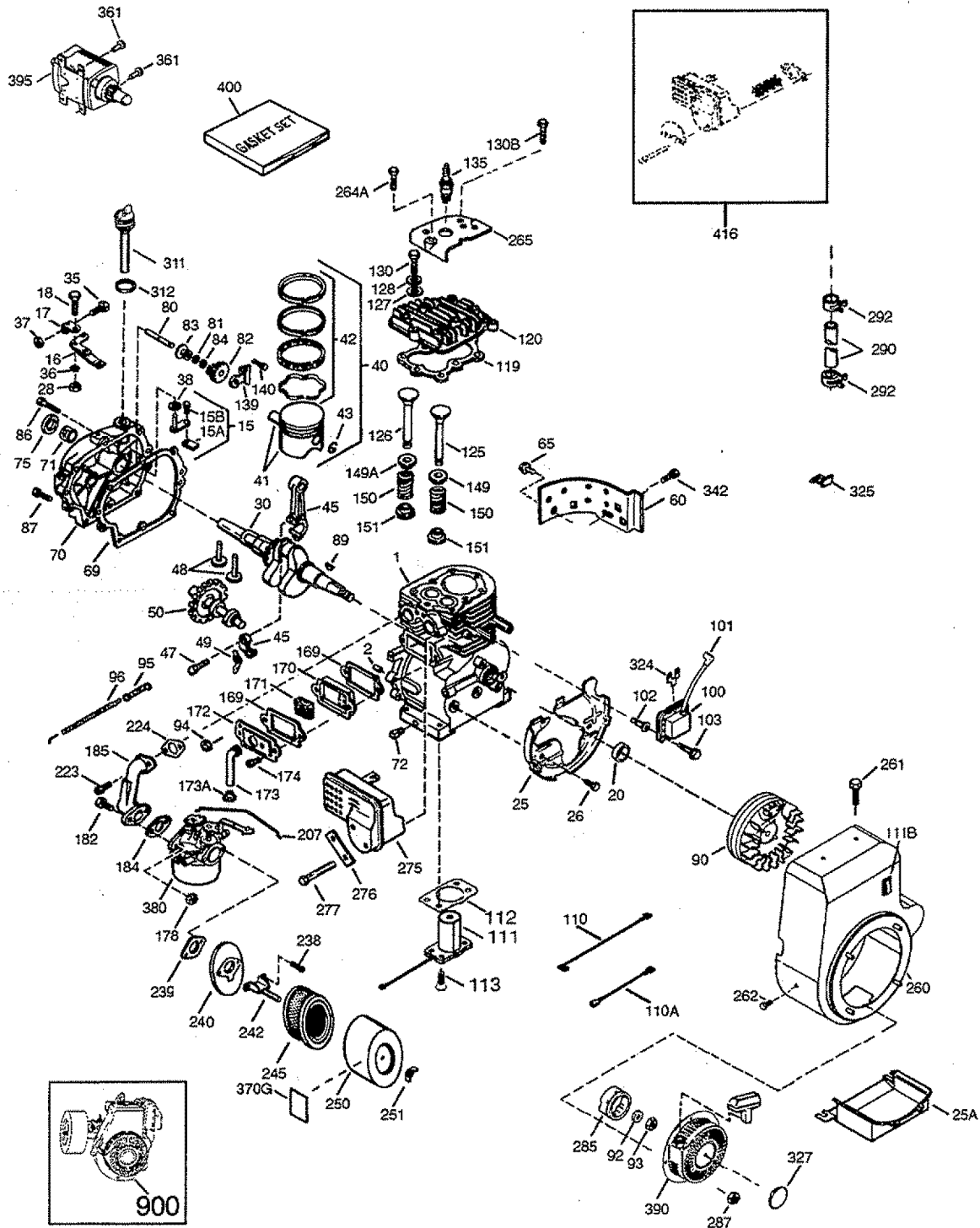


CRAFTSMAN 5000 Watt AC Generator 580.327152

Main Unit — Parts List

Item	Part #	Qty.	Description	Item	Part #	Qty.	Description
2	66825B	1	CARRIER, Rear Bearing	49	85652	2	MOUNT, Rubber
3	91825	1	ASSEMBLY, Brush & Bridge Rectifier	50	82308	6	SCREW, Self Tapping
4	66365D	1	ADAPTER, Housing	51	86494	1	SCREW, M6 x 16 Lg. Wing
5	22129	2	LOCK WASHER, M8	53	B1635B	1	CRADLE
6	86307	4	SCREW, Hex Hd 5/16-24 x 3/4 Sems	54	67022	1	GROMMET, Rubber
7	74716J	1	ASSEMBLY, Rotor	57	66849	2	SCREW, M5 - 0.8 x 15
8	65791	1	BEARING	63	83465	4	GROMMET, Mounting Tank
9	67451	1	WASHER, Special	65	48031C	3	CLAMP, Hose - 1/4"
10	75431	1	BOLT, Rotor	72	92982	1	DECAL, Danger
11	B2762J	1	ASSEMBLY, Stator	73	93826	1	DECAL, Operating Instructions
12	81917	1	PIN, Roll M4 x 10 Lg.	74	68740	1	FILTER, Fuel
13	86308C	4	BOLT, Stator	76	22097	2	WASHER, M6 Lock
14	27482	1	LOCK WASHER, Shakeproof	77	75494	2	SCREW, Self Drilling
15	39414	1	BOLT, M8 - 1.25 x 35	78	77282	1	SWITCH, Starter
16	70642	2	MOUNT, Vibration - 45°	79	22287	2	SCREW, 1/4" - 20 x 3/4"
17	B3104	1	COVER, Control Panel	80	22127	2	NUT, 1/4" - 20 Hex
18	52858	7	LOCK NUT, M8-1.25 Flange	81	78289	1	BRACKET, Starter Switch
19	76222	2	PPHMS, M8-1.25 x 40 mm	82	B3049	1	DECAL, Panel Control
20	143-53621	1	WIRE, Ground	83	98247	1	DECAL, Control Panel
23	38150	6	WASHER, #8 Flat	84	75477	1	PPHMS, M5 - 0.8 x 20
24	23365	4	WASHER, Lock Serrated No. 8	85	23762	1	SHAKEPROOF, Ext. #10
26	78951B	1	SHIELD, Heat	86	65795	1	RECTIFIER, Battery Charge
27	56892	2	10-24 x 3/8 Lg. Crimptite	87	23897	1	FLAT WASHER, #10 - M5
28	77374	1	TANK, Gas Plastic 5 Gal.	88	49226	1	LOCKWASHER, M5
30	78831B	4	CAPSCREW, Hex Hd. M6 x 60 mm Blk	89	51716	1	NUT, Hex M5 - 0.8
31	90878	1	CAP, Fuel Tank	900	NSP	1	ENGINE, 143.981007
32	77395	4	NUT, Hex Lock - M6	Parts Not Illustrated			
33	78299	1	BUSHING, Plastic Tank	B2473	1	Owner's Manual	
34	80270	1	VALVE, Plastic Tank	NSP	1	28oz. SAE30 Engine Oil	
38	68867	1	OUTLET, 120/240 Twist Lock	Battery Tray Parts - Not Illustrated			
39	68759	1	OUTLET, 120 Volt 20amp. Duplex	44951	1	Battery Hold Down Bar	
40	84242	2	GROMMET, Rubber	45000	2	Hex Head Cap Screw	
41	45771	2	NUT, Hex 5/16 - 18	22097	2	Lock Washer	
42	74908	4	SCREW, Hex M5 - 0.80 x 10	22127	2	Hex Nut	
43	22264	4	WASHER, #8 Lock	113-53621	1	Negative Battery Cable	
44	51715	4	NUT, Hex - M4 - 0.7	113-53621	1	Positive Battery Cables	
45	94396B	1	CIRCUIT BREAKER - 20Amp	Optional Accessories Not Illustrated			
46	94396B	1	CIRCUIT BREAKER - 20Amp	09-32684		Wheel Kit	
47	26850	2	WASHER, Shakeproof 1/4"	09-32688		Cord Wrap Kit	
48	75475	4	SCREW, M4 - 0.7 x 10 Pan Head	09-32686		120/240V 20A Plug	

Tecumseh Engine – 143.981007

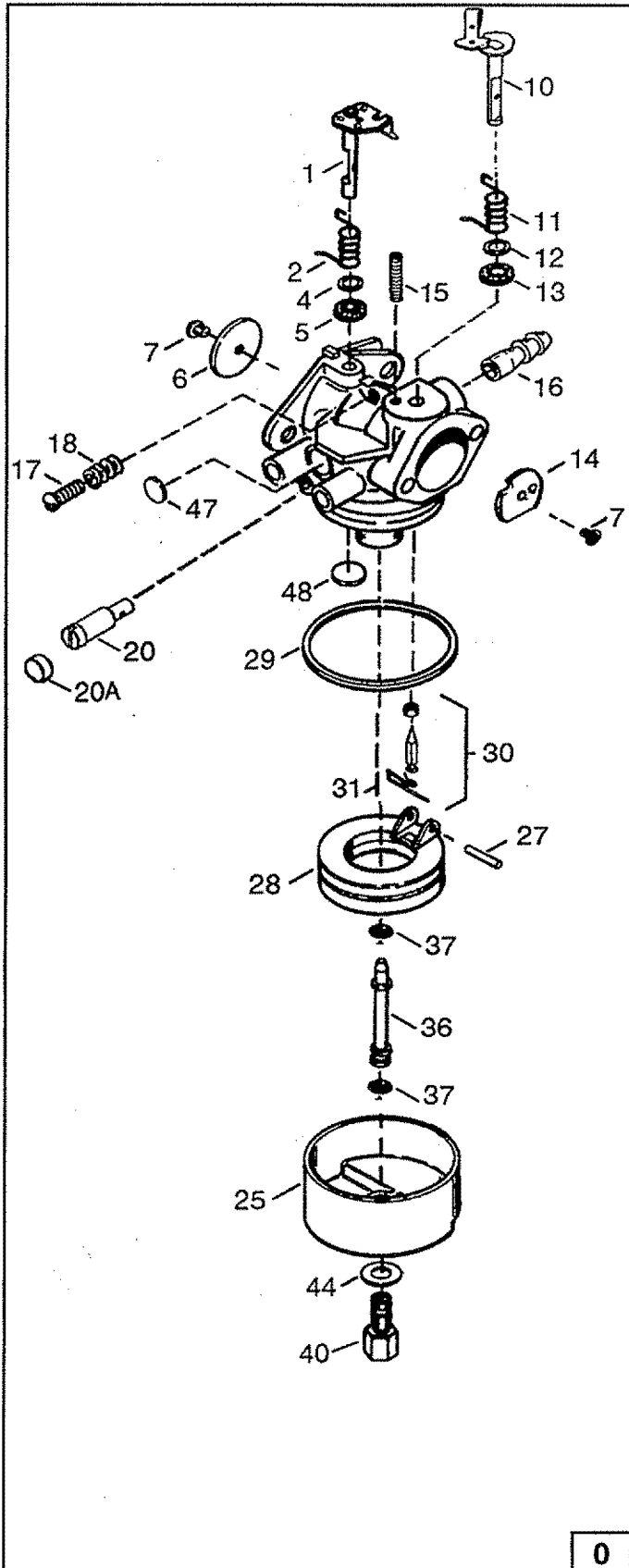


Item	Part #	Qty	Description	Item	Part #	Qty	Description
1	35968A	1	Cylinder (incl. 2, 20 & 72)	18	651028	1	Screw, Torx T-15, 8-32 x 3.8"
2	27652	2	Dowel Pin	20	35319	1	Oil Seal
15	30699C	1	Governor Rod (incl. 15A & 15B)	25	35460	1	Blower Housing Baffle
15A	30700	1	Governor Yoke	25A	36244	1	Air Baffle
15B	650494	1	Screw, 6-40 x 5/16 "	26	650561	2	Screw, 1/4-20 x 5/8"
16	33454A	1	Governor Lever Ass'y.	28	30322	1	Lock Nut, 8-32
17	29916	1	Governor Lever Clamp	30	35441A	1	Camshaft

Tecumseh Engine – 143.981007

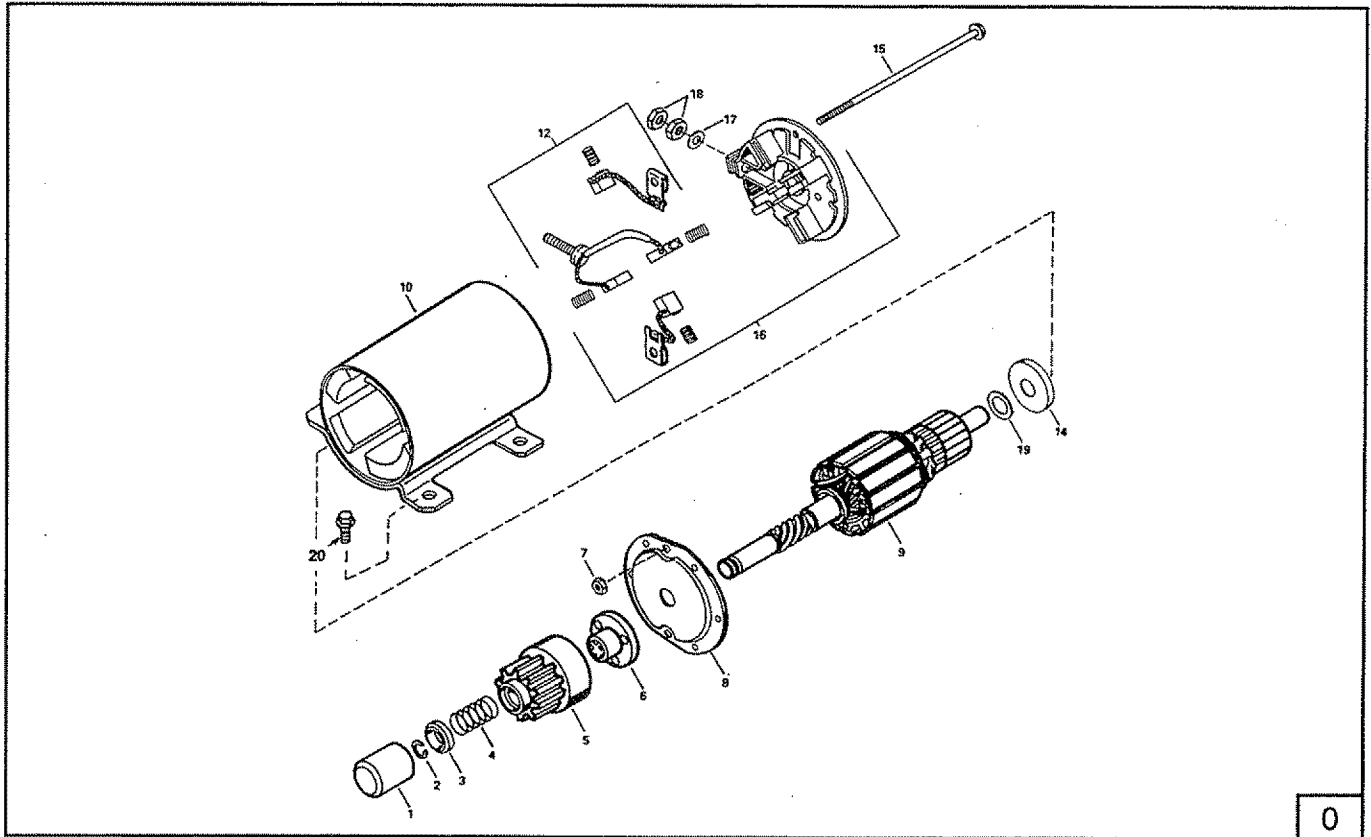
Item	Part #	Qty	Description	Item	Part #	Qty	Description
35	29826	1	Screw, 10-32 x 3/4"	130	650694A	9	Screw, 5/16-18 x 2"
36	29918	1	Lock Washer	130B	651031	1	Screw, 1/4-20 x 9/16"
37	29216	1	Lock Nut, 10-32	135	33636	1	Resistor Spark Plug (RJ17LM)
38	29642	1	Retaining Pin	139	33369	1	Governor Gear Bracket
40	35776A	1	Piston, Pin & Ring Set (Std.)	140	650836	2	Screw, 10-24 x 1/2"
40	35777A	1	Piston, Pin & Ring Set (.010" OS)	149	27882	1	Valve Spring Cap
40	35778A	1	Piston, Pin & Ring Set (.020" OS)	149A	35862	1	Valve Spring Cap
41	35773A	1	Piston & Pin Ass'y (Std.) (Incl. 43)	150	27881	2	Valve Spring
41	35774A	1	Piston & Pin Ass'y (.010" OS) (Incl. 43)	151	32581	2	Valve Spring Keeper
41	35775A	1	Piston & Pin Ass'y (.020") (Incl. 43)	169	27896A	2	Valve Cover Gasket
42	35779	1	Ring Set (Std.)	170	28423	1	Breather Body
42	35780	1	Ring Set (.010" OS)	171	28424	1	Breather Element
42	35781	1	Ring Set (.020" OS)	172	28425	1	Valve Cover
43	35772	2	Piston Pin Retaining Ring	173	36675A	1	Breather Tube
45	36898	1	Connecting Rod Ass'y. (Incl. 47 & 49)	173A	32446	2	Breather Tube Grommet
47	651033	2	Connecting Rod Bolt	174	650128	2	Screw, 10-24 x 1/2"
48	34034	2	Valve Lifter	178	29752	2	Nut & Lock Washer, 1/4-28
49	36896	1	Oil Dipper	182	30088A	2	Screw, 1/4-28 x 1"
50	35375	1	Camshaft (MCR)	184	33263	1	Carburetor to Intake Pipe Gasket
60	33273A	1	Blower Housing Extension	185	33877	1	Intake Pipe
65	650128	1	Screw, 10-24 x 1/2"	207	33878	1	Throttle Link
69	35262A	1	Cylinder Cover Gasket	223	650378	2	Screw, Torx T-30, 5/16-18 x 1-1/8"
70	35376	1	Cylinder Cover (incl. 71, 75 & 80)	224	27915A	1	Intake Pipe Gasket
71	35377	1	Crankshaft Bushing	238	28820	2	Screw, 10-32 x 1/2"
72	27642	2	Oil Pipe Plug	239	27272A	1	Air Cleaner Gasket
75	35319	1	Oil Seal	240	37104	1	Air Cleaner Bracket
80	31845	1	Governor Shaft	242	33267	1	Air Cleaner Bracket
81	30590A	1	Washer	245	33268	1	Air Cleaner Filter
82	35378	1	Governor Gear Ass'y. (Incl. 81)	250	33269A	1	Air Cleaner Cover
83	30588A	1	Governor Spool	251	650513	1	Wing Nut, 1/4-20
84	29193	1	Retaining Ring	260	36243A	1	Blower Housing
86	650833	7	Screw, 1/4-20 x 1-3/16"	261	650788	2	Screw, 5/16-18 x 3/4"
87	650832	1	Screw, 1/4-20 x 1-11/16"	262	29747B	2	Screw, Torx T-40, 5/16-24 x 21/32"
89	32589	1	Flywheel Key	264A	650802	1	Screw, 1/4-20 x 5/8"
90	611091	1	Flywheel	265	33272B	1	Cylinder Head Cover
92	650880	1	Lock Washer	275	34185B	1	Muffler
93	650881	1	Flywheel Nut	276	31588	1	Locking Plate
94	651016	1	Lock Nut, 10-32	277	650729	2	Screw, 5.16-18 x 3-3/16
95	30886A	1	Extension Spring	285	35985B	1	Starter Cup
96	30845A	1	R.P.M. Adjusting Bolt	287	29752	4	Nut & Lock Washer, 1/4-28
100	35135	1	Solid State Ignition	290	30705	1	Fuel Line
101	610118	1	Spark Plug Cover	292	26460	2	Fuel Line Clamp
102	651024	2	Solid State Mounting Stud	311	35941	1	Dipstick (Incl. 312)
103	651007	2	Screw, Torx T-15, 10-24 x 15/16"	312	29673	1	"O" Ring
110	65589	1	Ground Wire	324	33177	1	Terminal
110A	36993	1	Ground Wire	325	29443	1	Wire Clip
111	611206	1	Low Oil Shut-Down Switch (incl. 112)	327	35392	1	Starter Plug
111B	611224	1	Rocker On/Off Switch	342	30063	1	Screw, Torx T-30, 1/4-20 x 1/2"
112	35967	1	Low Oil Shutdown Gasket	361	650990	4	Screw, Torx T-30, 1/4-20 x 15/32"
113	650950	4	Screw, Torx T-25, 10-24 x 5/8"	370G	35274	1	Oil Instruction Decal
119	36451	1	Cylinder Head Gasket	380	640129	1	Carburetor (Incl. 184)
120	36449	1	Cylinder Head	390	590746	1	Rewind Starter
125	27878A	1	Exhaust Valve (Std.) (Incl. 151)	395	36680	1	Electric Starter Motor (12 Volt)
125	27880A	1	Exhaust Valve (1/32" OS) (Incl. 151)	400	36454	1	Gasket Set (Incl. part #'s 27272A (1), 27896A (2), 27915A (1), 29673 (1), 33263 (1), 33629 (1), 34698A (1), 35262 (1), 35317 (1), 36451 (1))
126	34035	1	Intake Valve (Std.) (Incl. 151)	416	34479A	1	Spark Arrestor Kit (Optional)
126	34036	1	Intake Valve (1/32" OS) (Incl. 151)	900	NSP	1	Rep. Short Block 756282B, Order from 71-999
127	650691	9	Washer				
128	650690	9	Belleville Washer				

Tecumseh Engine – 143.981007



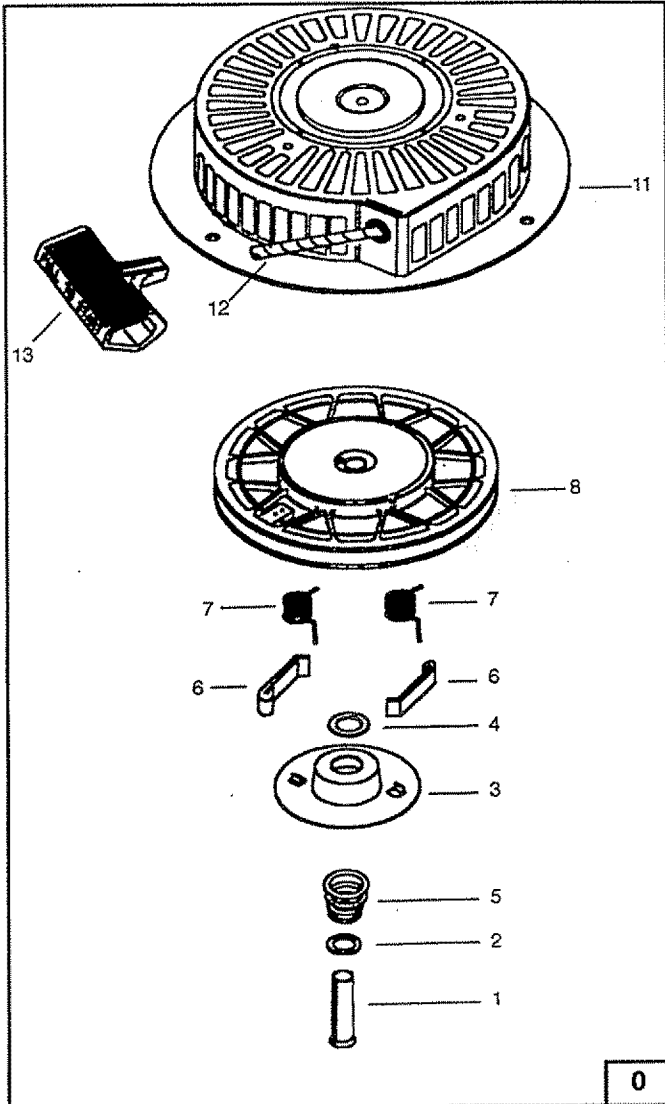
Item	Part #	Qty	Description
0	640129	1	Carburetor (incl. 184 of Engine Parts List)
1	631776A	1	Throttle Shaft & Lever Assembly
2	631970	1	Throttle Return Spring
4	631184	1	Dust Seal Washer
5	631183	1	Dust Seal (Throttle)
6	640109	1	Throttle Shutter
7	650506	2	Shutter Screw
10	632597	1	Choke Shaft and Lever Assembly
11	632043	1	Choke Return Spring
12	631184	1	Dust Seal Washer
13	631183	1	Dust Seal (Choke)
14	631753	1	Choke Shutter
15	630735	1	Choke Positioning Spring
16	632164	1	Fuel Fitting
17	651025	1	Throttle Crack Screw/Idle Speed Screw
18	630766	1	Tension Spring
20	640027	1	Idle Restrictor Screw
20A	640053	1	Idle Restrictor Screw Cap
25	631867	1	Float Bowl
27	631024	1	Float Shaft
28	632019	1	Float
29	631028	1	Float Bowl "O" Ring
30	631021	1	Inlet Needle, Seat & Clip (Incl. 31)
31	631022	1	Spring Clip
36	640113	1	Main Nozzle Tube
37	632547	2	"O" Ring, Main Nozzle Tube
40	640114	1	High Speed Bowl Nut
44	27110	1	Bowl Nut Washer
47	630748	1	Welch Plug, Idle Mixture Well
48	631027	1	Welch Plug, Atmospheric Vent

Tecumseh Engine – 143.981007



Item	Part #	Qty	Description
0	36680	1	Electric Starter
1	33451	1	Dust Cover
2	33842	1	Retainer Ring
3	33430	1	Spring Retainer
4	33854	1	Anti-Drift Spring
5	33432	1	Gear
6	35893	1	Nut and Retainer Ring (incl. 2)
7	33450	2	Lock Nut
8	35894	1	Drive End Cap Ass'y
9	35895	1	Armature
10	36699	1	Housing Ass'y
12	35896	1	Brush and Spring Kit
14	35897	1	Thrust Washer
15	35898	2	Bolt, 10-32 x 4-11/64"
16	35899	1	End Cap & Brush Card Ass'y. (incl. 12, 14, 17, 18)
17	650168	1	Washer
18	650864	2	Nut
20	650990	4	Screw, Torx T-30, 1/4-20 x 15/32"

Tecumseh Engine – 143.981007



Item	Part #	Qty	Description
0	590746	1	Recoil Starter
1	590599A	1	Spring Pin (incl. 4)
2	590600	1	Washer
3	590679	1	Retainer
4	590601	1	Washer
5	590678	1	Brake Spring
6	590680	2	Starter Dog
7	590412	2	Dog Spring
8	590681	1	Pulley & Rewind Spring Assembly
11	590747	1	Starter Housing Assembly
12	590535	1	Starter Rope
13	590701	1	Starter Handle

For California residents only when seeking service in California.

CALIFORNIA EMISSION CONTROL WARRANTY STATEMENT

YOUR WARRANTY RIGHTS AND OBLIGATIONS

The California Air Resources Board ("CARB") and Sears Roebuck and Co., USA, are pleased to explain the Emission Control System Warranty on your 1995 and later lawn and garden equipment engine. In California new utility and lawn and garden equipment engines must be designed, built and equipped to meet the State's stringent anti-smog standards. Sears must warrant the emission control system on your lawn and garden equipment engine for the periods of time listed below provided there has been no abuse, neglect, or improper maintenance of your lawn and garden equipment engine.

Your emission control system includes parts such as the carburetor and the ignition system.

Where a warrantable condition exists, Sears will repair your lawn and garden equipment engine at no cost to you. Expenses covered under warranty include diagnosis, parts, and labor.

MANUFACTURER'S WARRANTY COVERAGE

The 1995 and later utility and lawn and garden equipment engines are warranted for two years. If any emission related part on your engine (as listed below) is defective, the part will be repaired or replaced by Sears.

OWNER'S WARRANTY RESPONSIBILITIES

As the lawn and garden equipment engine owner, you are responsible for the performance of the required maintenance listed in your owners manual. Sears recommends that you retain all receipts covering maintenance on your lawn and garden equipment engine, but Sears cannot deny warranty solely due for the lack of receipts or for your failure to ensure the performance of all scheduled maintenance.

As the lawn and garden equipment engine owner, you should be aware that Sears may deny you warranty coverage if your lawn and garden equipment engine or a part of it has failed due to abuse, neglect, improper maintenance, unapproved modifications, or the use of parts not made or approved by the original equipment manufacturer.

You are responsible for presenting your lawn and garden equipment engine to a Sears authorized repair center as soon as a problem exists. Warranty repairs should be completed in a reasonable amount of time, not to exceed 30 days.

If you have any questions regarding your warranty rights and responsibilities, you should contact your nearest authorized service center or call Sears at 1-800-473-7247.

WARRANTY COMMENCEMENT DATE

The warranty period begins on the date the lawn and garden equipment engine is delivered.

LENGTH OF COVERAGE

Sears warrants to the initial owner and each subsequent purchaser that the engine is free from defects in materials and workmanship which cause the failure of a warranted part for a period of two years.

WHAT IS COVERED

REPAIR OR REPLACEMENT OF PARTS

- Repair or replacement of any warranted part will be performed at no charge to the owner at an approved Sears servicing center.
- If you have any questions regarding your warranty rights and responsibilities, you should contact your nearest authorized service center or call Sears at 1-800-473-7247.

WARRANTY PERIOD

Any warranted part which is not scheduled for replacement as required maintenance, or which is scheduled only for regular inspection to the effect of "repair or replace as necessary" shall be warranted for 2 years. Any warranted part which is scheduled for replacement as required maintenance shall be warranted for the period of time up to the first scheduled replacement point for that part.

DIAGNOSIS

The owner shall not be charged for diagnostic labor which leads to the determination that a warranted part is defective if the diagnostic work is performed at an approved Sears servicing center.

CONSEQUENTIAL DAMAGES

Sears may be liable for damages to other engine components caused by the failure of a warranted part still under warranty.

WHAT IS NOT COVERED

All failures caused by abuse, neglect, or improper maintenance are not covered.

ADD-ON OR MODIFIED PARTS

The use of add-on or modified parts can be grounds for disallowing a warranty claim. Sears is not liable to cover failures of warranted parts caused by the use of add-on or modified parts.

HOW TO FILE A CLAIM

If you have any questions regarding your warranty rights and responsibilities, you should contact your nearest authorized service center or call Sears at 1-800-473-7247.

WHERE TO GET WARRANTY SERVICE

Warranty services or repairs shall be provided at all Sears authorized service centers.

MAINTENANCE, REPLACEMENT AND REPAIR OF EMISSION RELATED PARTS

Any Sears approved replacement part used in the performance of any warranty maintenance or repair on emission related parts will be provided without charge to the owner if the part is under warranty.

EMISSION CONTROL WARRANTY PARTS LIST

1. Carburetor Assembly
2. Ignition System
 - a. Spark Plug, covered up to maintenance schedule.
 - b. Ignition Module
3. Crankcase Breather Tube
4. Exhaust Manifold

For in-home major brand repair service:

Call 24 hours a day, 7 days a week

1-800-4-MY-HOMESM (1-800-469-4663)

Para pedir servicio de reparación a domicilio – 1-800-676-5811

In Canada for all your service and parts needs call – **1-800-665-4455**
Au Canada pour tout le service ou les pièces

For the repair or replacement parts you need:

Call 7 am – 7 pm, 7 days a week

1-800-366-PART (1-800-366-7278)

Para ordenar piezas con entrega a domicilio – 1-800-659-7084

For the location of a Sears Parts and Repair Center in your area:

Call 24 hours a day, 7 days a week

1-800-488-1222

**For information on purchasing a Sears Maintenance Agreement
or to inquire about an existing Agreement:**

Call 9 am – 5 pm, Monday – Saturday

1-800-827-6655



The Service Side of SearsSM