

CRAFTSMAN®

AssureLink™

Garage Door Opener Smartphone Control Kit # 53999

Open. Close. From Anywhere.*

Get peace of mind. Control your garage door with your smartphone using AssureLink™ connectivity.**

AssureLink™

GARAGE DOOR OPENER SMARTPHONE CONTROL KIT

**NO
MONTHLY
FEES**
FREE APP
AssureLink

- ▶ Open/Close Your Garage Door from Anywhere with Your Smartphone for Peace of Mind, Security and Convenience
- ▶ Get Automatic Alerts if Your Garage Door is Open
- ▶ Free App, No Service Fees
- ▶ Installs in Minutes, Quick and Easy Setup
- ▶ Works with Craftsman® Openers Made in 1998 or After**



AssureLink Gateway



Motion-Detecting Control Console

* Continuous internet connection required.

** Excludes Craftsman AssureLink Garage Door Openers model numbers 3043 and 30437.

Included: AssureLink Gateway with Ethernet Cable, Power Cord and Motion-Detecting Control Console

System Requires: Web-Enabled Smartphone • Personal Computer with Continuous Home Internet Connection • Internet Router



Watch the video
Text GARAGE to
73277

© 2014 Sears, Roebuck and Company. All rights reserved. Sears and Craftsman are trademarks of Sears, Roebuck and Company. AssureLink is a trademark of Sears, Roebuck and Company.

SEARS MOBILE

CRAFTSMAN®

AssureLink™

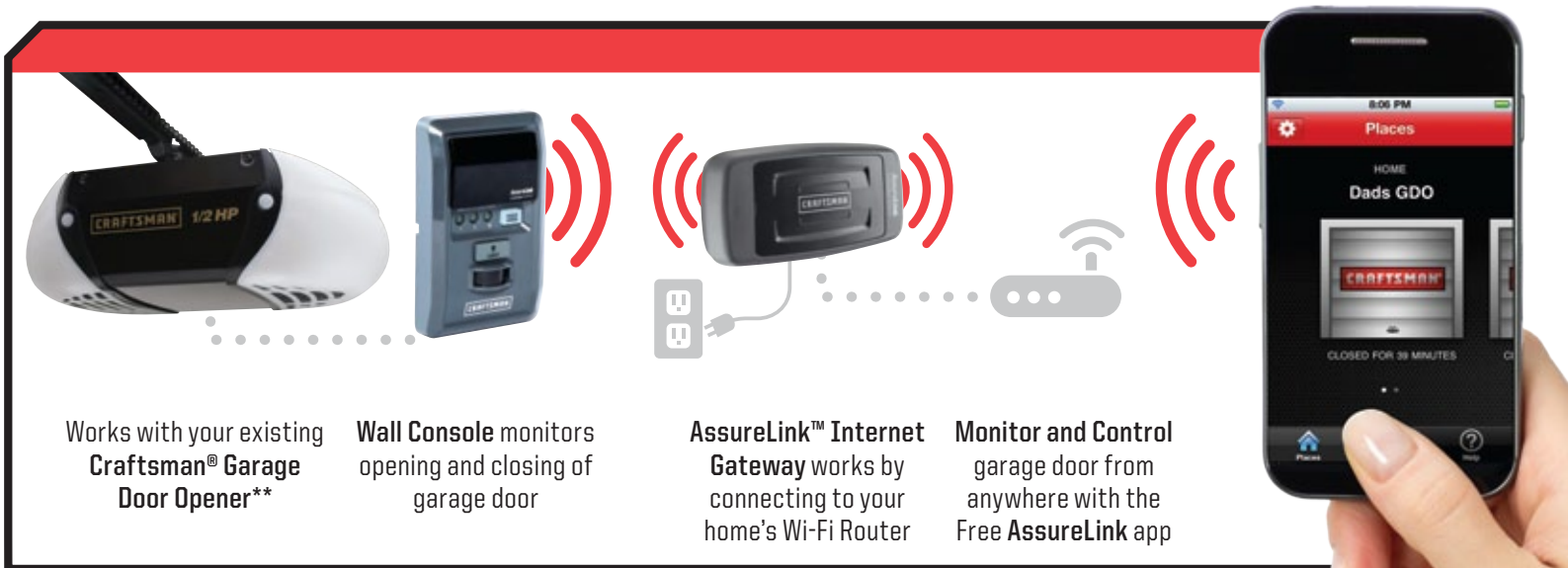
Garage Door Opener Smartphone Control Kit # 53999

**NO
MONTHLY
FEES**
FREE APP
AssureLink.

Peace of mind, in the palm of your hand.

Control your garage door with your smartphone using AssureLink™ connectivity.*

HOW IT WORKS



Works with your existing Craftsman® Garage Door Opener**

Wall Console monitors opening and closing of garage door

AssureLink™ Internet Gateway works by connecting to your home's Wi-Fi Router

Monitor and Control garage door from anywhere with the Free AssureLink app

AssureLink™

Open/Close Your Garage Door From Anywhere*

- Provides peace of mind, added security and convenience

Monitor and Control

- Monitor and operate your garage door and/or AssureLink enabled lighting accessories from anywhere
- Works with your web-enabled smartphone, cell phone, laptop, or tablet

Set and Receive Automatic Alerts on your Smartphone if Your Garage Door is Open - Anytime, Anywhere

- Receive instant notification via email message and/or smartphone push notification
- Multiple alerts can be configured at one time and customized based on your needs

Additional Features

- Timer-to-Close - setting to automatically close the garage door after 1, 5, or 10 minutes
- Motion-Detecting Sensor - turns on the garage door open lights when motion is detected
- Remote Lockout - added safety while you are away

Quick and Easy Setup, in Minutes!

- Simply replace the wall control of Your Craftsman Garage Door Opener
- Connect the Gateway to your internet router, setup your account online, download FREE apps for iPhone® or Android™, or access your account via the AssureLink webpage.

* Continuous internet connection required.

** Excludes Craftsman AssureLink Garage Door Openers model numbers 3043 and 30437.

CRAFTSMAN®**AssureLink™****Garage Door Opener Smartphone Control Kit # 53999**

Open. Close. From Anywhere.*

Always know the status of your Garage Door - anywhere, anytime.

GARAGE DOOR OPENER SMARTPHONE CONTROL KIT #53999



Works with your existing Craftsman® Garage Door Opener**



Wall Console monitors opening and closing of garage door



AssureLink™ Internet Gateway works by connecting to your home's Wi-Fi Router



Monitor and Control garage door from anywhere with the Free AssureLink app



NO MONTHLY FEES
FREE APP
AssureLink

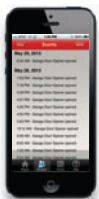
AssureLink™

- ▶ Open/Close Your Garage Door and AssureLink Lighting Accessories from Anywhere with Your Smartphone for Peace of Mind, Security and Convenience
- ▶ Get Automatic Alerts if Your Garage Door is Open
- ▶ Free App, No Service Fees
- ▶ Installs in Minutes, Quick and Easy Setup
- ▶ Works with Craftsman Openers Made in 1998 or After**



Receive an alert notice via push message or email if ...

- Your garage door opener is left open for a certain amount of time
- You left lights on in your home



View and monitor your alert history at all times

- See history on the last 10 alerts sent
- Disable/enable rules without losing them



Setup alerts the way you like

- Set up to three alert rules at one time
- Customize alerts the way you like - specific days and/times of the week
- Customize the alert status - door is opened or door is left opened for specified amount of time



AssureLink App

- Security enhanced/password protected
- Allow access and control to those you trust
- Easy-to-read colorful icons provide status of all your AssureLink enabled devices

* Continuous internet connection required.

** Excludes Craftsman AssureLink Garage Door Openers model numbers 3043 and 30437.

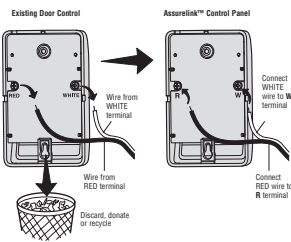
Included: AssureLink Gateway with Ethernet Cable, Power Cord and Motion-Detecting Control Console

System Requires: Web-Enabled Smartphone • Personal Computer with Continuous Home Internet Connection • Internet Router

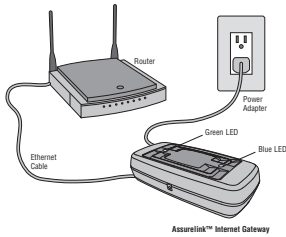
Garage Door Opener Smartphone Control Kit Quick Setup Reference

Installation Steps

Step 1 - Install the AssureLink™ Wall Control



Step 2 - Connect the AssureLink Internet Gateway

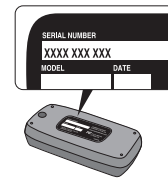


Step 3 - Create a FREE Account from your computer at:

craftsman.com/assurelink



Step 4 - Register the AssureLink Internet Gateway



Step 5 - Download FREE Smartphone app for iPhone® at Apple App Store® or for Android™ at Google Play™



Garage Door Opener Compatibility Chart



Black Button Remote (Full Compatibility)

Model# 53753

Compatible Garage Door Openers - Model #'s

53648D, 53910D, 53915D, 53918D, 53919D, 53920D, 53925D, 53930D, 53939D, 53985D, 53985DM, 53990D, 53992D, 53993D, 53997D, 53998D



Blue Button Remote

Model# 53681

5364811, 5364812, 53914, 53914D, 53919, 53924, 53927LP, 53954, 53961, 53962, 53963, 53964, 53965, 53966, 53975, 53976, 53978, 53977SRT, 5399011, 53980, 53982, 53985, 5398511, 53989, 53990, 53991, 53992, 5399211, 53995



Grey Button Remote

Model# 53879

53959, 53960, 53968, 53970, 53971, 53973

Where to Locate Model Number



To determine the model number of your Craftsman Garage Door, release the tab on one or both light lens covers and look for the product identification tag labeled **CRAFTSMAN RESIDENTIAL DOOR OPENER**. Then locate the model number.

Watch the video
Text GARAGE to
73277

This and any other video apply. View our Terms & Conditions and Privacy Policy at www.craftsman.com/assurelink

sears MOBILE