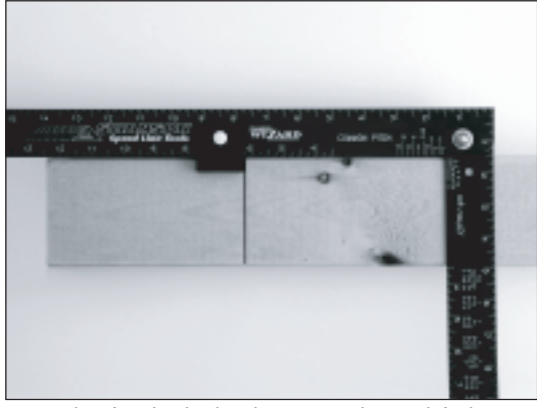


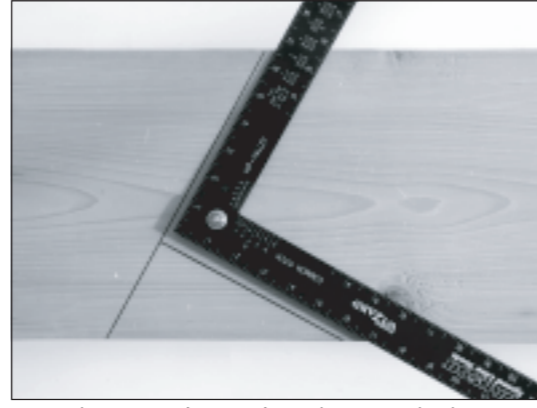
OTHER SIMPLE USES: 3



Use the included tab to mark multiple blocks quickly and consistently.

19

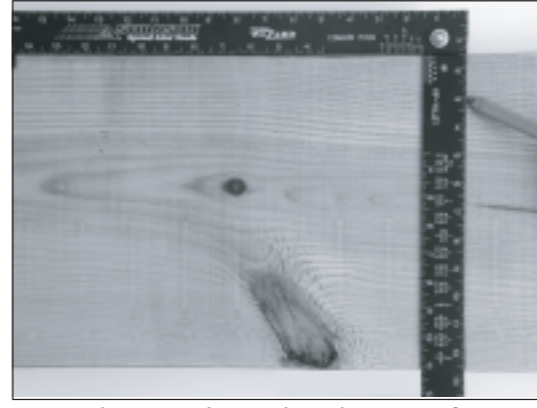
COMMON RAFTER LAYOUT: 2



Use the Framing Wizard to mark the rafter seat pitch and plumb height.

4

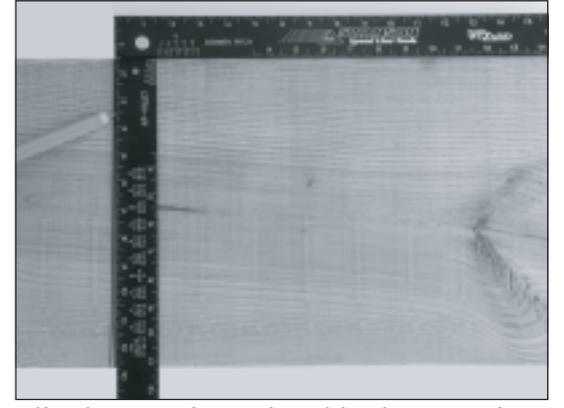
ADJUSTING BACK TO SQUARE: 1



Open the Framing Wizard arm as far as possible, place on a wide board and draw a single line.

11

ADJUSTING BACK TO SQUARE: 2



Flip the Framing Wizard in the opposite direction, align the top of the arm to the first line and draw a second line.

12

20

Quickly find an existing pitch by using a level.



OTHER SIMPLE USES: 4

3

Simply adjust arm edge until it aligns with the desired common pitch on the scale. The picture above is a 10 common pitch.



COMMON RAFTER LAYOUT: 1



 The Folding Framing Square

 Presents

 The....



Swanson Tool Co., Inc.
 211 Ontario Street
 Frankfort, Illinois 60423
 Phone: 815.469.9453
 Fax: 815.469.4575
www.swansontoolco.com

OTHER SIMPLE USES: 7



Find angles and cut siding accurately so the finished work will look great.

23

TABLE OF CONTENTS

16" On Center Layout	1
12" On Center Layout	2
Common Rafter Layout	3
Hip/Valley Rafter Layout	5
Using the Chart	9
Adjusting Back To Square	11
Adjusting Arm Tension	16
Other Simple Uses	17



DISCLAIMER: Swanson Tool Co., Inc. is not responsible for any omissions that may occur in the production of this reference book.

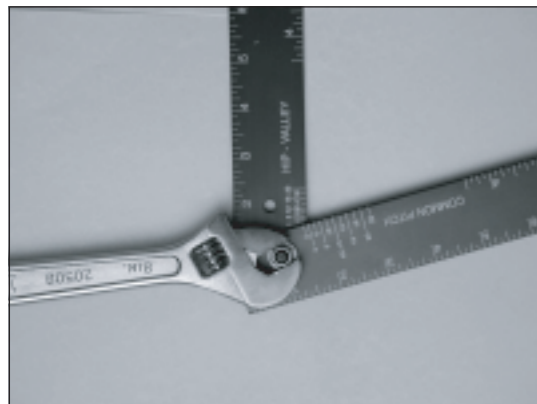
© 2002 Swanson Tool Co., Inc.

Swanson's Limited Warranty

LIMITED WARRANTY: Swanson Tool Co., Inc. warrants its products to be free from defects in material and workmanship for 1 year from the date of original purchase. Swanson's only liability under this limited warranty shall be at our option to repair or replace any product determined by Swanson to be defective. No damages or other remedies available.

16

The amount of tension applied to the arm can be adjusted by simply turning the lock nut, which holds the arm in place.



ADJUSTING THE ARM TENSION

7

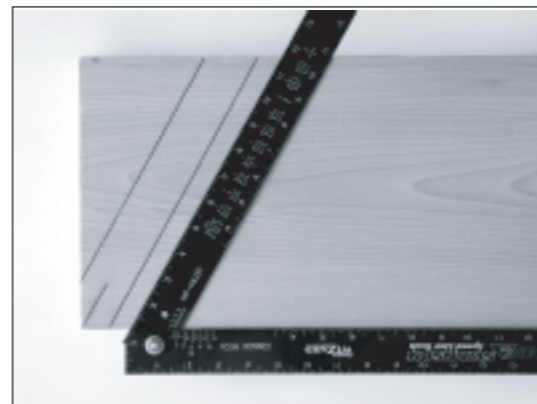
Next, align the center of the hole in the arm over and the single short line as shown.



HIP/VALLEY RAFTER LAYOUT: 3

8

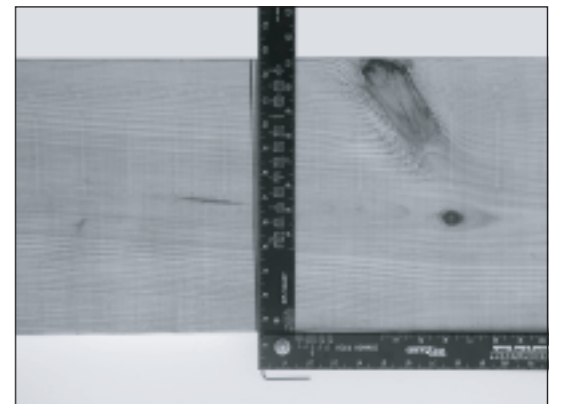
Mark both sides of arm for the double 45-degree bevel cuts.



HIP/VALLEY RAFTER LAYOUT: 4

15

Tighten or loosen the setscrew to adjust the arm until it is centered between the two lines drawn. The Framing Wizard is now square.



ADJUSTING BACK TO SQUARE: 5