

Repair Parts Manual



Z7400 ZERO TURN MOWER

26 HP* 54" Mower

Model No.
917.204170

**as rated by the manufacturer*

For answers to your
questions about this product

Call:

1-800-659-5917

Sears Craftsman Help Line

5 am - 5 pm, Mon - Sat

Visit our Craftsman website:

www.sears.com/craftsman



WARNING! This mower is equipped with an internal combustion engine and should not be used on or near any unimproved forested, bush covered or grassy lands unless the engine's system is equipped with a spark arrestor meeting applicable local or state laws (if any).

In the state of California the above is required by law (Section 4442 of the California Public Resources Code).

Other states may have similar laws. Federal laws apply on federal lands.

A spark arrestor for the muffler is available through any authorized Sears service center.

REPAIR PROTECTION AGREEMENTS

Congratulations on making a smart purchase. Your new Craftsman® product is designed and manufactured for years of dependable operation. But like all products, it may require repair from time to time. That's when having a Repair Protection Agreement can save you money and aggravation.

Purchase a Repair Protection Agreement. now and protect yourself from unexpected. hassle and expense.

Here's what's included in the Agreement:

- **Expert service** by our 12,000 professional repair specialists.
- **Unlimited service and no charge** for parts and labor on all covered repairs.
- **Product replacement** if your covered product can't be fixed.
- **Discount of 10%** from regular price of service and service-related parts not covered by the agreement; also, 10% off regular price of preventive maintenance check.
- **Fast help by phone** – phone support from a Sears representative on products requiring in-home repair, plus convenient repair scheduling.

Once you purchase the Agreement, a simple phone call is all that it takes for you to schedule service. You can call anytime day or night, or schedule a service appointment online.

Sears has over 12,000 professional repair specialists, who have access to over 4.5 million quality parts and accessories. That's the kind of professionalism you can count on to help prolong the life of your new purchase for years to come. Purchase your Repair Protection Agreement today!

Some limitations and exclusions apply.

For prices and additional information call

1-800-827-6655.

SEARS INSTALLATION SERVICE

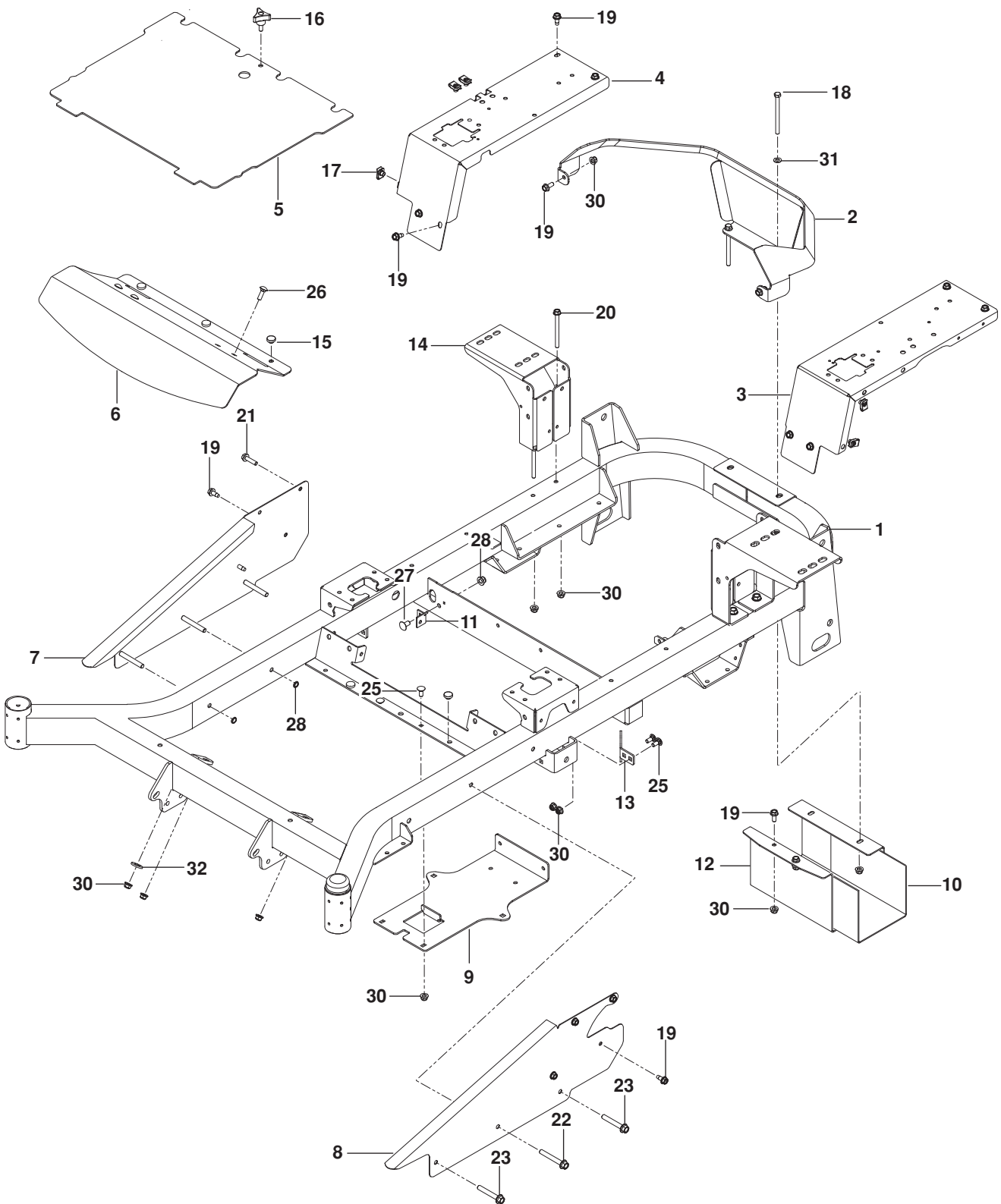
*For Sears professional installation of home appliances, garage door openers, water heaters, and other major home items, in the U.S.A. call **1-800-4-MY-HOME®***

CONTENTS

FRAME.....	4
ENGINE PLATE.....	6
ENGINE	
Crankcase	8
Oil Pan	10
Cylinder Head	12
Ignition.....	14
Housing	16
Fuel System	18
STEERING	20
IGNITION.....	22
PARK BRAKE.....	24
HYDRAULIC PUMP-MOTOR.....	26
WHEELS	28
MOWER LIFT / DECK LIFT	30
MOWER DECK / CUTTING DECK.....	32
SEAT	34
DECALS.....	36

NOTE: ALL FASTENERS ARE GRADE 5 UNLESS OTHERWISE SPECIFIED.

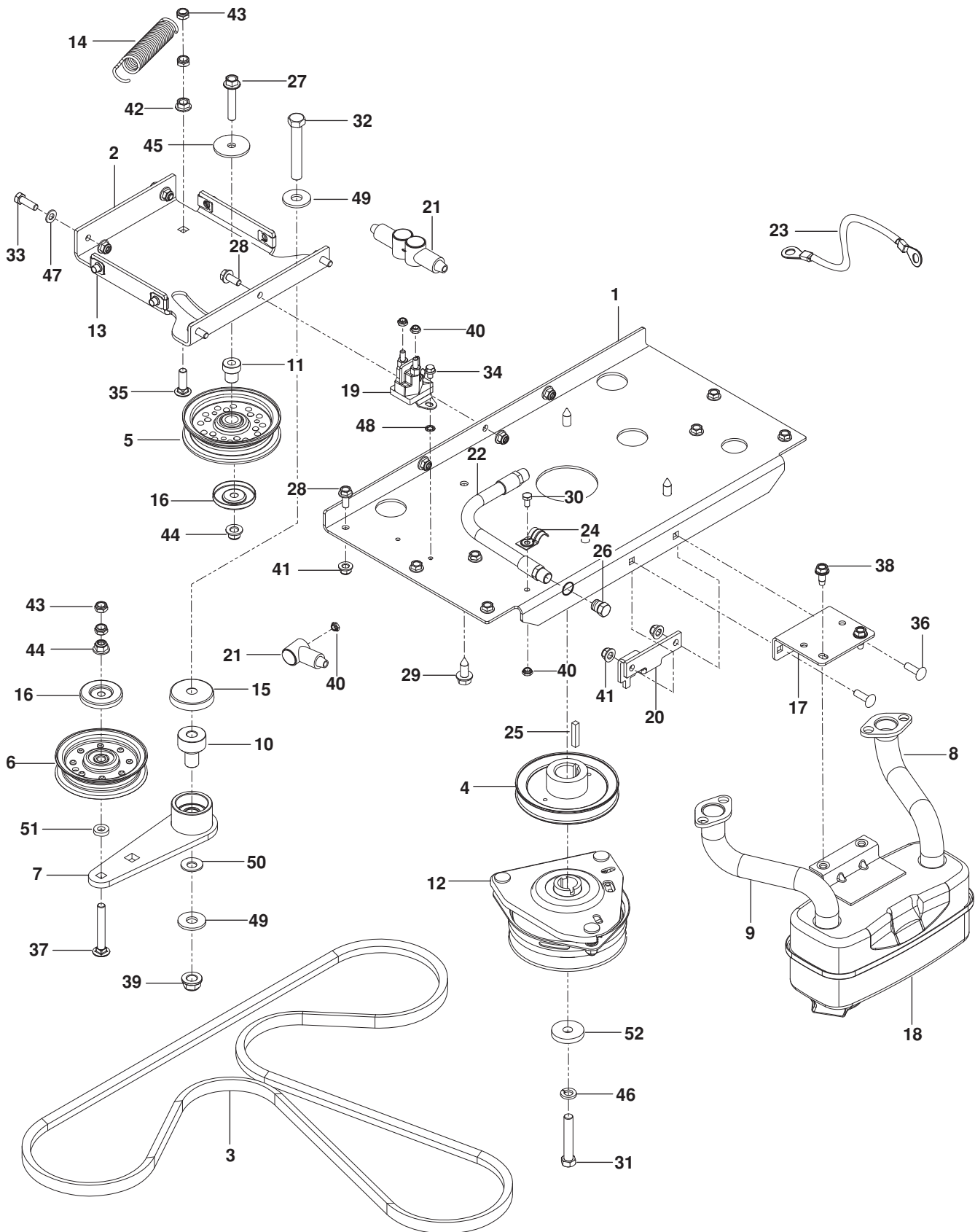
FRAME
917.204170



FRAME

ITEM	PART NO.	QTY.	DESCRIPTION	ITEM	PART NO.	QTY.	DESCRIPTION
1..	576 69 49-05.....	2	FRAME, BLK	17..	539 10 47-63.....	8	RETAINER, U TYPE ⁵ / ₁₆ -18
2..	575 34 84-04.....	1	GUARD, REAR BLK	18..	539 10 23-35.....	2	HCS ⁵ / ₁₆ -18 X 4
3..	577 25 68-05.....	1	PANEL, LT BLK	19..	817 49 05-12... 18....		BOLT ⁵ / ₁₆ -18 x ³ / ₄ THD FRM
4..	577 25 69-05.....	1	PANEL, RT BLK	20..	539 13 17-80.....	4	HHFS ⁵ / ₁₆ -18 x 3 ³ / ₄
5..	586 40 01-01.....	1	PLATE w/ SAFTY DECAL BLK	21..	525 54 40-01.....	1	HHFS ⁵ / ₁₆ -18 x 1 ¹ / ₄ TPBLT
6..	586 43 22-02.....	1	PLATE, FOOTREST BLK	22..	874 49 06-44.....	2	HHFS ³ / ₈ -16 x 2 ³ / ₄
7..	586 43 21-02.....	1	SIDE, RT BLK	23..	539 13 30-06.....	4	HHFS ³ / ₈ -16 x 2 ¹ / ₂
8..	586 43 20-02.....	1	SIDE, LT BLK	24..	539 10 91-00.....	2	RHSNB ³ / ₈ -16 x ³ / ₄
9..	575 01 72-02.....	1	PLATE, BATTERY, BLK	25..	539 99 03-16.....	6	RHSNB ⁵ / ₁₆ -18 x ³ / ₄
10..	539 13 28-59.....	1	SHIELD, HEAT	26..	539 99 02-08.....	3	RHSNB ⁵ / ₁₆ -18 x 1
11..	575 24 52-02.....	2	BRACKET, DAMPENER	27..	539 10 91-00.....	2	RHSNB ³ / ₈ -16 x ³ / ₄
12..	575 23 04-02.....	1	SHIELD, MUFFLER BLK	28..	521 99 65-01.....	2	NUT ³ / ₈ -16 HEX FLG NYLOC
13..	505 25 64-01.....	2	STOP, DECK	29..	539 20 02-82.....	6	NUT ³ / ₈ -16 HEX JAM NYLOC
14..	575 53 36-02.....	2	MOUNT, TANK BLK	30..	539 11 28-99.....	6	NUT ⁵ / ₁₆ -18 HEX FLG NYLOC
15..	539 10 25-87.....	5	BUMPER	31..	819 11 11-16.....	2	WASHER ⁵ / ₁₆ SAE FLT
16..	539 10 44-11.....	1	KNOB w/ STUD	32..	539 99 02-50.....	1	WASHER

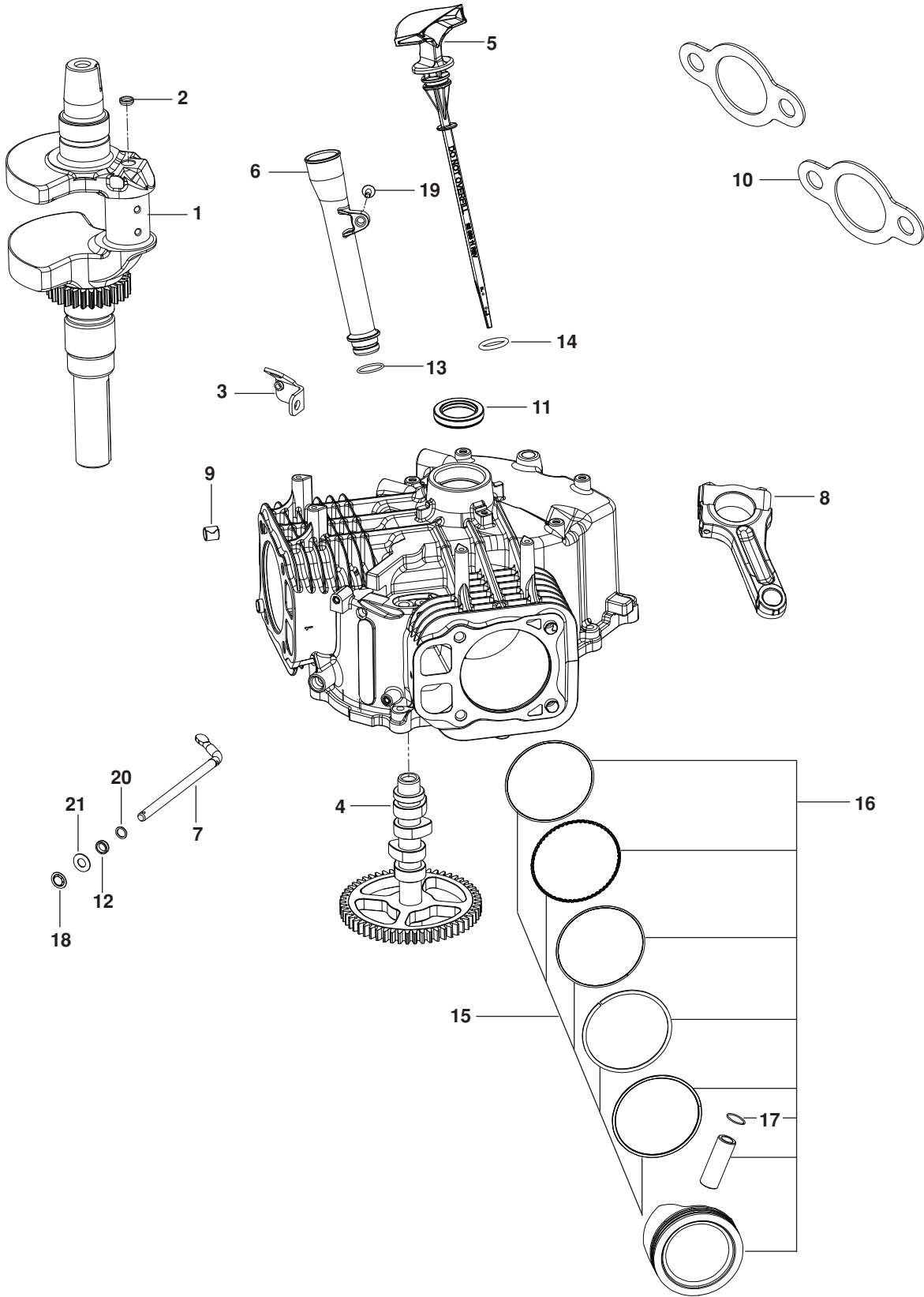
ENGINE PLATE 917.204170



ENGINE PLATE

ITEM	PART NO.	QTY.	DESCRIPTION	ITEM	PART NO.	QTY.	DESCRIPTION
1..	574 84 63-02.....	1	PLATE, ENGINE BLK	29..	817 12 06-16.....	4	HHFS $\frac{3}{8}$ -16 x 1 THD FRM
2..	574 84 64-02.....	1	PLATE, IDLER SUPPORT BLK	30..	539 99 00-71.....	1	HCS $\frac{1}{4}$ -20 x $\frac{1}{2}$
3..	574 87 09-01.....	1	BELT, HYDRO	31..	581 33 28-02.....	1	HCS $\frac{7}{16}$ -20 x $2\frac{1}{2}$
4..	585 81 37-01.....	1	PULLEY	32..	539 10 34-33.....	1	HCS $\frac{1}{2}$ -13 x $3\frac{1}{4}$
5..	539 97 66-88.....	1	PULLEY, IDLER	33..	539 99 02-09.....	2	HCS $\frac{5}{16}$ -18 x 1
6..	539 10 76-20.....	1	PULLEY, IDLER SECONDARY	34..	539 99 03-02.....	2	SCREW $\frac{1}{4}$ -20 x $\frac{3}{8}$ THD FRM
7..	510 04 16-03.....	1	ARM, IDLER w/ BEARINGS	35..	539 10 04-13.....	1	RHSNB $\frac{3}{8}$ -16 x $1\frac{1}{4}$
8..	583 95 48-01.....	1	EXHAUST TUBE, RT	36..	539 10 72-71.....	2	RHSNB $\frac{5}{16}$ -18 x 1
9..	583 95 45-01.....	1	EXHAUST TUBE, LT	37..	539 13 02-35.....	1	RHSNB $\frac{3}{8}$ -16 x $2\frac{3}{4}$
10..	510 20 63-01.....	1	PIVOT, BEARING	38..	539 10 74-75.....	2	BOLT $\frac{5}{16}$ -18 x $\frac{3}{4}$ THD FRM
11..	525 43 56-01.....	1	PIVOT, IDLER	39..	521 99 11-01.....	1	NUT $\frac{1}{2}$ -13 FLG NYLOC
12..	532 17 93-35.....	1	CLUTCH	40..	539 10 81-20.....	4	NUT $\frac{1}{4}$ -20 THIN NYLOC
13..	539 10 47-63.....	4	RETAINER, U TYPE	41..	539 11 28-99... 15.....	15	NUT $\frac{5}{16}$ -18 HEX FLG NYLOC
14..	510 25 44-01.....	1	SPRING, PUMP	42..	539 99 06-13.....	1	NUT $\frac{3}{8}$ -16 WHIZLK
15..	539 11 46-62.....	1	SHIELD, DUST	43..	539 20 02-82.....	4	NUT $\frac{3}{8}$ -16 JAM NYLOC
16..	510 25 45-01.....	2	SHIELD, DUST	44..	521 99 65-01.....	2	NUT $\frac{3}{8}$ -16 FLG NYLOC
17..	575 22 99-02.....	1	BRACKET, MUFFLER BLK	45..	539 11 18-97.....	1	WASHER $\frac{3}{8}$ SPECIAL
18..	539 13 16-04.....	1	MUFFLER	46..	539 99 02-47.....	1	WASHER $\frac{7}{16}$ SLW
19..	532 19 25-07.....	1	SOLENOID	47..	539 99 01-88.....	2	WASHER $\frac{5}{16}$ SAE
20..	585 81 36-01.....	1	STOP, CLUTCH	48..	539 99 00-53.....	1	WASHER $\frac{1}{4}$ INT TOOTH LK
21..	532 13 15-63.....	3	INSULATOR	49..	539 10 95-54.....	2	WASHER $\frac{1}{2}$
22..	584 82 55-01.....	1	HOSE, DRAIN	50..	539 11 55-28.....	1	WASHER $\frac{1}{2}$ BELLEVILLE
23..	539 10 27-57.....	1	CABLE, POSITIVE	51..	539 10 95-62.....	1	WASHER $\frac{3}{8}$
24..	539 10 13-63.....	1	CLAMP	52..	539 10 65-04.....	1	WASHER, HARDEN
25..	539 91 27-57.....	1	KEY $\frac{1}{4}$ SQ x $1\frac{1}{4}$	NOT SHOWN			
26..	585 80 71-01.....	1	PLUG, OIL DRAIN	532 19 83-16.....	1	ADAPTER, CLUTCH	
27..	874 49 06-32.....	1	HHFS $\frac{3}{8}$ -16 x 2				
28..	874 49 05-12... 11.....	11	HHFS $\frac{5}{16}$ -18 x $\frac{3}{4}$				

ENGINE
917.204170
Crankcase



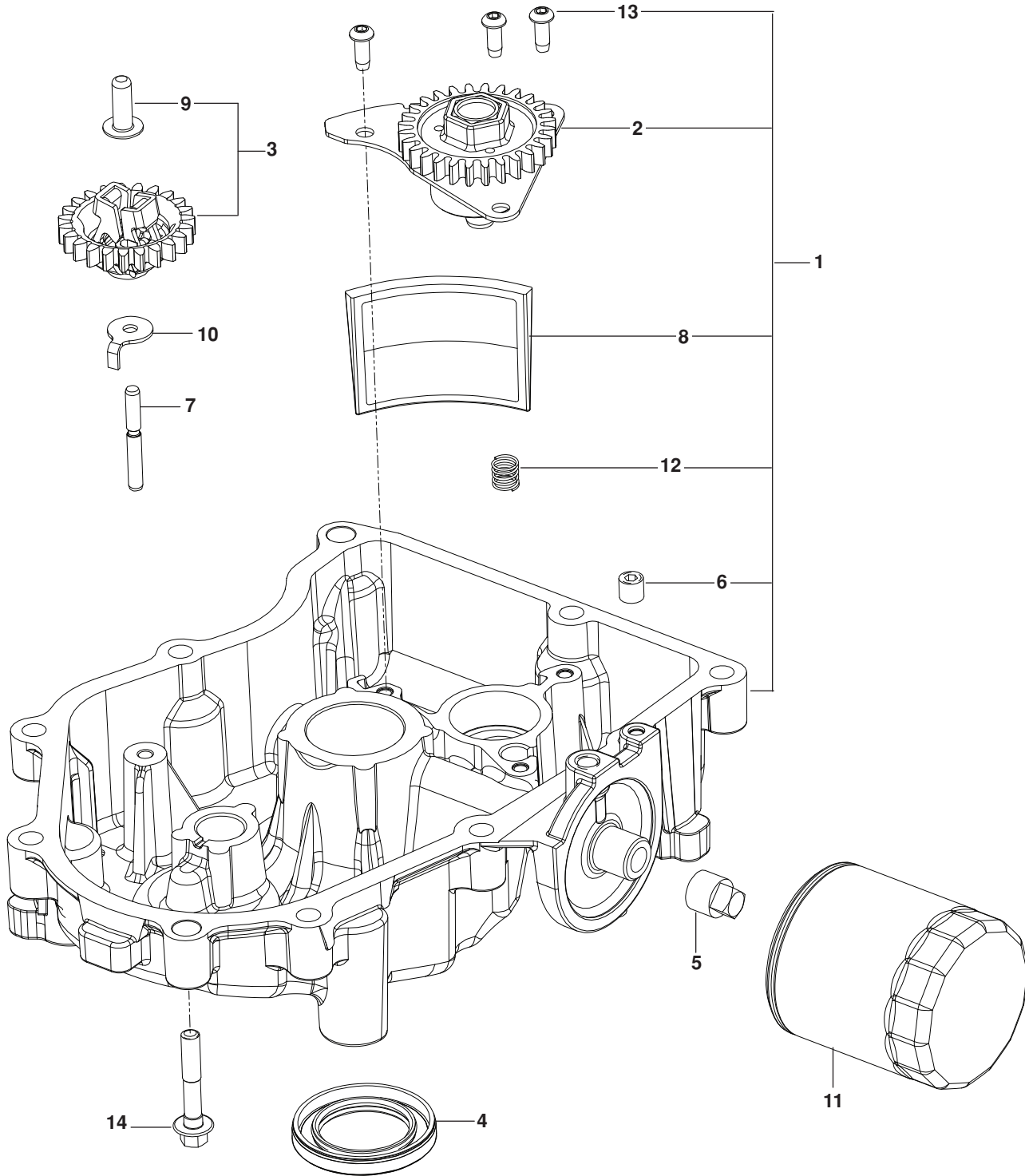
ENGINE

Kohler Engine - PS-KT745-3042

ITEM	PART NO.	QTY.	DESCRIPTION
1..	16 014 11-S	1	CRANKSHAFT ASSY
2..	52 139 09-S	1	PLUG, CUP
3..	24 126 243-S	1	LIFTING STRAP
4..	32 010 07-S	1	CAMSHAFT ASSY
5..	32 038 12-S	1	DIPSTICK ASSY
6..	32 123 14-S	1	TUBE ASSY, OIL FILL
7..	24 144 38-S	1	SHAFT, CROSS
8..	24 067 28-S	2	ROD, ASSY CONNECTING
9..	24 380 16-S	6	PIN, LOCATING
10..	25 041 49-S	2	GASKET, EXHAUST
11..	24 032 19-S	1	SEAL, OIL
12..	28 032 09-S	1	SEAL, CROSS SHAFT
13..	12 153 07-S	1	O-RING
14..	25 153 09-S	1	O-RING

ITEM	PART NO.	QTY.	DESCRIPTION
15..	25 108 01-S	2	RING SET (STD)
	25 108 02-S	2	RING SET (0.08)
	25 108 03-S	2	RING SET (0.25)
	25 108 04-S	2	RING SET (0.50)
16..	25 874 14-S	2	PISTON KIT, 745CC (STD)
	25 874 18-S	2	PISTON KIT, 745CC (0.08)
	25 874 19-S	2	PISTON KIT, 745CC (+0.25)
	25 874 20-S	2	PISTON KIT, 745CC (+0.50)
17..	24 018 01-S	4	RETAINER, PISTON PIN
18..	24 018 09-S	1	RETAINER, RING
19..	25 086 398-S	1	SCREW, THD FRM
20..	24 468 15-S	1	WASHER, FLAT 1 ¹ / ₃ "
21..	M-931010-S	1	WASHER, FLAT 9 MM

ENGINE
917.204170
Oil Pan



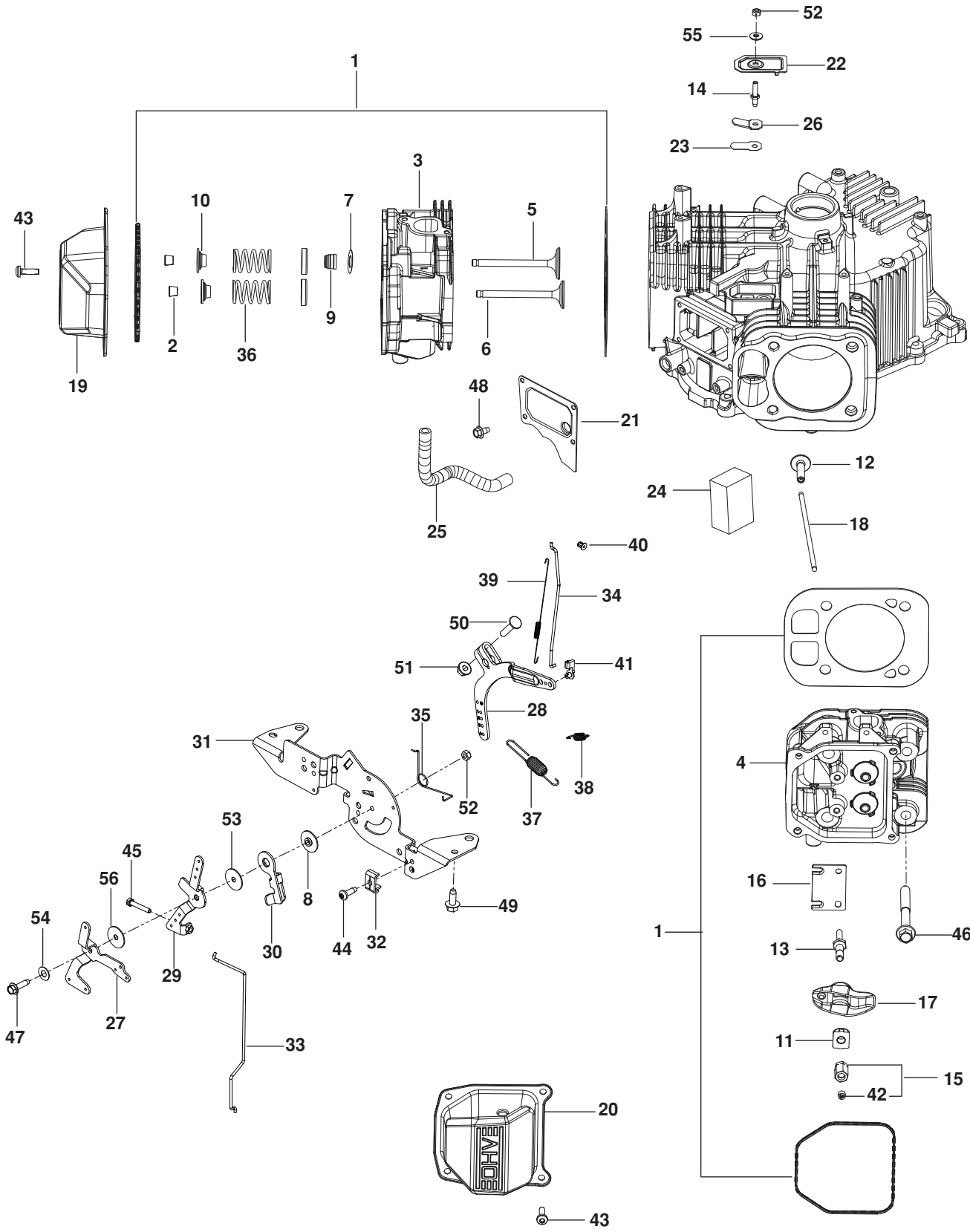
ENGINE

Kohler Engine - PS-KT745-3042

ITEM	PART NO.	QTY.	DESCRIPTION
1..	32 199 17-S	1	PAN ASSEMBLY, OIL
2..	24 393 51-S	1	PUMP ASSEMBLY, OIL
3..	32 310 02-S	1	KIT, GOVERNOR GEAR
4..	25 032 06-S	1	SEAL, OIL
5..	25 139 57-S	2	PLUG, SQ HD PIPE 3/8"
6..	25 139 60-S	1	PLUG, CTSK PIPE 1/8"
7..	12 144 02-S	1	SHAFT, GOVERNOR GEAR

ITEM	PART NO.	QTY.	DESCRIPTION
8..	32 162 06-S	1	SCREEN, OIL
9..	12 380 01-S	1	PIN, REGULATING
10..	24 448 02-S	1	TAB, LOCKING
11..	52 050 02-S	1	FILTER, OIL
12..	32 089 06-S	1	SPRING, COMPRESSION
13..	25 086 414-S	3	SCREW, BUTTON HEAD
14..	24 086 17-S	10	SCREW, FLG M8X1.25X45

ENGINE
917.204170
Cylinder Head

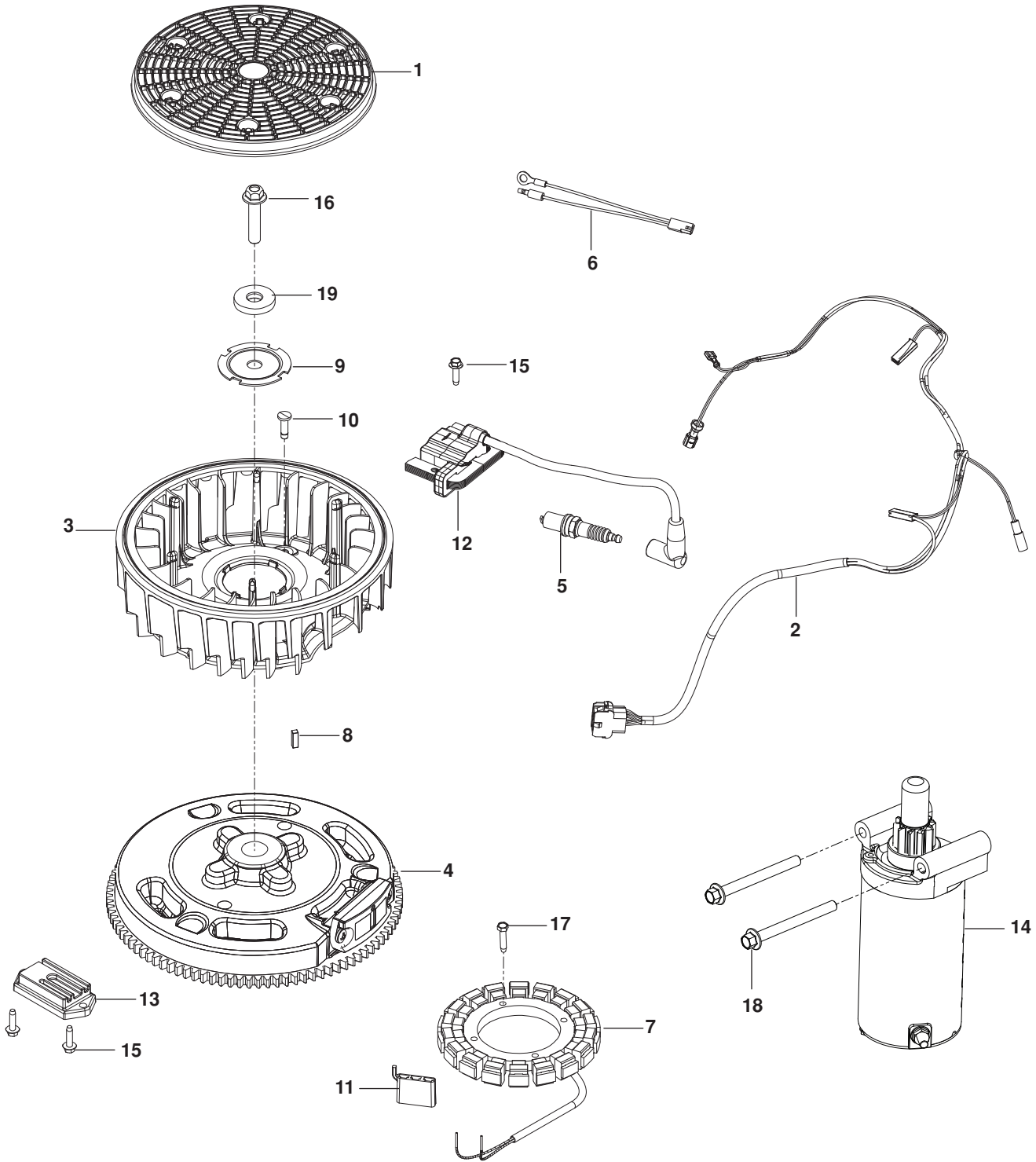


ENGINE

Kohler Engine - PS-KT745-3042

ITEM	PART NO.	QTY.	DESCRIPTION	ITEM	PART NO.	QTY.	DESCRIPTION
1..	32 841 02-S	2	KIT, HEAD GASKET	29..	24 090 13-S	1	LEVER, CONTROL
2..	12 755 03-S	8	KIT, RETAINER	30..	24 090 47-S	1	LEVER, ACTUATOR
3..	32 318 21-S	1	HEAD, ASSY CYLINDER (#1)	31..	32 126 04-S	1	BRACKET, CONTROL
4..	32 318 22-S	1	HEAD, ASSY CYLINDER (#2)	32..	12 237 01-S	2	CLAMP, CABLE
5..	32 017 01-S	2	VALVE, INTAKE	33..	24 079 22-S	1	LINKAGE, CHOKE
6..	32 016 01-S	2	VALVE, EXHAUST	34..	32 079 01-S	1	LINKAGE, THROTTLE
7..	275067-S	2	SPACER (.010")	35..	24 089 03-S	1	SPRING, CHOKE RETURN
8..	24 112 27-S	1	SPACER, CONTROL	36..	32 089 05-S	4	SPRING, VALVE
9..	25 032 14-S	2	SEAL, VALVE BAND	37..	24 089 25-S	1	SPRING, GOVERNOR
10..	25 173 28-S	4	CAP, VALVE SPRING	38..	24 089 55-S	1	SPRING, GOVERNED IDLE
11..	25 599 01-S	4	PIVOT, ROCKER ARM	39..	32 089 07-S	1	SPRING, LINKAGE
12..	32 019 02-S	4	TAPPET	40..	25 158 08-S	1	BUSHING, RETAINING
13..	32 072 04-S	4	STUD, ROCKER	41..	25 158 11-S	1	BUSHING, LINKAGE
14..	32 072 05-S	1	STUD	42..	25 086 168-S	4	SCREW, SET
15..	32 100 05-S	4	HEX NUT ASSY	43..	25 086 374-S	8	SCREW, PAN HEAD
16..	32 146 09-S	2	PLATE, GUIDE	44..	25 086 405-S	2	SCREW, THREAD FORMING
17..	32 186 03-S	4	ARM, ROCKER	45..	M-403025-S	1	SCREW, SLT HD M4 x 0.7 x 25
18..	32 411 04-S	4	ROD, PUSH	46..	62 086 08-S	8	SCREW, FLG M10 x 1.5 x 90
19..	25 096 09-S	1	COVER, ROCKER STEEL	47..	25 086 473-S	1	SCREW, THD FRM
20..	25 096 11-S	1	COVER, ROCKER STEEL	48..	25 086 400-S	4	SCREW, THD FRM
21..	16 096 02-S	1	COVER, BREATHER MEDIA	49..	25 086 397-S	4	SCREW, THD FRM
22..	32 096 16-S	1	COVER, BREATHER REED	50..	24 211 03-S	1	BOLT, RD HD M6 x 1.0 x 25
23..	12 402 02-S	1	REED, BREATHER	51..	24 211 03-S	1	NUT, FLG M6 x 1.0
24..	32 050 06-S	1	FILTER, BREATHER	52..	M-547050-S	2	NUT, LOCK M5 x .8
25..	25 326 62-S	1	HOSE, BREATHER	53..	24 468 20-S	1	WASHER, FLAT 5 MM
26..	66 018 04-S	1	RETAINER, REED	54..	41 468 03-S	1	WASHER, SPRING 1/4"
27..	24 090 05-S	1	LEVER, CHOKE	55..	32 468 01-S	1	WASHER, SEALING
28..	24 090 57-S	1	LEVER, GOVERNOR	56..	24 468 01-S	1	WASHER, FLAT 5.5 MM

ENGINE
917.204170
Ignition

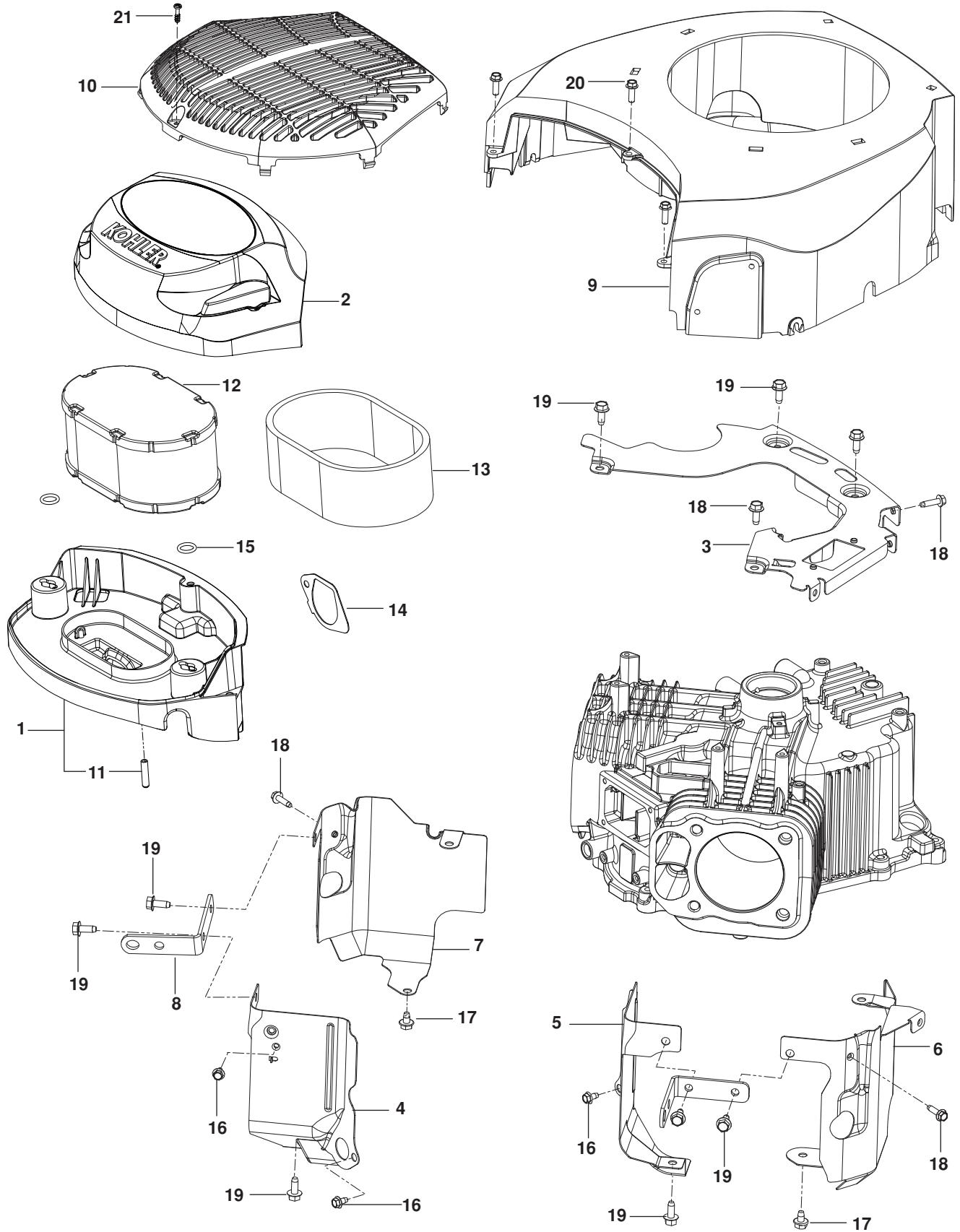


ENGINE

Kohler Engine - PS-KT745-3042

ITEM	PART NO.	QTY.	DESCRIPTION	ITEM	PART NO.	QTY.	DESCRIPTION
1..	32 162 03-S	1	SCREEN, GRASS	11..	25 155 41-S	1	CONNECTOR
2..	32 176 33-S	1	HARNES	12..	32 584 06-S	2	MODULE, IGNITION
3..	32 157 04-S	1	FAN	13..	41 403 10-S	1	REGULATOR / RECTIFIER
4..	32 025 25-S	1	FLYWHEEL ASSY	14..	32 098 04-S	1	STARTER
5..	25 132 12-S	2	PLUG, SPARK (PRO SERIES)	15..	25 086 399-S	4	SCREW, THD FRM
6..	32 518 02-S	1	LEAD, JUMPER	16..	25 086 361-S	1	SCREW, HEX FLANGE
7..	237878-S	1	KIT, 15 / 20 AMP STATOR	17..	25 086 402-S	2	SCREW, THD FRM
8..	25 340 04-S	1	KEY, SQUARE	18..	M-851080-S	2	SCREW, FLG M8X1.25x 80
9..	20 146 05-S	1	PLATE, FAN MOUNTING	19..	25 468 09-S	1	WASHER, FLAT
10..	32 018 03-S	2	RETAINER, FLYWHEEL FAN				

ENGINE
917.204170
Housing

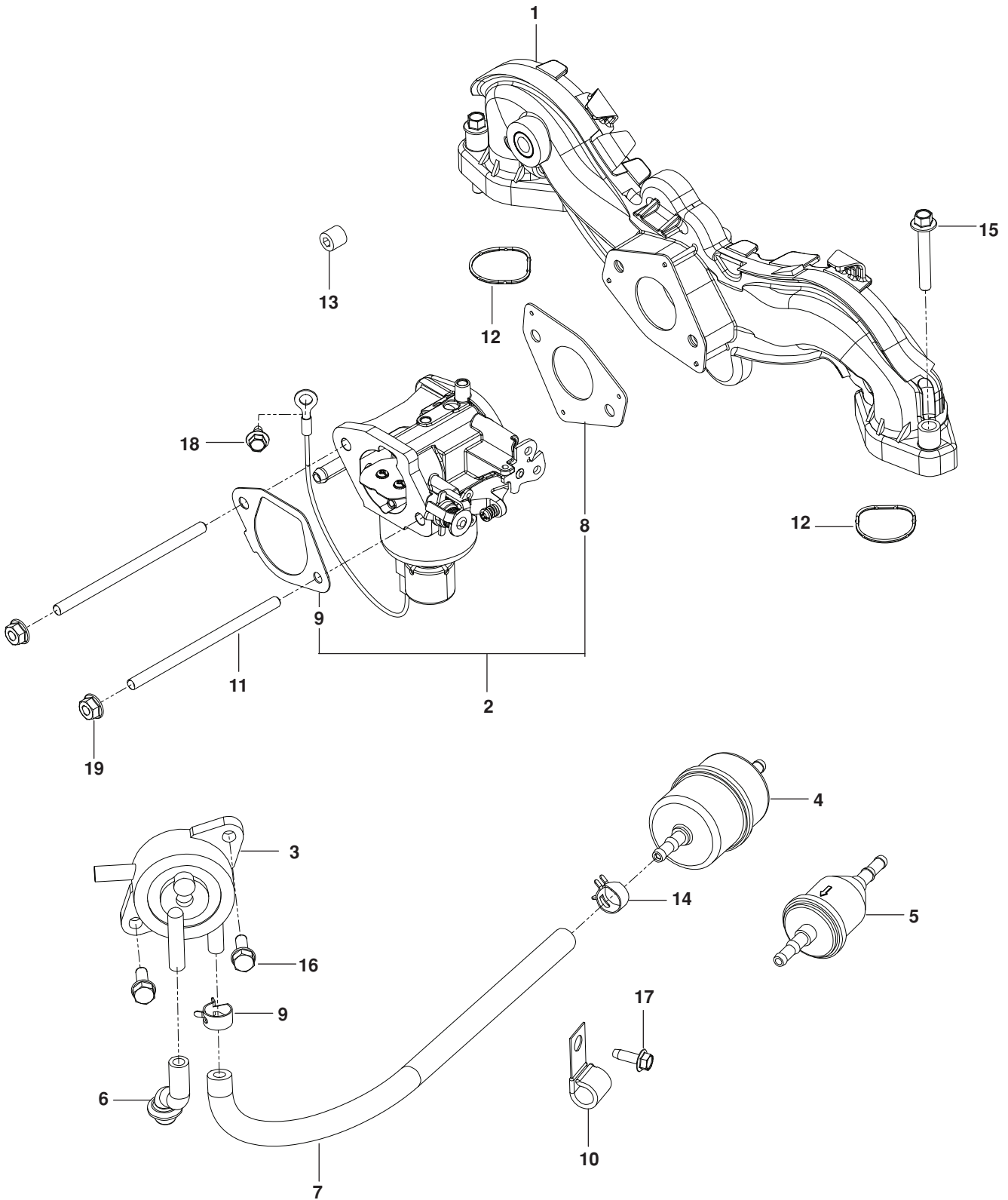


ENGINE

Kohler Engine - PS-KT745-3042

ITEM	PART NO.	QTY.	DESCRIPTION	ITEM	PART NO.	QTY.	DESCRIPTION
1..	32 094 13-S	1	BASE ASSY, AIR CLEANER	12..	16 083 04-S	1	ELEMENT, AIR FILTER
2..	32 096 22-S	1	COVER ASSY, AIR CLEANER	13..	16 083 05-S	1	ELEMENT, PRECLEANER
3..	32 146 15-S	1	PLATE, BACKING	14..	32 041 04-S	1	GASKET, AIR CLEANER BASE
4..	32 063 19-S	1	BAFFLE, VALLEY #1	15..	25 153 15-S	2	O-RING
5..	32 063 20-S	1	BAFFLE, VALLEY #2	16..	25 086 400-S	2	SCREW, THD FRM
6..	32 063 17-S	1	BAFFLE, LT BARREL	17..	25 086 406-S	2	SCREW, THD FRM
7..	32 063 18-S	1	BAFFLE, RT BARREL	18..	25 086 399-S	6	SCREW, THD FRM
8..	32 445 01-S	2	STRAP, LIFTING	19..	25 086 397-S	8	SCREW, THD FRM
9..	32 027 17-S	1	HOUSING, BLOWER	20..	25 086 450-S	3	SCREW, HI-LOW
10..	32 314 06-S	1	GUARD, FIXED	21..	25 086 449-S	1	SCREW, M5-2.42
11..	25 173 09-S	1	CAP, MASKING				

ENGINE
917.204170
Fuel System



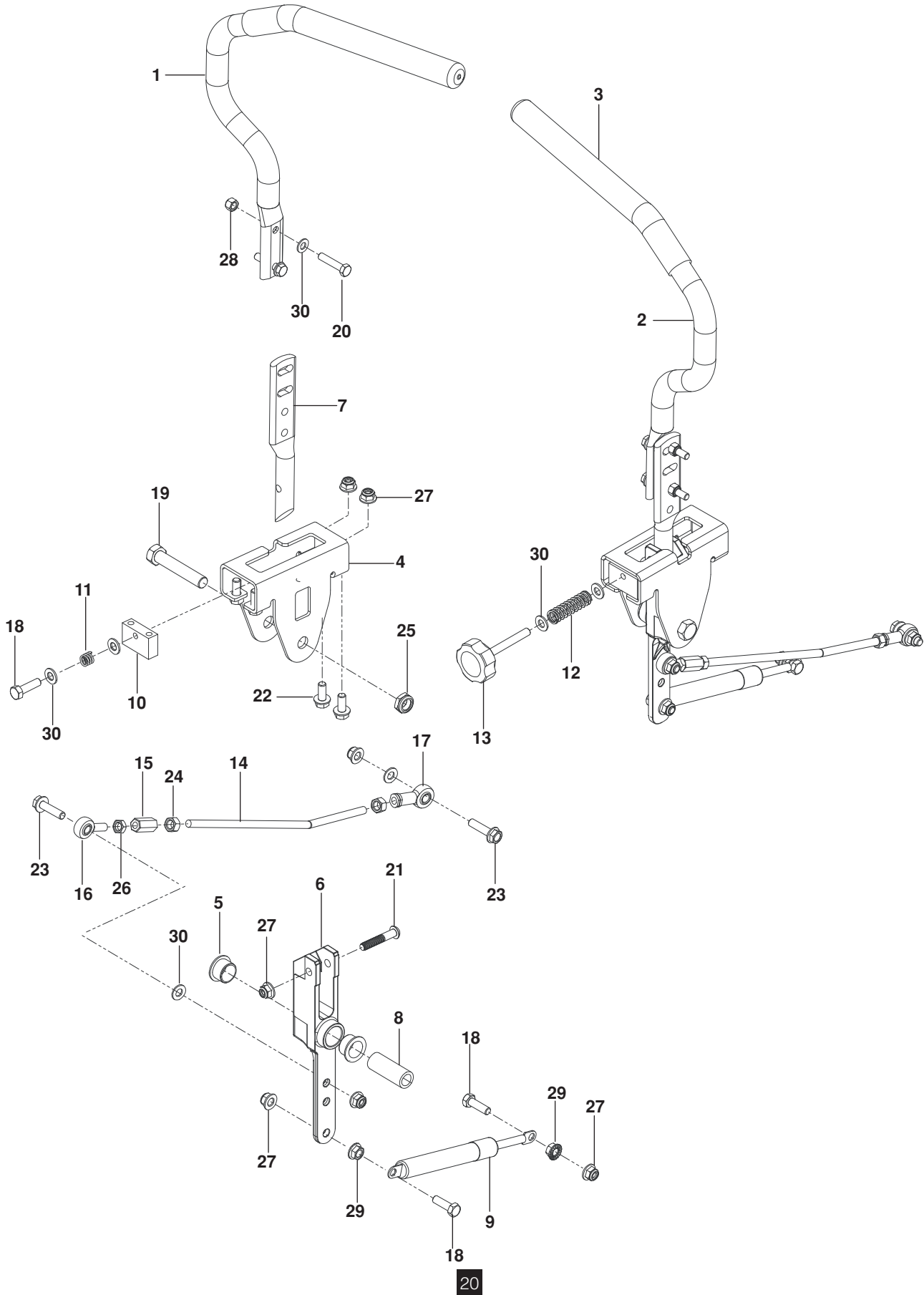
ENGINE

Kohler Engine - PS-KT745-3042

ITEM	PART NO.	QTY.	DESCRIPTION
1..	24 164 91-S	1	KIT, INTAKE MANIFOLD
2..	32 853 43-S	1	KIT, CARBURETOR
3..	24 393 16-S	1	PUMP, FUEL
4..	24 050 13-S	1	FILTER, FUEL
5..	25 050 22-S	1	FILTER, FUEL PUMP
6..	32 326 08-S	1	HOSE, PULSE PUMP
7..	25 111 34-S	1	HOSE, PERM
8..	25 139 60-S	1	PLUG, CTSK PIPE 1/8"
9..	24 041 52-S	1	GASKET, CARBURETOR
10..	32 041 04-S	1	GASKET, AIR CLEANER BASE

ITEM	PART NO.	QTY.	DESCRIPTION
11..	47 154 01-S	1	CLIP, CABLE
12..	25 072 25-S	2	STUD
13..	24 153 27-S	2	O-RING, INTAKE PORT
14..	25 237 37-S	4	CLAMP SPRING HOSE
15..	25 086 400-S	1	SCREW, THD FRM
16..	M-651040-S	4	SCREW, FLG M6 x 1.0 x 40
17..	24 086 12-S	2	SCREW, TAP M6 x 1.7 x 18
18..	25 086 398-S	1	SCREW, THD FRM
19..	M-641060-S	2	NUT, FLG M6X1.0

STEERING
917.204170

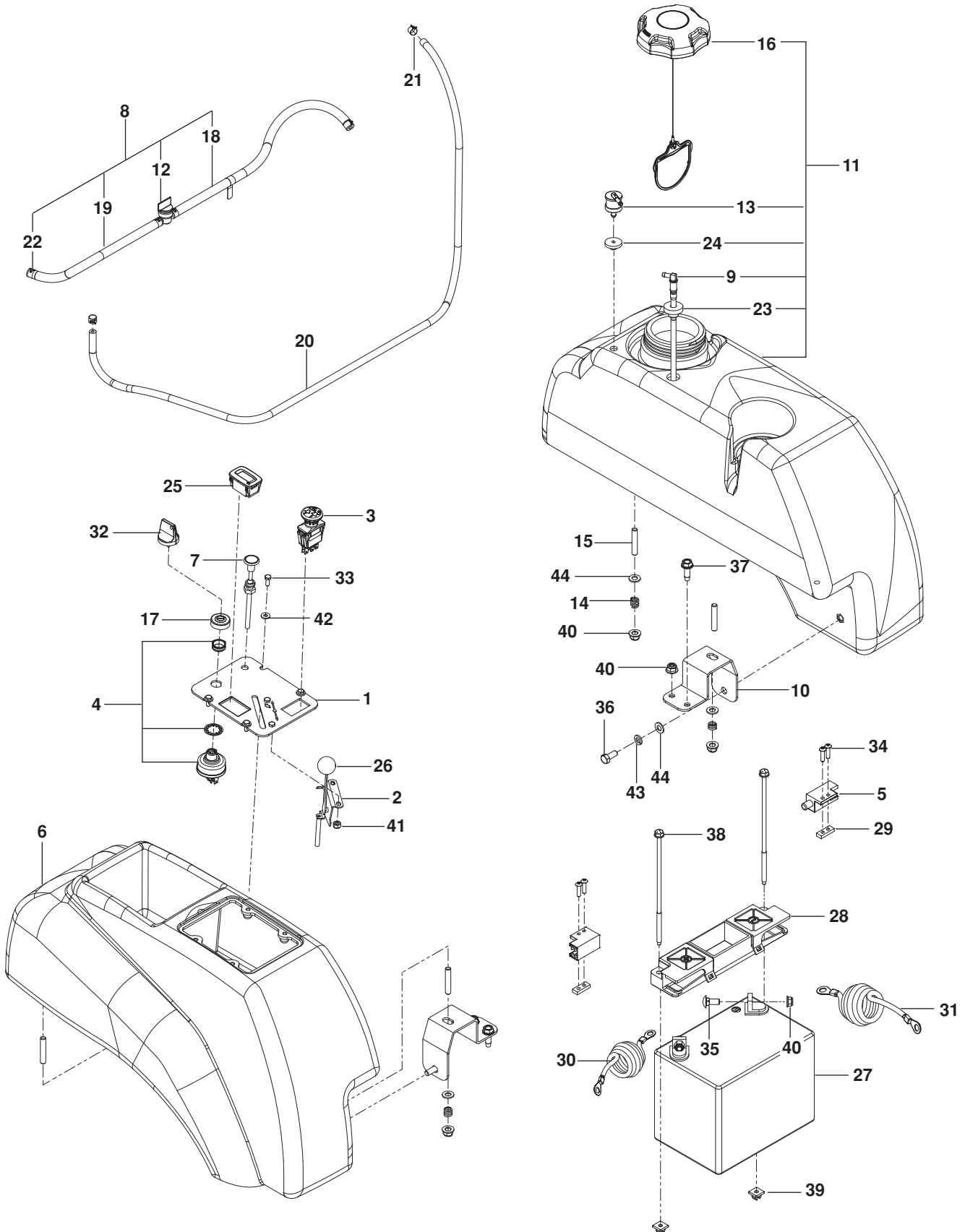


STEERING

ITEM	PART NO.	QTY.	DESCRIPTION	ITEM	PART NO.	QTY.	DESCRIPTION
1..	539 13 20-09.....	1	LEVER w/ GRIP RT	16..	539 11 66-90.....	2	ROD END LT
2..	539 13 20-10.....	1	LEVER w/ GRIP LT	17..	539 11 57-29.....	2	ROD END RT
3..	539 13 08-94.....	2	GRIP, FOAM	18..	874 78 05-20.....	5	HCS $\frac{5}{16}$ -18 x $1\frac{1}{4}$
4..	577 25 17-01.....	2	BRACKET, CONTROL	19..	874 78 08-44.....	2	HCS $\frac{1}{2}$ -13 x $2\frac{3}{4}$
5..	539 13 15-18.....	4	BEARING, FLANGE	20..	874 78 05-24.....	4	HCS $\frac{5}{16}$ -18 x $1\frac{1}{2}$
6..	576 14 03-01.....	2	LEVER, CONTROL	21..	576 85 04-02.....	2	SCREW $\frac{5}{16}$ -18 X $1\frac{3}{4}$ BTN HD
7..	577 42 00-01.....	2	LEVER, HANDLE	22..	874 49 05-12.....	8	HHFS $\frac{5}{16}$ -18 X $\frac{3}{4}$
8..	577 25 24-01.....	2	SPACER, PIVOT CONTROL	23..	525 54 40-01.....	4	HHFS $\frac{5}{16}$ -18 x $1\frac{1}{4}$ TPBLT
9..	539 10 27-20.....	2	DAMPENER	24..	539 99 02-23.....	4	NUT $\frac{5}{16}$ -24 HEX
10..	581 43 75-01	2	BLOCK, TRACKING	25..	539 10 80-10.....	2	NUT $\frac{1}{2}$ -13 HEX JAM NYL GR2
11..	539 10 28-45.....	1	SPRING	26..	539 99 10-73.....	2	NUT $\frac{5}{16}$ -24 HEX JAM LH
12..	576 85 03-01.....	1	SPRING	27..	539 11 28-99... 10	10	NUT $\frac{5}{16}$ -18 HEX FLG NYLOC
13..	539 13 17-99.....	1	KNOB	28..	539 99 07-17.....	6	NUT $\frac{5}{16}$ -18 HEX NYLOC
14..	574 81 14-01.....	2	ROD, MOTION CONTROL	29..	539 99 05-85.....	4	NUT $\frac{5}{16}$ -18 HEX WHIZLK
15..	539 11 66-89.....	2	COUPLER, ROD END	30..	819 11 11-16... 12	12	WASHER $\frac{5}{16}$ SAE FLT

IGNITION

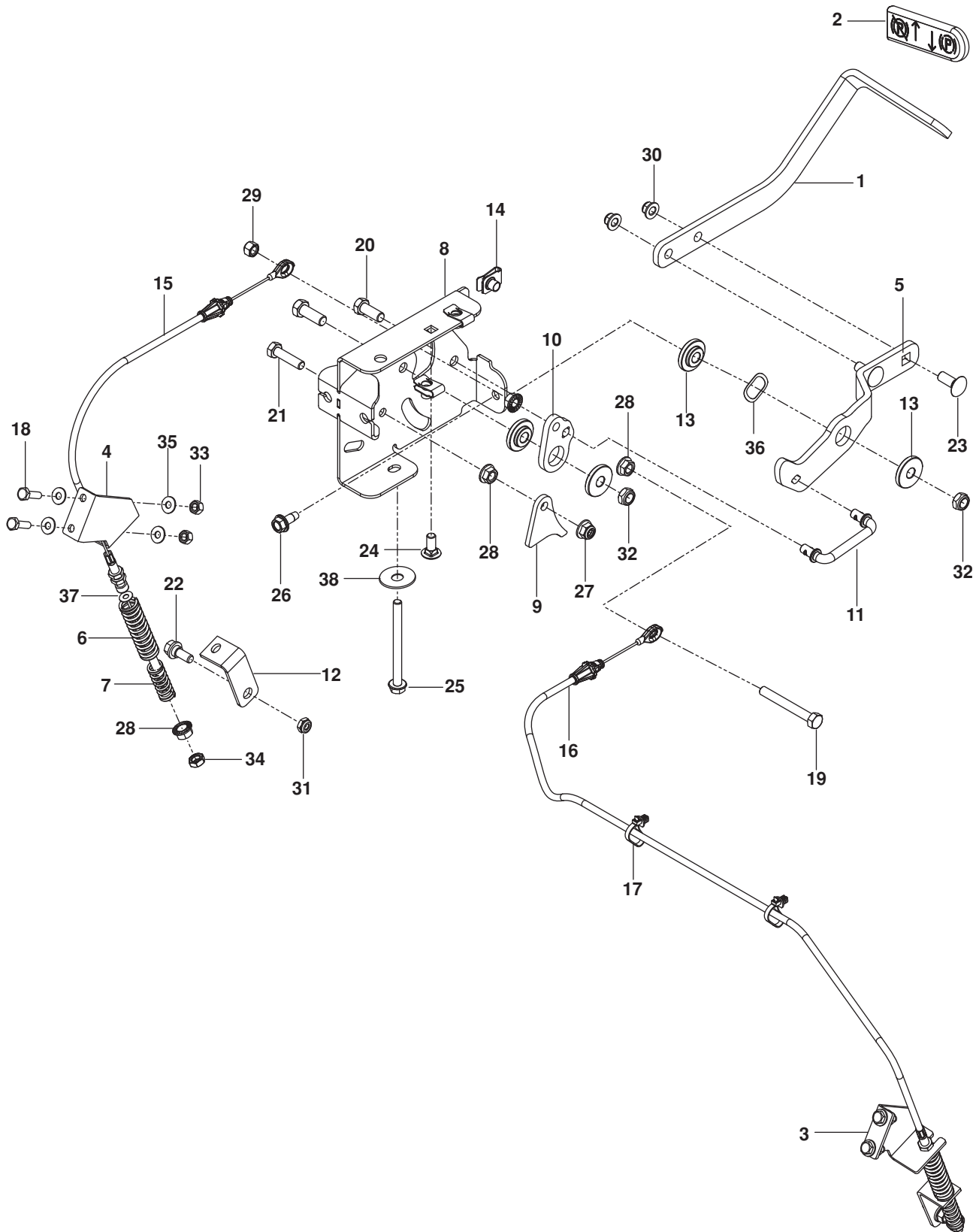
917.204170



IGNITION

ITEM	PART NO.	QTY.	DESCRIPTION	ITEM	PART NO.	QTY.	DESCRIPTION
1..	574 84 12-04.....	1	PLATE, CONSOLE, BLK	24..	576 61 82-01.....	1	GROMMET, CHECK VALVE
2..	539 10 27-32.....	1	CABLE, THROTTLE	25..	586 16 18-01.....	1	MINDER, SERVICE
3..	539 13 16-27.....	1	SWITCH, PTO 10 AMP	26..	539 13 30-49.....	1	KNOB
4..	574 45 54-01.....	1	SWITCH, IGNITION	27..	539 10 24-36.....	1	BATTERY
5..	532 10 95-53.....	2	SWITCH, INTERLOCK	28..	539 10 76-28.....	1	BATTERY HOLD DOWN
6..	576 68 37-01.....	1	CONSOLE, RT	29..	581 22 30-01.....	2	PLATE, TAPPED
7..	539 11 34-58.....	1	CHOKE CONTROL	30..	539 10 49-74.....	1	CABLE, POSITIVE 31"
8..	576 54 78-01.....	1	ASSY, FUEL LINE	31..	539 10 76-45.....	1	CABLE, NEGATIVE 32"
9..	576 46 92-01.....	1	FITTING, FUEL	32..	574 45 55-01.....	1	KEY, IGNIITION
10..	539 13 16-71.....	2	SUPPORT, TANK, BLK	33..	539 99 04-11.....	6	SCREW #10-24 x 1/2 SLT
11..	585 72 23-02.....	1	TANK ASSY LT BLK	34..	574 82 27-01.....	4	SCREW #10-24 x 3/4 SKT HD
12..	539 91 63-25.....	1	VALVE, FUEL	35..	539 99 03-16.....	2	RHSNB 5/16-18 x 3/4
13..	576 61 81-01.....	1	VALVE, FUEL CHECK	36..	539 97 69-34.....	2	HCS 5/16-18 x 3/4
14..	539 10 28-45.....	6	SPRING	37..	539 11 32-26.....	3	BOLT 5/16-18 x 1 THD FRM
15..	539 10 25-02.....	6	STUD 5/16-18	38..	539 10 76-32.....	2	BOLT 1/4 x 7 1/2
16..	575 01 81-01.....	1	FUEL CAP w /TETHER	39..	539 10 76-29.....	2	NUT 1/4 PUSH NYLON
17..	539 10 31-78.....	1	CAP, IGNITION SWITCH NUT	40..	539 11 28-99... 12	12	NUT 5/16-18 HEX FLANGE NYL
18..	539 10 77-65.....	1	HOSE, FUEL 26"	41..	539 97 69-77.....	2	NUT #10-24 NYLOC
19..	539 93 29-56.....	1	HOSE, FUEL 10"	42..	539 10 54-08.....	4	WASHER #10
20..	576 66 06-11.....	1	HOSE 3/16 VAPOR 36"	43..	539 99 01-87.....	2	WASHER 5/16 SLW
21..	575 43 65-01.....	2	CLAMP, HOSE	44..	819 11 11-16.....	8	WASHER 5/16 SAE FLT
22..	532 12 34-87.....	4	CLAMP, HOSE	NOT SHOWN			
23..	539 10 52-45.....	1	GROMMET, RUBBER	585 99 97-01	1	HARNESS, MAIN	

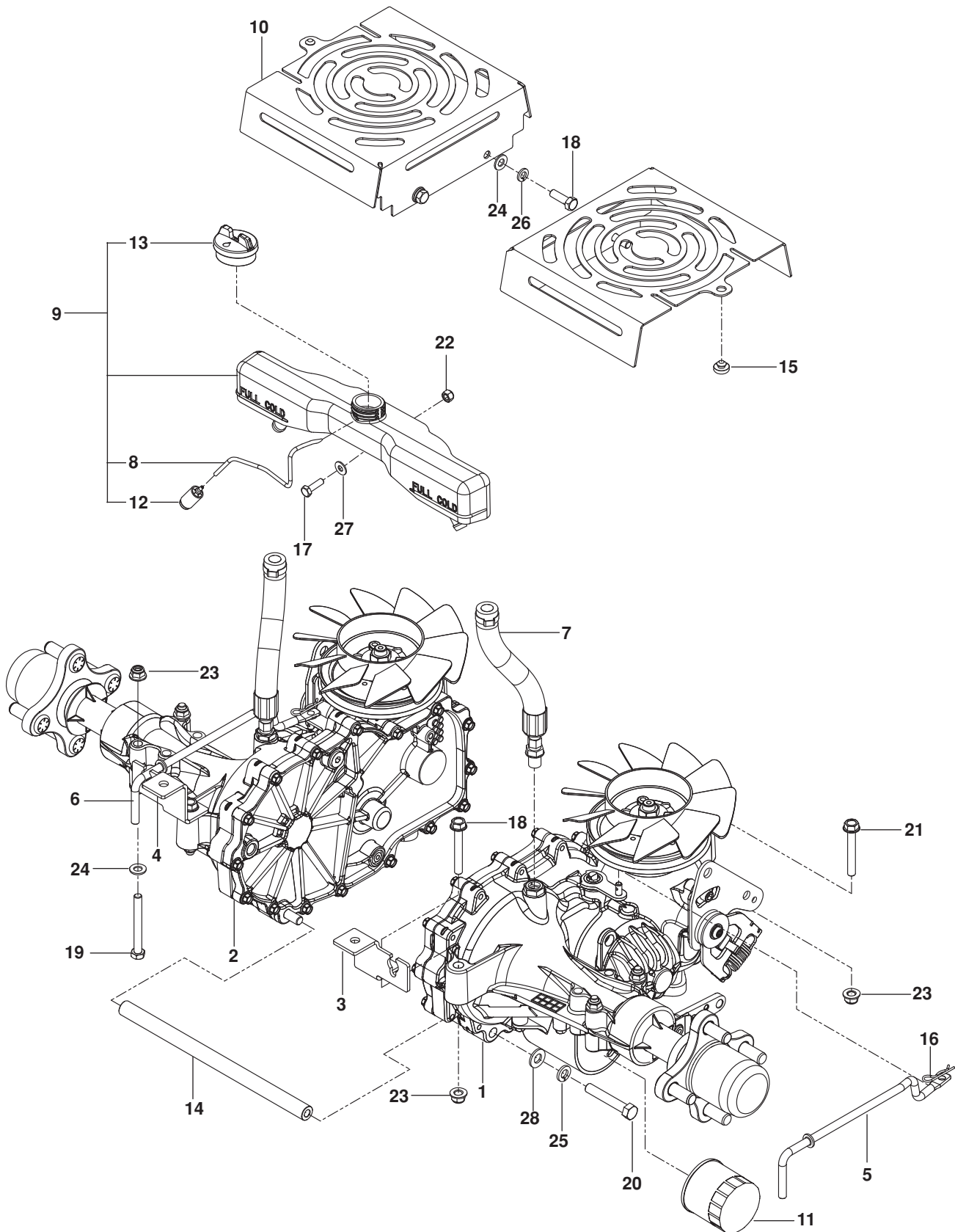
PARK BRAKE
917.204170



PARK BRAKE

ITEM	PART NO.	QTY.	DESCRIPTION	ITEM	PART NO.	QTY.	DESCRIPTION
1..	539 13 21-51.....	1	ARM, BRAKE BLK	20..	539 99 05-63.....	2	HCS $\frac{3}{8}$ -16 x 1
2..	539 10 50-36.....	1	GRIP, BRAKE HANDLE	21..	539 99 02-09.....	1	HCS $\frac{5}{16}$ -18 x 1
3..	575 22 96-02.....	1	BRACKET, RT BLK	22..	539 11 03-03.....	2	BOLT $\frac{5}{16}$ SHOULDER
4..	575 22 97-02.....	1	BRACKET, LT BLK	23..	539 99 06-45.....	2	RHSNB $\frac{3}{8}$ -16 x 1
5..	539 13 24-23.....	1	LEVER, BRAKE	24..	539 99 03-16.....	1	RHSNB $\frac{5}{16}$ -18 x $\frac{3}{4}$
6..	575 23 02-01.....	2	SPRING, RETURN	25..	539 13 17-80.....	1	HHFS $\frac{5}{16}$ -18 x $3\frac{3}{4}$
7..	575 23 03-01.....	2	SPRING, ENGAGEMENT	26..	539 10 74-75.....	1	BOLT $\frac{5}{16}$ -18 x $\frac{3}{4}$ THD FRM
8..	539 13 21-58.....	1	MOUNT, BRAKE BLK	27..	539 11 28-99.....	4	NUT $\frac{5}{16}$ -18 FLANGE NYLOC
9..	539 13 21-54.....	1	ACTUATOR, SWITCH	28..	539 99 05-85.....	5	NUT $\frac{5}{16}$ -18 HEX WHIZLK
10..	539 13 21-53.....	1	BELLCRANK, BRAKE	29..	539 99 07-17.....	1	NUT $\frac{5}{16}$ -18 HEX NYLOC
11..	539 13 24-24.....	1	LINKAGE, BRAKE	30..	521 99 65-01.....	2	NUT $\frac{3}{8}$ -16 HEX FLG NYLOC
12..	575 22 98-02.....	2	BRACKET, BRAKE	31..	539 11 56-17.....	2	NUT $\frac{5}{16}$ HEX NYLOC
13..	539 13 21-61.....	4	BUSHING, BRAKE	32..	539 20 02-82.....	2	NUT $\frac{3}{8}$ -16 HEX JAM NYLOC
14..	539 10 47-63.....	3	RETAINER, U TYPE $\frac{5}{16}$ -18	33..	539 97 69-78.....	4	NUT $\frac{1}{4}$ -20 HEX NYLOC
15..	539 13 21-73.....	1	CABLE, BRAKE SHORT	34..	539 10 78-97.....	2	NUT $\frac{5}{16}$ -18 HEX JAM
16..	539 13 21-74.....	2	CABLE, BRAKE LONG	35..	539 99 00-55.....	8	WASHER $\frac{1}{4}$ SAE FLT
17..	505 28 00-01.....	2	TIE w/ CLIP	36..	539 13 30-07.....	1	WASHER .825 WAVE
18..	539 99 06-43.....	4	HCS $\frac{1}{4}$ -20 x $\frac{7}{8}$	37..	539 99 01-22.....	2	WASHER $\frac{3}{8}$ SAE
19..	539 10 83-96.....	1	HCS $\frac{5}{16}$ -18 x $2\frac{1}{2}$ TPBLT	38..	539 10 95-54.....	1	WASHER $\frac{1}{2}$ FLT

HYDRAULIC PUMP-MOTOR 917.204170

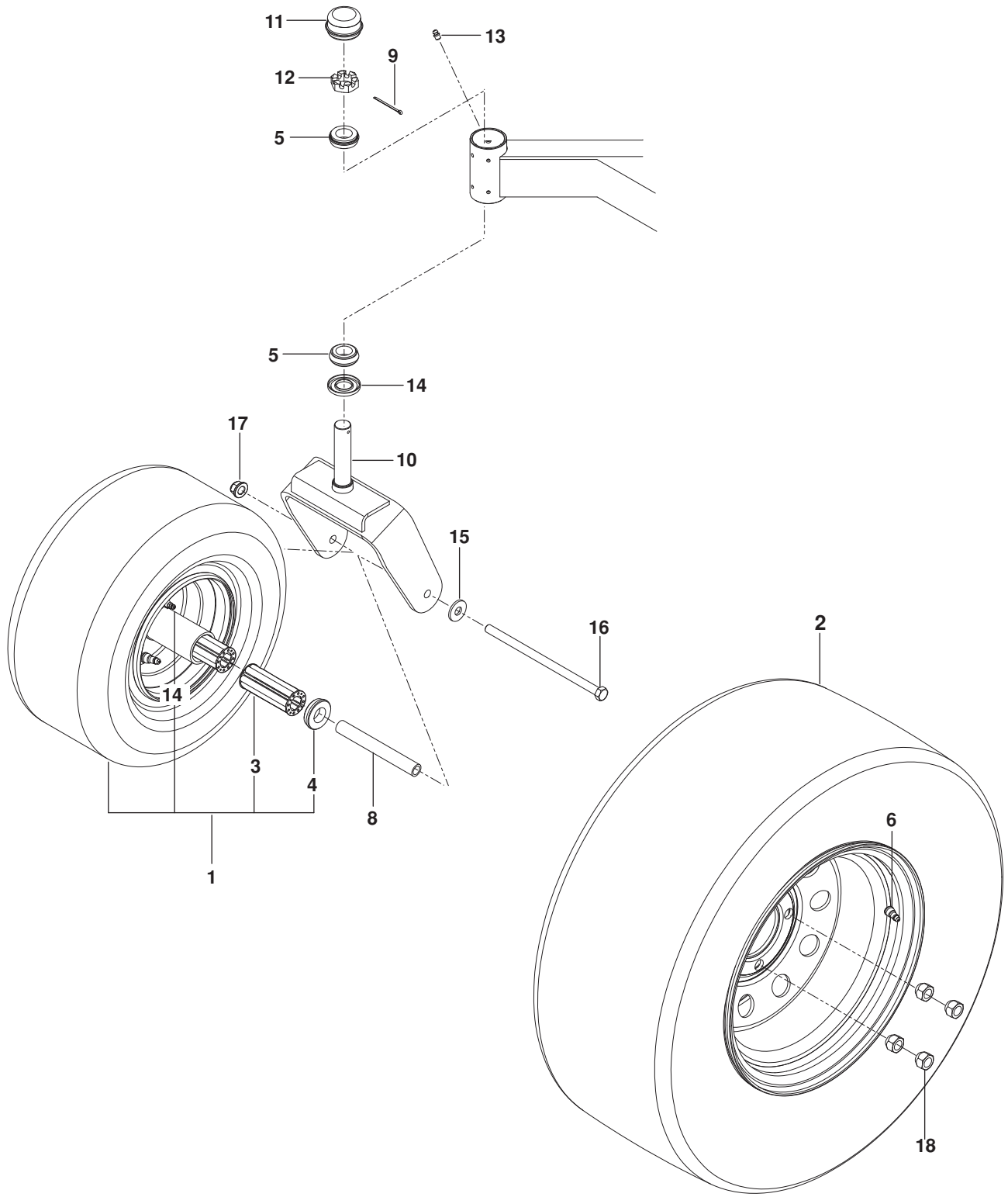


HYDRAULIC PUMP-MOTOR

ITEM	PART NO.	QTY.	DESCRIPTION
1..	577 22 77-02.....	1	TRANS, ZT-3100, LT
2..	577 22 77-01.....	1	TRANS, ZT-3100, RT
3..	575 01 71-02.....	1	BRACKET, TRANS, LT
4..	575 01 70-02.....	1	BRACKET, TRANS, RT
5..	539 13 16-16.....	1	LINKAGE, BYPASS LT
6..	539 13 16-18.....	1	LINKAGE, BYPASS RT
7..	586 16 58-01.....	2	HOSE, EXPANSION
8..	586 06 75-01.....	1	HOSE, FUEL
9..	585 31 82-01.....	1	TANK, EXPANSION
10..	575 77 82-02.....	2	COVER, FAN
11..	539 11 34-66.....	2	FILTER, HYDRO
12..	530 09 56-46.....	1	FILTER
13..	586 07 27-01.....	1	CAP, TANK
14..	574 86 85-01.....	1	TUBE 10 ³ / ₈ " SPACER

ITEM	PART NO.	QTY.	DESCRIPTION
15..	539 10 25-87.....	2	GROMMET, BUMPER
16..	539 97 69-88.....	2	HAIRPIN COTTER
17..	539 99 06-43.....	1	HCS 1/4-20 x 7/8
18..	539 99 02-09.....	4	HCS 5/16-18 x 1
19..	539 10 17-21.....	4	HCS 5/16-18 x 2 ³ / ₄
20..	539 10 85-51.....	2	HCS 3/8-16 x 2 ¹ / ₂ GR8
21..	574 23 38-01.....	4	HHFS 5/16-18 x 2 ¹ / ₄
22..	539 97 69-78.....	1	NUT 1/4-20 HEX NYLOC
23..	539 11 28-99.....	8	NUT 5/16-18 HEX FLG NYLOC
24..	539 99 01-88.....	8	WASHER 5/16 SAE FLT
25..	539 99 01-18.....	2	WASHER 3/8 SPLT LK
26..	539 99 01-87.....	4	WASHER 5/16 SLW
27..	539 99 00-55.....	1	WASHER 1/4 SAE FLT
28..	539 99 01-22.....	2	WASHER 3/8 SAE FLT

WHEELS
917.204170

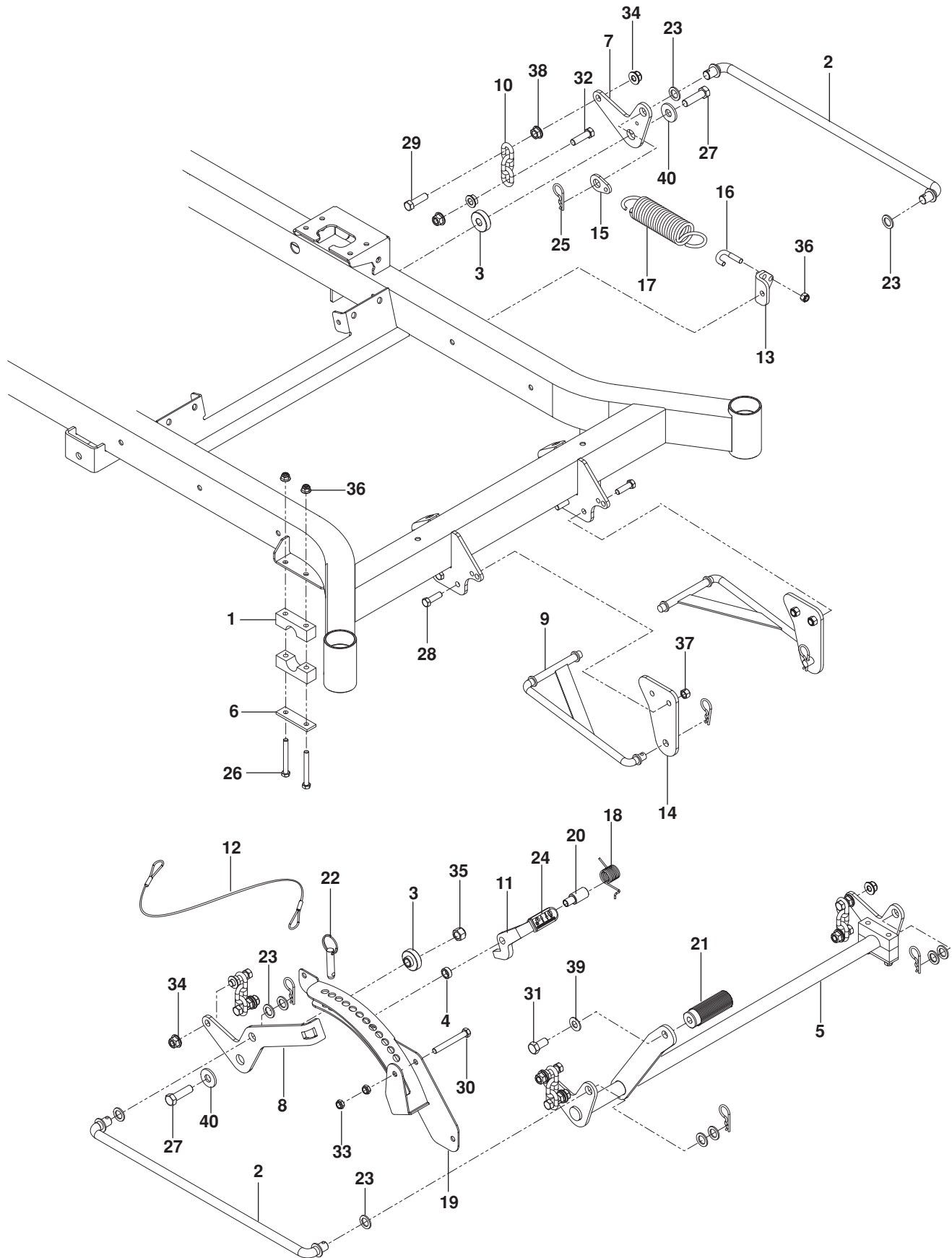


WHEELS

ITEM	PART NO.	QTY.	DESCRIPTION
1..	581 19 95-02.....	2....	WHEEL ASSY 13 x 6.5
2..	580 74 70-02.....	2....	WHEEL ASSY, 22 x 10-10
3..	539 10 53-07.....	4....	BEARING 3¼ CAGE
4..	539 10 24-84.....	4....	FLANGE, BEARING
5..	539 10 25-43.....	4....	BEARING
6..	539 91 22-34.....	4....	AIR VALVE
7..	539 10 28-51.....	2....	SEAL
8..	575 33 49-01.....	2....	SPACER, PIVOT
9..	539 10 28-89.....	2....	COTTER PIN 1/8 x 2

ITEM	PART NO.	QTY.	DESCRIPTION
10..	575 32 92-05.....	2....	YOKE, CASTER, BLK
11..	539 10 25-35.....	2....	CAP, GREASE
12..	539 10 28-52.....	2....	SLOTTED JAM NUT 1"-14
13..	539 10 14-74.....	2....	ZERK
14..	539 10 33-00.....	2....	ZERK
15..	539 10 95-54.....	2....	WASHER ½ FLAT
16..	539 10 28-55.....	2....	HCS ½-13 x 7½
17..	521 99 11-01.....	2....	NUT ½-13 HEX FLG NYLOC
18..	539 10 11-73.....	8....	NUT ½-20 LUG

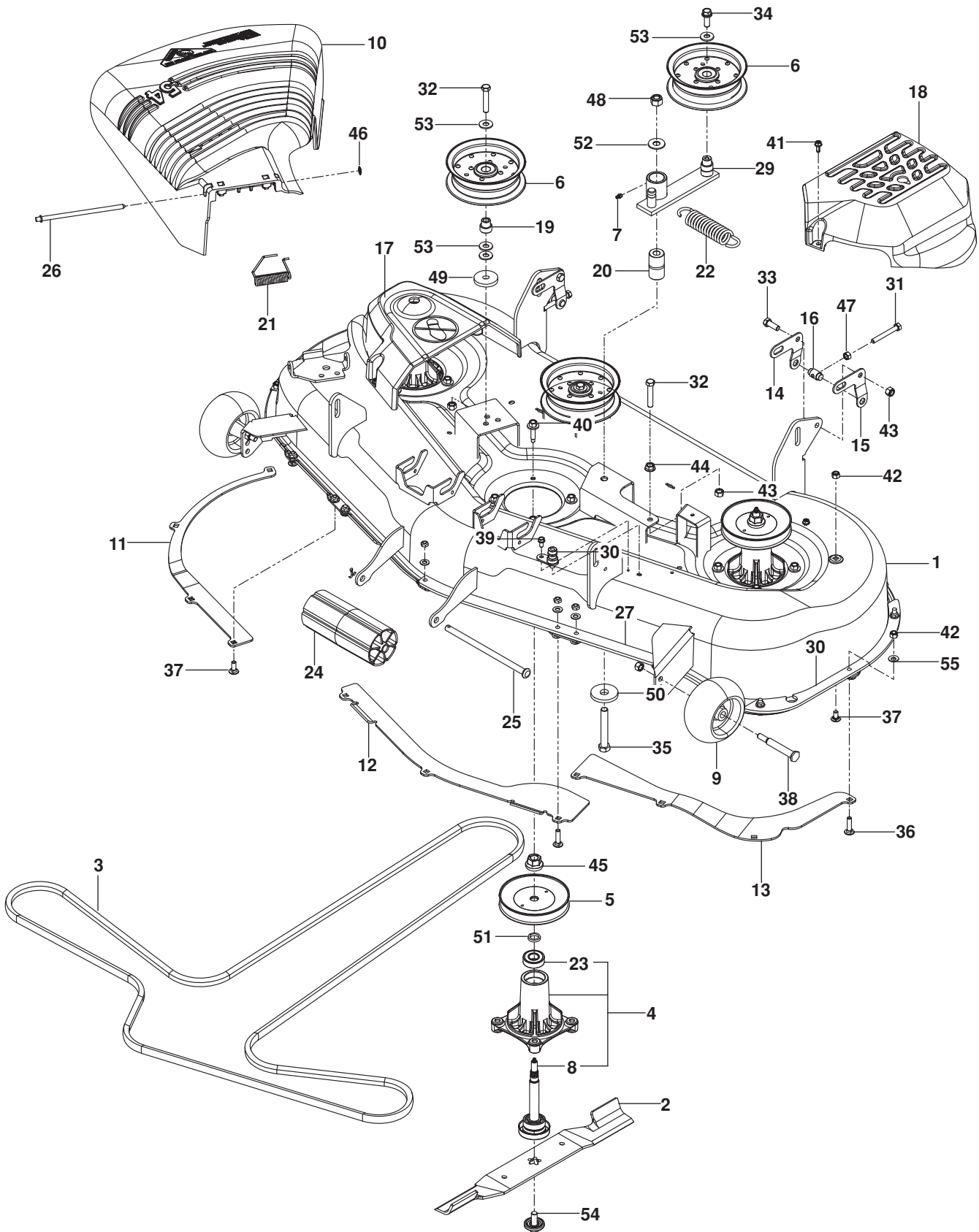
MOWER LIFT / DECK LIFT
917.204170



MOWER LIFT / DECK LIFT

ITEM	PART NO.	QTY.	DESCRIPTION	ITEM	PART NO.	QTY.	DESCRIPTION
1..	539 10 48-08.....	4	PILLOW BLOCK	21..	510 40 83-01.....	1	PEDAL, FOOT
2..	539 11 08-08.....	2	LINK, DECK LIFT	22..	539 13 21-82.....	1	PIN 1/2 x 1 1/2 DETENT RING
3..	539 11 89-37.....	2	SPACER, IDLER	23..	539 99 10-43...	10	BUSHING .625
4..	539 13 18-61.....	1	SPACER	24..	539 13 28-51.....	1	GRIP
5..	581 21 52-02.....	1	SHAFT, FRONT LIFT BLK	25..	539 11 55-01.....	6	PIN, COTTER 1 3/4
6..	539 10 48-07.....	2	REINFORCEMENT BAR	26..	539 10 17-21.....	4	HCS 5/16-18 x 2 3/4
7..	539 13 18-97.....	1	BELLCRANK, RR, LIFT BLK	27..	539 10 81-81.....	2	HCS 1/2-13 x 1 3/4 GR 8
8..	539 13 18-53.....	1	BELLCRANK, RR, RT BLK	28..	539 97 69-41.....	4	HCS 3/8-16 X 1 1/4
9..	539 11 22-23.....	2	LINKAGE, STRUT	29..	539 10 11-75.....	4	HCS 7/16-14 x 1 1/2
10..	539 10 96-93.....	4	LIFT CHAIN-3 LINK	30..	874 78 06-48.....	1	HCS 3/8-16 x 3
11..	539 13 15-66.....	1	LATCH, TRANSPORT	31..	539 99 06-46.....	1	HCS 1/2-13 x 1 3/4
12..	539 10 50-59.....	1	LANYARD	32..	539 10 80-73.....	4	HCS 7/16-14 x 1 3/4
13..	539 13 17-91.....	1	MOUNT, SPRING	33..	539 20 02-82.....	2	NUT 3/8-16 HEX JAM NYLOC
14..	539 13 20-17.....	2	MOUNT, STRUT	34..	539 13 20-19.....	8	NUT 7/16-14 HEX WHIZ LK
15..	539 13 17-92.....	1	TAB, SPRING	35..	539 10 13-31.....	2	NUT 1/2 HEX NYLOC
16..	539 11 28-96.....	1	J-BOLT	36..	539 11 28-99.....	5	NUT 5/16-18 HEX FLG NYLOC
17..	539 10 26-42.....	1	SPRING	37..	539 97 69-79.....	4	NUT 3/8-16 HEX NYLOC
18..	539 13 27-34.....	1	SPRING, TORSION	38..	539 10 25-82.....	8	NUT 7/16-14 HEX WHIZ LK
19..	539 13 18-50.....	1	HEIGHT ADJUST, DECK	39..	539 10 28-43.....	1	WASHER 7/16 SPRING
20..	539 13 18-60.....	1	PIVOT LATCH, TRANSPORT	40..	539 10 95-54.....	2	WASHER 1/2 FLT

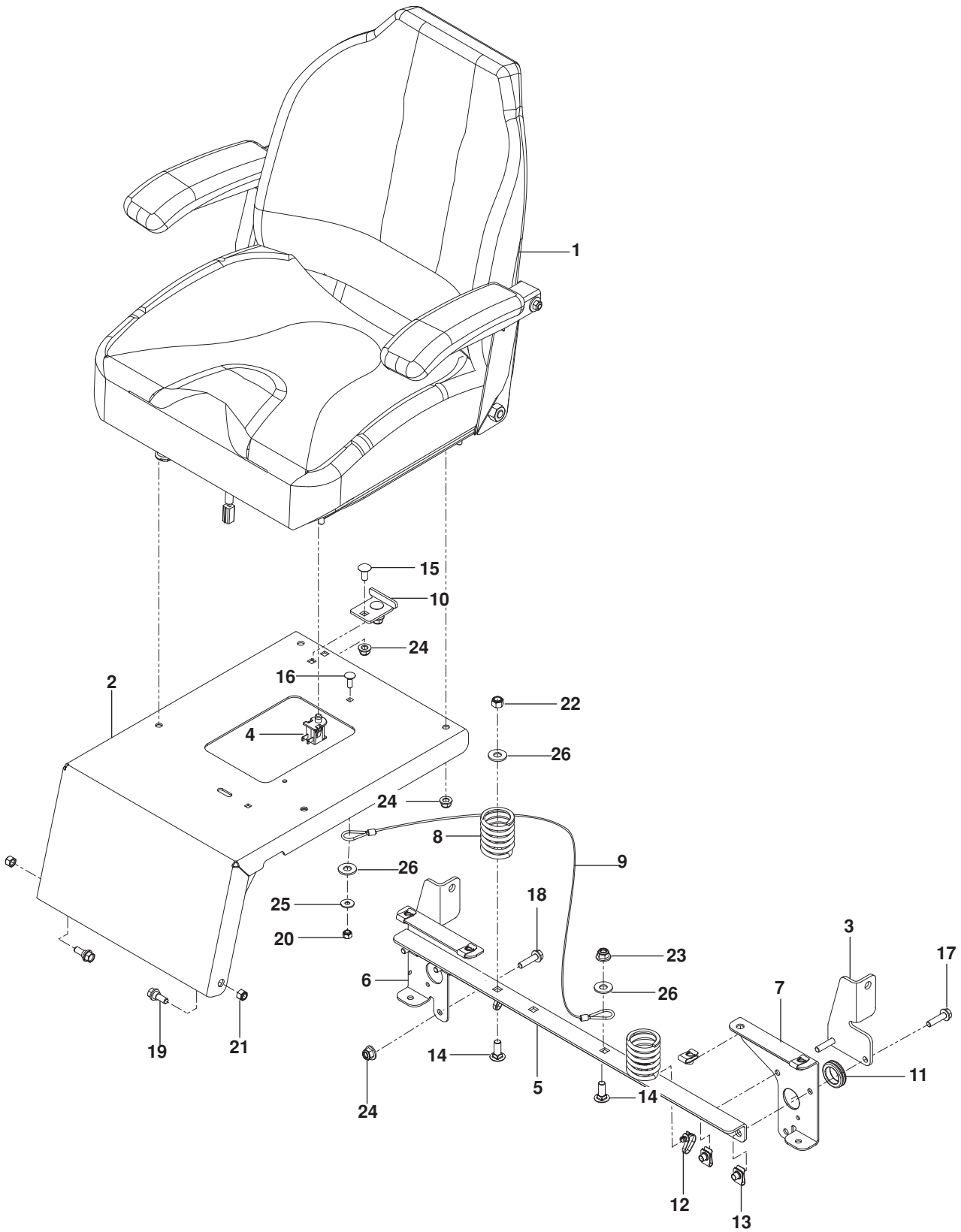
MOWER DECK / CUTTING DECK
917.204170



MOWER DECK / CUTTING DECK

ITEM	PART NO.	QTY.	DESCRIPTION	ITEM	PART NO.	QTY.	DESCRIPTION
1..	522 74 44-03.....	1	DECK w/ SFTY DECALS YEL	29..	539 11 21-98.....	1	ARM, IDLER
2..	532 18 72-56.....	3	BLADE	30..	532 41 55-98.....	1	PORT, WASHOUT
3..	577 50 36-01.....	1	BELT	31..	577 92 32-01.....	2	HCS $\frac{5}{16}$ -18 x 3 TPBLT
4..	532 18 72-92.....	3	MANDREL ASSY	32..	874 78 06-32.....	3	HCS $\frac{3}{8}$ -16 x 2
5..	532 17 34-36.....	3	PULLEY	33..	539 99 05-63.....	2	HCS $\frac{3}{8}$ -16 x 1
6..	539 13 27-28.....	3	PULLEY, IDLER	34..	539 99 05-82.....	1	HCS $\frac{3}{8}$ -16 x 1 WHIZLK
7..	539 97 69-98.....	1	ZERK	35..	539 10 34-33.....	1	HCS $\frac{1}{2}$ -13 x 3 $\frac{1}{4}$
8..	539 11 20-56.....	1	SHAFT, MANDREL	36..	539 10 04-72.....	7	RHSNB $\frac{5}{16}$ -18 x 1 $\frac{1}{4}$
9..	532 13 39-57.....	2	WHEEL	37..	539 99 07-99.....	6	RHSNB $\frac{5}{16}$ -18 x $\frac{5}{8}$
10..	532 18 72-57.....	1	DEFLECTOR	38..	532 19 34-06.....	2	BOLT, SHLDR $\frac{3}{8}$ -16 x 3 $\frac{5}{8}$
11..	532 18 73-42.....	1	BAFFLE RT	39..	539 10 84-61.....	1	BOLT $\frac{1}{4}$ -20 x $\frac{1}{2}$ HWST
12..	532 18 76-07.....	1	BAFFLE, CNTR	40..	532 17 39-84.....	12	SCREW $\frac{5}{16}$ -18 WSHR HEAD
13..	532 18 73-44.....	1	BAFFLE, LT	41..	539 10 76-31.....	4	SCREW $\frac{1}{4}$ -20 x $\frac{5}{16}$ THDROLL
14..	584 85 94-02.....	2	BRACKET, ADJUST RT	42..	873 68 05-00...	12	NUT $\frac{5}{16}$ -18 CROWN LK
15..	584 85 94-04.....	2	BRACKET, ADJUST LT	43..	539 97 69-79.....	7	NUT $\frac{3}{8}$ -16 HEX NYLOC
16..	539 13 18-59.....	2	TRUNNION, PITCH	44..	539 99 06-13.....	1	NUT $\frac{3}{8}$ -16 HEX WHIZLK
17..	532 18 81-87.....	1	COVER, MANDREL RT	45..	532 40 02-34.....	3	NUT $\frac{9}{16}$ TOP CENTER LOCK
18..	532 18 72-97.....	1	COVER, MANDREL LT	46..	539 10 76-26.....	1	PUSHNUT
19..	539 11 20-76.....	2	BUSHING, IDLER	47..	539 99 01-96.....	4	NUT $\frac{5}{16}$ -18 HEX
20..	539 10 34-27.....	1	BUSHING, PIVOT	48..	539 10 13-31.....	1	NUT $\frac{1}{2}$ HEX NYLOC
21..	532 17 81-02.....	1	SPRING, TORSION	49..	539 10 65-04.....	2	WASHER, HEAVY
22..	539 10 32-56.....	1	SPRING	50..	539 10 22-43.....	1	WASHER, SUPPORT
23..	539 11 20-50.....	1	BEARING, BALL	51..	532 18 76-90.....	3	WASHER, SPACER
24..	532 17 60-66.....	1	ROLLER, NOSE	52..	539 99 05-50.....	1	WASHER $\frac{1}{2}$ STD FLT
25..	532 17 91-27.....	1	ROD, ROLLER	53..	539 99 05-17.....	7	WASHER $\frac{3}{8}$ FLAT STD
26..	532 13 14-91.....	1	ROD, HINGE	54..	532 19 30-03.....	3	WASHER/BOLT ASSY
27..	585 32 26-05.....	1	PLATE, FRT	55..	819 11 11-16...	11	WASHER $\frac{5}{16}$ SAE FLT
28..	585 32 28-05.....	1	PLATE, SIDE				

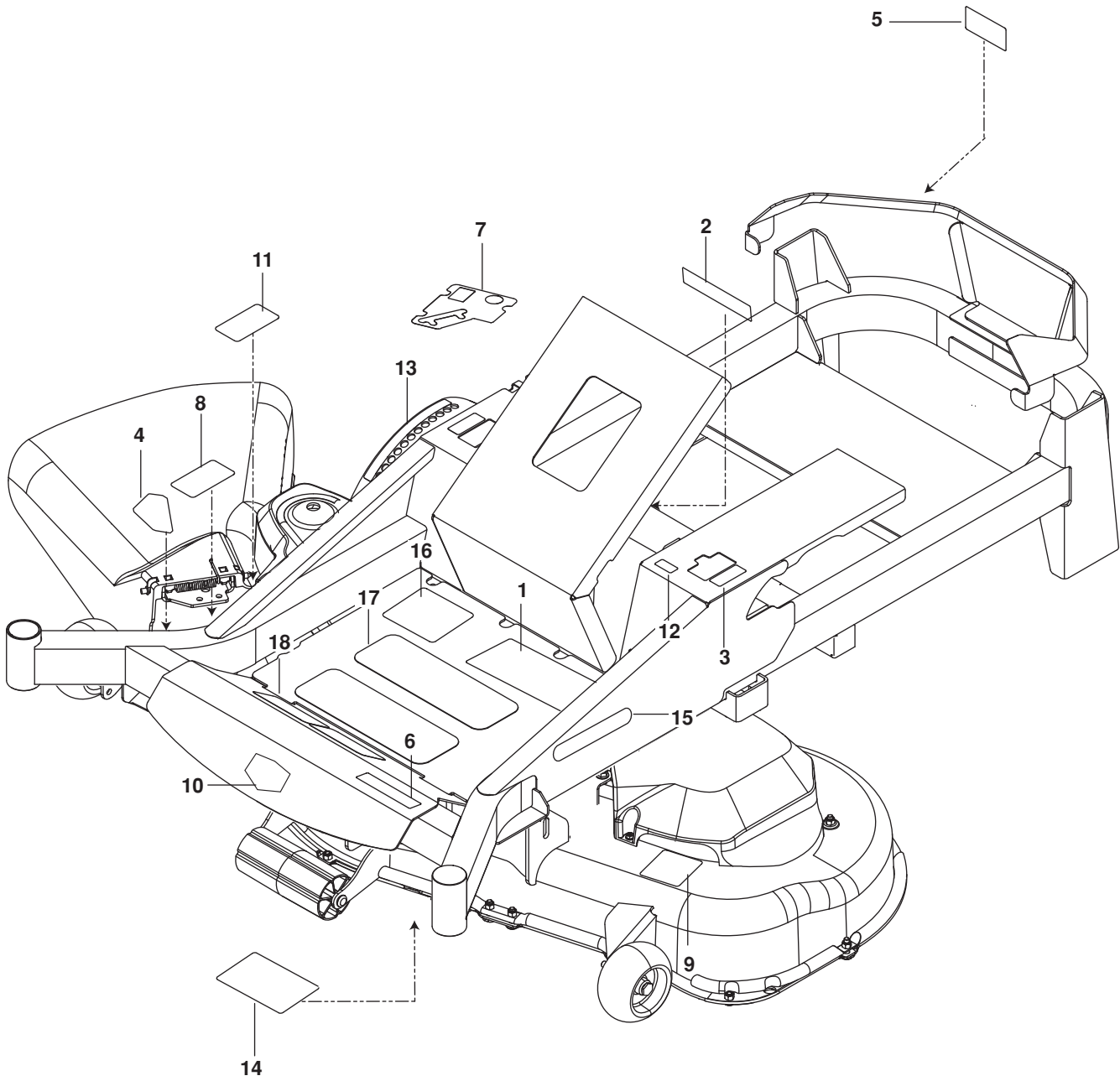
SEAT
917.204170



SEAT

ITEM	PART NO.	QTY.	DESCRIPTION	ITEM	PART NO.	QTY.	DESCRIPTION
1..	586 18 84-01.....	1	SEAT	14..	539 99 06-45.....	3	RHSNB $\frac{3}{8}$ -16 x 1
2..	539 13 28-39.....	1	MOUNT, SEAT w/ DECAL BLK	15..	539 10 91-00.....	2	RHSNB $\frac{5}{16}$ -18 x $\frac{3}{4}$
3..	584 91 68-02.....	2	MOUNT, SEAT BELT BLK	16..	539 99 00-74.....	1	RHSNB $\frac{1}{4}$ -20 x $\frac{3}{4}$
4..	532 42 10-62.....	1	SWITCH, SEAT	17..	525 54 40-01.....	4	HHFS $\frac{5}{16}$ -18 x 1 $\frac{1}{4}$ TPBLT
5..	584 80 91-02.....	1	SUPPORT, SEAT BLK	18..	539 11 32-26.....	2	BOLT $\frac{5}{16}$ -18 x 1 HX THD FRM
6..	584 99 01-02.....	1	SUPPORT, RT BLK	19..	539 13 08-96.....	2	BOLT $\frac{5}{16}$ -18 HEX HD
7..	584 99 02-02.....	1	SUPPORT, LT BLK	20..	539 97 69-78.....	1	NUT $\frac{1}{4}$ -20 HEX NYLOC
8..	532 12 41-81.....	2	SPRING, SEAT	21..	539 99 07-17.....	2	NUT $\frac{5}{16}$ -18 HEX NYLOC
9..	539 10 32-47.....	1	LANYARD, SEAT	22..	539 97 69-79.....	2	NUT $\frac{3}{8}$ -16 HEX NYLOC
10..	539 13 07-93.....	1	SEAT STOP	23..	521 99 65-01.....	1	NUT $\frac{3}{8}$ -16 FLG HEX NYLOC
11..	539 10 59-74.....	1	GROMMET RUBBER	24..	539 11 28-99... 10	10	NUT $\frac{5}{16}$ -18 HEX FLG NYLOC
12..	505 28 00-01.....	2	TIE WRAP w/ CLIP	25..	539 99 05-98.....	1	WASHER $\frac{1}{4}$ FLT
13..	539 10 47-63.....	8	RETAINER, U TYPE	26..	539 99 05-17.....	4	WASHER $\frac{3}{8}$ FLT STD

DECALS
917.204170



DECALS

ITEM	PART NO.	QTY.	DESCRIPTION
1..	583 93 40-01 1	... DECAL, WARNINGS
2..	539 10 57-45 1	... DECAL, BATTERY WARNING
3..	581 28 94-01 2	... DECAL, MOTION CONTROL
4..	539 91 30-10 1	... DECAL, BLADE WARNING
5..	539 10 57-44 1	... DECAL, DANGER BLT DRIVE
6..	586 22 09-01 1 DECAL, Z7400
7..	586 22 10-01 1 DECAL, CONTROL
8..	539 10 57-46 1	... DECAL, SEVERING
9..	539 11 26-20 1	... DECAL, BELT ROUTING
10..	586 31 81-01 1 DECAL, LOGO

ITEM	PART NO.	QTY.	DESCRIPTION
11..	581 72 44-01 1	... DECAL, DEFLECTOR
12..	581 28 93-01 2	... DECAL, TRACKING
13..	586 22 11-01 1	... DECAL, HEIGHT ADJUST
14..	539 13 21-87 1	... DECAL, SERVICE
15..	586 45 64-01 2 DECAL, CRAFTSMAN
16..	586 50 63-01 1 DECAL, START
17..	539 97 77-78 2 PAD, ABRASIVE
18..	539 12 13-22 2 PAD, FOOT
NOT SHOWN			
	574 81 55-03 1 DECAL, HYDROGEAR

NEED MORE HELP?

You'll find the answer and more on managemyhome.com - **for free!**

- Find this and all your other product manuals online.
- Get answers from our team of home experts.
- Get a personalized maintenance plan for your home.
- Find information and tools to help with home projects.

manage  home

brought to you by Craftsman

Get it fixed, at your home or ours!

Your Home

For repair - **in your home** - of all major brand appliances, lawn and garden equipment, or heating and cooling systems, **no matter who made it, no matter who sold it!**

For the replacement parts, accessories and owner's manuals that you need to do-it-yourself.

For Sears professional installation of home appliances and items like garage door openers and water heaters.

1-800-4-MY-HOME® Anytime, day or night
(1-800-469-4663) (U.S.A. and Canada)
www.sears.com **www.sears.ca**

Our Home

For repair of carry-in products like vacuums, lawn equipment, and electronics, call or go on-line for the nearest **Sears Parts and Repair Center**

1-800-488-1222 Anytime, day or night (U.S.A. only)
www.sears.com

To purchase a protection agreement (U.S.A.) or maintenance agreement (Canada) on a product serviced by Sears:

1-800-827-6655 (U.S.A.) **1-800-361-6655** (Canada)

Para pedir servicio de reparación a domicilio, y para ordenar piezas:

1-888-SU-HOGAR®
(1-888-784-6427)

Au Canada pour service en français:

1-800-LE-FOYER^{MC}
(1-800-533-6937)
www.sears.ca

Sears

© Sears Brands, LLC

® Registered Trademark / ™ Trademark / ™ Service Mark of Sears Brands, LLC

® Marca Registrada / ™ Marca de Fábrica / ™ Marca de Servicio de Sears Brands, LLC

^{MC} Marque de commerce / ^{MD} Marque déposée de Sears Brands, LLC