

## Installation Guide



## Table of Contents

<b>TABLE OF CONTENTS</b> .....	<b>2</b>
<b>GENERAL INFORMATION</b> .....	<b>3</b>
<b>REQUIRED KIT NUMBERS</b> .....	<b>3</b>
<b>REQUIRED TOOLS</b> .....	<b>3</b>
<b>SC66/83 ACCEPTOR REMOVAL</b> .....	<b>3</b>
<b>EASITRAX SC HARDWARE INSTALLATION</b> .....	<b>3</b>
<b>EASITRAX SC SOFTWARE CONFIGURATION</b> .....	<b>6</b>
<b>MMI CODES</b> .....	<b>8</b>
<b>COMPLIANCE</b> .....	<b>9</b>

## General Information

This document contains information for installing the MEI easitrax SC hardware and configuration of the software that will support a retrofit application of the SC66/83 bill acceptor with RFID.

**NOTE:** Only properly trained technicians certified by MEI are authorized to install the retrofit hardware. Installations performed by anyone else may void the warranty and the grant to use this equipment.

## Required Kit Numbers

easitrax SC upgrade kit. Qty. 1  
Part number - **91702200P10**

Contains:

- 10 Antenna PCBs
- 10 easitrax SC cashbox labels
- 10 FCC ID labels
- 10 Alcohol wipes.
- 10 RF tags
- 30 Plastic standoffs (pre-installed on antenna PCB)
- 60 Plastic screws (pre-installed on antenna PCB)
- 20 Ferrite's

## Required Tools

Regular blade screwdriver size 1/8"

## SC66/83 Acceptor Removal

1. Turn power off to the Slot machine
2. Remove the current MEI SC bill acceptor from the slot machine.
3. Remove the Interface PCB from the chassis.

## Easitrax SC Hardware Installation

**Note:** The Antenna PCB will come packaged with the standoffs and screws already mounted. Remove the screws from the end of the standoffs that are not mounted to the PCB. These screws were installed for shipping purposes only, and you will use these screws in the steps that follow.

1. If you haven't done so yet, read the note above and remove the three screws from the standoffs as described.

2. Use fig.1 below as a guide to line up the pins that are on the top of the antenna PCB with the matching holes that are located on the bottom of the Interface PCB. Mate the PCBs together by pressing the PCBs together.
3. Use the screws from step one and mount the topside of the antenna PCB to the bottom side of the SC series interface PCB.

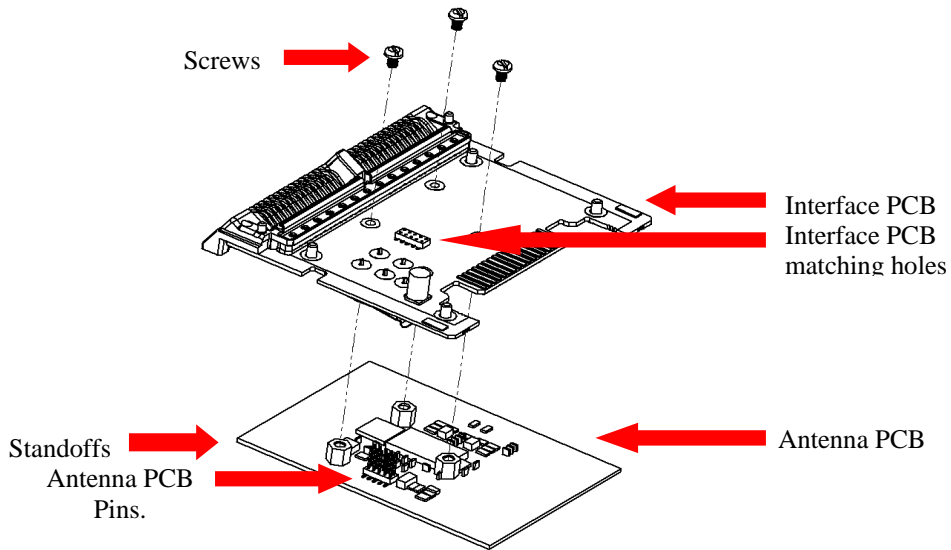


fig.1

4. Reinstall the Interface/Antenna PCB back into the chassis as shown in fig.2A
5. Apply the **FCC ID label** to the top of the chassis. See fig.2B

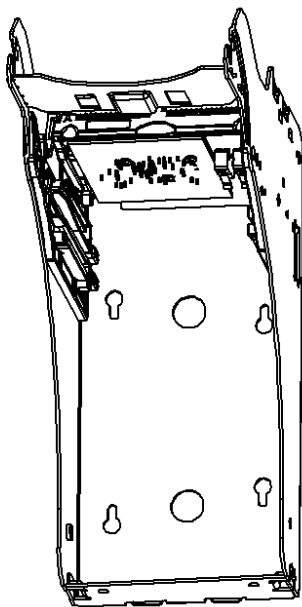


fig.2A

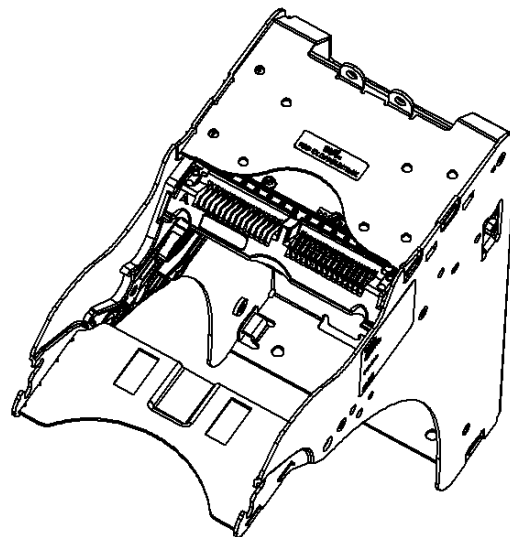


fig.2B

6. Open the cashbox door and remove the yellow pressure plate and spring by sliding it out.
7. Using an alcohol wipe, clean the area where the RF tag will be mounted that is shown in fig. 3.

**Note:** Allow alcohol to completely dry before mounting the RF tag into position.

8. Mount the RF tag and reinstall the pusher plate and spring. See fig.3

**Note:** Mount the RF tag in the location shown to ensure proper communication with the antenna board.

9. Mount the easitrax SC label, locating it just above the bottom of the yellow cashbox handle. See fig.3

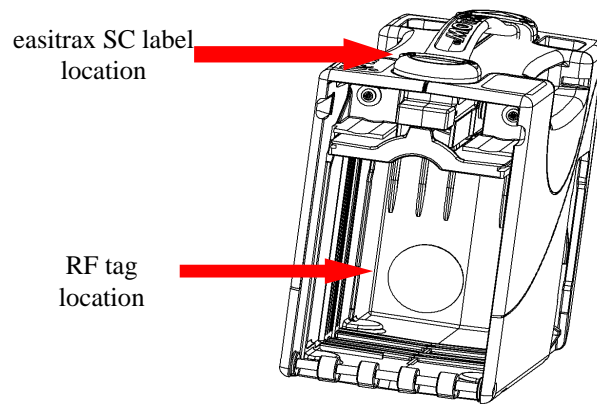


fig.3

10. Install the two ferrite's onto the interface harnessses as shown in fig. 4A and 4B. fig 4A is for 6602's, and Fig. 4B is for 6604's and 6607's.
11. Enclose the yellow sheathed harness together in one ferrite and the black and white harnesses together in the other ferrite for the 6604 and 6607 Interface harness. See fig. 4B
12. For the 6602 Interface harness, cut the two black tie-raps that hold the USB and yellow sheathed harness together.
13. After the tie-raps have been removed, mount the two ferrites to the harness's as shown in fig. 4A. Place one ferrite around the yellow sheathed harness and the second ferrite around the three remaining black harness's.



fig.4A

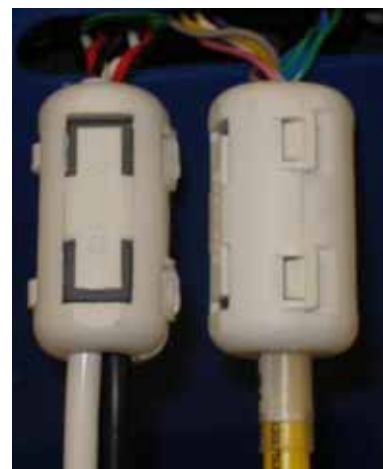
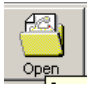



fig. 4B

## Easitrax SC Software Configuration

1. Open the STS program and connect to the SC series bill acceptor through the USB port.
2. Select the open  button from the main screen as shown in fig. 4
3. Select the approved .xcf easitrax SC software file that is approved for your jurisdiction and click OK.
4. Select the edit  box for the cashbox settings . See fig.4

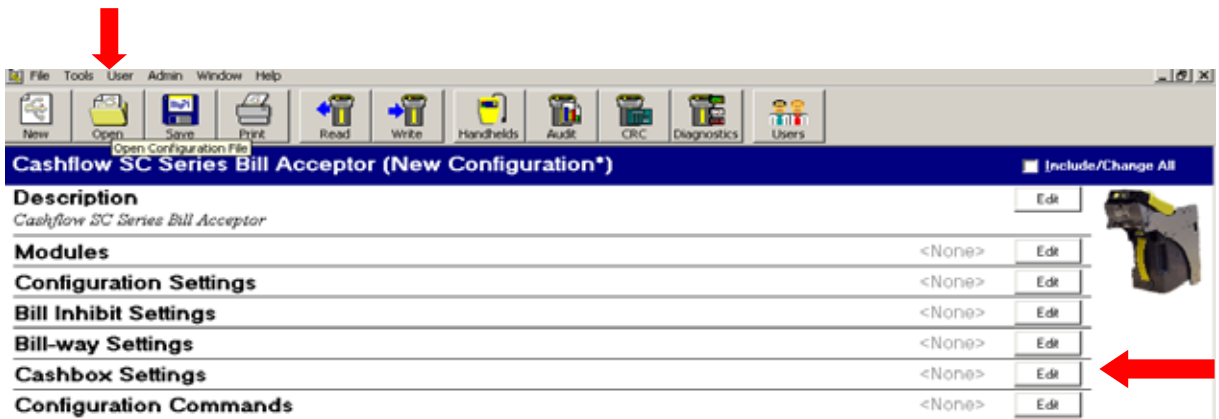


fig.4

5. Select the include/change box and type in the machine asset number and select OK. See fig. 5

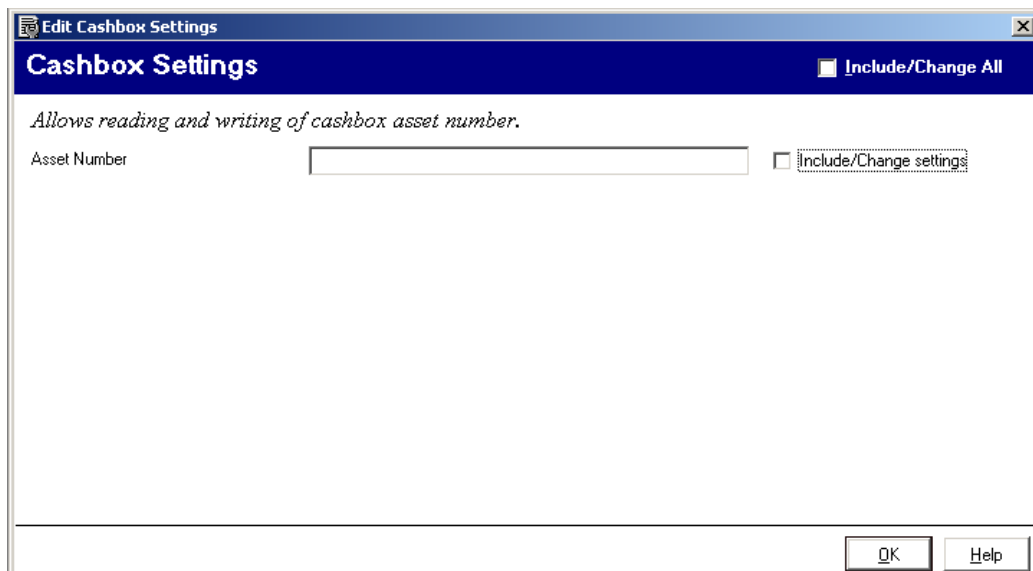



fig.5

6. The machine asset number that you typed will now show under the cashbox settings section.

**Note:** The machine's asset number will now be assigned to that particular cashbox and will be referred to as the cashbox asset number in fig.5.

7. Select the write button  from the main screen. See fig.6

8. Wait for the SC66 to perform a run &stack. The software configuration is complete.

9. Select the read  button and verify the machine asset number is correctly displayed under the cashbox settings section.

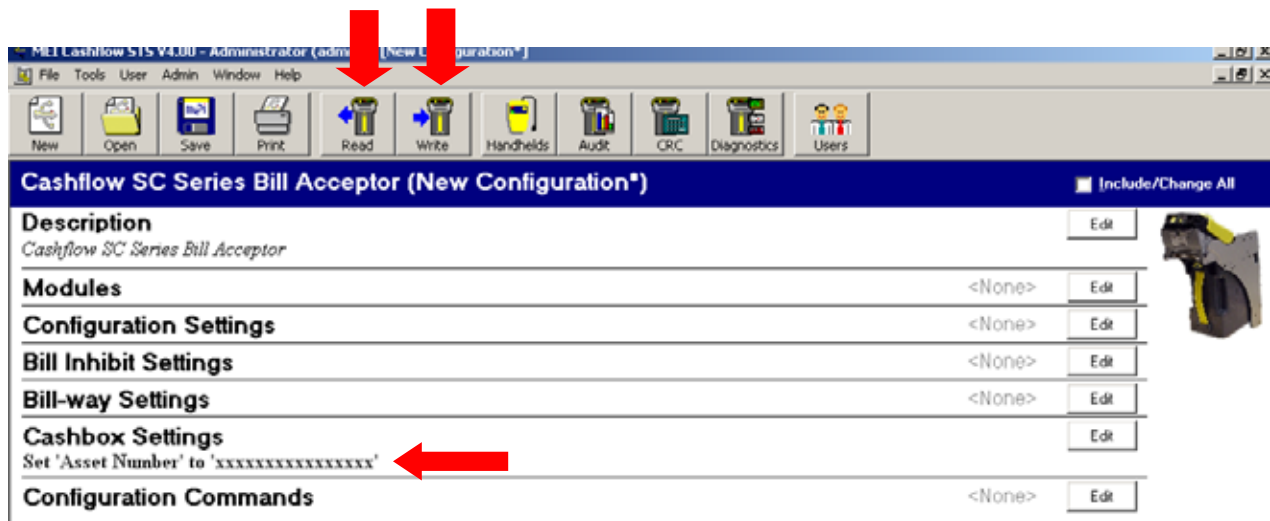


fig. 6

## MMI Codes

ENABLED / DISABLED?	MMI CODE	ACTION / RESULT
DISABLED	5 RED BLINKS	NO RF TAG DETECTED
ENABLED	GREEN	HEAD, BLOCK 1 AND BLOCK 2 CONTAIN CORRECT ASSET NUMBER
ENABLED	GREEN	HEAD, BLOCK 1 AND BLOCK 2 CONTAIN CORRECT ASSET NUMBER
ENABLED	GREEN	HEAD, BLOCK 1 AND BLOCK 2 CONTAIN CORRECT ASSET NUMBER
DISABLED	4 RED BLINKS	HOT BOX DETECTED
DISABLED	4 RED BLINKS	HOT BOX DETECTED
DISABLED	5 RED BLINKS	NO RF TAG DETECTED
ENABLED	GREEN	HEAD, BLOCK 1 AND BLOCK 2 CONTAIN CORRECT ASSET NUMBER
DISABLED	7 RED BLINKS	NO ASSET NUMBER IN HEAD
DISABLED	7 RED BLINKS	NO ASSET NUMBER IN HEAD
ENABLED	GREEN	HEAD, BLOCK 1 AND BLOCK 2 CONTAIN CORRECT ASSET NUMBER
ENABLED	GREEN	UNIT ENABLED: NO ASSET NUMBER IN BLOCK 1 AND BLOCK 2
DISABLED	5 RED BLINKS	NO RF TAG DETECTED
ENABLED	GREEN	HEAD, BLOCK 1 AND BLOCK 2 CONTAIN CORRECT ASSET NUMBER
DISABLED	7 RED BLINKS	NO ASSET NUMBER IN HEAD
DISABLED	7 RED BLINKS	NO ASSET NUMBER IN HEAD
ENABLED	GREEN	HEAD, BLOCK 1 AND BLOCK 2 CONTAIN CORRECT ASSET NUMBER
ENABLED	GREEN	NO ASSET NUMBER IN BLOCK 1 AND BLOCK 2 (PRODUCTION ONLY)



## **Compliance**

FCC ID: QP8EASITRAX

This device complies with part 15 of the FCC rules. Operation is subject to the following two conditions: This device may not cause harmful interference and this device must accept any interference received, including interference that may cause undesired operation.

**CAUTION:** Changes or modifications not expressly approved by the party responsible for compliance could void the user's authority to operate the equipment.