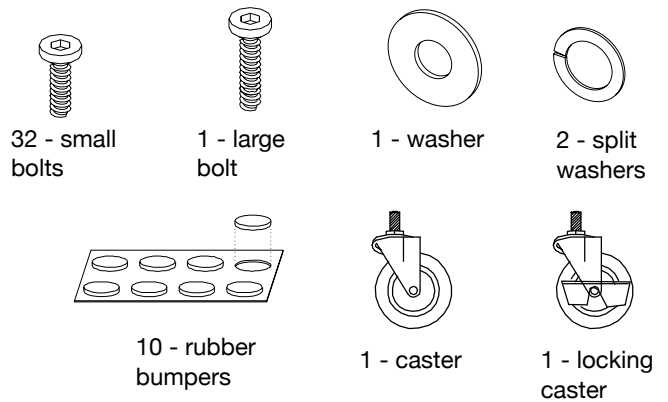


Thank you for purchasing the **Flex Desk**. This page lists all the contents included in the box. Please take time to identify the hardware as well as the individual components of this product. As you unpack and prepare for assembly, place the contents on a carpeted or padded area to protect them from damage.  
 Note: 2 people are required to safely assemble this product.

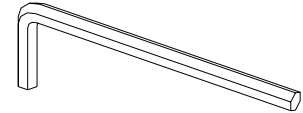
## HARDWARE



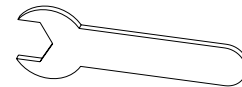
Missing hardware? Please call **800.606.6387** for replacements.

## TOOLS REQUIRED

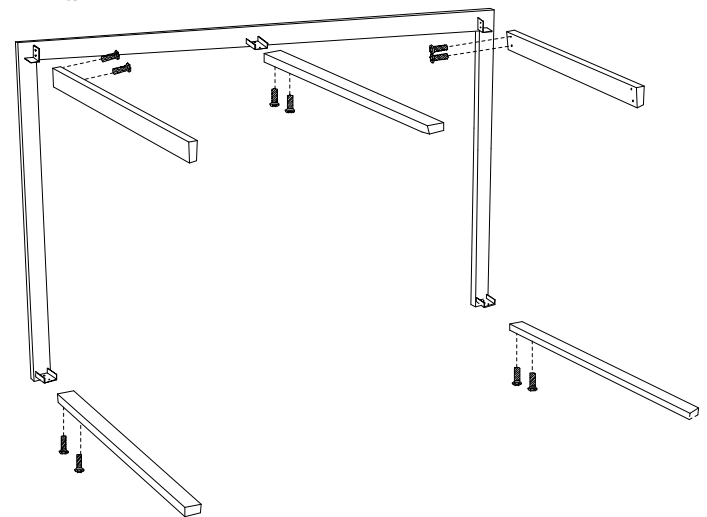
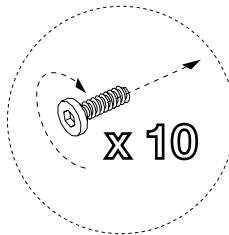
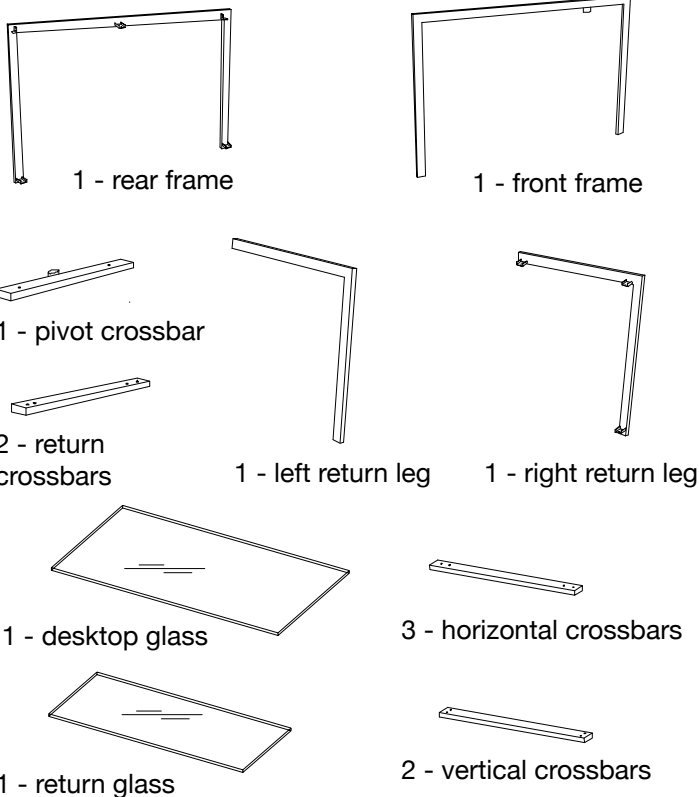
Allen Wrench (included)



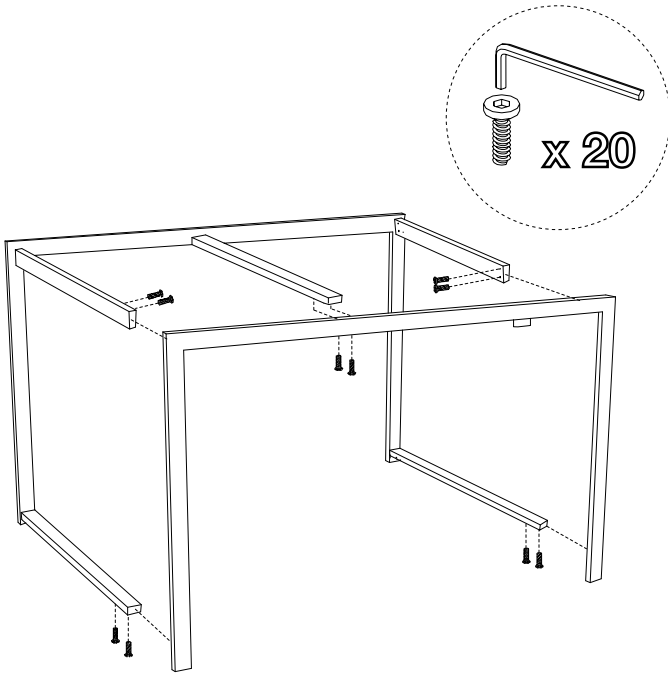
Hex Wrench (included)



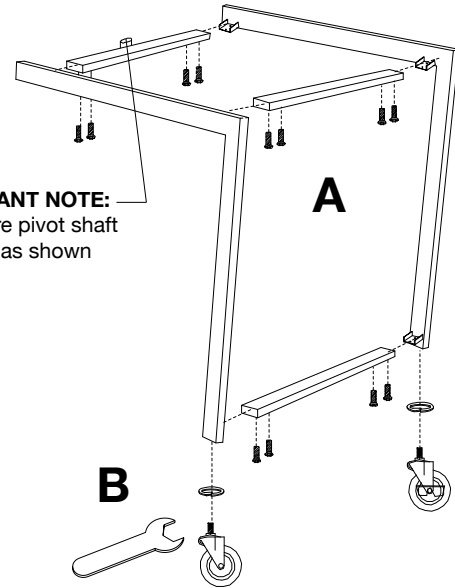
## COMPONENTS



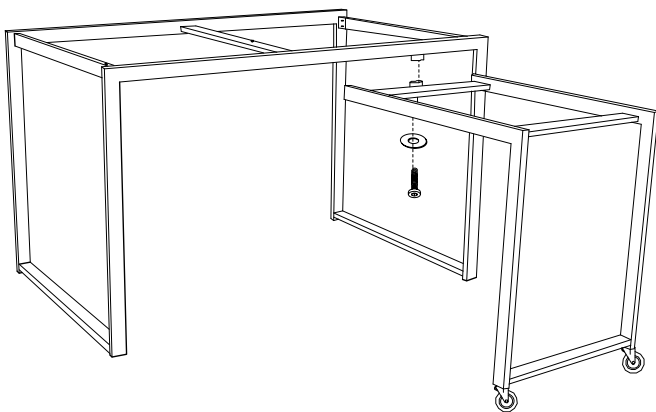
① Fit 3 **horizontal crossbars** and 2 **vertical crossbars** onto the brackets as shown. Loosely attach each crossbar with 2 **small bolts**. Do not fully tighten the bolts.



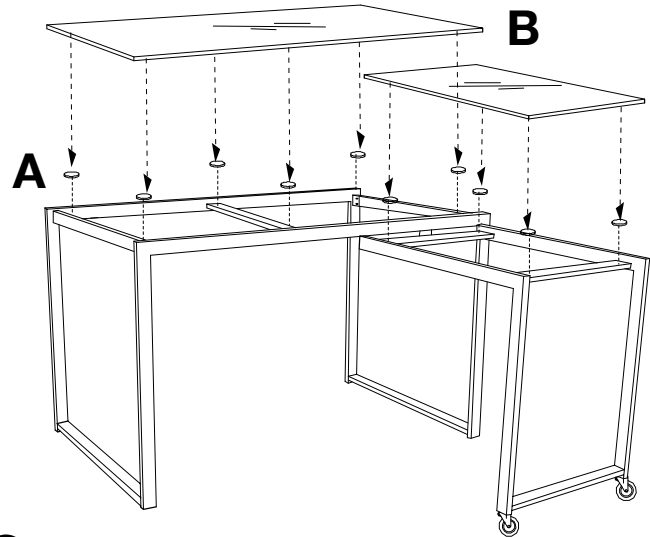
- ② Fit brackets of **front frame** into ends of crossbars. Secure each crossbar with 2 **bolts**, fully tightening with the **allen wrench**. At this point, fully tighten 10 bolts installed in Step 1 with the allen wrench.



- ③ A. Fit 2 **return crossbars** and 1 **pivot crossbar** onto corresponding brackets on the **right** and **left return frames** as shown. Secure with 4 **short bolts** per crossbar, fully tightening each with the **allen wrench**.  
 B. Insert 1 **caster** and 1 **split washer** into the bottom of one leg. In the other leg insert 1 **locking caster** and 1 **split washer**. Secure by turning each caster clockwise with the **hex wrench** until tight.



- ④ With the assistance of another adult, fit return assembly underneath desk assembly, aligning hole in pivot crossbar with hole in underside of front frame. Attach with 1 **long bolt** and 1 **flat washer**, securing with the allen wrench.



- ⑤ A. Adhere 10 **rubber bumpers** onto the crossbars as illustrated above.  
 B. Carefully place **desktop glass** and **return glass** into their respective positions, making sure each is firmly and evenly supported by the bumpers.  
 Assembly is now complete.

## CLEANING AND CARE

Clean surfaces with a dry or damp soft cloth. Do not use abrasive cleaners.