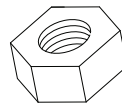


Thank you for purchasing the **Summit Extension Dining Table**. This page lists all the contents included in the box. Please take time to identify the hardware as well as the individual components of this product. As you unpack and prepare for assembly, place the contents on a carpeted or padded area to protect them from damage.

Note: 2 people are required to safely assemble this product.

HARDWARE



8 - hex nuts



8 - spring washers

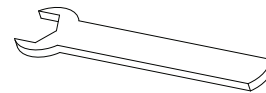


8 - flat washers

Missing hardware?

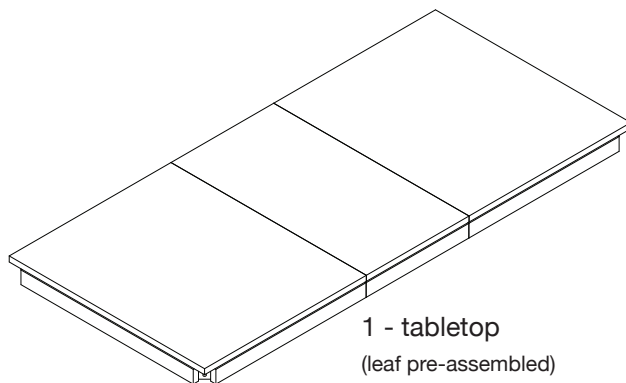
Please call **800.606.6387** for replacements.

TOOLS REQUIRED

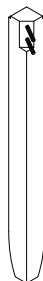


hex wrench (included)

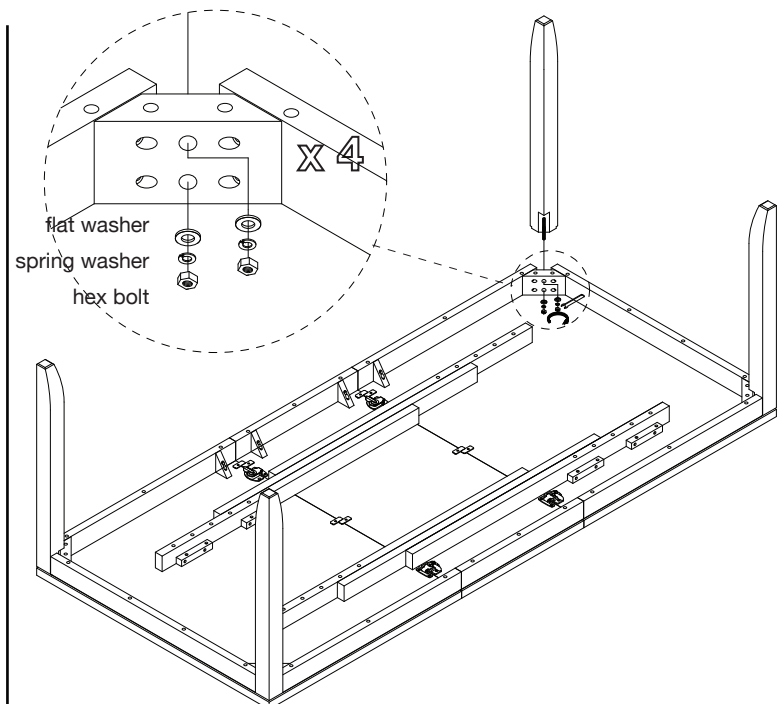
COMPONENTS



1 - tabletop
(leaf pre-assembled)

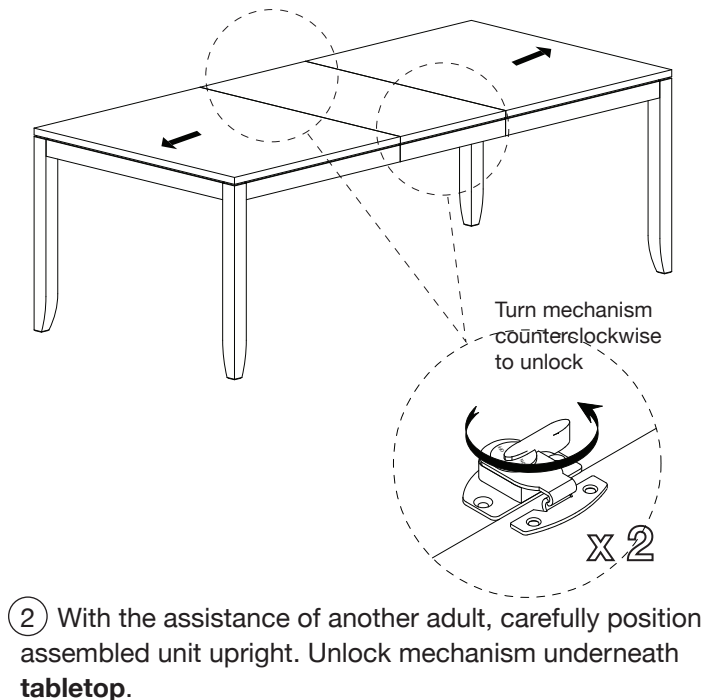


4 - legs

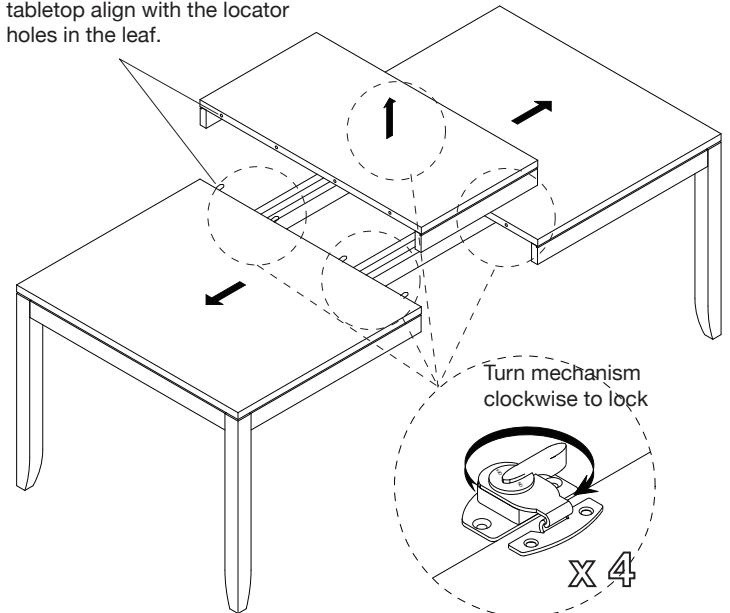


- 1 With the assistance of another adult, carefully place **tabletop** upside down onto a clean, padded surface. Loosely attach each leg with 2 **hex nuts**, 2 **spring washers**, and 2 **flat washers** as shown.

REMOVING LEAF ASSEMBLY



Make sure pins in the tabletop align with the locator holes in the leaf.



- ③ With the assistance of another adult, pull apart **tabletop** evenly on each side and remove **leaf**. Make sure to detach pins in the tabletop from the leaf. Push ends of tabletop back together and lock mechanisms underneath tabletop. Assembly is now complete.

CLEANING AND CARE

Clean surfaces with a dry or damp soft cloth. Do not use abrasive cleaners. Do not use furniture wax or polish as the wood is finished with a protective clear lacquer.