



Sound Blaster World of Warcraft Wireless Headset User's Guide

Congratulations!

Experience the sounds of Azeroth and beyond as never before with the Sound Blaster® World of Warcraft® Wireless Headset! Designed specifically for World of Warcraft gamers and includes cutting edge uncompressed wireless technology and THX TruStudio PC, the World of Warcraft Wireless Headset truly adds an amazing level of realism through unrivalled headphone surround and gaming sound enhancement technologies.

System Requirements

Minimum Requirements

- 600 MB of free hard disk space
- Available USB 1.1 or 2.0 port
- Internet connection to download drivers and application available for this product

For Windows

- Microsoft® Windows® 7 32-bit or 64-bit, Windows Vista® 32-bit or 64-bit with Service Pack 1 or higher, Windows XP Professional x64 Edition, Windows XP with Service Pack 2 or higher, Windows XP Media Center Edition (MCE) 2004 or later
- Intel® Pentium® 4 or AMD® equivalent processor, 1.6 GHz or faster
- Intel, AMD or 100% compatible motherboard chipset
- 512 MB RAM

For Mac

- Mac OS X 10.4.11 or later
- PowerPC G5 or Intel Core Duo processor, 1.6 GHz or faster
- 1 GB RAM

Recommended Requirements

For Windows

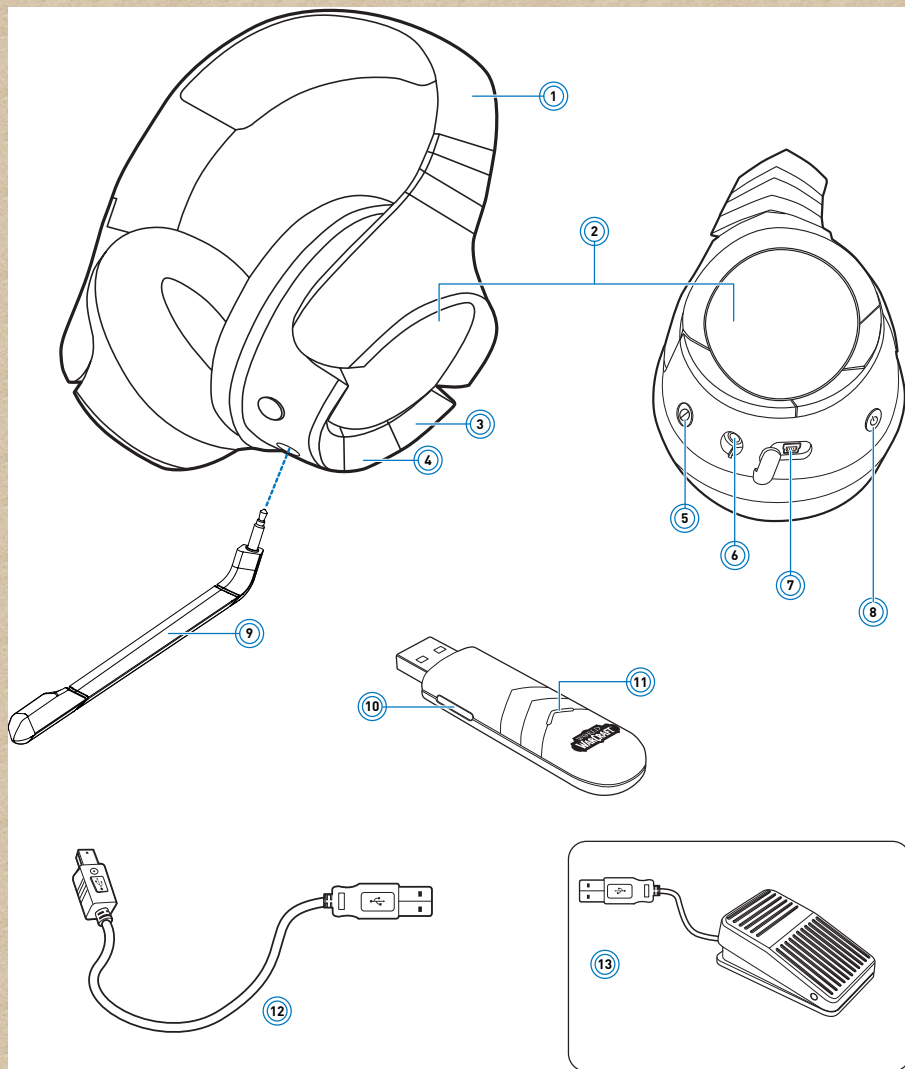
- Intel® Core™ 2 Duo or AMD® equivalent processor, 2.0 GHz or faster
- 1 GB RAM

For Mac

- Intel Core Duo processor 1.8 GHz or faster
- 2 GB RAM

NOTE Due to programming changes, the minimum system requirements for the software may change over time.

About Your Headset



Headset

- 1 Adjustable headband
- 2 Interchangeable “Glyph” ear cup lens
- 3 Volume up button
- 4 Volume down button
- 5 Microphone Mute/Connect button
- 6 Microphone jack
- 7 Mini-USB charging port
- 8 Power LED button
- 9 Detachable microphone

USB Wireless Transmitter

- 10 Connect button
- 11 Connect LED
Lights up blue when wireless streaming is enabled and ready. Flashes blue when the Connect button is pressed to indicate pairing with a wireless receiver or other supported device.
- 12 Mini-USB-to-USB cable
Connects your headset to your computer for charging the battery.

Foot Switch (sold separately)

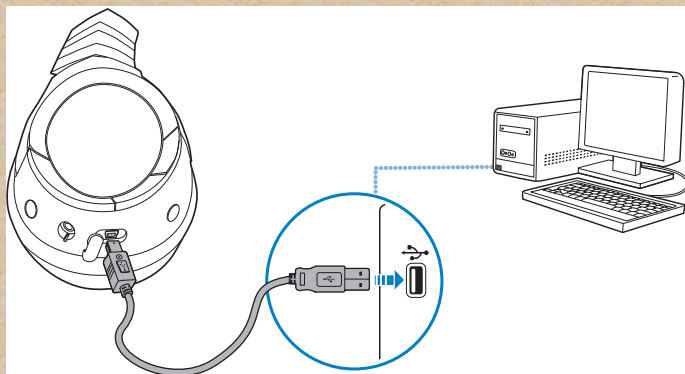
- 13 Foot Switch
Press to activate the key that is assigned to it.

Setting Up Your Headset

Before using your headset, you should install the drivers and applications for it by following the steps below. This enables you to enjoy the full features of your headset such as THX TruStudio PC audio enhancements and customizable LED colors.

Step 1: Charge your headset

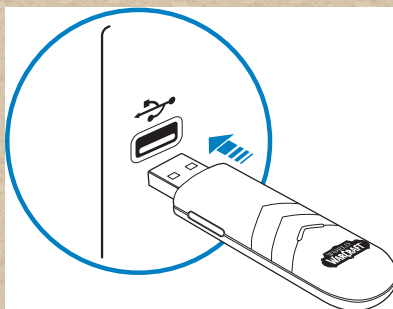
For first use, connect your headset to your computer's USB port using the USB power charging cable and charge for at least 2.5 hours. Turn off the headset while charging. The Power LED flashes red when charging, and lights up red when fully charged.



Step 2: Download the software

Visit www.soundblaster.com/products/wowheadset_wireless to download the latest drivers and applications available for your headset.

Step 3: Connect the transmitter to your computer's USB port



NOTE If prompted for the audio drivers, click the Cancel button.

Step 4: Installing the software

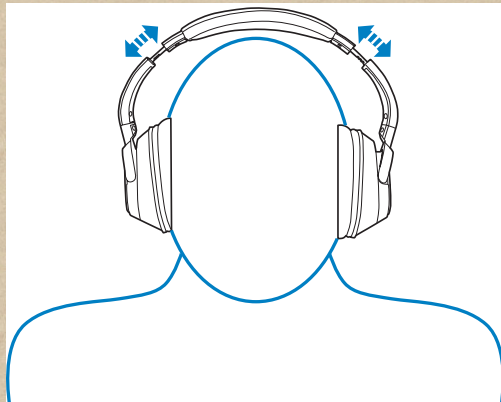
For all supported Windows OS

- 1 Navigate to the folder where you have downloaded the drivers and applications.
- 2 Double-click the downloaded file.
- 3 To complete the installation, follow the instructions on the screen.
- 4 When prompted, restart your computer.

After you have restarted your computer, you can launch the applications by clicking **Start ► Programs or All Programs ► Creative ► Sound Blaster World of Warcraft Wireless Headset ► Name of application**

Wearing the headset

Adjust the headband so that the headset rests lightly on your head. Do not tighten excessively.



CAUTION Adjust headset volume to a comfortable level. Do not listen to audio on your headset at high volumes for prolonged periods of time as hearing loss might result.

Using your headset while charging

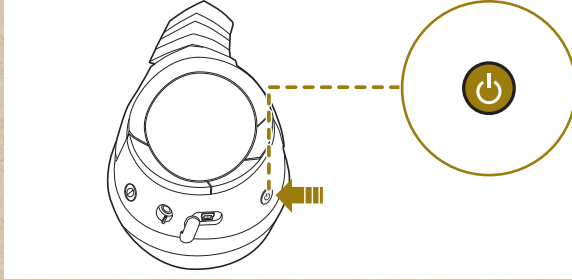
You can continue to use your headset even while it charges. The USB wireless transmitter must remain inserted in your computer's USB port. The Power LED flashes blue while charging and remains blue when fully charged.

Using the Wireless Features

The wireless capability gives you the convenience and freedom to move around up to a distance of 10 m away from the transmitter. After you have finished setting up your headset, you need to pair it with the transmitter by following the steps below.

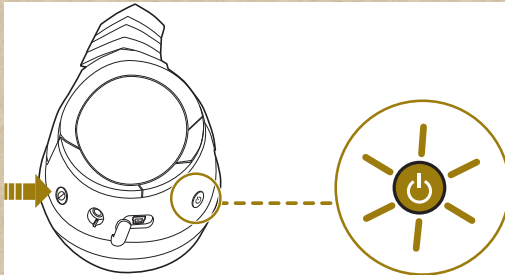
Step 1: Turn on the headset

Press the headset's Power button to turn it on. The Power LED lights up blue.



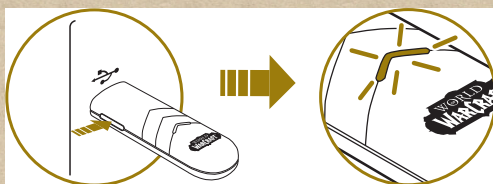
Step 2: Press the Connect button on the headset

Press and hold the headset's Connect button for three seconds. The Power LED flashes blue.



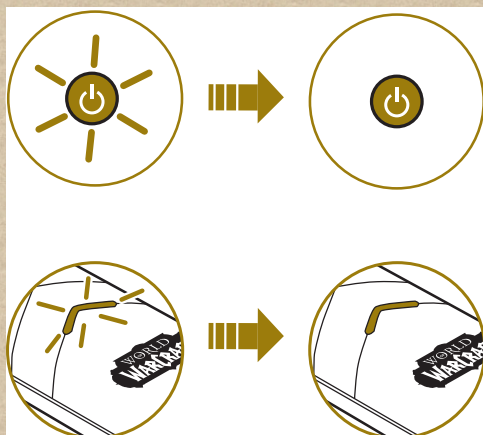
Step 3: Press the Connect button on the USB wireless transmitter

Press and hold the USB wireless transmitter's Connect button for three seconds. The Connect LED flashes blue.



Step 4: Successful Pairing

The Connect LED on both the headset and USB wireless transmitter stop flashing and remain on when paired.



World of Warcraft Audio Control Panel



- 1 Profile Selection bar
- 2 Save Profile button
- 3 Delete Profile button
- 4 Illumination settings
Adjust color, intensity and glow of your headset.
- 5 THX settings
Access your THX TruStudio PC settings.
- 6 Game Audio settings
Adjust VoiceFX and EQ settings
- 7 Key Bindings
Assign keys to certain functions.
- 8 Foot Switch settings
Assign a key to your foot switch.
- 9 General settings button
Change language settings or restore settings to their default values.
- 10 Microphone Volume
- 11 Master Volume

How to use Profiles

Managing your profiles

Activate a profile by clicking the Profile Selection bar and selecting it from the list. You can customize the avatar for each profile by double-clicking the picture and selecting another one from the list.

Click the Save Profile button to save all settings to a new or existing profile. Click the Delete Profile button to delete the active profile.

Illumination Settings



- 1 Illumination options
Lets you select the illumination style.
- 2 Illumination standby timer
Lets you conserve your headset battery power.
- 3 Color picker
Lets you select an illumination color. You can also enter the exact RGB values.
- 4 Pulsation slider
Changes the frequency at which the illumination fades on and off.
- 5 Intensity slider
Changes the brightness of the illumination.

How to use Illumination

Customizing the look of your headset

You can choose different colors to personalize the look of your headset's ear cups.

- Select the **Cycle through colors** option to switch among various preset colors at regular intervals.
- Select the **Select RGB color** option if you want to choose a specific color.

Use the color picker, or enter the exact Red, Green and Blue values to get the color you want.

Drag the Pulsation slider up to increase the frequency and down to decrease the frequency at which the illumination will fade on or off.

Drag the Intensity slider up to increase the brightness and down to decrease the brightness of the illumination.

THX TruStudio PC Settings



- 1 Audio Test controls
Play/Pause or Stop the demo video.
- 2 THX TruStudio PC settings
Select to enable or disable each feature.
- 3 Enhancement Level slider
Adjust the amount of enhancement to apply to your audio.

How to set THX TruStudio PC

Enhancing your audio experience

You can adjust the amount of enhancement to apply for each feature by dragging its slider left to decrease or right to increase. To test the effects of the audio enhancements, click the Play <icon> button to start playback of the demo video.

Game Audio Settings



- 1 VoiceFX settings
Select a World of Warcraft race voice effect to apply to your speech.
- 2 EQ presets settings
Select a preset to apply to your game audio.
- 3 EQ sliders
Lets you customize the equalizer settings.

How to change VoiceFX and EQ

Customizing your voice

Select a World of Warcraft racial voice preset to match your character's race, or have fun with other racial voice presets. Click the Enable VoiceFX drop-down arrow and select from the list.

Try out the selected racial voice preset by clicking the Test button and speaking into the microphone.

Customizing your EQ settings

Different equalizer presets are available to enhance the game audio. Click the Enable EQ drop-down arrow and select from the list.

Selecting an EQ preset will move the EQ sliders to the appropriate values. You can tweak the EQ level by dragging the sliders up and down to the desired level.

Key Bindings Settings



- 1 Tasks
Lets you select a task for key binding.
- 2 Key 1 field
Lets you assign a primary key to the task.
- 3 Key 2 field
Lets you assign a secondary key to the task.
- 4 Unbind Key button
Clears ALL your existing key bindings for the current profile.
- 5 Save button
Saves your existing key bindings to the current profile.

How to change Key Bindings

Adding tasks

Select a row and click the drop-down arrow that appears, then select a task from the list.

Assigning keys to tasks

Click the Key 1 or Key 2 field for that task, then press the key or combination of keys that you want to assign on your keyboard. If there is already a key assigned to that task, it will be replaced by the new one.

Foot Switch Settings (Optional - Foot Switch sold separately)

If you have the additional foot switch accessory, you can configure its functions under the Foot Switch settings.



- 1 Key Mapping field
Maps a key to your foot switch.

How to configure the Foot Switch

Assigning tasks to the foot switch

You can assign different tasks to the foot switch by entering the appropriate key combination. For example, you can assign the Push-to-Talk command to the foot switch.

Using Your Headset

Playing Games

Your headset is equipped with cutting edge audio technologies and software to enhance the audio in your games. THX TruStudio PC will elevate your gaming experience to the next level, hear the sounds of Azeroth like never before!

THX TruStudio PC

THX TruStudio PC is specially designed to bring the same great audio experience found in live performances, films, and recording studios – to the PC.

THX TruStudio PC Surround provides immersion control to enhance the natural sense of audio depth and spaciousness by creating virtual surround sound channels. Stereo content or multichannel content played over stereo speakers and headphones will sound as if it's coming from all sides while voices remained centered in front and original balance and timbre is preserved.

THX TruStudio PC Crystalizer restores the dynamic range that is lost when iTunes and MP3 music gets compressed. This makes the music sound as good as the artist originally intended, and adds an enhanced level of realism for movies and games.

THX TruStudio PC Bass fills in the low frequency tones and gives the extra impact for a better entertainment experience. Consumers no longer have to tolerate lack of bass in speakers built into notebook PCs, 2.0 speakers or headphones, as THX TruStudio PC Speaker technology dramatically improves the sound experience without a subwoofer.

THX TruStudio PC Dialog Plus enhances the voices in movies for clearer dialog, allowing the listener to hear the dialog over the rest of the soundtrack and over ambient noise in the listening environment.

THX TruStudio PC Smart Volume addresses the problem of abrupt volume level changes during playback and between songs by automatically and continuously measuring volume, and intelligently applying gain and attenuation to compensate for those changes.

Communicating with Voice over Internet Protocol (VoIP)

Use the headset to enjoy outstanding acoustic performance for your VoIP applications like Skype[®], or instant messaging applications like Yahoo![®] Messenger.

Software Suite

The included software is designed for you to access the basic as well as the advanced features of your audio device. For more information on each application, refer to its online help.

Creative Software Suite

For PC:

- World of Warcraft Audio Control Panel
- Creative ALchemy
- Creative System Information

Additional bonus software for your device is available at www.soundblaster.com.

Note on Creative ALchemy:

For systems running Windows 7 or Windows Vista, use Creative ALchemy to restore full surround sound and EAX[®] effects to World of Warcraft and other DirectSound[®]3D games.

- NOTE**
- The applications included with your audio device may differ from those listed here. Your audio device may also come with third party applications.
 - Some applications are available for certain operating systems only.

Troubleshooting

Problems with Multiple Audio Devices

The onboard audio chipset seems to be in conflict with Sound Blaster World of Warcraft Wireless Headset.

Disable your computer's onboard audio chipset. See your computer's motherboard documentation for details

Problems with Sound

No sound from the headset.

Check the following:

- The headset and transmitter are turned on.
- The headset has sufficient battery power.
- The volume settings in Audio Control Panel and system audio are properly adjusted and not muted.
- There is no hardware conflict between the headset and a peripheral device.

Game audio is not enhanced in Windows 7 and Windows Vista.

Do the following:

- Open the folder where your World of Warcraft application launcher is installed.
- Right-click the World of Warcraft application launcher and select Properties.
- Select the Compatibility tab, then select the Compatibility Mode checkbox.
- Click the Compatibility Mode drop-down arrow and select Windows XP (Service Pack 2), then click OK.
- Add the World of Warcraft application launcher to the Creative ALchemy program list.

Problems with Wireless Features

Electronic interference is occurring with other wireless devices.

Do the following:

- Set your wireless LAN router's channel to Auto, 1 or 11. To do this, refer to your router's user documentation.
- Place your transmitter away from other devices (for example, wireless routers) that transmit wireless signals.
- Place your transmitter or receivers away from large metal surfaces.
- Refrain from doing large file transfers via the wireless internet or Bluetooth connection while you are streaming music. Alternatively, stop streaming music during intensive file transfers.

Music is not being transmitted to my headset

Check the following:

- Your transmitter and your headset are turned on.

General Specifications

Connectivity

- One 3.5 mm (1/8") stereo jack for connecting the detachable microphone

Interfaces

- USB wireless transmitter for pairing with headset
- Mini-USB port on headset for charging the battery

Radio Frequency (RF)

- Operating RF range: 2400 - 2483.5 MHz
- Operating RF distance: up to 10 m
- Number of RF channels: 38
- RF transmitter power output: 0 dBm (typical)

NOTE You cannot tune the RF channels.

THX TruStudio PC Technology

- THX TruStudio PC Crystalizer
- THX TruStudio PC Surround
- THX TruStudio PC Bass
- THX TruStudio PC Dialog Plus
- THX TruStudio PC Smart Volume

Safety Information

Refer to the following information to use your product safely, and to reduce the chance of electric shock, short-circuiting, damage, fire, hearing impairment or other hazards. **Improper handling may void the warranty for your product. For more information, read the warranty available with your product.**

- Read these instructions.
 - Keep these instructions.
 - Heed all warnings.
 - Follow all instructions.
 - Do not use this apparatus near water.
 - Clean only with dry cloth.
 - Do not block any ventilation openings. Install the product in accordance with the instructions.
 - Do not install near heat sources such as radiators, heat registers, stoves, or other apparatus (including amplifiers) that produce heat.
 - Do not expose your product to temperatures outside the range of 0°C to 40°C (32°F to 104°F).
 - Do not pierce, crush or set fire to your product.
 - Keep your product away from strong magnetic objects.
 - Do not subject your product to excessive force or impact.
 - Do not defeat the purpose of the polarized or grounding-type plug. A polarized plug has two blades with one wider than the other. A grounding type plug has two blades and a third grounding prong. The wide blade or the third prong are provided for your safety. If the provided plug does not fit into your outlet, consult an electrician for replacement of the obsolete outlet.
 - Protect the power cord from being walked on or pinched particularly at plugs, convenience receptacles, and the point where they exit from the apparatus.
 - Only use attachments/accessories specified by the manufacturer.
 - Use only with the cart, stand, tripod, bracket or table specified by the manufacturer, or sold with the apparatus. When a cart is used, use caution when moving the cart/apparatus combination to avoid injury from tip-over.
 - Unplug this apparatus during lightning storms or when unused for long periods of time.
 - Do not dismantle or attempt to repair your product.
- Refer all servicing to authorized and qualified service personnel.** Servicing is required when the apparatus has been damaged in any way, such as power-supply cord or plug is damaged, liquid has been spilled or objects have fallen into the apparatus, the apparatus has been exposed to rain or moisture, does not operate normally, or has been dropped.
- **WARNING:** To reduce the risk of fire or electric shock, do not expose your product to water or moisture. If your product is moisture-resistant, take care not to immerse your product in water or expose it to rain.

Earphones

- When a conductive apparatus, such as earphones, is used in close proximity with a CRT television or CRT monitor, the latter may emit an electrostatic discharge. The electrostatic discharge can be felt as a static shock. While this static shock is usually harmless, it is good practice to avoid close contact with CRT devices when using earphones.
- Do not listen to audio on your earbuds or headphones at high volume for prolonged periods of time as hearing loss may result. For users in the United States, go to www.hei.org for more information.
- Do not attempt to remove the embedded battery. Your product must be disposed of according to local environmental regulations. To replace the battery, return your product to your regional support office. For product service information, go to www.creative.com.
- Do not listen to your audio device at high volume when driving, cycling or crossing the road, especially in heavy traffic, or in any other traffic condition where such use will hinder safe travel on the roads. We recommend that consumers be extremely cautious when using this device on the road.

Embedded Battery

- Do not attempt to remove the embedded battery. The product must be disposed of according to local environmental regulations. To replace the battery, return your product to your regional support office. For product service information, go to www.creative.com.

Removable Battery

- The battery must be recycled or disposed of properly. Contact local agencies for recycling and disposal information.
- Do not allow metal objects to touch the terminals of your battery.
- If there is leakage, an offensive odor, discoloration or deformation during charging or use, remove the battery and do not use it again. Clean your hands well before touching food or sensitive areas, for example, your eyes.

Wireless Device

- Switch off the device where it is prohibited, or when its use may cause danger or interference such as inside an aircraft, hospitals, or near refuelling points.

WEEE DIRECTIVE 2002/96/EC



The use of the WEEE Symbol indicates that this product may not be treated as household waste. By ensuring this product is disposed of correctly, you will help protect the environment. For more detailed information about the recycling of this product, please contact your local authority, your household waste disposal service provider or the shop where you purchased the product.

BATTERIES DIRECTIVE 2006/66/EC



For Removable Battery

This product may contain one or more of the following removable batteries: Li-ion/polymer, button/coin cells, cylindrical cells. In this case, the following applies: The crossed-out wheeled bin symbol indicates that the battery in this product should not be treated as unsorted municipal waste upon reaching its end of life. Instead it should be taken to separate collection and recycling schemes. Batteries containing heavy metal content will have a two-letter symbol for the chemical under the crossed-out wheeled bin symbol. 'Cd' stands for cadmium, 'Pb' for lead, and 'Hg' for mercury. You can help the environment and avoid public health hazards by recycling the battery at an authorized recycling facility or the place of purchase. To find the nearest authorized recycle centre contact your local authority. Instructions for removing the battery can be found in the product user manual. The instructions should be followed carefully before attempting to remove the battery.

For Integrated Battery

This product may contain a Lithium ion/polymer battery that should only be removed by an authorized recycling centre. By recycling this product at your local authorized recycling centre or the place of purchase, the battery will be removed and recycled separately.

IMPORTANT — A LIRE AVEC ATTENTION

Ecouter de manière prolongée, à un très haut volume sonore de la musique (au dessus de 80 décibels), au moyen d'un casque ou d'écouteurs, peut entraîner une détérioration irréversible et définitive de vos facultés auditives. L'usage répété et habituel d'un casque ou d'écouteurs à un niveau de volume sonore trop élevé peut donner l'impression à l'utilisateur que le volume sonore émis par l'appareil n'est pas suffisant. L'utilisateur sera tenté d'augmenter, petit à petit, son réglage habituel, risquant ainsi d'atteindre un niveau dangereux pour ses oreilles. Afin de protéger votre santé, et vos oreilles, veillez à maintenir le volume de la sortie casque de votre appareil à un niveau adapté et à interrompre son utilisation régulièrement et particulièrement si des symptômes, comme des troubles de l'ouïe, se manifestent.

N'utilisez pas le casque ou les écouteurs pendant la conduite d'une voiture, d'une bicyclette ou de tout autre véhicule motorisé, afin d'éviter tout accident de la circulation. En outre, il est interdit dans certains pays d'utiliser un casque ou des écouteurs en conduisant. Il peut être également dangereux d'écouter à volume élevé tout en marchant, spécialement aux passages piétons. Soyez toujours extrêmement prudent et cessez d'utiliser cet appareil dans les situations présentant des risques d'accident.

Évitez d'utiliser le casque ou les écouteurs à volume élevé. Les médecins spécialistes de l'audition déconseillent une écoute continue à volume trop élevé. Si vous percevez un sifflement dans les oreilles, réduisez le volume ou cessez l'écoute.

Maintenez un volume d'écoute modéré. Vous pourrez ainsi entendre les sons extérieurs et être attentif aux gens qui vous entourent.

Votre produit Creative accompagné des écouteurs fournis, est conforme à la réglementation française concernant les baladeurs musicaux (Arrêté du 24 Juillet 1998). Les caractéristiques techniques de ces écouteurs se trouvent dans le manuel en ligne et/ou sur le site internet de Creative. Si vous choisissez d'utiliser un autre casque ou d'autres écouteurs, veuillez vous assurer au préalable que leurs caractéristiques techniques soient les mêmes.

срок эксплуатационной долговечности

В соответствии с законодательством Российской Федерации компания Creative устанавливает для данного товара срок службы 2 года. Указанный срок – это период времени, в течение которого компания Creative гарантирует возможность использования продукции в соответствии с ее назначением. Кроме того, во время этого срока компания Creative гарантирует:

(i) безопасность товара, (ii) возможность выполнения его ремонта и получения технической поддержки, (iii) поставку запасных частей. Однако установление срока службы не означает автоматического бесплатного предоставления технической поддержки и обслуживания. Эти виды услуг предоставляются бесплатно только в течение гарантийного периода в соответствии с гарантийными обязательствами.

Declaration of Conformity

According to the FCC96 208 and ET95-19

Manufacturer/Importer's Name: Creative Labs, Inc.

Manufacturer/Importer's Address: **1901 McCarthy Boulevard**

Milpitas, CA. 95035

United States

Tel: (408) 428-6600

declares under its sole responsibility that the product

Trade Name: **Creative Labs**

Model Numbers: **SB1120**

has been tested according to the FCC / CISPR22/97 requirement for Class B devices and found compliant with the following standards:

EMI/EMC: ANSI C63.4 2003, FCC Part 15 Subpart B & C

Complies with Canadian ICES-003 Class B

This device complies with part 15 of the FCC Rules.

Operation is subject to the following two conditions:

This device may not cause harmful interference, and

This device must accept any interference received, including interference that may cause undesirable operation.

Ce matériel est conforme à la section 15 des règles FCC.

Son Fonctionnement est soumis aux deux conditions suivantes:

Le matériel ne peut être source D'interférences et

Doit accepter toutes les interférences reçues, Y compris celles pouvant provoquer un fonctionnement indésirable.

Compliance Manager

Creative Labs, Inc.

January 24, 2007

Regulatory Information

Notice for the USA

FCC Part 15: This equipment has been tested and found to comply with the limits for a Class B digital device, pursuant to Part 15 of the FCC Rules. These limits are designed to provide reasonable protection against harmful interference in a residential installation. This equipment generates, uses and can radiate radio frequency energy and, if not installed and used in accordance with instructions, may cause harmful interference to radio communications. However, there is no guarantee that interference will not occur in a particular installation. If this equipment does cause harmful interference to radio or television reception, which can be determined by turning the equipment off and on, the user is encouraged to try to correct the interference by one or more of the following measures:

- Reorient or relocate the receiving antenna.
- Increase the separation between the equipment and receiver.
- Connect the equipment into an outlet on a circuit different from that to which the receiver is connected.
- Consult the dealer or an experienced radio/TV technician for help.

This device complies with part 15 of the FCC Rules. Operation is subject to the following two conditions:

- 1 This device may not cause harmful interference, and
- 2 This device must accept any interference received, including interference that may cause undesired operation.

CAUTION: To comply with the limits of the Class B digital device, pursuant to Part 15 of the FCC Rules, this device must be installed with computer equipment certified to comply with Class B limits.

All cables used to connect to the computer and peripherals must be shielded and grounded. Operation with non-certified computers or non-shielded cables may result in interference to radio or television reception.

MODIFICATION: Any changes or modifications not expressly approved by the grantee of this device could void the user's authority to operate the device.



WARNING: To satisfy FCC RF exposure requirements for mobile transmitting devices, a separation distance of 20 cm or more should be maintained between the antenna of this device and persons during device operation.

To ensure compliance, operations at closer than this distance is not recommended. The antenna used for this transmitter must not be co-located in conjunction with any other antenna or transmitter.

California Proposition 65 Statement

WARNING: Handling this product may expose you to chemicals known to the State of California to cause cancer and birth defects or other reproductive harm.

Wash hands after handling.

Explanatory Note: California Safe Drinking Water and Toxic Enforcement Act of 1986 (Proposition 65) requires special product labeling for products containing certain chemicals known to the State of California to cause cancer, birth defects or other reproductive harm. Creative has chosen to provide a warning based on its knowledge about the presence of one or more listed chemicals without attempting to evaluate the level of exposure. With Creative's products, the exposure may be below the Proposition 65 level of concern, or could even be zero. However, out of an abundance of caution, Creative has elected to place the Proposition 65 warning on its products.

Déclaration de la Proposition 65 de la Californie

AVERTISSEMENT: La manipulation de ce produit peut vous exposer à des produits chimiques qui sont reconnus par l'État de la Californie comme pouvant provoquer le cancer, des anomalies congénitales ou d'autres effets nuisibles à la reproduction.

Veillez vous laver les mains après l'avoir manipuler.

Note explicative: La Proposition 65 [California Safe Drinking Water and Toxic Enforcement Act of 1986] de la Californie sur les matières dangereuses et l'eau potable exige un étiquetage spécial pour les produits contenant certains produits chimiques qui sont reconnus par l'État de la Californie comme pouvant provoquer le cancer, des anomalies congénitales ou d'autres effets nuisibles à la reproduction. Creative a choisi d'inclure une mise en garde s'appuyant sur sa connaissance de la présence d'un ou de plusieurs de ces produits chimiques sans essayer d'en évaluer le niveau d'exposition. Pour les produits de Creative, le niveau d'exposition peut être inférieur au niveau critique établi par la Proposition 65 ou même être nul. Néanmoins, par souci extrême de prudence, Creative a choisi de placer l'avertissement de la Proposition 65 sur ses produits.

European Compliance

This product conforms to the following:

EMC Directive 89/336/EEC as amended by 92/31/EEC and 93/68/EEC.

Mains operated products for the European market comply with Low Voltage Directive 2006/95/EC.

Communication / RF wireless products for the European market comply with R&TTE Directive 1999/5/EC.

CAUTION: To comply with the Europe CE requirement, this device must be installed with CE certified computer equipment which meet with Class B limits.

All cables used to connect this device must be shielded, grounded and no longer than 3m in length.

Operation with non-certified computers or incorrect cables may result in interference to other devices or undesired effects to the product.

MODIFICATION: Any changes or modifications not expressly approved by Creative Technology Limited or one of its affiliated companies could void the user's warranty and guarantee rights.

Information in this document is subject to change without notice and does not represent a commitment on the part of Creative Technology Ltd. No part of this manual may be reproduced or transmitted in any form or by any means, electronic or mechanical, including photocopying and recording, for any purpose without the written permission of Creative Technology Ltd.

Copyright © 2009 Creative Technology Ltd. All rights reserved. Creative, the Creative logo, Sound Blaster, the Sound Blaster logo, Creative ALchemy are trademarks or registered trademarks of Creative Technology Ltd. in the United States and/or other countries. THX TruStudio PC logo, World of Warcraft, World of Warcraft logo and all other trademarks are properties of their respective owners. All specifications are subject to change without prior notice. Use of this product is subject to a limited hardware warranty. Actual contents may differ slightly from those pictured. The software included in this packaging may not be used separately from the hardware. Before using the software, you must agree to be bound by the terms and conditions of the end user license agreement.

Version 1.0

November 2009