

CREATIVE®

Sound
BLASTER **EVO**

W I R E L E S S



User's Guide
Model No.: GH0270



Congratulations!

Thank you for choosing the Sound Blaster EVO Wireless entertainment headset.

Connect it to a computer and you are about to experience the legendary audio quality of Sound Blaster. The EVO Wireless meets the needs of today's mobile consumers by enhancing compressed audio from online sources.

It's wireless too; NFC makes pairing your smart device with the Evo Wireless via *Bluetooth* amazingly easy. Beyond that, the beam-forming dual microphone array guarantees crystal clear communication in any environment.

Package Checklist

Your Sound Blaster EVO Wireless package comes with the following:

- The Sound Blaster EVO Wireless
- MicroUSB-to-USB cable - Length: 1.8m (5.91ft)
- 4-pole analog cable - Length: 1.2m (3.94ft)
- Travel carry case
- Quick Start leaflet

Minimum System Requirements

- Intel Core™2 Duo processor 2.2 GHz, AMD Athlon 64x2 Dual Core or equivalent processor
- Microsoft® Windows® 8 64-bit or 32-bit, Windows 7 64-bit or 32-bit, Windows Vista 64-bit or 32-bit; Macintosh OS 10.5.8 and above
- 1GB RAM
- Powered USB 2.0/3.0 port

Note:

Due to programming changes, the recommended system requirements for the software and applications may change over time.

More Help

For the latest news and products for the Sound Blaster, please visit www.soundblaster.com. The site also includes information on making purchases, technical help and the latest software updates.

Alternatively, click on the Resources icon at the bottom of Sound Blaster EVO Control Panel to find out more about Sound Blaster and your product.

Using Creative Software AutoUpdate

Locating, downloading and installing updates for your Creative products is now simpler and faster with the web-based Creative Software AutoUpdate system.

When you connect to Creative Software AutoUpdate via the Internet, the website will analyze your computer system to determine your operating system, language and which Creative products are connected to your system.

When this analysis is completed, you will then be given a list of only the most relevant software updates for your connected products. The files can then be retrieved and installed.

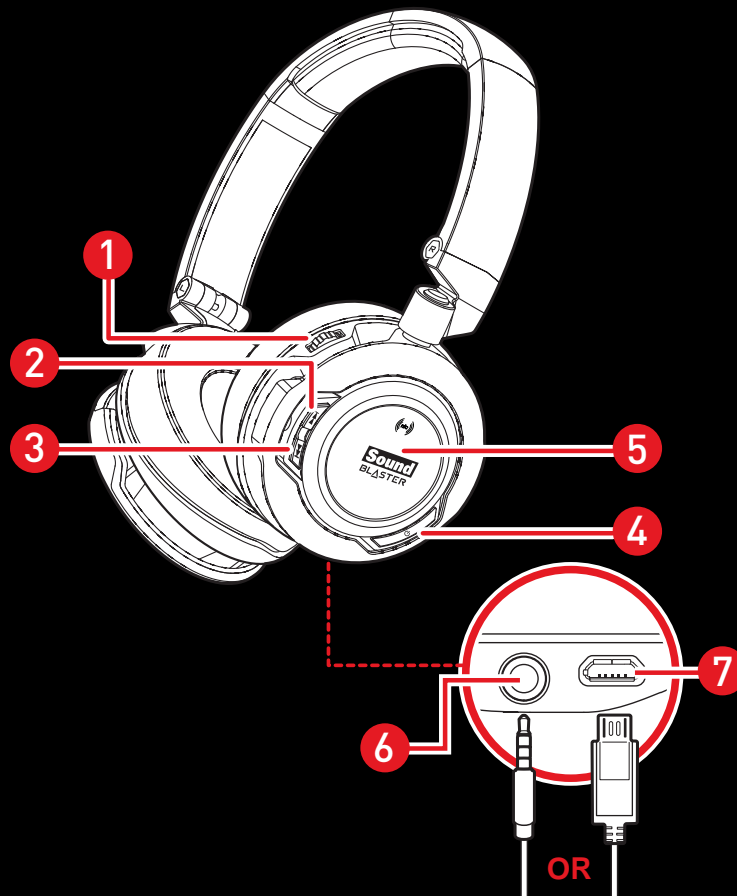
To learn more about the Creative Software AutoUpdate, please visit www.soundblaster.com/support.

Notes:

First-time users of Creative Software AutoUpdate may be prompted to authorize the download of a browser component required for system analysis. Check to ensure that this content is signed by Creative Labs, Inc., then click the **Yes** button.

Please ensure that all your Creative products are connected and installed on the same computer running Creative Software AutoUpdate.

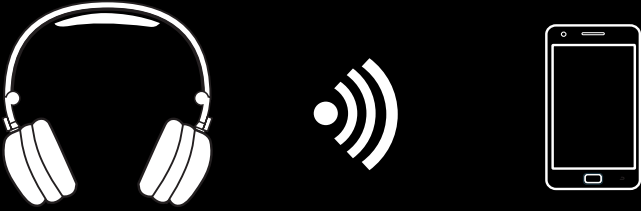
Overview



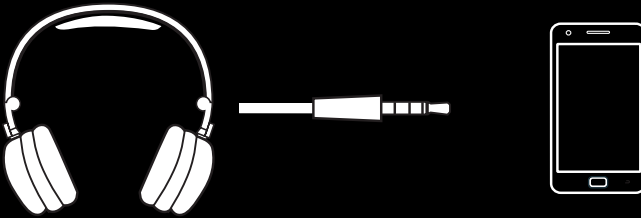
- 1 - Volume Control
- 2 - Next Track / Forward Button
- 3 - Previous Track / Rewind Button
- 4 - Power ON / OFF Button
- 5 - Multifunction Button / NFC zone
- 6 - 4-pole Analog Jack
- 7 - MicroUSB Port

Flexible Connection Options

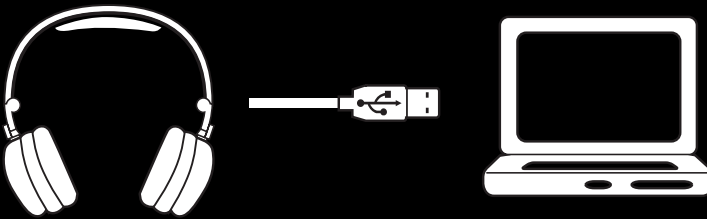
Connect to your Smart Devices via *Bluetooth*



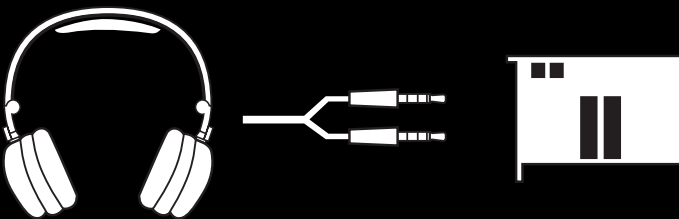
4-pole Analog Cable to your Smart Devices



USB Cable to your PC/Mac



Splitter Cable* to your Soundcard



* Cable not included

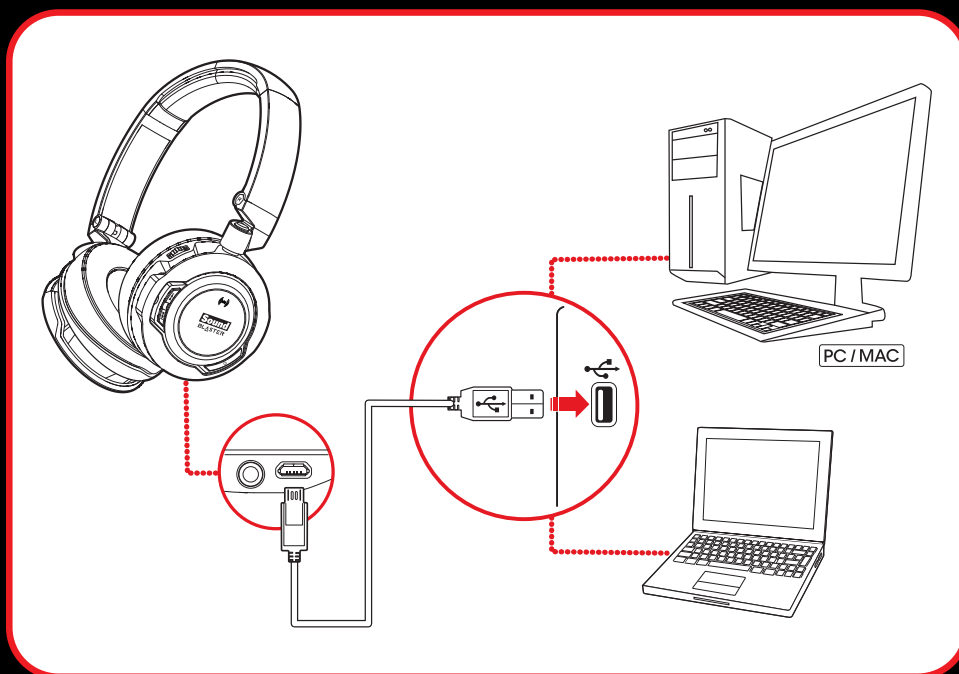
Using Your Sound Blaster EVO Wireless

Set up your headset in four simple steps:

1. Charge Your Headset
2. Install the Software
3. Pair the headset with your NFC / BT devices **OR**
4. Connect the headset to your computer / mobile device

Step 1 : Charge Your Headset

You are recommended to charge your headset for 8 hours before it is used for the first time. Connect your headset to your computer using the MicroUSB-to-USB cable, or connect it to a power supply via an adapter (available separately). The LED flashes red when charging.



Using Your Headset While Charging

During subsequent charges, you can use your headset while it charges. The LED will light in red while charging and return to its last status when fully charged.

You can also check the status of the battery via the battery indicator at the top right corner of the Sound Blaster EVO Control Panel. Please refer to **Using the Software** for details on this software.

Note:

The low battery tone will start beeping to inform users of its status 15 minutes before the headset is completely powered off.

Step 2 : Install the Software

Your headset is now ready for use. However, you can enhance your audio and voice experience via an optional software package that can be downloaded and installed into your PC. We recommend that you download and install this software to make full use of all the features that your headset is equipped with.

Note:

Please ensure that your headset is turned on and plugged into your computer before downloading and installing the software.

For Windows

1. Using a standard web browser, visit www.soundblaster.com/downloads/EVOWireless/ and locate the software package for the Windows operating system for your product.
2. Download this package into your local hard disk.
3. Locate and launch the software package.
4. Follow the on-screen instructions to complete the installation.
5. When prompted, restart your computer.
6. Launch the application by clicking **Start > Programs or All Programs > Creative > Sound Blaster EVO > Sound Blaster EVO Control Panel**.

For Mac

1. Using your web browser, visit www.soundblaster.com/downloads/EVOWireless/ and locate the software package for the Mac OS for your product.
2. Download this package into your local hard disk.
3. Double-click the downloaded file to decompress it.
4. Double-click the uncompressed DMG file.
5. Double-click the **Install** icon and follow the subsequent on-screen instructions to complete the installation.
6. Launch the **Sound Blaster EVO Control Panel** from the **Applications > Creative > Sound Blaster EVO** folder.

For more details on the software and the various features it has to offer, please refer to **Using the Software**.

Step 3 : Pair the headset with your NFC / BT devices

NFC Pairing

Bring your NFC-enabled device close (20mm) to the NFC zone / **Multifunction** button. The LED will light in blue for 3 seconds and a 3-note tone will be heard to indicate successful pairing. Play music from your device directly.

If you wish to unpair the devices, simply tap your NFC device on the headset again.



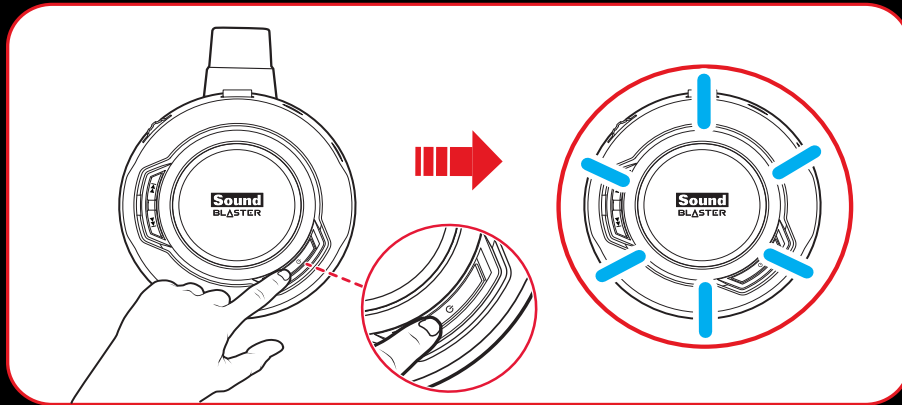
Note:

The headset is ready to use when the device displays "Sound Blaster EVO Wireless is connected".

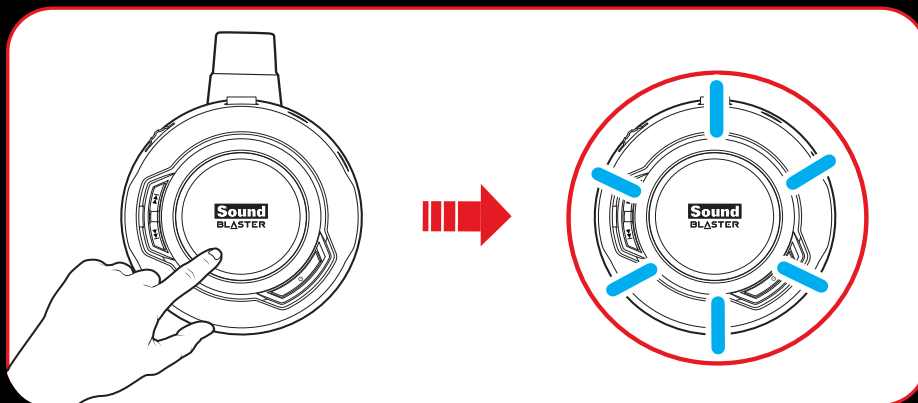
Manual Pairing

Step i : Activate pairing mode on the headset

Turn on your headset. If the headset has not been paired with any devices previously, it will go into *Bluetooth* discoverable mode. Otherwise, it will be automatically paired to previously paired devices.

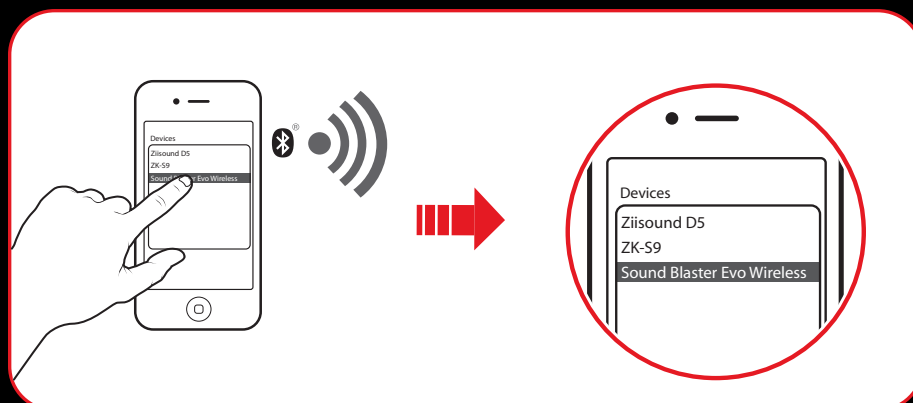


The *Bluetooth* discoverable mode is only available for 60 seconds after the headset is turned on. To activate *Bluetooth* again, press the **Multifunction** button for 5 seconds. The LED will begin to flash slowly in blue for 60 seconds while waiting to be connected.



Step ii : Activate pairing mode on your device

Activate *Bluetooth* on your smart device. From the list of discovered *Bluetooth* devices, select "SB EVO Wireless".

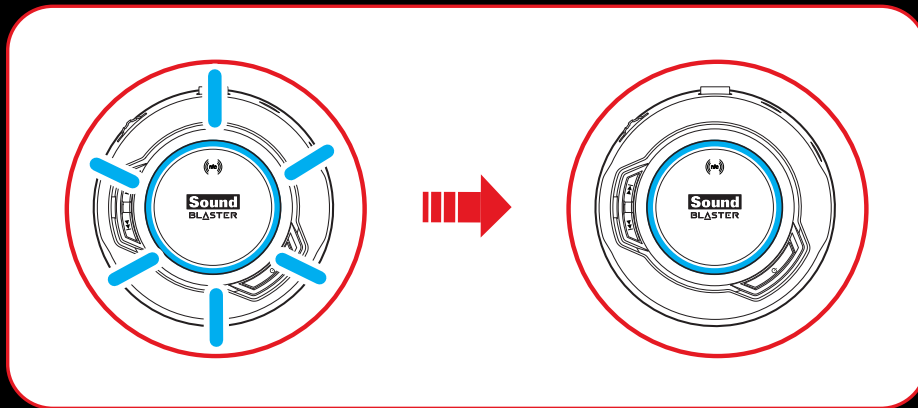


Note:

Bluetooth pairing between these devices may vary depending upon the model type. Consult your device's manual on how to pair.

Step iii : Pairing success

When the headset and the *Bluetooth* device are paired, the LED will light in blue for 3 seconds and a 3-note tone will be heard to indicate successful pairing before returning to its default / last status.



Pairing Multiple Devices

The EVO Wireless is able to pair up to two smart devices at the same time! To have the second device paired, repeat steps i to iii on **Manual Pairing**.

In the event a user wishes to pair the headset with a third smart device, one of the two devices that are currently paired with the headset has to be unpaired.

Note:

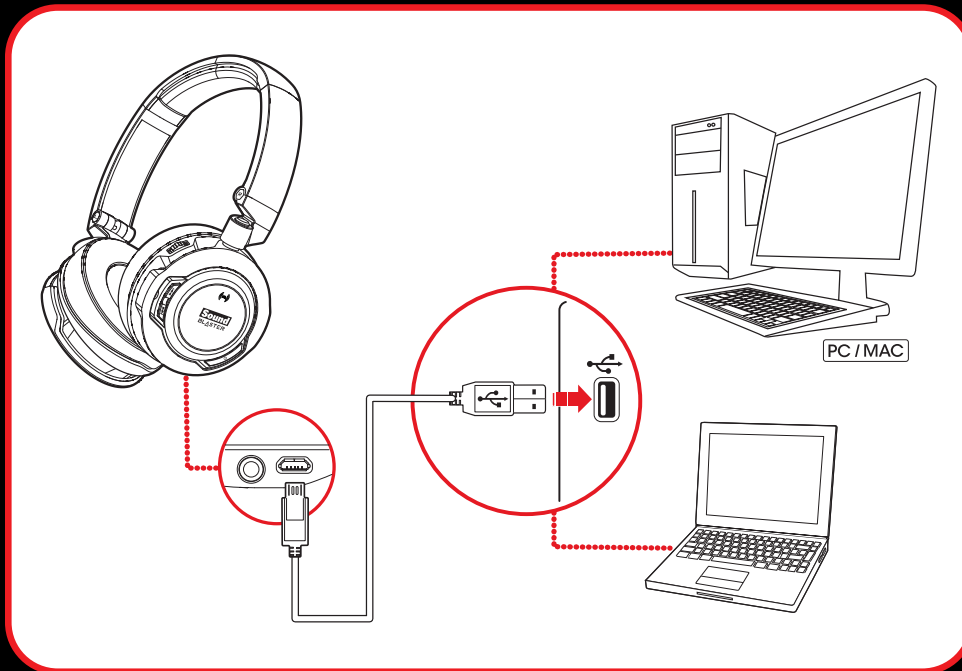
Only one of the devices is able to play music at one time. The last paired smart device takes precedence over the other device.

When there's an incoming call, the call takes precedence over audio playback -- music fades out and the ringtone will be heard.

Step 4 : Connect the headset to your computer / mobile device

Connecting to a Computer (USB Digital Mode)

Connect your headset to a computer using the MicroUSB-to-USB cable. Turn it on by pressing the **Power ON/OFF** button. The LED will light in red once the headset is properly connected. Experience the power of Sound Blaster with all your games and calls, on your PC and Mac.



Note:

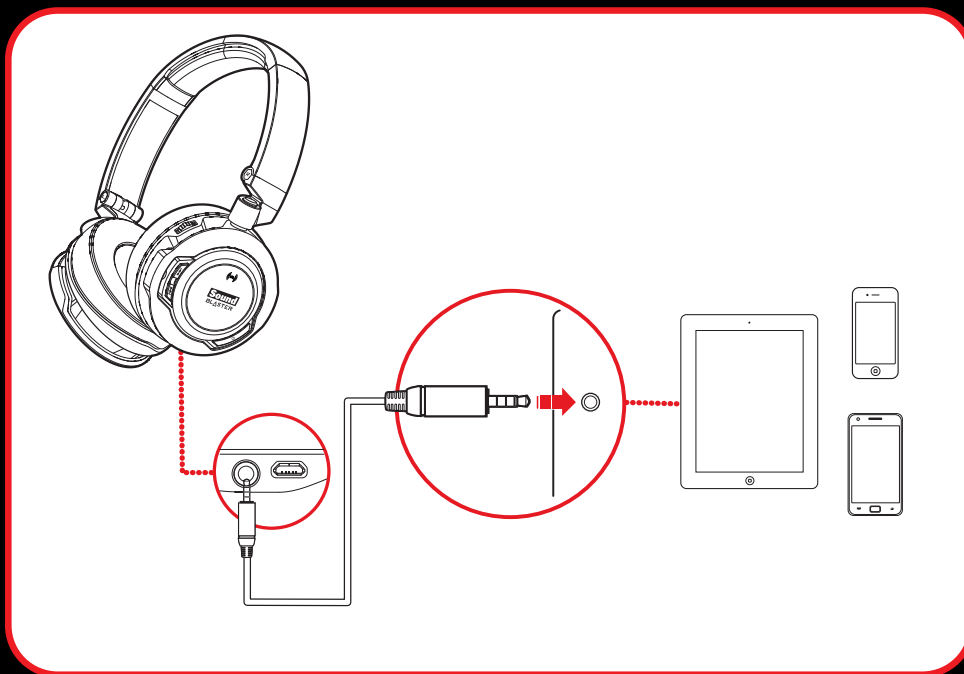
Profile setting adjustments via Sound Blaster Evo Control Panel is only available in USB Digital Mode. Refer to **Using the Software** for more information.

Set the default audio device (Mac OS ONLY)

1. Go to **System Preferences** and click **Sound**.
2. Select **Sound Blaster EVO Wireless** in both the **Output** and **Input** tabs.

Connecting to a Mobile Device (4-Pole Analog Mode)

If your headset runs out of power, simply connect it to a mobile device via the 4-pole analog cable. Enjoy the power of the Sound Blaster EVO Wireless entertainment headset on-the-go with portable smart devices including iPhones, Android phones and tablets.



Note:

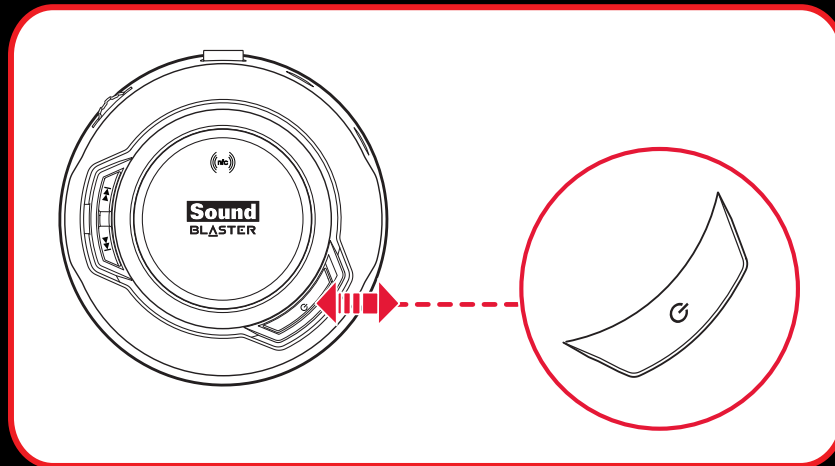
Only the microphone and the **Multifunction** button function in 4-Pole Analog Mode.

The headset works without consuming battery in this mode!

Use It

Turn On the Headset

Press the **Power ON/OFF** button on the headset for 2 seconds to turn it on. Similarly, when it's turned on, press the **Power ON/OFF** button for 2 seconds again if you wish to turn it off.



If your headset is paired successfully with a *Bluetooth*-enabled device previously, it will automatically search for the device when it's turned on. This gives you the convenience and freedom to move around a distance of 33 feet (10 meters) away from your *Bluetooth* device. The LED will flash slowly in blue while waiting to be connected.

No manual pairing is required by default. If you need to manually pair the headset such as when you use a new *Bluetooth* device or in the event of a connection error, refer to **Manual Pairing** for instructions.

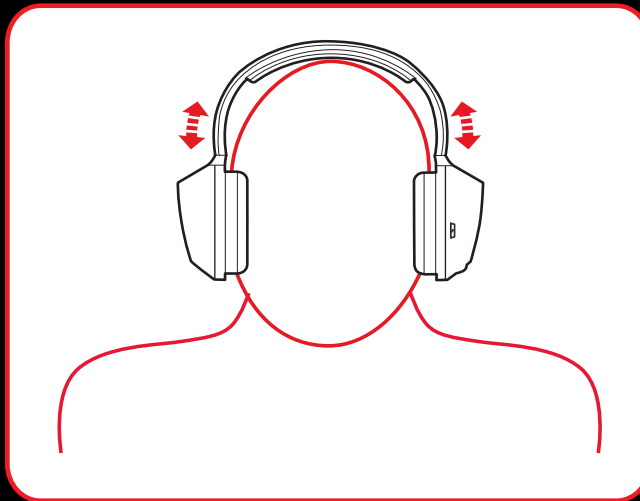
Note:

If no pairing is done within 60 seconds, *Bluetooth* pairing mode will be deactivated.

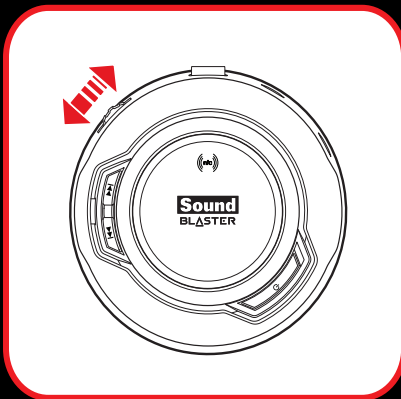
The headset will automatically be powered off to conserve battery power if it has no activity for 15 minutes.

Wearing the Headset

Adjust the headband so that the headset rests lightly on your head. Do not tighten excessively.



Adjusting the Volume



The Volume Control on the headset cup can be used to adjust your headset volume to a comfortable level. You can also adjust the volume via the software or the built-in volume settings on your computer.

CAUTION:

Do not listen to audio on your headset at high volumes for prolonged periods of time to avoid impairing your hearing.

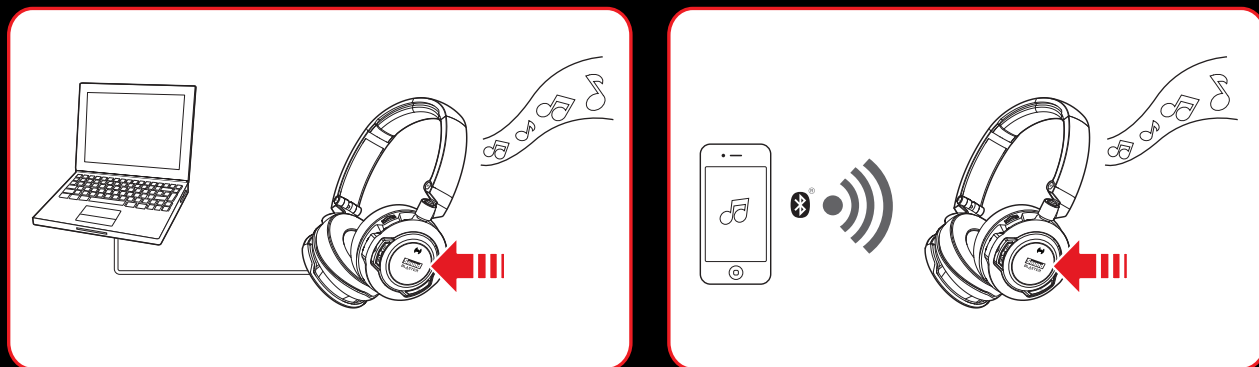
Reset Headset to Factory Default Settings

Turn off your headset. Press and hold the **Multifunction** button followed by **Power ON/OFF** button for 1 second to reset *Bluetooth* pairings and volume level to their initial settings. A 3-note tone will be heard to indicate that the settings are all reset. The headset then returns to power on mode and ready for new *Bluetooth* pairings.

Usage Scenarios

Playing Music or Movies

Connect your Sound Blaster EVO Wireless to your computer via USB to enjoy the legendary Sound Blaster audio quality. Alternatively, you may now connect it wirelessly to a portable entertainment device such as mobile phones and tablets and enjoy clear audio quality on the go!



The SBX Dialog Plus feature brings out the dialog in movies for maximum clarity, while the SBX Bass fills extends the low frequency tones and gives the extra impact for a dramatically improved sound experience. The SBX Surround enhances your movie or music playback by producing virtual speakers around, above and below you, creating an immersive audio experience.

1. Play or Pause Music

Tap on the **Multifunction** button once to play music and again to pause it. Similarly, tap on the same button to resume.

2. Fast Forward or Next Track

Press on the **Next Track / Forward** button once to skip a track. Continue pressing the button to skip a few tracks forward.

Press and hold the **Next Track / Forward** button to fast forward a track.

3. Rewind or Previous Track

Press on the **Previous Track / Rewind** button once to go to the previous track. Continue pressing the button to skip a few tracks backwards.

Press and hold the **Previous Track / Rewind** button to rewind a track.

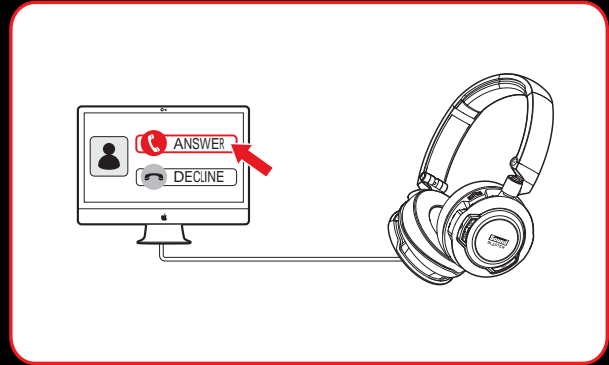
4. Adjusting Volume

Adjust the volume control to increase or decrease the music level.

Note: Not applicable in 4-Pole Analog Mode.

Answering and Ending Calls

When the headset is turned on, it goes into standby mode and waits for calls passively. After you have ended a call on your mobile phone, the headset returns to standby mode or resumes your music again.



The dual mic technology will be automatically enabled. The Voice Focus feature is able to pick up your voice clearly while the Noise Reduction effect eliminates unwanted background noise from both ends of a call. You may choose to morph your voice with special effects with the Voice FX too!

1. Answer or End a Call

When there's an incoming call from your mobile device while you are listening to music, the music fades out and the ringtone will gradually be heard.

Tap on the **Multifunction** button once to answer the call, and tap on the same button again to end it. The music will resume after the call has ended.

If the headset is connected to a computer, click on the answer call button prompted on the computer screen to enter voice communication.

2. Redial Last Number

Press the **Multifunction** button twice to redial the last called number.

Note: This feature may vary depending on your phone and is not available in USB Digital Mode.

3. Activate Voice Command

To activate voice command (e.g. Siri), press and hold the **Multifunction** button for 3 seconds to initiate the function.

Note: This feature may vary depending on your phone and is not available in USB Digital Mode.

4. Adjusting Volume

When listening to music, you may adjust the volume control to increase or decrease the music level.

Note: Not applicable in 4-Pole Analog Mode.

Using the Software

A specialized software for the Sound Blaster EVO Wireless is developed to provide additional enhancements to the audio and voice inputs and outputs of the product. The software bundle supports a range of operating systems including:

- Windows 8, Windows 7, Windows Vista
- Mac OS X 10.5.8 or higher

To take full advantage of your headset, we recommend downloading and installing this software into your computer. The following applications are included in the software bundle:

For **Windows OS**,

- Sound Blaster EVO Control Panel
- Creative Software AutoUpdate
- Product Registration
- Creative System Information
- Creative ALchemy
- Host OpenAL
- Creative Driver

For **Mac OS**,

- Sound Blaster EVO Control Panel
- Product Registration
- Creative Uninstaller
- Creative Driver

Note:

Some applications are available only for certain operating systems. To learn more about each application, please consult its respective Online Help.

Launch the **Sound Blaster EVO Control Panel**.



This software includes a number of configurations that help you control the basic functions of your product plus several software enhancement configurations that can be made to heighten your product's performance. Click each of the menu bars to expand the configurations available.

Using the Sound Blaster EVO Control Panel

The rest of this chapter explains how to use the Sound Blaster EVO Control Panel to view and adjust the various features of your Sound Blaster EVO Wireless. The examples and screenshots below uses Windows as an example. The user interface for other operating systems may differ slightly.

Managing Your Profiles

The Sound Blaster EVO Control Panel comes equipped with a set of pre-configured profiles to suit your different needs including:

- Music
- Movies
- Gaming



To activate a profile,

1. Click the **SBX Profile** menu to view the **SBX Profile** screen.
2. Select your desired profile from the screen.


To modify and save changes to the active profile,


1. Click the **Edit** button to modify the profile you have selected.
2. Navigate through the various other menu options of the Sound Blaster EVO Control Panel and modify the configurations as desired.

Configuring your general settings

You can change the language settings or restore settings to their default values.




Click  from the top right corner of the interface and select the option from the list.

The battery icon  indicates the battery status of the headset.

Enhancing the Audio - SBX Pro Studio

To configure SBX Pro Studio, go to the **SBX Profile** screen, select a profile and click **Edit** to enter the **SBX Pro Studio** screen. By default, the SBX effect is turned on. You may adjust the effects on this screen.



1. Click the checkbox next to one or more of the available enhancements to enable it.
2. Adjust the level of enhancements to be applied individually.
3. Click  to play the demo video to test your configurations.
4. Readjust if necessary.
5. Click **Save** to save the adjusted settings or **Reset** to restore default settings.

SBX Pro Studio includes a number of enhancements for movies and gaming, elevating your movie and gaming experience to the next level. These include:

- **SBX Surround** - provides immersion control to enhance the natural sense of audio depth and spaciousness by creating virtual surround sound channels. Stereo content or multi-channel content will sound as if its coming from all sides while voices remain centered in front and original balance and timbre is preserved.
- **SBX Crystalizer** - restores the natural dynamic range that is lost when music files (e.g. MP3) gets compressed. This makes the music sound as good as the artist originally intended, and adds an enhanced level of realism for movies and games.
- **SBX Bass** - fills in the missing low frequency tones and gives the extra impact for a better entertainment experience. Consumers no longer have to tolerate a lack of bass in speakers as the SBX Bass technology dramatically improves the sound experience even in the absence of a subwoofer.
- **SBX Smart Volume** - addresses the problem of abrupt volume level changes during playback and between songs by continuously measuring volume automatically, applying gain and attenuation intelligently to compensate for any changes.
- **SBX Dialog Plus** - enhances the voices in movies for clearer dialog, allowing the listener to hear the dialog over the rest of the soundtrack and over ambient noise in the listening environment.

Enhancing the Microphone - CrystalVoice™

To configure CrystalVoice settings, click the **CrystalVoice** menu option on the left.



1. Select a recording device and adjust its microphone volume using the volume slider.
2. Click the checkbox next to one or more of the available enhancements to enable it.
3. Click **Test** and speak into your microphone to listen to your voice with the selected presets applied. Readjust if necessary.

CrystalVoice enhancements helps you hear and be heard clearly by all participants of the conference, doing away with noisy background distortions and unclear communication that disrupts your online chatting and gaming experience. The various enhancements available include:

- **CrystalVoice FX™** - enables the alteration of voice with a variety of effects which can be used to enhance the tone of a voice, create interesting accents or even allow someone to sound like a completely different person.
- **CrystalVoice Noise Reduction** - enables the speaker to be heard clearly over background noise by constantly monitoring the environment and eliminating unwanted noise that interferes with the conversation.
- **CrystalVoice Focus** - creates a zone and suppresses noise outside it to enable the speaker within to be heard with amazing clarity. Multiple microphones are used to focus, enhance the speaker's voice, and eliminate sounds outside the zone.

Note:

The **CrystalVoice Focus** feature will be turned on automatically at all times.

Equalizer Settings

Equalizers allow you to filter various audio frequencies, thus controlling the tone of your audio output. The Sound Blaster EVO Control Panel comes equipped with a range of preset equalizer settings, helping you to select different audio tones easily. You can also manually modify or add equalizer presets.



To configure Equalizer settings, go to the **SBX Profile** screen and select a profile. Click **Edit** and then click **Equalizer**. To adjust and apply an equalizer preset,

1. Check the **EQ** checkbox to enable the use of the equalizer.
2. From the drop down menu, select the preset to use.
3. Adjust the vertical slider bars to achieve your desired level.
4. Click **Save** to save the changes to the active preset or to a new preset.

You can also delete any user created equalizer presets by selecting the preset from the drop down menu and clicking **Delete**.

Note:

All default equalizer presets cannot be deleted.

Headphones Settings

The Sound Blaster EVO Control Panel enables you to enjoy audio with 7.1 channel virtual surround sound from your EVO Wireless.



Note:

Click **Test** to listen to audio with the selected configuration.

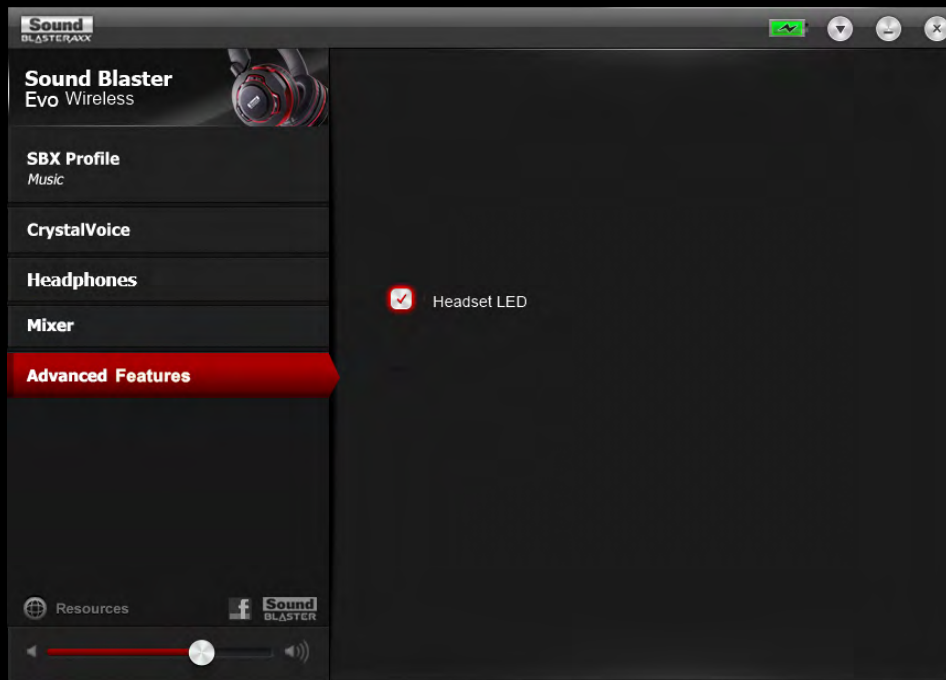
Mixer Settings

A mixer is also available via the software, allowing you to adjust the volume levels of individual outputs and channels including the microphone, headphones, etc. Simply click the **Mixer** option on the menu and adjust the volumes using the sliders.



Advanced Features

The Advanced Features screen allows you to turn the red LED on / off based on your preference.



Playing Games

Your headset is equipped with cutting edge audio technologies and software to enhance the audio in your games. SBX Pro Studio will elevate your gaming experience to the next level, allowing you to hear sound details in games you have never heard before! For more details on the various SBX Pro Studio effects and their setup, please refer to **Enhancing the Audio - SBX Pro Studio**. Using the Software

Restoring Audio Effects in Games with Creative ALchemy

When playing DirectSound[®] 3D on Windows 8, Windows 7 and Windows Vista, the game loses its immersiveness and environmental effects due to changes in audio architecture.

To restore these effects and experience the full audio immersion, follow the steps below:

Enable the game in Creative ALchemy

1. Click **Start > Programs or All Programs > Creative > ALchemy > Creative ALchemy**. The game should be detected automatically and appear in the left column.
2. Select the game and click **>>** to move it to the right column.
3. Close the application.

When you launch the game, you should hear the original effects.

Note:

If the game is not detected, do the following:


- Navigate to the folder where you have installed the game.
- Right-click the game's launched and select **Run as administrator**.
- Exit the application and launch Creative ALchemy again. The game should now appear in the left column.

General Specifications

Connectivity

- 3.50mm (1/8") 4-pole jack for connection to mobile devices
- Micro USB port for charging and connection to computers
- *Bluetooth*
- NFC

Technical Specifications

- *Bluetooth* Version: *Bluetooth* 2.1 + EDR (Enhanced Data Rate)
- *Bluetooth* Operating Frequency: 2402 - 2480 MHz
- *Bluetooth* Operating Range: Up to 10 meters / 33 feet
(Measured in open space. Walls and structures may affect range of device.)
- Supported *Bluetooth* Profiles:
 - A2DP (*Wireless Stereo Bluetooth*)
 - AVRCP (*Bluetooth* Remote Control)
 - HSP (Headset Profile)
 - HFP (Handsfree Profile)
- Supported Audio Codec: AAC, SBC, aptX
- Operating Temperature Range: 0°C to 45°C
- Number of RF channels: 79
- RF transmitter power output: 0dBm (typical)
- Lithium Ion Battery: 3.7 V 1500 mAh (5.55 Wh)
- USB Input: 5 V  500 mA

SBX Pro Studio Technology

- SBX Surround
- SBX Crystalizer
- SBX Bass
- SBX Smart Volume
- SBX Dialog Plus

CrystalVoice Technology

- CrystalVoice FX
- CrystalVoice Noise Reduction
- CrystalVoice Focus

Troubleshooting

What do the various LED statuses mean?

The Sound Blaster EVO Wireless headset is equipped with LEDs that indicate the statuses of the device. Each LED, their possible statuses and corresponding explanations are listed in the tables below:

Action	LED	Status
Power On / Off	Solid red (with power up tone)	Headset is powered on
	Off (with power down tone)	Headset is off
Battery Charging (headset status is OFF)	Flashing slowly in red	Headset battery is charging
	Off	Battery charging is complete
Battery Charging (headset status is ON)	Solid red	Headset battery is charging
	LED returns to the last status	Battery charging is complete
Headset Pairing	Flashing slowly in blue (60 seconds)	Headset is searching for <i>Bluetooth</i> -enabled devices
	Solid blue (3 seconds) and returns to the last status	Headset is paired successfully
Unpair Headset	Flashing slowly in blue	Headset is unpaired

The onboard audio chipset seems to be in conflict with Sound Blaster EVO Wireless.

Ensure that the Sound Blaster EVO Wireless headset is properly inserted into the USB port.

No sound from the headset.

Check the following:

- The headset and your *Bluetooth* device are turned on.
- The headset has sufficient battery power.
- The volume settings in Sound Blaster EVO Control Panel and system audio are properly adjusted and not muted.
- There is no hardware conflict between the headset and a peripheral device.
- The headset is selected as the default audio device. Ensure that existing analog headset is disconnected.

There is clipping/distortion during audio playback.

Check the following:

- Your computer system should be running in high performance mode. You may need to disable any power saving features.
- The music source may be distorted. Ensure that the music played has no distortion.
- Ensure that the software graphical equalizer or sound processing effects found in third party media players are disabled.

Some features are disabled when playing certain games.

When playing games that use DirectSound3D or OpenAL sound engines, certain audio features will be disabled automatically. This is to avoid distorting the environmental audio cues present in the game. These features will be re-enabled automatically when you exit the game.

Electronic interferences is occurring with other wireless devices.

Do the following:

- Set your wireless LAN router's channel to Auto, 1 or 11. To do this, refer to your router's user documentation.
- Place your *Bluetooth* device away from other devices (for example, wireless routers) that transmit wireless signals.
- Place your *Bluetooth* device away from large metal surfaces.
- Refrain from doing large file transfers via the wireless Internet or *Bluetooth* connection while listening to music wirelessly. Alternatively, do not use your headset during intensive file transfers.
- Disconnect existing *Bluetooth* device.

Music is not being transmitted to my headset.

Check the following:

- Your *Bluetooth* device and your headset are turned on.
- Your *Bluetooth* device and your headset are paired with each other.
- For Android phone, launch "*Bluetooth* setting" and click on the headset device's name. Under "Profile", make sure both "Call audio" and "Media audio" are checked.
- Ensure that the headset is set as the default *Bluetooth* output device on mobile phones or tablets.

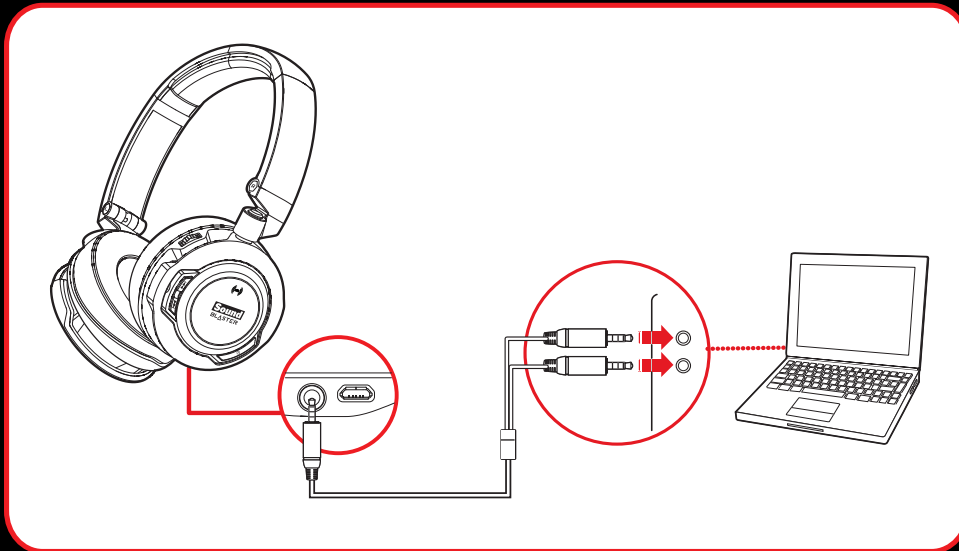
Problem with NFC pairing.

Do the following:

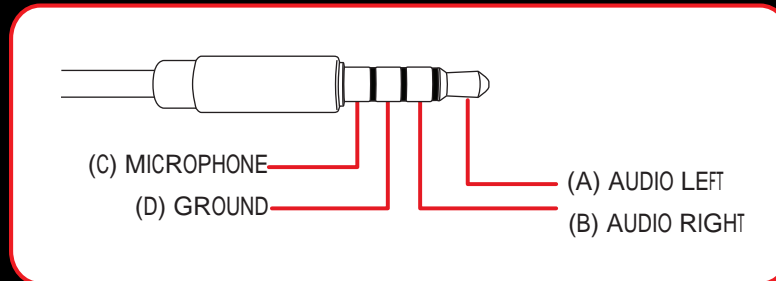
- Check if your mobile device is NFC-enabled.
- Ensure that the NFC feature on your mobile device is turned on.
- Ensure that the Android OS on your device is updated to the latest version. An older version of Android might not be able to pair with audio device.
- Check if there are already two devices being connected to the headset. In that case, select one of the devices to be powered off.

Additional Guide for Windows Users

In the event a user wishes to connect the headset via a 4-pole cable to a PC / notebook or a Sound Blaster sound card, it is recommended to purchase a Y-splitter separately (available online) for best audio. **Note:** Turn off the SBX effect on the headset if it's connected to the Sound Blaster sound card.



Generally a 4-pole stereo cable bundle allows you to connect your headset to your iPhone / Android phone / tablet. However, some phone / tablet's 4-pole female jack has different configuration and this cable is unable to support if the configuration is different from the jack (bundled) as illustrated below:



Should you be keen to connect your headset to an MP3 Player, you will need to check if the configuration of its 4-pole female jack is compatible.

Tips for iPhone Users

When your iPhone is paired with the EVO Wireless during a call, you have the option to switch the audio source to either the EVO Wireless or your phone, so you are able to speak on the desired device or headset. **Note:** By default, the selected device will be your iPhone.

- a. To change the audio source, tap the "audio source" icon on the screen.



- b. Then, tap on the desired device, e.g. "SB EVO Wireless".



Safety Information

Refer to the following information to use your product safely, and to reduce the chance of electric shock, short-circuiting, damage, fire, hearing impairment or other hazards. **Improper handling may void the warranty for your product. For more information, read the warranty available with your product.**

- Read these instructions.
- Keep these instructions.
- Heed all warnings.
- Follow all instructions.
- Do not use this apparatus near water.
- Clean only with dry cloth.
- Do not block any ventilation openings. Install the product in accordance with the instructions.
- Do not install near heat sources such as radiators, heat registers, stoves, or other apparatus (including amplifiers) that produce heat.
- Do not expose your product to temperatures outside the range of 0°C to 40°C (32°F to 104°F).
- Do not pierce, crush or set fire to your product.
- Keep your product away from strong magnetic objects.
- Do not subject your product to excessive force or impact.
- Protect the cables from being walked on or pinched, particularly at the plugs, convenience receptacles and the point where they exit from the apparatus.
- Only use attachments/accessories specified by the manufacturer.
- Use only with the cart, stand, tripod, bracket or table specified by the manufacturer or sold with the apparatus. When a cart is used, use caution when moving the cart/apparatus combination to avoid injury from tip-over.
- Unplug the apparatus during lightning storms or when unused for long periods of time.
- Do not dismantle or attempt to repair your product.
- **Refer all servicing to authorized and qualified service personnel.** Servicing is required when the apparatus has been damaged in any way, such as power-supply cord is damaged, liquid has been spilled or objects have fallen into the apparatus, the apparatus has been exposed to rain or moisture, does not operate normally, or has been dropped.
- **WARNING:** To reduce the risk of fire or electric shock, do not expose your product to water or moisture. If your product is moisture-resistant, take care not to immerse your product in water or expose it to rain.

Earphones

- When a conductive apparatus, such as earphones, is used in close proximity with a CRT television or CRT monitor, the latter may emit an electrostatic discharge. This electrostatic discharge can be felt as a static shock. While this static shock is usually harmless, it is good practice to avoid close contact with CRT devices when using earphones.
- Do not listen to audio on your earbuds or headphones at high volume for prolonged periods of time as hearing loss may result. For users in the United States, go to www.hei.org for more information.
- Do not listen to your audio device at high volume when driving, cycling or crossing the road, especially in heavy traffic or any other traffic condition where such use will hinder safe travel on the roads. We recommend that consumers be extremely cautious when using this device on the road.

Avoid Hearing Damage

Permanent hearing loss may occur if the Sound Blaster EVO Wireless headset is used at high volume. Set the volume to a safe level. You can adapt over time to a higher volume of sound that may sound normal but can be damaging to your hearing. If you experience ringing in your ears or muffled speech, stop listening and have your hearing checked. The louder the volume, the less time is required before your hearing could be affected. Hearing experts suggest that to protect your hearing:

- Limit the amount of time you use the Sound Blaster EVO Wireless headset at high volume.
- Avoid turning up the volume to block out noisy surroundings.
- Turn the volume down if you can't hear people speaking near you.

To prevent possible hearing damage, do not listen at high volume levels for long periods.



Embedded Battery

- Do not attempt to remove the embedded battery. The product must be disposed of according to local environmental regulations. To replace the battery, return your product to your regional support office. For product service information, go to www.creative.com.
- Do not expose to excessive heat such as sunlight, fire or the like.
- **CAUTION:** Risk of explosion if battery is replaced by incorrect types.

CAUTION
RISK OF EXPLOSION IF BATTERY IS REPLACED
BY AN INCORRECT TYPE.
DISPOSE OF USED BATTERIES ACCORDING
TO THE INSTRUCTIONS.

Wireless Device

- The short wave radio frequency signals of a wireless device may impair the operation of other electronic and medical devices.
- Switch off the device where it is prohibited. Do not use the device in medical facilities, aircraft, refueling points, close to automatic doors, automatic fire alarms or other automatically controlled devices.
- Keep this device at least 20cm from pacemakers and other medical devices. Radio waves may impair the operation of pacemakers and other medical devices.

IMPORTANT — A LIRE AVEC ATTENTION

Ecouter de manière prolongée, à un très haut volume sonore de la musique (au dessus de 80 décibels), au moyen d'un casque ou d'écouteurs, peut entraîner une détérioration irréversible et définitive de vos facultés auditives. L'usage répété et habituel d'un casque ou d'écouteurs à un niveau de volume sonore trop élevé peut donner l'impression à l'utilisateur que le volume sonore émis par l'appareil n'est pas suffisant. L'utilisateur sera tenté d'augmenter, petit à petit, son réglage habituel, risquant ainsi d'atteindre un niveau dangereux pour ses oreilles. Afin de protéger votre santé, et vos oreilles, veillez à maintenir le volume de la sortie casque de votre appareil à un niveau adapté et à interrompre son utilisation régulièrement et particulièrement si des symptômes, comme des troubles de l'ouïe, se manifestent.

N'utilisez pas le casque ou les écouteurs pendant la conduite d'une voiture, d'une bicyclette ou de tout autre véhicule motorisé, afin d'éviter tout accident de circulation. En outre, il est interdit dans certains pays d'utiliser un casque ou des écouteurs en conduisant. Il peut être également dangereux d'écouter à volume élevé tout en marchant, spécialement aux passages piétons. Soyez toujours extrêmement prudent et cessez d'utiliser cet appareil dans les situations présentant des risques d'accident.

Evitez d'utiliser le casque ou les écouteurs à volume élevé. Les médecins spécialistes de l'audition déconseillent une écoute continue à volume trop élevé. Si vous percevez un sifflement dans les oreilles, réduisez le volume ou cessez l'écoute.

Maintenez un volume d'écoute modéré. Vous pourrez ainsi entendre les sons extérieurs et être attentif aux gens qui vous entourent.

Votre produit Creative accompagné des écouteurs fournis, est conforme à la réglementation française concernant les baladeurs musicaux (Arrêté du 24 Juillet 1998). Les caractéristiques techniques de ces écouteurs se trouvent dans le manuel en ligne et/ou sur le site internet de Creative. Si vous choisissez d'utiliser un autre casque ou d'autres écouteurs, veuillez vous assurer au préalable que leurs caractéristiques techniques soient les mêmes.

срок эксплуатационной долговечности

В соответствии с законодательством Российской Федерации компания Creative устанавливает для данного товара срок службы 2 года. Указанный срок – это период времени, в течение которого компания Creative гарантирует возможность использования продукции в соответствии с ее назначением. Кроме того, во время этого срока компания Creative гарантирует:

(i) безопасность товара, (ii) возможность выполнения его ремонта и получения технической поддержки, (iii) поставку запасных частей. Однако установление срока службы не означает автоматического бесплатного предоставления технической поддержки и обслуживания. Эти виды услуг предоставляются бесплатно только в течение гарантийного периода в соответствии с гарантийными обязательствами.

Regulatory Information

Notice for the USA

FCC Part 15: This equipment has been tested and found to comply with the limits for a Class B digital device, pursuant to Part 15 of the FCC Rules. These limits are designed to provide reasonable protection against harmful interference in a residential installation. This equipment generates, uses and can radiate radio frequency energy and, if not installed and used in accordance with instructions, may cause harmful interference to radio communications. However, there is no guarantee that interference will not occur in a particular installation. If this equipment does cause harmful interference to radio or television reception, which can be determined by turning the equipment off and on, the user is encouraged to try to correct the interference by one or more of the following measures:

- Reorient or relocate the receiving antenna.
- Increase the separation between the equipment and receiver.
- Connect the equipment to an outlet on a circuit different from that to which the receiver is connected.
- Consult the dealer or an experienced radio/TV technician for help.

This device complies with part 15 of the FCC Rules. Operation is subjected to the following two conditions:

1. This device may not cause harmful interference, and
2. This device must accept any interference received, including interference that may cause undesired operation.

CAUTION: To comply with the limits of the Class B digital device, pursuant to Part 15 of the FCC Rules, this device must be installed with computer equipment certified to comply with Class B limits.

All cables used to connect to the computer and peripherals must be shielded and grounded. Operation with non-certified computers or non-shielded cables may result in interference to radio or television reception.

MODIFICATION: Any changes or modifications not expressly approved by the grantee of this device could void the user's authority to operate the device.

Federal Communication Commission (FCC) Radiation Exposure Statement

Power is so low that no RF exposure calculation is needed.

Notice for Canada

This Class B digital apparatus complies with Canadian ICES-003 and RSS-210.

Cet appareil numérique de la classe B est conforme aux normes canadiennes NMB-003 et CNR-210.

This device complies with Industry Canada licence-exempt RSS standard.

Operation is subjected to the following two conditions:

1. This device may not cause harmful interference, and
2. This device must accept any interference received, including interference that may cause undesired operation.

Cet appareil est conforme avec Industrie Canada RSS standard exempts de licence.

Son fonctionnement est soumis aux deux conditions suivantes :

1. Le matériel ne peut être source D'interférences et
2. Doit accepter toutes les interférences reçues, Y compris celles pouvant provoquer un fonctionnement indésirable.

CANADIAN CLASS B STATEMENT: This digital device does not exceed the Class B limits for radio noise emissions from digital apparatus as set out in the interference-causing equipment statement entitled "Digital Apparatus", ICES-003 of the Department of Communications.

Cet appareil numérique respecte les limites de bruits radioélectriques applicables aux appareils numériques de Class B prescrites dans la norme sur le matériel brouilleur. "Appareils Numériques," NMB-003 édictée par le ministre des Communications.

MODIFICATION: Any changes or modifications not expressly approved by the grantee of this device could void the user's authority to operate the device.

Toute modification non approuvée explicitement par le fournisseur de licence de l'appareil peut entraîner l'annulation du droit de l'utilisateur à utiliser l'appareil.

European Compliance

This product conforms to the following:



EMC Directive 2004/108/EC.

RoHS Directive 2011/65/EU.

Mains operated products for the European market comply with Low Voltage Directive 2006/95/EC and Commission Regulation(s) Implementing Directive (2009/125/EC).

Communication/RF wireless products for the European market comply with R&TTE Directive 1999/5/EC.

CAUTION: To comply with the Europe CE requirement, this device must be installed with CE certified computer equipment which meet with Class B limits.

All cables used to connect this device must be shielded, grounded and no longer than 3m in length. Operation with non-certified computers or incorrect cables may result in interference to other devices or undesired effects to the product.

MODIFICATION: Any changes or modifications not expressly approved by Creative Technology Limited or one of its affiliated companies could void the user's warranty and guarantee rights.

WEEE DIRECTIVE 2002/96/EC



The use of the WEEE Symbol indicates that this product may not be treated as household waste. By ensuring this product is disposed of correctly, you will help protect the environment. For more detailed information about the recycling of this product, please contact your local authority, your household waste disposal service provider or the shop where you purchase the product.

BATTERIES DIRECTIVE 2006/66/EC



This product contains a Lithium ion/polymer battery that should only be removed by an authorized recycling centre. By recycling this product at your local authorized recycling centre or place of purchase, the battery will be removed and recycled separately.

Ukraine RoHS Statement

Обладнання відповідає вимогам Технічного регламенту щодо обмеження використання деяких небезпечних речовин в електричному та електронному обладнанні, затвердженого постановою Кабінету Міністрів України від 3 грудня 2008 № 1057

Notice for Australia / New Zealand



Complies with the requirements of the ACMA Radiocommunications (Electromagnetic Compatibility) Standard 2008.

Notice for Korea

B급 기 기

(가정용 방송 통신 기 자 재)

이 기 기 는 가정용 (B급) 전 자 파 적 합 기 기 로 서 주 로 가정 에 서 사 용 하 는 것 을 목 적 으 로 하 며 , 모 든 지 역 에 서 사 용 할 수 있 습 니 다 .

Turkey RoHS Statement

EEE Yönetmeliğine Uygundur

Notice for Singapore

Complies with
IDA Standard
DB00148

Notice for Japan

Recycling Rechargeable Battery



Lithium rechargeable battery is a resource that can be recycled.

- For recycling of embedded lithium rechargeable batteries inside Creative products, please do not attempt to remove the battery from the device. For recycling information and instruction, please go to Creative Media KK customer support at <http://jp.creative.com/support/contact/>
- For recycling of replaceable (removable_ lithium rechargeable batteries:



- It is recommended to remove the rechargeable batteries when they are fully discharged.
- Precaution needs to be taken on metal parts of the battery by covering them with isolation materials such as scotch tape.
- Refer to the homepage of JBRC for information on recycling and recovery of rechargeable batteries and supporting shops. (<http://www.jbrc.com/>).

Vietnam RoHS Statement

This product is in compliance with Circular 30/2011/TTBCT of the Ministry of Trade of the Socialist Republic of Vietnam ("Circular"), it does not contain the following substances in concentration greater than the Maximum Limit value as specified in the Circular.

Substance	Maximum Limit (ppm) ^{1, 2}
• lead	1000
• mercury	1000
• cadmium	100
• hexavalent chromium	1000
• polybrominated biphenyls (PBB)	1000
• polybrominated diphenyl ethers (PBDE)	1000

¹ Maximum Limit does not apply to applications exempted from the Circular.

² Maximum Limit refers to concentration by weight in homogeneous materials.

License and Copyright

Information in this document is subject to change without notice and does not represent a commitment on the part of Creative Technology Ltd. No part of this manual may be reproduced or transmitted in any form or by any means, electronic or mechanical, including photocopying and recording, for any purpose without the written permission of Creative Technology Ltd.

© 2013 Creative Technology Ltd. All rights reserved. Creative, the Creative logo, CrystalVoice Focus, Sound Blaster, the Sound Blaster logo, EVO, Creative ALchemy, SBX Pro Studio and the SBX logo are trademarks or registered trademarks of Creative Technology Ltd. in the United States and/or other countries. The *Bluetooth*[®] word mark and logos are registered trademarks owned by Bluetooth SIG, Inc. and any use of such marks by Creative Technology Ltd is under license. apt-X is a registered trademark of APT Licensing Ltd. Android is a trademark of Google Inc. Windows and Windows Vista are registered trademarks of Microsoft Corporation. iPad, iPhone, iPod, and Mac OS are registered trademarks of Apple Inc. All other trademarks are properties of their respective owners. All specifications are subject to change without prior notice. Use of this product is subject to a limited hardware warranty. Actual contents may differ slightly from those pictured. The software available for this product may not be used separately from the hardware. Before using the software, you must agree to be bound by the terms and conditions of the end user license agreement.

Version 1.0

May 2013