

# CREATIVE Sound Blaster for iTunes® and Sound Blaster Wireless Receiver

## Federal Communication Commission Interference Statement

This equipment has been tested and found to comply with the limits for a Class B digital device, pursuant to Part 15 of the FCC Rules. These limits are designed to provide reasonable protection against harmful interference in a residential installation. This equipment generates, uses and can radiate radio frequency energy and, if not installed and used in accordance with the instructions, may cause harmful interference to radio communications. However, there is no guarantee that interference will not occur in a particular installation. If this equipment does cause harmful interference to radio or television reception, which can be determined by turning the equipment off and on, the user is encouraged to try to correct the interference by one of the following measures:

- Reorient or relocate the receiving antenna.
- Increase the separation between the equipment and receiver.
- Connect the equipment into an outlet on a circuit different from that to which the receiver is connected.

- Consult the dealer or an experienced radio/TV technician for help.  
This device complies with Part 15 of the FCC Rules. Operation is subject to the following two conditions: (1) This device may not cause harmful interference, and (2) this device must accept any interference received, including interference that may cause undesired operation.

FCC Caution: Any changes or modifications not expressly approved by the party responsible for compliance could void the user's authority to operate this equipment.

IEEE 802.11b or 802.11g operation of this product in the U.S.A. is firmware-limited to channels 1 through 11.

## IMPORTANT NOTE:

### FCC Radiation Exposure Statement:

This equipment complies with FCC radiation exposure limits set forth for an uncontrolled environment. End users must follow the specific operating instructions for satisfying RF exposure compliance. To maintain compliance with FCC RF exposure compliance requirements, please follow operation instruction as documented in this manual.

This transmitter must not be co-located or operating in conjunction with any other antenna or transmitter.

SAR compliance has been established in typical laptop computer(s) with USB slot, and product could be used in typical laptop computer with USB slot. Other application like handheld PC or similar device has not been verified and may not compliance with related RF exposure rule and such use shall be prohibited.

CREATIVE

**WARNING:** Handling this product may expose you to chemicals known to the State of California to cause cancer and birth defects or other reproductive harm. **Wash hands after handling.**

### Explanatory Note

California Safe Drinking Water and Toxic Enforcement Act of 1986 (Proposition 65) requires special product labeling for products containing certain chemicals known to the State of California to cause cancer, birth defects or other reproductive harm. Creative has chosen to provide a warning based on its knowledge about the presence of one or more listed chemicals without attempting to evaluate the level of exposure. With Creative's products, the exposure may be below the Proposition 65 level of concern, or could even be zero. However, out of an abundance of caution, Creative has elected to place the Proposition 65 warning on its products.

Copyright © 2009 Creative Technology Ltd. All rights reserved. The Creative logo, Sound Blaster, X-Fi, CMS5, and Crystalizer are trademarks or registered trademarks of Creative Technology Ltd. in the United States and/or other countries. iPod and iTunes are registered trademarks of Apple Inc., registered in the U.S. and other countries.

PN 035B117000001 Rev.A

## Product Registration

Registering your product ensures you receive the most appropriate service and product support available. You can register your product at [www.creative.com/register](http://www.creative.com/register). Please note that your warranty rights are not dependent on registration.

## Technical & Customer Support Services

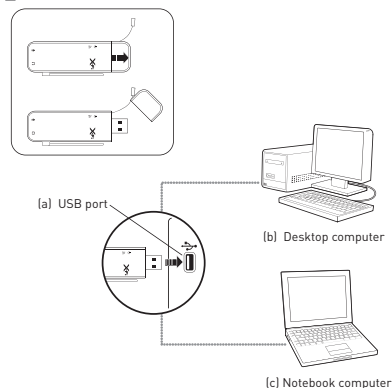
Go to [www.creative.com/support](http://www.creative.com/support) to resolve and troubleshoot technical queries at Creative's 24-hour self-help Knowledge Base. You can also find Customer Support Services and other helpful information here.

## Other Information

Warranty	Warranty information is supplied with your product. <b>Please keep your Proof of Purchase for the duration of the Warranty period.</b>
User's Guide	Download the user's guides at <a href="http://www.soundblaster.com/SBWirelessReceiver">www.soundblaster.com/SBWirelessReceiver</a> <a href="http://www.soundblaster.com/SBforiTunes">www.soundblaster.com/SBforiTunes</a>

Keep this document for future reference.

## 1 Setting Up Your Audio Device



## 2 Installing Software

Your transmitter is operational without any software installation. However, to enjoy all the features, install the drivers and applications provided on the installation CD.

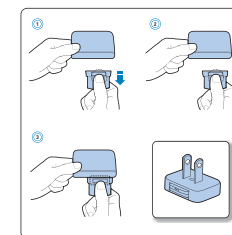
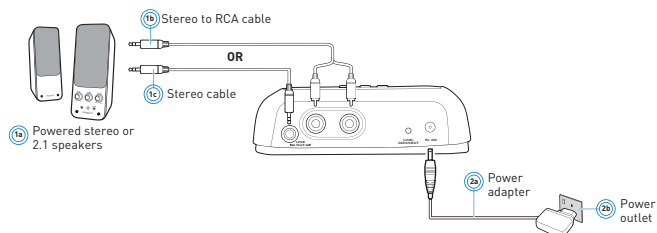
### For Windows Vista® and Windows® XP

1. If prompted for the audio drivers, click the **Cancel** button.
2. Insert the Installation CD into your CD or DVD drive. Your CD should start automatically. If it does not, follow the steps below:
  - i. Click **Start -> My Computer**.
  - ii. Right-click the CD or DVD drive icon, and then click **Open Autoplay** or **Autoplay**.
3. To complete the installation, follow the instructions on the screen.
4. When prompted, restart your computer.

### For Mac OS

1. Insert the Installation CD into your CD or DVD drive.
2. Double-click the <CREATIVE> icon.
3. Double-click the <Install> icon.
4. To complete the installation, follow the instructions on the screen.

## 3 Connecting Your Receiver



## 4 Pairing Your Audio Device (Transmitter) and Receiver

### 1 Turn on Transmitter and Receiver

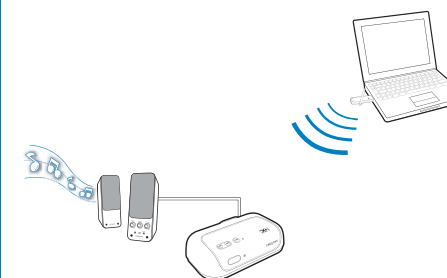


### 2 Auto pairing

The Link LED on the receiver flashes and then remains on when pairing is successful.



### 3 Play and stream music from Transmitter

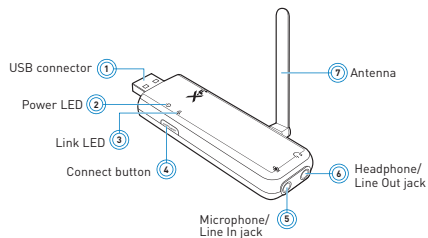


- NOTE**
- Place your receiver up to 30 meters (approximately 100 feet) away from your transmitter.
  - Place your transmitter or receivers away from large metal surfaces.
  - See the receiver's User's Guide:
    - to pair two or more receivers to your transmitter
    - if you are having difficulties pairing your transmitter and receiver

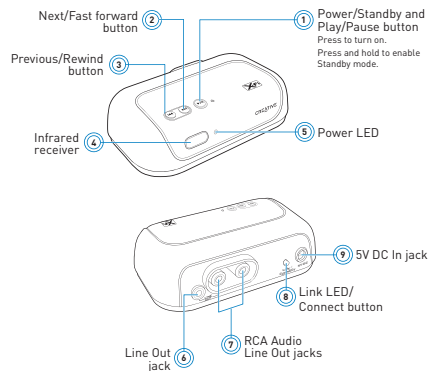


## About Your Devices

### Sound Blaster for iTunes

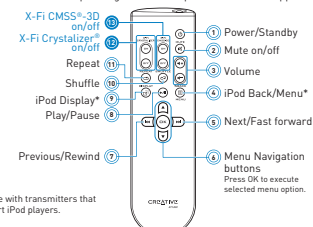


### Sound Blaster Wireless Receiver



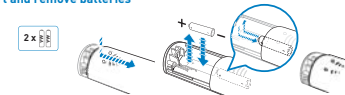
### Your Remote Control

Your remote control has an operating distance of up to three meters (approximately 9.8 feet).



\* For use with transmitters that support iPod players.

### Insert and remove batteries

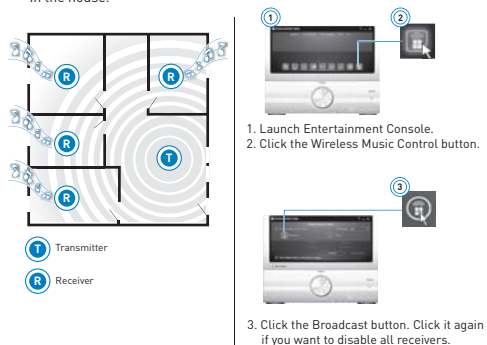


**NOTE** The cover of your remote control can only be opened halfway. Do not try to detach the cover when inserting the batteries.

## Using Wireless Features

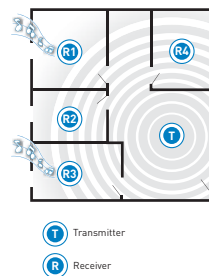
### Broadcasting

Broadcast music to every room in the house.

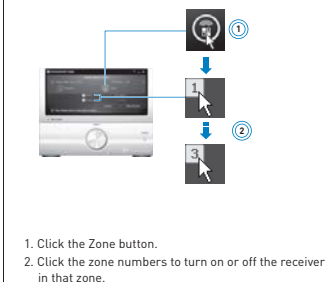


### Zone control

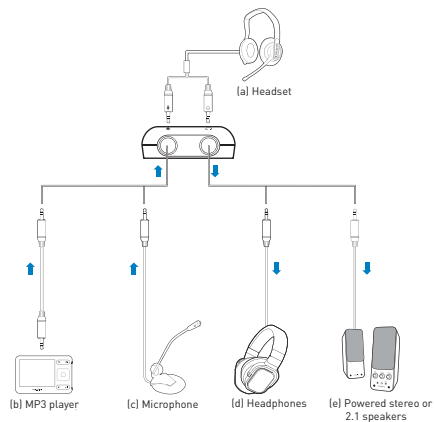
Control which rooms (up to four) receive music. This wireless feature requires manual pairing. More information is available in the User's Guide.



### Enable Zone control

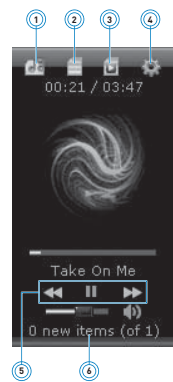


## Connecting Peripherals



## Sound Blaster Jukebox

Sound Blaster Jukebox\* is an easy-to-use, one-stop software that lets you control your wireless function and music playback.



- Music Library**  
Displays your music categories from iTunes or Windows Media Player.
- Track List**  
Displays tracks in the selected playlist or album.
- Playlists**  
Displays your playlists.
- Audio settings**  
Lets you access your wireless and X-Fi settings.
- Controls your music playback.
- News feed**  
Displays news and information from Creative.

**TIP** Right-click on the interface for more software options.

\* For PCs only

## Troubleshooting Tips

It is unlikely you will experience any problem if the audio devices are used in normal circumstances. Here are some wireless troubleshooting tips.

**My receiver seems to be picking up extra noise or there are intermittent pauses.**  
The placement of your receiver as well as the signals from other wireless routers or Bluetooth equipment may affect the quality of the transmission. Try the following:

- Place your transmitter or receiver away from other devices that transmit wireless signals. The receiver may also pick up noise from nearby power supply equipment.
- Reposition your transmitter or receiver so that there are fewer objects (for example, multiple walls or large metal structures) between them.
- Set your wireless LAN router's channel to Auto, 1 or 11. To do this, refer to your router's user documentation.
- Manually select an RF channel (in Entertainment Console) that is furthest away from that occupied by the co-existing devices.
- Refrain from doing large file transfers via the wireless internet or Bluetooth connection while you are streaming music. Alternatively, stop streaming music during intensive file transfers.

For more troubleshooting tips, please see the User's Guides of your devices.