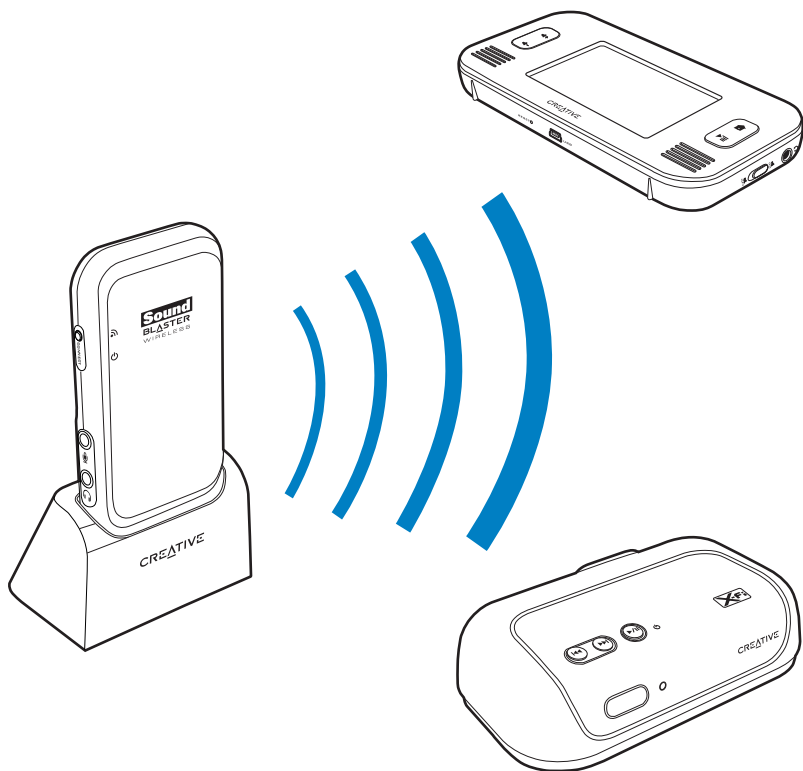


CREATIVE

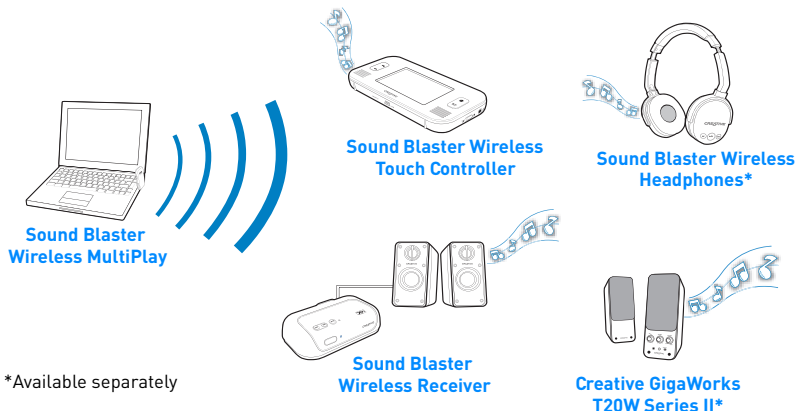


# Sound Blaster Wireless MultiPlay System

User's Guide

## Congratulations!

The Sound Blaster® Wireless MultiPlay System, combined with the Creative Music Server software, lets you playback and control different music simultaneously wherever you are in your home, wirelessly. You can expand your wireless system by adding on other Sound Blaster Wireless devices.



\*Available separately

**NOTE** • The following terms used throughout this User's Guide refer to these devices:

- **Transmitter:** Sound Blaster Wireless MultiPlay
- **Controller:** Sound Blaster Wireless Touch Controller
- **Receiver:** Sound Blaster Wireless Receiver
- You may add up to four receivers, including Sound Blaster Wireless headphones and speakers, if you are managing different output streams.
- For latest information on other Sound Blaster Wireless devices available to expand your wireless system, visit [www.soundblaster.com](http://www.soundblaster.com).

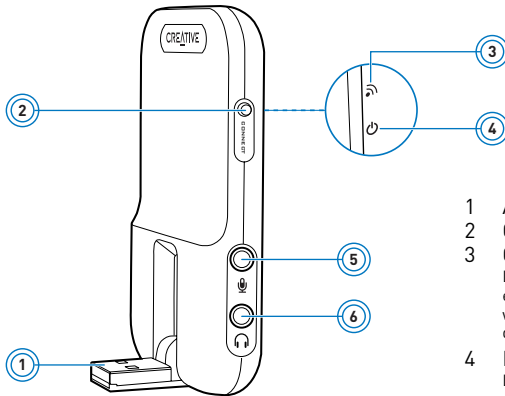
## System Requirements

### Minimum Requirements

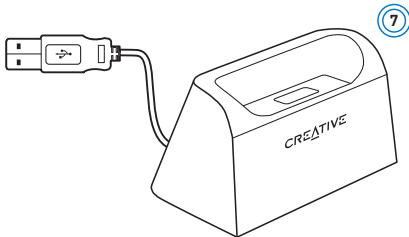
- Microsoft® Windows® 7 32-bit or 64-bit, Windows Vista® 32-bit or 64-bit with Service Pack 1 or higher, Windows XP Professional x64 Edition, Windows XP with Service Pack 2 or higher, Windows XP Media Center Edition (MCE) 2004 or later
- Intel® Core™ Duo, AMD Athlon™ 64x2 Dual Core or equivalent processor, 2.4 GHz or faster
- Intel, AMD® or 100% compatible motherboard chipset
- 1 GB RAM (2 GB RAM recommended)
- 600 MB of free hard disk space
- Available USB 2.0 port (For support of up to 4 independent audio streams. USB 1.1 supports only up to 2 independent audio streams.)
- CD or DVD drive, OR a broadband internet connection (required for software installation)

# About Your Devices

## Sound Blaster Wireless MultiPlay (Transmitter)



- 1 Adjustable USB connector
- 2 Connect button
- 3 Connect LED  
Lights up green when wireless streaming is enabled and ready. Flashes to indicate pairing with a wireless receiver or other supported device.
- 4 Power LED  
Lights up blue when connected to the computer's USB port and computer is turned on. Flashes when volume is muted.
- 5 Microphone/Line In jack
- 6 Headphone/Line Out jack
- 7 USB extension docking station  
See Note below.

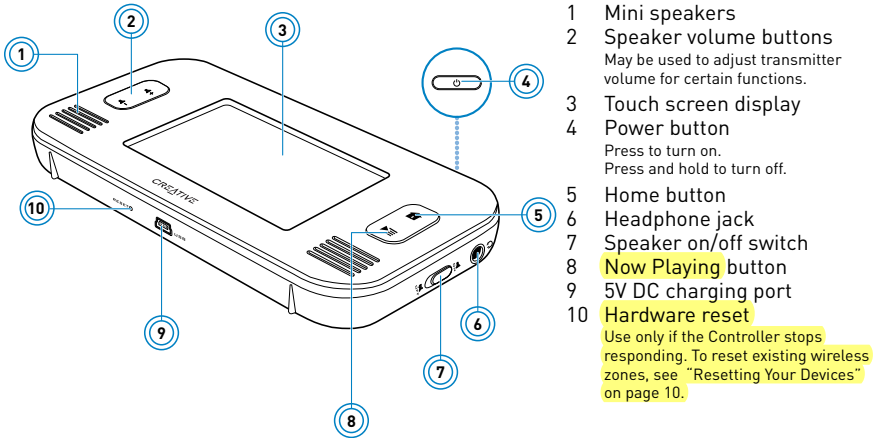


**NOTE** The USB extension docking station allows you to:

- Connect the Transmitter to your computer if it is not physically possible to connect directly to the USB port due to obstruction of neighboring USB devices.
- Extend or move the Transmitter to another location with better wireless reception.

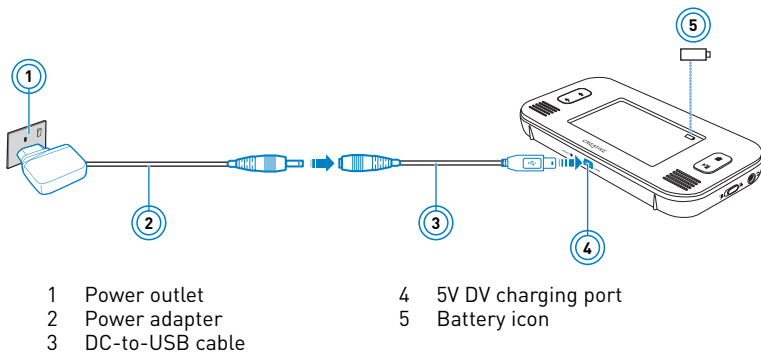
## Sound Blaster **Wireless** Touch Controller (Controller)

The Controller is a wireless receiver designed to let you remotely control the Transmitter's music playback and wireless features.

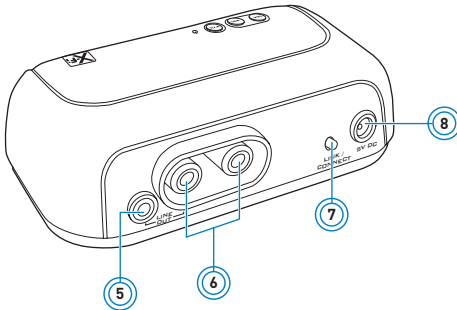
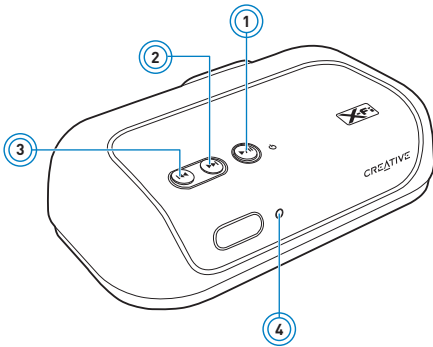


## Charging the Controller

Before first use, charge the Controller for at least 6 hours. When fully charged, the "battery full" icon is displayed on the display screen.

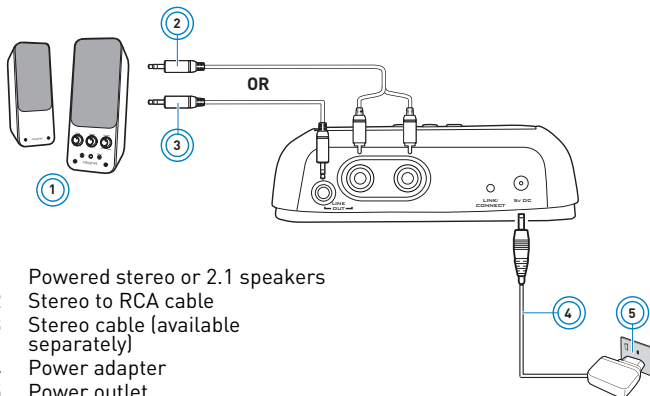


## Sound Blaster Wireless Receiver (Receiver)



- 1 **Power/Standby and Play/Pause button**  
Press to turn on.  
Press and hold to enable Standby mode.
- 2 **Next/Fast forward button**  
Press and hold to Fast forward.
- 3 **Previous/Rewind button**  
Press and hold to Rewind.
- 4 **Power LED**  
Lights up when turned on. Lights up red when on standby mode.
- 5 **Line Out jack**
- 6 **RCA Audio Line Out jacks**
- 7 **Connect LED button**  
Lights up green when paired with transmitter. Flashes to indicate pairing in progress.
- 8 **5V DC In jack**

## Connecting Speakers to your Receiver



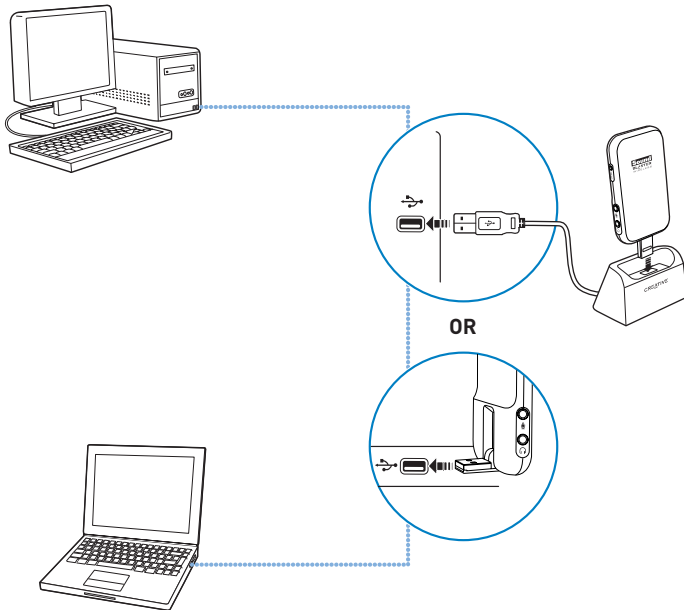
- 1 **Powered stereo or 2.1 speakers**
- 2 **Stereo to RCA cable**
- 3 **Stereo cable (available separately)**
- 4 **Power adapter**
- 5 **Power outlet**

# Setting Up Your Wireless System

This section shows you how to set up your wireless system consisting of your Transmitter, Controller and Receiver.

- Step 1: Connect the Transmitter to your computer's USB port ... page 5
  - Step 2: Install Software ... page 6
  - Step 3: Set up the Transmitter ... page 6
  - Step 4: Pair the Controller. ... page 8
  - Step 5: Pair the Receiver ... page 9
- TIP**
- While doing the setup, place your devices near each other and pair (wirelessly connect) them before placing your receivers at other locations up to 30 meters away from the Transmitter.
  - Signal quality between the Transmitter and Receiver/Controller may be affected by any object or structure (for example, multiple walls) that is between the units. Experiment with different positions if necessary.

## Step 1: Connect the Transmitter to your computer's USB port



## Step 2: Install Software

To control your wireless music streaming and manage separate playlists for each zone, you must install the drivers and applications provided on the installation CD. If you are using a notebook that does not have a CD-ROM drive, you can download the installation software from [www.soundblaster.com/SBWirelessMultiPlay](http://www.soundblaster.com/SBWirelessMultiPlay).


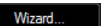
### For all supported Windows OS

- 1 If prompted for the audio drivers, click the **Cancel** button.
- 2 Insert the Installation CD into your CD or DVD drive. Your CD should start automatically. If it does not, follow the steps below:
  - i. Click **Start -> My Computer**.
  - ii. Right-click the CD or DVD drive icon, and then click **Open Autoplay** or **Autoplay**.
- 3 To complete the installation, follow the instructions on the screen.
- 4 When prompted, restart your computer.

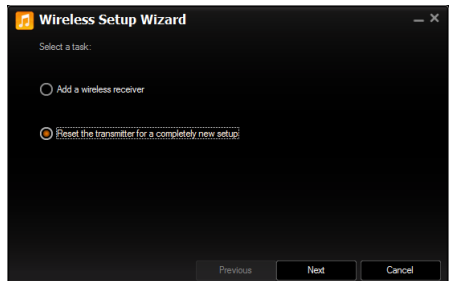
## Step 3: Set up the Transmitter



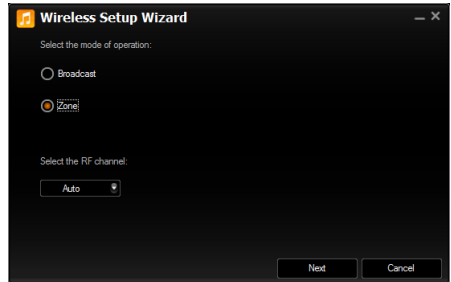
- 1 Click **Start -> Programs** or **All Programs -> Creative -> Sound Blaster Wireless MultiPlay -> Creative Music Server**.

The first time you launch Creative Music Server, the Wireless Setup Wizard will run automatically to guide you through setting up your transmitter and receivers. If not, click the **Wireless Control Setup**  icon, then click the **Wizard**  button.

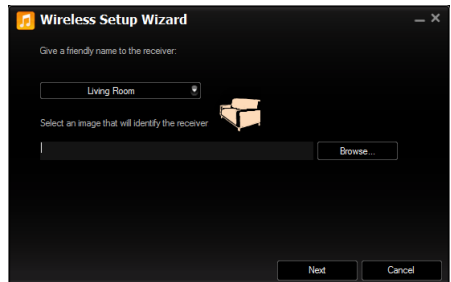
- 2 Select the **Reset the transmitter for a completely new setup** option.



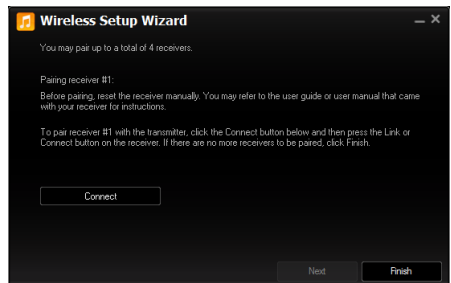
- 3 Select **Zone** for the mode of operation, and **Auto** for the Radio Frequency (RF) channel to use.



- 4 Select "**Sound Blaster Wireless Touch Controller**" from the list as you will be pairing with the Controller next.

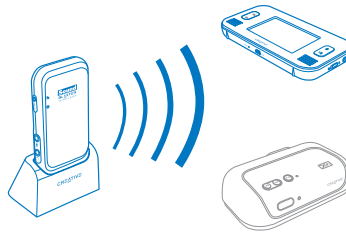


- 5 Click the **Connect** button. You should then proceed to perform the next step within three(3) min to complete the pairing with the Controller.



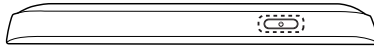


## Step 4: Pair the Controller.

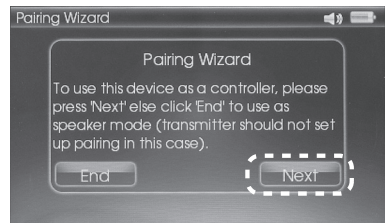


**NOTE** You are allowed to pair only one controller for each wireless system.

- 1 Press the Power button on the Controller to turn it on.



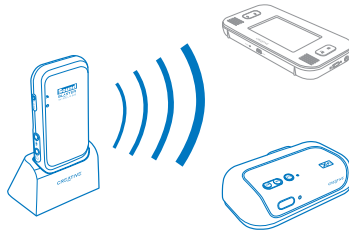
- 2 Tap **Next** on the Pairing Wizard screen.



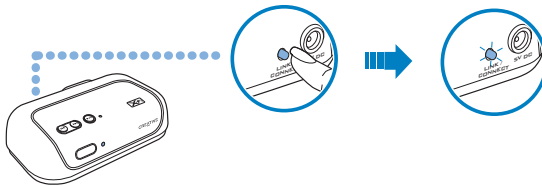
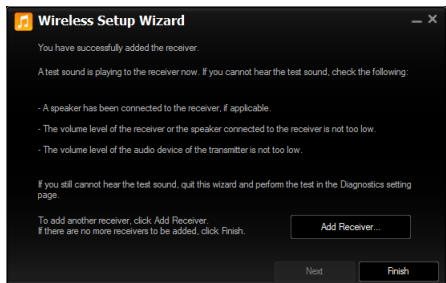
- 3 Tap **Connect**.  
Once paired, the Connect LED on the transmitter will light up green and a Zone will be shown on the Controller.
- 4 A test tone will be played to the Controller to confirm the connection.



## Step 5: Pair the Receiver




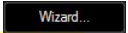
- 1 Click the **Add Receiver...** button on the Wireless Setup Wizard window.
- 2 Select **Zone** for the mode of operation, and **Auto** for the Radio Frequency (RF) channel to use.
- 3 Select **“Sound Blaster Wireless Receiver”** from the list. Alternatively, you can enter or select an appropriate label and image for the Receiver (e.g., select **“Bedroom”** if the Receiver will eventually be placed in the bedroom).
- 4 Click the **Connect** button.
- 5 Turn on your Receiver and the attached speakers. Press the Connect button at the back of the receiver. Once the Transmitter and Receiver are paired successfully, the Connect LED lights up green and remain on. You should also hear a test tone played through the speakers that are attached to the Receiver.

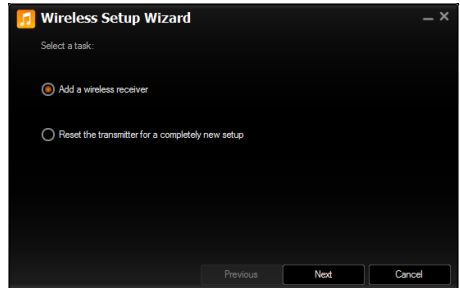


- 6 You can now play and enjoy wireless music throughout your home. For more information on playing and streaming music, see “Playing and Managing Music” on page 12.

## Pairing Additional Receivers

If you wish to reset your transmitter or add more receivers later, follow the steps below:

- 1 Click the **Wireless Control Setup**  icon in Creative Music Server.
- 2 Click the **Wizard**  button.
- 3 Select the **Add a wireless receiver** option, then follow the instructions **on the screen** as described in the previous section, "Step 5: Pair the Receiver".
- 4 Press the Connect button on the receiver to complete the pairing with the transmitter.



## Resetting Your Devices

If you wish to reset the zones of your wireless system and start afresh with your wireless setup, do the following to reset your devices:

- To reset your Transmitter:
  - Press and hold the Transmitter's Connect button for five seconds, OR
  - In Creative Music Server, run the Wireless Setup Wizard and select the **Reset the transmitter for a completely new setup** option.
- To reset your Controller, tap **Settings -> Wireless Settings -> Wireless Reset**.
- To reset your Receiver, press and hold the Receiver's Connect button for five seconds.

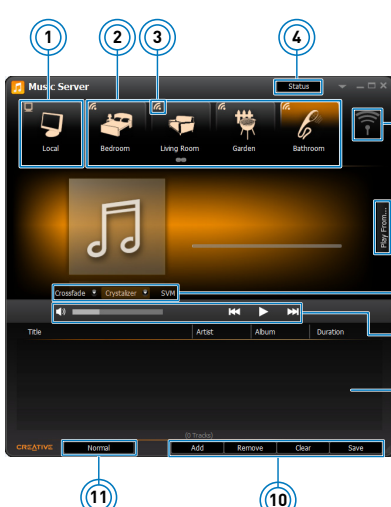
**NOTE** If you unintentionally reset one device, you should also reset the other devices in your wireless system, and then pair them again.

## Using Creative Music Server

Creative Music Server gives you full wireless control over your music streaming and integrates seamlessly with your iTunes® or Windows Media library. You can playback any music tracks in your computer and other sources, such as the audio track of movies and Internet radio from other applications.

Use your existing playlists, or create new ones from your music library. You can have a separate play queue for each of the four wireless zones! You can also adjust your audio settings to get the best audio experience.

### Overview



The screenshot shows the Creative Music Server application window. It features a top navigation bar with icons for Local, Bedroom, Living Room, Garden, and Bathroom, each with a numbered callout (1-5). A 'Status' button is in the top right (4). A 'Wireless Control Setup' button is on the right (6). The main area displays a music player interface with a 'Play From...' button (7), playback controls (8), and a play queue window (9). At the bottom, there are buttons for 'Normal', 'Add', 'Remove', 'Clear', and 'Save' (10, 11).

- 1 Local zone
- 2 Wireless zones  
Lets you control playback to your headphones/speakers that are connected to your Transmitter.
- 3 Standby toggle  
Click to control music streaming to that zone.
- 4 Check status of all zones
- 5 Wireless Control Setup  
Manage your wireless settings.
- 6 Play From...  
Opens the Sources window to browse your computer for music and playlists.
- 7 Audio settings  
Lets you adjust audio enhancement settings. See **Adjusting Audio Settings** on page 13.
- 8 Music playback controls
- 9 Play queue window
- 10 Play Queue management  
Manage tracks in your play queue and save them as playlists.
- 11 Click to select playback mode:  
- Normal, Repeat All, Repeat Track or Shuffle.

#### TIP

Right-click on the interface for more software options.

## Using the Controller

Apart from using Creative Music Server, your Controller gives you the additional flexibility to control your music playback and wireless features wherever you are, away from the PC. In the following sections, you will learn how to manage your music and wireless features using either Creative Music Server or the Controller.


# Playing and Managing Music

## Playing Music

### Using Creative Music Server

- 1 Click the zone you wish to stream music to. This step is not required if you are in Broadcast mode.
- 2 Click the **Play From...** button to display the **Music Server - Sources** window. You can browse through your computer for songs or playlists, then click and drag them into the play queue window. You can press and hold the Shift key to click and select multiple tracks.



- 3 Select a song, then click .

### Using the Controller

- 1 From the Home screen, tap the zone you wish to stream music to.
- 2 Select a song by tapping the track title, then tap **Play**.

## Managing Play Queues

A “play queue” contains a list of tracks that you have selected for a particular zone. Use the Play Queue management controls to add or remove tracks from the current play queue, or you can save the current play queue as a playlist so that you can easily retrieve it in the future.



To retrieve your saved playlists, click the **Play From...** button to display the **Sources** window, then click the **My Playlist Library** tab.

## Adjusting Audio Settings

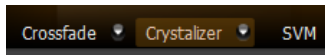


You can enhance your music listening experience with these settings:

**Crossfading** is used to create smooth transitions between songs by fading out the volume at the end of one song and fading in the volume of the next song gradually.

**Crystalizer** restores the natural dynamic range that is lost when iTunes and MP3 music gets compressed.

**Smart Volume Management (SVM)** monitors the volume level across different audio sources and music tracks to prevent sudden changes in volume level from disrupting the listening experience.



### Using Creative Music Server

- 1 Click the **CrossFade** or **Crystalizer** button, then drag the slider to adjust the amount of enhancement to apply to your music output.
- 2 Click the **Smart Volume** button to toggle this enhancement on or off.

### Using the Controller

- 1 Tap **Settings** -> **System Settings** -> **Audio Settings**.
- 2 Tap **CrossFade** or **Crystalizer**, then drag the slider to adjust the amount of enhancement to apply to your music output. .
- 3 Tap **Smart Volume** to toggle this enhancement on or off.



## Managing Broadcast and Zone modes

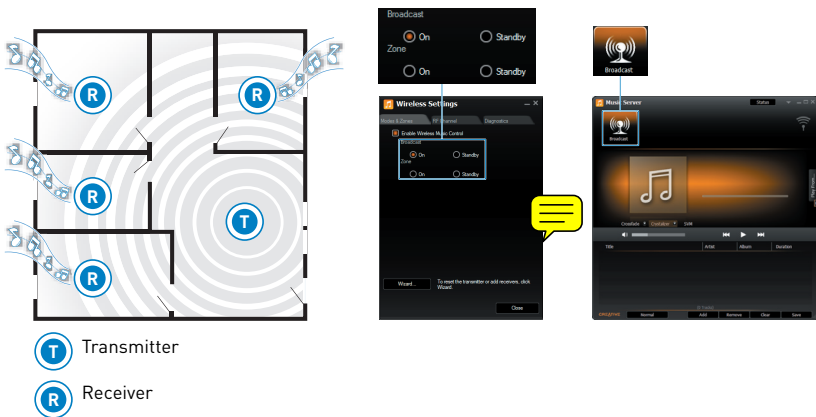
Use the **Broadcast** feature to playback the same song to all your receivers simultaneously. This quick and easy method is perfect for occasions such as parties when you want everyone to listen to the same song throughout your home.

Use the **Zone Control** feature to allow people in your home to listen to the songs they want, and each zone can have their own playlist. For example, you can playback classical music in your study, and playback the latest pop hits in the living room.

### Broadcasting

#### Using Creative Music Server

- 1 Click the **Wireless Control Setup**  icon.
- 2 Under Broadcast, click the **On** option, then close the Wireless Settings window.
- 3 Select the song you wish to stream, then click .





#### Using the Controller

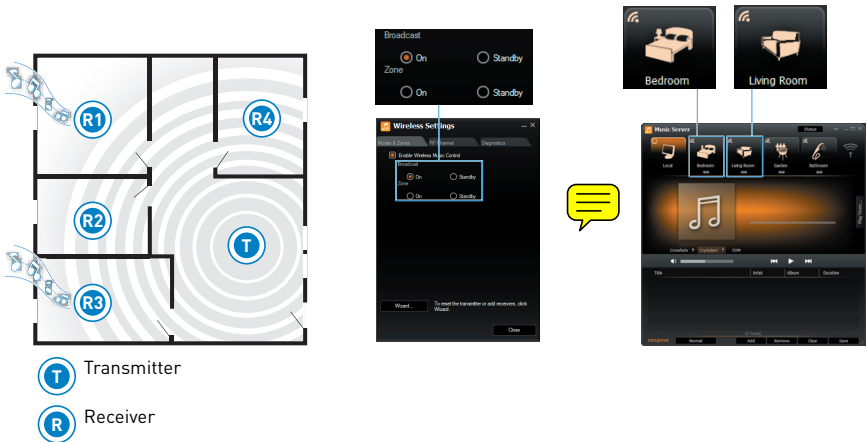
- 1 Tap **Settings** -> **Wireless Settings** -> **Modes and Zones**.
- 2 Under Broadcast, tap **ON**. Then tap **Done**.
- 3 OR Select one of the "link" icon at main screen and select Play All.


## Zone Control

Your transmitter and receivers may automatically pair with each other the first time they are switched on. However, to use zone control, you must manually pair your transmitter and receivers so that the zones are correctly assigned. To do this, follow the steps in “Setting Up Your Wireless System” on page 5.

### Using Creative Music Server

- 1 Click the **Wireless Control Setup**  icon.
- 2 Under Zone, click the **On** option, then close the Wireless Settings window.
- 3 Select the zone to stream music to.
- 4 Select the song to stream, then click .
- 5 Repeat steps 3 and 4 for streaming music to other zones.



**TIP** Click the **Standby**  icon on the zone to turn on/off wireless streaming to that zone.

### Using the Controller



- 1 Tap **Settings** -> **Wireless Settings** -> **Modes and Zones**.
- 2 Under Zone, tap **ON**. Then tap the zones you wish to enable wireless streaming to.
- 3 Tap **Done** when you have completed your selection.
- 4 Tap **Yes** to confirm the selection.

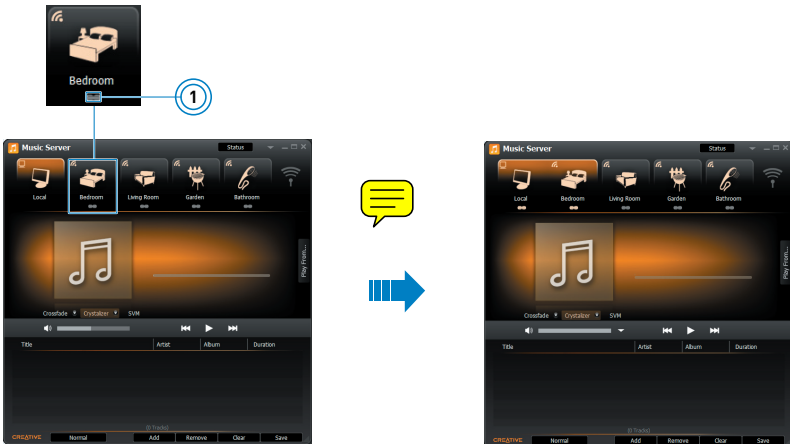


## Grouping Zones

Zones that are grouped together share the same play queue. Each zone can only belong to one group, but you can create multiple groups. Each group can have their own play queue. This lets you play songs to only some of your receivers simultaneously. For example, you can group the kitchen and dining room together for classical music, and group the living room and the bedroom for rock music.

### Using Creative Music Server

- 1 Click the inactive **Link**  icon below the zone that you wish to group with the currently selected zone. To ungroup the zone, click the active **Link**  icon below the zone you wish to remove from the currently selected group.



### Using the Controller

- 1 On the Home screen, tap the “link” icon.
- 2 Tap the zones you wish to group.
- 3 Tap **Done** when you have completed your selection.

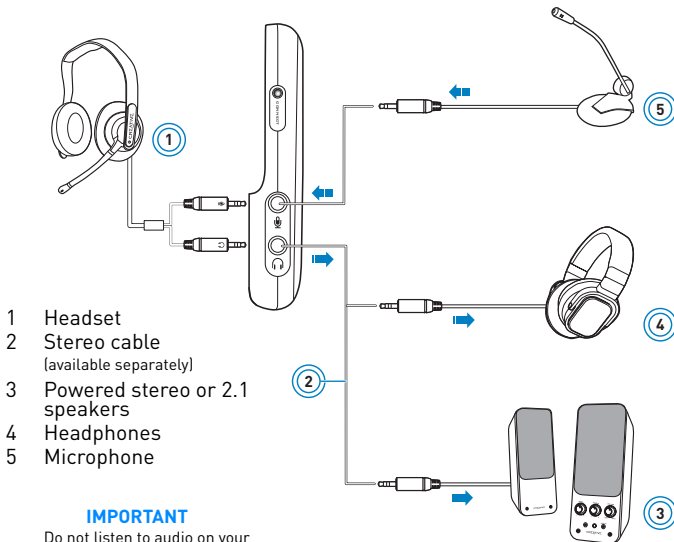
**NOTE** To stream audio generated from other computer applications or web browsers (for example, internet radio, YouTube, etc.) to a particular zone, group that zone with the Local zone.



# Using Your Audio Device

## Communicating with Voice over Internet Protocol (VoIP)

Use a headset and microphone combination, or a headset with your audio device to enjoy outstanding acoustic performance for your VoIP applications like Skype<sup>®</sup>, or instant messaging applications like Yahoo!<sup>®</sup> Messenger.



### IMPORTANT

Do not listen to audio on your headphones or headset at high volumes for prolonged periods of time as hearing loss might result.

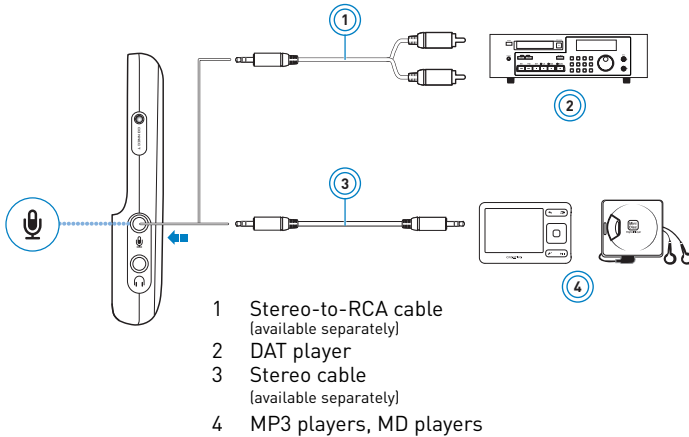
To adjust the microphone recording volume, use the mixer in Creative Entertainment Console and drag the Line-In/Mic-In slider to the desired level.



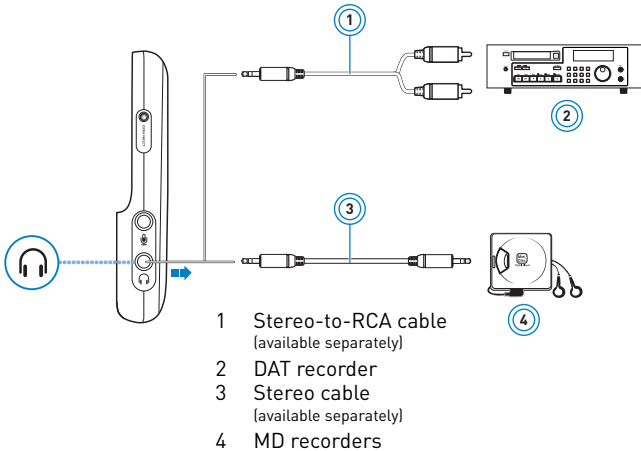
## Playing / Recording Music

You can play music from, and/or record music to external devices (for example, MP3 players, Digital Audio Tape players/recorders and MiniDisc players/recorders) by connecting them to your audio device.

### Playing Music from external devices



### Recording Music to external devices



**NOTE** If you enable line-in monitoring during recording, you should disable the wireless features because you may experience audio latency while streaming your music to your receivers.

## Playing Games

Your audio device is equipped with Creative's cutting edge audio technologies and software to enhance the audio in your games.

### **EAX ADVANCED HD**

Make your games come alive with EAX<sup>®</sup> ADVANCED HD<sup>™</sup>!

Hear multiple audio effects being played simultaneously, and precise environment settings applied to them to create a life-like environment and heighten the sense of realism.

Each effect is also accurately positioned in its 3D environment, allowing you to tell where it is coming from relative to your location.

### **Crystalizer**

With Crystalizer<sup>®</sup>, your audio content is re-mastered in real-time to enhance the highs and lows to give you a greater dynamic range.

## Software Suite

The included software is designed for you to access the basic as well as the advanced features of your audio device. For more information on each application, refer to its online help.

### **Creative Software Suite**

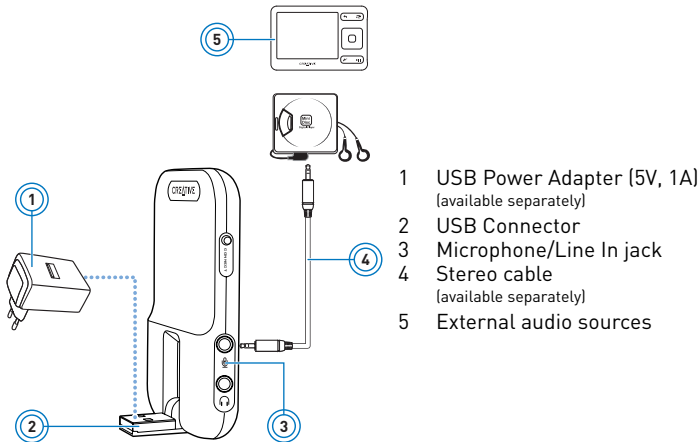
For PC:

- Audio Control Panel
- Entertainment Console
- Creative Music Server
- Creative ALchemy
- Creative Sound Blaster Plugin for Windows Media Center Edition
- Volume Panel

- NOTE**
- The applications included with your audio device may differ from those listed here. Your audio device may also come with third party applications.
  - Some applications are available for certain operating systems only.

## Standalone Operation (Optional)

You can also use Sound Blaster Wireless MultiPlay as a standalone transmitter for your other audio playback devices. If you choose to use it in this manner, you can enjoy only one wireless music stream which is transmitted to all receivers (Broadcast mode). Your Controller will simply function as speakers, and no additional controls will be available.



- 1 USB Power Adapter (5V, 1A)  
(available separately)
- 2 USB Connector
- 3 Microphone/Line In jack
- 4 Stereo cable  
(available separately)
- 5 External audio sources

## Auto Pairing

Your transmitter and receivers pair automatically when turned on. The Connect LEDs on your receivers flash and then light up green when pairing is successful.

**NOTE** If your transmitter and receiver do not pair, simply reset them. On one unit at a time, press and hold the Connect button for five seconds.

If you have paired your transmitter and receivers previously, you can reset them by holding down the Connect button on the units for five seconds.

## Manual Pairing

Although your transmitter and receivers may pair automatically, you may wish to manually pair them to establish a more robust wireless connection.

- 1 Press the Connect button on your transmitter. The transmitter's Connect LED flashes.
- 2 Press the Connect button on your first receiver. This must be done within three minutes after pressing the Connect button on the transmitter (Step 1). Once the transmitter and receiver are paired successfully, the Connect LED on both units light up green and remain on.
- 3 Press the Connect button on your transmitter again.
- 4 Press the Connect button on your second receiver. Once paired successfully, the Connect LED on both units light up green and remain on. Repeat the steps 3 and 4 to pair your third and fourth receivers (if applicable).

# Troubleshooting

## Problems with Sound

### No sound from headphones or speakers.

Check the following:

- The default sound playback device under Microsoft Volume panel shows the correct audio device. If the audio device selected is correct, refer to “**Problems with Multiple Audio Devices**”
- If any audio applications were running when your audio device was plugged in, close and open them again.
- The headphones or powered speakers are connected to the audio device’s Headphone/ Line Out jack.

### No audio output when playing digital files such as .WAV, MIDI files or AVI clips.

Check the following:

- The speakers’ volume control knob, if any, is set at mid-range. Adjust the playback volume in Creative Music Server or Microsoft Volume panel, if necessary.
- There is no hardware conflict between the audio device and a peripheral device.
- The speakers and headphone selection in Entertainment Console corresponds to your speaker or headphone configuration.

### There is clipping/distortion during audio playback.

Check the following:

- Your computer system should be running in high performance mode. You may need to disable any power saving features.

## Problems with Multiple Audio Devices

### The onboard audio chipset seems to be in conflict with the Transmitter.

Disable your computer’s onboard audio chipset. See your computer’s motherboard documentation for details

## Problems with Wireless Features

### Music is not being transmitted to my paired devices.

Check the following:

- Your Transmitter and your paired devices are turned on.
- Your Controller’s speaker on/off switch is set to ON, and headphones have not been connected to your Controller’s headphone jack.
- Your Transmitter’s wireless features are enabled by default and the device’s Connect LED should light up green. If not, do the following:
  - 1 Launch Creative Music Server.
  - 2 Click the Wireless Control Setup icon.

- 3 Select the **Enable Wireless Music Control** check box.



### The receivers seem to be picking up extra noise, or there are intermittent pauses.

The position of your Sound Blaster Wireless devices as well as signals from other wireless routers or Bluetooth equipment may affect the quality of the transmissions.

Try the following:

- In the Wireless Music Control section of Creative Music Server, change the RF Channel from Auto to either Ch 1, 2 or 3.
- Place your transmitter and receivers closer to each other. For best performance, your devices should be operating on the same floor. Use the docking station for more flexibility in placing your transmitter.
- Place your transmitter away from other devices that transmit wireless signals, and away from large metal surfaces.
- Reposition your devices so that there are fewer objects (for example, multiple walls or large metal structures) between them.
- Set your wireless LAN router's channel to Auto, 1 or 11. To do this, refer to your router's user documentation.
- Refrain from doing large file transfers via the wireless internet or Bluetooth connection while you are streaming music. Alternatively, stop streaming music during intensive file transfers.

# General Specifications

## Connectivity

### Sound Blaster Wireless MultiPlay

- One 3.5 mm (1/8") stereo jack for Analog Line In or Microphone
- One 3.5 mm (1/8") stereo jack for Analog Line Out or Headphones

### Sound Blaster Wireless Touch Controller

- One 3.5 mm (1/8") stereo jack for Headphones

### Sound Blaster Wireless Receiver

- One 3.5 mm (1/8") stereo jack for Analog Line Out
- A pair of RCA jacks for Analog Line Out

## Power Adapter

- Supply Voltage: 5V +/- 5%
- Current: 1 A
- Power: 5 W

## Common to all devices

### Interfaces

- Sound Blaster Wireless **technology transmitter to** connect with supported wireless devices.

### Radio Frequency (RF)

- Operating RF range: 2400 - 2483.5 MHz
- Number of RF channels: 3
- RF transmitter power output: 16 dBm (typical)

**NOTE** **You cannot tune the RF channels.**



# Safety Information

Refer to the following information to use your product safely, and to reduce the chance of electric shock, short-circuiting, damage, fire, hearing impairment or other hazards. **Improper handling may void the warranty for your product. For more information, read the warranty available with your product.**

- Read these instructions.
  - Keep these instructions.
  - Heed all warnings.
  - Follow all instructions.
  - Do not use this apparatus near water.
  - Clean only with dry cloth.
  - Do not block any ventilation openings. Install the product in accordance with the instructions.
  - Do not install near heat sources such as radiators, heat registers, stoves, or other apparatus (including amplifiers) that produce heat.
  - Do not expose your product to temperatures outside the range of 0°C to 40°C (32°F to 104°F).
  - Do not pierce, crush or set fire to your product.
  - Keep your product away from strong magnetic objects.
  - Do not subject your product to excessive force or impact.
  - Do not defeat the purpose of the polarized or grounding-type plug. A polarized plug has two blades with one wider than the other. A grounding type plug has two blades and a third grounding prong. The wide blade or the third prong are provided for your safety. If the provided plug does not fit into your outlet, consult an electrician for replacement of the obsolete outlet.
  - Protect the power cord from being walked on or pinched particularly at plugs, convenience receptacles, and the point where they exit from the apparatus.
  - Only use attachments/accessories specified by the manufacturer.
  - Use only with the cart, stand, tripod, bracket or table specified by the manufacturer, or sold with the apparatus. When a cart is used, use caution when moving the cart/apparatus combination to avoid injury from tip-over.
  - Unplug this apparatus during lightning storms or when unused for long periods of time.
  - Do not dismantle or attempt to repair your product.
- Refer all servicing to authorized and qualified service personnel.** Servicing is required when the apparatus has been damaged in any way, such as power-supply cord or plug is damaged, liquid has been spilled or objects have fallen into the apparatus, the apparatus has been exposed to rain or moisture, does not operate normally, or has been dropped.
- **WARNING:** To reduce the risk of fire or electric shock, do not expose your product to water or moisture. If your product is moisture-resistant, take care not to immerse your product in water or expose it to rain.

## Earphones

- When a conductive apparatus, such as earphones, is used in close proximity with a CRT television or CRT monitor, the latter may emit an electrostatic discharge. The electrostatic discharge can be felt as a static shock. While this static shock is usually harmless, it is good practice to avoid close contact with CRT devices when using earphones.
- Do not listen to audio on your earbuds or headphones at high volume for prolonged periods of time as hearing loss may result. For users in the United States, go to [www.hei.org](http://www.hei.org) for more information.
- Do not listen to your audio device at high volume when driving, cycling or crossing the road, especially in heavy traffic, or in any other traffic condition where such use will hinder safe travel on the roads. We recommend that consumers be extremely cautious when using this device on the road.

## Embedded Battery

- Do not attempt to remove the embedded battery. The product must be disposed of according to local environmental regulations. To replace the battery, return your product to your regional support office. For product service information, go to [www.creative.com](http://www.creative.com).

## Wireless Device

- Switch off the device where it is prohibited, or when its use may cause danger or interference such as inside an aircraft, hospitals, or near refuelling points.

# Regulatory Information

## Notice for the USA

**FCC Part 15:** This equipment has been tested and found to comply with the limits for a Class B digital device, pursuant to Part 15 of the FCC Rules. These limits are designed to provide reasonable protection against harmful interference in a residential installation. This equipment generates, uses and can radiate radio frequency energy and, if not installed and used in accordance with instructions, may cause harmful interference to radio communications. However, there is no guarantee that interference will not occur in a particular installation. If this equipment does cause harmful interference to radio or television reception, which can be determined by turning the equipment off and on, the user is encouraged to try to correct the interference by one or more of the following measures:

- Reorient or relocate the receiving antenna.
- Increase the separation between the equipment and receiver.
- Connect the equipment into an outlet on a circuit different from that to which the receiver is connected.
- Consult the dealer or an experienced radio/TV technician for help.

This device complies with part 15 of the FCC Rules. Operation is subject to the following two conditions:

- 1 This device may not cause harmful interference, and
- 2 This device must accept any interference received, including interference that may cause undesired operation.

**CAUTION:** To comply with the limits of the Class B digital device, pursuant to Part 15 of the FCC Rules, this device must be installed with computer equipment certified to comply with Class B limits.

All cables used to connect to the computer and peripherals must be shielded and grounded. Operation with non-certified computers or non-shielded cables may result in interference to radio or television reception.

**MODIFICATION:** Any changes or modifications not expressly approved by the grantee of this device could void the user's authority to operate the device.



**WARNING:** To satisfy FCC RF exposure requirements for mobile transmitting devices, a separation distance of 20 cm or more should be maintained between the antenna of this device and persons during device operation.

To ensure compliance, operations at closer than this distance is not recommended. The antenna used for this transmitter must not be co-located in conjunction with any other antenna or transmitter.

## California Proposition 65 Statement

**WARNING:** Handling this product may expose you to chemicals known to the State of California to cause cancer and birth defects or other reproductive harm.

### Wash hands after handling.

**Explanatory Note:** California Safe Drinking Water and Toxic Enforcement Act of 1986 (Proposition 65) requires special product labeling for products containing certain chemicals known to the State of California to cause cancer, birth defects or other reproductive harm. Creative has chosen to provide a warning based on its knowledge about the presence of one or more listed chemicals without attempting to evaluate the level of exposure. With Creative's products, the exposure may be below the Proposition 65 level of concern, or could even be zero. However, out of an abundance of caution, Creative has elected to place the Proposition 65 warning on its products.

### Déclaration de la Proposition 65 de la Californie

**AVERTISSEMENT:** La manipulation de ce produit peut vous exposer à des produits chimiques qui sont reconnus par l'État de la Californie comme pouvant provoquer le cancer, des anomalies congénitales ou d'autres effets nuisibles à la reproduction.

### Veillez vous laver les mains après l'avoir manipuler.

**Note explicative:** La Proposition 65 (California Safe Drinking Water and Toxic Enforcement Act of 1986) de la Californie sur les matières dangereuses et l'eau potable exige un étiquetage spécial pour les produits contenant certains produits chimiques qui sont reconnus par l'État de la Californie comme pouvant provoquer le cancer, des anomalies congénitales ou d'autres effets nuisibles à la reproduction. Creative a choisi d'inclure une mise en garde s'appuyant sur sa connaissance de la présence d'un ou de plusieurs de ces produits chimiques sans essayer d'en évaluer le niveau d'exposition. Pour les produits de Creative, le

niveau d'exposition peut être inférieur au niveau critique établi par la Proposition 65 ou même être nul. Néanmoins, par souci extrême de prudence, Creative a choisi de placer l'avertissement de la Proposition 65 sur ses produits.

## European Compliance

This product conforms to the following:

EMC [Directive 2004/108/EC](#).

Mains operated products for the European market comply with Low Voltage Directive 2006/95/EC.

Communication / RF wireless products for the European market comply with R&TTE Directive 1999/5/EC.

**CAUTION:** To comply with the Europe CE requirement, this device must be installed with CE certified computer equipment which meet with Class B limits.

All cables used to connect this device must be shielded, grounded and no longer than 3m in length.

Operation with non-certified computers or incorrect cables may result in interference to other devices or undesired effects to the product.

**MODIFICATION:** Any changes or modifications not expressly approved by Creative Technology Limited or one of its affiliated companies could void the user's warranty and guarantee rights.

## WEEE DIRECTIVE 2002/96/EC



The use of the WEEE Symbol indicates that this product may not be treated as household waste. By ensuring this product is disposed of correctly, you will help protect the environment. For more detailed information about the recycling of this product, please contact your local authority, your household waste disposal service provider or the shop where you purchased the product.

## BATTERIES DIRECTIVE 2006/66/EC



### For Removable Battery

This product may contain one or more of the following removable batteries:

Li-ion/polymer, button/coin cells, cylindrical cells. In this case, the following applies:

The crossed-out wheeled bin symbol indicates that the battery in this product should not be treated as unsorted municipal waste upon reaching its end of life. Instead it should be taken to separate collection and recycling schemes. Batteries containing heavy metal content will have a two-letter symbol for the chemical under the crossed-out wheeled bin symbol. 'Cd' stands for cadmium, 'Pb' for lead, and 'Hg' for mercury. You can help the environment and avoid public health hazards by recycling the battery at an authorized recycling facility or the place of purchase. To find the nearest authorized recycle centre contact your local authority. Instructions for removing the battery can be found in the product user manual. The instructions should be followed carefully before attempting to remove the battery.

### For Integrated Battery

This product may contain a Lithium ion/polymer battery that should only be removed by an authorized recycling centre. By recycling this product at your local authorized recycling centre or the place of purchase, the battery will be removed and recycled separately.

Information in this document is subject to change without notice and does not represent a commitment on the part of Creative Technology Ltd. No part of this manual may be reproduced or transmitted in any form or by any means, electronic or mechanical, including photocopying and recording, for any purpose without the written permission of Creative Technology Ltd.

Copyright © 2009 Creative Technology Ltd. All rights reserved. Creative, the Creative logo, Sound Blaster, X-Fi, CMSS, Crystalizer, EAX and GigaWorks are trademarks or registered trademarks of Creative Technology Ltd. in the United States and/or other countries. Microsoft, Windows and Windows Vista are registered trademarks of Microsoft Corporation. All other products are trademarks or registered trademarks of their respective owners.

Version 1.0

April 2010