

Getting Started

Thank you for choosing Creative Sound BlasterAxx, the next generation Sound Blaster® that incorporates the powerful Sound Core3D™ sound and voice processor. It is equipped with speaker and microphone functions for both listening and conferencing capabilities. The SBX 10 / SBX 20 (SB1390 / SB1360) model design provides portability and low power consumption without compromising your audio pleasure.

The SBX 10 / SBX 20 comprises both right and left drivers within a single tower structure. This system is equipped with the following features:

- Portable form makes it ideal for laptop usage
- High quality audio
- Seamless support for various operating systems including Windows® 8, Windows 7, Windows Vista® and Mac® OS.
- Power efficient and environmentally friendly with its low power amplifier technology
- Specialized software for different speaker enhancements and configurations
- SBX Pro Studio audio enhancements
- Built-in stereo microphones with CrystalVoice technology
- Built-in *Bluetooth*® Transceiver

Package Checklist

Your Sound BlasterAxx SBX 10 / SBX 20 package comes with the following components

- The Sound BlasterAxx SBX 10 / SBX 20 tower
- MicroUSB cable

System Requirements

- Intel Core™2 Duo processor 2.2 GHz, AMD Athlon 64x2 Dual Core or equivalent processor
- Microsoft® Windows 8 64-bit, Windows 8 32-bit, OR
Microsoft Windows 7 64-bit, Windows 7 32-bit, OR
Microsoft Windows Vista 64-bit, Windows Vista 32-bit, OR
Macintosh OS 10.5 and above
- Powered USB 2.0 port

Registering Your Product

Registering your product ensures you receive the most appropriate service and product support available. You can register your product during installation or at www.creative.com/register. Please note that your warranty rights are not dependent on registration.

More Help

For the latest news and products for the Sound Blaster, please visit www.soundblaster.com. The site also includes information on making purchases, technical help and the latest software updates.

Using Creative Software AutoUpdate

Locating, downloading and installing updates for your Creative products is now simpler and faster with the web-based Creative Software AutoUpdate system.

When you connect to Creative Software AutoUpdate via the Internet, the website will analyze your computer system to determine your operating system, language and which Creative products are connected to your system.

When this analysis is completed, you will then be given a list of only the most relevant software updates for your connected products. The files can then be retrieved and installed.

To learn more about the Creative Software AutoUpdate, please visit www.soundblaster.com/support.

Note:

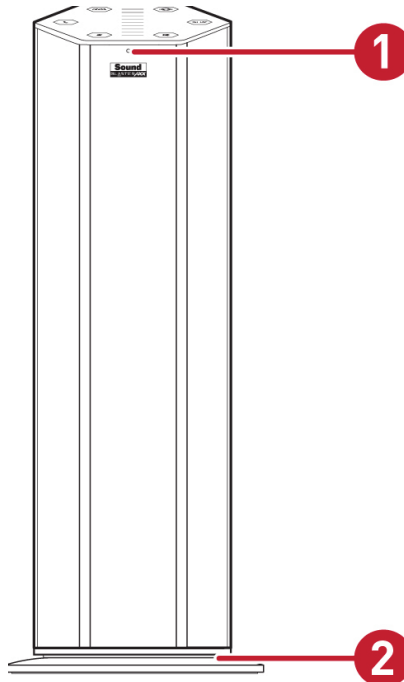
*First-time users of Creative Software AutoUpdate may be prompted to authorize the download of a browser component required for system analysis. Check to ensure that this content is signed by Creative Labs, Inc., then click the **Yes** button.*

Please ensure that all your Creative products are connected and installed on the same computer running Creative Software AutoUpdate.

Understanding Your Sound BlasterAxx

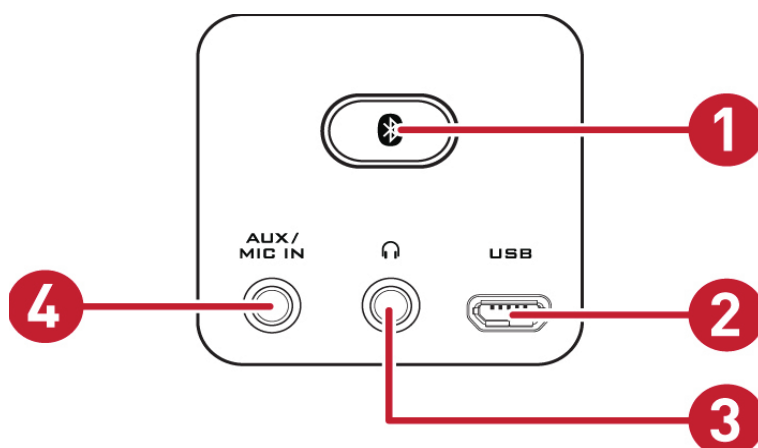
The SBX 10 / SBX 20 is equipped with a variety of input and output jacks to enable connection to various devices. A touchscreen interface located at the top of the Sound BlasterAxx gives you basic control over the system's functions. This chapter looks at these features in detail.

The Sound BlasterAxx Tower



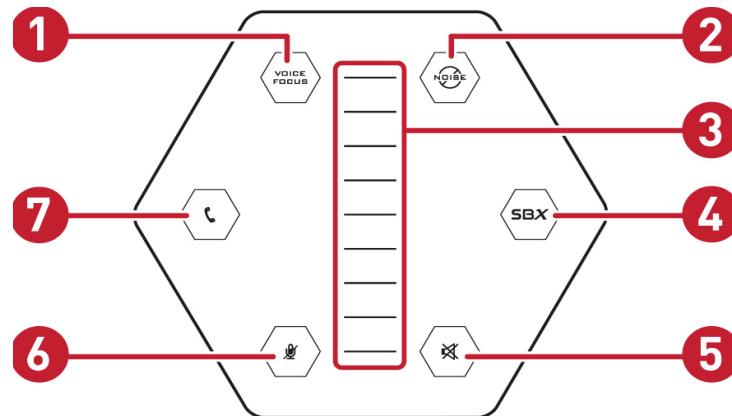
	Jack	Description
1	LED Button	<p>A white LED indicates that the Sound BlasterAxx is on. The Sound BlasterAxx is automatically powered on when a valid power source is connected to it. Power sources include:</p> <ul style="list-style-type: none">• PC / Laptop via the microUSB cable• Power socket connected to the power adapter (available separately)• USB battery pack (not included) <p>A blue LED indicates that the Sound BlasterAxx is connected with a <i>Bluetooth</i> enabled device.</p>
2	Base	<p>The SBX 20 comes with a base packed separately in the box.</p> <ul style="list-style-type: none">• Attach the base onto the bottom of the Sound BlasterAxx and tighten it gently by screwing it clockwise.• To detach the base, screw it counterclockwise and remove it from the Sound BlasterAxx. <p>Note: Only available for the SBX 20 model.</p>

Connectivity - Input / Output Jacks



	Jack	Description
1	Connect Button	<p>A blue LED indicates that the Sound BlasterAxx is connected with a <i>Bluetooth</i> enabled device.</p> <ul style="list-style-type: none"> • Ensure the Sound BlasterAxx is powered on. • Press and hold Connect button for 4 seconds to enter pairing mode. • Turn on <i>Bluetooth</i> feature on your device. • Search and select Sound BlasterAxx SBX 20 or Sound BlasterAxx SBX 10. If password is required, enter 0000 and connect to it. <p>Note: Enable the "<i>Bluetooth Auto Connect</i>" feature to connect to a paired <i>Bluetooth</i> device automatically when the Sound BlasterAxx is turned on. Refer to Advanced Feature for details.</p>
2	MicroUSB	Connects to USB ports of PC / laptop for audio output.
3	Headphone	Connects to stereo headphones with a 3.50mm (1/8-inch) plug.
4	Aux / Mic In	Connects to line-level sources (such as MP3 players) or microphones with a 3.50mm (1/8-inch) plug. You can manually switch between AUX and MIC inputs via the Control Panel > Sound interface.

TouchScreen Controls

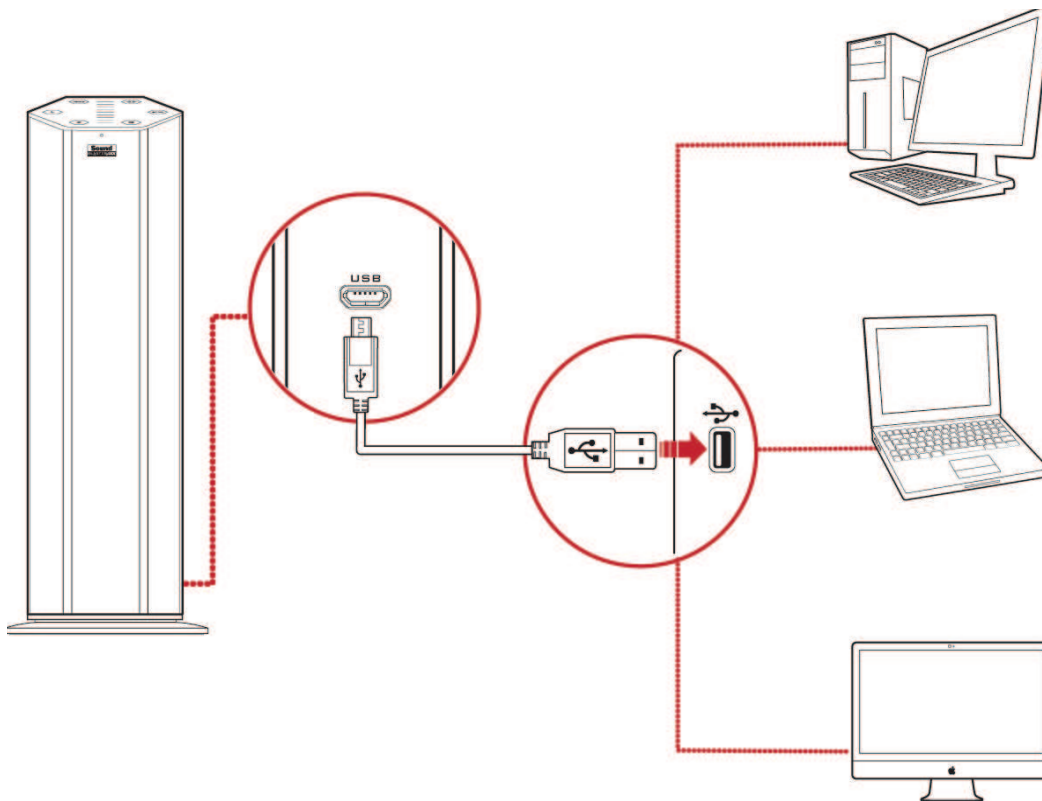


	Toggle/Slider	Description
1	Voice Focus	Toggles the Voice Focus function ON/OFF. Voice Focus is ON when the LED is lighted and dimmed otherwise.
2	Noise Reduction	Toggles the Noise Reduction function ON/OFF. Noise Reduction is ON when the LED is lighted and dimmed otherwise.
3	Master Volume	9 segment slider indicates the speaker volume. Slide upwards to increase the volume or slide downwards to decrease the volume.
4	SBX	Toggles SBX Pro Studio audio enhancements ON/OFF. The SBX Pro Studio is ON when the LED is lighted and dimmed otherwise.
5	Speaker Mute	Indicates whether the speaker is muted. A red LED indicates mute while a white LED indicates otherwise.
6	Microphone Mute	Indicates whether the inbuilt microphone is muted. A red LED indicates mute while a white LED indicates otherwise.
7	Call Button	Toggles the Call function ON/OFF. Call is ON when the LED is lighted and dimmed otherwise. Press to pick up call or to activate voice command. Note: LED blink for phone ringing when it is connected via <i>Bluetooth</i> .

Setting Up Your Sound BlasterAxx

The SBX 10 / SBX 20 is a new system with low power amplifier technology that enables the Sound BlasterAxx to run on USB power while delivering performance which was previously possible only with AC power. You can either connect the SBX 10 / SBX 20 to a computer via the USB or by connecting it to the power supply, i.e. standalone mode.

Connecting to a Computer

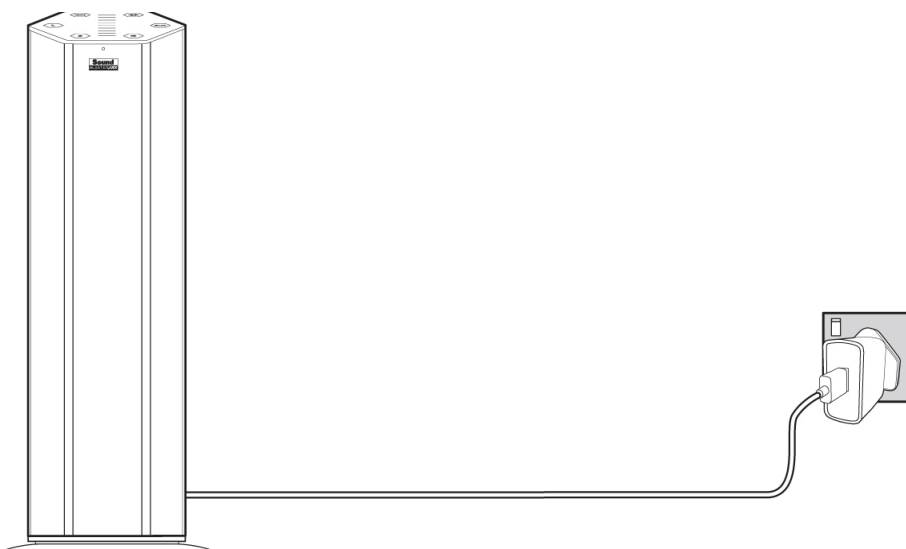


Setting the default audio device **(for Mac OS only)**

- (i) Go to System Preferences and click **Sound**.
- (ii) Click the Output tab, then select **Sound BlasterAxx SBX 10** or **Sound BlasterAxx SBX 20**.
- (iii) Click the Input tab, then select **Sound BlasterAxx SBX 10** or **Sound BlasterAxx SBX 20**.

OR

Connecting to a Power Supply



Note:

AC power adapter available separately.

Using Your Sound BlasterAxx

Whether you wish to listen to your favorite tracks from MP3 players, experience realistic audio while playing games on your PC and game consoles or receive clear voice and audio outputs during video / audio conferencing without the hassle of an additional microphone or headset, your SBX 10 / SBX 20 provides the ideal solution.

Various scenarios where the Sound BlasterAxx can be used include:

- Connecting the Sound BlasterAxx For Audio Entertainment
Connect your Sound BlasterAxx to your computer via USB or to other portable entertainment devices including MP3 players, mobile phones etc. via the AUX IN jack and enjoy clear audio quality. You may also connect the Sound BlasterAxx to various *Bluetooth* enabled devices via *Bluetooth* for group conferencing or music playback.
- Connecting the Sound BlasterAxx for Video / Audio Conferencing, Karaoke and Recording
The built-in microphone along with CrystalVoice technology provides a truly hands-free solution to video / audio conferencing via the web. The "What You Hear" application further allows you to mix the microphone input and the currently playing track or video with instant playback, creating a Karaoke-type system on your computer. You may even record your Voice over IP (VoIP) calls and internet telephony conversations.
- Connecting Headphones / Headsets
If required, headphones and headsets can be connected to the Sound BlasterAxx's headphone jack.

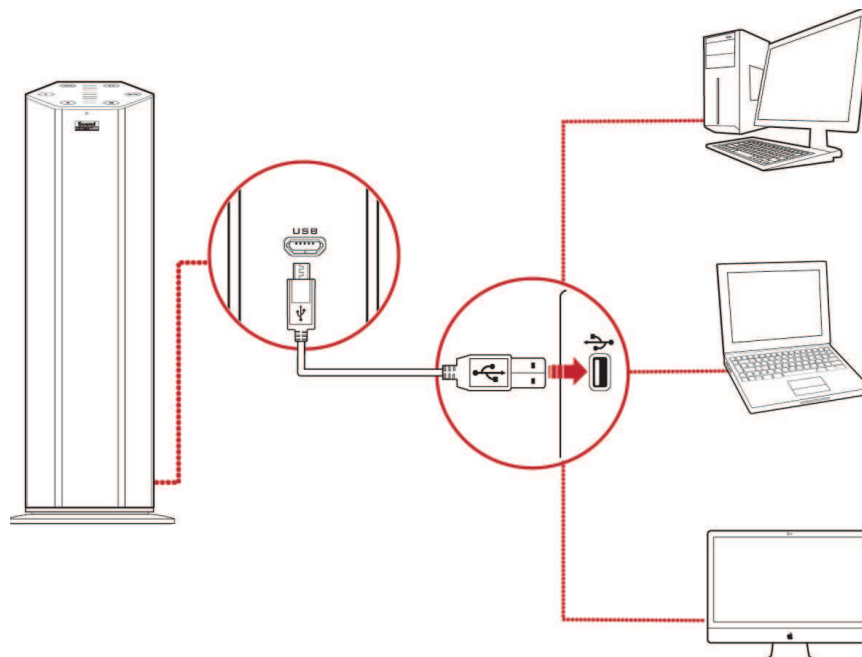
Connecting the Sound BlasterAxx For Audio Entertainment

The SBX 10 / SBX 20 is equipped with a MicroUSB jack, an Aux In jack, and a built-in *Bluetooth* transceiver for connection to a wide array of devices. This section illustrates the connection.

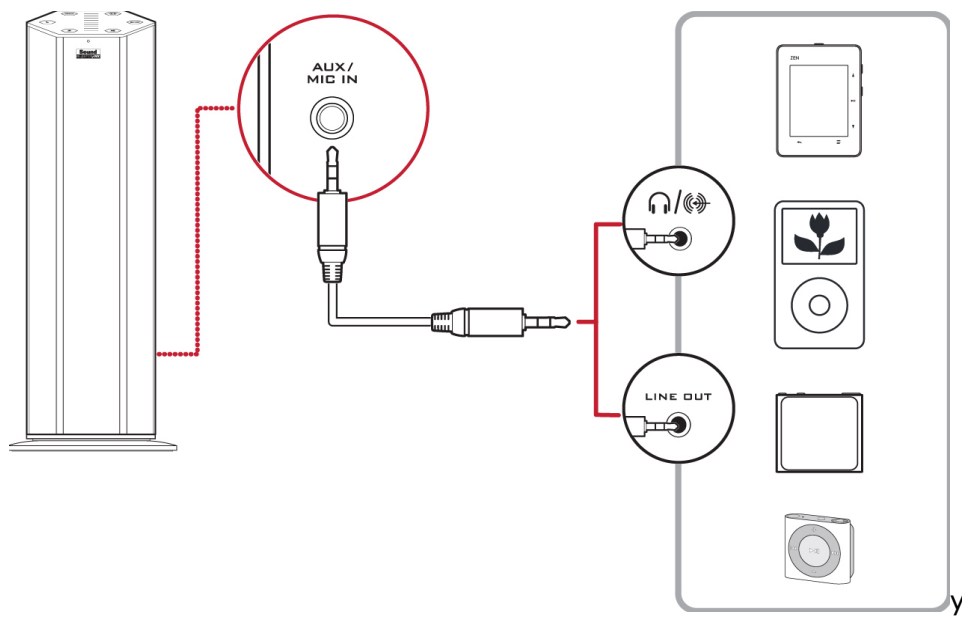
Note:

The SBX 10 / SBX 20 must either be connected to a computer, a wall socket using a power adapter (available separately) or an external USB battery pack (not included) for power.

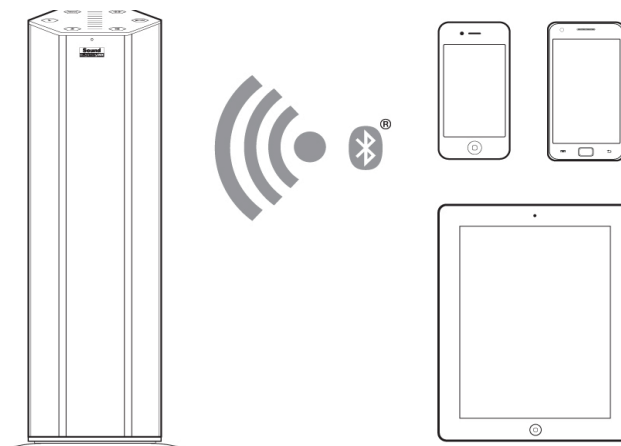
PC / Mac



MP3 Players / CD Players and Other Portable Entertainment Devices



Bluetooth Enabled Devices



Connecting the Sound BlasterAxx for Video/Audio Conferencing, Karaoke and Recording

Video / Audio conferencing via the various messaging applications available in the market is made simpler with the SBX 10 / SBX 20's built-in stereo microphones. Equipped with configurable CrystalVoice technology, the Sound BlasterAxx, coupled with its microphone, delivers crystal clear voice and audio reception during conferencing.

The Sound BlasterAxx is also equipped with a "What You Hear" feature, allowing you to turn your computer into a Karaoke station. Simply speak / sing into the Sound BlasterAxx to mix your voice input with music tracks, hearing the playback while recording.

You can also record voice conversations held over instant messaging tools such as Google Talk, Skype etc. using the "Wave/Aux/Mic Mix" feature installed via the Creative driver.

Note:

This feature is only available in the Windows environment.

To use this feature, simply follow the steps below:

1. Install the Creative Driver included in the software bundle for your product. Please refer to **Using the Software** for installation instructions.
2. From the **Start** menu, navigate to the Windows **Control Panel** and view **Sound** settings.
3. In the **Sound** dialog window, select the **Recording** tab. From the list of devices connected to your PC, right-click the **Wave/Aux/Mic Mix** device and select **Set as Default Device**.
4. Activate your IM voice conversation.
5. Launch a third-party sound recording tool of your choice and start recording the conversation.

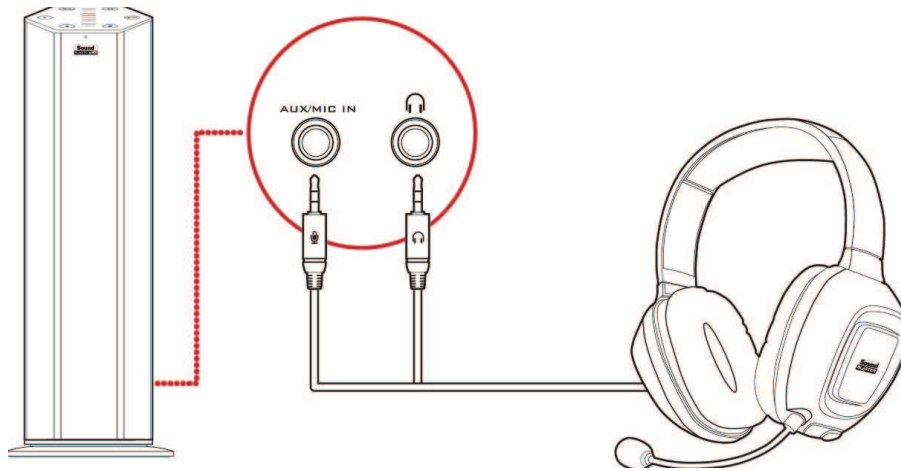


Note:

The SBX 20 can be placed behind a 13-inch or a smaller notebook.

Connecting Headphones / Headsets

Headphones and headsets can be connected to the Sound BlasterAxx via the Headphone jack. Please note that the Sound BlasterAxx's speaker will be automatically muted when a headphone is connected.



Using the Software

A specialized software for the Sound BlasterAxx is developed to provide additional enhancements to the audio and voice inputs and outputs of the product. The software bundle supports a range of operating systems including:

- Windows 8, Windows 7, Windows Vista
- Mac

To take full advantage of your Sound BlasterAxx, we recommend downloading and installing this software into your computer.

Note:

Some applications are available only for certain operating systems. To learn more about each application, please consult its respective Online Help.

Depending on your model and software version, the color theme of the user interface may differ.

Installation and Uninstallation - Windows

For **Windows OS**, the following applications are included in the software bundle:

- Sound BlasterAxx Control Panel
- Creative Software AutoUpdate
- Creative System Information
- Product Registration
- Creative ALchemy
- Host OpenAL
- Creative Driver

You can also download the following bonus applications from www.creative.com/support:

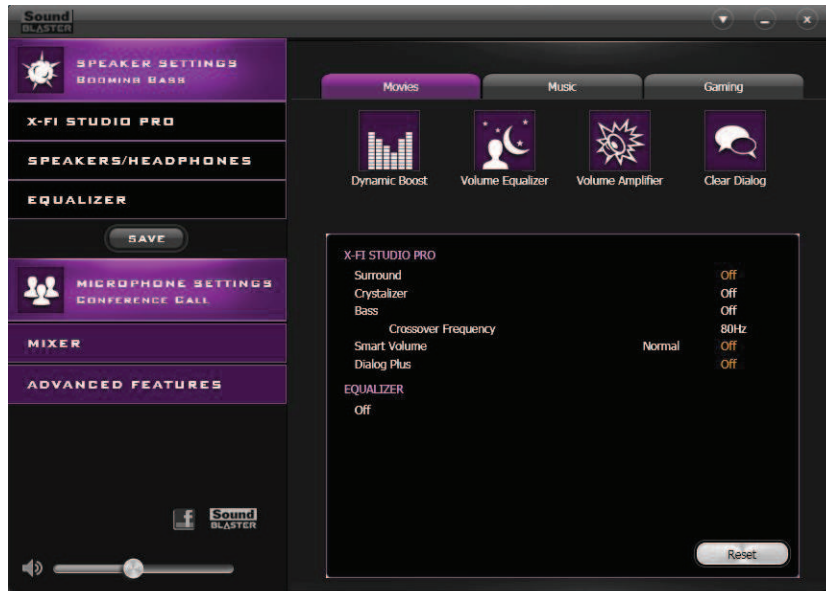
- Creative WaveStudio
- Creative Media Toolbox

Installing

Note:

Please ensure that your product is connected to the computer running the installation.

1. Using a standard web browser, visit www.creative.com/support and locate the software package for the Windows operating system.
2. Download this package into your local hard disk.
3. Locate and launch the software package.
4. Follow the on-screen instructions to complete the installation.
5. When prompted, restart your computer.
6. Launch the application by clicking **Start > Programs or All Programs > Creative > Sound BlasterAxx > Sound BlasterAxx Control Panel**



This software includes a number of configurations that help you control the basic functions of your Sound BlasterAxx plus several software enhancement configurations that can be made to heighten your Sound BlasterAxx's performance. The menu column on the left of the interface allows you to navigate to the configuration interface for each of these enhancements.

Uninstalling

In the event that an uninstallation is required (such as for upgrades), please follow the following procedure.

1. Click **Start > Control Panel > Uninstall a program**
2. Select the **Sound BlasterAxx** entry.
3. Click the **Uninstall** button.
If the **User Account Control** dialog box appears, click the **Continue** button.
4. Click the **Yes** button.
5. When prompted, restart your computer.

Installation and Uninstallation - Mac

For **Mac OS**, the following applications are included in the software bundle:

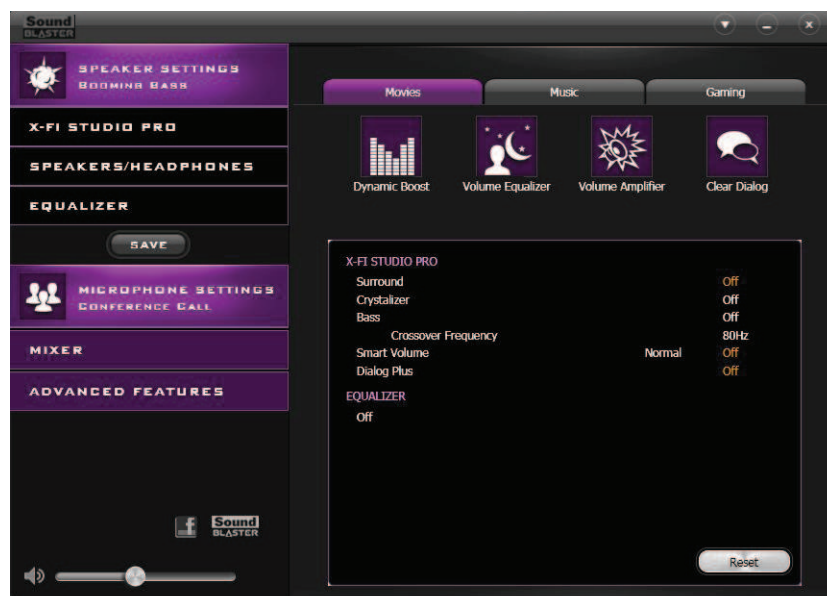
- Sound BlasterAxx Control Panel
- Product Registration
- Creative Uninstaller

Installing

Note:

Please ensure that your product is connected to the computer running the installation.

1. Using your web browser, visit www.creative.com/support and locate the software package for the Mac OS.
2. Download this package into your local hard disk.
3. Double-click the downloaded file to uncompress it.
4. Double-click the uncompressed DMG file.
5. Double-click the **Install** icon and follow the subsequent on-screen instructions to complete the installation.
6. Launch the **Sound BlasterAxx Control Panel** from the **Applications > Creative > Sound BlasterAxx** folder.



This software includes a number of configurations that help you control the basic functions of your Sound BlasterAxx plus several software enhancement configurations that can be made to heighten your Sound BlasterAxx's performance. The menu column on the left of the interface allows you to navigate to the configuration interface for each of these enhancements.

Uninstalling

In the event that an uninstallation is required (such as for upgrades), please follow the following procedure.

1. Click **Applications > Creative > Creative Uninstaller**
2. Select the Creative product to be uninstalled.
3. Click the **Uninstall** button.
4. Follow the on-screen instructions.

Using the Sound BlasterAxx Control Panel

The rest of this chapter explains how to use the Sound BlasterAxx Control Panel to view and adjust the various features of your Sound BlasterAxx product. The examples and screenshots below uses Windows as an example. The UI for other operating systems may differ slightly.

Managing Your Profiles

The Sound BlasterAxx Control Panel comes equipped with a set of pre-configured profiles to suit your different needs including gaming, movies/videos, music, etc. To activate a profile,

1. From the left menu, select "**Speaker Settings**" for pre-set audio profiles or "**Microphone Settings**" for voice profiles.
2. Select the profile you wish to use.



Modifying Profile Settings

You can also modify the pre-configured settings of each profile.

1. Select a profile to apply it to your SBX 10 / SBX 20.
2. Select "**Speaker Settings > SBX Pro Studio**" and / or "**Speaker Settings > Equalizer**" to edit the configuration of the currently selected speaker profile.
3. Select "**Microphone Settings > CrystalVoice**" to edit the currently selected microphone profile.
4. Return to the profile interface. All changes made in steps 2 and 3 will be reflected here.
5. Click [**Save**] to save your changes or click [**Reset**] to return the profile to its pre-configured settings.

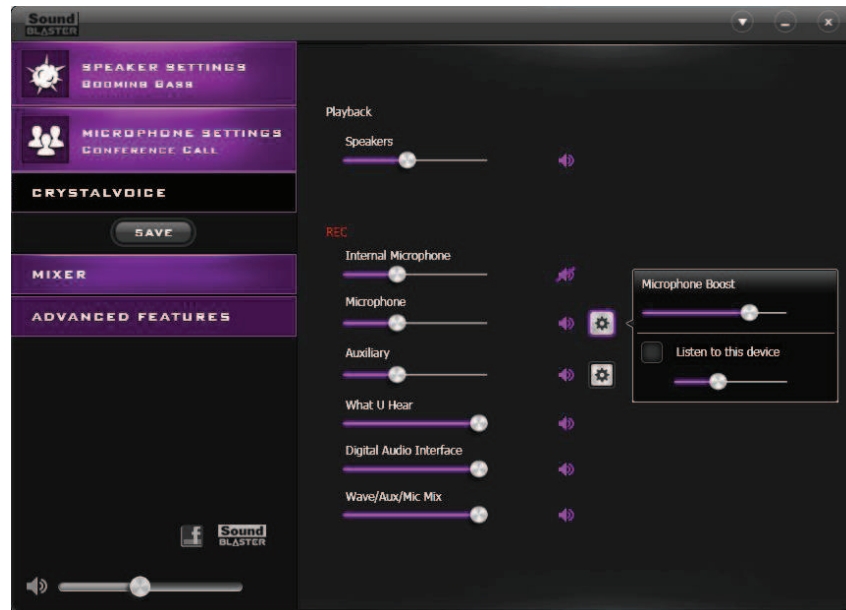
Adjusting Speaker Volume Via Software

A master volume slider is available at the bottom left corner of the interface. Drag the slider to adjust the master volume. You can also mute / unmute the speaker by clicking the speaker icon to the left of the slider.



Mixer Settings

A mixer is also available via the software, allowing you to adjust the volume levels of individual outputs and channels including the microphone, speakers, etc. Simply click the "**Mixer**" option on the menu and adjust the volumes using the sliders.



Enhancing the Audio - SBX Pro Studio

SBX Pro Studio enhances the audio output of your Sound BlasterAxx using software optimizations. To configure SBX Pro Studio, click the "**SBX Pro Studio**" menu option on the left.



Follow the steps below to toggle on SBX Pro Studio and adjust the level of enhancements.

1. Click the power button to toggle ON SBX Pro Studio.
2. Select the type(s) of enhancements to apply and drag the sliders to adjust the level for each enhancement.
3. Click the play button to test the audio output, if necessary.

Note:

You can also toggle SBX Pro Studio ON via the physical touchscreen of the Sound BlasterAxx. Enhancement adjustments can only be made via the software.

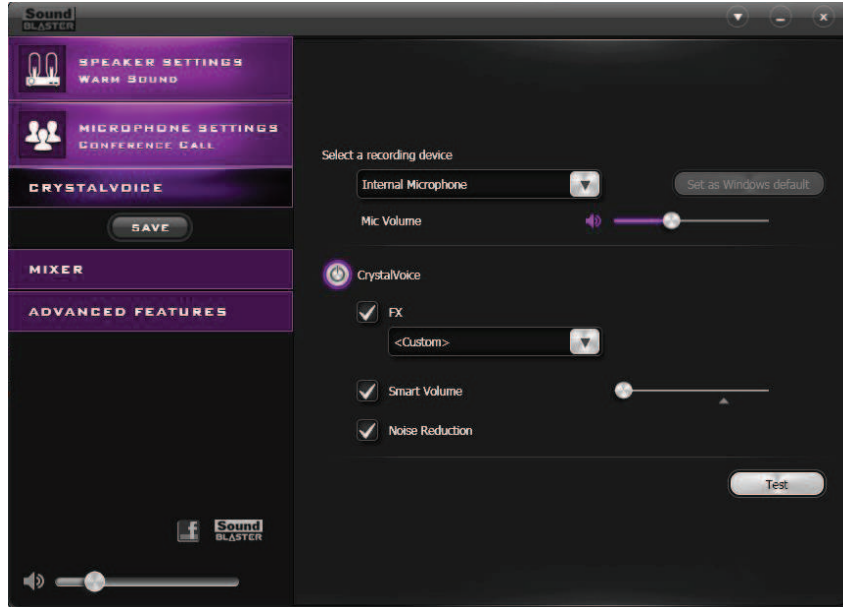
SBX Pro Studio includes a number of enhancements for movies and gaming, elevating your movie and gaming experience to the next level. These include:

- **SBX Pro Studio Surround** - provides immersion control to enhance the natural sense of audio depth and spaciousness by creating virtual surround sound channels. Stereo content or multichannel content will sound as if its coming from all sides while voices remain centered in front and original balance and timbre is preserved.
- **SBX Pro Studio Crystalizer** - restores the natural dynamic range that is lost when music files (iTunes and MP3) gets compressed. This makes the music sound as good as the artist originally intended, and adds an enhanced level of realism for movies and games.
- **SBX Pro Studio Bass** - fills in the missing low frequency tones and gives the extra impact for a better entertainment experience. Consumers no longer have to tolerate a lack of bass in Sound BlasterAxx as the SBX Pro Studio Bass technology dramatically improves the sound experience even in the absence of a subwoofer.
- **SBX Pro Studio Smart Volume** - addresses the problem of abrupt volume level changes during playback and between songs by continuously measuring volume automatically, applying gain and attenuation intelligently to compensate for any changes.
- **SBX Pro Studio Dialog Plus** - enhances the voices in movies for clearer dialog, allowing the listener to hear the dialog over the rest of the soundtrack and over ambient noise in the listening environment.

Enhancing the Microphone - CrystalVoice

The SBX 10 / SBX 20 is equipped with built-in stereo microphones, allowing you to easily carry out video/audio conferencing using popular VoIP applications such as Ventrilo® etc. CrystalVoice enhancements help to further this experience by enhancing the clarity of such communications.

To configure CrystalVoice settings, Click the "**CrystalVoice**" menu option on the left.



1. Click the power button to turn on CrystalVoice.
2. Select the SBX 10 / SBX 20 as your recording device, adjusting the microphone volume using the slider.
3. Select the desired enhancements to turn on and adjust the settings according to your needs.
4. Click [**Test**] and speak into your Sound BlasterAxx to hear your voice recorded based on the configured settings. Readjust if necessary.

CrystalVoice enhancements helps you hear and be heard clearly by all participants of the conference, doing away with noisy background distortions and unclear communication that disrupts your online gaming and chatting experience. The various enhancements available include:

CrystalVoice Acoustic Echo Cancellation - eliminates echoes and enables the Sound BlasterAxx to listen to the other parties clearly. Echoes are a common problem present in voice communication systems that disrupts conversations by making it difficult to hear the other party.

CrystalVoice Noise Reduction - enables the Sound BlasterAxx to be heard clearly over background noise by constantly monitoring the environment and eliminating unwanted noise that interferes with the conversation.

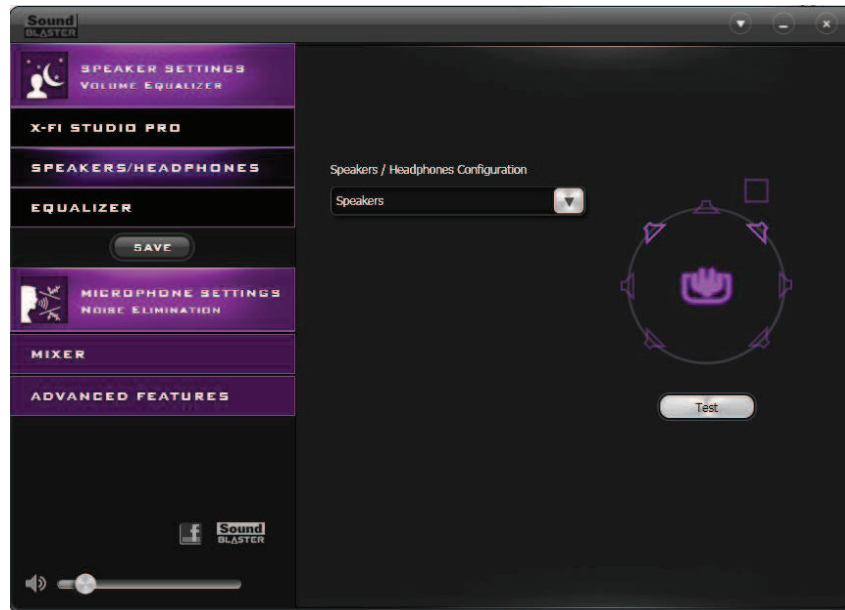
CrystalVoice Smart Volume - automatically adjusts the loudness of a voice to maintain a consistent volume level. This makes it convenient for the Sound BlasterAxx to converse normally, regardless of his distance from the microphone.

CrystalVoice FX™ - enables the alteration of voice with a variety of effects which can be used to enhance the tone of a voice, create interesting accents or even allow someone to sound like a completely different person.

CrystalVoice Focus - creates a zone and suppresses noise outside it to enable the Sound BlasterAxx within to be heard with amazing clarity. Multiple microphones are used to focus, enhance the Sound BlasterAxx's voice, and eliminate sounds outside the zone.

View Speakers / Headphones Settings

Each SBX 10 / SBX 20 is equipped with a headphone jack, allowing you to connect your favorite headphones to the Sound BlasterAxx for audio output. Connecting headphones to the Sound BlasterAxx automatically mutes the speaker. From the software, you can check whether audio is played via speakers or headphones.



1. View the current settings for the speakers / headphones.
2. Click **[Test]** to hear a sample audio clip played back based on the settings.

Understanding Other Advanced Features

The software also provides other advanced features including:

- Equalizer Settings
- Optimize USB Power for better speaker performance
- *Bluetooth* Auto Connect

Equalizer Settings

Equalizers allows you to filter various audio frequency, thus controlling the tone of your audio output. The Sound BlasterAxx Control Panel comes equipped with a range of preset equalizer settings, helping you to select different audio tones easily. You can also manually modify or add equalizer presets.



To view the Equalizer Settings interface, select "**Equalizer**" from the menu. To apply and adjust an equalizer preset,

1. Check the **EQ** checkbox to enable the use of the equalizer.
2. From the drop down menu, select the preset to use.
3. Adjust the vertical slider bars to achieve your desired level.
4. Click [**Save**] to save the changes to the preset if necessary.

You can also delete any user created equalizer presets by selecting the preset from the drop down menu and clicking [**Delete**].

Note:

All default equalizer presets cannot be deleted.

Optimize USB Power for better speaker performance

The Optimize USB Power feature is used to increase the performance of your speaker on Sound BlasterAxx. Please note that the Sound BlasterAxx will consume more power when this feature is enabled.

To enable the Optimize USB Power feature, select the **Optimize USB power for better speaker performance** checkbox.

Note:

This feature is only available on SBX 20.

***Bluetooth* Auto Connect**

The *Bluetooth* Auto Connect feature allows a paired *Bluetooth* device to be connected to the Sound BlasterAxx automatically. When the feature is enabled, the Sound BlasterAxx detects and reconnects to the previously paired *Bluetooth* device when it is turned on.

To enable *Bluetooth* Auto Connect, select the ***Bluetooth* Auto Connect** checkbox.

Using the *Bluetooth*[®] Wireless Feature

You can stream music from your *Bluetooth* enabled devices to your SBX 10 / SBX 20.

Enjoy audio from your *Bluetooth* enabled devices

Enjoy your favorite music from your *Bluetooth* devices; simply follow these steps to connect them.

Action	LED Status	Status
Connect the Sound BlasterAxx SBX 10 / SBX 20 to a computer or a power supply	SBX 10 / SBX 20 LED button and Touchpad are lit	SBX 10 / SBX 20 is powered ON once plugged in
Press and hold CONNECT button for 4 seconds	SBX 10 / SBX 20 <i>Bluetooth</i> LED blinks rapidly and changes from white to blue	Pairing mode. Ready to be paired with new device
Turn ON the <i>Bluetooth</i> feature on your device. Search and select "Sound BlasterAxx SBX 10" or "Sound BlasterAxx SBX 20". If password is required, enter 0000 and connect to it	SBX 10 / SBX 20 <i>Bluetooth</i> LED lit	Ready to stream music

Note:

The SBX 10 / SBX 20 will exit from pairing mode if no device is paired within 1 minute.

To disconnect and remove all *Bluetooth* pairings, press and hold the CONNECT button for 10 seconds.

Reconnect your Sound BlasterAxx to the PC by setting it as the default audio device:

For Windows,

- i. Go to **Control Panel** and click **Sound**.
- ii. Click the **Playback** tab, select **Sound BlasterAxx SBX 10** or **Sound BlasterAxx SBX 20**, then click the **Set Default** button.
- iii. Click the **Recording** tab, select **Sound BlasterAxx SBX 10** or **Sound BlasterAxx SBX 20**, then click the **Set Default** button.

For Mac,

- i. Go to **System Preferences** and click **Sound**.
- ii. Click the **Output** tab, then select **Sound BlasterAxx SBX 10** or **Sound BlasterAxx SBX 20**.
- iii. Click the **Input** tab, then select **Sound BlasterAxx SBX 10** or **Sound BlasterAxx SBX 20**.

General Specifications

Capacitive Touchscreen User Interface

- Master Volume Slider with LED Backlit
- Voice Focus On / Off button with LED Backlit
- Noise Reduction On / Off button with LED Backlit
- SBX Pro Studio Master On / Off button with LED Backlit
- Speaker Mute button with LED Backlit
- Mic Mute with button LED Backlit
- "Call" button with LED Backlit
- White LED for Power indication. Blue LED for *Bluetooth* indication.
- *Bluetooth* Connect button

Inputs

- USB 2.0, *Bluetooth* Wireless
- One 3.50 mm (1/8-inch) stereo jack for Aux In or Microphone In
- Built-in Microphone: High quality dual microphone array

Outputs

- Amplified speaker
- One 3.50 mm (1/8-inch) stereo jack for Headphones Playback

Physical Specifications

- Dimensions (L x W x H) :
 - SBX 10: 90.6 x 80.3 x 295.7 mm
 - SBX 20: 109.8 x 97 x 400.2 mm
- Weight:
 - SBX 10: Approx. 0.8 kg
 - SBX 20: Approx. 1.9 kg

Technical Specifications

Bluetooth Version: *Bluetooth* 2.1 + EDR (Enhanced Data Rate)

Bluetooth Profiles:

- A2DP (*Wireless Stereo Bluetooth*)
- AVRCP (*Bluetooth* Remote Control)
- HFP (*Hands-Free Profile*)

Audio Codec: AAC, SBC

Operating Frequency: 2402 - 2480 MHz

Operating Range: Up to 10 meters / 33 feet

(Measured in open space. Walls and structures may affect range of device.)

Device Operating Temperature range: 0°C to 45°C

Troubleshooting and Support

This chapter provides solutions to issues that may be encountered during the installation or usage of your Sound BlasterAxx.

1. The Sound BlasterAxx SBX 10 / SBX 20 does not power on.

The Sound BlasterAxx is designed to be powered on by connecting to a PC / laptop via USB or through a physical power socket using a power adapter.

If you are connected via USB, please ensure that the connected computer has recognized your Sound BlasterAxx correctly. If not, please follow the steps below in order until the issue is corrected.

- i. Tighten the USB connection at both ends of the cable.
- ii. The USB cable may be faulty. Replace the cable with a working USB cable.
- iii. Your computer's USB port may be disabled, or faulty or requires a driver update. Check your computer's hardware device manager to determine the working status of your USB port. Enable your USB port and / or update its driver.

If the problem persists, connect the Sound BlasterAxx to a different USB port.

If you are connected via a power adapter, please check that all cables are tightly connected and the power socket is turned on.

2. I am having difficulty in linking up the *Bluetooth* device with SBX 10 / SBX 20.

Ensure that your *Bluetooth* enabled device supports A2DP profile.

Please also try the following steps:

- Make sure that *Bluetooth* is enabled (turned on) on your device.
- On some devices, ensure that the Sound BlasterAxx SBX 10 / SBX 20 is selected as the default headset / wireless stereo audio playback device.
- Make sure that there are no other wireless devices within a 10 meter radius when pairing.
- Position them within 1 meter or closer to each other if you experience pairing difficulties.
- Check if you have input the correct passcode / pin number (0000) on your *Bluetooth* device.
- Ensure that both, your *Bluetooth* device and SBX 10 / SBX 20 are not connected to any other devices.
- Pair the devices again.
- Should the problem persist, reset the SBX 10 / SBX 20 to factory default.

3. *Bluetooth* link is established and paired between the devices but there's no music.

Ensure that the device's volume is not set to minimum or muted. With some built-in *Bluetooth* enabled computers or 3rd party USB *Bluetooth* dongles, you may be required to manually specify / set-up the audio output as the Sound BlasterAxx SBX 10 / SBX 20 (under sound and audio devices section) on your computer's operating system.

Note:

Audio transmitted from your Sound BlasterAxx may be slightly delayed; this is due to the characteristics of Bluetooth technology.

4. No sound from headphones.

Please check the following:

- Headphones are securely connected to the headphone jack.
- **Headphones** it recognized as the output device in the **Speakers / Headphones** interface on the Control Panel.

5. There is no audio output from the SBX 10 / SBX 20.

Please check the following:

- Headphones are not connected to the Sound BlasterAxx. Connecting headphones automatically mutes the speaker.
- Check the volume level of the Sound BlasterAxx for the following:
 - Volume mute LED on the touchscreen is not lighted.
 - Master volume slider on the touchscreen is not at 0 bars.
 - Master volume and mute icon on the software is at the appropriate level.
 - The appropriate channel(s) and output types on the **Mixer** settings interface is not 0.


6. Unable to record using the built-in microphone.

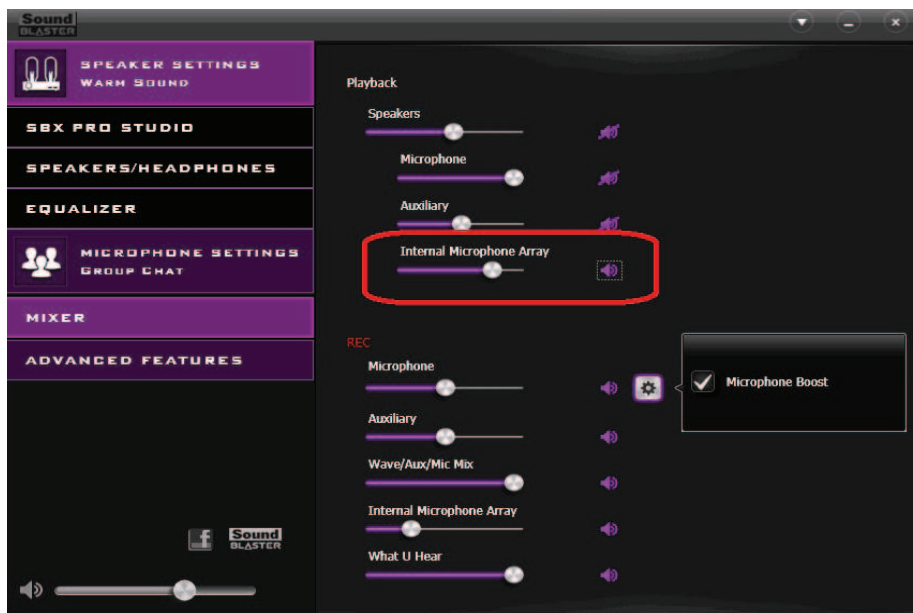
Please check the following:

- The microphone is not disabled or muted. That is, the microphone mute LED on the touchscreen is not lit.
- Microphone volume and the volume of other recording devices on the **Mixer** settings interface is not at 0.
- For Windows systems, navigate to **Control Panel > Sound > Recording** tab. Right-click on the recording endpoint to view its Properties. Ensure that the **Listen to this device** option is disabled.

7. Unable to hear instant playback from microphone input.

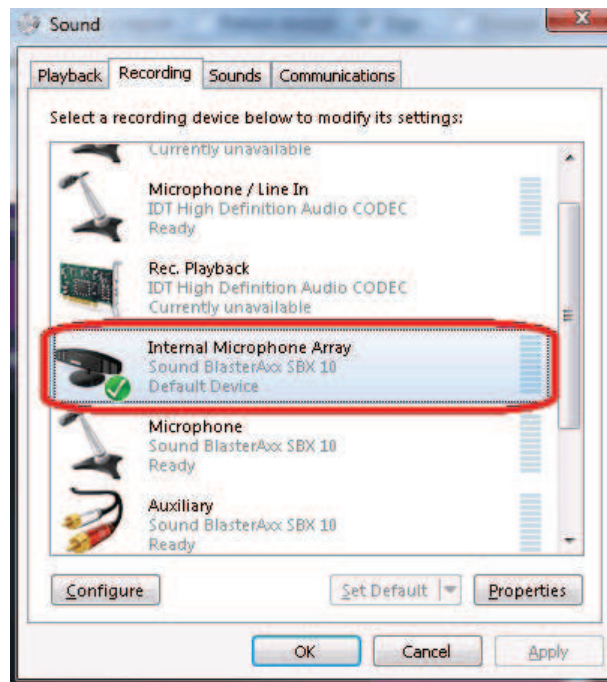
The SBX 10 / SBX 20 is equipped with "What Your Hear" and "Wave/Aux/Mic Mix" features that allows you to record whatever you say into your microphone and hear it played back instantly. To ensure that the this feature works however, first ensure that the correct microphone input is unmuted by following the steps below.

- Launch the **Sound BlasterAxx Control Panel** and select **Mixer**.
- Check to ensure that your microphone is not muted. For example, if you are using the built-in microphone, click the button  next to the **Internal Microphone Array** to unmute it. If you are using an external microphone, such as a headset, please ensure that you unmute the **Microphone** option instead.



Then, check that the correct microphone is selected as the system sound input device. For Windows systems,

- i. Navigate to **Control Panel > Sound > Recording** tab.
- ii. In **Recording** tab, ensure that the correct microphone is selected. For example, if you are using the built-in microphone, the **Internal Microphone Array** should be selected. If you are using an external microphone, the **Microphone** should be selected instead.



For Mac systems,

- i. Go to **System Preferences** and click **Sound**.
- ii. Click the **Input** tab and ensure that the correct microphone is selected as the input device.

Additional Support

If you encounter any other issues or have any other enquiries about your SBX 10 / SBX 20 or any other Creative products, please visit our comprehensive knowledge base at support.creative.com or www.soundblaster.com for additional information.

Safety and Regulatory Information

Regulatory Information

The following sections contains notices for various countries.

Caution:

This product is intended for use with FCC/CE certified computer equipment. Please check the equipment operating/installation manual and/or the equipment manufacturer to verify/confirm if your equipment is suitable prior to the installation or use of the product.

Notice for the USA

Federal Communication Commission (FCC) Interference Statement

FCC PART 15: This equipment has been tested and found to comply with the limits for a Class B digital device, pursuant to Part 15 of the FCC Rules. These limits are designed to provide reasonable protection against harmful interference in a residential installation. This equipment generates, uses and can radiate radio frequency energy and, if not installed and used in accordance with the instructions, may cause harmful interference to radio communications. However, there is no guarantee that interference will not occur in a particular installation. If this equipment does cause harmful interference to radio or television reception, which can be determined by turning the equipment off and on, the user is encouraged to try to correct the interference by one or more of the following measures:

- Reorient or relocate the receiving antenna.
- Increase the separation between the equipment and receiver.
- Connect the equipment into an outlet on a circuit different from that to which the receiver is connected.
- Consult the dealer or an experienced radio/TV technician for help.

This device complies with part 15 of the FCC Rules. Operation is subject to the following two conditions:

1. This device may not cause harmful interference, and
2. This device must accept any interference received, including interference that may cause undesired operation.

Caution:

To comply with the limits of the Class B digital device, pursuant to Part 15 of the FCC Rules, this device must be installed with computer equipment certified to comply with Class B limits.

All cables used to connect to the computer and peripherals must be shielded and grounded. Operation with non-certified computers or non-shielded cables may result in interference to radio or television reception.

MODIFICATION: Any changes or modifications not expressly approved by the grantee of this device could void the user's authority to operate the device.

California Proposition 65 Statement

Warning:

Handling this product may expose you to chemicals known to the State of California to cause cancer and birth defects or other reproductive harm. **Wash hands after handling.**

EXPLANATORY NOTE: California Safe Drinking Water and Toxic Enforcement Act of 1986 (Proposition 65) requires special product labeling for products containing certain chemicals known to the State of California to cause cancer, birth defects or other reproductive harm. Creative has chosen to provide a warning based on its knowledge about the presence of one or more listed chemicals without attempting to evaluate the level of exposure. With Creative's products, the exposure may be below the Proposition 65 level of concern, or could even be zero. However, out of an abundance of caution, Creative has elected to place the Proposition 65 warning on its products.

Notice for Canada

This Class B digital apparatus complies with Canadian ICES-003 and RSS-210.

Cet appareil numérique de classe B est conforme aux normes canadiennes NMB-003 et CNR-210.

This device complies with Industry Canada licence-exempt RSS standard.

Operation is subject to the following two conditions:

1. This device may not cause harmful interference, and
2. this device must accept any interference received, including interference that may cause undesirable operation.

Cet appareil est conforme avec Industrie Canada RSS standard exempts de licence.

Son fonctionnement est soumis aux deux conditions suivantes :

1. Le matériel ne peut être source D'interférences et
2. Doit accepter toutes les interférences reçues, Y compris celles pouvant provoquer un fonctionnement indésirable.

CANADIAN CLASS B STATEMENT: This digital device does not exceed the Class B limits for radio noise emissions from digital apparatus as set out in the interference-causing equipment standard entitled "Digital Apparatus," ICES-003 of the Department of Communications.

Cet appareil numérique respecte les limites de bruits radioélectriques applicables aux appareils numériques de Classe B prescrites dans la norme sur le matériel brouilleur: "Appareils Numériques," NMB-003 édictée par le ministre des Communications.

MODIFICATION: Any changes or modifications not expressly approved by the grantee of this device could void the user's authority to operate the device.

Toute modification non approuvée explicitement par le fournisseur de licence de l'appareil peut entraîner l'annulation du droit de l'utilisateur à utiliser l'appareil.

Notice for Australia / New Zealand



Complies with the requirements of the ACMA Radiocommunications (Electromagnetic Compatibility) Standard 2008.

European Compliance

This product conforms to the following:

RoHS Directive 2011/65/EU.

EMC Directive 2004/108/EC.

Mains operated products for the European market comply with Low Voltage Directive 2006/95/EC and Commission Regulation(s) Implementing Directive 2009/125/EC.

Communication / RF wireless products for the European market comply with R&TTE Directive 1999/5/EC.

Caution:

To comply with the Europe CE requirement, this device must be installed with CE certified computer equipment which meet with Class B limits.

All cables used to connect this device must be shielded, grounded and no longer than 3m in length. Operation with non-certified computers or incorrect cables may result in interference to other devices or undesired effects to the product.

MODIFICATION: Any changes or modifications not expressly approved by Creative Technology Limited or one of its affiliated companies could void the user's warranty and guarantee rights.

Notice for Singapore



Notice for Korea

B급 기기

(가정용 방송 통신기자재)

이 기기는 가정용 (B급) 전자파 적합 기기로서 주로 가정에서 사용하는 것을 목적으로 하며, 모든 지역에서 사용할 수 있습니다.

Vietnam RoHS Statement

This product is in compliance with Circular 30/2011/TTBCT of the Ministry of Trade of the Socialist Republic of Vietnam ("Circular"), it does not contain the following substances in concentration greater than the Maximum Limit value as specified in the Circular.

Substance	Maximum Limit (ppm) ^{1, 2}
• lead	1000
• mercury	1000
• cadmium	100
• hexavalent chromium	1000
• polybrominated biphenyls (PBB)	1000
• polybrominated diphenyl ethers (PBDE)	1000

¹ Maximum Limit does not apply to applications exempted from the Circular.

² Maximum Limit refers to concentration by weight in homogeneous materials.

Ukraine RoHS Statement

Обладнання відповідає вимогам Технічного регламенту щодо обмеження використання деяких небезпечних речовин в електричному та електронному обладнанні, затвердженого постановою Кабінету Міністрів України від 3 грудня 2008 № 1057

Safety Information

Refer to the following information to use your product safely, and to reduce the chance of electric shock, short-circuiting, damage, fire, hearing impairment or other hazards. Improper handling may void the warranty for your product. For more information, read the warranty available with your product.

- Do not dismantle or attempt to repair your product.
Refer all servicing to authorized repair agents.
- Do not expose your product to temperatures outside the range of 0°C to 45°C (32°F to 113°F).
- Do not pierce, crush or set fire to your product.
- Keep your product away from strong magnetic objects.
- Do not subject your product to excessive force or impact.
- Do not expose your product to water or moisture.
If your product is moisture-resistant, take care not to immerse your product in water or expose it to rain.

Bluetooth Product

- The short wave radio frequency signals of a *Bluetooth* device may impair the operation of other electronic and medical devices.
- Switch off the device where it is prohibited. Do not use the device in medical facilities, aircraft, refueling points, close to automatic doors, automatic fire alarms or other automatically controlled devices.
- Keep this device at least 20 cm from pacemakers and other medical devices. Radio waves may impair the operation of pacemakers and other medical devices.

License and Copyright

Information in this document is subject to change without notice and does not represent a commitment on the part of Creative Technology Ltd. No part of this manual may be reproduced or transmitted in any form or by any means, electronic or mechanical, including photocopying and recording, for any purpose without the written permission of Creative Technology Ltd.

Copyright © 2012 Creative Technology Ltd. All rights reserved. Creative, the Creative logo, Sound BlasterAxx, the Sound BlasterAxx logo, SBX Pro Studio, the SBX Pro Studio logo, Recon3D and CrystalVoice are trademarks or registered trademarks of Creative Technology Ltd. in the United States and/or other countries. The *Bluetooth*[®] word mark and logos are registered trademarks owned by Bluetooth SIG, Inc. and any use of such marks by Creative Technology Ltd is under license. Other trademarks and trade names are those of their respective owners. All specifications are subject to change without prior notice. Use of this product is subject to a limited hardware warranty. Actual contents may differ slightly from those pictured. The software included in this packaging may not be used separately from the hardware. Before using the software, you must agree to be bound by the terms and conditions of the end user license agreement.

Version 1.0

May 2012