

# Getting Started

---

Thank you for choosing Creative Sound BlasterAxx, the next generation Sound Blaster® that incorporates the powerful SB-Axx1 sound and voice processor. It is equipped with speaker and microphone functions for both listening and conferencing capabilities. The SBX 200 (SB1530) model design provides portability and low power consumption without compromising your audio pleasure.

The SBX 200 comprises both right and left drivers within a single tower structure. This system is equipped with the following features:

- Portable form makes it ideal for travel, outdoor and automobile usages
- High quality audio
- Seamless support for various operating systems including Windows® 8, Windows 7, Windows Vista® and Mac® OS
- Specialized software for different speaker enhancements and configurations
- SBX Pro Studio audio enhancements
- Built-in stereo microphones with CrystalVoice technology
- Built-in *Bluetooth*® Transceiver
- Near field communication (NFC)
- Built-in rechargeable battery
- MP3 playback and voice recording functions

## Package Checklist

Your Sound BlasterAxx SBX 200 package comes with the following components

- The Sound BlasterAxx SBX 200 tower
- 1.0m MicroUSB cable
- 5V 2.1A USB Power Adapter with interchangeable plugs
- Travel carry case

## System Requirements

- Intel Core™2 Duo processor 2.2 GHz, AMD Athlon 64x2 Dual Core or equivalent processor
- Microsoft® Windows 8 64-bit, Windows 8 32-bit, OR  
Microsoft Windows 7 64-bit, Windows 7 32-bit, OR  
Microsoft Windows Vista 64-bit, Windows Vista 32-bit, OR  
Macintosh OS 10.5 and above
- Powered USB 2.0 port

## Registering Your Product

Registering your product ensures you receive the most appropriate service and product support available. You can register your product during installation or at [www.creative.com/register](http://www.creative.com/register). Please note that your warranty rights are not dependent on registration.

## More Help

For the latest news and products for the Sound Blaster, please visit [www.soundblaster.com](http://www.soundblaster.com). The site also includes information on making purchases, technical help and the latest software updates.

### Using Creative Software AutoUpdate

Locating, downloading and installing updates for your Creative products is now simpler and faster with the web-based Creative Software AutoUpdate system.

When you connect to Creative Software AutoUpdate via the Internet, the website will analyze your computer system to determine your operating system, language and which Creative products are connected to your system.

When this analysis is completed, you will then be given a list of only the most relevant software updates for your connected products. The files can then be retrieved and installed.

To learn more about the Creative Software AutoUpdate, please visit [www.soundblaster.com/support](http://www.soundblaster.com/support).

#### Note:

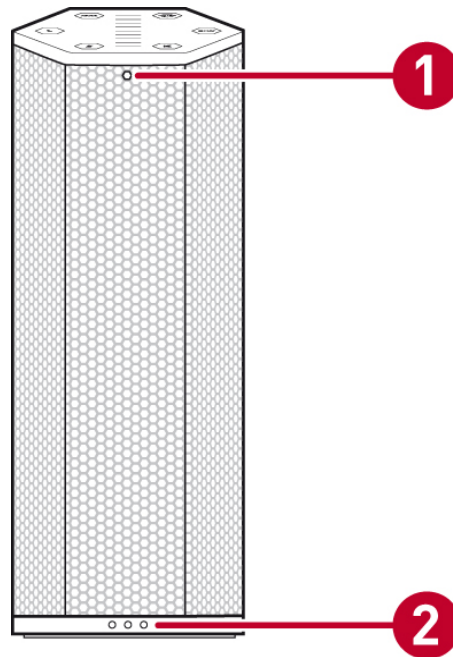
*First-time users of Creative Software AutoUpdate may be prompted to authorize the download of a browser component required for system analysis. Check to ensure that this content is signed by Creative Labs, Inc., then click the **Yes** button.*

*Please ensure that all your Creative products are connected and installed on the same computer running Creative Software AutoUpdate.*

# Understanding Your Sound BlasterAxx

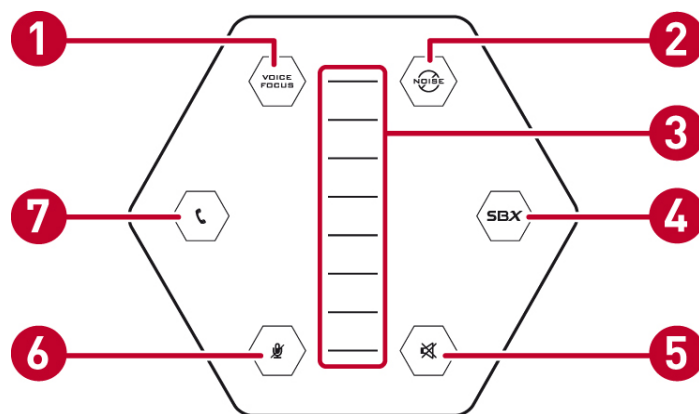
The SBX 200 is equipped with a variety of input and output jacks to enable connection to various devices. A touchscreen interface located at the top of the Sound BlasterAxx gives you basic control over the system's functions. This chapter looks at these features in detail.

## The Sound BlasterAxx Tower



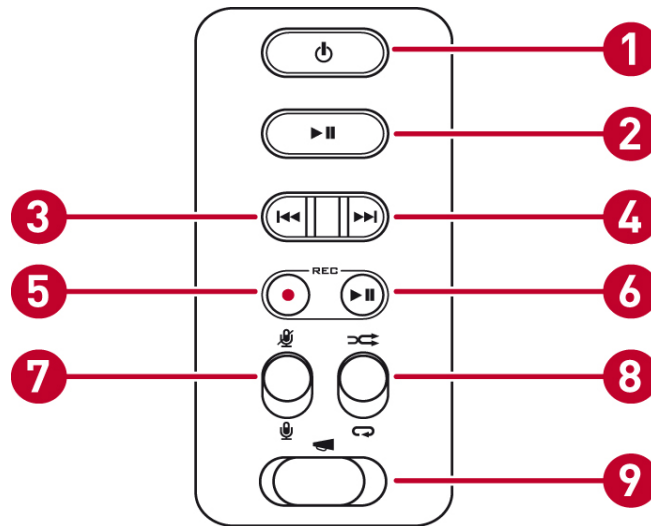
	Indicator	Description
1	<i>Bluetooth</i> Indicator	The blue LED indicates that the Sound BlasterAxx is connected with a <i>Bluetooth</i> / NFC enabled device.
2	Power / Battery Indicator	The three white LEDs at the bottom shows the power status (ON or OFF) of the Sound BlasterAxx and its battery level.

## TouchScreen Controls



	Button / Slider	Description
1	Voice Focus	Toggles the Voice Focus function ON/OFF. Voice Focus is ON when the LED is lighted and dimmed otherwise.
2	Noise Reduction	Toggles the Noise Reduction function ON/OFF. Noise Reduction is ON when the LED is lighted and dimmed otherwise.
3	Master Volume	8 segment slider indicates the speaker volume. Slide upwards to increase the volume or slide downwards to decrease the volume.
4	SBX	Toggles SBX Pro Studio audio enhancements ON/OFF. The SBX Pro Studio is ON when the LED is lighted and dimmed otherwise.
5	Speaker Mute	Indicates whether the speaker is muted. A red LED indicates mute while a white LED indicates otherwise.
6	Microphone Mute	Indicates whether the inbuilt microphone is muted. A red LED indicates mute while a white LED indicates otherwise.
7	Call Button	Toggles the Call function ON/OFF. Call is ON when the LED is lighted and dimmed otherwise. Press to pick up call or to activate voice command. <b>Note:</b> LED blinks for phone ringing when it is connected via <i>Bluetooth</i> .

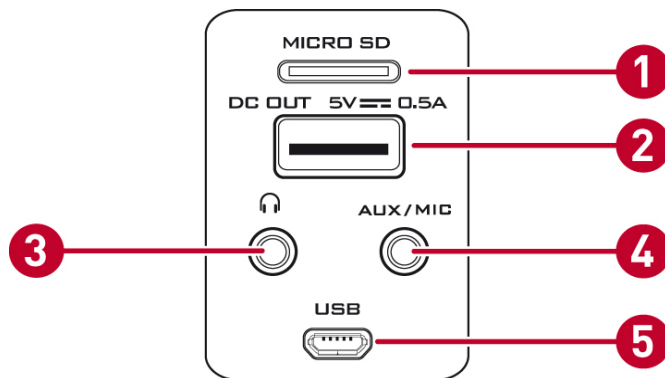
## MP3 Playback / Voice Recording



	Button / Switch	Description
1	Power / Bluetooth Connect Button	When the SBX 200 is turned OFF, press the Power button once to power it ON; When the SBX 200 is turned ON, <ul style="list-style-type: none"> <li>Press and hold the button for <b>2 seconds</b> to turn on the <i>Bluetooth</i> feature. You may choose to pair the device using <i>Bluetooth</i> or NFC. Refer to <b>Using the Bluetooth and NFC Features</b>.</li> <li>Press and hold the button for <b>4 seconds</b> to enter standby mode.</li> <li>Press and hold the button for <b>8 seconds</b> to power it off.</li> </ul>
2	Play / Pause Button	Press to play / pause a track.
3	Previous Track / Previous Folder Button	<ul style="list-style-type: none"> <li>Press once to go to the previous track;</li> <li>Press and hold to go to the previous folder.</li> </ul>
4	Next Track / Next Folder Button	<ul style="list-style-type: none"> <li>Press once to go to the next track;</li> <li>Press and hold to go to the next folder.</li> </ul>
5	Voice Recording Button	Press to start / stop voice recording.
6	Voice Playback Button	Press to start / stop voice playback.
7	Microphone Mute Switch	Slide to mute / unmute hardware microphone.
8	Shuffle	Slide to switch random play mode on / off.

	Button / Switch	Description
	Switch	
9	Megaphone Switch	Slide to switch megaphone on / off.

## Connectivity - Input / Output Jacks

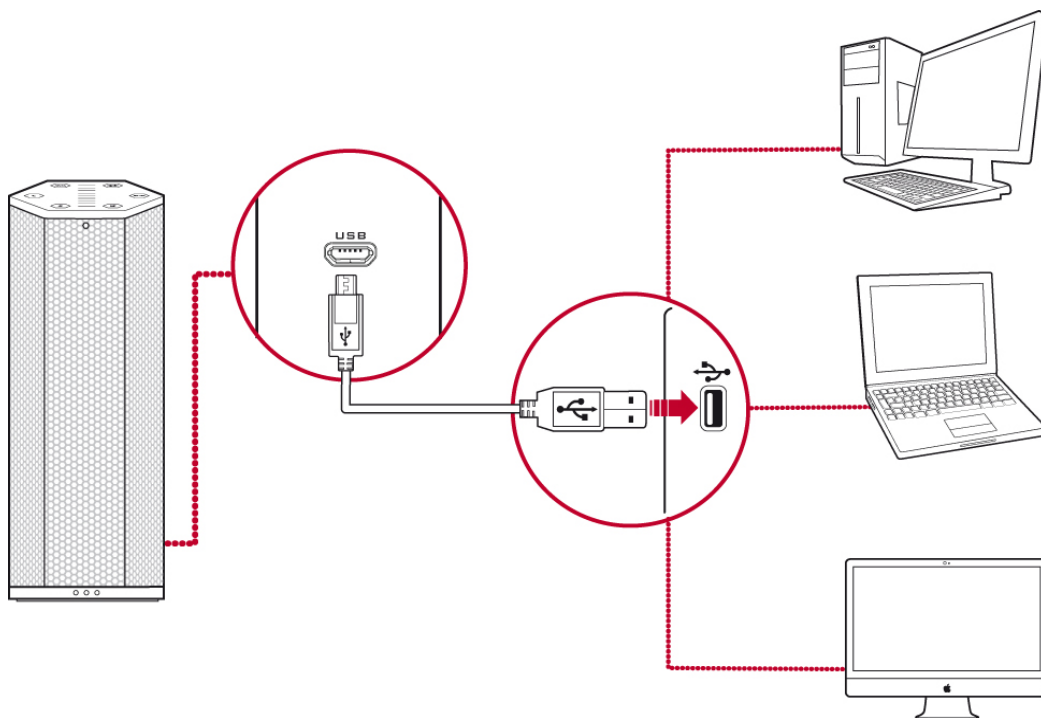


	Slot / Jack	Description
1	MicroSD Slot	Supports MicroSD card up to 32GB. You are able to save recorded voice files and playback MP3 files from the MicroSD card.
2	USB Port	For charging your mobile devices, for eg. iPhone, iPad, etc.
3	Headphone	Connects to stereo headphones with a 3.50mm (1/8-inch) plug.
4	Aux / Mic In	Connects to line-level sources (such as MP3 players) or microphones with a 3.50mm (1/8-inch) plug. You can manually switch between AUX and MIC inputs via the <b>Control Panel &gt; Sound</b> interface.
5	MicroUSB	Connects to USB ports of PC / laptop for audio output via a MicroUSB connector. Alternatively, you may connect it to the power socket via the USB Power Adapter.

# Setting Up Your Sound BlasterAxx

The SBX 200 is a refined portable Sound BlasterAxx with built-in rechargeable battery, MP3 playback, *Bluetooth* connectivity and NFC feature. You can either connect the SBX 200 to a computer via the USB or by connecting it to the power supply. Or simply operate it in standalone mode, powered by the built-in battery.

## Connecting to a Computer



Setting the default audio device **(for Mac OS only)**

- (i) Go to System Preferences and click **Sound**.
- (ii) Click the Output tab, then select **Sound BlasterAxx SBX 200**.
- (iii) Click the Input tab, then select **Sound BlasterAxx SBX 200**.

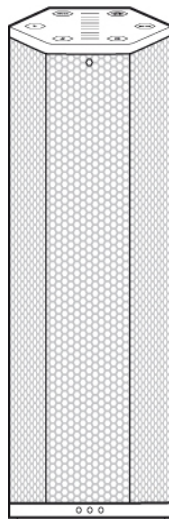
**OR**

## Connecting to a Power Supply



OR

## Standalone Mode





# Using Your Sound BlasterAxx

---

Whether you wish to listen to your favorite tracks from MP3 players, experience realistic audio while playing games on your PC and game consoles or receive clear voice and audio outputs during video / audio conferencing without the hassle of an additional microphone or headset, your SBX 200 provides the ideal solution.

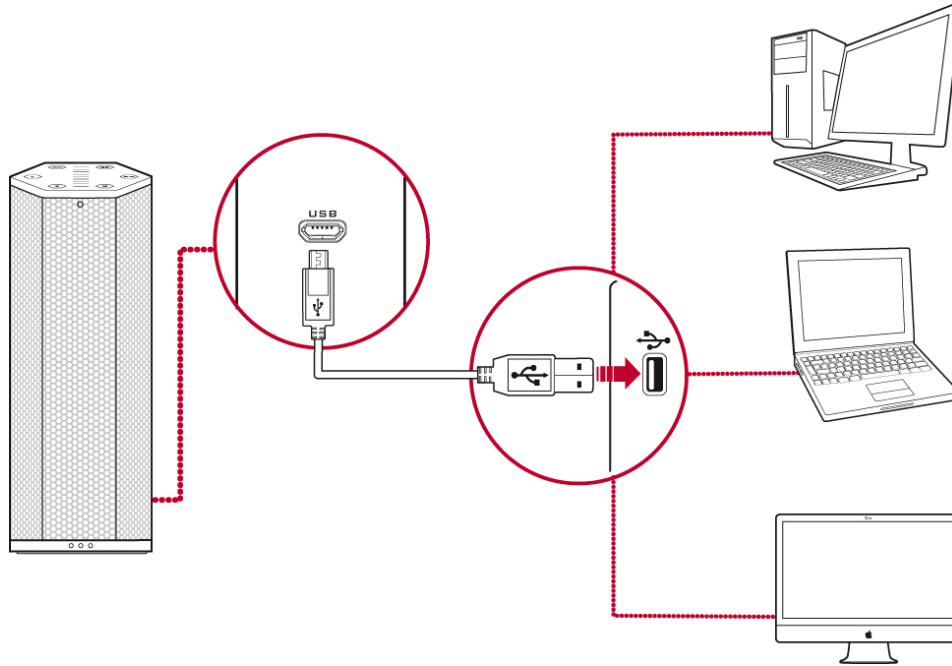
Various scenarios where the Sound BlasterAxx can be used include:

- **Connecting the Sound BlasterAxx For Audio Entertainment**  
Connect your Sound BlasterAxx to your computer via USB or to other portable entertainment devices including MP3 players, mobile phones etc. via the AUX IN jack and enjoy clear audio quality. You may also connect the Sound BlasterAxx to various *Bluetooth* enabled devices via *Bluetooth* or NFC for group conferencing or music playback.
- **Video / Audio Conferencing, Karaoke and Recording**  
The built-in microphone along with CrystalVoice technology provides a truly hands-free solution to video / audio conferencing via the web. The "What You Hear" application further allows you to mix the microphone input and the currently playing track or video with instant playback, creating a Karaoke-type system on your computer. You may even record your Voice over IP (VoIP) calls and internet telephony conversations.
- **MP3 Playback, Voice Recording and Megaphone**  
The SBX 200 is designed with built-in MP3 playback, voice recording and megaphone features which does not require any external connection.
- **Connecting Headphones / Headsets**  
If required, headphones and headsets can be connected to the Sound BlasterAxx's headphone jack.

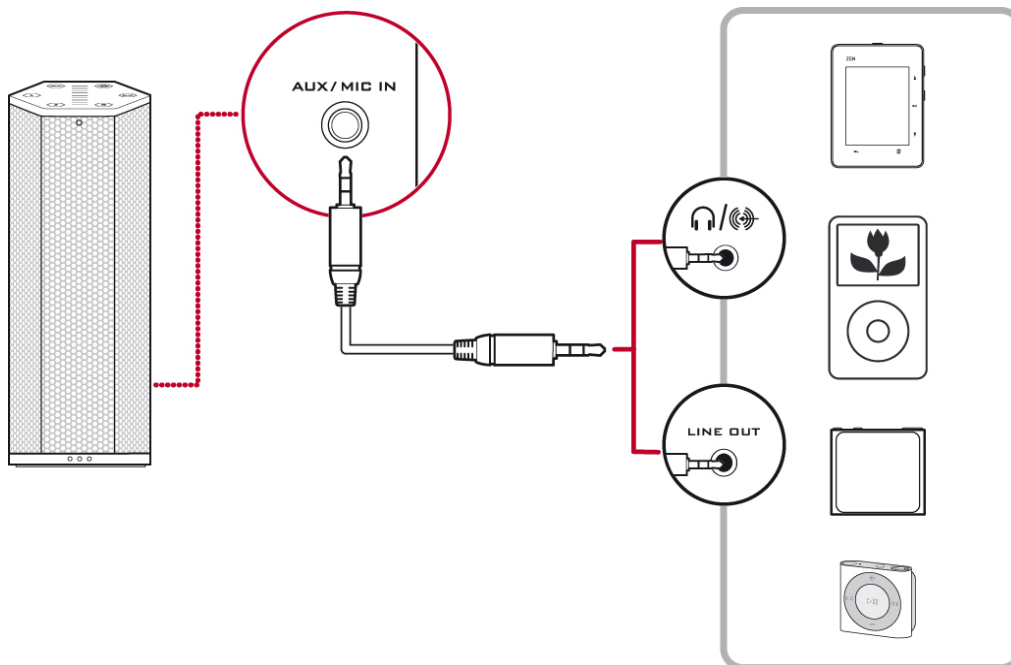
## Connecting the Sound BlasterAxx For Audio Entertainment

The SBX 200 is equipped with a MicroSD slot, a MicroUSB jack, an Aux In jack, and a built-in *Bluetooth* transceiver for connection to a wide array of devices. The SBX 200 can either be powered by its built-in battery, or by connecting to a computer or to a wall socket using a USB Power Adapter. This section illustrates the connection.

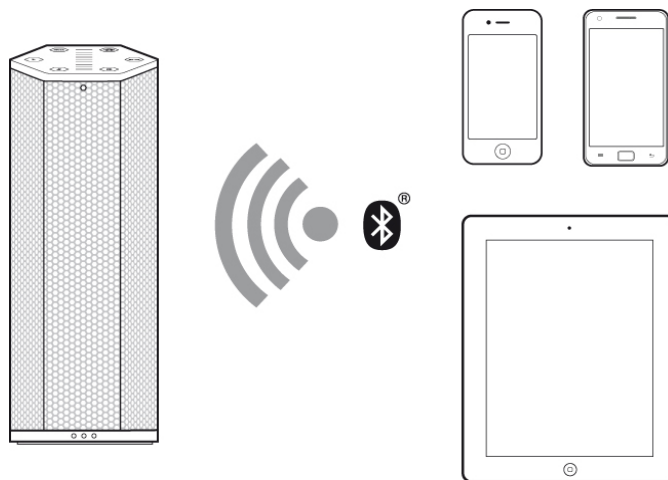
### PC / Mac



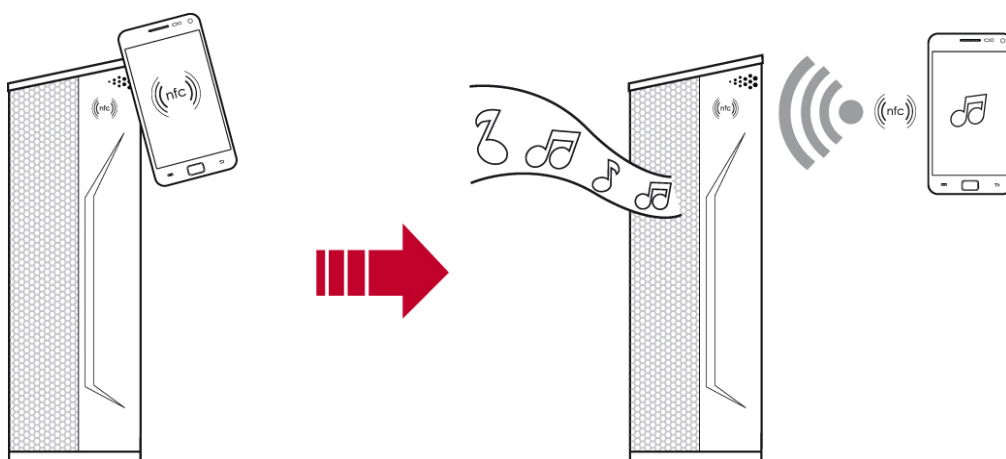
### MP3 Players / CD Players and Other Portable Entertainment Devices



## Bluetooth-Enabled Devices



## NFC-Enabled Devices



## Video/Audio Conferencing, Karaoke and Recording

Video / Audio conferencing via the various messaging applications available in the market is made simpler with the SBX 200's built-in stereo microphones. Equipped with configurable CrystalVoice technology, the Sound BlasterAxx, coupled with its microphone, delivers crystal clear voice and audio reception during conferencing.

The Sound BlasterAxx is also equipped with a "What You Hear" feature, allowing you to turn your computer into a Karaoke station. Simply speak / sing into the Sound BlasterAxx to mix your voice input with music tracks, hearing the playback while recording.

You can also record voice conversations held over instant messaging tools such as Google Talk, Skype etc. using the "Wave/Aux/Mic Mix" feature installed via the Creative driver.

### Note:

*This feature is only available in the Windows environment.*

To use this feature, simply follow the steps below:

1. Install the Creative Driver included in the software bundle for your product. Please refer to **Using the Software** for installation instructions.
2. From the **Start** menu, navigate to the Windows **Control Panel** and view **Sound** settings.
3. In the **Sound** dialog window, select the **Recording** tab. From the list of devices connected to your PC, right-click the **Wave/Aux/Mic Mix** device and select **Set as Default Device**.
4. Activate your IM voice conversation.
5. Launch a third-party sound recording tool of your choice and start recording the conversation.



## MP3 Playback, Voice Recording and Megaphone

The built-in battery, MP3 playback and voice recording features on the SBX 200 offer a highly portable audio / music player with great audio quality to travelers.

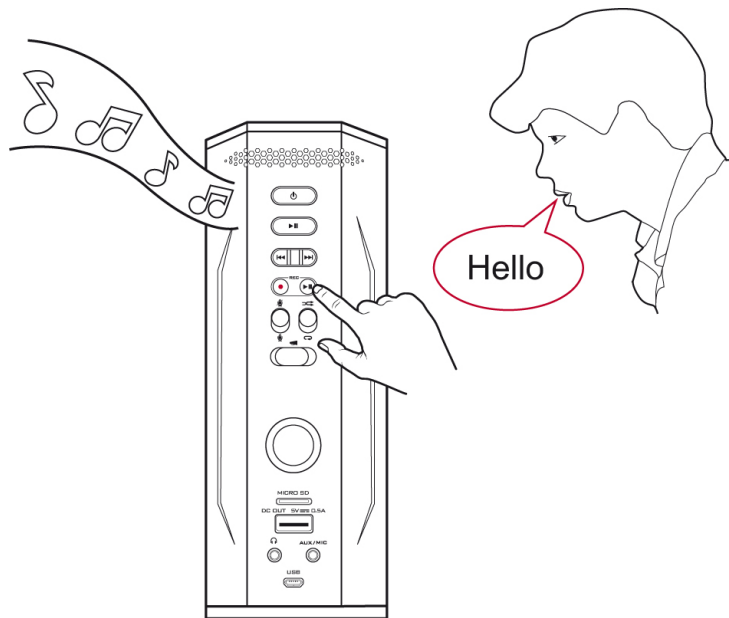
Your SBX 200 has various buttons behind it which you can select for your MP3 playback. Refer to **Understanding Your Sound BlasterAxx** for types of buttons available and their functions.

1. Insert a MicroSD card with MP3 files into the MicroSD slot.  
**Note:** The MicroSD slot supports up to 32GB card.
2. Press the Play or Pause button to start or stop playing the MP3 files.
3. To play the next track, press the Next Track button once.  
To return to the previous track, press the Previous Track button once.  
**Note:** Press and hold the Next / Previous Track button to go to the Next / Previous Folder.

Simply record your voice using the Voice Recording / MP3 Playback buttons on SBX 200.

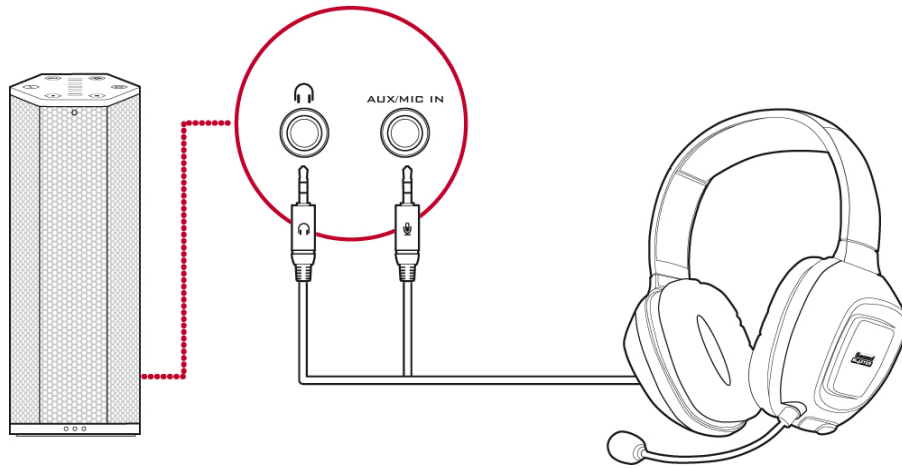
1. Press the Voice Recording button behind your SBX 200 to start recording.
2. The recorded file will be saved onto the MicroSD card.
3. Playback the recorded voice file by pressing the Voice Playback button.

You may utilize the latest megaphone function by sliding its switch to turn it on / off.



## Connecting Headphones / Headsets

Headphones and headsets can be connected to the Sound BlasterAxx via the Headphone jack. Please note that the Sound BlasterAxx's speaker will be automatically muted when a headphone is connected.



# Using the Software

---

A specialized software for the Sound BlasterAxx is developed to provide additional enhancements to the audio and voice inputs and outputs of the product. The software bundle supports a range of operating systems including:

- Windows 8, Windows 7, Windows Vista
- Mac

To take full advantage of your Sound BlasterAxx, we recommend downloading and installing this software into your computer.

## Note:

*Some applications are available only for certain operating systems. To learn more about each application, please consult its respective Online Help.*

*Depending on your model and software version, the color theme of the user interface may differ.*

## Installation and Uninstallation - Windows

For **Windows OS**, the following applications are included in the software bundle:

- Sound BlasterAxx Control Panel
- Creative Software AutoUpdate
- Creative System Information
- Product Registration
- Creative ALchemy
- Host OpenAL
- Creative Driver

You can also download the following bonus applications from [www.creative.com/support](http://www.creative.com/support):

- Creative WaveStudio
- Creative Media Toolbox

## Installing

### Note:

*Please ensure that your product is connected to the computer running the installation.*

1. Using a standard web browser, visit [www.creative.com/support](http://www.creative.com/support) and locate the software package for the Windows operating system.
2. Download this package into your local hard disk.
3. Locate and launch the software package.
4. Follow the on-screen instructions to complete the installation.
5. When prompted, restart your computer.
6. Launch the application by clicking **Start > Programs or All Programs > Creative > Sound BlasterAxx > Sound BlasterAxx Control Panel**



This software includes a number of configurations that help you control the basic functions of your Sound BlasterAxx plus several software enhancement configurations that can be made to heighten your Sound BlasterAxx's performance. The menu column on the left of the interface allows you to navigate to the configuration interface for each of these enhancements.

## Uninstalling

In the event that an uninstallation is required (such as for upgrades), please follow the following procedure.

1. Click **Start > Control Panel > Uninstall a program**
2. Select the **Sound BlasterAxx** entry.
3. Click the **Uninstall** button.  
If the **User Account Control** dialog box appears, click the **Continue** button.
4. Click the **Yes** button.
5. When prompted, restart your computer.



# Installation and Uninstallation - Mac

For **Mac OS**, the following applications are included in the software bundle:

- Sound BlasterAxx Control Panel
- Product Registration
- Creative Uninstaller

## Installing

### Note:

*Please ensure that your product is connected to the computer running the installation.*

1. Using your web browser, visit [www.creative.com/support](http://www.creative.com/support) and locate the software package for the Mac OS.
2. Download this package into your local hard disk.
3. Double-click the downloaded file to uncompress it.
4. Double-click the uncompressed DMG file.
5. Double-click the **Install** icon and follow the subsequent on-screen instructions to complete the installation.
6. Launch the **Sound BlasterAxx Control Panel** from the **Applications > Creative > Sound BlasterAxx** folder.



This software includes a number of configurations that help you control the basic functions of your Sound BlasterAxx plus several software enhancement configurations that can be made to heighten your Sound BlasterAxx's performance. The menu column on the left of the interface allows you to navigate to the configuration interface for each of these enhancements.

## Uninstalling

In the event that an uninstallation is required (such as for upgrades), please follow the following procedure.

1. Click **Applications > Creative > Creative Uninstaller**
2. Select the Creative product to be uninstalled.
3. Click the **Uninstall** button.
4. Follow the on-screen instructions.

## Using the Sound BlasterAxx Control Panel

The rest of this chapter explains how to use the Sound BlasterAxx Control Panel to view and adjust the various features of your Sound BlasterAxx product. The examples and screenshots below uses Windows as an example. The UI for other operating systems may differ slightly.

### Managing Your Profiles

The Sound BlasterAxx Control Panel comes equipped with a set of pre-configured profiles to suit your different needs including gaming, movies/videos, music, etc. To activate a profile,

1. From the left menu, select "**Speaker Settings**" for pre-set audio profiles or "**Microphone Settings**" for voice profiles.
2. Select the profile you wish to use.



### Modifying Profile Settings

You can also modify the pre-configured settings of each profile.

1. Select a profile to apply it to your SBX 200.
2. Select "**Speaker Settings > SBX Pro Studio**" and / or "**Speaker Settings > Equalizer**" to edit the configuration of the currently selected speaker profile.
3. Select "**Microphone Settings > CrystalVoice**" to edit the currently selected microphone profile.
4. Return to the profile interface. All changes made in steps 2 and 3 will be reflected here.
5. Click [**Save**] to save your changes or click [**Reset**] to return the profile to its pre-configured settings.

## Adjusting Speaker Volume Via Software

A master volume slider is available at the bottom left corner of the interface. Drag the slider to adjust the master volume. You can also mute / unmute the speaker by clicking the speaker icon to the left of the slider.



## Mixer Settings

A mixer is also available via the software, allowing you to adjust the volume levels of individual outputs and channels including the microphone, speakers, etc. Simply click the "**Mixer**" option on the menu and adjust the volumes using the sliders.



## Enhancing the Audio - SBX Pro Studio

SBX Pro Studio enhances the audio output of your Sound BlasterAxx using software optimizations. To configure SBX Pro Studio, click the "**SBX Pro Studio**" menu option on the left.



Follow the steps below to toggle on SBX Pro Studio and adjust the level of enhancements.

1. Click the power button to toggle ON SBX Pro Studio.
2. Select the type(s) of enhancements to apply and drag the sliders to adjust the level for each enhancement.
3. Click the play button to test the audio output, if necessary.

### Note:

*You can also toggle SBX Pro Studio ON via the physical touchscreen of the Sound BlasterAxx. Enhancement adjustments can only be made via the software.*

SBX Pro Studio includes a number of enhancements for movies and gaming, elevating your movie and gaming experience to the next level. These include:

- **SBX Surround** - provides immersion control to enhance the natural sense of audio depth and spaciousness by creating virtual surround sound channels. Stereo content or multichannel content will sound as if its coming from all sides while voices remain centered in front and original balance and timbre is preserved.
- **SBX Crystalizer** - restores the natural dynamic range that is lost when music files (iTunes and MP3) gets compressed. This makes the music sound as good as the artist originally intended, and adds an enhanced level of realism for movies and games.
- **SBX Bass** - fills in the missing low frequency tones and gives the extra impact for a better entertainment experience. Consumers no longer have to tolerate a lack of bass in speakers as the SBX Pro Studio Bass technology dramatically improves the sound experience even in the absence of a subwoofer.
- **SBX Smart Volume** - addresses the problem of abrupt volume level changes during playback and between songs by continuously measuring volume automatically, applying gain and attenuation intelligently to compensate for any changes.
- **SBX Dialog Plus** - enhances the voices in movies for clearer dialog, allowing the listener to hear the dialog over the rest of the soundtrack and over ambient noise in the listening environment.

## Enhancing the Microphone - CrystalVoice

The SBX 200 is equipped with built-in stereo microphones, allowing you to easily carry out video/audio conferencing using popular VoIP applications such as Ventrilo<sup>®</sup> etc. CrystalVoice enhancements help to further this experience by enhancing the clarity of such communications.

To configure CrystalVoice settings, Click the "**CrystalVoice**" menu option on the left.



1. Click the power button to turn on CrystalVoice.
2. Select the SBX 200 as your recording device, adjusting the microphone volume using the slider.
3. Select the desired enhancements to turn on and adjust the settings according to your needs.
4. Click **[Test]** and speak into your Sound BlasterAxx to hear your voice recorded based on the configured settings. Readjust if necessary.

CrystalVoice enhancements helps you hear and be heard clearly by all participants of the conference, doing away with noisy background distortions and unclear communication that disrupts your online gaming and chatting experience. The various enhancements available include:

**CrystalVoice Acoustic Echo Cancellation** - eliminates echoes and enables the speaker to listen to the other parties clearly. Echoes are a common problem present in voice communication systems that disrupts conversations by making it difficult to hear the other party.

**CrystalVoice Noise Reduction** - enables the speaker to be heard clearly over background noise by constantly monitoring the environment and eliminating unwanted noise that interferes with the conversation.

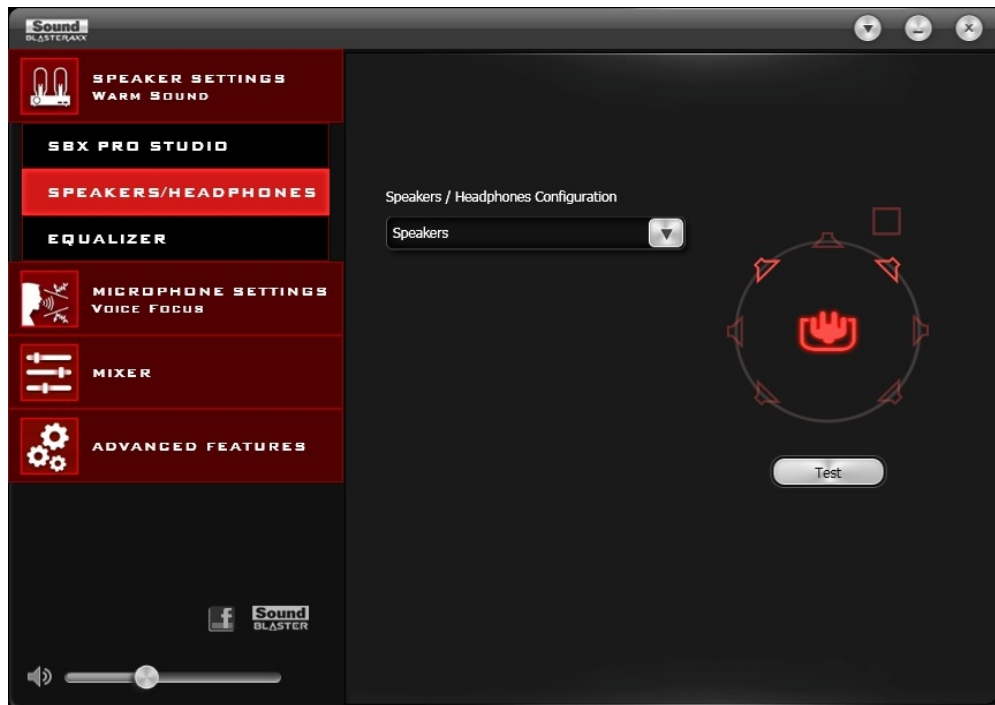
**CrystalVoice Smart Volume** - automatically adjusts the loudness of a voice to maintain a consistent volume level. This makes it convenient for the speaker to converse normally, regardless of his distance from the microphone.

**CrystalVoice FX™** - enables the alteration of voice with a variety of effects which can be used to enhance the tone of a voice, create interesting accents or even allow someone to sound like a completely different person.

**CrystalVoice Focus** - creates a zone and suppresses noise outside it to enable the speaker within to be heard with amazing clarity. Multiple microphones are used to focus, enhance the speaker's voice, and eliminate sounds outside the zone.

## View Speakers / Headphones Settings

Each SBX 200 is equipped with a headphone jack, allowing you to connect your favorite headphones to the Sound BlasterAxx for audio output. Connecting headphones to the Sound BlasterAxx automatically mutes the speaker. From the software, you can check whether audio is played via speakers or headphones.



1. View the current settings for the speakers / headphones.
2. Click **[Test]** to hear a sample audio clip played back based on the settings.

## Understanding Other Advanced Features

The software also provides other advanced features including:

- Equalizer Settings
- *Bluetooth* Auto Connect

### Equalizer Settings

Equalizers allows you to filter various audio frequency, thus controlling the tone of your audio output. The Sound BlasterAxx Control Panel comes equipped with a range of preset equalizer settings, helping you to select different audio tones easily. You can also manually modify or add equalizer presets.



To view the Equalizer Settings interface, select "**Equalizer**" from the menu. To apply and adjust an equalizer preset,

1. Check the **EQ** checkbox to enable the use of the equalizer.
2. From the drop down menu, select the preset to use.
3. Adjust the vertical slider bars to achieve your desired level.
4. Click [**Save**] to save the changes to the preset if necessary.

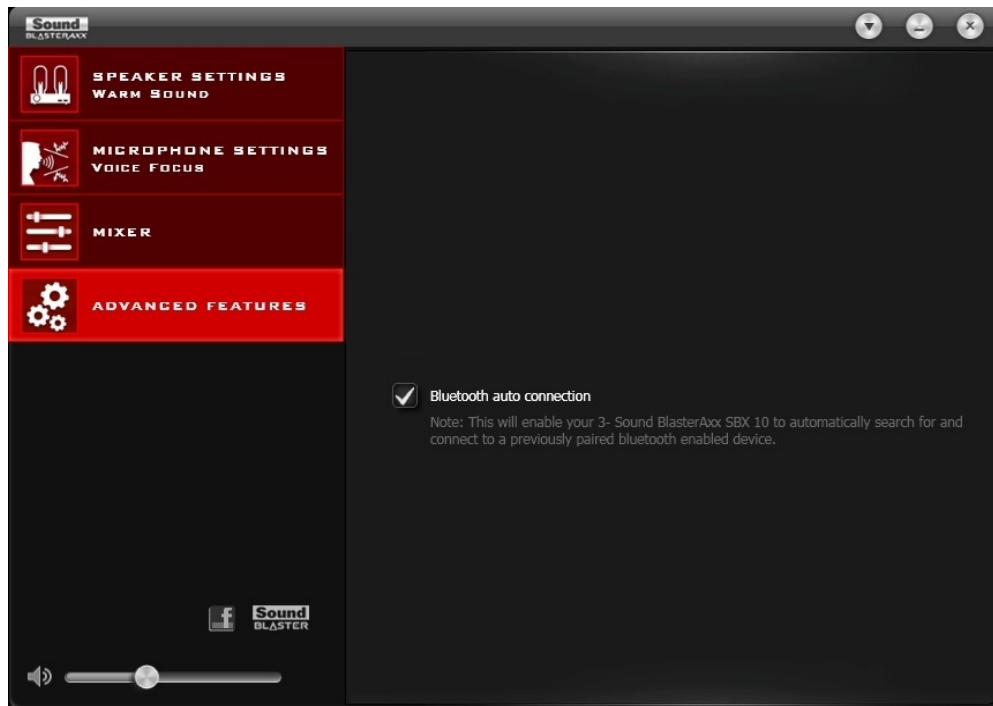
You can also delete any user created equalizer presets by selecting the preset from the drop down menu and clicking [**Delete**].

#### **Note:**

*All default equalizer presets cannot be deleted.*

## **Bluetooth Auto Connect**

The *Bluetooth* Auto Connect feature allows a paired *Bluetooth* device to be connected to the Sound BlasterAxx automatically. When the feature is enabled, the Sound BlasterAxx detects and reconnects to the previously paired *Bluetooth* device when it is turned on.



To enable *Bluetooth* Auto Connect, select the **Bluetooth Auto Connect** checkbox.



# Using the *Bluetooth* and NFC Features

You can stream music from your *Bluetooth* enabled devices to your SBX 200.

## Enjoy audio from your *Bluetooth* enabled devices

Enjoy your favorite music from your *Bluetooth* devices; simply follow these steps to connect them.

Action	LED Status	Status
Press the Power button once to turn on the Sound BlasterAxx SBX 200.	SBX 200 top panel and battery indicator are lit.	SBX 200 is powered ON.
Press and hold Power / <i>Bluetooth</i> Connect button for 2 seconds.	SBX 200 <i>Bluetooth</i> LED blinks rapidly.	Pairing mode. Ready to be paired with new device.
Turn ON the <i>Bluetooth</i> feature on your device. Search and select "Sound BlasterAxx SBX 200". If password is required, enter 0000 and connect to it.	SBX 200 <i>Bluetooth</i> LED lit.	Ready to stream music.

### Note:

*The SBX 200 will exit from pairing mode if no device is paired within 1 minute.*

Reconnect your Sound BlasterAxx to the PC by setting it as the default audio device:

### For Windows,

- i. Go to **Control Panel** and click **Sound**.
- ii. Click the **Playback** tab, select **Sound BlasterAxx SBX 200**, then click the **Set Default** button.
- iii. Click the **Recording** tab, select **Sound BlasterAxx SBX 200**, then click the **Set Default** button.

### For Mac,

- i. Go to **System Preferences** and click **Sound**.
- ii. Click the **Output** tab, then select **Sound BlasterAxx SBX 200**.
- iii. Click the **Input** tab, then select **Sound BlasterAxx SBX 200**.

## Easy one-touch pairing with NFC

You may now pair your NFC-enabled devices with the SBX 200 with a single tap using the NFC technology; simply follow these steps to connect them.

Action	LED Status	Status
Press the Power button once to turn on the Sound BlasterAxx SBX 200.	SBX 200 top panel and battery indicator are lit.	SBX 200 is powered ON.
Turn ON the NFC feature on your device. Touch the NFC area of your device with the NFC area of the SBX 200. If prompted "Are you sure you want to pair the <i>Bluetooth</i> device?", tap "Yes".	SBX 200 <i>Bluetooth</i> LED lit.	Device paired automatically. Ready to stream and play music.

Touch your device with the SBX 200 again to disconnect.

**Note:**

*Only applicable to NFC-enabled devices.*

# General Specifications

---

## Capacitive Touchscreen User Interface

- Master Volume Slider with LED Backlit
- Voice Focus On / Off button with LED Backlit
- Noise Reduction On / Off button with LED Backlit
- SBX Pro Studio Master On / Off button with LED Backlit
- Speaker Mute button with LED Backlit
- Mic Mute with button LED Backlit
- "Call" button with LED Backlit

## Controls and Indicators

- 3 white LEDs for power / battery indication
- Blue LED for *Bluetooth* indication
- Power / *Bluetooth* Connect button

## Back Panel Controls

- MP3 Playback
  - Playback MP3 encoded files
  - Playback control with hard buttons
  - Supports up to 32 GB MicroSD card
  - Supported on Sound Blaster Central mobile application
- Voice Recording
  - Record voice with CrystalVoice effects from the built-in Microphone
  - Save recorded files onto MicroSD card
  - Ability to playback recorded files
- Megaphone
  - Slide switch to turn megaphone on / off

## Inputs

- *Bluetooth* Wireless, NFC
- MicroSD slot, MicroUSB port, USB 2.0
- One 3.50 mm (1/8-inch) stereo jack for Aux In or Microphone In
- Built-in Microphone: High quality dual microphone array

## Outputs

- Speaker
- One 3.50 mm (1/8-inch) stereo jack for Headphones Playback

## Physical Specifications

- Dimensions (L x W x H) : 64 x 72.3 x 200.6 mm
- Weight: Approx. 0.5 kg

## Technical Specifications

*Bluetooth* Version: *Bluetooth* 2.1 + EDR (Enhanced Data Rate)

*Bluetooth Profiles:*

- A2DP (*Wireless Stereo Bluetooth*)
- AVRCP (*Bluetooth Remote Control*)
- HFP (*Hands-Free Profile*)

Audio Codec: AAC, SBC, aptX

*Bluetooth Operating Frequency:* 2402 - 2480 MHz

*Bluetooth Operating Range:* Up to 10 meters / 33 feet  
(Measured in open space. Walls and structures may affect range of device.)

Operating Temperature range: 0°C to 45°C

Lithium Ion Battery: 3.7 V 5200 mAh (19.24 Wh)

USB Power Adapter Input: 100-240 VAC 50/60 Hz, Output 5 VDC 2.1 A

Speaker Output: xx W per channel

**Note:**

*Compliance markings are located on the bottom of this product.*

*The serial number for your Sound BlasterAxx SBX 200 is located on the bottom of this product. Please write the serial number down and keep it in a secure place.*

# Troubleshooting and Support

---

This chapter provides solutions to issues that may be encountered during the installation or usage of your Sound BlasterAxx.

## 1. The Sound BlasterAxx SBX 200 does not power on.

The Sound BlasterAxx is designed to be powered on by connecting to a PC / laptop via USB or through a physical power socket using a USB Power Adapter. It can also be powered on simply by the built-in battery.

Make sure the built-in battery for SBX 200 is charged. Check the volume bar for the battery status by pressing on the Power button once. The volume bar will raise to show the battery level.

If you are connected via USB, please ensure that the connected computer has recognized your Sound BlasterAxx correctly. If not, please follow the steps below in order until the issue is corrected.

- i. Tighten the USB connection at both ends of the cable.
- ii. The USB cable may be faulty. Replace the cable with a working USB cable.
- iii. Your computer's USB port may be disabled, or faulty or requires a driver update. Check your computer's hardware device manager to determine the working status of your USB port. Enable your USB port and / or update its driver.

If the problem persists, connect the Sound BlasterAxx to a different USB port.

If you are connected via a USB Power Adapter, please check that all cables are tightly connected and the power socket is turned on.

## 2. I am having difficulty in linking up the *Bluetooth* device with SBX 200.

Ensure that your *Bluetooth* enabled device supports A2DP profile.

Please also try the following steps:

- Make sure that *Bluetooth* is enabled (turned on) on your device.
- On some devices, ensure that the Sound BlasterAxx SBX 200 is selected as the default headset / wireless stereo audio playback device.
- Make sure that there are no other wireless devices within a 10 meter radius when pairing.
- Position them within 1 meter or closer to each other if you experience pairing difficulties.
- Check if you have input the correct passcode / pin number (0000) on your *Bluetooth* device.
- Ensure that both, your *Bluetooth* device and SBX 200 are not connected to any other devices.
- Pair the devices again.
- Should the problem persist, reset the SBX 200 to factory default.

## 3. I wish to pair my mobile device with SBX 200 using NFC.

Ensure that your mobile device is NFC-enabled.

- Turn on the NFC feature on your mobile device.
- Check the SBX 200 to ensure it is turned on.
- Tap your mobile device to the SBX 200 to pair the devices.
- Play songs from your mobile device via the SBX 200.

## 4. *Bluetooth* link is established and paired between the devices but there's no music.

Ensure that the device's volume is not set to minimum or muted. With some built-in *Bluetooth* enabled computers or 3rd party USB *Bluetooth* dongles, you may be required to manually specify / set-up the audio output as the Sound BlasterAxx SBX 200 (under sound and audio devices section) on your computer's operating system.

**Note:**

*Audio transmitted from your Sound BlasterAxx may be slightly delayed; this is due to the characteristics of Bluetooth technology.*

#### **5. No sound from headphones.**

Please check the following:

- Headphones are securely connected to the headphone jack.
- **Headphones** is recognized as the output device in the **Speakers / Headphones** interface on the Control Panel.

#### **6. There is no audio output from the SBX 200.**

Please check the following:

- Headphones are not connected to the Sound BlasterAxx. Connecting headphones automatically mutes the speaker.
- Check the volume level of the Sound BlasterAxx for the following:
  - Volume mute LED on the touchscreen is not lighted.
  - Master volume slider on the touchscreen is not at 0 bars.
  - Master volume and mute icon on the software is at the appropriate level.
  - The appropriate channel(s) and output types on the **Mixer** settings interface is not 0.

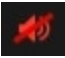
#### **7. Unable to record using the built-in microphone.**

Please check the following:

- The microphone is not disabled or muted. That is, the microphone mute LED on the touchscreen is not lit.
- Microphone volume and the volume of other recording devices on the **Mixer** settings interface is not at 0.
- For Windows systems, navigate to **Control Panel > Sound > Recording** tab. Right-click on the recording endpoint to view its Properties. Ensure that the **Listen to this device** option is disabled.

#### **8. Unable to hear instant playback from microphone input.**

The SBX 200 is equipped with "What Your Hear" and "Wave/Aux/Mic Mix" features that allow you to record whatever you say into your microphone and hear it played back instantly. To ensure that this feature works however, first ensure that the correct microphone input is unmuted by following the steps below.

- i. Launch the **Sound BlasterAxx Control Panel** and select **Mixer**.
- ii. Check to ensure that your microphone is not muted. For example, if you are using the built-in microphone, click the button  next to the **Internal Microphone Array** to unmute it. If you are using an external microphone, such as a headset, please ensure that you unmute the **Microphone** option instead.



Then, check that the correct microphone is selected as the system sound input device. For Windows systems,

- i. Navigate to **Control Panel > Sound > Recording** tab.
- ii. In **Recording** tab, ensure that the correct microphone is selected. For example, if you are using the built-in microphone, the **Internal Microphone Array** should be selected. If you are using an external microphone, the **Microphone** should be selected instead.



For Mac systems,

- i. Go to **System Preferences** and click **Sound**.
- ii. Click the **Input** tab and ensure that the correct microphone is selected as the input device.

## Additional Support

If you encounter any other issues or have any other enquiries about your SBX 200 or any other Creative products, please visit our comprehensive knowledge base at [support.creative.com](http://support.creative.com) or [www.soundblaster.com](http://www.soundblaster.com) for additional information.

# Regulatory Information

---

The following sections contains notices for various countries.

## Caution:

*This product is intended for use with FCC/CE certified computer equipment. Please check the equipment operating/installation manual and/or the equipment manufacturer to verify/confirm if your equipment is suitable prior to the installation or use of the product.*

## Notice for the USA

### Federal Communication Commission (FCC) Interference Statement

**FCC PART 15:** This equipment has been tested and found to comply with the limits for a Class B digital device, pursuant to Part 15 of the FCC Rules. These limits are designed to provide reasonable protection against harmful interference in a residential installation. This equipment generates, uses and can radiate radio frequency energy and, if not installed and used in accordance with the instructions, may cause harmful interference to radio communications. However, there is no guarantee that interference will not occur in a particular installation. If this equipment does cause harmful interference to radio or television reception, which can be determined by turning the equipment off and on, the user is encouraged to try to correct the interference by one or more of the following measures:

- Reorient or relocate the receiving antenna.
- Increase the separation between the equipment and receiver.
- Connect the equipment into an outlet on a circuit different from that to which the receiver is connected.
- Consult the dealer or an experienced radio/TV technician for help.

This device complies with part 15 of the FCC Rules. Operation is subject to the following two conditions:

1. This device may not cause harmful interference, and
2. This device must accept any interference received, including interference that may cause undesired operation.

## Caution:

*To comply with the limits of the Class B digital device, pursuant to Part 15 of the FCC Rules, this device must be installed with computer equipment certified to comply with Class B limits.*

All cables used to connect to the computer and peripherals must be shielded and grounded. Operation with non-certified computers or non-shielded cables may result in interference to radio or television reception.

**MODIFICATION:** Any changes or modifications not expressly approved by the grantee of this device could void the user's authority to operate the device.

### Federal Communication Commission (FCC) Radiation Exposure Statement

This equipment complies with FCC radiation exposure limits set forth for an uncontrolled environment. This transmitter must not be co-located or operating in conjunction with any other antenna or transmitter. Power is so low that no exposure calculation is needed.

## Notice for Canada

This Class B digital apparatus complies with Canadian ICES-003 and RSS-210.

Cet appareil numérique de classe B est conforme aux normes canadiennes NMB-003 et CNR-210.

This device complies with Industry Canada licence-exempt RSS standard.

Operation is subject to the following two conditions:



1. This device may not cause harmful interference, and
2. this device must accept any interference received, including interference that may cause undesirable operation.

Cet appareil est conforme avec Industrie Canada RSS standard exempts de licence.

Son fonctionnement est soumis aux deux conditions suivantes :

1. Le matériel ne peut être source D'interférences et
2. Doit accepter toutes les interférences reçues, Y compris celles pouvant provoquer un fonctionnement indésirable.

**CANADIAN CLASS B STATEMENT:** This digital device does not exceed the Class B limits for radio noise emissions from digital apparatus as set out in the interference-causing equipment standard entitled "Digital Apparatus," ICES-003 of the Department of Communications.

Cet appareil numérique respecte les limites de bruits radioélectriques applicables aux appareils numériques de Classe B prescrites dans la norme sur le matériel brouilleur: "Appareils Numériques," NMB-003 édictée par le ministre des Communications.

**MODIFICATION:** Any changes or modifications not expressly approved by the grantee of this device could void the user's authority to operate the device.

Toute modification non approuvée explicitement par le fournisseur de licence de l'appareil peut entraîner l'annulation du droit de l'utilisateur à utiliser l'appareil.

### Notice for Australia / New Zealand



Complies with the requirements of the ACMA Radiocommunications (Electromagnetic Compatibility) Standard 2008.

### Ukraine RoHS Statement

Обладнання відповідає вимогам Технічного регламенту щодо обмеження використання деяких небезпечних речовин в електричному та електронному обладнанні, затвердженого постановою Кабінету Міністрів України від 3 грудня 2008 № 1057

### European Compliance

This product conforms to the following:

RoHS Directive 2011/65/EU.

EMC Directive 2004/108/EC.

Mains operated products for the European market comply with Low Voltage Directive 2006/95/EC and Commission Regulation(s) Implementing Directive 2009/125/EC.

Communication / RF wireless products for the European market comply with R&TTE Directive 1999/5/EC.

### Caution:

*To comply with the Europe CE requirement, this device must be installed with CE certified computer equipment which meet with Class B limits.*

*All cables used to connect this device must be shielded, grounded and no longer than 3m in length. Operation with non-certified computers or incorrect cables may result in interference to other devices or undesired effects to the product.*

**MODIFICATION:** Any changes or modifications not expressly approved by Creative Technology Limited or one of its affiliated companies could void the user's warranty and guarantee rights.

## Vietnam RoHS Statement

This product is in compliance with Circular 30/2011/TTBCT of the Ministry of Trade of the Socialist Republic of Vietnam ("Circular"), it does not contain the following substances in concentration greater than the Maximum Limit value as specified in the Circular.

Substance	Maximum Limit (ppm) <sup>1, 2</sup>
• lead	1000
• mercury	1000
• cadmium	100
• hexavalent chromium	1000
• polybrominated biphenyls (PBB)	1000
• polybrominated diphenyl ethers (PBDE)	1000

<sup>1</sup> Maximum Limit does not apply to applications exempted from the Circular.

<sup>2</sup> Maximum Limit refers to concentration by weight in homogeneous materials.

## Notice for Korea

### B급 기기

(가정용 방송통신기자재)

이 기기는 가정용 (B급) 전자파적합 기기로서 주로 가정에서 사용하는 것을 목적으로 하며, 모든 지역에서 사용할 수 있습니다.

## Notice for Singapore



## Notice for Japan

### Recycling Rechargeable Battery



**Li-ion**

Lithium rechargeable battery is a resource that can be recycled.

- For recycling of embedded lithium rechargeable batteries inside Creative products, please do not attempt to remove the battery from the device. For recycling information and instruction, please go to Creative Media K K customer support at <http://jp.creative.com/support/contact/> (in Japanese)
- For recycling of replaceable (removable) lithium rechargeable batteries:



## 注意事項

- It is recommended to remove the rechargeable batteries when they are fully discharged.
- Precaution needs to be taken on metal parts of the battery by covering them with isolation materials such as scotch tape.
- Refer to the homepage of JBRC for information on recycling and recovery of rechargeable batteries and supporting shops. (<http://www.jbrc.com/>)

# Safety Information

---

Refer to the following information to use your product safely, and to reduce the chance of electric shock, short-circuiting, damage, fire, hearing impairment or other hazards. Improper handling may void the warranty for your product. For more information, read the warranty available with your product.

- Do not dismantle or attempt to repair your product.  
**Refer all servicing to authorized repair agents.**
- Do not expose your product to temperatures outside the range of 0°C to 45°C (32°F to 113°F).
- Do not pierce, crush or set fire to your product.
- Keep your product away from strong magnetic objects.
- Do not subject your product to excessive force or impact.
- Do not expose your product to water or moisture.  
If your product is moisture-resistant, take care not to immerse your product in water or expose it to rain.
- Use a mains plug that is appropriate for your country or region.
- To be completely disconnected from the power input, the mains plug has to be disconnected / detached from the mains.
- Disconnect the mains plug when the device is expected to be unused for several days.
- Place the product near a socket outlet, which is easily accessible.

## Bluetooth Product

- The short wave radio frequency signals of a *Bluetooth* device may impair the operation of other electronic and medical devices.
- Switch off the device where it is prohibited. Do not use the device in medical facilities, aircraft, refueling points, close to automatic doors, automatic fire alarms or other automatically controlled devices.
- Keep this device at least 20 cm from pacemakers and other medical devices. Radio waves may impair the operation of pacemakers and other medical devices.

## Embedded Battery

- Do not attempt to remove the embedded battery.  
The product must be disposed of according to local environmental regulations. To replace the battery, return your product to your regional support office. For product service information, go to [www.creative.com](http://www.creative.com).
- Do not expose to excessive heat such as sunlight, fire or the like.  
**CAUTION:** Risk of explosion if battery is replaced by incorrect types.

## Earphones

- Do not listen to audio on your earbuds or headphones at high volume for prolonged periods of time as hearing loss may result. For users in the United States, go to [www.hei.org](http://www.hei.org) for more information.
- Do not listen to your audio device at high volume when driving, cycling or crossing the road, especially in heavy traffic, or in any other traffic condition where such use will hinder safe travel on the roads. We recommend that consumers be extremely cautious when using this device on the road.

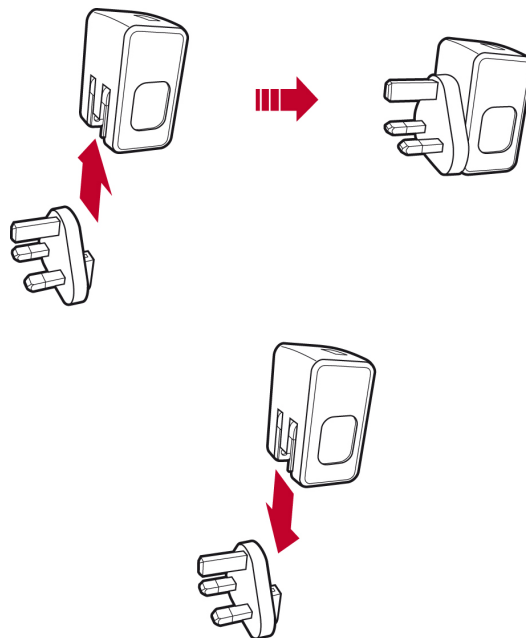


### **Avoiding Hearing Damage**

Permanent hearing loss may occur if the headphone is used at high volume. Set the volume to a safe level. You can adapt over time to a higher volume of sound that may sound normal but can be damaging to your hearing. If you experience ringing in your ears or muffled speech, stop listening and have your hearing checked. The louder the volume, the less time is required before your hearing could be affected. Hearing experts suggest that to protect your hearing:

- Limit the amount of time you use the headphone at high volume.
- Avoid turning up the volume to block out noisy surroundings.
- Turn the volume down if you can't hear people speaking near you

### **Installation and Removal of Power Adapter with Interchangeable Plugs**



# License and Copyright

---

Information in this document is subject to change without notice and does not represent a commitment on the part of Creative Technology Ltd. No part of this manual may be reproduced or transmitted in any form or by any means, electronic or mechanical, including photocopying and recording, for any purpose without the written permission of Creative Technology Ltd.

Copyright © 2013 Creative Technology Ltd. All rights reserved. Creative, the Creative logo, Sound BlasterAxx, the Sound BlasterAxx logo, SBX Pro Studio, the SBX Pro Studio logo, Recon3D and CrystalVoice are trademarks or registered trademarks of Creative Technology Ltd. in the United States and/or other countries. The *Bluetooth*<sup>®</sup> word mark and logos are registered trademarks owned by Bluetooth SIG, Inc. and any use of such marks by Creative Technology Ltd is under license. Other trademarks and trade names are those of their respective owners. All specifications are subject to change without prior notice. Use of this product is subject to a limited hardware warranty. Actual contents may differ slightly from those pictured. The software included in this packaging may not be used separately from the hardware. Before using the software, you must agree to be bound by the terms and conditions of the end user license agreement.

Version 1.0

March 2013