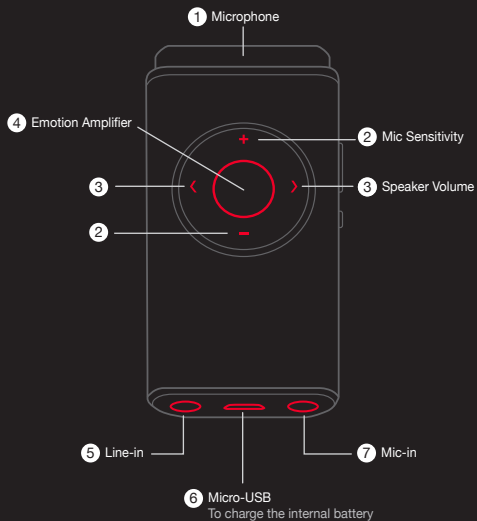


CREATIVE

**i**ROAR mic

## AT A GLANCE



## AT A GLANCE / AT A GLANCE / AT A GLANCE / AT A GLANCE / AT A GLANCE

### FR

1. Microphone
2. Mic Sensitivity
3. Speaker Volume
4. Emotion Amplifier
5. Line-in
6. Micro-USB  
To charge the internal battery
7. Mic-in

### DE

1. Microphone
2. Mic Sensitivity
3. Speaker Volume
4. Emotion Amplifier
5. Line-in
6. Micro-USB  
To charge the internal battery
7. Mic-in

### ES

1. Microphone
2. Mic Sensitivity
3. Speaker Volume
4. Emotion Amplifier
5. Line-in
6. Micro-USB  
To charge the internal battery
7. Mic-in

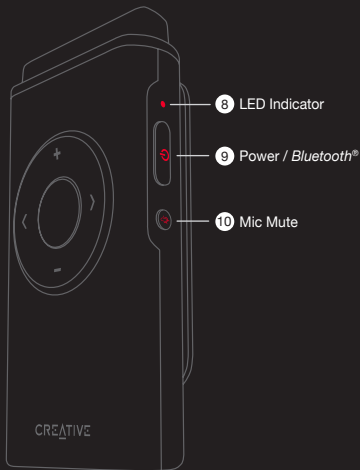
### IT

1. Microphone
2. Mic Sensitivity
3. Speaker Volume
4. Emotion Amplifier
5. Line-in
6. Micro-USB  
To charge the internal battery
7. Mic-in

### CS

1. Microphone
2. Mic Sensitivity
3. Speaker Volume
4. Emotion Amplifier
5. Line-in
6. Micro-USB  
To charge the internal battery
7. Mic-in

## AT A GLANCE (CONT.)



## AT A GLANCE / AT A GLANCE / AT A GLANCE / AT A GLANCE / AT A GLANCE

FR

- 8. LED Indicator
- 9. Power / Bluetooth®
- 10. Mic Mute

IT

- 8. LED Indicator
- 9. Power / Bluetooth®
- 10. Mic Mute

DE

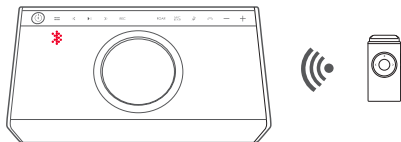
- 8. LED Indicator
- 9. Power / Bluetooth®
- 10. Mic Mute

CS

- 8. LED Indicator
- 9. Power / Bluetooth®
- 10. Mic Mute

ES

- 8. LED Indicator
- 9. Power / Bluetooth®
- 10. Mic Mute



## First time pairing

1. Set your device\* into *Bluetooth* pairing mode.
2. Power on the iRoar Mic. It will search and connect to the nearest device\*.

When powered on, the iRoar Mic automatically connects to the last paired device if it is on.

## To change device

Switch off the connected device. Repeat step 1.

\* iRoar Mic works best with:  
Creative iRoar, Sound Blaster® Roar, Sound Blaster X7

FR

## First time pairing

1. Set your device\* into *Bluetooth* pairing mode.
2. Power on the iRoar Mic. It will search and connect to the nearest device\*.

When powered on, the iRoar Mic automatically connects to the last paired device if it is on.

**To change Bluetooth device**  
Switch off the connected device.  
Repeat step 1.

\* iRoar Mic works best with:  
Creative iRoar, Sound Blaster Roar,  
Sound Blaster X7

DE

## First time pairing

1. Set your device\* into *Bluetooth* pairing mode.
2. Power on the iRoar Mic. It will search and connect to the nearest device\*.

When powered on, the iRoar Mic automatically connects to the last paired device if it is on.

**To change Bluetooth device**  
Switch off the connected device.  
Repeat step 1.

\* iRoar Mic works best with:  
Creative iRoar, Sound Blaster Roar,  
Sound Blaster X7

ES

## First time pairing

1. Set your device\* into *Bluetooth* pairing mode.
2. Power on the iRoar Mic. It will search and connect to the nearest device\*.

When powered on, the iRoar Mic automatically connects to the last paired device if it is on.

## To change Bluetooth device

Switch off the connected device.  
Repeat step 1.

\* iRoar Mic works best with:  
Creative iRoar, Sound Blaster Roar,  
Sound Blaster X7

IT

## First time pairing

1. Set your device\* into *Bluetooth* pairing mode.
2. Power on the iRoar Mic. It will search and connect to the nearest device\*.

When powered on, the iRoar Mic automatically connects to the last paired device if it is on.

**To change Bluetooth device**  
Switch off the connected device.  
Repeat step 1.

\* iRoar Mic works best with:  
Creative iRoar, Sound Blaster Roar,  
Sound Blaster X7

CS

## First time pairing

1. Set your device\* into *Bluetooth* pairing mode.
2. Power on the iRoar Mic. It will search and connect to the nearest device\*.

When powered on, the iRoar Mic automatically connects to the last paired device if it is on.

**To change Bluetooth device**  
Switch off the connected device.  
Repeat step 1.

\* iRoar Mic works best with:  
Creative iRoar, Sound Blaster Roar,  
Sound Blaster X7

## I'D LIKE TO BE HEARD

### Amplify your voice

Use iRoar Mic as a public address system.

Position the mic facing towards you to project your voice loud and clear.



### Be heard clearly

Adjust the mic distance until you find the best sound. If you are close to the speaker, reduce the mic sensitivity for better performance.

Use the foam windscreen included for improved vocal quality.

## I'D LIKE TO BE HEARD / I'D LIKE TO BE HEARD / I'D LIKE TO BE HEARD / I'D LIKE TO BE HEARD

FR

### Amplify your voice

Use iRoar Mic as a public address system.

Position the mic facing towards you to project your voice loud and clear.

### Be heard clearly

Adjust the mic distance until you find the best sound. If you are close to the speaker, reduce the mic sensitivity for better performance.

Use the foam windscreen included for improved vocal quality.

DE

### Amplify your voice

Use iRoar Mic as a public address system.

Position the mic facing towards you to project your voice loud and clear.

### Be heard clearly

Adjust the mic distance until you find the best sound. If you are close to the speaker, reduce the mic sensitivity for better performance.

Use the foam windscreen included for improved vocal quality.

ES

### Amplify your voice

Use iRoar Mic as a public address system.

Position the mic facing towards you to project your voice loud and clear.

### Be heard clearly

Adjust the mic distance until you find the best sound. If you are close to the speaker, reduce the mic sensitivity for better performance.

Use the foam windscreen included for improved vocal quality.

IT

### Amplify your voice

Use iRoar Mic as a public address system.

Position the mic facing towards you to project your voice loud and clear.

### Be heard clearly

Adjust the mic distance until you find the best sound. If you are close to the speaker, reduce the mic sensitivity for better performance.

Use the foam windscreen included for improved vocal quality.

CS

### Amplify your voice

Use iRoar Mic as a public address system.

Position the mic facing towards you to project your voice loud and clear.

### Be heard clearly

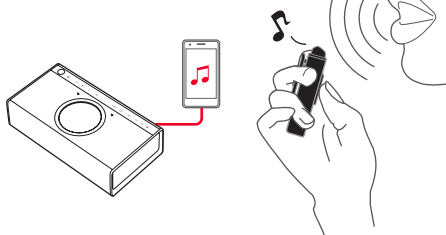
Adjust the mic distance until you find the best sound. If you are close to the speaker, reduce the mic sensitivity for better performance.

Use the foam windscreen included for improved vocal quality.

## I'D LIKE TO SING

### Sing along to songs played from speaker

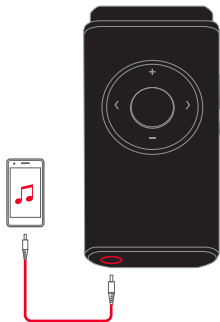
Play songs directly through the speaker via USB, line-in or a microSD card. Then, sing along!



### Sing along to songs broadcasted from your mic

Connect your music player and play music through the mic.

**Did you know?**  
Use a Karaoke mobile app to view lyrics while singing!



## I'D LIKE TO SING / I'D LIKE TO SING / I'D LIKE TO SING / I'D LIKE TO SING / I'D LIKE TO SING

FR

### Sing along to songs played from speaker

Play songs directly through the speaker via USB, line-in or a microSD card. Then, sing along!

### Sing along to songs broadcasted from your mic

Connect your music player and play your music through the mic.



#### Did you know?

Use a Karaoke mobile app to view lyrics while singing!

DE

### Sing along to songs played from speaker

Play songs directly through the speaker via USB, line-in or a microSD card. Then, sing along!

### Sing along to songs broadcasted from your mic

Connect your music player and play your music through the mic.



#### Did you know?

Use a Karaoke mobile app to view lyrics while singing!

ES

### Sing along to songs played from speaker

Play songs directly through the speaker via USB, line-in or a microSD card. Then, sing along!

### Sing along to songs broadcasted from your mic

Connect your music player and play your music through the mic.



#### Did you know?

Use a Karaoke mobile app to view lyrics while singing!

IT

### Sing along to songs played from speaker

Play songs directly through the speaker via USB, line-in or a microSD card. Then, sing along!

### Sing along to songs broadcasted from your mic

Connect your music player and play your music through the mic.



#### Did you know?

Use a Karaoke mobile app to view lyrics while singing!

CS

### Sing along to songs played from speaker

Play songs directly through the speaker via USB, line-in or a microSD card. Then, sing along!

### Sing along to songs broadcasted from your mic

Connect your music player and play your music through the mic.



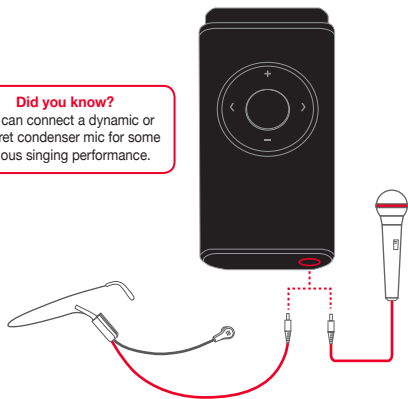
#### Did you know?

Use a Karaoke mobile app to view lyrics while singing!



## Did you know?

You can connect a dynamic or electret condenser mic for some serious singing performance.



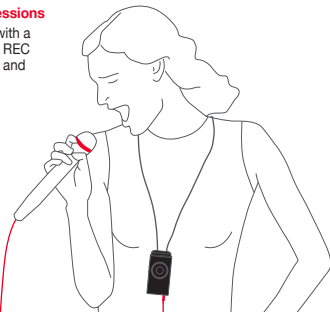
## Record your Karaoke sessions

When connected to iRoar with a microSD card inserted, tap REC on iRoar to start recording, and sing along.



## Did you know?

Use the lanyard to keep your mic close at hand while keeping your hands free.



FR



## Did you know?

You can connect a dynamic or electret condenser mic for some serious singing performance.

## Record your Karaoke sessions

When connected to iRoar with a microSD card inserted, tap REC on iRoar to start recording, and sing along.



## Did you know?

You can connect a dynamic or electret condenser mic for some serious singing performance.

DE



## Did you know?

You can connect a dynamic or electret condenser mic for some serious singing performance.

## Record your Karaoke sessions

When connected to iRoar with a microSD card inserted, tap REC on iRoar to start recording, and sing along.



## Did you know?

You can connect a dynamic or electret condenser mic for some serious singing performance.

ES



## Did you know?

You can connect a dynamic or electret condenser mic for some serious singing performance.

## Record your Karaoke sessions

When connected to iRoar with a microSD card inserted, tap REC on iRoar to start recording, and sing along.



## Did you know?

You can connect a dynamic or electret condenser mic for some serious singing performance.

IT



## Did you know?

You can connect a dynamic or electret condenser mic for some serious singing performance.

## Record your Karaoke sessions

When connected to iRoar with a microSD card inserted, tap REC on iRoar to start recording, and sing along.



## Did you know?

You can connect a dynamic or electret condenser mic for some serious singing performance.

CS



## Did you know?

You can connect a dynamic or electret condenser mic for some serious singing performance.

## Record your Karaoke sessions

When connected to iRoar with a microSD card inserted, tap REC on iRoar to start recording, and sing along.



## Did you know?

You can connect a dynamic or electret condenser mic for some serious singing performance.

## I'D LIKE TO MODIFY MY VOICE

### Amplify emotions

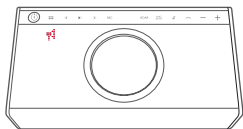
Add intensity to your vocal expression of emotions.

The 'Yell' emotion amplifies your voice and tone to sound like you're shouting.

Hold the Emotion Amplifier button while speaking to briefly activate. Release when done.

OR

Double-tap the button to activate the feature. Tap again to deactivate.



### Change voice on the fly

Pair your iRoar Mic and phone\* to the iRoar to enjoy different voice morph effects using the iRoar Megaphone mobile app<sup>†</sup>.

\* Music playback is disabled.

<sup>†</sup> Available on Apple® App Store<sup>SM</sup> and Google Play<sup>®</sup>.

## I'D LIKE TO MODIFY MY VOICE / I'D LIKE TO MODIFY MY VOICE / I'D LIKE TO MODIFY MY VOICE

FR

### Amplify emotions

Add intensity to your vocal expression of emotions.

The 'Yell' emotion amplifies your voice and tone to sound like you're shouting. Hold the Emotion Amplifier button while speaking to briefly activate. Release when done.

OR

Double-tap the button to activate the feature. Tap again to deactivate.

### Change voice on the fly

Pair the iRoar Mic and your phone\* to your iRoar to enjoy different voice morph effects using the iRoar Megaphone mobile app<sup>†</sup>.

\* Music playback is disabled.

<sup>†</sup> Available on Apple® App Store<sup>SM</sup> and Google Play<sup>®</sup>.

ES

### Amplify emotions

Add intensity to your vocal expression of emotions.

The 'Yell' emotion amplifies your voice and tone to sound like you're shouting. Hold the Emotion Amplifier button while speaking to briefly activate. Release when done.

OR

Double-tap the button to activate the feature. Tap again to deactivate.

### Change voice on the fly

Pair the iRoar Mic and your phone\* to your iRoar to enjoy different voice morph effects using the iRoar Megaphone mobile app<sup>†</sup>.

\* Music playback is disabled.

<sup>†</sup> Available on Apple® App Store<sup>SM</sup> and Google Play<sup>®</sup>.

DE

### Amplify emotions

Add intensity to your vocal expression of emotions.

The 'Yell' emotion amplifies your voice and tone to sound like you're shouting. Hold the Emotion Amplifier button while speaking to briefly activate. Release when done.

OR

Double-tap the button to activate the feature. Tap again to deactivate.

### Change voice on the fly

Pair the iRoar Mic and your phone\* to your iRoar to enjoy different voice morph effects using the iRoar Megaphone mobile app<sup>†</sup>.

\* Music playback is disabled.

<sup>†</sup> Available on Apple® App Store<sup>SM</sup> and Google Play<sup>®</sup>.

IT

### Amplify emotions

Add intensity to your vocal expression of emotions.

The 'Yell' emotion amplifies your voice and tone to sound like you're shouting. Hold the Emotion Amplifier button while speaking to briefly activate. Release when done.

OR

Double-tap the button to activate the feature. Tap again to deactivate.

### Change voice on the fly

Pair the iRoar Mic and your phone\* to your iRoar to enjoy different voice morph effects using the iRoar Megaphone mobile app<sup>†</sup>.

\* Music playback is disabled.

<sup>†</sup> Available on Apple® App Store<sup>SM</sup> and Google Play<sup>®</sup>.



## CS

**Amplify emotions**

Add intensity to your vocal expression of emotions.

The 'Yell' emotion amplifies your voice and tone to sound like you're shouting.

Hold the Emotion Amplifier button while speaking to briefly activate. Release when done.

OR

Double-tap the button to activate the feature. Tap again to deactivate.

**Change voice on the fly**

Pair the iRoar Mic and your phone\* to your iRoar to enjoy different voice morph effects using the iRoar Megaphone mobile app\*.

\* Music playback is disabled.

\* Available on Apple® App Store™ and Google Play®.

## SPECIFICATIONS

## LED BEHAVIOURS

<b>Bluetooth pairing</b>	Searching Connected	Blinking BLUE Steady BLUE
<b>Battery status</b>	Low battery	Blinking AMBER
<b>Battery charging</b>	Very low Low charge Good charge	Single blink AMBER Double blink AMBER Triple blink AMBER
<b>Mute</b>		Steady RED
<b>Error</b>		Alternating BLUE & RED

## SPECIFICATIONS

**Operating temperature range:** 0°C to 45°C

**Lithium-ion battery capacity:** 240 mAh

**Usage time:** 6-10 hours

**Charging time:** 2-3 hours

**Bluetooth version:** Bluetooth 2.1 + EDR (Enhanced Data Rate)

**Wireless operating range:** Up to 10 meters / 33 feet  
(Measured in open space. Walls and structures may affect range of device.)

**Supported external mic:** Dynamic and electret condenser mic (with 2V mic bias)

**Polar pattern:** Unidirectional

**Dimensions:** 70.5 x 34.8 x 20.3 mm

**Weight:** 0.03 kg

## PRODUCT REGISTRATION

Registering your product ensures you receive the most appropriate service and product support available. You can register your product during installation or at [register.creative.com](https://www.support.creative.com). Please note that your warranty rights are not dependent on registration.

## TECHNICAL &amp; CUSTOMER SUPPORT SERVICES

Go to [support.creative.com](https://www.support.creative.com) to resolve and troubleshoot technical queries at Creative's 24-hour self-help Knowledge Base. You can also find Customer Support Services and other helpful information here.

## OTHER INFORMATION

Supplementary documentation for this product includes a DoC and safety and regulatory information. These documents can be downloaded from the [support.creative.com](https://www.support.creative.com) site.

Warranty

**Warranty information is supplied with your product in a separate document.** Please keep your Proof of Purchase for the duration of the Warranty period.

**Keep this document for future reference.**

## SPECIFICATIONS

FR

### LED BEHAVIOURS

<b>Bluetooth pairing</b>	Searching Connected	Blinking BLUE Steady BLUE
<b>Battery status</b>	Low battery	Blinking AMBER
<b>Battery charging</b>	Very low Low charge Good charge	Single blink AMBER Double blink AMBER Triple blink AMBER
<b>Mute</b>		Steady RED
<b>Error</b>		Alternating BLUE & RED

## SPECIFICATIONS

**Operating temperature range:** 0°C to 45°C

**Lithium-ion battery capacity:** 240 mAh

**Usage time:** 6-10 hours

**Charging time:** 2-3 hours

**Bluetooth version:** Bluetooth 2.1 + EDR (Enhanced Data Rate)

**Wireless operating range:** Up to 10 meters / 33 feet

(Measured in open space. Walls and structures may affect range of device.)

**Supported external mic:** Dynamic and electret condenser mic (with 2V mic bias)

**Polar pattern:** Unidirectional

**Dimensions:** 70.5 x 34.8 x 20.3 mm

**Weight:** 0.03 kg

## PRODUCT REGISTRATION

Registering your product ensures you receive the most appropriate service and product support available. You can register your product during installation or at [register.creative.com](http://register.creative.com). Please note that your warranty rights are not dependent on registration.

## TECHNICAL & CUSTOMER SUPPORT SERVICES

Go to [support.creative.com](http://support.creative.com) to resolve and troubleshoot technical queries at Creative's 24-hour self-help Knowledge Base. You can also find Customer Support Services and other helpful information here.

## OTHER INFORMATION

Supplementary documentation for this product includes a DoC and safety and regulatory information. These documents can be downloaded from the [support.creative.com](http://support.creative.com) site.

Warranty

**Warranty information is supplied with your product in a separate document.** Please keep your Proof of Purchase for the duration of the Warranty period.

Keep this document for future reference.

## SPECIFICATIONS

DE

### LED BEHAVIOURS

<b>Bluetooth pairing</b>	Searching Connected	Blinking BLUE Steady BLUE
<b>Battery status</b>	Low battery	Blinking AMBER
<b>Battery charging</b>	Very low Low charge Good charge	Single blink AMBER Double blink AMBER Triple blink AMBER
<b>Mute</b>		Steady RED
<b>Error</b>		Alternating BLUE & RED

## SPECIFICATIONS

**Operating temperature range:** 0°C to 45°C

**Lithium-ion battery capacity:** 240 mAh

**Usage time:** 6-10 hours

**Charging time:** 2-3 hours

**Bluetooth version:** Bluetooth 2.1 + EDR (Enhanced Data Rate)

**Wireless operating range:** Up to 10 meters / 33 feet

(Measured in open space. Walls and structures may affect range of device.)

**Supported external mic:** Dynamic and electret condenser mic (with 2V mic bias)

**Polar pattern:** Unidirectional

**Dimensions:** 70.5 x 34.8 x 20.3 mm

**Weight:** 0.03 kg

## PRODUCT REGISTRATION

Registering your product ensures you receive the most appropriate service and product support available. You can register your product during installation or at [register.creative.com](http://register.creative.com). Please note that your warranty rights are not dependent on registration.

## TECHNICAL & CUSTOMER SUPPORT SERVICES

Go to [support.creative.com](http://support.creative.com) to resolve and troubleshoot technical queries at Creative's 24-hour self-help Knowledge Base. You can also find Customer Support Services and other helpful information here.

## OTHER INFORMATION

Supplementary documentation for this product includes a DoC and safety and regulatory information. These documents can be downloaded from the [support.creative.com](http://support.creative.com) site.

Warranty

**Warranty information is supplied with your product in a separate document.** Please keep your Proof of Purchase for the duration of the Warranty period.

Keep this document for future reference.

## SPECIFICATIONS

ES

### LED BEHAVIOURS

<b>Bluetooth pairing</b>	Searching Connected	Blinking BLUE Steady BLUE
<b>Battery status</b>	Low battery	Blinking AMBER
<b>Battery charging</b>	Very low Low charge Good charge	Single blink AMBER Double blink AMBER Triple blink AMBER
<b>Mute</b>		Steady RED
<b>Error</b>		Alternating BLUE & RED

## SPECIFICATIONS

**Operating temperature range:** 0°C to 45°C

**Lithium-ion battery capacity:** 240 mAh

**Usage time:** 6-10 hours

**Charging time:** 2-3 hours

**Bluetooth version:** Bluetooth 2.1 + EDR (Enhanced Data Rate)

**Wireless operating range:** Up to 10 meters / 33 feet

(Measured in open space. Walls and structures may affect range of device.)

**Supported external mic:** Dynamic and electret condenser mic (with 2V mic bias)

**Polar pattern:** Unidirectional

**Dimensions:** 70.5 x 34.8 x 20.3 mm

**Weight:** 0.03 kg

## PRODUCT REGISTRATION

Registering your product ensures you receive the most appropriate service and product support available. You can register your product during installation or at [register.creative.com](http://register.creative.com). Please note that your warranty rights are not dependent on registration.

## TECHNICAL & CUSTOMER SUPPORT SERVICES

Go to [support.creative.com](http://support.creative.com) to resolve and troubleshoot technical queries at Creative's 24-hour self-help Knowledge Base. You can also find Customer Support Services and other helpful information here.

## OTHER INFORMATION

Supplementary documentation for this product includes a DoC and safety and regulatory information. These documents can be downloaded from the [support.creative.com](http://support.creative.com) site.

Warranty

**Warranty information is supplied with your product in a separate document.** Please keep your Proof of Purchase for the duration of the Warranty period.

Keep this document for future reference.

## SPECIFICATIONS

IT

### LED BEHAVIOURS

<b>Bluetooth pairing</b>	Searching Connected	Blinking BLUE Steady BLUE
<b>Battery status</b>	Low battery	Blinking AMBER
<b>Battery charging</b>	Very low Low charge Good charge	Single blink AMBER Double blink AMBER Triple blink AMBER
<b>Mute</b>		Steady RED
<b>Error</b>		Alternating BLUE & RED

## SPECIFICATIONS

**Operating temperature range:** 0°C to 45°C

**Lithium-ion battery capacity:** 240 mAh

**Usage time:** 6-10 hours

**Charging time:** 2-3 hours

**Bluetooth version:** Bluetooth 2.1 + EDR (Enhanced Data Rate)

**Wireless operating range:** Up to 10 meters / 33 feet

(Measured in open space. Walls and structures may affect range of device.)

**Supported external mic:** Dynamic and electret condenser mic (with 2V mic bias)

**Polar pattern:** Unidirectional

**Dimensions:** 70.5 x 34.8 x 20.3 mm

**Weight:** 0.03 kg

## PRODUCT REGISTRATION

Registering your product ensures you receive the most appropriate service and product support available. You can register your product during installation or at [register.creative.com](http://register.creative.com). Please note that your warranty rights are not dependent on registration.

## TECHNICAL & CUSTOMER SUPPORT SERVICES

Go to [support.creative.com](http://support.creative.com) to resolve and troubleshoot technical queries at Creative's 24-hour self-help Knowledge Base. You can also find Customer Support Services and other helpful information here.

## OTHER INFORMATION

Supplementary documentation for this product includes a DoC and safety and regulatory information. These documents can be downloaded from the [support.creative.com](http://support.creative.com) site.

Warranty

**Warranty information is supplied with your product in a separate document.** Please keep your Proof of Purchase for the duration of the Warranty period.

Keep this document for future reference.

## SPECIFICATIONS

CS

### LED BEHAVIOURS

<b>Bluetooth pairing</b>	Searching Connected	Blinking BLUE Steady BLUE
<b>Battery status</b>	Low battery	Blinking AMBER
<b>Battery charging</b>	Very low Low charge Good charge	Single blink AMBER Double blink AMBER Triple blink AMBER
<b>Mute</b>		Steady RED
<b>Error</b>		Alternating BLUE & RED

## SPECIFICATIONS

**Operating temperature range:** 0°C to 45°C

**Lithium-ion battery capacity:** 240 mAh

**Usage time:** 6-10 hours

**Charging time:** 2-3 hours

**Bluetooth version:** Bluetooth 2.1 + EDR (Enhanced Data Rate)

**Wireless operating range:** Up to 10 meters / 33 feet

(Measured in open space. Walls and structures may affect range of device.)

**Supported external mic:** Dynamic and electret condenser mic (with 2V mic bias)

**Polar pattern:** Unidirectional

**Dimensions:** 70.5 x 34.8 x 20.3 mm

**Weight:** 0.03 kg

## PRODUCT REGISTRATION

Registering your product ensures you receive the most appropriate service and product support available. You can register your product during installation or at [register.creative.com](http://register.creative.com). Please note that your warranty rights are not dependent on registration.

## TECHNICAL & CUSTOMER SUPPORT SERVICES

Go to [support.creative.com](http://support.creative.com) to resolve and troubleshoot technical queries at Creative's 24-hour self-help Knowledge Base. You can also find Customer Support Services and other helpful information here.

## OTHER INFORMATION

Supplementary documentation for this product includes a DoC and safety and regulatory information. These documents can be downloaded from the [support.creative.com](http://support.creative.com) site.

Warranty	<b>Warranty information is supplied with your product in a separate document.</b> Please keep your Proof of Purchase for the duration of the Warranty period.
----------	---

Keep this document for future reference.

## Declaration of Conformity

According to R&TTE Directive (1999/5/EC)

**Manufacturer's Name :** Creative Technology Ltd

**Manufacturer's Address :** 31, International Business Park, #03-01 Creative Resource, Singapore 609921

**Product Name :** Creative iRoar Mic

**Product Model Number :** SB1670

**Intended Use :** Office and Home Usage

**Restrictive use :** Nil

To which this declaration relates are in conformity with the following standard(s):

**EMC: Class B**

EN 55013:2013

EN 55020:2007+A11:2011

EN 61000-3-2:2006 + A1:2009 + A2:2009

EN 61000-3-3:2013

EN 301 489-1 V1.9.2:2011

EN 301 489-17 V2.2.1:2012

**Health & Safety :**

EN 60065:2002 + A1:2006 + A11:2008 + A2:2010 + A12:2011

EN 62479:2010

**Radio :** EN 300 328 V1.8.1:2012

**RoHS :** EN 50581:2012

**Supplementary Information :**

• This product does not fall under the ErP scope.

Technical documentation for this product(s) is retained at the following address:

**Company Name :**

Creative Technology Ltd

**Company Address :**

31, International Business Park, #03-01

Creative Resource, Singapore 609921



**EN** Hereby, Creative Technology Ltd, declares that this USB sound card is in compliance with the essential requirements and other relevant provisions of Directive 1999/5/EC.

**FR** Par la présente Creative Technology Ltd, déclare que cette carte son USB est conforme aux exigences essentielles et aux autres dispositions pertinentes de la directive 1999/5/EC.

**DE** Hiermit erklärt Creative Technology Ltd dass sich Creative dieser / diese / dieses USB-Soundkarte in Übereinstimmung mit den grundlegenden Anforderungen und den anderen relevanten Vorschriften der Richtlinie 1999/5/EG befindet. (BMWV).

**ES** Pormedio de la presente Creative Technology Ltd, declara que esta tarjeta de sonido USB cumple con requisitos esenciales y/oa lesquiera otras disposiciones aplicables o exigibles de la Directiva 1999/5/CE.

**IT** Con la presente Creative Technology Ltd, dichiara che questa scheda audio USB è conforme ai requisiti essenziali ed alle altre disposizioni pertinenti stabilite dalla direttiva 1999/5/CE.

**EN**

The use of the WEEE Symbol indicates that this product may not be treated as household waste. By ensuring this product is disposed of correctly, you will help protect the environment. For more detailed information about the recycling of this product, please contact your local authority, your household waste disposal service provider or the shop where you purchase the product.



**Batteries Directive 2006/66/EC  
FOR INTEGRATED BATTERY**

This product contains a Lithium ion/polymer battery that should only be removed by an authorized recycling centre. By recycling this product at your local authorized recycling centre or the place of purchase, the battery will be removed and recycled separately.

**FR**

L'utilisation du symbole DEEE indique que ce produit ne peut être traité comme déchet ménager. Engageant la mise au rebut appropriée de ce produit, vous contribuez à préserver l'environnement. Pour de plus amples informations sur le recyclage de ce produit, veuillez contacter vos autorités locales, votre fournisseur de services de mise au rebut des déchets ménagers ou le magasin où vous avez acheté le produit.



**Directive sur les piles 2006/66/CE  
PILES INTEGRESSES**

Ce produit peut contenir une pile lithium-ion/polymère dont la dépose doit uniquement être effectuée par un centre de recyclage agréé. En confiant ce produit au centre de recyclage agréé local ou en le rapportant au magasin d'achat, vous avez la garantie que la pile sera déposée et recyclée de façon séparée.

**DE**

Die Verwendung des WEEE-Symbols gibt an, dass dieses Produkt nicht als Haushaltsmüll betrachtet werden kann. Durch die korrekte Entsorgung dieses Produktes tragen Sie zum Schutz der Umwelt bei. Ausführliche Informationen zum Recycling des Produktes erhalten Sie über die örtlichen Behörden, die für Sie zuständige Müllabfuhr oder das Geschäft, in dem Sie das Produkt erworben haben.



**Batterierichtlinie 2006/66/EG  
FÜR INTEGRIERTE BATTERIEN**

Dieses Produkt kann Lithium-Ion/Polymer-Batterien enthalten, die ausschließlich durch Mitarbeiter einer zugelassenen Recycling-Anlage entfernt werden dürfen. Wird das Produkt in Ihrer lokal zugelassenen Recycling-Anlage oder bei Ihrem Händler entsorgt, werden die Batterien entfernt und separat recyclet.

**ES**

El símbolo RAEE indica que el producto no se puede eliminar como cualquier otro residuo doméstico. Si garantiza la eliminación correcta del producto, ayudará a proteger el medio ambiente. Para obtener más información acerca del reciclaje de este producto, póngase en contacto con la autoridad local, el proveedor de servicios de eliminación de residuos domésticos o con la tienda en la que adquirió el producto.



**Directiva sobre pilas 2006/66/CE  
PARA PILAINTEGRADA**

Este producto puede contener una pila de ión litio/polímero que debe extraerse en un centro de reciclaje autorizado. Al reciclar este producto en el centro de reciclaje autorizado local o en el lugar donde la adquirió, la pila se extraerá y se reciclará por separado.

**IT**

L'uso del simbolo RAEE indica che questo prodotto non deve trattato come un rifiuto domestico. Assicurandosi che questo prodotto sia smaltito correttamente, si contribuisce a proteggere l'ambiente. Per informazioni più dettagliate sul riciclaggio di questo prodotto, contattare l'autorità locale, l'assistenza per lo smaltimento dei rifiuti domestici oppure il negozio presso cui è stato acquistato il prodotto.



**Direttiva sulle batterie 2006/66/CE  
PER BATTERIE INTEGRATE**

Il prodotto può contenere una batteria agli ioni di litio/polimeri che può essere rimossa solo presso un centro di riciclaggio autorizzato. Presso il centro autorizzato al riciclaggio o presso il rivenditore, la batteria verrà rimossa e riciclata separatamente.

**EN**

Detailed instructions on removal of integrated battery can be found at [www.creative.com](http://www.creative.com), these instructions are meant strictly for independently qualified professionals.

**FR**

Des instructions détaillées sur le démontage de la batterie intégrée peuvent être trouvées à [www.creative.com](http://www.creative.com), ces instructions sont strictement destinées à des professionnels indépendants qualifiés.

**DE**

Eine detaillierte Anleitung zum Ausbau des integrierten Akkus finden Sie unter [www.creative.com](http://www.creative.com), diese Anleitung richtet sich ausschließlich an unabhängige, qualifizierte Techniker.

**ES**

Instrucciones detalladas sobre la remoción de la batería integrada pueden ser encontradas en [www.creative.com](http://www.creative.com), estas instrucciones se destinan exclusivamente a profesionales de calificados de forma independiente.

**IT**

Istruzioni dettagliate sulla rimozione della batteria integrata possono essere trovate su [www.creative.com](http://www.creative.com). Le presenti istruzioni sono rivolte esclusivamente a professionisti qualificati.

Complies with  
IDA Standards  
DB00148

Copyright © 2015 Creative Technology Ltd. All rights reserved. Creative, the Creative logo, iRoar, the iRoar logo and Sound Blaster are trademarks or registered trademarks of Creative Technology Ltd. in the United States and/or other countries. Apple is a trademark of Apple Inc., registered in the U.S. and other countries. App Store is a service mark of Apple Inc. Google Play is a trademark of Google Inc. The *Bluetooth*® word mark and logos are registered trademarks owned by *Bluetooth* SIG, Inc. and any use of such marks by Creative Technology Ltd is under license. Other trademarks and trade names are those of their respective owners. All specifications are subject to change without prior notice.

Copyright © 2015 Creative Technology Ltd. All rights reserved. Creative, the Creative logo, iRoar, the iRoar logo and Sound Blaster are trademarks or registered trademarks of Creative Technology Ltd. in the United States and/or other countries. Apple is a trademark of Apple Inc., registered in the U.S. and other countries. App Store is a service mark of Apple Inc. Google Play is a trademark of Google Inc. The *Bluetooth*® word mark and logos are registered trademarks owned by *Bluetooth* SIG, Inc. and any use of such marks by Creative Technology Ltd is under license. Other trademarks and trade names are those of their respective owners. All specifications are subject to change without prior notice.

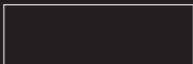
Copyright © 2015 Creative Technology Ltd. All rights reserved. Creative, the Creative logo, iRoar, the iRoar logo and Sound Blaster are trademarks or registered trademarks of Creative Technology Ltd. in the United States and/or other countries. Apple is a trademark of Apple Inc., registered in the U.S. and other countries. App Store is a service mark of Apple Inc. Google Play is a trademark of Google Inc. The *Bluetooth*® word mark and logos are registered trademarks owned by *Bluetooth* SIG, Inc. and any use of such marks by Creative Technology Ltd is under license. Other trademarks and trade names are those of their respective owners. All specifications are subject to change without prior notice.

Copyright © 2015 Creative Technology Ltd. All rights reserved. Creative, the Creative logo, iRoar, the iRoar logo and Sound Blaster are trademarks or registered trademarks of Creative Technology Ltd. in the United States and/or other countries. Apple is a trademark of Apple Inc., registered in the U.S. and other countries. App Store is a service mark of Apple Inc. Google Play is a trademark of Google Inc. The *Bluetooth*® word mark and logos are registered trademarks owned by *Bluetooth* SIG, Inc. and any use of such marks by Creative Technology Ltd is under license. Other trademarks and trade names are those of their respective owners. All specifications are subject to change without prior notice.

Copyright © 2015 Creative Technology Ltd. All rights reserved. Creative, the Creative logo, iRoar, the iRoar logo and Sound Blaster are trademarks or registered trademarks of Creative Technology Ltd. in the United States and/or other countries. Apple is a trademark of Apple Inc., registered in the U.S. and other countries. App Store is a service mark of Apple Inc. Google Play is a trademark of Google Inc. The *Bluetooth*® word mark and logos are registered trademarks owned by *Bluetooth* SIG, Inc. and any use of such marks by Creative Technology Ltd is under license. Other trademarks and trade names are those of their respective owners. All specifications are subject to change without prior notice.

Copyright © 2015 Creative Technology Ltd. All rights reserved. Creative, the Creative logo, iRoar, the iRoar logo and Sound Blaster are trademarks or registered trademarks of Creative Technology Ltd. in the United States and/or other countries. Apple is a trademark of Apple Inc., registered in the U.S. and other countries. App Store is a service mark of Apple Inc. Google Play is a trademark of Google Inc. The *Bluetooth*® word mark and logos are registered trademarks owned by *Bluetooth* SIG, Inc. and any use of such marks by Creative Technology Ltd is under license. Other trademarks and trade names are those of their respective owners. All specifications are subject to change without prior notice.

Serial No / Numéro de série / Seriennummer / Número de serie /  
Numero di serie / 序列号



- EN** You need to provide this serial number if you require technical support for this product.
- FR** Vous devez fournir ce numéro de série si vous avez besoin d'assistance technique pour ce produit.
- DE** Diese Seriennummer wird im Bedarfsfall vom technischen Kundendienst für das Produkt abgefragt.
- ES** Si necesita asistencia técnica para este producto, tendrá que proporcionar este número de serie.
- IT** Per assistenza tecnica su questo prodotto, è necessario fornire questo numero di serie.
- CS** 今后若需要技术支持服务，您还需提供此序列号。