

User's Guide

Creative Sound Blaster Wireless Music

Information in this document is subject to change without notice and does not represent a commitment on the part of Creative Technology Ltd. No part of this manual may be reproduced or transmitted in any form or by any means, electronic or mechanical, including photocopying and recording, for any purpose without the written permission of Creative Technology Ltd. The software described in this document is furnished under a license agreement and may be used or copied only in accordance with the terms of the license agreement. It is against the law to copy the software on any other medium except as specifically allowed in the license agreement. The licensee may make one copy of the software for backup purposes only.

The Software License Agreement is found in a separate folder on the Installation CD.

Copyright © 2003 by Creative Technology Ltd. All rights reserved.

Version 1.0

August 2003

The Creative logo, the Sound Blaster logo, Blaster, I-trigue and Creative MediaSource are trademarks or registered trademarks of Creative Technology Ltd. in the United States and/or other countries. Microsoft, MS-DOS, Windows and the Windows logo are registered trademarks of Microsoft Corporation. Intel and Pentium are registered trademarks of Intel Corporation. All other products are trademarks or registered trademarks of their respective owners. All specifications are subject to change without prior notice. Actual contents may differ slightly from those pictured.

CREATIVE

Network

BLASTER

Contents

Contents

1 Introduction

Package Contents	1-1
Minimum System Requirements	1-1
Model Number, Serial Number and MAC Address	1-1
Product Registration	1-2
Technical Support and Warranty	1-2
Document Conventions	1-2

2 Your Sound Blaster Wireless Music At A Glance

Wireless Receiver	2-1
Attaching the stand (optional)	2-3
Remote Control	2-4

3 Getting Started

Step 1: Install Software	3-1
Step 2: Add tracks to PC Music Library	3-4
Step 3: Set up Wireless Receiver	3-5
Step 4: Play Music	3-10

4 Using Your Remote Control

Selecting Menu Options	4-1
Using Multiple Wireless Receivers	4-1
Playing Music	4-2
Playing a Favorite Playlist	4-2
Playing a Smart Playlist	4-2

Playing a Playlist	4-3
Playing tracks in the Now Playing List	4-3
Playing tracks from an artist	4-3
Playing tracks from an album	4-3
Playing tracks from a genre	4-4
Playing a track	4-4
Playing all tracks	4-4
Viewing the Now Playing List	4-5
Setting Play Modes	4-5
Viewing Configuration Information	4-5
Checking Battery Status	4-6

5 Configuring Settings

Configuring Your Wireless Receiver	5-1
Configuring Smart Playlist preferences	5-2
Configuring FAVORITES buttons	5-2

Appendixes

A About Music Files

Overview	A-1
Downloading from the Internet	A-1
"Ripping" Audio CDs	A-1

B Frequently Asked Questions

Installation and Configuration	B-1
Operation	B-3

Speakers	B-7
Updates	B-7
C Maintenance and Safety Advice	
Wireless Receiver and Remote Control	C-1
Batteries	C-1
D Technical Specifications	
Wireless Receiver	D-1
Remote Control	D-2
E Glossary	

CREATIVE

Network

BLASTER

1

Introduction

Introduction

Thank you for choosing the Creative Sound Blaster Wireless Music.

Package Contents

The following items are included in your package:

- Wireless Receiver and stand
- Remote Control and three AA batteries
- Power adapter
- USB cable
- RCA-to-miniplug cable
- Quick Start leaflet
- Installation CD

Minimum System Requirements

- Microsoft® Windows® 98 Second Edition (SE), Windows 2000, Windows Millennium Edition (Me) or Windows XP
- Intel® Pentium® II 350 MHz or equivalent
- 128 MB RAM
- 100 MB of free hard disk space (more space is required for storing music files)
- CD-ROM/DVD-ROM drive for software installation
- Available USB port for installation and configuration
- Network interface to an IEEE 802.11b or 802.11g compatible wireless network with a wireless router or access point. Network interface can be a built-in, PCI, USB or PCMCIA interface that supports 10/100 BaseT (Cat-5), 802.11b or 802.11g networks.

Model Number, Serial Number and MAC Address

You will find a model number, a serial number and a MAC address on your Wireless Receiver.

You will need to provide model and serial numbers when contacting Technical Support. Additionally, you will need the MAC address if you have enabled the MAC address security feature on your wireless network. Refer to the User's Guide of your wireless router or access point to learn how to use the MAC address security feature.

Product Registration

Enjoy a host of benefits by registering your product during installation, or at www.creative.com/register. Benefits include:

- Service and product support from Creative
- Exclusive updates on promotions and events

Technical Support and Warranty

Technical Support information can be found on the Installation CD.

d:\support\<<language>\support.pdf

Warranty information can be found on the Installation CD as well.

d:\warranty\<<region>\<language>\warranty.pdf

(replace **d:** with the drive letter of your CD-ROM/DVD-ROM drive, **<region>** with the geographical region you are in, and **<language>** with the language that the document is in)

Please keep your Proof of Purchase for the duration of the Warranty period.

Document Conventions

This User's Guide uses the following icons to highlight useful or urgent information.



Tip. This tells you about short cuts or hints relating to a feature.



Note. This highlights additional or important information about a feature.



Caution! This highlights proper usage of your product. Use this information to avoid risky situations.



Warning! This warns you of possible hazards to yourself or your product, that may result in injury or damage.

CREATIVE

Network

BLASTER

2

Your Sound Blaster Wireless
Music At A Glance

Your Sound Blaster Wireless Music At A Glance

Wireless Receiver



Figure 2-1: Front and rear views of the Wireless Receiver

1	FIND REMOTE button	<ul style="list-style-type: none"> ○ Activates a beeping sound from the Remote Control. Use this feature if you need to locate your Remote Control ○ Assigns a Remote Control to a Wireless Receiver. This lets you use a Remote Control with different Wireless Receivers. See "Using Your Remote Control" on page 4-1 for more information.
2	Light Emitting Diode (LED)	<ul style="list-style-type: none"> ○ Left (or top) LED lights up green when your Wireless Receiver is connected to a power source and powered on, and lights up red when connected to a power source and on standby. ○ Right (or bottom) LED lights up green during playback. It flashes green when connecting to the SB Wireless Music Server, flashes amber when you are configuring settings, and flashes red when booting up.
3	USB port	<ul style="list-style-type: none"> ○ Connects to your computer's USB port using the supplied USB cable when your are installing and configuring the Wireless Receiver
4	OPTICAL OUT connector	<ul style="list-style-type: none"> ○ Connects to the optical input of speakers or a home stereo system (both available separately)
5	LINE OUT jacks	<ul style="list-style-type: none"> ○ Connects to the Front Left and Front Right inputs of speakers or a home stereo system (both available separately)
6	6V AC IN connector	<ul style="list-style-type: none"> ○ Connects to a power outlet using the supplied power adapter

**Attaching the
stand (optional)**



Figure 2-2: Attaching the stand to your Wireless Receiver (optional)

Remote Control

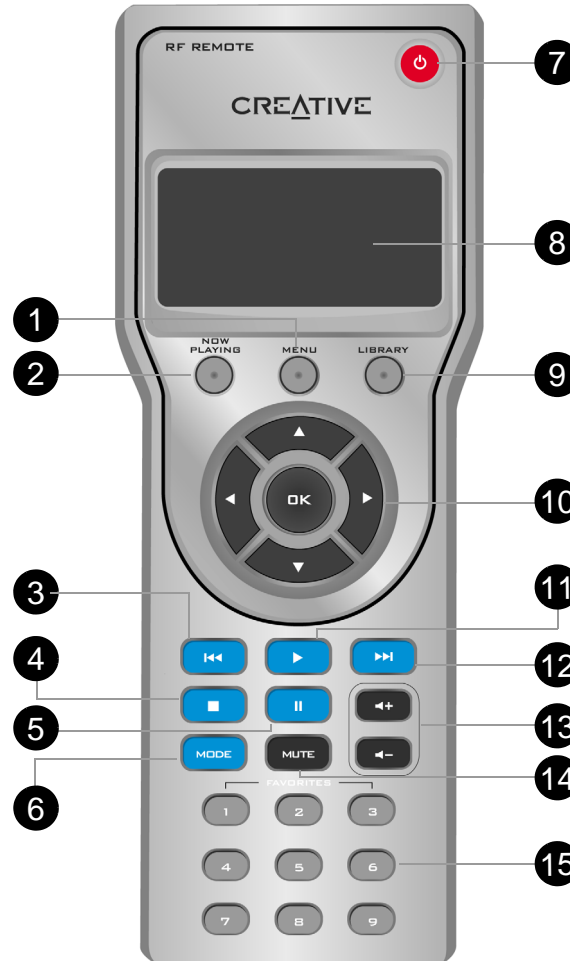







Figure 2-3: Front view of the Remote Control

1	MENU button	○ Displays main menu on the LCD
2	NOW PLAYING button	○ Displays the track details of the currently playing track. If nothing is playing, or the NOW PLAYING button is pressed a second time, the Now Playing Track List is displayed.
3	Previous button	○ Press to go to the previous track
4	Stop button	○ Press to stop playback ○ Press and hold to delete all tracks in the Now Playing List
5	Pause button	○ Pauses and resumes playback
6	MODE button	○ Toggles between Normal , Shuffle  , Repeat All  and Shuffle/Repeat All   play modes ○ Assigns a Remote Control to a Wireless Receiver. This lets you a Remote Control with different Wireless Receivers. See "Using Your Remote Control" on page 4-1 for more information.
7	Power button	○ Turns on your Wireless Receiver or sets it to standby
8	Liquid Crystal Display (LCD)	○ Lets you view the MP3 and WMA files in the PC Music Library
9	LIBRARY button	○ Displays PC Music Library menu on the LCD

10	Navigation buttons	<ul style="list-style-type: none"> ○ Up ▲ and Down ▼ buttons scroll through menu options on the LCD ○ Right ► button selects a highlighted menu option, or shows a list of additional options for the highlighted menu option ○ Left ◀ button returns to the previous menu ○ OK button selects a highlighted menu option. If the menu option is an artist, album, track or playlist, it is added to the Now Playing List.
11	Play button	<ul style="list-style-type: none"> ○ Press to start playback ○ Press and hold to add highlighted menu option to the Now Playing List
12	Next button	<ul style="list-style-type: none"> ○ Press to go to the next track
13	Volume buttons	<ul style="list-style-type: none"> ○ Increases or decreases playback volume
14	MUTE button	<ul style="list-style-type: none"> ○ Mutes the volume.  appears on the LCD when the volume is muted.
15	FAVORITES buttons	<ul style="list-style-type: none"> ○ Play back Favorite Playlists that you have assigned to these buttons. You can use Wireless Music Application to assign Favorite Playlists. For more information, see "Configuring FAVORITES buttons" on page 5-2.

LCD overview



CREATIVE

Network

BLASTER

3

Getting Started

Getting Started

DO NOT connect your Wireless Receiver to your computer until you have installed the software.

Step 1: Install Software



- If your wireless router or access can be configured as a DHCP server feature, you should enable this feature. This will make it easy to add other devices (for example, another Wireless Receiver) to your wireless network.
- If you are setting up multiple Wireless Receivers, make sure you set them up one at a time.

1. Turn on your computer and make sure your wireless router or access point is set up and working properly.
2. Insert the Installation CD into your CD-ROM/DVD-ROM drive. The disc supports Windows Autoplay mode and starts running automatically. If not, you need to enable the Windows auto-insert notification feature for your CD-ROM/DVD-ROM drive. For more information, see "Installation and Configuration" on page B-1.
3. **For Windows XP only:** When the Hardware Installation error message appears, click the **Continue Anyway** button.



Figure 3-1: Windows XP Hardware Installation error message



If your network is WEP enabled, make sure it is in **Open** mode. **Share Key** mode is *not* supported by Sound Blaster Wireless Music.

4. If yours is the only wireless network operating in the vicinity, the software will automatically detect and connect to it. If not, the **SB Wireless Music Configuration – Network** dialog box will appear. Select a network from the list available networks, and click the **Next** button.
If your network is not listed, click the **Scan** button to refresh the list of available networks, or select the **Use this SSID** option and enter the SSID of the network you want to connect to.
5. If the selected network is WEP encrypted, enter the encryption information in the **SB Wireless Music Configuration – Encryption** dialog box, and click the **Next** button. Refer to the User’s Guide of your wireless router or access point to learn how to check your network’s encryption information.
6. In the **SB Wireless Music Configuration – IP Settings** dialog box, we recommend that you select the **Obtain an IP address automatically** option. Only select the **Use the following IP address** option if you are familiar with setting up a static IP address.
7. Click the **Next** button.
8. Click the **OK** button. If the settings you have selected are incompatible with your network, you will return to the first setup page so that you can select the correct settings.
9. Follow the onscreen instructions to complete the installation, and restart your computer when you are prompted to do so.

10. When your computer restarts, connect your Wireless Receiver to your computer's USB port using the supplied USB cable when you are prompted to do so.

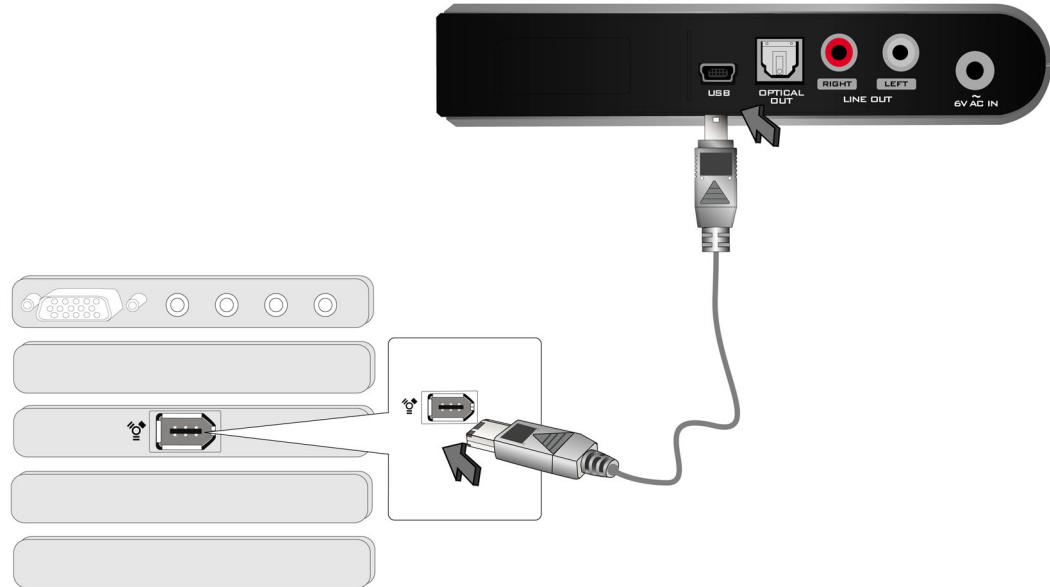


Figure 3-2: Connecting your Wireless Receiver to your computer's USB port

Step 2: Add tracks to PC Music Library

1. Creative MediaSource Player/Organizer should automatically launch when your computer restarts after installation. To manually launch Creative MediaSource Player/Organizer, double-click the **Creative MediaSource Player/Organizer** icon (Figure 3-3) on your desktop.



Figure 3-3

2. If you are not already in Creative MediaSource Organizer, click the **Player/Organizer View** button.
3. On the **Task bar**, click the **Import** button, and select **Import Tracks**. The **Import Wizard** dialog box appears.
4. In the **My Computer:** panel, locate the ripped or downloaded music files that you want to add to the PC Music Library.
5. Click a folder to display the tracks in it. The list of tracks is displayed in the panel beneath the **My Computer:** panel.
6. To add a track, select it from the panel beneath the **My Computer:** panel and click the **Add File->** button.
7. To add a folder, select it from the My Computer: panel and click the **Add Folder** button.
A list of tracks is displayed in the **Files to be imported** panel.
8. Click the **Continue** button.
9. Follow the onscreen instructions to finish adding tracks to the PC Music Library.

For information on ripping and downloading music files, see "About Music Files" on page A-1.

Step 3: Set up Wireless Receiver

1. Decide where you would like to place your Wireless Receiver. For optimum performance, make sure your Wireless Receiver is placed on a flat surface that is at least 50 cm (20 inches) from the floor, and where there is minimum obstruction between your Wireless Receiver and your wireless router or access point.
2. Connect your Wireless Receiver to speakers or a home stereo system (both available separately).

Connecting to speakers

You can either connect speakers to the **LINE OUT** jacks or the **OPTICAL OUT** connector of your Wireless Receiver.

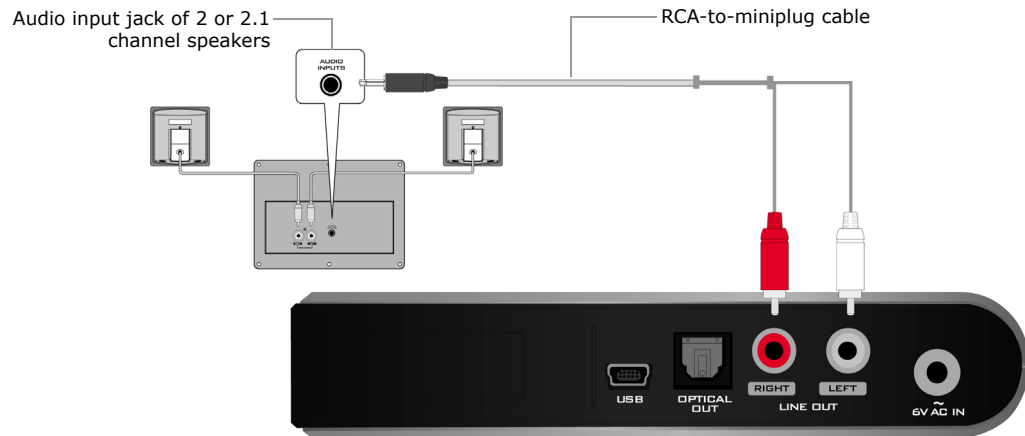


Figure 3-4: Connecting 2.1 channel speakers to the LINE OUT jacks of your Wireless Receiver

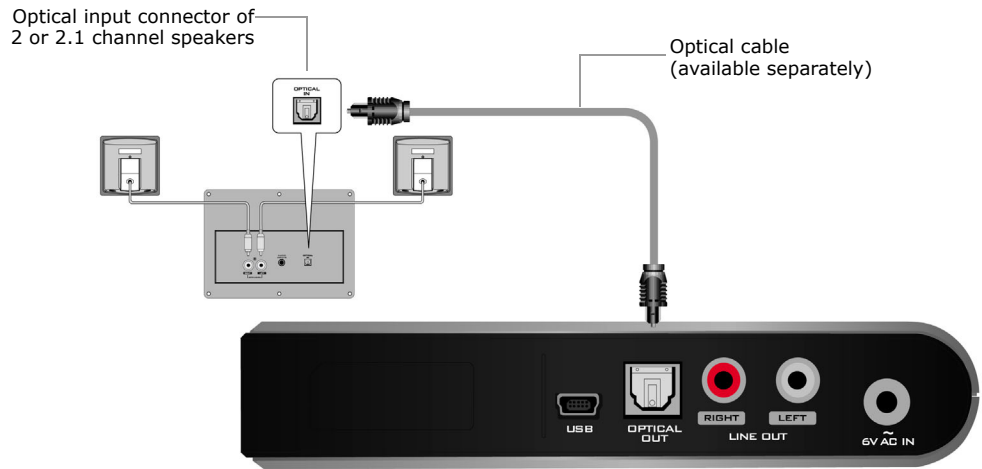


Figure 3-5: Connecting 2.1 channel speakers to the OPTICAL OUT connector of your Wireless Receiver



- On your home stereo system, connect the RCA cable to either the CD inputs or the auxiliary inputs (or other inputs if these are unavailable).
- When you turn on your home stereo system, make sure that the stereo receiver or AV Amplifier is in the correct input mode. For example, make sure you select auxiliary mode if your Wireless Receiver is connected to the auxiliary inputs.

Connecting to a home stereo system

You can either connect a home stereo system to the **LINE OUT** jacks or the **OPTICAL OUT** connector of your Wireless Receiver.

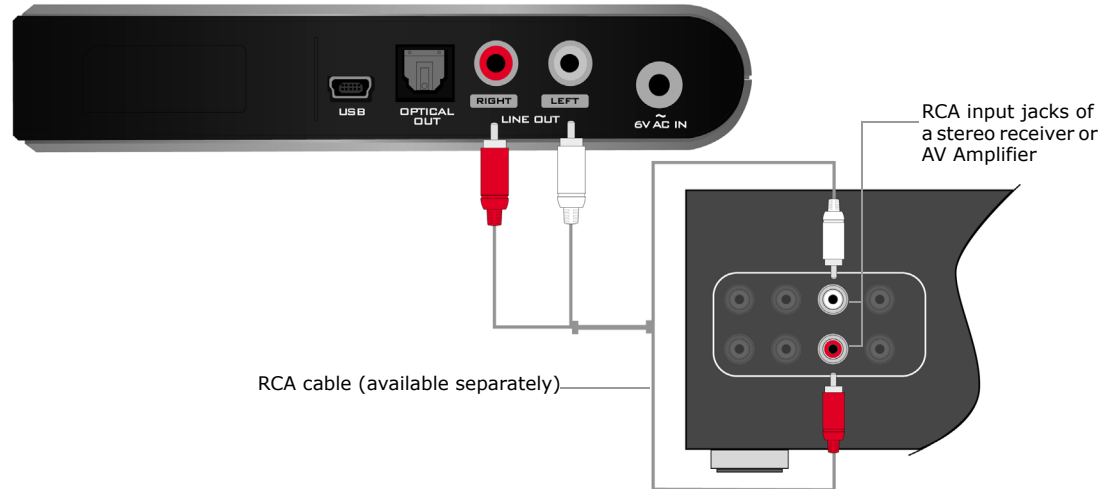


Figure 3-6: Connecting a home stereo system to the LINE OUT jacks of your Wireless Receiver

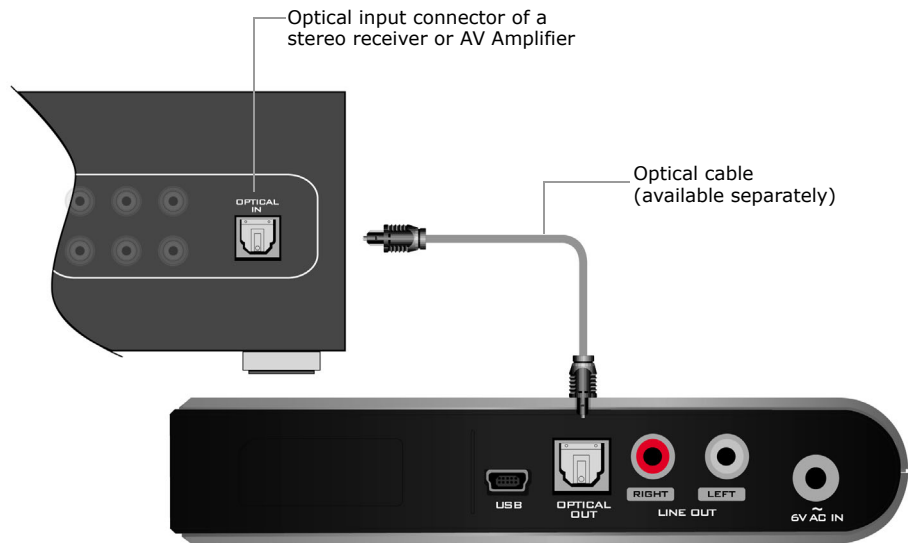


Figure 3-7: Connecting a home stereo system to the OPTICAL OUT connector of your Wireless Receiver

3. Connect your Wireless Receiver to a power outlet using the supplied power adapter, and turn on the power outlet if necessary.



Figure 3-8: Connecting your Wireless Receiver to a power outlet

Step 4: Play Music



Make sure your Remote Control is no more than 10 meters (33 feet) when you set up and use your Remote Control.

1. Insert three AA batteries into the Remote Control..

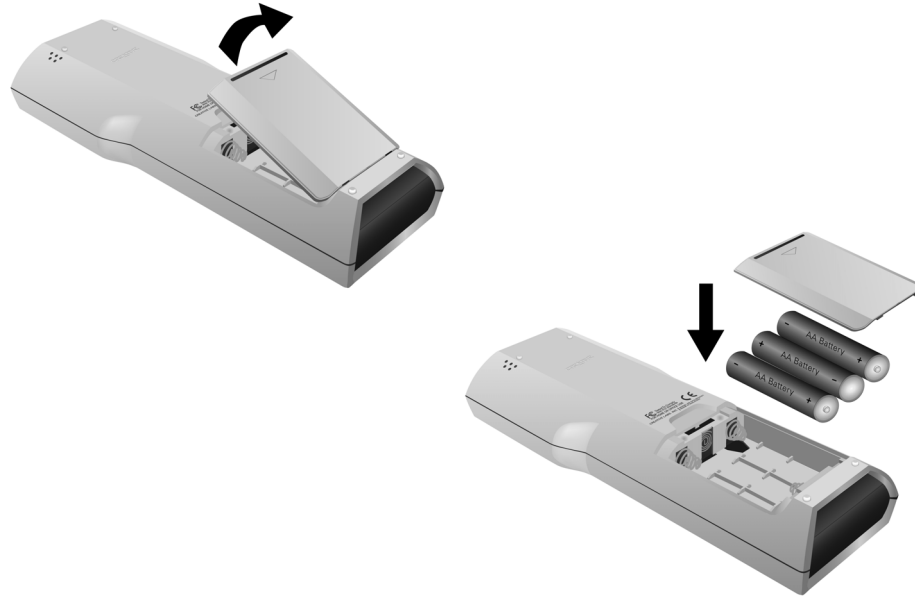


Figure 3-9: Inserting batteries into the Remote Control

2. Press the **Power** button on your Remote Control.
Your Remote Control is automatically assigned to your Wireless Receiver if you have only one Wireless Receiver installed on your wireless network. If not, you will need to manually assign the Remote Control to the Wireless Receiver that you are installing. For more information, see "To assign a Remote Control to a Wireless Receiver" on page 4-1
3. When the main menu appears on the LCD, click the **Play** button on your Remote Control to start playing tracks in the PC Music Library.

4. Press the **Volume** buttons on your Remote Control to increase or decrease the volume.

For more information about using the Remote Control, see "Using Your Remote Control" on page 4-1.

CREATIVE

Network

BLASTER

4

Using Your Remote Control

Using Your Remote Control

Selecting Menu Options

You can use the Navigation buttons to scroll and select menu options. For example, if you are in the Now Playing List menu:

1. Press the **Up ▲** and **Down ▼** buttons to scroll up and down the menu.
2. Press the **Right ►** button or **OK** button to select a highlighted menu option, or show a list of additional options for the highlighted menu option.
3. Press the **Left ◀** button to return to the previous menu.



Using Multiple Wireless Receivers

You can use up to four Wireless Receivers on a wireless network. If you are using multiple Wireless Receivers, you can use one Remote Control to control all the Wireless Receivers. However, your Remote Control can only control one Wireless Receiver at a time. To select the Wireless Receiver that your Remote Control controls, you need to assign the Remote Control to the Wireless Receiver that you want to control

To assign a Remote Control to a Wireless Receiver

1. Press and hold the **MODE** button on the Remote Control until the LED on the Wireless Receiver starts flashing. This may take about 5 seconds.
2. Press the **FIND REMOTE** button on the Wireless Receiver. The Remote Control is now assigned to this Wireless Receiver. Repeat this procedure to assign the Remote Control to another Wireless Receivers.

Playing Music

Playing a Favorite Playlist

The easiest way to play a Favorite Playlist is to press one of the **FAVORITES** buttons.

Alternatively, you can select a Favorite Playlist from the Favorite Playlists menu.

To select a Favorite Playlist from the Favorite Playlists menu

1. Press the **MENU** button.
2. Scroll to the **Favorite Playlists** option and press the **Right ►** button or **OK** button.
3. Scroll to a Favorite Playlist and press the **Play** button to start play back, or press and hold the **Play** button to add the tracks in the selected Favorite Playlist to the Now Playing List.
To view the tracks listed under the highlighted Favorite Playlist, press the **Right ►** button or **OK** button.

You can use the SB Wireless Music Application to assign Favorite Playlists (see "Configuring FAVORITES buttons" on page 5-2). For more information about using the SB Wireless Music Application, refer to its online help.

Playing a Smart Playlist



A different playlist is created each time Smart Playlist is selected.

1. Press the **MENU** button.
2. Scroll to the **Music Library** option and press the **Right ►** button or **OK** button.
3. Scroll to the **Smart Playlist** option and press the **Right ►** button or **OK** button.
4. Scroll to a Smart Playlist and press the **Play** button to start play back, or press and hold the **Play** button to add the tracks in the selected Smart Playlist to the Now Playing List.
To view the tracks listed under the highlighted Smart Playlist, press the **Right ►** button or **OK** button.

You can use the SB Wireless Music Application to configure Smart Playlist preferences (see "Configuring Smart Playlist preferences" on page 5-2). For more information about using the SB Wireless Music Application, refer to its online help.

Playing a Playlist

1. Press the **MENU** button.
2. Scroll to the **Music Library** option and press the **Right ►** button or **OK** button.
3. Scroll to the **Playlist** option and press the **Right ►** button or **OK** button.
4. Scroll to a playlist and press the **Play** button to start play back, or press and hold the **Play** button to add the tracks in the selected playlist to the Now Playing List.

To view the tracks listed under the highlighted playlist, press the **Right ►** button or **OK** button.

You can use the SB Wireless Music Application to create playlists. For more information about using the SB Wireless Music Application, refer to its online help.

Playing tracks in the Now Playing List

1. Press the **Play** button to start playing all tracks in the Now Playing List.
2. If the Now Playing List is empty, the Favorite Playlist assigned to the first **FAVORITES** button plays by default.

Playing tracks from an artist

1. Press the **MENU** button.
2. Scroll to the **Music Library** option and press the **Right ►** button or **OK** button.
3. Scroll to the **Artist** option and press the **Right ►** button or **OK** button.
4. Scroll to the first letter of the artist you want to play and press the **Right ►** button or **OK** button. If the artist starts with a number or punctuation mark, scroll to **0-9** and press the **Right ►** button or **OK** button.

5. Scroll to an artist and press the **Play** button to start play back, or press and hold the **Play** button to add all tracks from the selected artist to the Now Playing List.

To view the albums listed under the highlighted artist, press the **Right ►** button or **OK** button.

Playing tracks from an album

1. Press the **MENU** button.
2. Scroll to the **Music Library** option and press the **Right ►** button or **OK** button.
3. Scroll to the **Album** option and press the **Right ►** button or **OK** button.
4. Scroll to the first letter of the album you want to play and press the **Right ►** button or **OK** button. If the album starts with a number or punctuation mark, scroll to **0-9** and press the **Right ►** button or **OK** button.
5. Scroll to an album and press the **Play** button to start play back, or press and hold the **Play** button to add the tracks from the selected album to the Now Playing List.

To view the tracks listed under the highlighted album, press the **Right ►** button or **OK** button.

Playing tracks from a genre

1. Press the **MENU** button.
2. Scroll to the **Music Library** option and press the **Right ►** button or **OK** button.
3. Scroll to the **Genre** option and press the **Right ►** button or **OK** button.
4. Scroll to a genre and press the **Play** button to start play back, or press and hold the **Play** button to add the tracks from the selected genre to the Now Playing List.

To view the artists listed under the highlighted genre, press the **Right ►** button or **OK** button.

Playing a track

1. Press the **MENU** button.
2. Scroll to the **Music Library** option and press the **Right ►** button or **OK** button.
3. Scroll to the **All Tracks** option and press the **Right ►** button or **OK** button.
4. Scroll to the first letter of the track you want to play and press the **Right ►** button or **OK** button. If the track starts with a number or punctuation mark, scroll to **0-9** and press the **Right ►** button or **OK** button.
5. Scroll a track and press the **Play** button to start playback, or press and hold the **Play** button to add the selected track to the Now Playing List.

Playing all tracks

1. Press the **MENU** button.
2. Scroll to the **Music Library** option and press the **Right ►** button or **OK** button.
3. Scroll to the **All Tracks** option and press the **Play** button to start playback.

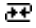
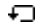

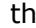
Viewing the Now Playing List

Press the **NOW PLAYING** button to view the Now Playing List. You can view the Now Playing List at anytime. If a track is being played back the following information is displayed:

- artist and album name
- title of the track
- elapsed time
- order number of current track and total number of tracks in the Now Playing List

Setting Play Modes

Press the **MODE** button to toggle between the following play modes:

- **Normal**
Resumes playing tracks in sequence.
- **Shuffle**
Plays all tracks in the Now Playing List in random order. When you select this play mode, the **Shuffle**  icon will appear on the LCD.
- **Repeat All**
Repeats all tracks in the Now Playing List. When you select this play mode, the **Repeat All**  icon will appear on the LCD.
- **Shuffle/Repeat All**
Plays and repeats a random track in the Now Playing List. When you select this play mode, the **Shuffle/Repeat All**   icon will appear on the LCD.

Viewing Configuration Information

The Info menu lets you view the following information:

- Wireless Receiver name
- Wireless Receiver MAC address
- Wireless Receiver IP address
- Wireless Receiver firmware version
- Remote Control firmware version
- number of tracks in PC Music Library

To display the Info menu

1. Press the **MENU** button.
2. Scroll to the **Info** option and press the **Right**  button or **OK** button.

Checking Battery Status

The LCD may display one of the following icons to indicate the battery status:



Batteries are full



Batteries are 60% full



Batteries are 30% full



Replace your batteries as soon as you can

Network

BLASTER

5

Configuring Settings

Configuring Settings

You can configure settings using the SB Wireless Music Application. For more information about using SB Wireless Music Application, refer to its online help.

To launch the SB Wireless Music Application

- ▶ Click **Start -> Programs** or **All Programs -> Creative -> SB Wireless Music -> SB Wireless Music Application**.

Configuring Your Wireless Receiver

1. In the SB Wireless Music Application, click the **Settings** button.
2. Click the **SB Wireless Music Device** tab.
3. Select your Wireless Receiver from the list box, and click the **Edit** button.

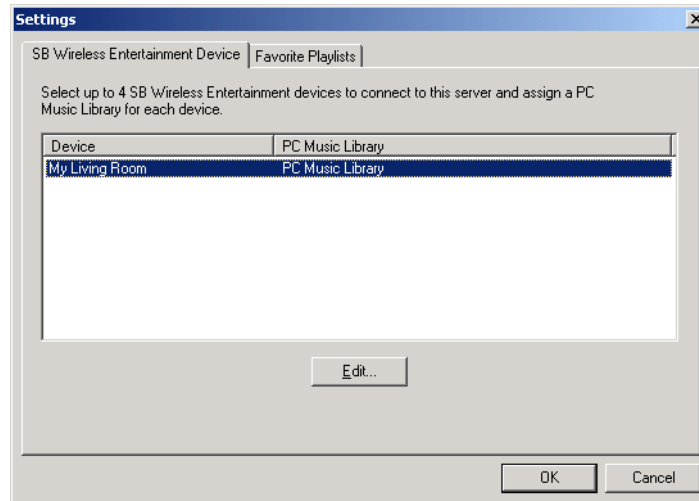


Figure 5-1

4. Change the settings of your Wireless Receiver and click the **OK** button.

Configuring Smart Playlist preferences

1. In the SB Wireless Music Application, click the **Smart Playlist** button.
2. In the **Smart Playlist Manager** dialog box, click the **New** button to create a new Smart Playlist.

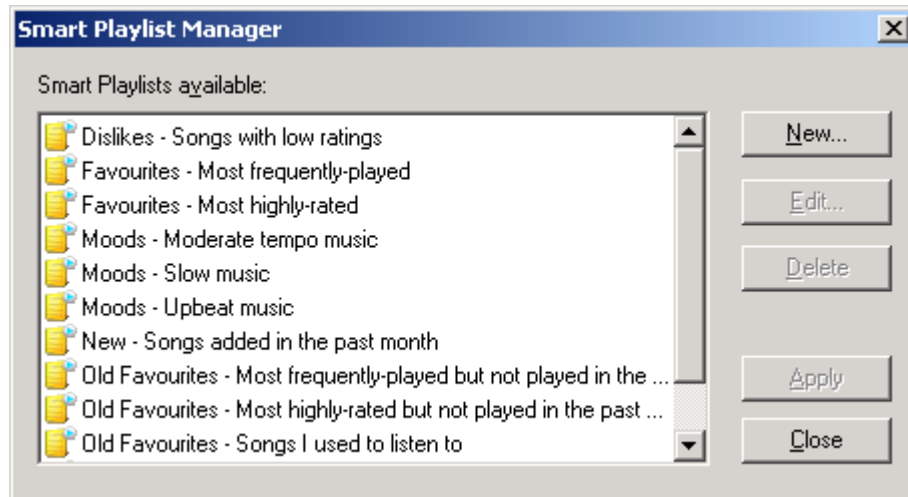


Figure 5-2

3. Enter a name for your Smart Playlist in the **Smart Playlist Name** box.
4. Select your preferences and click the **OK** button.
5. To change settings of an existing Smart Playlist, select a Smart Playlist in the **Smart Playlist available** box of the **Smart Playlist Manager** dialog box, and click the **Edit** button.

Configuring FAVORITES buttons

1. In the SB Wireless Music Application, click the **Settings** button.
2. Click the **Favorites Playlist** tab.

3. Assign playlists to the **FAVORITES** buttons from the list box of each button.

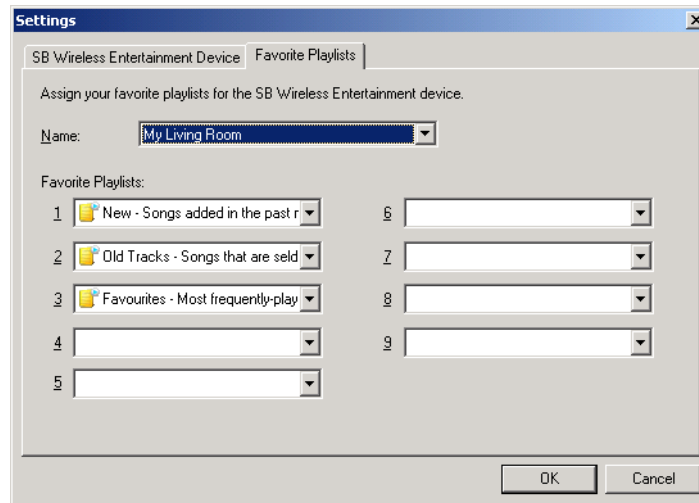


Figure 5-3

4. Click the **OK** button.

CREATIVE

Network

BLASTER

A

About Music Files

About Music Files

Overview

You can download music files from Internet music sites, or "rip" music files from audio CDs to your computer. Music files that you add to the Wireless Music Application must, however, be MP3 or WMA files.

MP3 and WMA files are music files that have lossy compression encoding, which means that some data is lost during compression. However, using standard sampling rates and bitrates will ensure that these music files retain much of their audio quality. The standard bitrate of most MP3 files is 128 Kbps, although some are set higher, at 160 or 192 Kbps. The standard bitrate for most WMA files is 64 Kbps. Higher bitrates will result in better audio quality, but file sizes will be larger as a consequence.

Downloading from the Internet

To get MP3 files from the Internet, use a search engine to locate sites with MP3 content. You can also try out these sites (web sites listed here are correct at the time of this document's release):

- NOMADWorld (<http://www.NOMADworld.com>)
- AMP3.com (<http://www.amp3.com>)
- SoundClick.com (<http://www.soundclick.com>)
- ArtistOne.com (<http://www.artistone.com>)
- Epitonic.com (<http://www.epitonic.com>)
- Soundbuzz.com (<http://www.soundbuzz.com>)

Follow the instructions on the sites to download the music files to your computer.

"Ripping" Audio CDs

The first phase of "ripping" is extracting audio data (usually WAV files) from an audio CD. Encoding is the second phase, where the audio data is converted into MP3 or WMA files. To "rip" audio CDs, you will need a CD-ROM/DVD-ROM drive that can extract digital audio data, and a program such as Creative MediaSource Organizer that can extract and encode this data. With Creative MediaSource Organizer, you can "rip" most audio CDs, as well as organize and transfer these "ripped" files.

The time needed for a successful audio extraction depends on:

- CD-ROM/DVD-ROM drive speed
- defects, like scratches on the audio CD
- error-checking features on the CD-ROM/DVD-ROM drive

To rip an audio CD using Creative MediaSource Organizer

1. Insert an audio CD into your CD-ROM/DVD-ROM drive.
2. Launch Creative MediaSource Organizer by clicking the **Creative MediaSource Player/Organizer** icon on your desktop.
3. If you are not already in Creative MediaSource Organizer, click the **Player/Organizer View** button.
4. In the **Sources** window, select [**d:**] **Audio CD** (replace **d:** with your CD-ROM/DVD-ROM drive).
5. In the **Task** bar, click the **Rip Now** button.

For more information about using Creative MediaSource, refer to its online Help.

CREATIVE

Network

BLASTER

B

Frequently Asked Questions

Frequently Asked Questions

This section covers common problems you might encounter or questions you might have while using your player. If you have a technical problem with this product, you may wish to consult our self-help tool "Knowledgebase" for online troubleshooting and solutions. Go to www.creative.com and select your region.

Installation and Configuration

What do I do when the installation does not start automatically after the Installation CD is inserted?

The AutoPlay feature in your Windows system may not be enabled.

To start the installation program through the My Computer shortcut menu

1. On your Windows desktop, double-click the **My Computer** icon.
2. Right-click the CD-ROM/DVD-ROM drive icon, and then click **AutoPlay**.
3. Follow the onscreen instructions.

To enable AutoPlay through Auto Insert Notification

1. Click **Start -> Settings -> Control Panel**.
2. Double-click the **System** icon. The **System Properties** dialog box appears.
3. Click the **Device Manager** tab and select your CD-ROM drive.
4. Click the **Properties** button.
5. Click the **Settings** tab, and then select **Auto Insert Notification**.
6. Click the **OK** button.

To start the installation program through Windows Explorer

1. In Windows Explorer, search and locate the **d:\ctrun** folder (replace **d:** with the drive letter of your CD-ROM/DVD-ROM drive).
2. Double-click the **ctrun.exe** file.

Why does a Hardware Installation error message appears on a Windows XP operating system during installation?

At the time of this product's release, Microsoft strongly encouraged companies to submit their hardware solutions for certification. If a hardware device driver is not submitted, or does not qualify, for Microsoft certification, a warning message similar to the one shown here, appears.



You may see the message when installing this driver. If you do, you may choose to click the **Continue Anyway** button. Creative has tested this driver on Windows XP, and it does not impair or destabilize your computer.

Operation

Why do I have to enter configuration settings during installation?

Sound Blaster Wireless Music is designed to be easy to install. Configuration-free installation is possible when:

- yours is the only wireless network operating in the vicinity
- your wireless router or access point is operating in default mode, where WEP encryption is disabled and beacon message is enabled

My computer does not have an audio card. Will Sound Blaster Wireless Music work?

Yes, Sound Blaster Wireless Music does not require an audio card to work. However, you will not be able to preview tracks with the SB Wireless Music Application on your computer.

Can I play back Internet streaming audio?

No. This feature is currently not supported.

Can I play back songs from audio CDs?

No, but you can rip songs from audio CDs into MP3 or WMA formats with Creative MediaSource™ Organizar. Creative MediaSource is automatically installed on your computer when you install the software. For more information about ripping songs from audio CDs, see ""Ripping" Audio CDs" on page A-1.

I cannot play back some of my MP3 and WMA files. Why is this?

Make sure that your MP3 and WMA files have not been moved since it was imported into Creative MediaSource.

Also, if your MP3 and WMA files have been encoded with Digital Rights Management (DRM), Sound Blaster Wireless Music cannot play them back.

How do I know if my Wireless Receiver is connected to my wireless network?

The Info menu displays the IP address of your Wireless Receiver. The only difference between this IP address and the IP address of the computer that the SB Wireless Music Server is running on, is the last number. For example, the IP address of your Wireless Receiver can be **192.168.1.100**, whilst the IP address of the computer that the SB Wireless Music Server is running on is **192.168.1.101**.

What do I do if my Wireless Receiver is not connected to my wireless network?

- Try moving your Wireless Receiver closer to your wireless router or access point, or vice versa
- Make sure your wireless router or access point is active and transmitting data
- Connect your Wireless Receiver to your computer and reconfigure your Wireless Receiver's connection settings. For more information, see "Configuring Settings" on page 5-1.

How do I check the IP address of the computer that the SB Wireless Music Server is running on?

Move the mouse over the **SB Wireless Music Server** icon in your computer's system tray. A dialog box will appear showing the IP address of the computer. The system tray is usually located at the bottom right corner of your desktop.

What do I do if my Wireless Receiver does not detect my music files?

- Go to the Info menu on your Remote Control and check that your Wireless Receiver is connected to the SB Wireless Music Server
- Make sure that music files have been imported using Creative MediaSource. You can check Info menu on your Remote Control for the number of tracks that has been imported.

Why do I have problems connecting to my wireless network when I use an 802.11g router?

Your 802.11g router may be running on an older firmware version. Download and install the latest version of your router's firmware that provides full 802.11g compatibility. Contact your router's manufacturer for more information.

How many Wireless Receivers can I use on a wireless network?

A wireless network can support up to four Wireless Receivers playing at the same time. Additional Wireless Receivers may be installed provided that not more than four are playing at the same time.

How do I reset my Wireless Receiver?

For normal operation, you only need to set your Wireless Receiver to standby using the Remote Control.

However, if you want to fully reset your Wireless Receiver, disconnect your Wireless Receiver from the power outlet and wait for a few seconds before reconnecting it to the power outlet.

How do I create playlists using my Remote Control?

You can create Smart Playlists using your Remote Control. Smart Playlists are automatically generated playlists of your music collection. Smart Playlists are generated according to the preferences that you set using the SB Wireless Music Application.

Can I search from tracks using my Remote Control?

Yes, you can search for tracks by artist, album and genre using your Remote Control. For more information, see "Playing Music" on page 4-2.

What do I do if my Remote Control does not display anything?

- Press the **Power** button on your Remote Control
- Make sure the batteries are not flat, and are properly inserted in your Remote Control
- Make sure you are using your Remote Control within 10 meters (33 feet) of your Wireless Receiver
- Make sure your Wireless Receiver is connected to a power outlet, and the power outlet is turned on if necessary

What do I do when the Info menu on my Remote Control displays the "No Server" message?

- Make sure the SB Wireless Music Server is running on your computer. You will see the **SB Wireless Music Server** icon in your computer's system tray when the SB Wireless Music

Server is running. The system tray is usually located at the bottom right corner of your desktop.

- Make sure your computer and your Wireless Receiver are within transmission range of your wireless router or access point
- Make sure your Wireless Receiver is connected to the wireless network.
- If using static IP address, make sure that there is no IP address conflict with another computer or device

How do I reset my Remote Control?

Remove your Remote Control's batteries, and then re-insert them.

Why does the LCD of my Remote Control go blank after a few seconds?

This is a power saving feature of your Remote Control. Pushing any button on the Remote Control will display the menu options on the LCD again. Note that pushing any of the blue buttons on the Remote Control will immediately activate the Wireless Receiver. For example, if you press the **Play** button, playback will start.

Why does nothing happen when I press a FAVORITES button on my Remote Control?

The first three **FAVORITES** buttons are preset with Smart Playlists for your convenience. You have to manually set the other **FAVORITES** buttons using the SB Wireless Music Application. You can manually set all of the FAVORITES buttons.

Why does music play when I press the Play button without selecting anything?

This feature is for your convenience. When nothing is selected and the **Play** button is pressed, the playlist assigned to the first **FAVORITES** button will be played back.

Why is there no beeping sound from my Remote Control when I press the FIND REMOTE button on my Wireless Receiver?

- Your Remote Control may be out of range.
- Your Remote Control's batteries may be flat

Speakers

What type of speakers should I use?

You can connect any amplified digital or analog 2 or 2.1 channel speaker system. For high-quality sound, we recommend the following Creative I-Trigue™ range of speakers:

- Creative I-Trigue 2.1 L3300
- Creative I-Trigue L3500
- Creative I-Trigue L3450

The availability of Creative speakers varies from country to country. Check www.creative.com/speakers or your local Creative office/distributor for details.

Can I listen to music in surround sound?

No, Sound Blaster Wireless Music only supports stereo output. However, some Creative speaker systems feature Creative Music Surround Sound (CMSS) that upmixes stereo input to 5.1 channels or above.

Updates

Where can I get more information on all Sound Blaster products?

Visit www.soundblaster.com for updates and downloads relating to all Sound Blaster products.

CREATIVE

Network

BLASTER

C

Maintenance and Safety Advice

Maintenance and Safety Advice

Wireless Receiver and Remote Control

- Store away from direct sunlight.
- Do not expose to heat or fire.
- Avoid using or storing in surroundings that exceed 45°C (113°F).
- Keep away from excessive moisture.
- Do not subject to excessive force or impact.
- Do not modify or disassemble.
- Only clean the product with a soft dry cloth. Do not use liquid cleaners.
- Only qualified personnel should repair or service the product.
- Remember to set the volume at a moderate level. Listening to music at high volumes can impair your hearing and damage your speakers.

Batteries

- Store away from direct sunlight.
- Do not expose to heat or fire.
- Avoid using or storing in surroundings that exceed 45°C (113°F).
- Keep away from excessive moisture.
- Do not subject to excessive force or impact.
- Do not modify or disassemble.
- Avoid contact with metal objects.
- Do not pierce or crush.
- If there is leakage, stench, discoloration or deformation during charging or use, remove the battery and do not use it again. Clean your hands well before handling food or touching sensitive areas of your body, for example, your eyes.

CREATIVE

Network

BLASTER

D

Technical Specifications

Technical Specifications

Wireless Receiver

Standards	<input type="checkbox"/> IEEE 802.11b
Interface	<input type="checkbox"/> USB 1.1 port for Wireless Receiver installation and configuration <input type="checkbox"/> Two RCA jacks for analog output <input type="checkbox"/> Optical connector for optical SPDIF output
Antenna	<input type="checkbox"/> Built-in antenna (2.4 GHz) <input type="checkbox"/> Built-in antenna (433 MHz — 924 MHz)
Frequency Band (802.11)	<input type="checkbox"/> 2.412 GHz — 2.472 GHz
Frequency Band (RF Remote Control)	<input type="checkbox"/> US (FCC): 906 MHz, 910 MHz, 917 MHz, 924 MHz <input type="checkbox"/> Europe (CE): 433.3 MHz, 433.7 MHz, 434.1 MHz, 434.5 MHz
Data Rate	<input type="checkbox"/> 11, 5.5, 2, 1 Mbps
Channels	<input type="checkbox"/> 11 Channels (US, Canada), 13 Channels (Europe)
Security	<input type="checkbox"/> 64 or 128-bit WEP encryption
Range	<input type="checkbox"/> Indoors: Up to 50 meters (164 feet) at 11 Mbps, subject to the signal strength of your wireless network

- Outdoors: Up to 150 meters (492 feet) at 11 Mbps, subject to the signal strength of your wireless network

Playback Formats

- MPEG Audio Layer 3 (MP3) and Windows Media Audio (WMA)

Power Adapter

- 6VAC 1.5A adaptor

Remote Control

LCD

- 132 x 64 pixel backlit display

Antenna

- Built-in antenna (433 MHz — 924 MHz)

Frequency Band

- US (FCC): 906 MHz, 910 MHz, 917 MHz, 924 MHz
- Europe (CE): 433.3 MHz, 433.7 MHz, 434.1 MHz, 434.5 MHz

Range

- Indoor: Up to 10 meters (33 feet)

Power Requirements

- 3 AA batteries

CREATIVE

Network

BLASTER

E

Glossary

Glossary

Ad-hoc mode	A small peer-to-peer network mode, in which wireless clients are connected to each other directly without using an access point. Some of the wireless clients are part of the network for a limited duration. They are also in close proximity with the rest of the network. According to the IEEE 802.11b specification, Ad-hoc mode is referred to as an independent basic service set.
Antenna	A device that intercepts radio frequency (RF) waves from the atmosphere and converts them to corresponding signal voltages.
Access Point (AP)	A networking device that transparently bridges wireless computers to a wired local network.
Bandwidth	A measure of the maximum rate of data transfer. A higher bandwidth allows more data transmission in a given period of time. For digital services, the bandwidth is usually expressed in bits or bytes per second.
BSS (Basic Service Set)	A group of wireless clients and an access point using the same ID (SSID).
DHCP (Dynamic Host Configuration Protocol)	A method of assigning a temporary IP address to a host, such as a computer, connected on a specific network. With dynamic addressing, a particular host may have a different IP address each time it connects to the network.
Dynamic IP address	See <i>DHCP (Dynamic Host Configuration Protocol)</i> .

Encryption	A procedure to convert a file from its original form to one that can be read only by the intended recipient.
IEEE 802.11	A family of wireless network standards, which includes 802.11a, 802.11b, 802.11e, and 802.11g. The original 802.11 standard was first approved in 1997 but was not very successful because it was relatively slow at 2 Mbps.
IEEE 802.11b	A high-bit wireless network standard that works on the 2.4 GHz band and utilizes DSSS (direct sequence spread spectrum) technology. It offers data bit rates of up to 11 Mbps and the range is from 200 to 300 feet for maximum speed.
IEEE 802.11g	A new 802.11 standard for wireless networking hardware. The 802.11g standard specifies a maximum data transfer rate of 54 Mbps, an operating frequency of 2.4 GHz, backward compatibility with 802.11b devices and WEP encryption for security.
Infrastructure mode	A LAN or other small network mode in which wireless clients are part of the network and use one or more access points to connect to a wired network. Each access point is connected to the Ethernet network using a standard Ethernet cable. In IEEE 802.11b specification, the infrastructure mode is referred to as the Basic Service Set.
IP (Internet Protocol)	The standard protocol within TCP/IP that defines the basic unit of information by breaking down data messages into packets, routing and transporting the packets over networks, then reassembling the packets at their destination. IP corresponds to the Network layer (layer 3) in the ISP/OSI model.
IP address	The address for a computer on a TCP/IP network. The IP address identifies a particular machine on a network. The format of an IP address is a 32-bit numeric address written as four numbers separated by periods. Each number can be 0 to 255, for example, 11.160.10.240 is an IP address. Any machine connected to the Internet is assigned an IP address.

LAN (Local Area Network)	A computer network that spans a relatively small area. Most LANs are confined to an office, single building, or group of buildings.
MAC (Media Access Control) address	A unique number that is assigned by manufacturers to each Ethernet network device. A MAC address lets a network identify Ethernet network devices at the hardware level.
Router	A hardware device that connects two separately functional networks using the same or different protocols. Routers look at the destination addresses on the packets passing through them and then decide which route to send them on.
SSID (Service Set Identity)	A group name shared by all members of an IEEE 802.11 standard wireless network. Only wireless devices with the same SSID are allowed to establish connections.
Static IP address	A permanent IP address assigned to a computer (host) connected on a specific network.
TCP/IP (Transmission Control Protocol/ Internet Protocol)	A suite of communication protocols that are used by computers or networking devices on the Internet so that they can communicate with each other. TCP/IP uses several protocols, the two main being TCP and IP.
USB (Universal Serial Bus)	A plug-and-play interface that allows the user to attach a device without having to add an adapter card and turning off the computer.
WEP (Wired Equivalent Privacy)	A wired security policy defined by the IEEE 802.11 working group. WEP uses the RC-4 40-bit encryption algorithm to scramble all data before it is transmitted. Vendors add proprietary encryption features to their software, taking the encryption level up to 128 bits.

Wi-Fi

Wi-Fi is promoted by the Wireless Ethernet Compatibility Alliance (WECA). It places a stamp of certification on wireless products that are interoperable with other 802.11b compliant products.