

Safety instructions

Please read the following before using Creative products:

- To be completely disconnected from the power input, the mains plug has to be disconnected/detached from the mains.
- Disconnect the mains plug when the device is expected to be unused for several days.
- Remove the batteries when not in use for an extended period of time.

Additional guidelines for *Bluetooth* devices

- The short wave radio frequency signals of a *Bluetooth* device may impair the operation of other electronic and medical devices
- Switch off the device where it is prohibited. Do not use the device in medical facilities, aircraft, refueling points, close to automatic doors, automatic fire alarms or other automatically controlled devices
- Keep this device at least 20 cm from pacemakers and other medical devices. Radio waves may impair the operation of pacemakers and other medical devices

Safety information for battery

- The battery must be recycled or disposed of properly. Contact local agencies for recycling and disposal information.
- Do not allow metal objects to touch the terminal of the battery.
- If there is leakage, an offensive odor, discoloration or deformation during charging or use, remove the battery and do not use it again.
- Clean your hands well before touching food or sensitive areas, such as, your eyes.
- Do not expose to excessive heat such as sunshine, fire or the like.
- The following statement only applicable to products containing "CR" type lithium coin cells:

Perchlorate material special handling may apply
see www.dtsc.ca.gov/hazardouswaste/perchlorate

CAUTION: Risk of explosion if battery is replaced by incorrect types.

Technical Specifications

- Input Rating: 100 - 240V ~ 50/60Hz 400mA
- *Bluetooth* Version : *Bluetooth* 2.1 + EDR (Enhanced Data Rate)
- Operating Frequency: 2402 - 2480 MHz
- Supported *Bluetooth* profiles* : A2DP (Wireless Stereo *Bluetooth*), AVRCP (*Bluetooth* Remote Control)
- Operating Range: Up to 10 meters (Measured in open space. Walls and structures may affect range of device.)

Compatibility Disclaimer

Wireless performance is dependent on your device's *Bluetooth* wireless technology. Refer to your device manufacturer's manual.

Creative will not be liable for any loss of data or leakage resulting from the use of these devices.

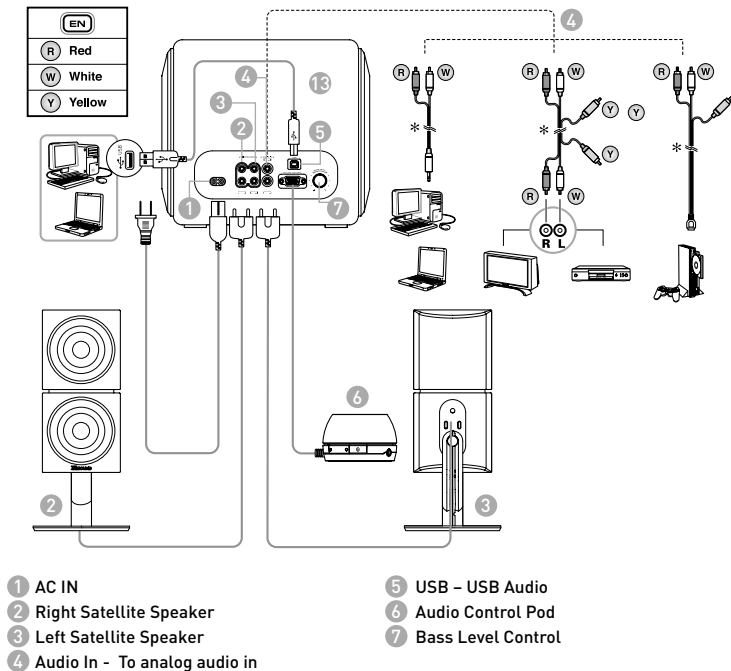
Notes

* Refer to your *Bluetooth* device (notebook¹, PC¹, mobile device²) manufacturer's documentation/website for supported profiles.

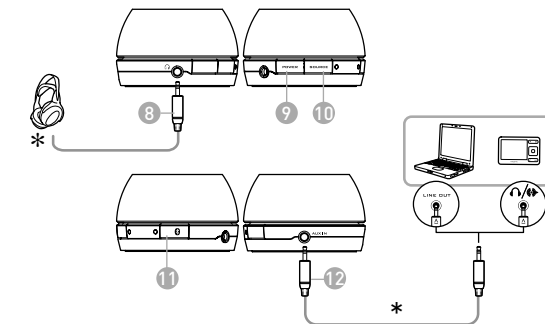
¹ Compatible with PC (Windows XP/Vista/7), Apple Macintosh equipped with *Bluetooth* wireless stereo

² Compatible with most major brands of *Bluetooth* A2DP enabled mobile phones and A2DP enabled mobile phones (including iPhone, Windows Mobile)

1 Product Overview / Connectivity Diagram



Side views of the Audio Control Pod:



Audio Control Pod LED status indications:

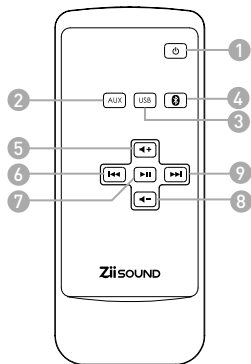
GREEN – Line-In/ AUX In
 AMBER – USB Audio
 BLUE – Bluetooth Connection

- 8 Headphone
- 9 Power ON/OFF
- 10 Source
- 11 CONNECT Button – Bluetooth Pair and Connection
- 12 AUX In – Auxiliary line-in for Audio Devices
- 13 SLAM™ Subwoofer

* optional (sold separately)

* optional (sold separately)

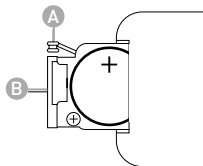
2 Remote Control overview



- 1 Power
- 2 AUX Source
- 3 USB Audio
- 4 Bluetooth Stereo Source
- 5 Volume +
- 6 Previous Track
- 7 Play/ Pause
- 8 Volume -
- 9 Next Track

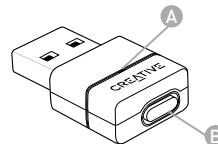
To replace the battery in the remote control

- Depress (A) and pull out (B)
- Replace the battery with the positive polarity facing upward and push (B) back to remote control



The remote control uses a CR2025 3V lithium coin battery

3 Enjoy high performance wireless audio from ZiiSound T6 via Bluetooth® Audio Transmitter BT-D1



A: LED Status Indicator

Indicate the current status of the USB Bluetooth Transmitter

B: CONNECT button

A multi function button used to perform pairing and disconnection

- A** Bluetooth® Audio BT-D1 is paired with ZiiSound T6 at factory. Simply insert the BT-D1 into your PC to enjoy the high quality wireless audio.

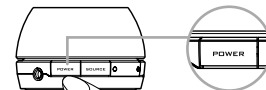


- B** Wait for computer to install hardware

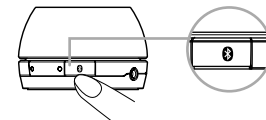


- C** Power on the speaker and the LED status indicator will show green.

Note: Allow the flashing LED indicators to stop after plugging the speaker system to the mains. This indicates that the speaker system is initialized and ready to be powered ON.



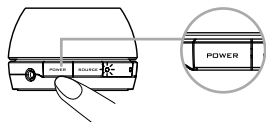
- D** Press once and release the CONNECT button. The LED will show blinking Blue then steady Blue LED indicating ZiiSound T6 is ready to stream music.



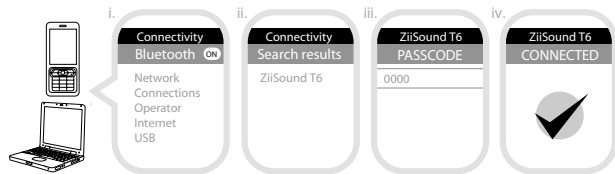
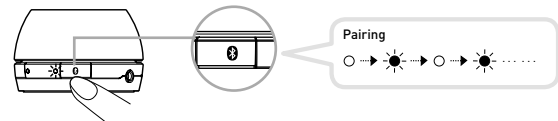
4 To pair and CONNECT the ZiiSound T6 with other Bluetooth devices

A Power on the speaker and the LED status indicator will show green.

Note: Allow the flashing LED indicators to stop after plugging the speaker system to the mains. This indicates that the speaker system is initialized and ready to be powered ON.



B Press and hold CONNECT button for 3 seconds while ZiiSound T6 is ON. BLUE LED will light up and fast blink.



- Turn on the *Bluetooth* feature on your device
- Search for ZiiSound T6
- Pair and connect to ZiiSound T6. If prompted for passcode, enter 0000.
- Pairing successful, ready to stream music

Note: The above are generic steps to pair a *Bluetooth* device, for more specific instructions on *Bluetooth* connectivity for your device, please consult your manufacturer's manual.

5 Switching between Paired Devices

Switch between your current connected device to your previous connected devices by following these steps:

Action	LED status	Status
Press CONNECT button for 1 second	ZiiSound T6 LED blinks and stay lit in Blue	Ready to stream music

Press the *Bluetooth* icon on the remote control to switch between paired devices.

Note: Ensure that your next paired devices' *Bluetooth* feature is ON and ready to accept connections.

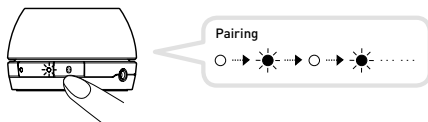
6 Reset to factory setting

Follow these steps to return to factory settings and to clear paired device memory in the ZiiSound T6:

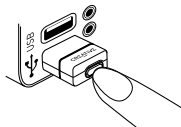
Action	LED status	Status
<p>Power OFF the speaker.</p> <p>Press and hold Power button for 7 seconds.</p> <p>ZiiSound T6 will auto Power up. When the Blue LED starts to blink, ZiiSound T6 is ready for pairing.</p>	Blue LED fast blinks	Pairing mode. Ready to accept connection from other devices

7 To establish a new connection between BT-D1 with ZiiSound T6

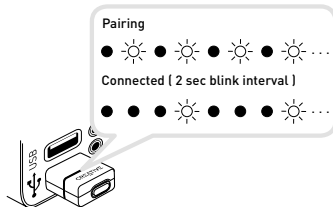
- A** Press and hold CONNECT button for 3 seconds while ZiiSound T6 is ON.



- B** Put the BT-D1 into pairing mode for pairing



- C** Press and hold the CONNECT button for 3 seconds then release.
Wait for LED pattern to turn from Pairing pattern to Connected pattern.



- D** Ready to stream music from computer

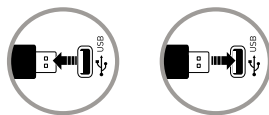
For Mac® OS:

- Go to "System Preferences", choose "Sound"
- Choose the Output tab, select "Creative Bluetooth Audio D1"

8 To reconnect the BT-D1 to a previously paired device

After the BT-D1 has been paired to device, it will always attempt to reconnect to the paired device when the BT-D1 is plugged into a USB port. Always ensure that the receiving device has its *Bluetooth* enabled and ready to accept connections. You may also try the following.

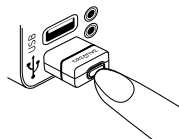
- Ensure that the receiving device has its *Bluetooth* enabled and ready to accept connections
- With the BT-D1 in the computer USB port, press the CONNECT button on the BT-D1 to initiate a connection to your device.



OR

- B2) Plug out and plug in your BT-D1 from the computer and wait for it to auto connect

Note: The BT-D1 will stream any audio (including startup, shutdown or warning tones) played from your computer. Ensure that the volume is kept to a comfortable level.



To disconnect from The BT-D1

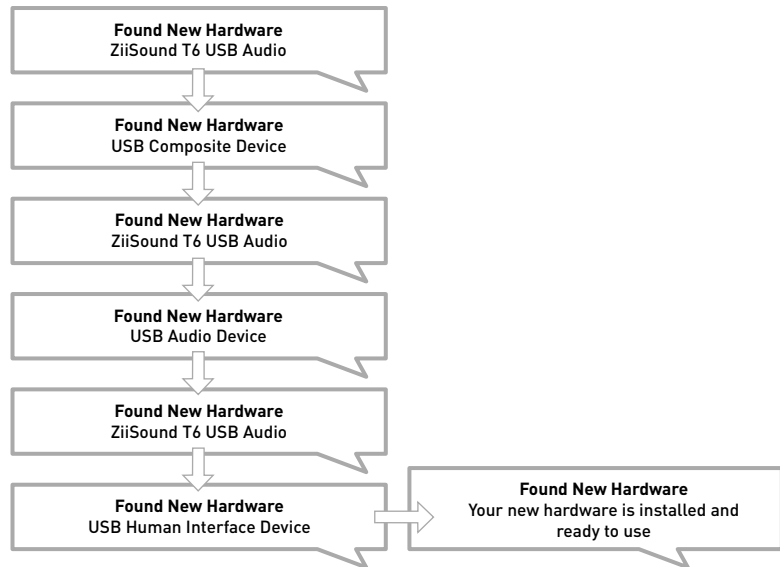
To stop streaming music from the BT-D1 to your receiving *Bluetooth* device, simply either plug out the BT-D1 or press the CONNECT button once. Pressing once more will reconnect the BT-D1 back to its last connected *Bluetooth* device.

9.1 Enjoy 5.1 audio via USB connection

Windows XP setup

1. Plug in the USB cable, wait for a series of "Found New Hardware" messages to appear on your computer screen.

Note: If you do not see these messages, the capability to display them may be disabled in your computer. Wait for 1-2 minutes before proceeding to the next step. Alternatively, you could try another USB port.



In Windows XP Control Panel, open **Sounds and Audio Devices Properties**.

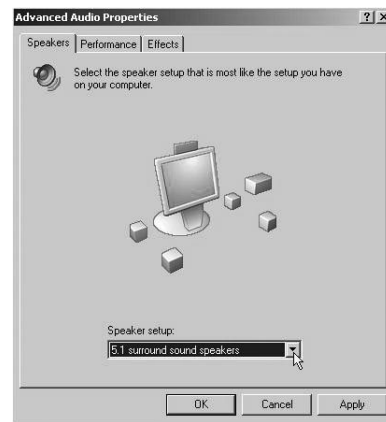
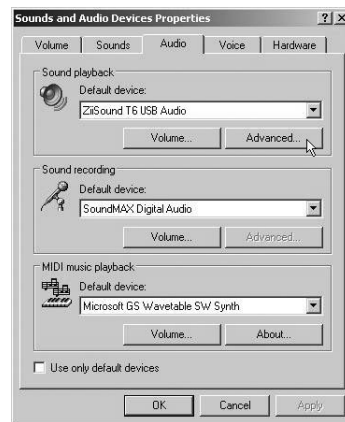
Under the **Audio** tab, verify that **ZiiSound T6 USB Audio** is selected under **Sound playback**.

Under **Sound playback** setting, click the **Advanced** button to open **Advanced Audio Properties**.

In the **Speaker** setup drop list, select **5.1 surround sound speakers**.

Click **Apply** and then **OK**.

Your ZiiSound T6 is now ready for use.



9.2 Windows Vista / 7 Setup

- A** Please ensure that the correct audio source is selected by right clicking on the Volume icon on the system tray.



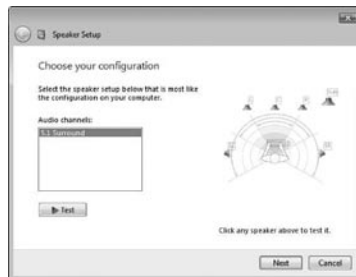
- B** Select Playback Devices.



- C** Select ZiiSound T6 USB Audio and click Set default.



- D** Click on Configure and ensure that 5.1 surround is selected under Audio Channels.



- E** Click Next for the next few configuration windows to accept defaults until setup is finished.

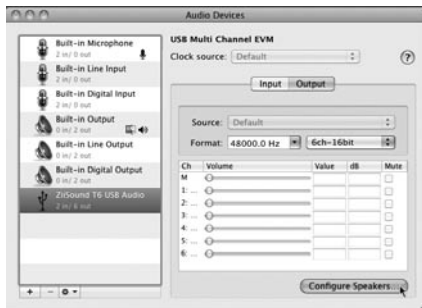


9.3 Mac OS® X audio setup

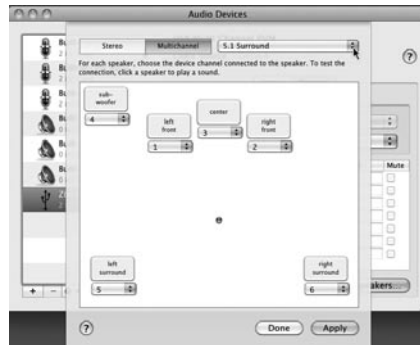
- A** Open the Applications, Utilities then Audio MIDI Setup.



- B** Select on ZiiSound T6 USB Audio, click on Output, click on Configure Speakers

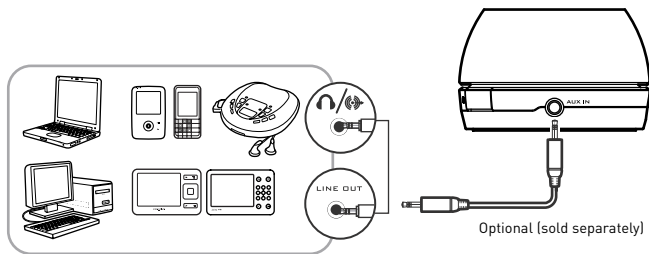


- C** Select 5.1 Surround, click Apply and then click Done.



- D** Close all panels. Your ZiiSound T6 is now ready for use.

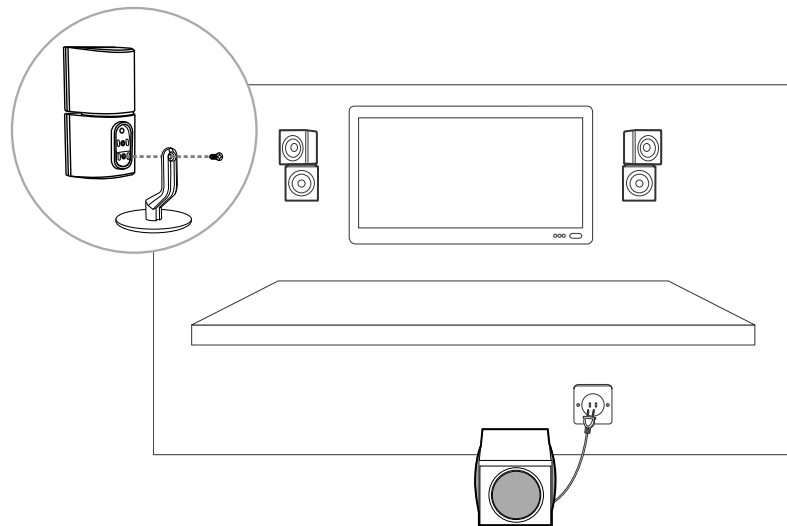
10 Playback with other audio devices via AUX In



11 Wall-mountable satellites

Ziisound T6 satellites can be wall-mountable, for more specific instructions on wall mounting, please consult your wall mount adapter manufacturer's manual.

For more information, please refer to creative.com/products/speakers/wallmount



FAQ

Perform the following trouble-shooting steps before sending it for servicing. For more information, please refer to support.creative.com

There's no *Bluetooth* link between my device and the ZiiSound T6. What should I do?

- Delete the ZiiSound T6 name entry from your *Bluetooth* device paired memory list and perform the steps Section 4 (To pair and connect the ZiiSound T6 with other *Bluetooth* devices) to re-pair your device with ZiiSound T6
- Position them within 1 meter or closer to each other if you experience pairing difficulties
- Ensure that both your *Bluetooth* device and ZiiSound T6 are not connected to any other devices

Bluetooth link is established and paired between the devices but there's no music. What should I do?

- With some built-in *Bluetooth* enable computers, 3rd party USB *Bluetooth* dongles or other devices, you may be required to manually specify/ setup the audio output as ZiiSound T6, e.g., (under sound and audio devices section on your computer's operating system) Please consult your manufacturer's documentation for further information.

Regulatory Information

The following sections contain notices for various countries:

CAUTION: This product is intended for use with FCC/CE certified computer equipment. Please check the equipment operating/installation manual and/or with the equipment manufacturer to verify/confirm if your equipment is suitable prior to the installation or use of the product.

Federal Communication Commission (FCC) Interference Statement Notice for USA

FCC Part 15: This equipment has been tested and found to comply with the limits for a Class B digital device, pursuant to Part 15 of the FCC Rules. These limits are designed to provide reasonable protection against harmful interference in a residential installation. This equipment generates, uses and can radiate radio frequency energy and, if not installed and used in accordance with the instructions, may cause harmful interference to radio communications. However, there is no guarantee that interference will not occur in a particular installation. If this equipment does cause harmful interference to radio or television reception, which can be determined by turning the equipment off and on, the user is encouraged to try to correct the interference by one or more of the following measures:

- Reorient or relocate the receiving antenna.
- Increase the separation between the equipment and receiver.
- Connect the equipment into an outlet on a circuit different from that to which the receiver is connected.
- Consult the dealer or an experienced radio/TV technician for help.

This device complies with part 15 of the FCC Rules. Operation is subject to the following two conditions:

1. This device may not cause harmful interference, and
2. This device must accept any interference received, including interference that may cause undesired operation.

CAUTION: To comply with the limits of the Class B digital device, pursuant to Part 15 of the FCC Rules, this device must be installed with computer equipment certified to comply with Class B limits. All cables used to connect to the computer and peripherals must be shielded and grounded. Operation with non-certified computers or non-shielded cables may result in interference to radio or television reception.

MODIFICATION: Any changes or modifications not expressly approved by the grantee of this device could void the user's authority to operate the device.

Federal Communication Commission (FCC) Radiation Exposure Statement

This equipment complies with FCC radiation exposure limits set forth for an uncontrolled environment. This equipment should be installed and operated with minimum distance 20cm between the radiator & your body. This transmitter must not be co-located or operating in conjunction with any other antenna or transmitter.

California Proposition 65 Statement

WARNING: Handling this product may expose you to chemicals known to the State of California to cause cancer and birth defects or other reproductive harm.

Wash hands after handling.

Explanatory Note: California Safe Drinking Water and Toxic Enforcement Act of 1986 (Proposition 65) requires special product labeling for products containing certain chemicals known to the State of California to cause cancer, birth defects or other reproductive harm. Creative has chosen to provide a warning based on its knowledge about the presence of one or more listed chemicals without attempting to evaluate the level of exposure. With Creative's products, the exposure may be below the Proposition 65 level of concern, or could even be zero. However, out of an abundance of caution, Creative has elected to place the Proposition 65 warning on its products.

Déclaration de la Proposition 65 de la Californie

AVERTISSEMENT: La manipulation de ce produit peut vous exposer à des produits chimiques qui sont reconnus par l'État de la Californie comme pouvant provoquer le cancer, des anomalies congénitales ou d'autres effets nuisibles à la reproduction. ***Veillez vous laver les mains après l'avoir manipuler.***

Note explicative: La Proposition 65 (California Safe Drinking Water and Toxic Enforcement Act of 1986) de la Californie sur les matières dangereuses et l'eau potable exige un étiquetage spécial pour les produits contenant certains produits chimiques qui sont reconnus par l'État de la Californie comme pouvant provoquer le cancer, des anomalies congénitales ou d'autres effets nuisibles à la reproduction. Creative a choisi d'inclure une mise en garde s'appuyant sur sa connaissance de la présence d'un ou de plusieurs de ces produits chimiques sans essayer d'en évaluer le niveau d'exposition. Pour les produits de Creative, le niveau d'exposition peut être inférieur au niveau critique établi par la Proposition 65 ou même

être nul. Néanmoins, par souci extrême de prudence, Creative a choisi de placer l'avertissement de la Proposition 65 sur ses produits.

Notice for Canada

This Class B digital apparatus complies with Canadian ICES-003.

Cet appareil numérique de la classe B est conforme à la norme NMB-003 du Canada.

Operation is subject to the following two conditions:

- (1) This device may not cause harmful interference, and
- (2) This device must accept any interference received, including interference that may cause undesirable operation.

Son Fonctionnement est soumis aux deux conditions suivantes :

- (1) Le matériel ne peut être source D'interférences et
- (2) Doit accepter toutes les interférences reçues, Y compris celles pouvant provoquer un fonctionnement indésirable.

CANADIAN CLASS B STATEMENT: This digital device does not exceed the Class B limits for radio noise emissions from digital apparatus as set out in the interference-causing equipment standard entitled "Digital Apparatus," ICES-003 of the Department of Communications. Cet appareil numérique respecte les limites de bruits radioélectriques applicables aux appareils numériques de Classe B prescrites dans la norme sur le matériel brouilleur: "Appareils Numériques," NMB-003 édictée par le ministre des Communications.

MODIFICATION: Any changes or modifications not expressly approved by the grantee of this device could void the user's authority to operate the device.

Toute modification non approuvée explicitement par le fournisseur de licence de l'appareil peut entraîner l'annulation du droit de l'utilisateur à utiliser l'appareil

DECLARATION OF CONFORMITY

Manufacturer / Importer's Name : Creative Labs, Inc.
Manufacturer / Importer's Address : 1901 McCarthy Boulevard
Milpitas, CA. 95035
United States
Tel: (408) 428-6600

declares under its sole responsibility that the product

Trade Name : ZiiSound

Model Numbers : MF0375

has been tested accordingly to the FCC/CISPR22 requirement for class B devices and found compliant with the following standards:

EMI/EMC: ANSI C63.4, FCC Part 15 Subpart B & C

Complies with Canadian ICES-003 Class B & RSS-210 Standards

This device complies with part 15 of the FCC Rules. Operation is subject to the following two conditions:

1. This device may not cause harmful interference, and
2. This device must accept any interference received, including interference that may cause undesirable operation.

Ce matériel est conforme à la section 15 des règles FCC. Son Fonctionnement est soumis aux deux conditions suivantes:

1. Le matériel ne peut être source D'interférences et
2. Doit accepter toutes les interférences reçues, Y compris celles pouvant provoquer un fonctionnement indésirable.

Compliance Manager
Creative Labs, Inc.
December 8, 2010

Notice for Singapore

Complies with
IDA Standards
DB00148

Notice for Australia/New Zealand



This product complies with the requirements of the ACMA
Radiocommunications (Electromagnetic Compatibility) Standard 2008.

Notice for Taiwan

敬告使用者:

1. 本產品使用時,不致造成違反低功率電波輻射性電機管理辦法之控制、調整及開關之使用方法。
2. 本產品不得任意調整更改各項零件或對於發射之功率影響之作為,若有操作問題請與本公司人員聯繫;並由本公司 負起監督及維修之責任。
3. 根據交通部低功率電波輻射性電機管理辦法規定:

第十二條

經型式認證合格之低功率射頻電機,非經許可,公司、商號或使用者均不得擅自變更頻率、加大功率或變更原設計之特性及功能。

第十四條

低功率射頻電機之使用不得影響飛航安全及干擾合法通信;經發現有干擾現象時,應立即停用,並改善至無干擾時方得繼續使用。

前項合法通信,指依電信法規定作業之無線電通信。

低功率射頻電機須忍受合法通信或工業、科學及醫療用電波輻射性電機設備之干擾。

