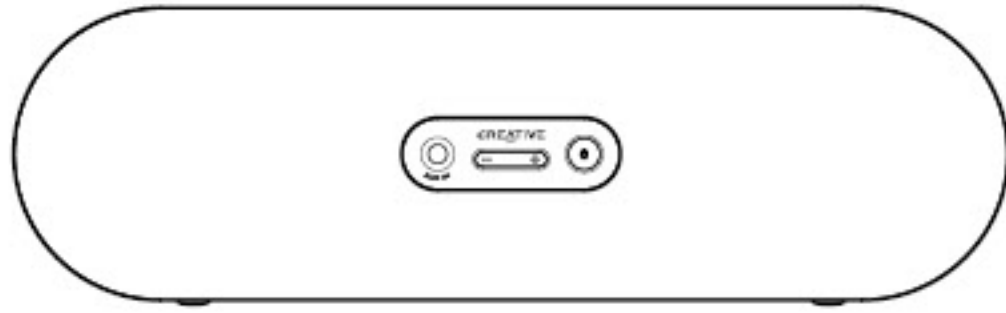


CREATIVE

D80

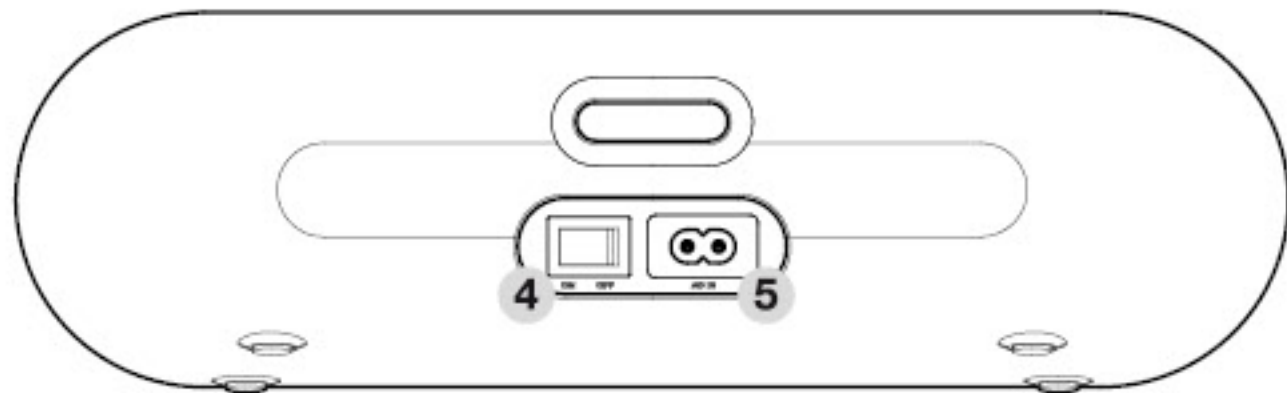
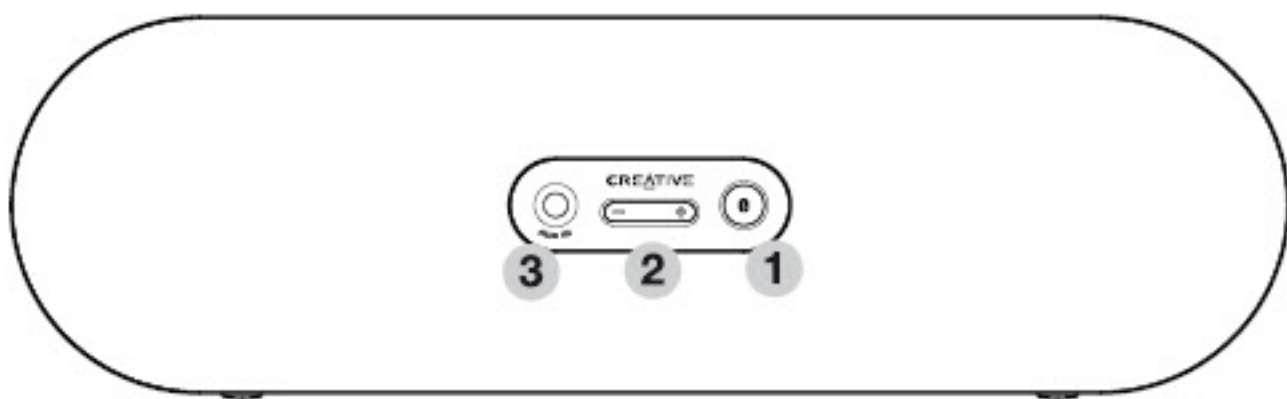
- EN. Quick Start Guide
- FR. Démarrage Rapide
- ES. Guía Rápida
- BP. Introdução rápida
- JP. クイックスタートガイド
- CS. 快速入门指南
- CT. 快速入門指南
- TR. Kullanım
- KO. 빠른 시작 안내서



Bluetooth
compatible with Stereo
Bluetooth devices

PN 03MF81300000 Rev A
Model No / 型号 : MF8130

1. Product Overview



EN Product Overview

- CONNECT Button / LED status indicator

LED Status	Speaker Status
Lit steady	Idle (Powered ON, not connected to Bluetooth device)
LED rapid blinking	Pairing mode
LED blinks every 2 second	Connected to Bluetooth device

- Volume Down / Up
- AUX IN
- Power ON / OFF switch
- AC IN

FR Aperçu du produit.

- Bouton de connexion / voyant indicateur d'état

État du voyant	Etat du haut-parleur
Voyant allumé et stable	Veille (Activé, non branché au périphérique Bluetooth)
Voyant qui clignote rapidement	Mode couplage
Le voyant clignote toutes les 2 secondes	Branché au périphérique Bluetooth

- Volume BAS / HAUT
- Entrée AUX
- Bouton ON / OFF
- Entrée CA

ES Información general del producto.

- Botón de conexión / LED indicador de estado

Estado del LED	Estado de los altavoces
LED encendido con luz fija	Inactivo (Encendido, sin conectar con el dispositivo Bluetooth)
LED con parpadeo rápido	Modo de emparejamiento
LED parpadeando cada 2 segundos	Conectado con el dispositivo Bluetooth

- Volumen subir / bajar
- AUX IN (entrada auxiliar)
- Interruptor de alimentación encendido/apagado
- AC IN (entrada CA)

BP Visão geral do produto.

- Botão Conectar/Indicador de status do LED

Status do LED	Status do alto-falante
LED aceso continuamente	Ocioso (LIGADO, não conectado para dispositivo Bluetooth)
LED piscando rapidamente	Modo de emparelhamento
LED pisca a cada 2 segundos	Conectado ao dispositivo Bluetooth

- AUMENTO/REDUÇÃO do volume
- ENTRADA AUXILIAR
- Chave LIGA/DESLIGA
- ENTRADA DE CA

JP 製品概要

- 接続ボタン / LED ステータスインジケータ

LEDステータス	Speaker Status
点灯	アイドル状態 (電源は入っているが、Bluetoothデバイスに接続されていない)
短く点滅	ペアリングモード
2秒毎に点滅	Bluetoothデバイスに接続

- ボリュームダウン/アップ
- AUX 入力
- 電源 ON/OFF スイッチ
- AC 入力

CS 产品概覽

- 连接按钮/LED 状态指示灯

LED 状态	音箱状态
LED 呈长亮状态	空闲 (电源开启, 未连接至蓝牙设备)
LED 快速闪烁	配对模式
LED 2 秒种闪烁一次	已连接至蓝牙设备

- 音量减小/增大
- 辅助输入
- 电源开关
- 交流电源输入端

CT 產品概覽

- 连接按钮 / LED 狀態指示

LED 狀態	喇叭狀態
LED 穩定亮起	閒置 (電源開啟, 未連接至藍芽裝置)
LED 快速閃爍	配對模式
LED 每隔 2 秒閃爍一次	已連接至藍芽裝置

- 減小音量/增大音量
- 輔助輸入
- 電源開啟/關閉 切換開關
- AC 輸入

TR Ürün genel bakış.

- Bağlan Düğmesi / LED durum göstergesi

LED Durumu	Speaker Status
LED ışığı sabit olarak açık	Boşta (Güç AÇIK, Bluetooth aygıtına bağlı değil)
LED hızlı yanıp sönüyor	Eşleştirme modu
LED 2 saniyede bir yanıp sönüyor	Bluetooth aygıtına bağlı

- Sesi KAPATMA / AÇMA
- AUX GİRİŞİ
- Güç AÇMA / KAPATMA düğmesi
- AC GİRİŞİ

KO 제품개요

- 연결 버튼/LED 상

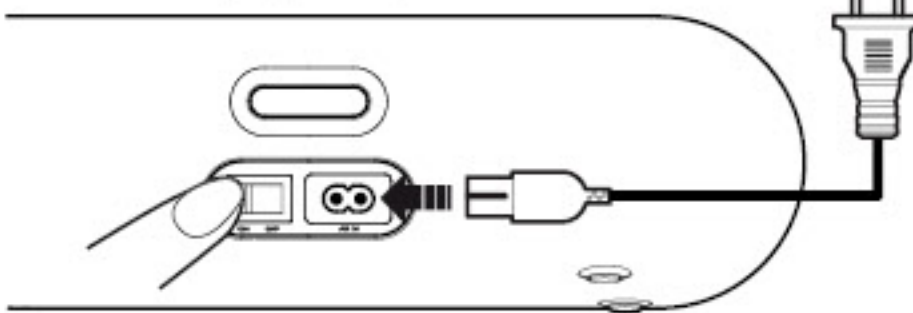
LED 상태	스피커 상태
LED 표시등 켜져 있음	유휴 (전원 켜짐, Bluetooth 장치에 연결되지 않음)
LED가 빠르게 깜박임	연결 모드
LED가 2초마다 깜박임	Bluetooth 장치에 연결됨

- 볼륨 아래로/위로
- AUX 입력
- 전원 켜짐/꺼짐 스위치
- AC 입력

EN

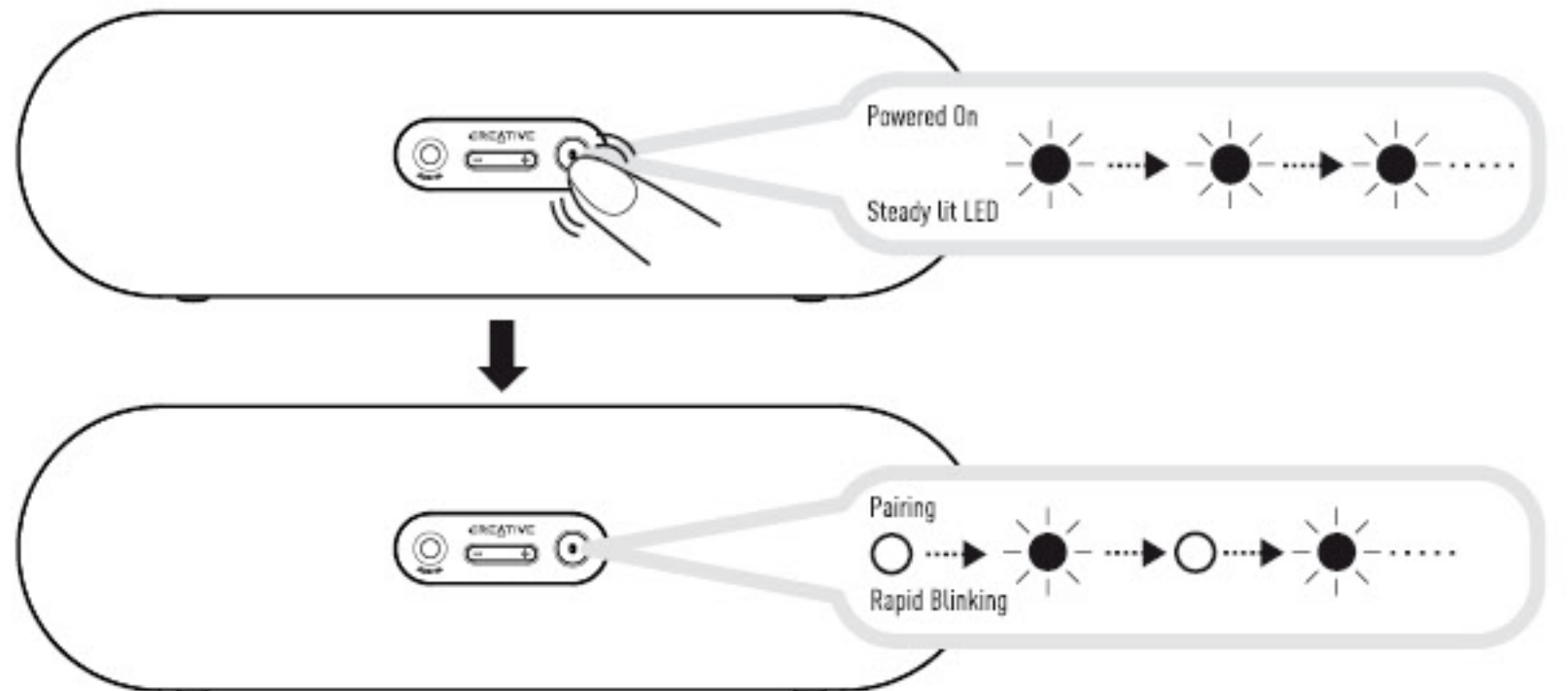
2. Enjoy audio from Bluetooth devices

- Powering Up the speaker



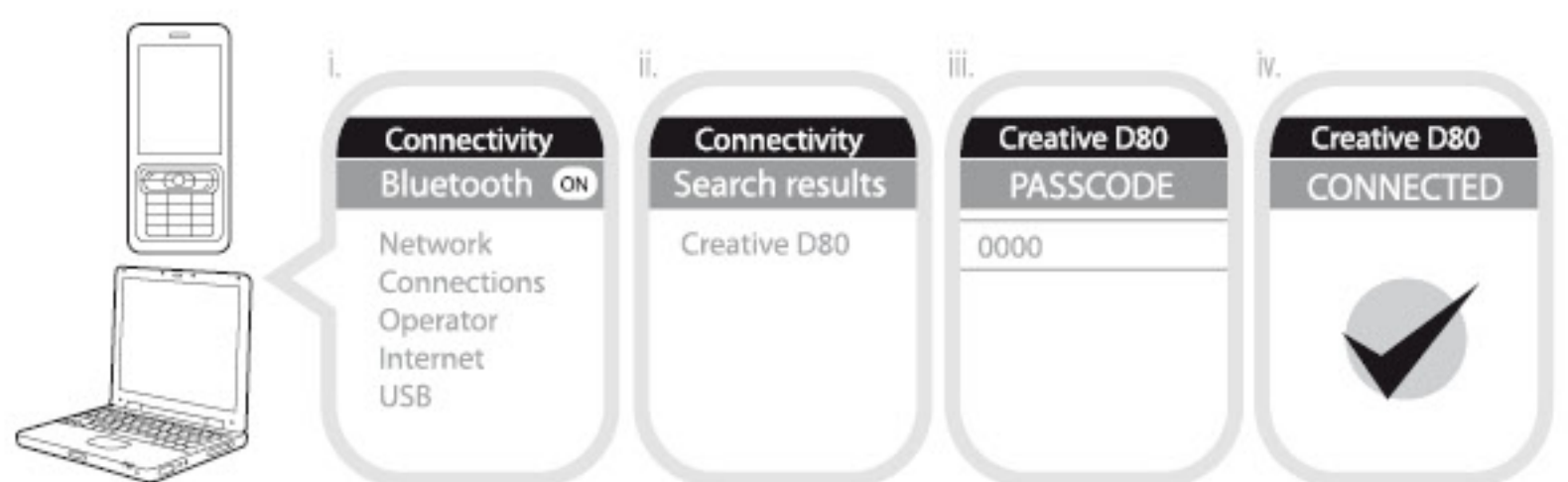
Attach the AC cord to the AC IN and flick the Power switch to ON position.

- Establish Bluetooth Connection



The LED status indicator will lit steady indicating the speaker is currently ON. To allow pairing to other Bluetooth devices, Press and Hold the CONNECT button for 3 seconds. Release when 2 beep tones are heard with the LED status indicator blinking rapidly.

- On Bluetooth device

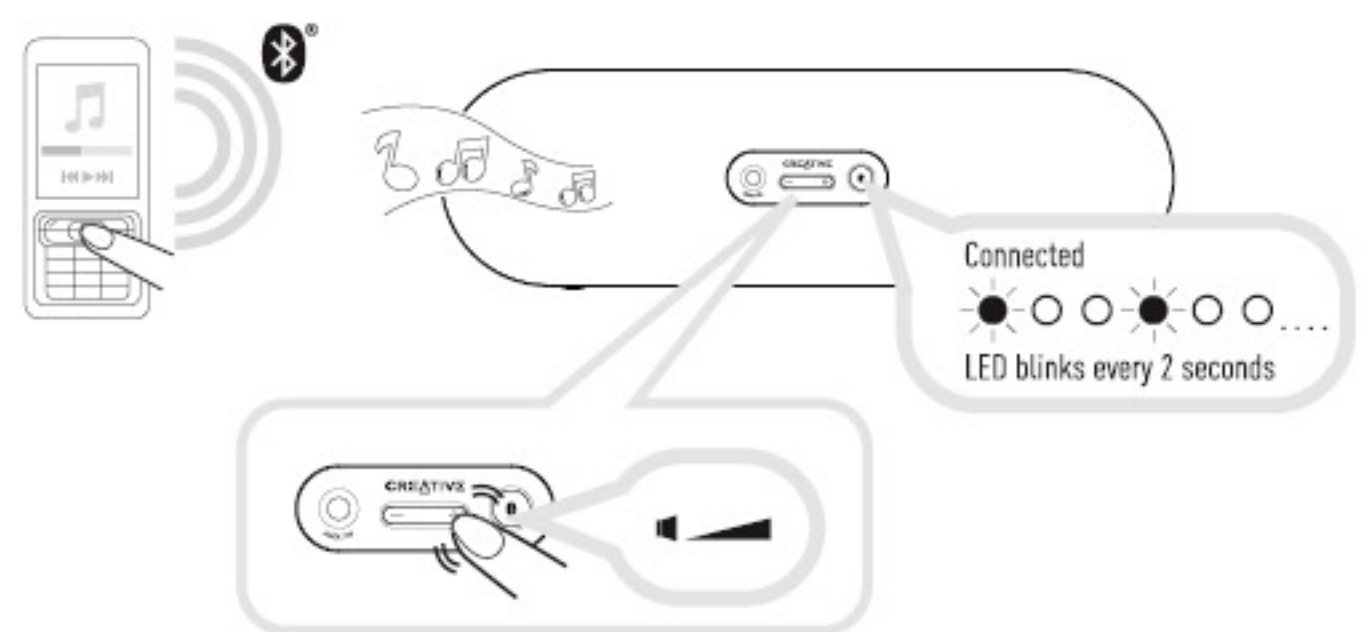


- Turn ON the Bluetooth feature on your device.
- Search for Creative D80.
- Pair and connect to Creative D80. If prompted for passcode, enter 0000.

- Pairing successful, ready to stream music.

Note: The above are generic steps to pair to a Bluetooth device, for more specific instructions on Bluetooth connectivity for your device, please consult your manufacturer's manual.

- Ready to stream music via Bluetooth



Press the Volume DOWN / UP buttons to adjust volume. Beep tones will be heard when Volume Maximum or Minimum is reached.

3. Reconnections between Bluetooth device and Creative D80

You can reconnect your paired Bluetooth device to your speaker easily.

Select 'Creative D80' entry on the Bluetooth device to reconnect

Any of the 8 previously connected Bluetooth devices would be able to re-connect to Creative D80 when the D80 is powered ON and not connected to any device.

Note: The Creative D80 is able to remember up to 8 paired devices in its memory bank, eliminating the need to re-pair again should any of these devices connect to the Creative D80. Should a 9th device be paired to the D80, the 1st device will be erased from the D80's memory banks. At any one time a maximum memory of 8 devices are being retained.

4. Toggle between last two connected Bluetooth devices

You can toggle between devices to enjoy your favorite music from another paired Bluetooth device by following these steps to establish connection.

Actions Press CONNECT button once
Indicators LED status indicator goes off and blinks at every 2 second interval
Status Ready to stream music

Note: Ensure your next paired device's Bluetooth feature is ON and ready to accept connections.

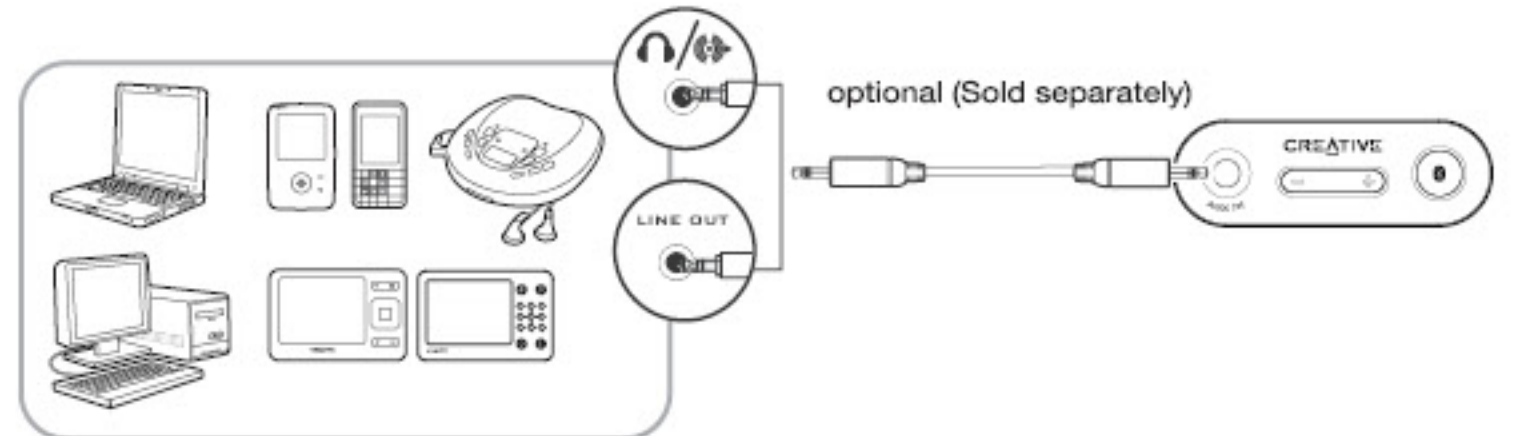
5. Return to default setting

You can return the Creative D80 to default settings and erase its memory of paired devices by following these steps.

Actions Press and hold the CONNECT button for 8 seconds while the speaker is ON
Indicators A long beep tone is heard. LED Status Indicator blinks rapidly
Status Memory cleared. Speaker is in pairing mode. Ready to accept connection from other Bluetooth devices

6. Playback with other audio devices via AUX IN

Note: The AUX-IN has a fixed volume. To increase the volume on the AUX-IN, adjust the volume control from the source device.



7. FAQ (Frequently Asked Questions)

Perform the following trouble-shooting steps before sending it for servicing. For more information, please refer to support.creative.com

The Creative D80 cannot be powered on. What should I do?

Make sure that the AC cord is firmly connected to the unit and that the power outlet is turned on. Ensure that the Power ON / OFF Switch is in the ON position. When the speaker is powered ON, the LED Status Indicator will be lighted up.

There's no Bluetooth link between my device and the Creative D80. What should I do?

Ensure that your Bluetooth enabled device supports A2DP profile. Refer to its user's manual on how to enable (turn on) the Bluetooth functions and capabilities.

You may also try the following:

- Delete the Creative D80 name entry from your Bluetooth device paired memory list and perform the steps in Section 2 (Enjoying audio from Bluetooth devices) to re-pair your device with Creative D80.
- Ensure that both your Bluetooth device and Creative D80 are not connected to any other devices
- On some Bluetooth device, you may need to select Creative D80 as your default output device after pairing is complete**

Bluetooth link is established and paired between the devices but there's no music. What should I do?
** With some built-in Bluetooth enabled computers, 3rd party USB Bluetooth dongles or other devices, you may be required to manually specify/set-up the audio output as Creative D80. (eg, under sound and audio devices section on your computer's settings) Please consult your manufacturer's documentation for further information.

Safety Instructions

Please read the following before using the Creative product:

To be completely disconnected from the power input, the mains plug has to be disconnected /detached from the mains.

Disconnect the mains plug when the device is expected to be unused for several days.

Additional guidelines for *Bluetooth* devices

The short wave radio frequency signals of a *Bluetooth* device may impair the operation of other electronic and medical devices.

Switch off the device where it is prohibited. Do not use the device in medical facilities, aircraft, refueling points, close to automatic doors, automatic fire alarms or other automatically controlled devices.

Keep this device at least 20 cm from pacemakers and other medical devices. Radio waves may impair the operation of pacemakers and other medical devices.

Technical Specifications

***Bluetooth* Version:**

Bluetooth 2.1+ EDR (Enhanced Data Rate)

Operating Frequency: 2402 - 2480 MHz

Supported *Bluetooth* profiles*:

A2DP (*Wireless Stereo Bluetooth*)

AVRCP (*Bluetooth Remote Control*)

Supported Codec:

SBC

Operating Range:

Up to 10 meters, measured in open space.

Walls and structures may affect range of device.

* Refer to your *Bluetooth* device (notebook¹, PC¹, or mobile device²) manufacturer's documentation /website for supported profiles.

¹ Compatible with PC (Windows XP/Vista/7), Apple Macintoshes equipped with *Bluetooth* wireless stereo

² Compatible with most major brands of *Bluetooth* A2DP enabled mobile phones

Compatibility Disclaimer

Wireless performance is dependent on your device's *Bluetooth* wireless technology. Refer to your device manufacturer's manual. Creative will not be liable for any lost of data or leakages resulting from the use of these devices.

Note: Rating information and other markings are located on the bottom of this product.

Regulatory Information

The following sections contain notices for various countries:

CAUTION: This product is intended for use with FCC/CE certified computer equipment. Please check the equipment operating/installation manual and/or with the equipment manufacturer to verify/confirm if your equipment is suitable prior to the installation or use of the product.

Federal Communication Commission (FCC) Interference Statement

FCC Part 15: This equipment has been tested and found to comply with the limits for a Class B digital device, pursuant to Part 15 of the FCC Rules. These limits are designed to provide reasonable protection against harmful interference in a residential installation. This equipment generates, uses and can radiate radio frequency energy and, if not installed and used in accordance with the instructions, may cause harmful interference to radio communications. However, there is no guarantee that interference will not occur in a particular installation. If this equipment does cause harmful interference to radio or television reception, which can be determined by turning the equipment off and on, the user is encouraged to try to correct the interference by one or more of the following measures:

- Reorient or relocate the receiving antenna.
- Increase the separation between the equipment and receiver.
- Connect the equipment into an outlet on a circuit different from that to which the receiver is connected.
- Consult the dealer or an experienced radio/TV technician for help.

This device complies with part 15 of the FCC Rules. Operation is subject to the following two conditions:

1. This device may not cause harmful interference, and
2. This device must accept any interference received, including interference that may cause undesired operation.

CAUTION: To comply with the limits of the Class B digital device, pursuant to Part 15 of the FCC Rules, this device must be installed with computer equipment certified to comply with Class B limits.

All cables used to connect to the computer and peripherals must be shielded and grounded. Operation with non-certified computers or non-shielded cables may result in interference to radio or television reception.

MODIFICATION: Any changes or modifications not expressly approved by the grantee of this device could void the user's authority to operate the device.

Federal Communication Commission (FCC) Radiation Exposure Statement

This equipment complies with FCC radiation exposure limits set forth for an uncontrolled environment. This equipment should be installed and operated with minimum distance 20cm between the radiator & your body. This transmitter must not be co-located or operating in conjunction with any other antenna or transmitter.

California Proposition 65 Statement

WARNING: Handling this product may expose you to chemicals known to the State of California to cause cancer and birth defects or other reproductive harm.

Wash hands after handling.

Explanatory Note: California Safe Drinking Water and Toxic Enforcement Act of 1986 (Proposition 65) requires special product labeling for products containing certain chemicals known to the State of California to cause cancer, birth defects or other reproductive harm. Creative has chosen to provide a warning based on its knowledge about the presence of one or more listed chemicals without attempting to evaluate the level of exposure. With Creative's products, the exposure may be below the Proposition 65 level of concern, or could even be zero. However, out of an abundance of caution, Creative has elected to place the Proposition 65 warning on its products.

Déclaration de la Proposition 65 de la Californie

AVERTISSEMENT: La manipulation de ce produit peut vous exposer à des produits chimiques qui sont reconnus par l'État de la Californie comme pouvant provoquer le cancer, des anomalies congénitales ou d'autres effets nuisibles à la reproduction.

Veillez vous laver les mains après l'avoir manipuler.

Note explicative: La Proposition 65 (California Safe Drinking Water and Toxic Enforcement Act of 1986) de la Californie sur les matières dangereuses et l'eau potable exige un étiquetage spécial pour les produits contenant certains produits chimiques qui sont reconnus par l'État de la Californie comme pouvant provoquer le cancer, des anomalies congénitales ou d'autres effets nuisibles à la reproduction. Creative a choisi d'inclure une mise en garde s'appuyant sur sa connaissance de la présence d'un ou de plusieurs de ces produits chimiques sans essayer d'en évaluer le niveau d'exposition. Pour les produits de Creative, le niveau d'exposition peut être inférieur au niveau critique établi par la Proposition 65 ou même être nul. Néanmoins, par souci extrême de prudence, Creative a choisi de placer l'avertissement de la Proposition 65 sur ses produits.

Notice for Canada

This Class B digital apparatus complies with Canadian ICES-003.

Cet appareil numérique de la classe B est conforme à la norme NMB-003 du Canada.

Operation is subject to the following two conditions:

- (1) This device may not cause harmful interference, and
- (2) this device must accept any interference received, including interference that may cause undesirable operation.

Son Fonctionnement est soumis aux deux conditions suivantes :

- (1) Le matériel ne peut être source D'interférences et
- (2) Doit accepter toutes les interférences reques, Y compris celles pouvant provoquer un fonctionnement indésirable.

CANADIAN CLASS B STATEMENT: This digital device does not exceed the Class B limits for radio noise emissions from digital apparatus as set out in the interference-causing equipment standard entitled "Digital Apparatus," ICES-003 of the Department of Communications.

Cet appareil numérique respecte les limites de bruits radioélectriques applicables aux appareils numériques de Classe B prescrites dans la norme sur le matériel brouilleur: "Appareils Numériques," NMB-003 édictée par le ministre des Communications.

MODIFICATION: Any changes or modifications not expressly approved by the grantee of this device could void the user's authority to operate the device.

Toute modification non approuvée explicitement par le fournisseur de licence de l'appareil peut entraîner l'annulation du droit de l'utilisateur à utiliser l'appareil.

DECLARATION OF CONFORMITY

Manufacturer / Importer's Name : Creative Labs, Inc.
Manufacturer / Importer's Address : 1901 McCarthy Boulevard
Milpitas, CA. 95035
United States
Tel: (408) 428-6600

declares under its sole responsibility that the product

Trade Name : Creative

Model Numbers : MF8130

has been tested accordingly to the FCC/CISPR22 requirement for class B devices and found compliant with the following standards:

EMI/EMC: ANSI C63.4, FCC Part 15 Subpart B & C
Complies with Canadian ICES-003 Class B & RSS-210 Standards

This device complies with part 15 of the FCC Rules. Operation is subject to the following two conditions:

1. This device may not cause harmful interference, and
2. This device must accept any interference received, including interference that may cause undesirable operation.

Ce matériel est conforme à la section 15 des règles FCC. Son Fonctionnement est soumis aux deux conditions suivantes:

1. Le matériel ne peut être source D'interférences et
2. Doit accepter toutes les interférences reçues, Y compris celles pouvant provoquer un fonctionnement indésirable.

Compliance Manager
Creative Labs, Inc.

April 12,2011

Notice for Taiwan

敬告使用者:

1. 本產品使用時,不致造成違反低功率電波輻射性電機管理辦法之控制、調整及開關之使用方法。

2. 本產品不得任意調整更改各項零件或對於發射之功率影響之作為,若有操作問題請與本公司人員聯繫;並由本公司 負起監督及維修之責任。

3. 根據交通部低功率電波輻射性電機管理辦法規定:

第十二條

經型式認證合格之低功率射頻電機,非經許可,公司、商號或使用者均不得擅自變更頻率、加大功率或變更原設計之特性及功能。

第十四條

低功率射頻電機之使用不得影響飛航安全及干擾合法通信;經發現有干擾現象時,應立即停用,並改善至無干擾時方得繼續使用。

前項合法通信,指依電信法規定作業之無線電通信。

低功率射頻電機須忍受合法通信或工業、科學及醫療用電波輻射性電機設備之干擾。

Notice for Singapore

Complies with
IDA Standards
DB00148

Notice for Australia / New Zealand



This product complies with the requirements of the ACMA Radiocommunications (Electromagnetic Compatibility) Standard 2008.

Notice for Korea

Safety information

B급 기기

(가정용 방송통신기자재)

Class B Equipment

(For Home Use Broadcasting & Communication Equipment)

이 기기는 가정용(B급) 전자파적합기기로서 주로 가정에서 사용하는 것을 목적으로 하며, 모든 지역에서 사용할 수 있습니다.

This equipment is home use (Class B) electromagnetic wave suitability equipment and to be used mainly at home and it can be used in all areas.