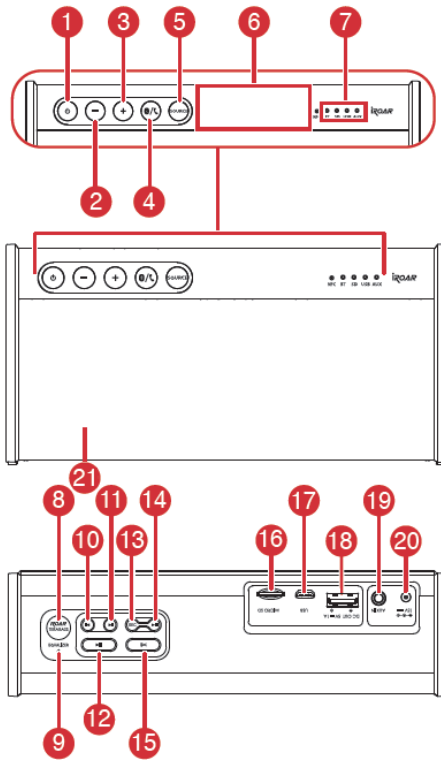


CREATIVE®
CREATIVE iROAR GO
 Quick Start

Model No.: MF8225

Overview



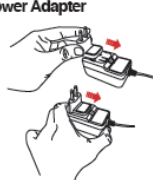
1. Power button / battery status indicator
2. Volume -
3. Volume +
4. Bluetooth® button / Status Indicator
5. Source Button
6. NFC touchpoint
7. Source Indicator
8. **ROAR** Button / Status indicator
9. Equalizer Status Indicator
10. Previous Button
11. Next Button
12. Play / Pause Button
13. Record Button / Recording Status Indicator
14. (Record) Play / Pause Button
15. Random / Repeat All Button / Random Playback Indicator
16. MicroSD Slot
17. Micro USB Connector
18. DC Out (USB 1.0A) / USB Flash drive Connector
19. Aux-in / External Microphone In
20. 15V DC in
21. Microphone

PN 03MF82250000 Rev A

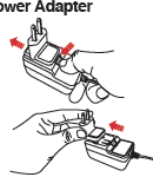
1 Charge it

Adapter Model No.: FJ-SW1501600N

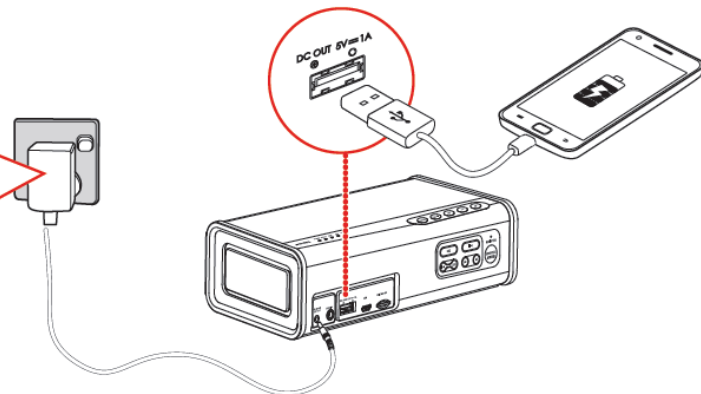
Assembling the Power Adapter



Removing the Power Adapter



DC OUT 5V = 1A

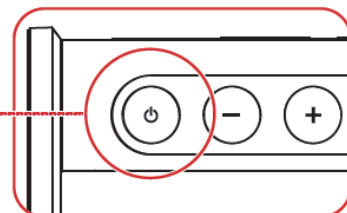


IPX6



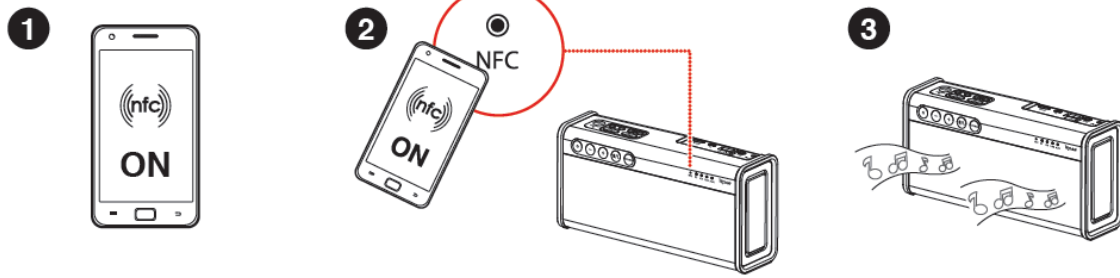
Battery status indications

Battery power	Status indication
	Battery Full
	Battery Charging
	Battery Half Full
	Battery Low

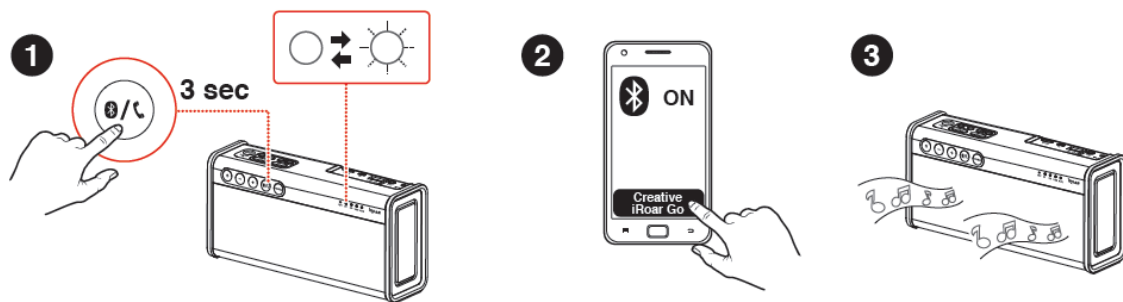


2 Pair it

NFC

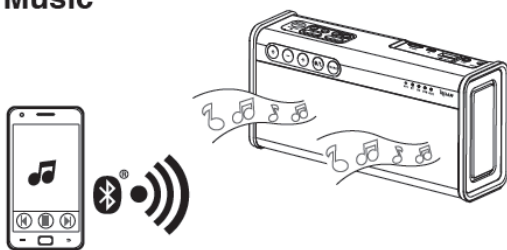


Manual pairing

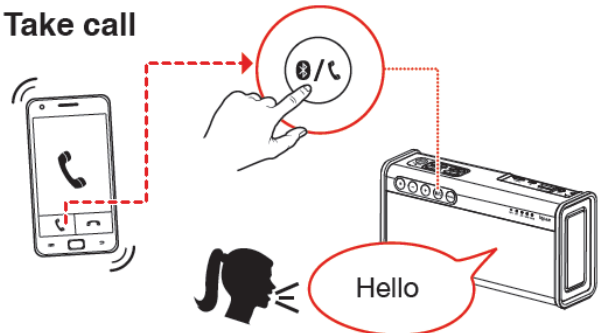


3 Use it

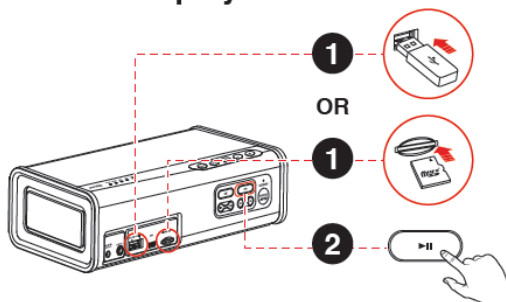
Music



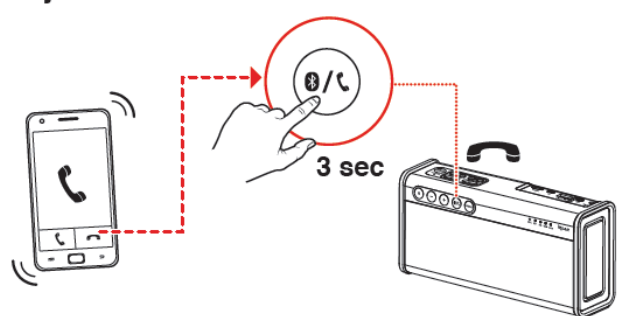
Take call



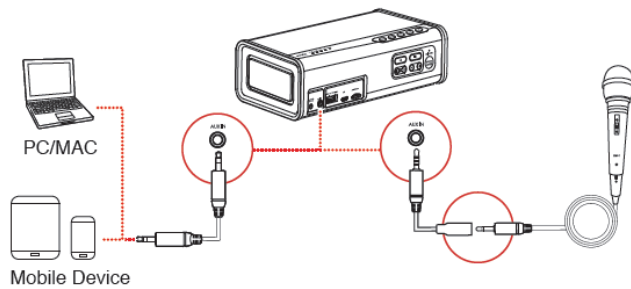
MP3 / FLAC playback



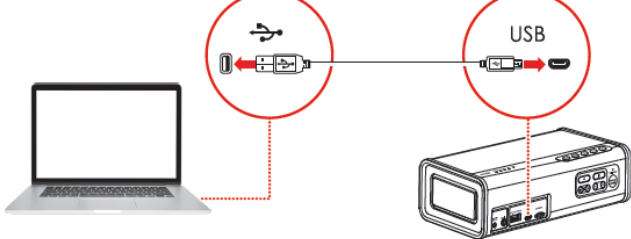
Reject call



Aux In / Microphone In



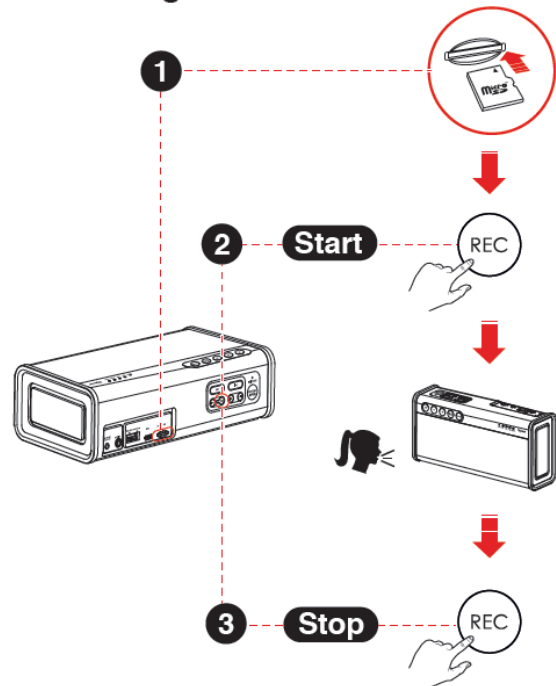
USB audio



www.creative.com/support/iroargo

日本語: jp.creative.com/downloads/SBCP

Recording



EN | Technical Specification

Bluetooth® Version: Bluetooth 4.2

Operating Frequency: 2402 - 2480 MHz

DC Output: 5V = 1000mA



Power Adapter Information

Model Number: FJ-SW1501600N

Input: 100-240VAC 50/60Hz

Output: 15VDC 1.6A

Operating Temperature range: 0°C to 45°C


Supported Bluetooth profiles*:

A2DP (Wireless Stereo Bluetooth), AVRCP (Bluetooth Remote Control), HFP (Handsfree profile)

Supported Codec: SBC, AAC

Operating Range: Up to 10 meters, measured in open space.

Walls and structures may affect range of device.

Supports microSD cards of Class 4 and above,  up to 32GB in FAT16/FAT32 format

Supports USB Flash Drives up to 32GB in FAT16/FAT32 format

Supported audio formats: MP3, FLAC and WAV (16 bit 48Khz PCM)

Support Mp3 up to 320kbps.

Support FLAC up to 1.3Mbps.

Records audio at 128kbps, MP3 format in mono.

Note: Compliance markings are located on the bottom of this product.

* Refer to your Bluetooth device (notebook¹, PC¹, or mobile device²) manufacturer's documentation/website for supported profiles.

¹ Compatible with PC (Windows XP/Vista/7/8/8.1/10), Apple Macintoshes (Mac OSX 10.10 and above) equipped with Bluetooth wireless stereo.

² Compatible with most major brands of Bluetooth A2DP enabled mobile phones.

Compatibility Disclaimer

Wireless performance is dependent on your device's Bluetooth wireless technology. Refer to your device manufacturer's manual. Creative will not be liable for any loss of data or leakages resulting from the use of these devices.

Product Registration

Registering your product ensures you receive the most appropriate service and product support available. You can register your product during installation or at <http://www.creative.com/register>. Please note that your warranty rights are not dependent on registration.

Safe Removal of Built-in Battery

Detailed instructions on removal of integrated battery can be found at Quickstart User Guide / Safety and Regulatory Information (creative.com/support/iroargo), these instructions are meant strictly for independently qualified professionals.

Hereby, Creative Labs Pte Ltd. declares the Bluetooth speaker, model no. MF8225 is in compliance with Directive 2014/53/EU. The full text of the EU declaration of conformity is available at <http://www.creative.com/EUDoC>

Copyright © 2016 Creative Labs Pte. Ltd. All rights reserved. Creative, the Creative logo, Sound Blaster, the Sound Blaster logo, Sound Blaster Roar, SBX Pro Studio and the SBX Pro Studio logo are trademarks or registered trademarks of Creative Technology Ltd. in the United States and/or other countries. The Bluetooth® word mark and logos are registered trademarks owned by Bluetooth SIG, Inc. and any use of such marks by Creative Technology Ltd is under license. Other trademarks and trade names are those of their respective owners. aptX is a trademark of CSR Pte. microSDHC Logo is a trademark of SD-3C, LLC. All specifications are subject to change without prior notice. Use of this product is subject to a limited hardware warranty. Actual contents may differ slightly from those pictured.