

Creative Sound BlasterX Katana

Quick Start Guide

Model No: MF8245

Draft V0.1

Sound Bar



Passive Subwoofer



Remote Control



External power adapter



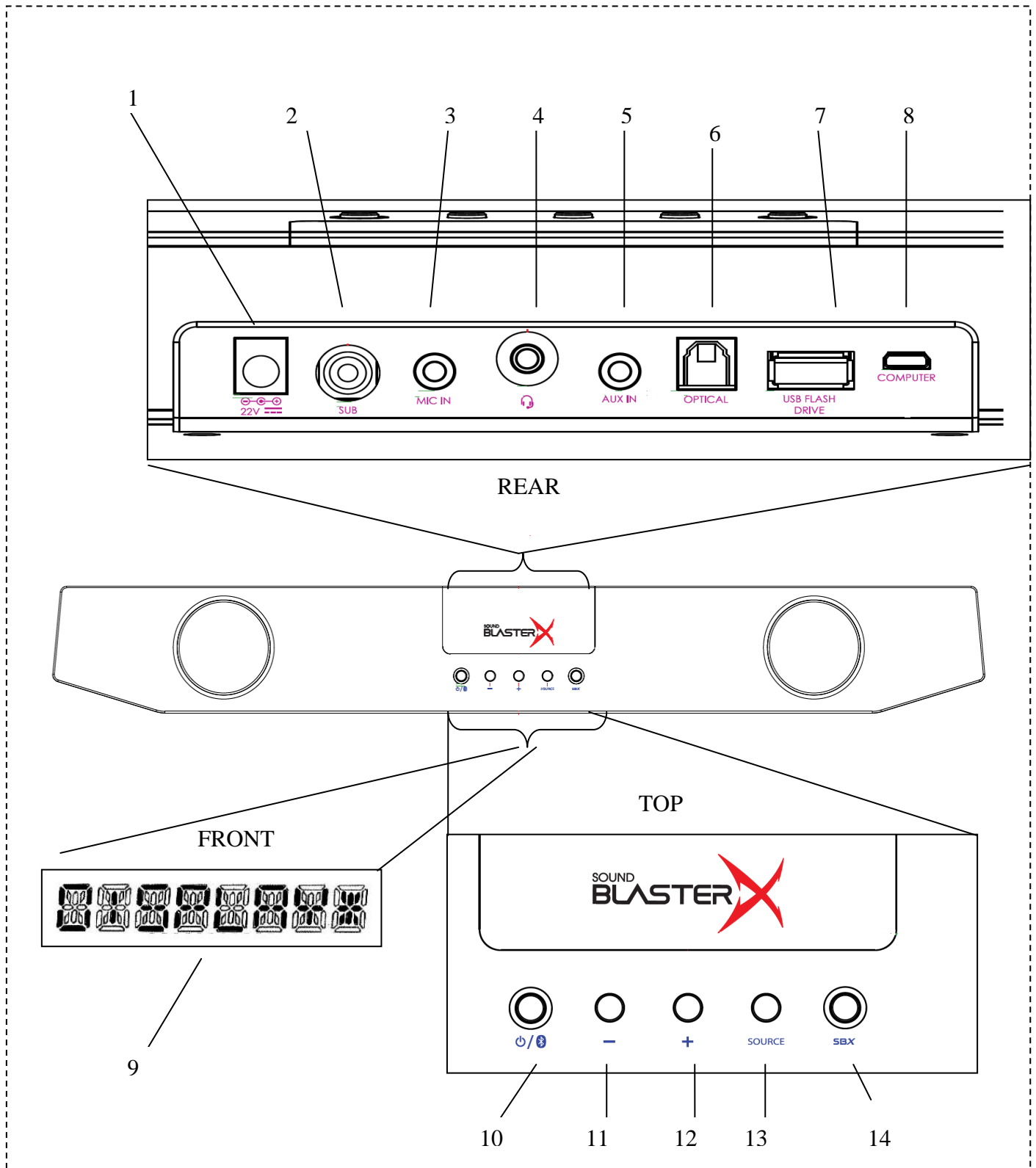
使用产品前请阅读使用说明

Model No. / Modèle No. / 型號 / 型号: MF8245

P/N. 03MF824500000

Overview

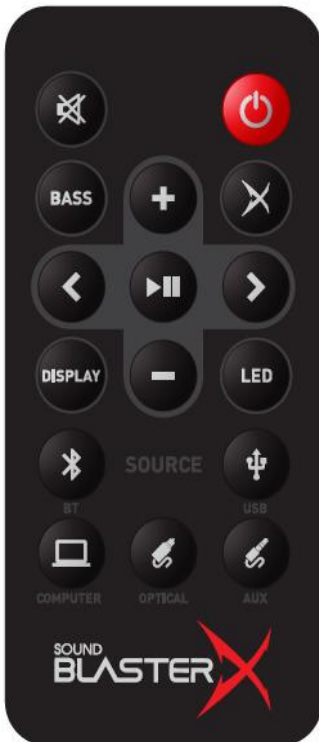
Main Speaker



Overview description

1. 22V DC in
2. Subwoofer Out
3. Mic in
4. Headset Out
5. Aux in
6. Optical in
7. USB Flash Drive
8. Computer USB Audio
9. Display
10. Power/Bluetooth Button / Status Indicator
11. Volume -
12. Volume +
13. Source Button
14. Profile Button / Status Indicator

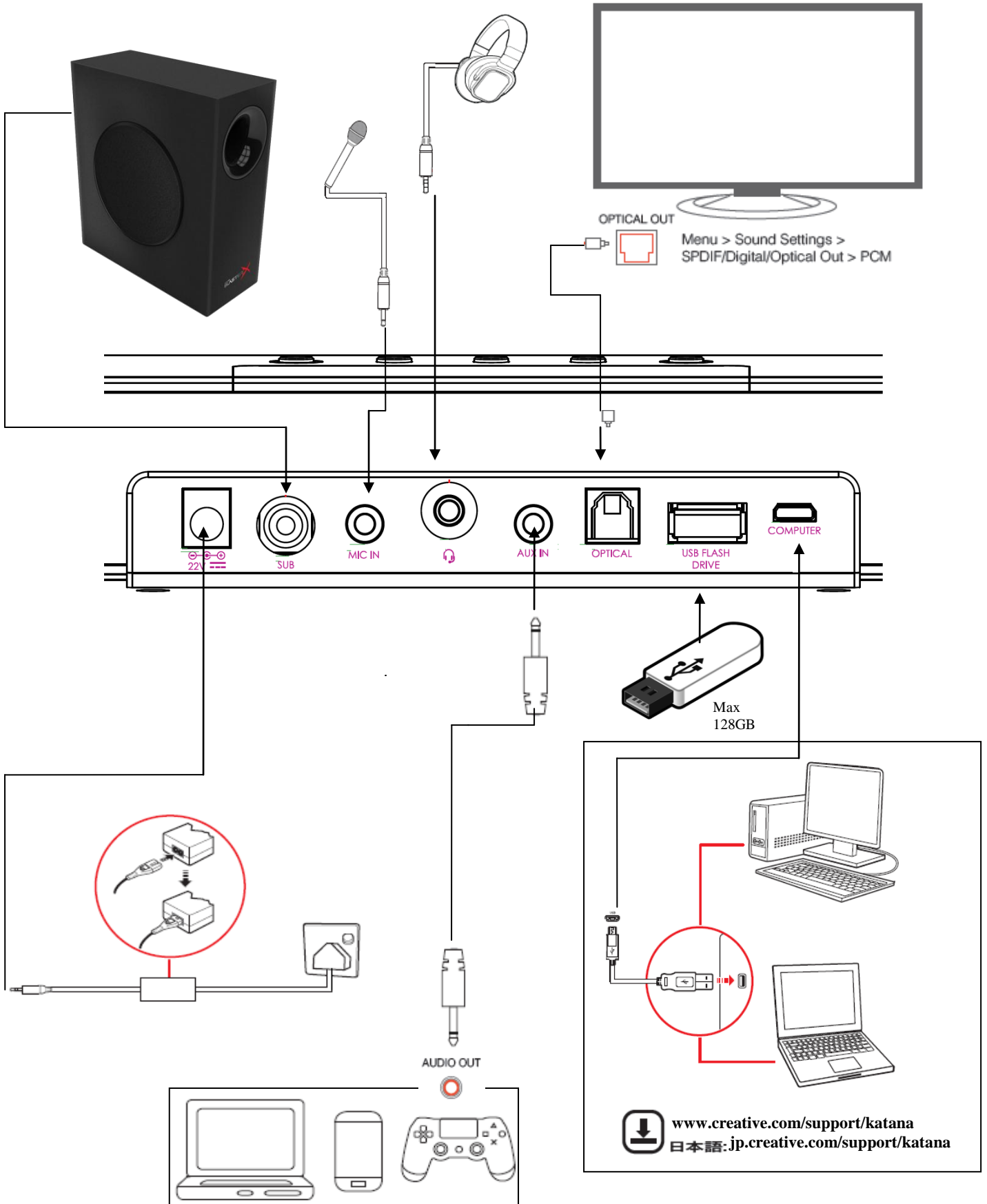
Remote Control



Remote Control Buttons

	Bluetooth		Volume +		Mute
			Volume -		Power
	Computer USB Audio		Previous		Bass Adjust
	Optical In		Play/Pause		Presets
	USB Flash Drive		Next		LED mode
	Aux In				Front Display

Connecting Peripherals



Power ON/OFF

- Plug in power cord to external power supply and the other end to wall socket.
- Plug in DC plug to DC socket of the speaker unit
- Press once to turn ON (Front display will show PWR UP then show MUTED, at the same time the colour LED at the bottom will be lighted up.
- Press once to turn OFF (Front display will show PWR OFF and colour LED will be switch off.

Switching Sources

- Press speaker “Source Button” (13).
- Speaker cycles through **BT > Aux IN > Optical > USB > Computer**, as shown on the front display (9)

*USB : USB Flash Drive
COMPUTER: micro USB port for USB Audio

Pairing Bluetooth

- Hold speaker “Power/Bluetooth Button” (10) until the display (9) shows “BT Pairing”
- Power Bluetooth indicator lights up white if Bluetooth is not connected
- Indicator lights up blue if Bluetooth is connected

Changing Audio Presets

- Press the speaker or remote control profile button (14) to cycle through audio and lighting preset selections; **DSP 01 > DSP 02 > DSP 03 > DSP 04 > DSP 05 > Off**

Music Playback From USB FlashDrive

- Insert USB Flash Drive
- Ensure Source is switched to USB
- Control playback from remote control previous, play/pause and next button.

Adjusting Bass Level

- Press remote control “Bass” button
- Use remote control “Previous” and “Next” buttons to increase or decrease level (***Note; will be changed to Vol + and Vol – in final product**)
- Press remote control “bass” button again to set and exit bass adjustment mode

Changing LED lighting modes

- Press remote control “LED” button to cycle through LED lighting modes

Changing Display modes

- Press remote control “Display” button to toggle between display on and display off modes
- In display off mode; all alerts, source and status changes would be shown on display for 10 sec only
- In display on mode; display is permanently switched on

Dolby Digital Decoding

- When decoding Dolby Digital encoded audio via Optical-In, “Dolby D” would be shown on the front display (9)

PC Application

- Gain full control of your SoundBlasterX Katana and enhance your listening experience with professionally tuned presets and customizable sound controls
- Download **Sound Blaster Connect** for PC from www.creative.com/support/katana

Technical Specification

Product Name: SoundBlasterX Katana
Model Number: MF8245
Bluetooth® Version: Bluetooth 4.2
Operating Frequency: 2402 - 2480 MHz

Total power: 75W (RMS)

Energy Saving Information

Power consumption

- Standby/Off : < 0.5 W
- Networked Standby : < 3 W (Bluetooth)
< 3 W (USB)
< 3 W (Optical)
< 3 W (all network ports activated)

Power Management

- Power consumption < 0.5W after 28 hours inactivity when all network ports are deactivated / disconnected
- Networked standby within 20 minutes inactivity (Bluetooth, USB, Optical)

Activation & deactivation of wireless network port(s)

- To activate, perform Bluetooth device pairing
- To deactivate, disconnect Bluetooth from external device providing the audio source

Power Adapter Information



Model Number: DYS602-220250W
Input: 100-240VAC 50/60Hz
Output: 22VDC 2.5A

Operating Temperature range: 0 °C to 45 °C

Supported Bluetooth profiles*:

A2DP (Wireless Stereo Bluetooth), AVRCP (Bluetooth Remote Control)

Supported Codec: SBC, AAC

Operating Range: Up to 10 meters, measured in open space.

RF Output Power: < 4 dBm

Walls and structures may affect range of device.

Supports USB flash drives up to 128GB in FAT16/FAT32/exFAT format

Supported audio formats: MP3, WMA, FLAC and WAV (16 bit 48Khz PCM)

Support Mp3 and WMA up to 320kbps.

Does not support WMA Pro / Lossless

Support FLAC up to 1.3Mbps.

Support USB Audio up to 24 bit / 96 Khz

Support Optical Input up to 24 bit / 96 Khz, Dolby Digital

PC App Compatible with Windows 7/8/8.1/10

Note: Compliance markings are located on the bottom of this product.

Register your products at
www.creative.com/register

creative.com/speakers

TECHNICAL SUPPORT

www.creative.com/support

EN

Hereby, Creative Labs Pte. Ltd. declares the Bluetooth Speaker, model no. MF8245 is in compliance with Directive 2014/53/EU. The full text of the EU declaration of conformity is available at <http://www.creative.com/EUDoC>

FR

Par la présente, Creative Labs Pte. Ltd. déclare ce Enceinte Bluetooth que le modèle n° MF8245 est conforme à la Directive 2014/53/EU. L'intégralité du texte de la déclaration de conformité européenne est disponible sur <http://www.creative.com/EUDoC>

DE

Hiermit erklärt Creative Labs Pte. Ltd. dass Bluetooth-Lautsprecher, Modellnr. MF8245 der Richtlinie 2014/53/EU entspricht. Der vollständige Text der EU-Konformitätserklärung ist unter <http://www.creative.com/EUDoC> verfügbar.

IT

Creative Labs Pte. Ltd. dichiara che Altoparlante Bluetooth, modello n. MF8245 è conforme alla Direttiva 2014/53/UE. Il testo completo della dichiarazione di conformità UE è disponibile su <http://www.creative.com/EUDoC>

ES

Por el presente, Creative Labs Pte. Ltd. declara que el Altavoz Bluetooth, modelo n° MF8245 cumple con lo establecido en la Directiva 2014/53/UE. El texto completo de la declaración de conformidad de la UE está disponible en <http://www.creative.com/EUDoC>

NL

Creative Labs Pte. Ltd. verklaart hierbij dat het Bluetooth luidspreker, modelnummer MF8245 in overeenstemming is met Richtlijn 2014/53/EU. De volledige tekst van de EU-verklaring van overeenstemming is beschikbaar op <http://www.creative.com/EUDoC>

PT

Através do presente documento, a Creative Labs Pte. Ltd. declara que Coluna Bluetooth, modelo n.º MF8245 está em conformidade com a Diretiva 2014/53/UE. O texto completo da declaração de conformidade da UE está disponível em <http://www.creative.com/EUDoC>

DA

Hermed erklærer Creative Labs Pte. Ltd., at Bluetooth-højtaler, model nr. MF8245 overholder direktivet 2014/53/EU. Den fulde tekst i EU-erklæringen om konformitet er tilgængelig på <http://www.creative.com/EUDoC>

SV

Härmed förkunnar Creative Labs Pte. Ltd. Bluetooth-högtalare, att modell nr. MF8245 uppfyller direktiv 2014/53/EU. Den fullständiga texten av EU-Deklaration om överensstämmelse finns på <http://www.creative.com/EUDoC>

NO

Creative Labs Pte. Ltd. erklærer herved den Bluetooth-høytaler, at modell nr. MF8245 er i samsvar med direktiv NO 2014/53/EU. Den fullstendige teksten til EU-samsvarserklæringen er tilgjengelig på <http://www.creative.com/EUDoC>

FI

Creative Labs Pte. Ltd. täten ilmoittaa, että Bluetooth-kaiutin, malli nro MF8245 täyttää direktiivin 2014/53/EY FI vaatimukset. Koko EY-vaatimustenmukaisuusvakuutus on saatavilla osoitteessa <http://www.creative.com/EUDoC>.

EL

Με το παρόν, η Creative Labs Pte. Ltd. δηλώνει ότι το προϊόν Bluetooth Ηχείο, μοντέλο με αριθμό MF8245 συμμορφώνεται με την Οδηγία Directive 2014/53/EU. Μπορείτε να βρείτε το πλήρες κείμενο για τη δήλωση της ΕΕ σχετικά με τη συμμόρφωση στο <http://www.creative.com/EUDoC>

PL

Spółka Creative Labs Pte. Ltd. niniejszym oświadcza, że Głośnik Bluetooth, model MF8245 jest zgodny z dyrektywą 2014/53/UE. Z pełnym tekstem deklaracji zgodności UE można zapoznać się pod adresem <http://www.creative.com/EUDoC>

SK

Spoločnosť Creative Labs Pte. Ltd. týmto vyhlasuje, že Reproduktor Bluetooth, č. modelu MF8245, je v súlade so smernicou č. 2014/53/EÚ. Úplné znenie vyhlásenia o zhode EÚ je k dispozícii na lokalite <http://www.creative.com/EUDoC>

CZ

Společnost Creative Labs Pte. Ltd. tímto prohlašuje, že výrobek Reproduktor Bluetooth, model č. MF8245 vyhovuje směrnicí 2014/53/EU. Úplné znění EU prohlášení o shodě je k dispozici na <http://www.creative.com/EUDoC>

HU

A Creative Labs Pte. Ltd. ezúton kijelenti, hogy a(z) Bluetooth hangszóró termék, modellszáma MF8245, megfelel a 2014/53/EU irányelvben foglalt követelményeknek. Az EU megfeleléségi nyilatkozat teljes szövege elérhető a következő címen: <http://www.creative.com/EUDoC>

RU

Настоящим документом Creative Labs Pte. Ltd. заявляет, что Динамик с подключением по Bluetooth, модель № MF8245 полностью соответствует Директиве 2014/53/ЕС. Полный текст Декларации о соответствии требованиям ЕС доступен на сайте <http://www.creative.com/EUDoC>

LT

„Creative Labs Pte. Ltd.“ pareiškia, kad „Bluetooth“ garsiakalbis, modelio Nr. MF8245, atitinka Direktyvos 2014/53/ES reikalavimus. Visa ES atitikties deklaracija yra pateikta <http://www.creative.com/EUDoC>



Тип устройства: Беспроводная акустическая система

Номер модели, торговая марка: MF8245, Creative

Питание: 22VDC 2.5A

Производитель: Creative Labs Pte. Ltd.

Страна происхождения: Китай

Имя и адрес представителя ТС:

ООО "Дофин", 140573, РФ, Московская обл.,

Озерский район, с.Бояркино,

Номер телефона: +7-495-223-60-08

Электронный адрес: local.declarant@gmail.com

Данная контактная информация только для соответствующих органов таможенного союза (Россия, Белоруссия и

Казахстан) по вопросам соответствия продукции

Для информации о продукте или гарантии, пожалуйста, посмотрите гарантийный талон из комплекта поставки

ата производства (месяц и год): Указана на упаковке.

Данное устройство отвечает требованиям Технического регламента

Таможенного союза ТР ТС 004/2011 «О безопасности низковольтного

оборудования» утв. Решением КТС от 16.08.2011 г. №768,

Технического регламента Таможенного союза ТР ТС 020/2011

“Электромагнитная совместимость технических средств” утв.

Решением КТС от 09.12.2011г. №879

License and Copyright

© 2016 Creative Labs Pte. Ltd. All rights reserved. Creative, the Creative Logo, Sound Blaster, the BlasterX logo are trademarks or registered trademarks of Creative Technology Ltd. in the United States and/or other countries. Manufactured under the license from Dolby Laboratories. Dolby and the double-D symbol are trademarks of Dolby Laboratories. The Bluetooth® word mark and logo are owned by the Bluetooth SIG, Inc. and any use of such marks by Creative Technology Ltd is under license. Microsoft, Windows and the Windows logo are trademarks or registered trademarks of Microsoft Corporation. All other trademarks are the property of their respective owners and are hereby recognized as such. All specifications are subject to change without notice. Actual product may differ slightly from images shown. Use of the product is subject to a limited warranty.

P/N. 03MF824500000